

twentytwentyone

Arper CATIFA HARD LEATHER

Grade 1 'Cuoio'

Leather of the highest quality. The thickness and excellent consistency of the Cuoio mean that its features remain unchanged over time. These features include scars and an uneven surface, which should not be considered flaws but proof of authenticity.

Please note colours may differ on screen and print. Please contact us for further information or samples.

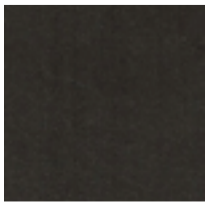
www.twentytwentyone.com



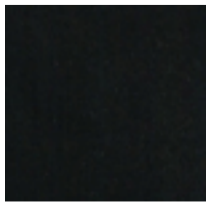
CU033



CU006



CU026



CU001