

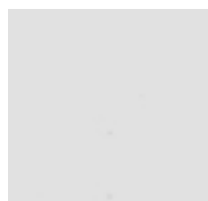
twentytwentyone

Arper CATIFA HARD LEATHER

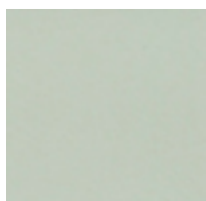
Grade 2 'Cuoietto'

Cowhide of European origin, tanned repeatedly then dyed and left to dry naturally. Its density, resistance to scratches and extreme pliability makes it suitable for any use.

Please note colours may differ on screen and print.
Please contact us for further information or samples.
www.twentytwentyone.com



CT030



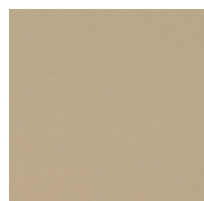
CT031



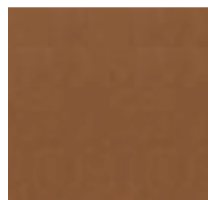
CT070



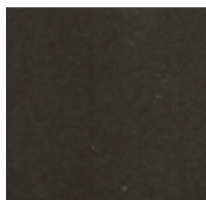
CT450



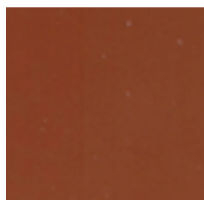
CT029



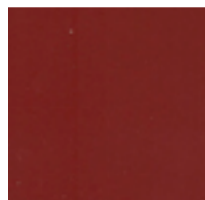
CT034



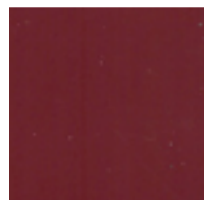
CT120



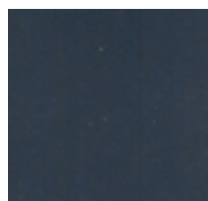
CT100



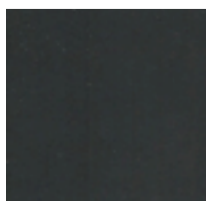
CT090



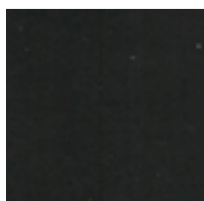
CT040



CT110



CT033



CT020