

twentytwentyone

EXTREMA L'Abbate cat. B

Designer: GS

Synthetic leather

Composition: Polyurethane 83%, cotton 37%

Width: 140 cm

Thickness 1.2 mm Weight: 480 g/m²

Instructions: Wash by hand or in the washing machine at 40°. Let fabric dry inside out. Iron at low temperature.

Please note colours may appear different on screen and print. Please contact us for further information.

www.twentytwentyone.com



5050



5150



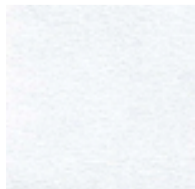
5250



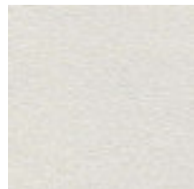
5350



5450



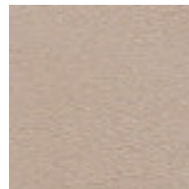
1



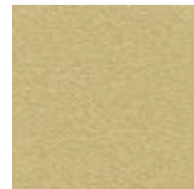
2



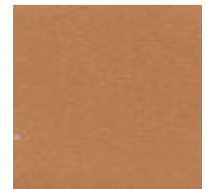
4



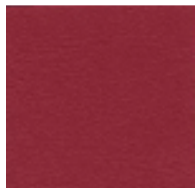
3



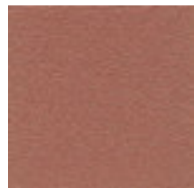
5



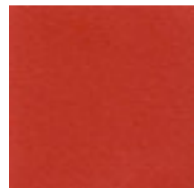
6



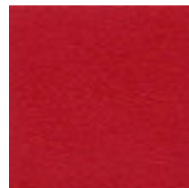
9



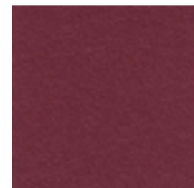
11



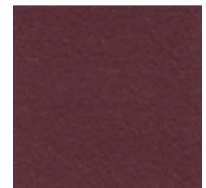
7



8



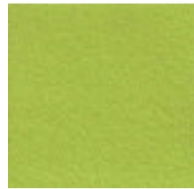
10



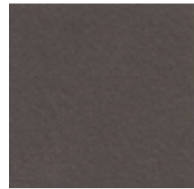
12



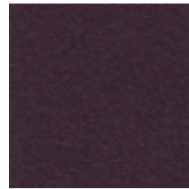
14



16



15



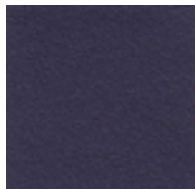
13



17



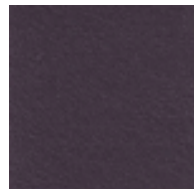
18



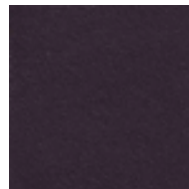
19



20



21



22