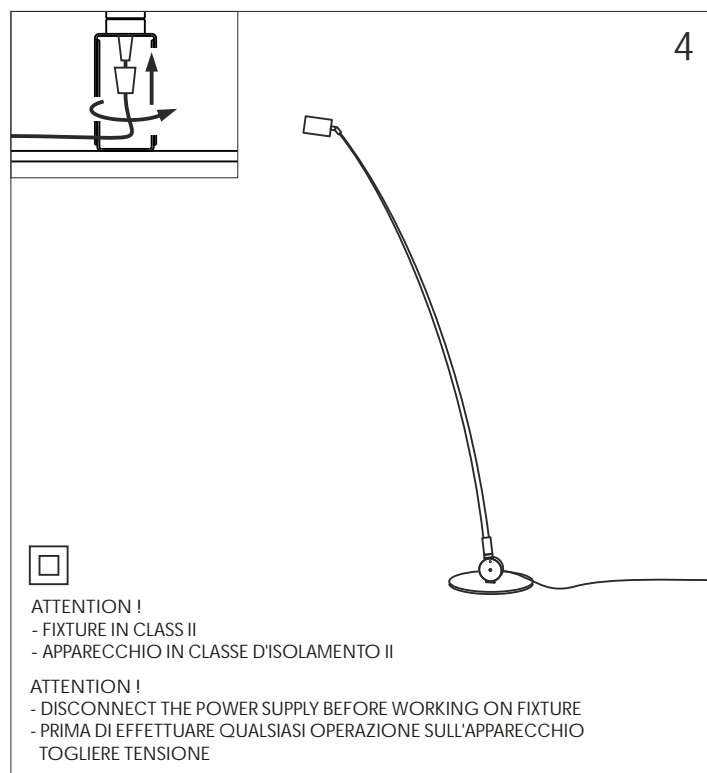
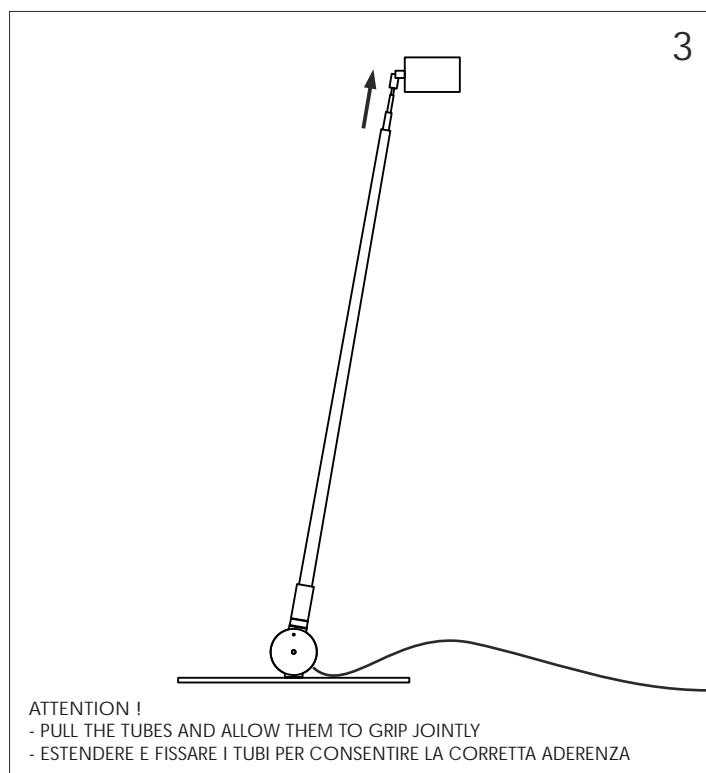
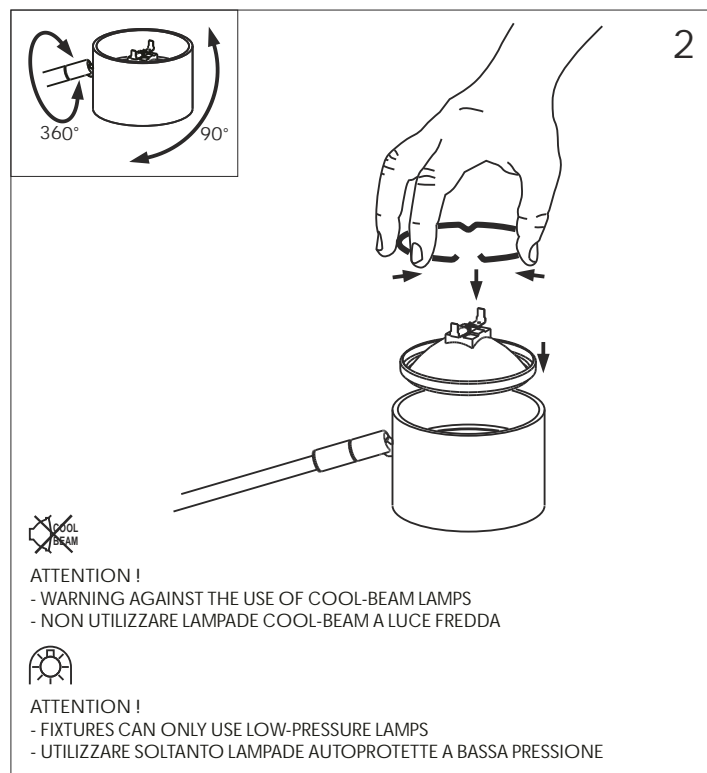
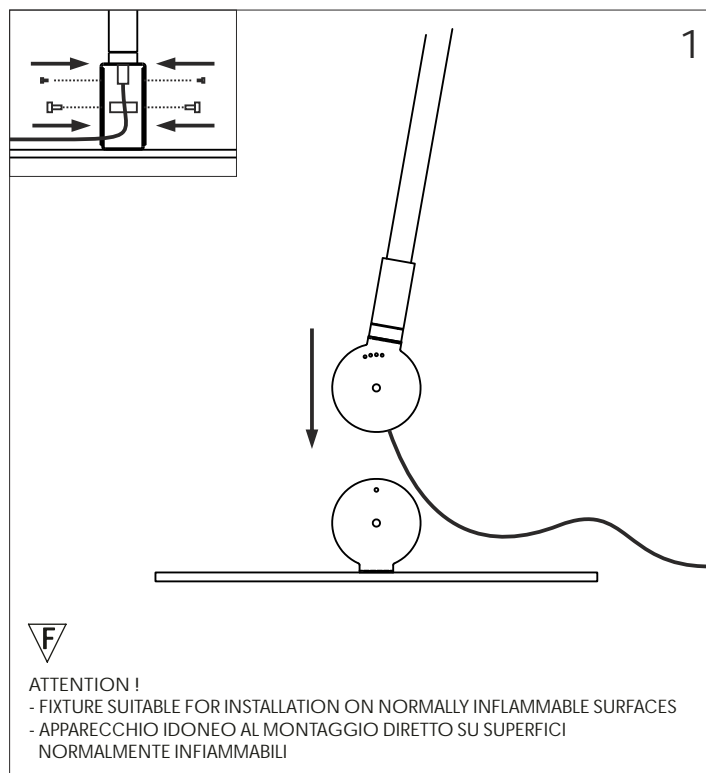


INSTRUCTION FOR CORRECT INSTALLATION AND USE  
 THE SAFETY OF THIS FITTING CAN BE GUARANTEED ONLY IF THESE INSTRUCTIONS ARE OBSERVED, DURING BOTH INSTALLATION AND USE. PLEASE RETAIN THESE SAFETY INSTRUCTIONS.  
 ISTRUZIONI PER UNA CORRETTA INSTALLAZIONE E IMPIEGO  
 LA SICUREZZA DELL'APPARECCHIO È GARANTITA SOLO RISPETTANDO QUESTE ISTRUZIONI SIA IN FASE D'INSTALLAZIONE CHE D'IMPIEGO; È NECESSARIO CONSERVARLE.



SAMPEI 230  
 DESIGN ENZO CALABRESE AND DAVIDE GROPPI - 2011

CODE 1645XX00  
 220/240 V - 50/60 Hz  
 MAX 50 W - G53 - 12 V

daide groppi

VIA BELIZZI 22-20/A  
 29122 PIACENZA  
 ITALIA  
 PHONE +39.0523.571590  
 FAX +39.0523.579768

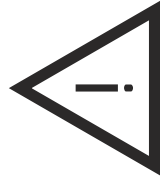
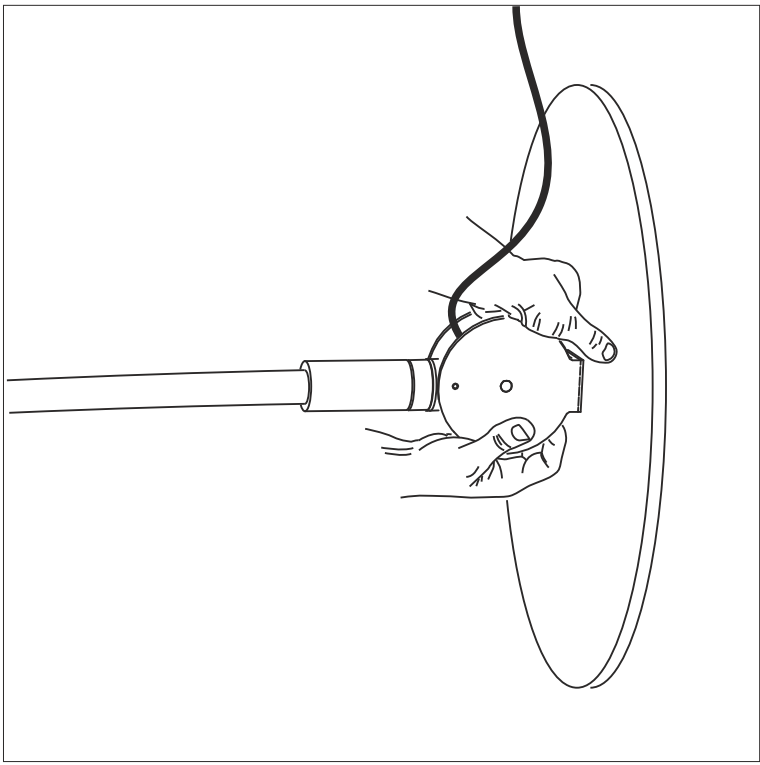
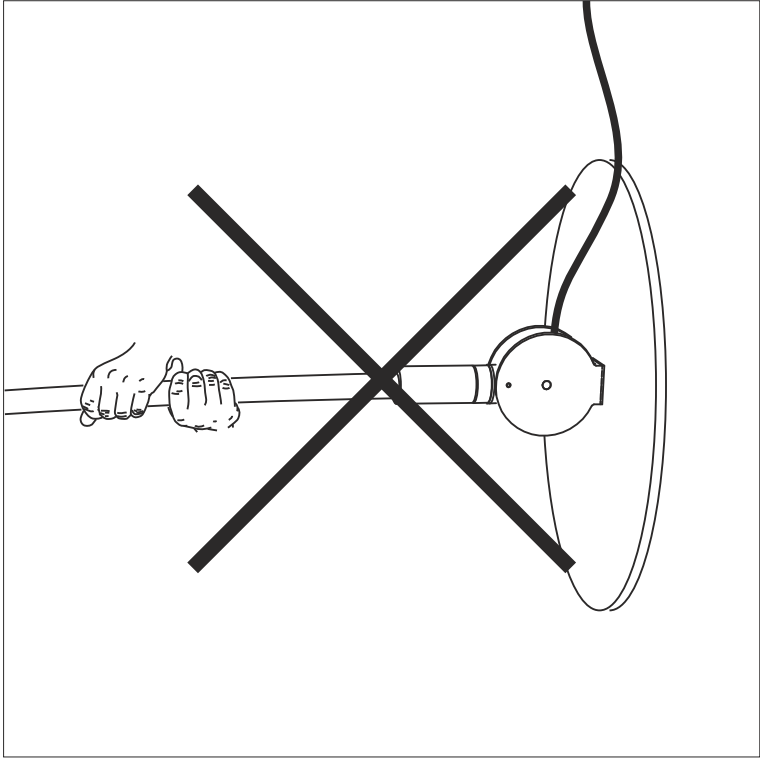


**1.5m** INDICATES MINIMUM DISTANCE TO BE KEPT BETWEEN BULB AND OBJECT ILLUMINATED  
 INDICA LA DISTANZA MINIMA DA MANTENERE TRA LAMPADA E OGGETTO ILLUMINATO

**WASTE** THIS PRODUCT MUST NOT BE DISPOSED OF WITH YOUR OTHER HOUSEHOLD WASTE  
 QUESTO PRODOTTO DEVE ESSERE SMALTITO MEDIANTE IMPIANTI DI RACCOLTA SPECIFICI

SHOWROOM  
 VIA MEDICI 13  
 20123 MILANO  
 ITALIA  
 PHONE/FAX +39.02.72023238

WWW.DAVIDEGROPPI.COM  
 INFO@DAVIDEGROPPI.COM



ATTENTION!  
ATTENZIONE!



DO NOT STRESS THE STEM FIXTURE. IN ORDER TO MOVE THE LAMP, HOLD IT BY THE BASE.  
EVITARE DI SOLLECITARE LO STELO. PER SPOSTARE L'APPARECCHIO E' NECESSARIO AFFERRARLO DALLA BASE.