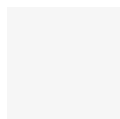


JUNO 02

Finiture
Materialien
Finitions
Acabados
仕上げ

Polipropilene
Polypropylene
Polypropylen
Polypropylène
Polipropileno



PT00011



PT00012



PT00013



PT00014



PT00015



PT00016



CHROME FREE

ELMOSOFT è una pelle semi-anilina, morbida e flessibile. La sua morbidezza associata alla sua robustezza e ad una vasta gamma di colori disponibili rendono la pelle Elmosoft adatta ad un utilizzo nel contract. Punture di insetti e cicatrici visibili contribuiscono a valorizzare le caratteristiche di unicità ed eleganza di questa pelle.

ELMOSOFT is a soft and pliable Semi-Aniline leather. Outstanding comfort combined with excellent durability and an extensive shade card, makes it very suitable for the public environment. Visible insect-bites and scars from healed wounds add to the elegant quality of the leather.

ELMOSOFT. Weiches, geschmeidiges Semi-Anilinleder, Ein sehr strapazierfähiges und im Griff komfortables Leder in reicher Farbauswahl, hervorragend geeignet für Objektausstattungen. Sichtbar erhaltene Insektenstiche und kleine vernarbte Wunden betonen die naturechte Eleganz.

ELMOSOFT est un cuir semi-aniline, souple et doux. Son confort élevé, associé à une grande robustesse et à vste gamme de coloris disponibles, le rend particulièrement indiqué pour les collectivités. Les piqûres d'insectes et les cicatrices visibles contribuent à rehausser le caractère élégant du cuir.

ELMOSOFT es una piel semianilina suave y flexible. Su destacable confort combinado con excelente durabilidad y una amplia gama de colores, la hacen muy adecuada para ambientes públicos. Picaduras de insectos visibles y cicatrices de heridas contribuyen a valorar la elegante calidad de la piel.

Arper grade
CHAIRS: ES
SOFAS: ES



ELMOSOFT è una pelle semi-anilina, morbida e flessibile. La sua morbidezza associata alla sua robustezza e ad una vasta gamma di colori disponibili rendono la pelle Elmosoft adatta ad un utilizzo nel contract. Punture di insetti e cicatrici visibili contribuiscono a valorizzare le caratteristiche di unicità ed eleganza di questa pelle.

ELMOSOFT is a soft and pliable Semi-Aniline leather. Outstanding comfort combined with excellent durability and an extensive shade card, makes it very suitable for the public environment. Visible insect-bites and scars from healed wounds add to the elegant quality of the leather.

ELMOSOFT. Weiches, geschmeidiges Semi-Anilinleder, Ein sehr strapazierfähiges und im Griff komfortables Leder in reicher Farbauswahl, hervorragend geeignet für Objektausstattungen. Sichtbar erhaltene Insektenstiche und kleine vernarbte Wunden betonen die naturechte Eleganz.

ELMOSOFT est un cuir semi-aniline, souple et doux. Son confort élevé, associé à une grande robustesse et à une vaste gamme de coloris disponibles, le rend particulièrement indiqué pour les collectivités. Les piqures d'insectes et les cicatrices visibles contribuent à rehausser le caractère élégant du cuir.

ELMOSOFT es una piel semianilina suave y flexible. Su destacable confort combinado con excelente durabilidad y una amplia gama de colores, la hacen muy adecuada para ambientes públicos. Picaduras de insectos visibles y cicatrices de heridas contribuyen a valorar la elegante calidad de la piel.

Arper grade
CHAIRS: ES
SOFAS: ES



ES77127



ES77158



ES77237



ES78023



ES87021



ES88019



ES91102



ES93068



ES93099



ES93109



ES93129



ES95006



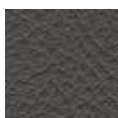
ES97038



ES98015



ES98047



ES98087



ES99999



NEOCOAST

Soft leather
Weichleder
Cuir souple
Piel

Arper grade
CHAIRS: H
SOFAS: H



P400114



P402061



P412097



P418008



P443041



P443084



P444015



P445024



P455058



P471010



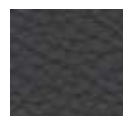
P477022



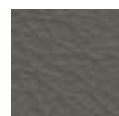
P477035



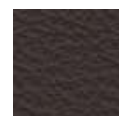
P488017



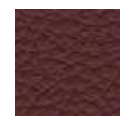
P491097



P491100



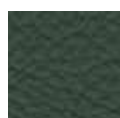
P493090



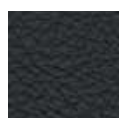
P495042



P498016



P498043



P499076

Pelle Fiore
Soft leather
Weichleder
Cuir souple
Piel

Arper grade
CHAIRS: I
SOFAS: I



PF00001



PF00002



PF00003



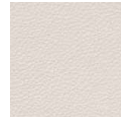
PF00004



PF00006



PF00007



PF00008



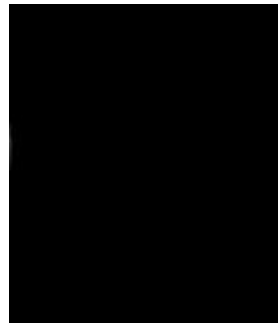
PF00009



PF00010

Cuoio
Hard leather
Kernleder
Cuir
Cuero

Arper grade
CHAIRS: CT
SOFAS: CT



CT00020



CT00031



CT00033



CT00034



CT00090

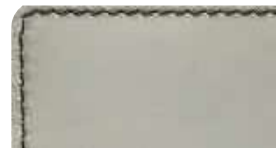


CT00120

Cuciture a contrasto standard
Standard contrast stitching
Standard Kontrastnähte
Surpiqûre standard à contrast
Costura contraste éstandar



CT00120
Cucitura in ocre
Ochre stitching
Ockergelbe Nähte
Surpiqûre en Ocre
Costura ocre



CT00031
Cucitura in grigio scuro
Dark grey stitching
Dunkelgraue Nähte
Surpiqûre en gris foncé
Costura gris obscuro



SPRADLING®

Valencia

Tessuto spalmato Valencia
Coated fabric Valencia
Beschichtete Textilien Valencia
Tissus enduits Valencia
Tejido recubierto Valencia

Arper grade
CHAIRS: **B**
SOFAS: **B**



VL02020



VL00001



VL00002



VL00020



VL00033



VL00034



VL00035



VL01001



VL01020



VL01048



VL01049



VL01050



VL02001



VL02002



VL02021



VL02062



VL02074



VL02075



VL02106



VL02107



VL02108



VL02109



VL02110



VL02111



VL02112



VL02113



VL02114



VL02115



VL02116



VL02117



VL02118



VL02119



VL03001



VL03067



VL03068



VL03069



VL04001



VL04002



VL04003



VL04020



VL04040



VL04041



VL04042



VL04043



VL04044



VL04045



VL04052



VL05001



VL05002



VL05041



VL05056



VL05057



VL05065





SPRADLING®

Valencia

Tessuto spalmato Valencia
Coated fabric Valencia
Beschichtete Textilien Valencia
Tissus enduits Valencia
Tejido recubierto Valencia

Arper grade
CHAIRS: **B**
SOFAS: **B**



VL05069



VL06002



VL06003



VL06012



VL06013



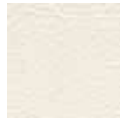
VL06019



VL06020



VL07001



VL08020



VL08032



VL09001



VL09035



VL09607



VL090C02



SPRADLING®

Silvertex

Arper grade

CHAIRS: **C**

SOFAS: **B**



SX00001



SX00002



SX00005



SX00009



SX00013



SX00073



SX01010



SX01014



SX01051



SX01077



SX01078



SX02003



SX02011



SX02012



SX02016



SX02064



SX02089



SX02090



SX02091



SX02092



SX02093



SX02094



SX02095



SX02096



SX02097



SX02098



SX02099



SX02100



SX02101



SX02102



SX02103



SX02104



SX02105



SX03001



SX03007



SX03066



SX03067



SX03068



SX04001



SX04002



SX04003



SX04004



SX04010



SX04011



SX04012



SX04024



SX05008



SX05009



SX05010



SX05019



SX05020



SX05063



SX06004



SX06061



SX06062



SX06065



SX07001



SX07002



SX09001



SX09002

arper

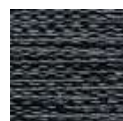
kvadrat

Balder 3

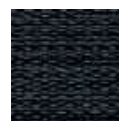
Arper grade
CHAIRS: |
SOFAS: |
PANELS: |



B100132



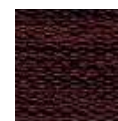
B100152



B100192



B100212



B100382



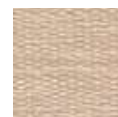
B100432



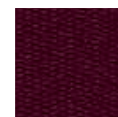
B100542



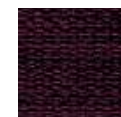
B100562



B100612



B100682



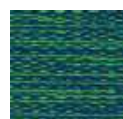
B100692



B100782



B100792



B100862



B100912



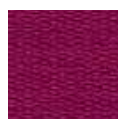
B100942



B100982



B101775



B102635

kvadrat

Canvas 2



Kvadrat's Canvas 2 has been awarded the EU Ecolabel

Arper grade
CHAIRS: D
SOFAS: F
PANELS: D



CV00114



CV00124



CV00134



CV00154



CV00174



CV00216



CV00224



CV00244



CV00254



CV00264



CV00356



CV00364



CV00374



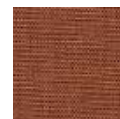
CV00414



CV00424



CV00446



CV00454



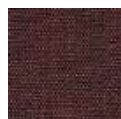
CV00546



CV00556



CV00566



CV00576



CV00614



CV00644



CV00654



CV00666



CV00674



CV00684



CV00694



CV00716



CV00726



CV00734



CV00746



CV00764



CV00786



CV00794



CV00836



CV00854



CV00926



CV00936



CV00946



CV00954



CV00964



CV00974



CV00984



CV00996

kvadrat

Divina 3



Kvadrat's Divina 3 has been awarded the EU Ecolabel

Arper grade
CHAIRS: G
SOFAS: I
PANELS: G

	DV00171	DV00106	DV00154	DV00173	DV00181	DV00191		
		DV00224	DV00236	DV00246	DV00334	DV00346		
DV00356	DV00376	DV00384	DV00393	DV00426	DV00444	DV00462	DV00526	
DV00536	DV00542	DV00552	DV00562	DV00584	DV00623	DV00626	DV00636	
DV00652	DV00662	DV00671	DV00666	DV00676	DV00684	DV00686	DV00691	
DV00692	DV00696	DV00712	DV00742	DV00756	DV00782	DV00791	DV00793	
DV00826	DV00836	DV00846	DV00856	DV00876	DV00886	DV00893	DV00922	
DV00936	DV00944	DV00956	DV00966	DV00984				

Kvadrat

Divina MD



Kvadrat's Divina MD has been awarded the EU Ecolabel

Arper grade
CHAIRS: G
SOFAS: I
PANELS: G



DI00193



DI00203



DI00213



DI00293



DI00343



DI00353



DI00363



DI00413



DI00433



DI00453



DI00613



DI00633



DI00653



DI00673



DI00683



DI00713



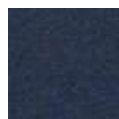
DI00733



DI00743



DI00753



DI00773



DI00783



DI00813



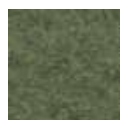
DI00843



DI00873



DI00913



DI00943



DI00973

kvadrat

Divina Melange 3



Kvadrat's Divina Melange 3 has been awarded the EU Ecolabel

Arper grade
CHAIRS: G
SOFAS: I
PANELS: G



DM00120



DM00147



DM00170



DM00180



DM00227



DM00237



DM00260



DM00277



DM00280



DM00367



DM00427



DM00457



DM00467



DM00471



DM00517



DM00527



DM00547



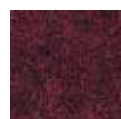
DM00557



DM00567



DM00571



DM00581



DM00597



DM00617



DM00620



DM00647



DM00677



DM00687



DM00731



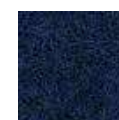
DM00747



DM00757



DM00777



DM00787



DM00821



DM00871



DM00917



DM00937



DM00967



DM00977

kvadrat

Field 2

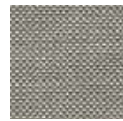


Kvadrat's Field 2
has been awarded
the EU Ecolabel

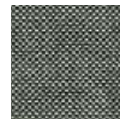
Arper grade
CHAIRS: **B**
SOFAS: **C**
PANELS: **B**



FI00123



FI00132



FI00142



FI00173



FI00182



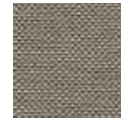
FI00192



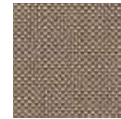
FI00222



FI00233



FI00242



FI00343



FI00373



FI00443



FI00463



FI00623



FI00643



FI00662



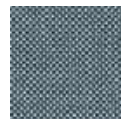
FI00663



FI00673



FI00693



FI00723



FI00733



FI00763



FI00773



FI00782



FI00793



FI00843



FI00933



FI00943



FI00963



FI00983

kvadrat

Fiord 2 (EU Ecolabel)



Kvadrat's Fiord 2 has been awarded the EU Ecolabel

Arper grade
CHAIRS: F
SOFAS: F
PANELS: F



FD00101



FD00121



FD00151



FD00171



FD00191



FD00201



FD00251



FD00262



FD00271



FD00322



FD00351



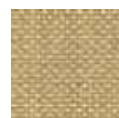
FD00371



FD00382



FD00391



FD00422



FD00442



FD00451



FD00521



FD00551



FD00562



FD00571



FD00581



FD00591



FD00642



FD00662



FD00672



FD00721



FD00751



FD00762



FD00771



FD00782



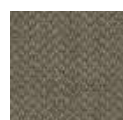
FD00791



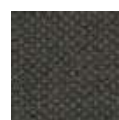
FD00821



FD00862



FD00951



FD00961



FD00971



FD00981



FD00991

kvadrat

Floyd

Arper grade
CHAIRS: C
SOFAS: C
PANELS: C



F100103



F100123



F100143



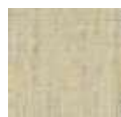
F100163



F100193



F100213



F100223



F100243



F100263



F100363



F100413



F100623



F100643



F100663



F100693



F100723



F100763



F100783



F100793



F100923



F100943



F100963



F100983

kvadrat

Hallingdal 65 (EU Ecolabel)



Kvadrat's Hallingdal 65 has been awarded the EU Ecolabel

Arper grade
CHAIRS: G
SOFAS: G
PANELS: G(*)



HA00103



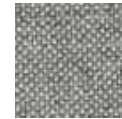
HA00100



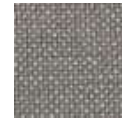
HA00110



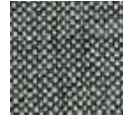
HA00113



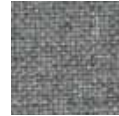
HA00116



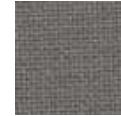
HA00123



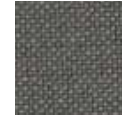
HA00126



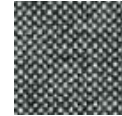
HA00130



HA00143



HA00153



HA00166



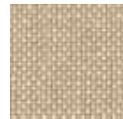
HA00173



HA00180



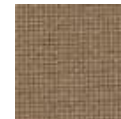
HA00190



HA00200



HA00220



HA00224



HA00227



HA00270



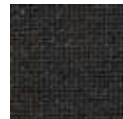
HA00350



HA00368



HA00370



HA00376



HA00390



HA00407



HA00420



HA00457



HA00526



HA00547



HA00563



HA00573



HA00590



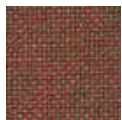
HA00596



HA00600



HA00657



HA00660



HA00674



HA00680



HA00687



HA00694



HA00702



HA00723



HA00733



HA00750



HA00753



HA00754



HA00763



HA00764



HA00773



HA00810



HA00840



HA00850



HA00890



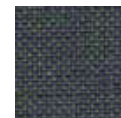
HA00907



HA00944



HA00960



HA00968



HA00980

Not available for Paravan collection

kvadrat

Jaali

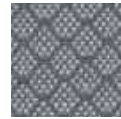


Kvadrat's Jaali has been awarded the EU Ecolabel

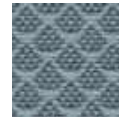
Arper grade
CHAIRS: **G**
SOFAS: **G**
PANELS: **G**



JA00101



JA00121



JA00141



JA00171



JA00201



JA00341



JA00561



JA00571



JA00591



JA00611



JA00651



JA00671



JA00751



JA00761



JA00781



JA00791



JA00871



JA00951



JA00961



JA00991

kvadrat

Patio

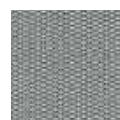
Arper grade
CHAIRS: D
SOFAS: D



PT00100



PT00110



PT00140



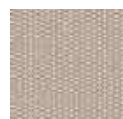
PT00150



PT00170



PT00200



PT00210



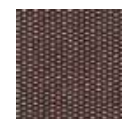
PT00220



PT00230



PT00340



PT00370



PT00410



PT00430



PT00440



PT00450



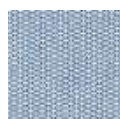
PT00550



PT00570



PT00650



PT00730



PT00740



PT00750



PT00780



PT00840



PT00970

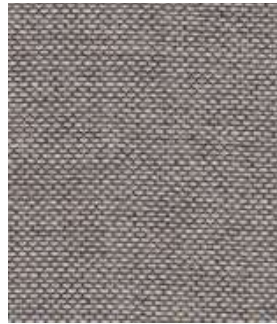
kvadrat

Re-wool



Kvadrat's Re-wool
has been awarded
the EU Ecolabel

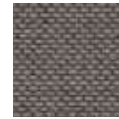
Arper grade
CHAIRS: E
SOFAS: E
PANELS: E



RW00108



RW00128



RW00158



RW00198



RW00218



RW00358



RW00378



RW00408



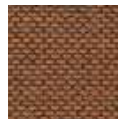
RW00448



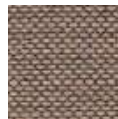
RW00458



RW00558



RW00568



RW00628



RW00648



RW00658



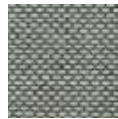
RW00718



RW00758



RW00768



RW00828



RW00858



RW00868

kvadrat

Remix 3 (EU Ecolabel)



Kvadrat's Remix 3
has been awarded
the EU Ecolabel

Arper grade
CHAIRS: C
SOFAS: D
PANELS: C



RX00123



RX00113 (*)



RX00126



RX00133



RX00136



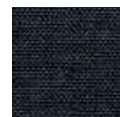
RX00143



RX00152



RX00163



RX00173



RX00183



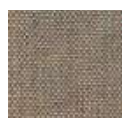
RX00196



RX00223 (*)



RX00233



RX00242



RX00252



RX00266



RX00276



RX00286



RX00296



RX00326



RX00346



RX00356



RX00362



RX00373



RX00383



RX00393



RX00406



RX00412



RX00422



RX00433



RX00443



RX00452



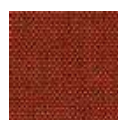
RX00516



RX00536



RX00543



RX00566



RX00606



RX00612



RX00632



RX00643



RX00653



RX00662



RX00672



RX00682



RX00686



RX00692



RX00716



RX00722



RX00733



RX00743



RX00753



RX00762



RX00773



kvadrat

Remix 3 (EU Ecolabel)



Kvadrat's Remix 3
has been awarded
the EU Ecolabel

Arper grade
CHAIRS: C
SOFAS: D
PANELS: C



RX00783



RX00796



RX00816



RX00836



RX00842



RX00852



RX00866



RX00873



RX00906



RX00912



RX00923



RX00933



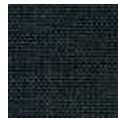
RX00942



RX00954



RX00962



RX00973



RX00982



RX00996

(*) RX00113 - RX00223: only for the cushions Owl, Lines, Pleats e Gego.

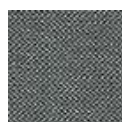
kvadrat

Revive 1

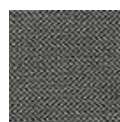
Arper grade
CHAIRS: **B**
SOFAS: **B**
PANELS: **B**



R100144



R100154



R100164



R100184



R100194



R100224



R100274



R100284



R100324



R100384



R100414



R100424



R100434



R100454



R100524



R100534



R100634



R100664



R100754



R100764



R100774



R100834



R100914



R100944



R100974

kvadrat

Steelcut 3



Kvadrat's Steelcut 3 has been awarded the EU Ecolabel

Arper grade
CHAIRS: G
SOFAS: H
PANELS: G



SE00545



SE00110



SE00120



SE00140



SE00155



SE00160



SE00180



SE00190



SE00220



SE00240



SE00252



SE00265



SE00365



SE00402



SE00445



SE00452



SE00502



SE00512



SE00522



SE00535



SE00552



SE00562



SE00605



SE00612



SE00655



SE00662



SE00672



SE00682



SE00695



SE00732



SE00742



SE00775



SE00780



SE00912



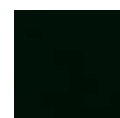
SE00922



SE00932



SE00962



SE00975



SE00985

kvadrat
Steelcut Trio 3



Kvadrat's Steelcut Trio 3 has been awarded the EU Ecolabel

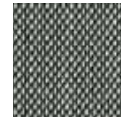
Arper grade
CHAIRS: G
SOFAS: H
PANELS: G



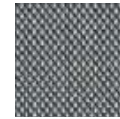
ST00113



ST00105



ST00124



ST00133



ST00153



ST00176



ST00195



ST00205



ST00213



ST00226



ST00236



ST00246



ST00253



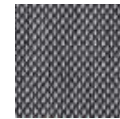
ST00266



ST00276



ST00283



ST00336



ST00376



ST00383



ST00416



ST00426



ST00436



ST00446



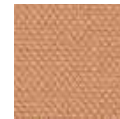
ST00453



ST00466



ST00476



ST00506



ST00515



ST00526



ST00533



ST00553



ST00576



ST00616



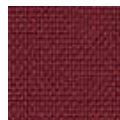
ST00636



ST00645



ST00666



ST00686



ST00713



ST00716



ST00746



ST00756



ST00776



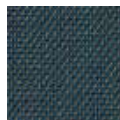
ST00796



ST00806



ST00865



ST00883



ST00906



ST00916



ST00946



ST00953



ST00966



ST00976



ST00983



ST00996

kvadrat

Tonus 4



Kvadrat's Tonus 4
has been awarded the
EU Ecolabel

Arper grade
CHAIRS: F
SOFAS: G
PANELS: F



T300100



T300118



T300125



T300128



T300129



T300130



T300131



T300132



T300135



T300207



T300210



T300216



T300224



T300240



T300244



T300364



T300374



T300394



T300424



T300440



T300454



T300464



T300474



T300508



T300554



T300605



T300608



T300609



T300610



T300613



T300615



T300619



T300631



T300634



T300636



T300654



T300664



T300684



T300690



T300754



T300764



T300854



T300914



T300934



T300954



T300964



T300974

kvadrat

Vidar 4



Kvadrat's Vidar 4 has been awarded the EU Ecolabel

Arper grade J
CHAIRS: J
SOFAS: J
PANELS: J



VD00106



VD00123



VD00133



VD00143



VD00146



VD00152



VD00182



VD00222



VD00323



VD00333



VD00353



VD00363



VD00386



VD00443



VD00456



VD00472



VD00526



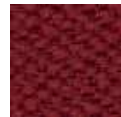
VD00542



VD00554



VD00556



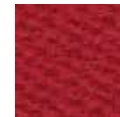
VD00582



VD00622



VD00633



VD00653



VD00656



VD00676



VD00693



VD00723



VD00733



VD00743



VD00772



VD00786



VD00872



VD00913



VD00932



VD00943



VD00956



VD00972



VD01062



VD01511



VD01880



Jet

Arper grade
CHAIRS: A
SOFAS: A
PANELS: A



(*) Not available for Cila and Cila Go collections





Jet

Arper grade
CHAIRS: A
SOFAS: A
PANELS: A



JE09606



JE09607



JE09608



JE09609



JE09610



JE09701



JE09702



JE09703



JE09704



JE09803



JE09804



JE09805



JE09806

(*) Not available for Cila and Cila Go collections

camira
Main Line Flax

Arper grade
CHAIRS: C
SOFAS: C
PANELS: C



MFMLF01



MFMLF02



MFMLF03



MFMLF05



MFMLF06



MFMLF07



MFMLF08



MFMLF09



MFMLF10



MFMLF12



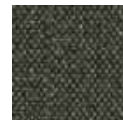
MFMLF13



MFMLF14



MFMLF15



MFMLF16



MFMLF17



MFMLF18



MFMLF19



MFMLF20



MFMLF21



MFMLF22



MFMLF23



MFMLF24



MFMLF25



MFMLF26



MFMLF28



MFMLF29



MFMLF31



MFMLF32



MFMLF34



MFMLF35



MFMLF36



MFMLF37



MFMLF40



MFMLF43



MFMLF44



MFMLF45



MFMLF46



MFMLF47



MFMLF48



MFMLF49



MFMLF50



MFMLF51



MFMLF52



MFMLF53



MFMLF54



MFMLF55



MFMLF56



MFMLF57



MFMLF59



MFMLF60



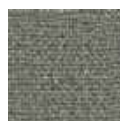
MFMLF61



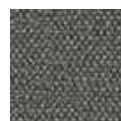
MFMLF62



MFMLF63



MFMLF64



MFMLF65



MFMLF66



MFMLF67

camira

Phoenix

Arper grade
CHAIRS: A
SOFAS: A
PANELS: A



PHYP005



PHYP009



PHYP011



PHYP019



PHYP026



PHYP045



PHYP046



PHYP051



PHYP076



PHYP081



PHYP082



PHYP084



PHYP097



PHYP100



PHYP105



PHYP106



PHYP107



PHYP108



PHYP110



PHYP112



PHYP113

camira
Synergy

Arper grade
CHAIRS: C
SOFAS: C
PANELS: C



SNLDS05



SNLDS07



SNLDS08



SNLDS16



SNLDS17



SNLDS18



SNLDS19



SNLDS20



SNLDS21



SNLDS22



SNLDS23



SNLDS24



SNLDS25



SNLDS26



SNLDS27



SNLDS28



SNLDS29



SNLDS31



SNLDS32



SNLDS33



SNLDS34



SNLDS35



SNLDS36



SNLDS37



SNLDS38



SNLDS39



SNLDS40



SNLDS41



SNLDS42



SNLDS43



SNLDS44



SNLDS45



SNLDS46



SNLDS47



SNLDS48



SNLDS49



SNLDS50



SNLDS51



SNLDS52



SNLDS53



SNLDS54



SNLDS55



SNLDS56



SNLDS57



SNLDS58



SNLDS59



SNLDS60



SNLDS61



SNLDS62



SNLDS63



SNLDS64



SNLDS65



SNLDS66



camira
Synergy

Arper grade
CHAIRS: C
SOFAS: C
PANELS: C



SNLDS67



SNLDS68



SNLDS69



SNLDS70



SNLDS71



SNLDS72



SNLDS73



SNLDS74



SNLDS75



SNLDS76



SNLDS77



SNLDS78



SNLDS79



SNLDS80



SNLDS81



SNLDS82



SNLDS84



SNLDS85



SNLDS86



SNLDS87



SNLDS88

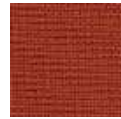
camira

Urban

Arper grade
CHAIRS: **B**
SOFAS: **B**
PANELS: **B**



UPYN009



UPYN027



UPYN076



UPYN079



UPYN082



UPYN083



UPYN091



UPYN094



UPYN108



UPYN145



UPYN148



UPYN159



UPYN160



UPYN200



UPYN202



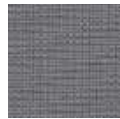
UPYN203



UPYN204



UPYN205



UPYN206



UPYN207



UPYN208



UPYN209



UPYN210



UPYN211



UPYN212

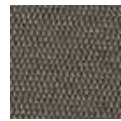
maharam

Messenger

Arper grade
CHAIRS: D
SOFAS: D
PANELS: D



MS00001



MS00007



MS00008



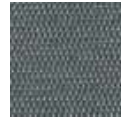
MS00024



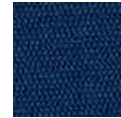
MS00025



MS00029



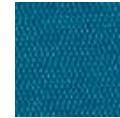
MS00031



MS00038



MS00040



MS00041



MS00045



MS00046



MS00048



MS00050



MS00051



MS00053



MS00054



MS00058



MS00060



MS00061



MS00062



MS00063



MS00066



MS00067



MS00069



MS00070



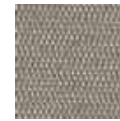
MS00071



MS00072



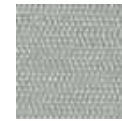
MS00076



MS00077



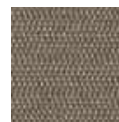
MS00078



MS00079



MS00080



MS00081



MS00082



MS00083



MS00084



MS00085



MS00086



MS00087



MS00088



MS00089



MS00090



MS00091



MS00092



MS00093



MS00094



MS00095



MS00096



MS00097



MS00098



Arper grade
CHAIRS: C
SOFAS: C



HE00001



HE00006



HE00009



HE00011



HE00012



HE00015



HE00016



HE00017



HE00018



HE00021



HE00022



HE00023



Arper grade
CHAIRS: C
SOFAS: C



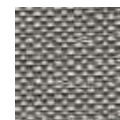
SV00233



SV00234



SV00235



SV00236



SV00349



SV00350



SV00351



SV00352



SV00353



SV00354



SV00355



Istituito nel 1992, il marchio comunitario di qualità ecologica o Ecolabel, il cui logo è rappresentato da un fiore, è uno speciale sistema di certificazione creato per aiutare i consumatori europei a scegliere prodotti e servizi più ecologici e più rispettosi dell'ambiente.

Established in 1992, the EU Eco-label "Flower" is a unique certification scheme aimed to help European consumers distinguish greener, more environmentally friendly, products and services.

Hinter der "Blume", dem 1992 ins Leben gerufenen EU-Umweltzeichen, steckt ein einzigartiges Zertifizierungssystem, das dem europäischen Verbraucher das Erkennen umweltfreundlicherer Produkte und Dienstleistungen erleichtern soll.

Établi en 1992, le label écologique de l'EU symbolisé par la "Fleur" est un système d'homologation unique destiné à aider les consommateurs européens à discerner les produits et services plus verts et plus favorables à l'environnement.

Creada en 1992, la etiqueta ecológica de la UE, también conocida como "la flor", constituye un sistema de certificación único, cuyo objetivo es ayudar a los consumidores europeos a identificar los productos y servicios más ecológicos y respetuosos del medio ambiente.

Care instructions

Fabrics:

It is important that fabrics are cleaned regularly in order to keep them looking their best and extend their life. Powder and dirt can cause wear and tear on fabrics and as such we advise that you clean them using a low-pressure vacuum cleaner, preferably once a week.

Non-greasy stains can be removed by delicately dabbing them with a clean cloth that won't leave any lint or a sponge that has been soaked in clean, warm water then thoroughly squeezed out. If necessary, you can then soak with soapy water or water with liquid washing up detergent added (see formulas). Once this is done, soak the surface with clean, tepid water.

For greasy stains, use a dry stain remover. Ensure that you comply with the manufacturer's instructions as closely as possible. If you have any doubts, test the cleaning product on a discreet area in order to check its effect. Wait for at least 24 hours to see if any problems arise.

Formulas: The soapy solution consists of ¼ deciliter soap flakes per liter of hot water, which must then be cooled before use. The solution with dishwashing liquid is made up of max 1 teaspoon of detergent per every liter of water. If you use concentrated products, pour only a few drops into each liter of product.

Coated fabrics:

Regularly dust using a microfibre cloth. In the event of stains, clean using a cloth that has been dampened using tepid water or water with some neutral soap in it. Do not use abrasive products, ethyl alcohol and solvent-based detergents. If you have any doubts, test the cleaning product on a discreet area in order to check its effect. Wait for at least 24 hours to see if any problems arise.

Structural mesh in knitted fabric:

Made to Arper's technical specifications with post-consumption recycled polyester yarns, the knitted fabric mesh is soft and comfortable. The particular structure makes it self-draining and breathable, this ensures rapid passage of the water and makes it quick drying. It has excellent resistance to weathering, humidity and temperature changes, also thanks to the addition of anti-UV stabilisers that prevent and slow down natural ageing without the addition of substances dangerous to the environment or to health. **Maintenance:** It is important to regularly clean the fabric in order to maintain its appearance in the best conditions and to extend its life. Dust and dirt wear out the fabric, so it is recommended to clean it with low suction vacuum cleaners, preferably once a week. Non-grease stains are eliminated by gently dabbing them with a clean cloth that leaves no residue or a sponge immersed in clean hot water and then well squeezed. If necessary, wash by dipping the cloth used for cleaning in soapy water or water with the addition of liquid dishwashing detergent (see formulas). Then dab

the surface with clean warm water, letting it dry completely.

For grease stains, it is possible to use dry stain removers, scrupulously following the manufacturer's instructions.

Do not use hot steam, do not dry with electrical appliances with temperatures above 50°C. Do not use abrasive substances or chemical solvents.

In case of doubt, test the cleaning product on a part hidden from view to verify the result, waiting at least 24 hours for any problems to arise.

Formulas: The soapy solution consists of 1/4 dl of soap flakes for each litre of hot water, which then needs to be cooled before use.

The solution with liquid dishwashing detergent consists of up to 1 teaspoon of detergent per litre of water. If you use concentrated products, pour only a few drops into each litre of product.

Leather, hard leather:

Take care not to place products in direct sunlight as this can alter the colour of these materials. Avoid exposing the materials to heat sources.

Regularly dust using a soft, dry cloth. Any stains need to be removed as quickly as possible to prevent them from soaking in deeply. Use absorbent paper or a cloth to absorb them straight away. For cleaning, use specific, high-quality leather cleaning products and comply with the manufacturer's instructions as closely as possible.

If you have any doubts, test the cleaning product on a discreet area in order to check its effect. Wait for at least 24 hours to see if any problems arise. Alternatively, use a cloth that has been dampened with some water and well-diluted neutral soap. Do not rub. Instead, delicately dab the stain working from the edge into the centre, then dry immediately after treatment.

Wood:

Dust and common domestic stains can be removed using a solution made from water and well-diluted neutral soap. Under no circumstances should you use commercial stain removers for cleaning. In order to avoid scratching the products, use a soft cloth and clean using circular movements. Do not use solvents or abrasive products. Always dry surfaces using a dry cloth. If you have any doubts, test the cleaning product on a discreet area in order to check its effect. Wait for at least 24 hours to see if any problems arise.

Wood for outdoor use:

Wood is a natural material suitable for outdoor use. For a sustainable approach, Arper selects only essences from Europe within an FSC certified chain of custody. The use of water-based paints, safe for health and the environment, guarantees a high level of protection and durability for outdoor use, with a reduced

Care instructions

environmental impact.

Maintenance: Dust and the most common stains can be removed using a well-diluted solution of water and neutral soap. It is absolutely necessary not to use commercial stain removers for cleaning. To avoid scratching, use a soft cloth and clean with gentle, circular movements (especially the opaque finishes, if subjected to action that is too aggressive, may develop shiny halos in spots). Do not use waxes for furniture or floors, solvents or abrasive products. Always dry the surfaces with a dry cloth. Do not use the pressure washer or high-pressure water, which may damage the surface of the wood. In case of doubt, test the cleaning solution on a part hidden from view to verify the result, waiting at least 24 hours for any problems to arise. Immediately remove any liquids spilled on the surface of the wood, avoid the accumulation of water or other liquids that could damage the product.

Wood can have impurities and imperfections, which fall within accepted quality standards, and should be considered as distinctive features that attest to its natural beauty. Periodic and correct maintenance extends the life of the product.

Plastic Materials:

Regularly plastic surfaces dust using a microfibre cloth. Dust and common domestic stains can be removed using a cloth or sponge that has been dampened in tepid water or water with some well-diluted neutral detergent in it.

Do not use commercial stain removers or aggressive products for cleaning. In order to avoid scratching the products, use a soft cloth and clean using circular movements. Under no circumstances should you use solvent-based detergents or abrasive products. If you have any doubts, test the cleaning product on a discreet area in order to check its effect. Wait for at least 24 hours to see if any problems arise.

Chrome-plated, anodised or painted metal surfaces:

Clean using specific products such as regular detergents for domestic surfaces diluted in tepid water, provided they are not abrasive and do not contain acid or bleach. Avoid using sponges and scourers made from synthetic fibre or metal as these could permanently mark surfaces. After cleaning, rinse products carefully to prevent traces of detergent from reacting with the surface finish to avoid dulling or oxidation. After cleaning, dry with a shammy cloth. The use of polish on chrome-plated or painted surfaces is not recommended. These products should always be used with caution and only by experts as their abrasive qualities could irreparably damage surfaces. If you have any doubts, test the cleaning product on a discreet area in order to check its effect. Wait for at least 24 hours to see if any problems arise.

Stainless steel:

Clean on a regular basis (every 15-20 days) using a soft damp cloth or common products specific for stainless steel.

Table Tops:

Clean and remove any substance that accidentally comes into contact with the surface as quickly as possible using a damp cloth or microfibre cloth and some neutral detergent diluted in tepid water. Always dry after cleaning. Aggressive detergents containing bleach or abrasive detergents (such as bathroom cream cleaner) must never be used. Take care not to rub too hard in order to avoid scratching the surface. Avoid using sponges or scourers made from synthetic fibres or metal.

If you have any doubts, test the cleaning product on a discreet area in order to check its effect. Wait for at least 24 hours to see if any problems arise.

Glass surfaces

The tempered glass used by Arper ensures high levels of safety. In the event of a breakage, the glass smashes into tiny, rounded fragments which will not cause a cut. In any case, you should avoid hitting the glass with hard or sharp objects and the glass should not be exposed to extreme shifts in temperature (i.e. do not place very hot or cold items on it).

Regularly dust glass using a microfibre cloth. Clean using specific products or neutral soap applied using a soft, clean cloth. Do not use powered detergents or abrasive detergents that could scratch the glass, causing irrevocable damage to the surface. If you have any doubts, test the cleaning product on a discreet area in order to check its effect. Wait for at least 24 hours to see if any problems arise.

Marble and Venetian Terrazzo surfaces:

Clean and remove any substance that accidentally comes into contact with the surface as quickly as possible using a damp cloth or microfibre cloth and some tepid water or a specialist detergent. Always dry immediately after cleaning. Take care not to rub too hard in order to avoid scratching the marble. If you have any doubts, test the cleaning product on a discreet area in order to check its effect. Wait for at least 24 hours to see if any problems arise.

Marble is a calcareous, porous material that is susceptible to reactions with acidic substances. Marble can absorb fatty or oily substances and colourants. These can soak into the material and stain the surface. During use, you are advised against using objects that can scratch or cause abrasions to the surface, such as acidic products (Coca Cola, vinegar, acidic detergents) and colourants (wine, coffee, fruit, sugary liquid, tomato sauce, very hard water etc.).

Care instructions

Indications for use & maintenance of “outdoor” products:

Arper guarantees, through laboratory tests, the strength and durability of its products. It should be noted, however, that any material exposed to atmospheric agents and the elements, even if treated specifically for outdoor use, will undergo a gradual deterioration over time, the extent of which is closely related to the geographical position, the evolution of climatic phenomena, the more or less marked presence of humidity, salinity (poolside, marine environments).

Use and maintenance are conditions that determine the actual yield and maintenance in good condition of the product over time.

It is therefore recommended to avoid critical external conditions such as prolonged and direct exposure to sunlight, pouring rain and aggressive environments such as proximity to the seaside or where the sea breeze can bring high levels of moisture with marine salinity or abrasive sands. Do not place wooden products on lawns or uneven surfaces, where any stagnation of water may damage the parts in contact. In any case, never let water or other liquids stagnate on the product. In the vicinity of plants or trees, remove any leaves, flowers or organic substances that could rest on the surfaces of the product, to prevent that their deterioration stains the paints or fabrics. In case of exposure to rain, as soon as possible, remove the pillows (if any) from the chair and let them dry separately to facilitate drying and drainage of the water.

Periodic cleaning is recommended, following the recommended indications for the different materials. For short periods when the product is not in use, it is recommended to cover it with the protective cover. In case of prolonged non-use or during the winter period, it is recommended to clean the product, allow it to dry well, and store it in a well-aerated indoor place, protected from the elements. The pillows (if any) must be removed from the chair, cleaned and left to dry well, and finally, stored in a well-aerated indoor place, protected from the elements.

I colori visualizzati sono puramente indicativi e possono variare rispetto alla realtà. Rivolgersi ad Arper o al proprio rivenditore di fiducia per ricevere un campione colore o per maggiori informazioni.

Arper SPA si riserva di apportare modifiche e/o migliorie di carattere tecnico ed estetico ai propri modelli e prodotti in qualsiasi momento e senza preavviso.

Per maggiori informazioni visitate il sito arper.com

Colours shown are used for reference only and may look different in reality. Please contact Arper or your retailer to receive a colour sample or more information.

Arper SPA reserves the right to make modifications and improvements of a technical or aesthetic nature to the products at any time without notice.

For further information, please visit arper.com

Bei den angezeigten Farben handelt es sich um reine Farbbeispiele, die von der Realität abweichen können.

Für Farbmuster und nähere Informationen wenden Sie sich bitte an Arper oder an den Händler Ihres Vertrauens.

Arper SPA behält sich das Recht vor, jederzeit und ohne Vorankündigung Veränderungen und Verbesserungen technischen und ästhetischen Charakters an seinen Produkten vorzunehmen.

Für weitere Informationen besuchen Sie bitte unsere Webseite arper.com

La reproduction photographique des couleurs n'est que purement indicative et peut être différente de la réalité. S'adresser à Arper ou à votre revendeur de confiance pour recevoir un échantillon de couleur ou pour de plus amples informations.

Arper SPA se réserve le droit d'apporter des modifications et/ou des améliorations d'ordre technique et esthétique à ses produits, et ceci à tout moment et sans préavis.

Pour plus d'informations, rendez-vous sur le site arper.com

Los colores visualizados son meramente indicativos y pueden diferir de la realidad. Para recibir una muestra del color o para más información, contactar a Arper o a su distribuidor de zona.

Arper SPA se reserva el derecho de realizar cambios y/o mejoras técnicas y estéticas en sus productos en cualquier momento y sin previo aviso.

Para más información, visite arper.com"

Italy

Monastier (TV) — Headquarters and showroom
Arper SPA
Via Lombardia 16
31050 Monastier di Treviso (TV)
T +39 0422 7918
F +39 0422 791800
info@arper.com
www.arper.com

Commerciale Italia
T +39 0422 791905
F +39 0422 791900
commerciale@arper.com

Export Office
sales@arper.com

Milan — Showroom
Via Pantano 30
20122 Milan
T +39 02 89093865
milano@arper.com

EUROPE

UK

London — Subsidiary and showroom
Arper UK LTD
11 Clerkenwell Road
London EC1M 5PA
T +44 (0) 20 7253 0009
london@arper.com

Germany

Cologne — Showroom
Design Post Köln
Deutz-Mülheimer-Str. 22a
50679 Köln
T +49 221 690 650
info@designpost.de

Fruchtof München — Meeting Hub
2. Innenhof, 2. Etage
Gotzinger Straße 52b
D-81371 München
T +49 171 1080976
muenchen@arper.com

Norway

Oslo — Showroom
Drammensveien 130
0277 Oslo
T +47 908 202226
norway@arper.com

Sweden

Stockholm — Branch
T +46 705 101216
sweden@arper.com

The Netherlands

Amsterdam — Showroom
Design Post
Cruquiusweg 111-L
1019 AG Amsterdam
T +31 (0)20 705 1555
showroom@beltane.nl

AMERICA

USA

New York — Subsidiary and showroom
Arper USA Inc.
476 Broadway, Suite 2F
NY 10013 New York
T +1 (212) 647 8900
infousa@arper.com

Chicago — Showroom
The Merchandise Mart
Space#346 - 3rd Floor
Chicago
T +1 (336) 434 2366
infousa@arper.com

High Point, North Carolina — Production
and logistics site
660 Southwest St
High Point, NC 27260
T +1 (336) 434 2370
F +1 (212) 647 8912
infousa@arper.com

Los Angeles — Showroom
550 South Hope St., Suite 275
90071 Los Angeles
T +1 (336) 434 2382
infousa@arper.com

Mexico

Mexico City — Subsidiary and showroom
Culiacan 123, Piso 9
Col. Hipodromo Condesa
Delegation Cuauhtémoc
06170 – Ciudad de México
Mexico
T +52 1 62714417
T +52 1 62714419
infoatam@arper.com

ASIA

Japan

Arper Japan K.K. — Subsidiary and showroom
HT Jingu Gaien Bldg.8F
Minato-ku Kita-Aoyama 2-7-22
Tokyo 107-0061
T +81 3 5775 0008
F +81 3 5775 0009
carejpn@arper.com

China

Shanghai — Subsidiary
爱尔派 (上海) 家具设计有限公司
Shanghai – China
china@arper.com

Singapore

Singapore — Branch
c/o 3 Lim Teck Kim Road, #01-01 Genting Centre
088934 Singapore
singapore@arper.com

UAE

Arper Middle East — Subsidiary and showroom
U-Bora Towers - Unit 1901
Business Bay
Dubai
T +971 529255633
infome@arper.com