

Cassina

Fabrics

- Indoor
- Outdoor



Indoor fabrics

Cat. E

[Eremo](#) **NEW**

[Elba](#) **NEW**

[Perbacco](#)

Cat. F

[Champ](#)

[Fortuny](#)

[Francoforte](#)

[Marocco](#)

[Tensing](#)

Cat. L

[Lincoln](#)

[Linus](#) **NEW**

[Lipari](#)

[Look](#)

[Ortigia](#)

[Luxor](#) **NEW**

Cat. O

[Otterlo](#)

[Unimelange](#)

Cat. S

[Samsara](#)



Eremo (E)

A three-dimensional canvas that blends artificial fibers with the warm feel of wool. This lightweight fabric has a relief effect and subtle shades that lend visual depth to a soft surface.

Well-balanced sensations of coolness and warmth combined with good structure ensure excellent resistance to wear and tear.

Composition:

45% acrylic

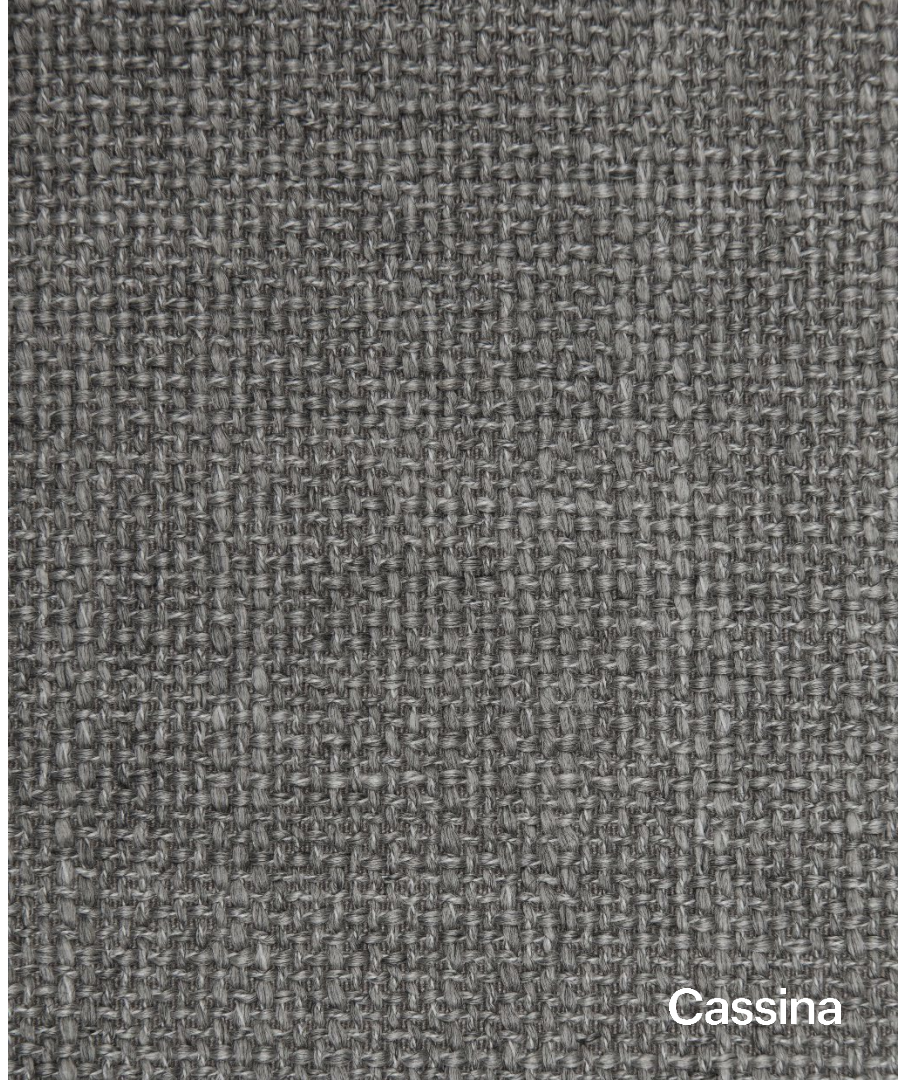
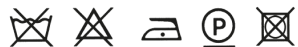
33% polyester

22% wool

Martindale: 40.000

Pilling: 4-5

Color fastness: 5



Eremo (E)

A three-dimensional canvas that blends artificial fibers with the warm feel of wool. This lightweight fabric has a relief effect and subtle shades that lend visual depth to a soft surface.

Well-balanced sensations of coolness and warmth combined with good structure ensure excellent resistance to wear and tear.

Composition:

45% acrylic

33% polyester

22% wool

Martindale: 40.000

Pilling: 4-5

Color fastness: 5



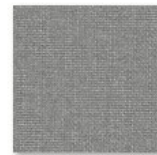
EREMO 13E500
BIANCO



EREMO 13E501
AVORIO



EREMO 13E502
BEIGE



EREMO 13E503
PERLA



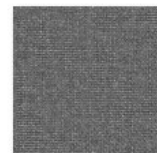
EREMO 13E504
TALPA



EREMO 13E505
ANTRACITE



EREMO 13E506
CARBONE



EREMO 13E507
ALLUMINIO



EREMO 13E508
VINACCIA



EREMO 13E509
RUGGINE



EREMO 13E510
CIELO



EREMO 13E511
NOTTE



EREMO 13E512
PETROLIO



EREMO 13E513
OTTANIO



EREMO 13E514
OLIVA



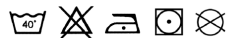
EREMO 13E515
OCRA

Elba (E)

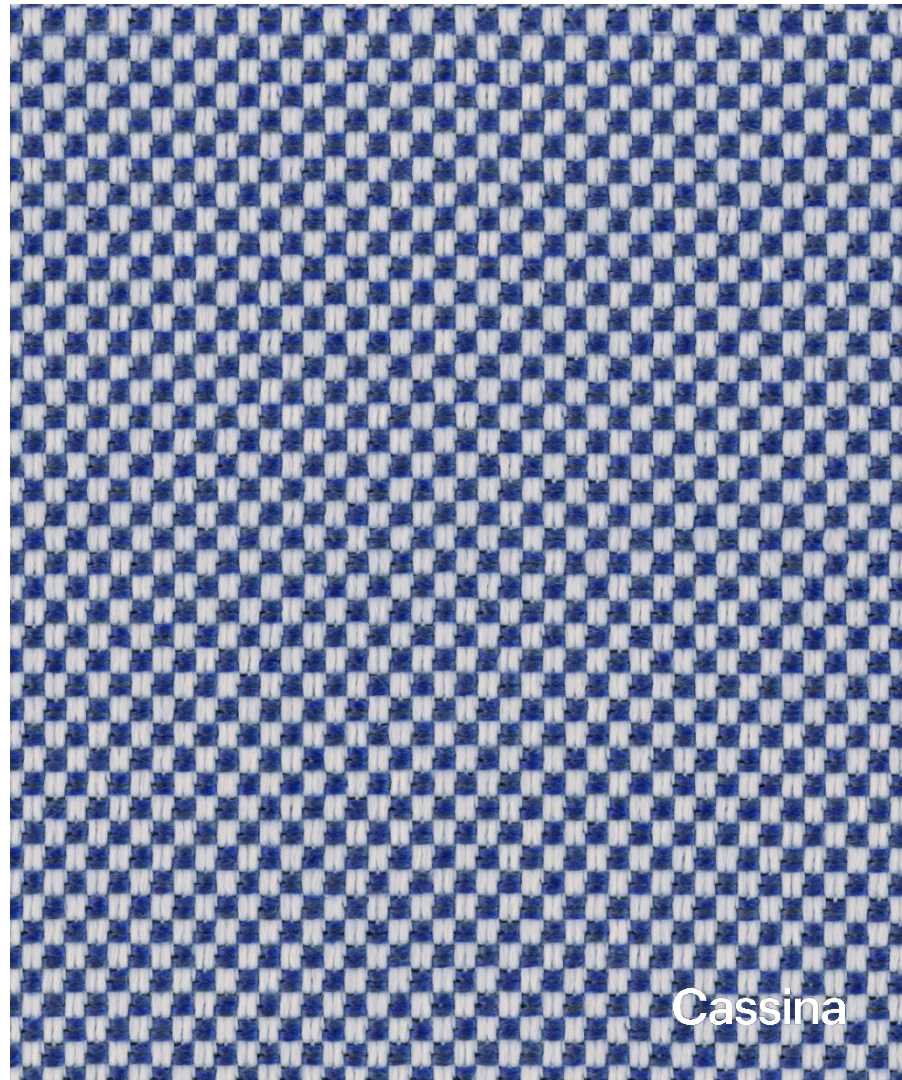
Elba's characteristic qualities make it perfect for any environment; a ductile fabric, for both indoors and outdoors, it has a warm, soft and extremely modern look. The Panama construction with polypropylene yarn warp and weft guarantees top-level performance, making it an innovative and flexible fabric notable for its excellent resistance to abrasion, pilling, exposure to light and weathering. It is also an environmentally friendly fabric, not only for its recyclable yarns, but also for its ecological production process which reduces waste.

Composition:
100% polypropylene

Martindale: 35.000
Pilling: 4-5
Color fastness: 7-8



Indoor/
outdoor

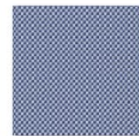
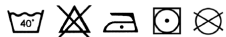


Elba (E)

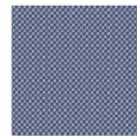
Elba's characteristic qualities make it perfect for any environment; a ductile fabric, for both indoors and outdoors, it has a warm, soft and extremely modern look. The Panama construction with polypropylene yarn warp and weft guarantees top-level performance, making it an innovative and flexible fabric notable for its excellent resistance to abrasion, pilling, exposure to light and weathering. It is also an environmentally friendly fabric, not only for its recyclable yarns, but also for its ecological production process which reduces waste.

Composition:
100% polypropylene

Martindale: 35.000
Pilling: 4-5
Color fastness: 7-8



Elba - 13E476 -
BLU - BIANCO



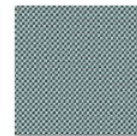
Elba - 13E477 -
BLU - GRIGIO



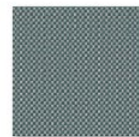
Elba - 13E478 -
BLU



Elba - 13E479 -
BLU - VERDE



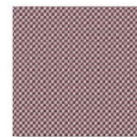
Elba - 13E480 -
VERDE
- BIANCO



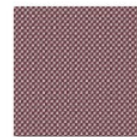
Elba - 13E481 -
VERDE
- GRIGIO



Elba - 13E482 -
VERDE



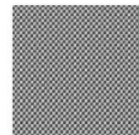
Elba - 13E483 -
ROSSO
- BIANCO



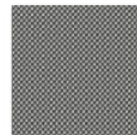
Elba - 13E484 -
ROSSO
- GRIGIO



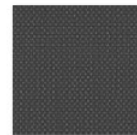
Elba - 13E485 -
ROSSO



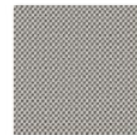
Elba - 13E486 -
GRIGIO SCURO
- BIANCO



Elba - 13E487 -
GRIGIO SCURO
- GRIGIO
CHIARO



Elba - 13E488 -
GRIGIO SCURO



Elba - 13E489 -
GRIGIO
CHIARO
- BIANCO



Elba - 13E490 -
GRIGIO
CHIARO



Elba - 13E491 -
BIANCO

Perbacco (E)

A fabric that combines technique with aesthetics. Perbacco's irregular yarn recalls ancient fabrics that were made exclusively by hand. The grain, with its apparent simplicity and open texture, is on the contrary extremely compact thanks to the elaborate technique of its structure. The fibrous composition favors natural fibers such as linen and cotton worked by means of a sophisticated technique in order to obtain an extremely pleasant hand.

Composition:

59% linen

25% acrylic

6% cotton

6% poliammyde

4% polyester

Martindale: 26.000

Pilling: 4

Color fastness: 4-5



Perbacco (E)

A fabric that combines technique with aesthetics. Perbacco's irregular yarn recalls ancient fabrics that were made exclusively by hand. The grain, with its apparent simplicity and open texture, is on the contrary extremely compact thanks to the elaborate technique of its structure. The fibrous composition favors natural fibers such as linen and cotton worked by means of a sophisticated technique in order to obtain an extremely pleasant hand.

Composition:

59% linen
25% acrylic
6% cotton
6% poliammyde
4% polyester

Martindale: 26.000

Pilling: 4

Color fastness: 4-5



PERBACCO
13E436



PERBACCO
13E437



PERBACCO
13E438



PERBACCO
13E439



PERBACCO
13E440



PERBACCO
13E441



PERBACCO
13E442



PERBACCO
13E443



PERBACCO
13E444



PERBACCO
13E445



PERBACCO
13E446



PERBACCO
13E447

Champ (F)

Classic and modern are woven together in this fabric. Reminiscent of ancient cloths from the Indies, it has a lightness, compactness and pliability that make it a totally on-trend product. Its texture is animated by patterns, mainly featuring natural yarns in viscose, cotton, linen and silk, teamed with a tiny percentage of acrylic. A good quality fabric, resistant and with very elegant tactile and visual effects.

Composition:

41% viscose

26% acrylic

18% cotton

7% linen

7% Polyester

1% silk

Martindale: 28.000

Pilling: 3-4

Color fastness: 4-5



Champ (F)

Classic and modern are woven together in this fabric. Reminiscent of ancient cloths from the Indies, it has a lightness, compactness and pliability that make it a totally on-trend product. Its texture is animated by patterns, mainly featuring natural yarns in viscose, cotton, linen and silk, teamed with a tiny percentage of acrylic. A good quality fabric, resistant and with very elegant tactile and visual effects.

Composition:

41% viscose

26% acrylic

18% cotton

7% linen

7% Polyester

1% silk

Martindale: 28.000

Pilling: 3-4

Color fastness: 4-5



Champ (F)

Classic and modern are woven together in this fabric. Reminiscent of ancient cloths from the Indies, it has a lightness, compactness and pliability that make it a totally on-trend product. Its texture is animated by patterns, mainly featuring natural yarns in viscose, cotton, linen and silk, teamed with a tiny percentage of acrylic. A good quality fabric, resistant and with very elegant tactile and visual effects.

Composition:

41% viscose

26% acrylic

18% cotton

7% linen

7% Polyester

1% silk

Martindale: 28.000

Pilling: 3-4

Color fastness: 4-5



CHAMP
13F353



CHAMP
13F354



CHAMP
13F355



CHAMP
13F356



CHAMP
13F357



CHAMP
13F358

Fortuny (F)

A chenille fabric with an effect similar to velvet. Due to its particular construction, dye and finish, it has a spectacular appearance and touch. This type of yarn is characterized by a high-volume structure created through a particular technique of twisting and shaving the surface. The result is an extraordinary three-dimensionality, softness and elegance that embellish the products of the Cassina collection.

Composition:
48% cotton
52% viscose

Martindale: 30.000
Pilling: 4
Color fastness: 4

BS-0
BS-1



Fortuny (F)

A chenille fabric with an effect similar to velvet. Due to its particular construction, dye and finish, it has a spectacular appearance and touch. This type of yarn is characterized by a high-volume structure created through a particular technique of twisting and shaving the surface. The result is an extraordinary three-dimensionality, softness and elegance that embellish the products of the Cassina collection.

Composition:
48% cotton
52% viscose

Martindale: 30.000
Pilling: 4
Color fastness: 4

BS-0
BS-1



Fortuny (F)

A chenille fabric with an effect similar to velvet. Due to its particular construction, dye and finish, it has a spectacular appearance and touch. This type of yarn is characterized by a high-volume structure created through a particular technique of twisting and shaving the surface. The result is an extraordinary three-dimensionality, softness and elegance that embellish the products of the Cassina collection.

Composition:
48% cotton
52% viscose

Martindale: 30.000
Pilling: 4
Color fastness: 4

BS-0
BS-1



Fortuny
13F737
AVORIO



Fortuny 13F736
BIANCO



Fortuny 13F738
BEIGE



Fortuny 13F739
MALVA



Fortuny 13F740
CARTA DA
ZUCCHERO



Fortuny 13F741
BLU NOTTE



Fortuny 13F742
VERDE BOSCO



Fortuny 13F743
VERDE MENTA



Fortuny 13F744
ROSA ANTICO



Fortuny 13F745
CEMENTO



Fortuny 13F746
ANTRACITE



Fortuny 13F747
VINACCIA

Francoforte (F)

Organic cotton and linen fibres are wisely mixed to create this 100% natural fabric. Soft and comforting to the touch it is slightly frosted to give further comfort.

Its three-dimensional structure with a micro-piqué effect makes it a light and fresh fabric that adapts to the entire Cassina Collection.

The lightness of the fabric is perfectly combined with a range of colours from warm and reassuring tones to the freshest and most delicate hues to further underline the elegance and refinement of each single product.

Composition:

63% cotton

37% linen

Martindale: 55.000

Pilling: 4

Color fastness: 4-5

BS-0



Francoforte (F)

Organic cotton and linen fibres are wisely mixed to create this 100% natural fabric. Soft and comforting to the touch it is slightly frosted to give further comfort.

Its three-dimensional structure with a micro-piqué effect makes it a light and fresh fabric that adapts to the entire Cassina Collection.

The lightness of the fabric is perfectly combined with a range of colours from warm and reassuring tones to the freshest and most delicate hues to further underline the elegance and refinement of each single product.

Composition:

63% cotton

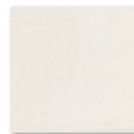
37% linen

Martindale: 55.000

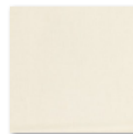
Pilling: 4

Color fastness: 4-5

BS-0



FRANCOFORTE
13F090
BIANCO



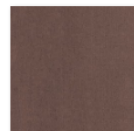
FRANCOFORTE
13F091
AVORIO



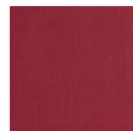
FRANCOFORTE
13F092
CENERE



FRANCOFORTE
13F093
BEIGE



FRANCOFORTE
13F095
NOCCIOLA



FRANCOFORTE
13F096
LAMPONE



FRANCOFORTE
13F097
BLU
NAVY



FRANCOFORTE
13F098
SMERALDO



FRANCOFORTE
13F099
PISTACCHIO



FRANCOFORTE
13F101
VERDE
ACIDO



FRANCOFORTE
13F102
ARGILLA



FRANCOFORTE
13F103
AZZURRO



FRANCOFORTE
13F104
CIELO



FRANCOFORTE
13F105
GRIGIO



FRANCOFORTE
13F106
FUMO



FRANCOFORTE
13F107
ANTRACITE

Marocco (F)

Modern and classic, thin and thicker yarns are blended together to create movement and three-dimensional effect. An extremely soft fabric, versatile and multi-purpose. A delicate balance of fresh and warm, tactile sensations.

Contrasts of threads in warp and weft offer shades differences for wavy texture, enlivened with patterns of relief, available in a broad and elegant colour palette. A versatile fabric to meet multiple needs in the interior design.

Composition:

43% acrylic

27% cotton

10% linen

10% polyester

10% viscose

Martindale: 26.000

Pilling: 4

Color fastness: 4-5



Marocco (F)

Modern and classic, thin and thicker yarns are blended together to create movement and three-dimensional effect. An extremely soft fabric, versatile and multi-purpose. A delicate balance of fresh and warm, tactile sensations.

Contrasts of threads in warp and weft offer shades differences for wavy texture, enlivened with patterns of relief, available in a broad and elegant colour palette. A versatile fabric to meet multiple needs in the interior design.

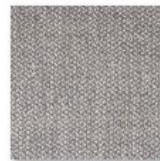
Composition:

43% acrylic
27% cotton
10% linen
10% polyester
10% viscose

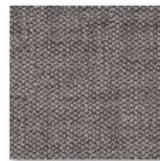
Martindale: 26.000

Pilling: 4

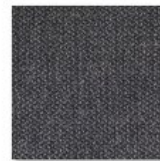
Color fastness: 4-5



Marocco
13f753



Marocco
13f754



Marocco
13f755



Marocco
13f780



Marocco
13f781



Marocco
13f782



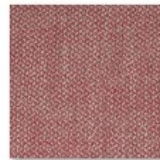
Marocco
13f783



Marocco
13f784



Marocco
13f785



Marocco
13f786

Tensing (F)

A three-dimensional yarn-dyed, full-bodied and structured fabric. Its simple construction ensures a rich appearance and a soft and comfortable hand. Built with fancy composite yarns, it has a good resistance to abrasion in domestic use and a wide application on the Cassina product range.

The wide range of colors enhances and underlines Cassina's constructive mastery. The chromatic differences that are found between the products are to be considered normal and to be evaluated with the usual tolerances of yarn-dyed fabrics.

Composition:
36% cotton
32% acrylic
24% viscose
8% polyester

Martindale: 30.000
Color fastness: 4-5



Tensing (F)

A three-dimensional yarn-dyed, full-bodied and structured fabric. Its simple construction ensures a rich appearance and a soft and comfortable hand. Built with fancy composite yarns, it has a good resistance to abrasion in domestic use and a wide application on the Cassina product range.

The wide range of colors enhances and underlines Cassina's constructive mastery. The chromatic differences that are found between the products are to be considered normal and to be evaluated with the usual tolerances of yarn-dyed fabrics.

Composition:

36% cotton

32% acrylic

24% viscose

8% polyester

Martindale: 30.000

Color fastness: 4-5



Tensing 13F323
PERLA



Tensing 13F324
CHAMPAGNE



Tensing 13F325
VINACCIA



Tensing 13F326
TITANIO



Tensing 13F327
AZZURRO



Tensing 13F328
BLU NAVY



Tensing 13F437
CAFFE'



Tensing 13F438
CORALLO



Tensing 13F439
NERO



Tensing 13F457
BIANCO



Tensing 13F458
NOCCIOLA



Tensing 13F459
ACCIAIO

Lincoln (F)

A 100% natural wool cloth with a particularly soft texture.

This fabric has excellent properties such as extreme comfort on the one hand, thanks to its softness and suitability for both cold and warm climates, and, on the other, excellent technical performance including resistance to abrasion and high elasticity, thus guaranteeing extraordinary adaptability to multiple products in the Cassina Collection.

Note: The possible impurities are part of a natural process of wool and therefore denote its total naturalness.

Composition:
100% wool

Martindale: 30.000
Color fastness: 4-5

BS5852 - 0
BS-1



Licoln (F)

A 100% natural wool cloth with a particularly soft texture.

This fabric has excellent properties such as extreme comfort on the one hand, thanks to its softness and suitability for both cold and warm climates, and, on the other, excellent technical performance including resistance to abrasion and high elasticity, thus guaranteeing extraordinary adaptability to multiple products in the Cassina Collection.

Note: The possible impurities are part of a natural process of wool and therefore denote its total naturalness.

Composition:
100% wool

Martindale: 30.000
Color fastness: 4-5

BS5852 - 0
BS-1



 LINCOLN 13L570 AVORIO	 LINCOLN 13L571 CENERE	 LINCOLN 13L572 SABBIA	 LINCOLN 13L573 TABACCO	 LINCOLN 13L574 ZAFFERANO
 LINCOLN 13L575 RUGGINE	 LINCOLN 13L576 VINACCIA	 LINCOLN 13L577 GERANEO	 LINCOLN 13L578 LAMPONE	 LINCOLN 13L579 POMODORO
 LINCOLN 13L580 FUXIA	 LINCOLN 13L581 CEMENTO	 LINCOLN 13L582 PIETRA	 LINCOLN 13L583 PETROLIO	 LINCOLN 13L584 OLIVA
 LINCOLN 13L585 BLU COBALTO	 LINCOLN 13L586 BLU VIOLETTE	 LINCOLN 13L587 BLU NOTTE	 LINCOLN 13L588 ANTRACITE	 LINCOLN 13L589 NERO

Linus (L)

A fabric that brings hand-woven straw mats to mind. Its cleverly blended composition is 93% plant fibers to create a natural appearance, while its smooth, variegated surface makes it pleasing to the eye and the touch. Industrial processing has made it a tough fabric, with the binding on the reverse side giving it formidable durability. The combination of craftsmanship and industrial processing produce a very natural and robust article.

Composition:

51% viscose

21% linen

21% cotton

4% acrylic

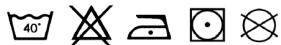
2% polyester

1% other fibres

Martindale: 20.000

Pilling: 3-4

Color fastness: 4-5



Linus (L)

A fabric that brings hand-woven straw mats to mind. Its cleverly blended composition is 93% plant fibers to create a natural appearance, while its smooth, variegated surface makes it pleasing to the eye and the touch. Industrial processing has made it a tough fabric, with the binding on the reverse side giving it formidable durability. The combination of craftsmanship and industrial processing produce a very natural and robust article.

Composition:

51% viscose

21% linen

21% cotton

4% acrylic

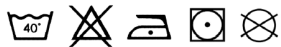
2% polyester

1% other fibres

Martindale: 20.000

Pilling: 3-4

Color fastness: 4-5



Linus (L)

A fabric that brings hand-woven straw mats to mind. Its cleverly blended composition is 93% plant fibers to create a natural appearance, while its smooth, variegated surface makes it pleasing to the eye and the touch. Industrial processing has made it a tough fabric, with the binding on the reverse side giving it formidable durability. The combination of craftsmanship and industrial processing produce a very natural and robust article.

Composition:

51% viscose

21% linen

21% cotton

4% acrylic

2% polyester

1% other fibres

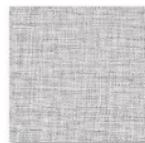
Martindale: 20.000

Pilling: 3-4

Color fastness: 4-5



LINUS 13L281
BIANCO



LINUS 13L282
AVORIO



LINUS 13L283
CENERE



LINUS 13L284
ALLUMINIO



LINUS 13L285
PAGLIA



LINUS 13L286
TORTORA



LINUS 13L287
CAFFE



LINUS 13L288
CARBONE



LINUS 13L289
ANTRACITE



LINUS 13L292
OCEANO



LINUS 13L293
OLIVA



LINUS 13L294
OCRA



LINUS 13L300
VINACCIA



LINUS 13L301
SMERALDO



LINUS 13L302
BLU NOTTE



LINUS 13L303
PETROLIO

Lipari (L)

Lipari is a linen coming from long-stable fibers, the highest quality obtainable from this ancient and extremely eco-sustainable plant, which is inserted transversally on the Cassina Collection, giving discreet preciousness to the products. The high quality and its high weight allow to obtain a fabric of discreet preciousness, a yarn that is pleasant to the touch and natural in appearance.

The type of processing and finishing similar to wool yarns allow to obtain high softness, reduce wrinkles and ensure superior resistance versus many other types of fabric.

Composition:

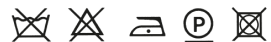
90% linen

10% nylon

Martindale: 80.000

Color fastness: 5

Pilling: 3-4



80 / Cassina Production & Materials



Lipari (L)

Lipari is a linen coming from long-stable fibers, the highest quality obtainable from this ancient and extremely eco-sustainable plant, which is inserted transversally on the Cassina Collection, giving discreet preciousness to the products. The high quality and its high weight allow to obtain a fabric of discreet preciousness, a yarn that is pleasant to the touch and natural in appearance.

The type of processing and finishing similar to wool yarns allow to obtain high softness, reduce wrinkles and ensure superior resistance versus many other types of fabric.

Composition:

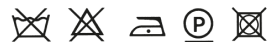
90% linen

10% nylon

Martindale: 80.000

Color fastness: 5

Pilling: 3-4



Lipari (L)

Lipari is a linen coming from long-stable fibers, the highest quality obtainable from this ancient and extremely eco-sustainable plant, which is inserted transversally on the Cassina Collection, giving discreet preciousness to the products. The high quality and its high weight allow to obtain a fabric of discreet preciousness, a yarn that is pleasant to the touch and natural in appearance.

The type of processing and finishing similar to wool yarns allow to obtain high softness, reduce wrinkles and ensure superior resistance versus many other types of fabric.

Composition:

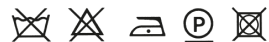
90% linen

10% nylon

Martindale: 80.000

Color fastness: 5

Pilling: 3-4



LIPARI 13L630
PANNA



LIPARI 13L631
CENERE



LIPARI 13L632
CREMA



LIPARI 13L633
CANAPA



LIPARI 13L634
TARTUFO



LIPARI 13L635
GRIGIO



LIPARI 13L636
TITANIO



LIPARI 13L637
ANTRACITE



LIPARI 13L638
SMERALDO



LIPARI 13L639
BLU



LIPARI 13L640
JEANS



LIPARI 13L641
VINACCIA



LIPARI 13L642
RUGGINE



LIPARI 13L643
CANNELLA

Look (L)

This is a very rich bouclé fabric, characterised by a grainy, three-dimensional yarn sprinkled with rings and knots that create a sensation of softness and warmth to the touch, just like a comfortable warm blanket during a harsh winter. In addition to its aesthetic and tactile richness, this fabric guarantees excellent technical performance such as resistance to abrasion and the formation of “pills”.

Composition:

34% viscose

33% acrylic

17% wool

8% Polyester

4% linen

4% cotton

Martindale: 50.000

Pilling: 4

Color fastness: 5

BS-0

BS-1

TB117



Look (L)

This is a very rich bouclé fabric, characterised by a grainy, three-dimensional yarn sprinkled with rings and knots that create a sensation of softness and warmth to the touch, just like a comfortable warm blanket during a harsh winter. In addition to its aesthetic and tactile richness, this fabric guarantees excellent technical performance such as resistance to abrasion and the formation of “pills”.

Composition:

34% viscose

33% acrylic

17% wool

8% Polyester

4% linen

4% cotton

Martindale: 50.000

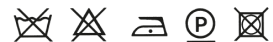
Pilling: 4

Color fastness: 5

BS-0

BS-1

TB117



Look (L)

This is a very rich bouclé fabric, characterised by a grainy, three-dimensional yarn sprinkled with rings and knots that create a sensation of softness and warmth to the touch, just like a comfortable warm blanket during a harsh winter. In addition to its aesthetic and tactile richness, this fabric guarantees excellent technical performance such as resistance to abrasion and the formation of “pills”.

Composition:

34% viscose

33% acrylic

17% wool

8% Polyester

4% linen

4% cotton

Martindale: 50.000

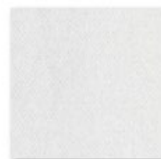
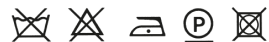
Pilling: 4

Color fastness: 5

BS-0

BS-1

TB117



LOOK 13L010
BIANCO



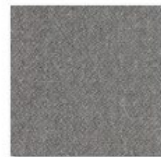
LOOK 13L011
CORDA



LOOK 13L012
CEMENTO



LOOK 13L013
PIETRA



LOOK 13L014
ANTRACITE



LOOK 13L015
CIELO



LOOK 13L016
MENTA



LOOK 13L017
SENAPE



LOOK 13L018
CAMEO



LOOK 13L019
OTTAVIO



LOOK 13L020
VINACCIA



LOOK 13L021
NOTTE

Ortigia (L)

A compact velvet, 100% cotton, short and dense with a homogeneous and deep color thanks to the piece dye.

Extremely resistant, it has high technical and structural performance, it keeps its precious appearance unchanged over time. Smooth and luxurious, it transmits wealth and enhances the Cassina products and can be easily used on a vast range of products.

To guarantee an optimal fabric yield and its perfect application, on some models the sewing will be modified, without altering the final appearance of the product.

Composition:
100% cotton

Martindale: 50.000
Color fastness: 4-6



Ortigia (L)

A compact velvet, 100% cotton, short and dense with a homogeneous and deep color thanks to the piece dye.

Extremely resistant, it has high technical and structural performance, it keeps its precious appearance unchanged over time. Smooth and luxurious, it transmits wealth and enhances the Cassina products and can be easily used on a vast range of products.

To guarantee an optimal fabric yield and its perfect application, on some models the sewing will be modified, without altering the final appearance of the product.

Composition:
100% cotton

Martindale: 50.000
Color fastness: 4-6



Ortigia (L)

A compact velvet, 100% cotton, short and dense with a homogeneous and deep color thanks to the piece dye.

Extremely resistant, it has high technical and structural performance, it keeps its precious appearance unchanged over time. Smooth and luxurious, it transmits wealth and enhances the Cassina products and can be easily used on a vast range of products.

To guarantee an optimal fabric yield and its perfect application, on some models the sewing will be modified, without altering the final appearance of the product.

Composition:
100% cotton

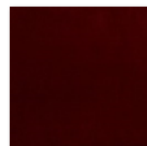
Martindale: 50.000
Color fastness: 4-6



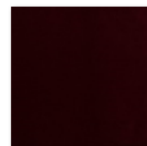
Ortigia 13L650
ROCCIA



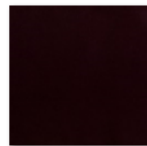
Ortigia 13L651
CENERE



Ortigia 13L652
CAYENNE



Ortigia 13L653
VINO



Ortigia 13L654
PRUGNA



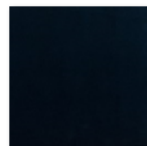
Ortigia 13L655
ARGENTO



Ortigia 13L656
CACTUS



Ortigia 13L657
ANTRACITE



Ortigia 13L658
BLU NOTTE



Ortigia 13L659
INDIGO



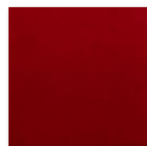
Ortigia 13L660
OCEAN



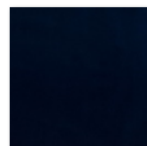
Ortigia 13L661
LAGO



Ortigia 13L662
AMANDE



Ortigia 13L663
OPERA



Ortigia 13L664
PRUSSIA

Luxor (L)

A fabric with a refined texture and sophisticated weave. Luxor stands out for its uniqueness and exceptional softness. This distinctive fabric, available in a select range of colours designed to add a touch of class, is born from a complex jacquard construction, with a linen warp and chenille blend yarn, defining its noble soul.

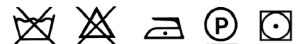
Composition:

55% viscose
25% cotton
10% linen
7% polyester
3% acrylic

Martindale: 40.000

Pilling: 4-5

Color fastness: 5-6



Luxor (L)

A fabric with a refined texture and sophisticated weave. Luxor stands out for its uniqueness and exceptional softness. This distinctive fabric, available in a select range of colours designed to add a touch of class, is born from a complex jacquard construction, with a linen warp and chenille blend yarn, defining its noble soul.

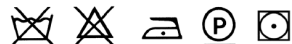
Composition:

55% viscose
25% cotton
10% linen
7% polyester
3% acrylic

Martindale: 40.000

Pilling: 4-5

Color fastness: 5-6



LUXOR 13L022
BIANCO



LUXOR 13L023
PERLA



LUXOR 13L024
BEIGE



LUXOR 13L025
FUCILE



LUXOR 13L026
ROSA ANTICO



LUXOR 13L027
SENAPE



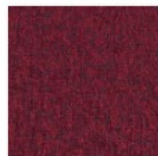
LUXOR 13L028
BOSCO



LUXOR 13L029
SMERALDO



LUXOR 13L030
RUGGINE



LUXOR 13L032
PORPORA



LUXOR 13L033
CARBONE



LUXOR 13L035
BLU CINA

Unimelange (O)

A fabric it's easy to get along with... smooth, giving, it adapts, without resistance, to all complex upholstery designs, moulding perfectly with the shapes and angles.

Being a stretch fabric means seams can be reduced to a minimum. A fabric with a high technological content, very compact and highly resistant: plus, it comes in wide range of colours, taking into account the needs of both classic and modern styles.

Composition:

36% cotton

32% acrylic

24% viscose

8% polyester

Martindale: 80.000

Color fastness: 6

Pilling: 4



Unimelange (O)

A fabric it's easy to get along with... smooth, giving, it adapts, without resistance, to all complex upholstery designs, moulding perfectly with the shapes and angles.

Being a stretch fabric means seams can be reduced to a minimum. A fabric with a high technological content, very compact and highly resistant: plus, it comes in wide range of colours, taking into account the needs of both classic and modern styles.

Composition:

36% cotton

32% acrylic

24% viscose

8% polyester

Martindale: 80.000

Color fastness: 6

Pilling: 4



Otterlo (O)

This velvet is particular as it is produced on a circular jersey machine: the workmanship gives the fabric a natural elasticity and consequently an exceptional adherence even on curved surfaces, allowing ample application to all of the products in the Cassina Collection. In addition, this type of process makes it an exceptionally resistant fabric that maintains all the pleasantness of velvet to the touch thanks to its high percentage of wool which makes it extremely natural.

Composition:

60% wool

20% polyester

20% nylon

Martindale: 90.000

Color fastness: 6-7

Pilling: 4-5

BS-0

BS-1



Otterlo (O)

This velvet is particular as it is produced on a circular jersey machine: the workmanship gives the fabric a natural elasticity and consequently an exceptional adherence even on curved surfaces, allowing ample application to all of the products in the Cassina Collection. In addition, this type of process makes it an exceptionally resistant fabric that maintains all the pleasantness of velvet to the touch thanks to its high percentage of wool which makes it extremely natural.

Composition:
60% wool
20% polyester
20% nylon

Martindale: 90.000
Color fastness: 6-7
Pilling: 4-5

BS-0
BS-1



OTTERLO
130050
PETROLIO



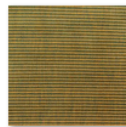
OTTERLO
130055
PRUSSIA



OTTERLO
130059 BLU



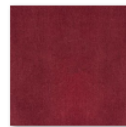
OTTERLO
130061
STRIPES
CENERA



OTTERLO
130062
STRIPES
PETROLIO



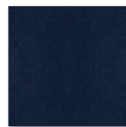
OTTERLO
130051
CANARINO



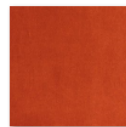
OTTERLO
130052
VINACCIA



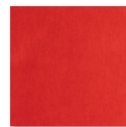
OTTERLO
130053 ROSA



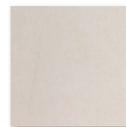
OTTERLO
130054 BLU
NOTTE



OTTERLO
130056
RUGGINE



OTTERLO
130057
CARDINALE



OTTERLO
130058
CENERA



OTTERLO
STRIPES
130063 ROSA

Samsara (S)

Three fabrics, previously included in the Everest and Panorama proposals, are now offered with an expanded color range. Designed by Raf Simons and made exclusively for Kvadrat, they present remarkable aesthetic and distinctive content. Made of a high percentage of wool, they are perfect for offering a warm image and for covering mainly armchairs and accessories, offering good resistance for a predominantly residential use.

Composition:
82% wool
10% polyester
8% nylon

Martindale: 70.000
Color fastness: 7
Pilling: 4



Samsara (S)

Three fabrics, previously included in the Everest and Panorama proposals, are now offered with an expanded color range. Designed by Raf Simons and made exclusively for Kvadrat, they present remarkable aesthetic and distinctive content. Made of a high percentage of wool, they are perfect for offering a warm image and for covering mainly armchairs and accessories, offering good resistance for a predominantly residential use.

Composition:

82% wool

10% polyester

8% nylon

Martindale: 70.000

Color fastness: 7

Pilling: 4

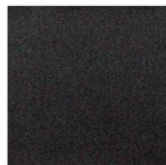


Samsara (S)

Three fabrics, previously included in the Everest and Panorama proposals, are now offered with an expanded color range. Designed by Raf Simons and made exclusively for Kvadrat, they present remarkable aesthetic and distinctive content. Made of a high percentage of wool, they are perfect for offering a warm image and for covering mainly armchairs and accessories, offering good resistance for a predominantly residential use.

Composition:
82% wool
10% polyester
8% nylon

Martindale: 70.000
Color fastness: 7
Pilling: 4



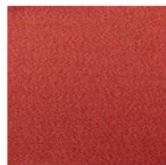
SAMSARA
MASAI 13S021
NERO



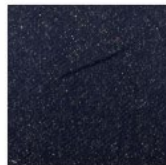
SAMSARA
MASAI 13S022
BLU ELETTRICO



SAMSARA
MASAI 13S023
VERDE
SMERALDO



SAMSARA
MASAI 13S024
ROSSOBLU



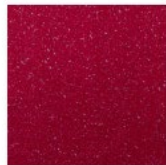
SAMSARA PILOT
13S001 NOTTE



SAMSARA PILOT
13S002 BLU



SAMSARA PILOT
13S003 VERDE
BOSCO



SAMSARA PILOT
13S004 VINO



SAMSARA
SONAR 13S041
CARTA DA
ZUCCHERO



SAMSARA
SONAR 13S042
BIANCO TALPA



SAMSARA
SONAR 13S043
SMERALDO



SAMSARA
SONAR 13S044
NOCCIOLA

Outdoor fabrics

Cat. E

[Elba](#) **NEW**

[Egadi](#)

Cat. F

[Fiji](#) **NEW**

[Favignana](#)

[Filicudi](#)

[Futura](#)

Cat. L

[Kemi](#)

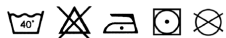


Elba (E)

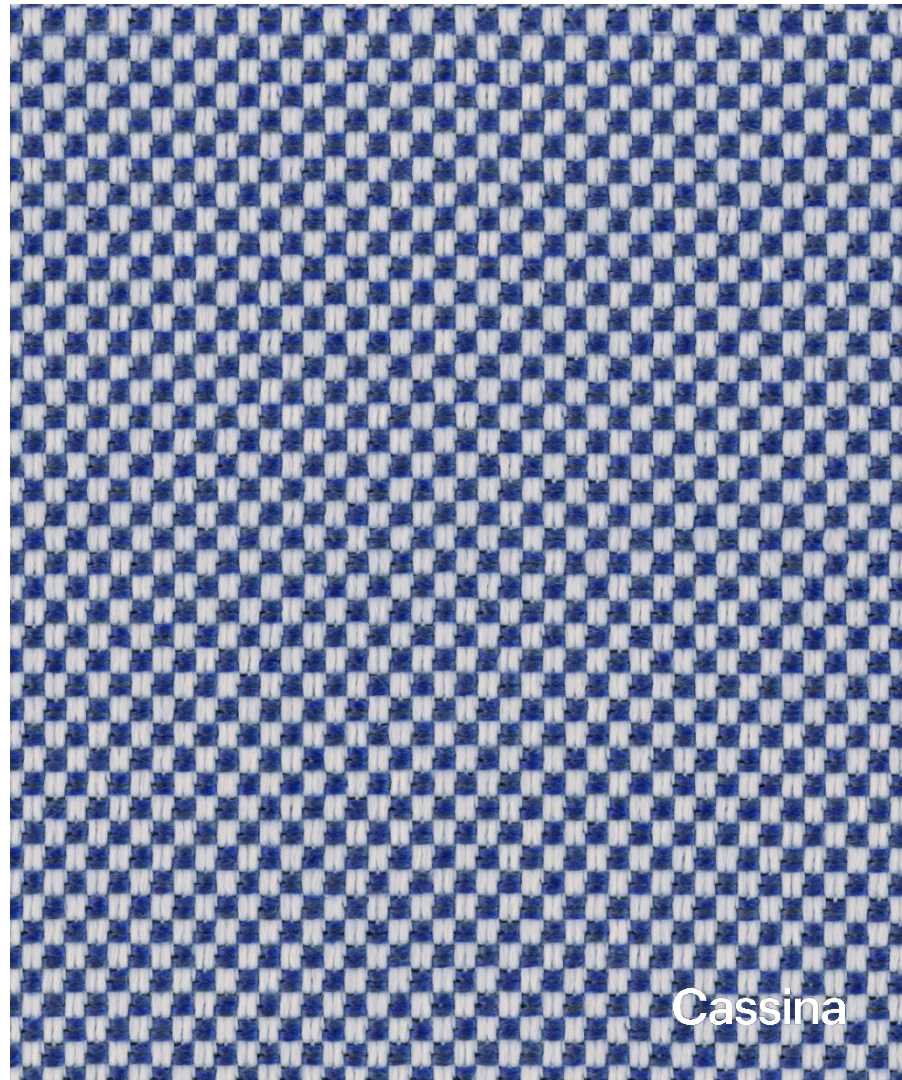
Elba's characteristic qualities make it perfect for any environment; a ductile fabric, for both indoors and outdoors, it has a warm, soft and extremely modern look. The Panama construction with polypropylene yarn warp and weft guarantees top-level performance, making it an innovative and flexible fabric notable for its excellent resistance to abrasion, pilling, exposure to light and weathering. It is also an environmentally friendly fabric, not only for its recyclable yarns, but also for its ecological production process which reduces waste.

Composition:
100% polypropylene

Martindale: 35.000
Pilling: 4-5
Color fastness: 7-8



Indoor/
outdoor

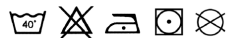


Elba (E)

Elba's characteristic qualities make it perfect for any environment; a ductile fabric, for both indoors and outdoors, it has a warm, soft and extremely modern look. The Panama construction with polypropylene yarn warp and weft guarantees top-level performance, making it an innovative and flexible fabric notable for its excellent resistance to abrasion, pilling, exposure to light and weathering. It is also an environmentally friendly fabric, not only for its recyclable yarns, but also for its ecological production process which reduces waste.

Composition:
100% polypropylene

Martindale: 35.000
Pilling: 4-5
Color fastness: 7-8



Egadi (E)

The continuous research and focus on innovation today translates into increasingly environmentally-friendly and high-performance yarns. For its new collection of Outdoor fabrics, Cassina has chosen a high-tech and versatile fibre that is ultra-resistant both to light and to weathering while maintaining a very soft texture. Polypropylene is environmentally-friendly (no solvents or acids are used), has low environmental impact (reduction in water and energy consumption) and is completely recyclable. It is also stainproof, water-repellent, hypoallergenic and odour-resistant. It is resistant to humidity and, thanks to its very light specific weight, is the only yarn that floats. This high-performance yarn combined with Cassina's ability to develop innovative spaces has produced Egadi, a fabric with a robust and refined weave that creates a striking and attractive optical effect. Highly resistant and solid, it is produced using the same weaving system as the famous Panama hat with double the number of weft and warp yarns. Cassina has a complete colour portfolio that ranges from natural tones to dark shades and highlights, echoing the colours of this Sicilian island.

Composition:
100% polypropylene
Martindale: 50000
Pilling: 5
Color fastness: 7



10 / Cassina Production & Materials

Fiji (F)

Pure naturalness and a triumph of colours: Fiji is an acrylic outdoor fabric that is solution-dyed to make it colourful in all its parts. Fiji has a number of notable qualities: it has an excellent resistance to light, the yarn is water- and oil-repellent, it acts as a barrier to water, it is highly resistant to abrasions and does not discolour.

Its performance levels and highly technical qualities do not sacrifice the particularly soft touch of the weave, thanks to its precise finishing process and the use of a very light water typical of the Biella area in Italy where it is produced.

Composition:
100% acrylic solution dyed fibre

Martindale: 40.000
Pilling: 3-4
Color fastness: 7-8



Fiji (F)

Pure naturalness and a triumph of colours: Fiji is an acrylic outdoor fabric that is solution-dyed to make it colourful in all its parts. Fiji has a number of notable qualities: it has an excellent resistance to light, the yarn is water- and oil-repellent, it acts as a barrier to water, it is highly resistant to abrasions and does not discolour.

Its performance levels and highly technical qualities do not sacrifice the particularly soft touch of the weave, thanks to its precise finishing process and the use of a very light water typical of the Biella area in Italy where it is produced.

Composition:

100% acrylic solution dyed fibre

Martindale: 40.000

Pilling: 3-4

Color fastness: 7-8



Fiji (F)

Pure naturalness and a triumph of colours: Fiji is an acrylic outdoor fabric that is solution-dyed to make it colourful in all its parts. Fiji has a number of notable qualities: it has an excellent resistance to light, the yarn is water- and oil-repellent, it acts as a barrier to water, it is highly resistant to abrasions and does not discolour.

Its performance levels and highly technical qualities do not sacrifice the particularly soft touch of the weave, thanks to its precise finishing process and the use of a very light water typical of the Biella area in Italy where it is produced.

Composition:
100% acrylic solution dyed fibre

Martindale: 40.000

Pilling: 3-4

Color fastness: 7-8



Fiji 13F063
perla



Fiji 13F064
bianco



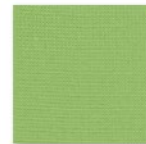
Fiji 13F108
grigio



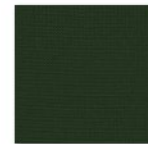
Fiji 13F109
tortora



Fiji 13F110
antracite



Fiji 13F192
verde acido



Fiji 13F193
verde bosco



Fiji 13F194
limone



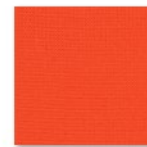
Fiji 13F196
cielo



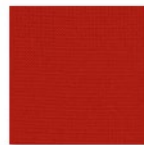
Fiji 13F229
turchese



Fiji 13F231 blu
oceano



Fiji 13F232
mandarino



Fiji 13F238
lampone



Fiji 13F250
pomodoro

Favignana (F)

The continuous research and focus on innovation today translates into increasingly environmentally-friendly and high-performance yarns. For its collection of Outdoor fabrics, Cassina has chosen a high-tech and versatile fibre that is ultra-resistant both to light and to weathering while maintaining a very soft texture. This high-performance yarn combined with Cassina's ability to develop innovative spaces has produced Favignana, a series of jacquard fabrics that stand out for their elaborate and colourful designs. Employing the Gobelins technique which imitates the ancient handmade tapestries, Favignana features floral and geometric patterns that allow for multiple effects and embellish the models of the Cassina Outdoor collection, adding to their exclusivity. (The FIORE variants are 100% solution-dyed acrylic for outdoor use)

Fiore composition:
100% Acrylic

Zaire/Scacco composition:
55% Acrylic
45% Polypropilen
Martindale: 25.000
Pilling: 4
Color fastness: 7



10 / Cassina Production & Materials

9



Cassina

Favignana (F)

The continuous research and focus on innovation today translates into increasingly environmentally-friendly and high-performance yarns. For its collection of Outdoor fabrics, Cassina has chosen a high-tech and versatile fibre that is ultra-resistant both to light and to weathering while maintaining a very soft texture. This high-performance yarn combined with Cassina's ability to develop innovative spaces has produced Favignana, a series of jacquard fabrics that stand out for their elaborate and colourful designs. Employing the Gobelins technique which imitates the ancient handmade tapestries, Favignana features floral and geometric patterns that allow for multiple effects and embellish the models of the Cassina Outdoor collection, adding to their exclusivity. (The FIORE variants are 100% solution-dyed acrylic for outdoor use)

Fiore composition:
100% Acrylic

Zaire/Scacco composition:
55% Acrylic
45% Polypropilen
Martindale: 25.000
Pilling: 4
Color fastness: 7



Favignana (F)

The continuous research and focus on innovation today translates into increasingly environmentally-friendly and high-performance yarns. For its collection of Outdoor fabrics, Cassina has chosen a high-tech and versatile fibre that is ultra-resistant both to light and to weathering while maintaining a very soft texture. This high-performance yarn combined with Cassina's ability to develop innovative spaces has produced Favignana, a series of jacquard fabrics that stand out for their elaborate and colourful designs. Employing the Gobelins technique which imitates the ancient handmade tapestries, Favignana features floral and geometric patterns that allow for multiple effects and embellish the models of the Cassina Outdoor collection, adding to their exclusivity. (The FIORE variants are 100% solution-dyed acrylic for outdoor use)

Fiore composition:
100% Acrylic

Zaire/Scacco composition:
55% Acrylic
45% Polypropilen
Martindale: 25.000
Pilling: 4
Color fastness: 7



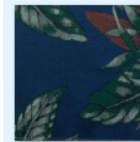
FAVIGNANA
13F050 FIORE
GRIGIO



FAVIGNANA
13F051 FIORE
ROSSO



FAVIGNANA
13F052 FIORE
VERDE



FAVIGNANA
13F053 FIORE
BLU



FAVIGNANA
13F054 ZAIRE
GRIGIO



FAVIGNANA
13F055 ZAIRE
BLU



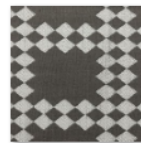
FAVIGNANA
13F056 ZAIRE
VERDE



FAVIGNANA
13F057 ZAIRE
ROSSO



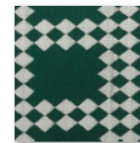
FAVIGNANA
13F058
SCACCO
GRIGIO



FAVIGNANA
13F059
SCACCO
GRIGIO SCURO



FAVIGNANA
13F060
SCACCO BLU



FAVIGNANA
13F061
SCACCO
VERDE



FAVIGNANA
13F062
SCACCO

Filicudi (F)

For its new collection of Outdoor fabrics, Cassina has chosen a high-tech and versatile fibre that is ultra-resistant both to light and to weathering while maintaining a very soft texture. Polypropylene is environmentally-friendly (no solvents or acids are used), has low environmental impact (reduction in water and energy consumption) and is completely recyclable. It is also stainproof, water-repellent, hypoallergenic and odour-resistant. It is resistant to humidity and, thanks to its very light specific weight, is the only yarn that floats. This high-performance yarn combined with Cassina's ability to develop innovative spaces has produced Filicudi, a 3D fabric with fancy yarn and a characteristic bouclé effect that celebrates its sensory richness with distinguishing features like its multiple knots and little eyelets. The series of different coloured yarns creates a *mélange* effect: a highly evocative interplay of colours which recall those of the Mediterranean maquis shrubland that covers the island.

Composition:

88% Polypropylene

12% Polyester

Martindale: 30.000

Pilling: 4

Color fastness: 7-8



112 / Cassina Production & Materials



Cassina

Filicudi (F)

For its new collection of Outdoor fabrics, Cassina has chosen a high-tech and versatile fibre that is ultra-resistant both to light and to weathering while maintaining a very soft texture. Polypropylene is environmentally-friendly (no solvents or acids are used), has low environmental impact (reduction in water and energy consumption) and is completely recyclable. It is also stainproof, water-repellent, hypoallergenic and odour-resistant. It is resistant to humidity and, thanks to its very light specific weight, is the only yarn that floats. This high-performance yarn combined with Cassina's ability to develop innovative spaces has produced Filicudi, a 3D fabric with fancy yarn and a characteristic bouclé effect that celebrates its sensory richness with distinguishing features like its multiple knots and little eyelets. The series of different coloured yarns creates a mélange effect: a highly evocative interplay of colours which recall those of the Mediterranean maquis shrubland that covers the island.

Composition:

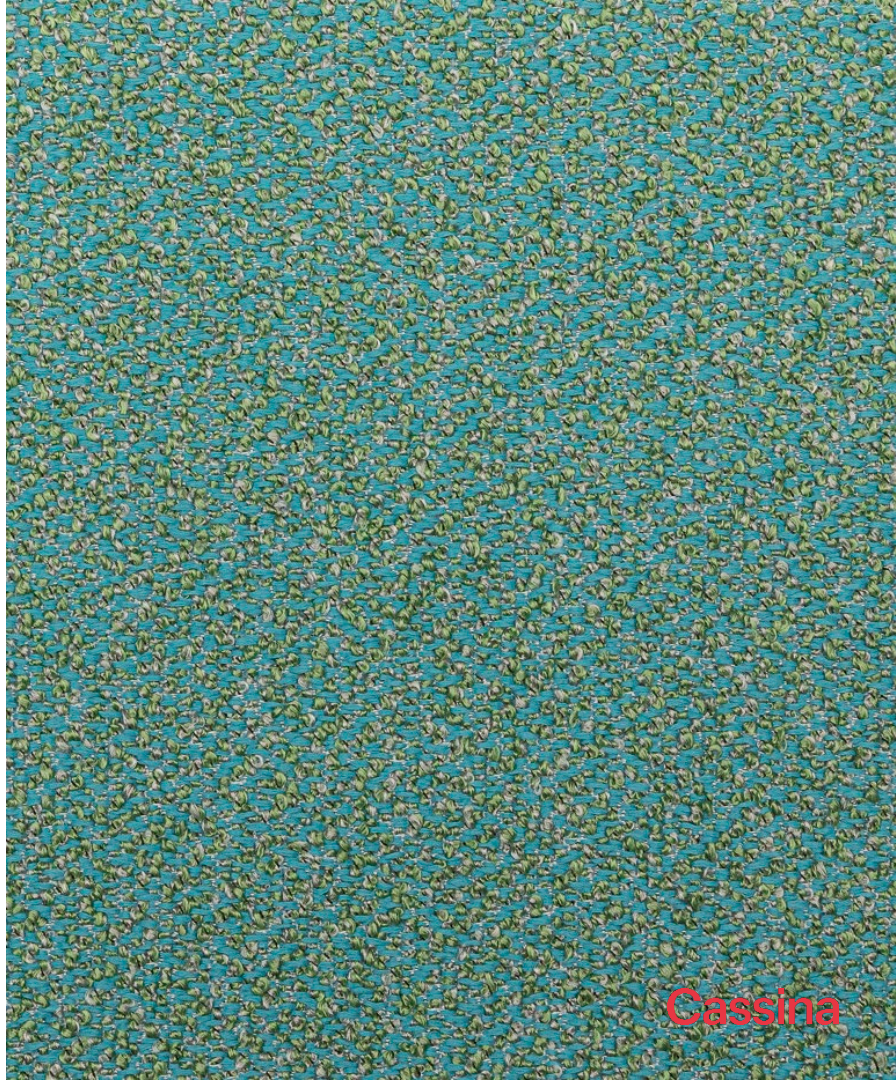
88% Polypropylene

12% Polyester

Martindale: 30.000

Pilling: 4

Color fastness: 7-8



Filicudi (F)

For its new collection of Outdoor fabrics, Cassina has chosen a high-tech and versatile fibre that is ultra-resistant both to light and to weathering while maintaining a very soft texture. Polypropylene is environmentally-friendly (no solvents or acids are used), has low environmental impact (reduction in water and energy consumption) and is completely recyclable. It is also stainproof, water-repellent, hypoallergenic and odour-resistant. It is resistant to humidity and, thanks to its very light specific weight, is the only yarn that floats. This high-performance yarn combined with Cassina's ability to develop innovative spaces has produced Filicudi, a 3D fabric with fancy yarn and a characteristic bouclé effect that celebrates its sensory richness with distinguishing features like its multiple knots and little eyelets. The series of different coloured yarns creates a *mélange* effect: a highly evocative interplay of colours which recall those of the Mediterranean maquis shrubland that covers the island.

Composition:

88% Polypropylene
12% Polyester

Martindale: 30.000

Pilling: 4

Color fastness: 7-8



FILICUDI
13F032
BIANCO



FILICUDI
13F033 SILICIO



FILICUDI
13F034 SABBIA



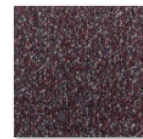
FILICUDI
13F035
TITANIO



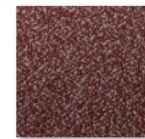
FILICUDI
13F036 BOSCO



FILICUDI
13F037
MUSCHIO



FILICUDI
13F038
CORIANDOLO



FILICUDI
13F039 MOSTO



FILICUDI
13F040
VINACCIA



FILICUDI
13F041
CORALLO



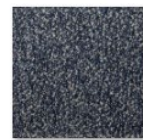
FILICUDI
13F043 CORDA



FILICUDI
13F044
LAGUNA



FILICUDI
13F045 PANNA



FILICUDI
13F046
LEVANTO



FILICUDI
13F048
CARAIBI



FILICUDI
13F049
OCEANO

Futura (F)

Futura is a fabric made from plastic that respects the environment. A 100% polyester yarn recycled from PET, it is the result of a process entirely made in Italy with a low environmental impact. Hypoallergenic thanks to the yarn that has been dyed with non-toxic colourants, this fabric is not only innovative but also of excellent quality and recyclable. It represents an alternative choice that is sensitive to the future of the planet.

REVIVAZ for **Cassina**

Composition:

100% Recycled PET

Martindale: 100.000

Pilling: 4-5

Color fastness: 7

BS-0,

BS-1,

TB 117 CAL



Futura (F)

Futura is a fabric made from plastic that respects the environment. A 100% polyester yarn recycled from PET, it is the result of a process entirely made in Italy with a low environmental impact. Hypoallergenic thanks to the yarn that has been dyed with non-toxic colourants, this fabric is not only innovative but also of excellent quality and recyclable. It represents an alternative choice that is sensitive to the future of the planet.

REVIV[®] for **Cassina**

Composition:

100% Recycled PET

Martindale: 100.000

Pilling: 4-5

Color fastness: 7

BS-0,

BS-1,

TB 117 CAL



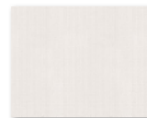
Futura (F)

Futura is a fabric made from plastic that respects the environment. A 100% polyester yarn recycled from PET, it is the result of a process entirely made in Italy with a low environmental impact. Hypoallergenic thanks to the yarn that has been dyed with non-toxic colourants, this fabric is not only innovative but also of excellent quality and recyclable. It represents an alternative choice that is sensitive to the future of the planet.

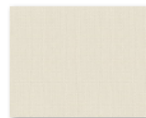
REVIVIA for **Cassina**

Composition:
100% Recycled PET

Martindale: 100.000
Pilling: 4-5
Color fastness: 7
BS-0,
BS-1,
TB 117 CAL



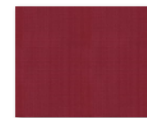
Futura 13F150
BIANCO



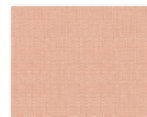
Futura 13F151
BIANCO LINO



Futura 13F152
BIANCO
BORDEAUX



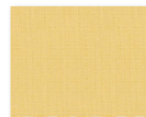
Futura 13F153
BORDEAUX



Futura 13F154
BIANCO
BRUCIATO



Futura 13F155
BRUCIATO



Futura 13F156
BIANCO
GIALLO



Futura 13F157
GIALLO



Futura 13F158
BIANCO
MUSCHIO



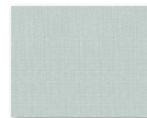
Futura 13F159
MUSCHIO



Futura 13F166
BIANCO
OTTANIO



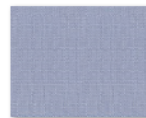
Futura 13F167
OTTANIO



Futura 13F168
BIANCO



Futura 13F169
ACQUA



Futura 13F170
BIANCO
CLASSIC BLUE



Futura 13F171
CLASSIC BLUE