

# Fauteuil Direction

Jean Prouvé, 1951

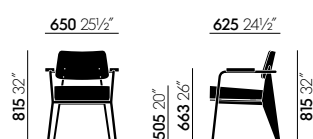


Fauteuil Direction is a comfortable armchair especially suited for table seating. Its design exemplifies the constructive aesthetic for which Prouvé is so well known. The compact armchair is ideal for the home office – where it is particularly striking in combination with the Compas Direction desk – and as a comfortable dining chair. Outside the home, Fauteuil Direction cuts a fine figure in elegantly appointed lobbies, restaurants or waiting areas.

## Materials

- **Seat and backrest:** polyurethane filling; cover in fabric or leather.
- **Seat height:** 505 mm (445 mm with applied load, measured in accordance with EN 1335-1:2000).
- **Armrests:** solid wood in natural oak with oiled finish, dark stained oak with protective natural lacquer finish, or American walnut with oiled finish.
- **Base:** bent sheet steel and tubular steel, powder-coated (smooth).
- **Glides:** hard glides for carpet or felt glides for hard floors.
- **Origin of wood:** oak (*Quercus robur*) from Western Europe and/or Poland; American walnut (*Juglans nigra*) from the USA.
- **Note:** the steel frame in Métal Brut has a raw irregular surface protected by a transparent powder coating.

## DIMENSIONS (in accordance with EN 1335-1:2000)



## Fauteuil Direction

**COLOURS AND MATERIALS**



**70**  
natural solid  
oak, oiled



**75**  
solid American  
walnut, oiled



**04**  
dark stained solid  
oak, with protective  
varnish

**Armrests**



**88**  
Prouvé Blanc  
Colombe (Ecru)  
powder-coated  
(smooth)



**06**  
Japanese red  
powder-coated  
(smooth)



**12**  
deep black  
powder-coated  
(smooth)

**Base frame  
Colour group 1**



**18**  
Prouvé Blé Vert  
powder-coated  
(smooth)



**41**  
Prouvé Bleu  
Marcoule powder-  
coated (smooth)



**14**  
Prouvé Bleu  
Dynastie powder-  
coated (smooth)

**Base frame  
Colour group 2**



**13**  
Prouvé Gris  
Vermeer powder-  
coated (smooth)



**94**  
Prouvé Métal Brut  
powder-coated  
(transparent,  
smooth)

# Nubia Home, F100

**vitra.**



Nubia is a blended fabric with a very lively, natural appearance. Its fine sub-structure is interspersed with voluminous bouclé yarn, which gives the fabric depth and a soft, inviting touch. The varying combinations of yarns in natural tones yield either contrasting or calm colour compositions with a distinctly Mediterranean flair.

Nubia is available in 6 colours.

Material	2% polyamide, 30% new wool, 25% polyacrylics, 43% polyester
Weight	570 g/m <sup>2</sup> (16.8 oz/y <sup>2</sup> )
Width	140 cm (55")
Abrasion resistance	35,000 Martindale
Fastness to light	Type 5
Pilling	Grade 4
Fastness to rubbing	Grade 3-4 dry and wet



**01**  
ivory/pearl



**02**  
cream/pearl



**03**  
cream/sand



**06**  
cream/sierra  
grey

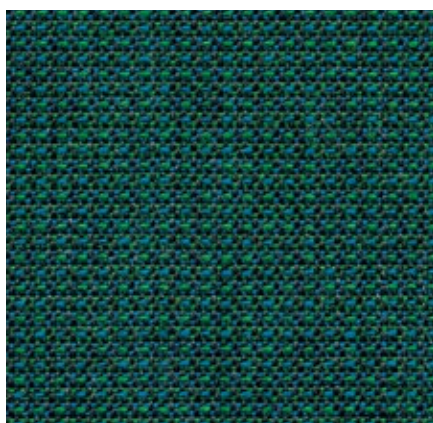


**04**  
bamboo/terra



**05**  
cream/dark  
brown

# Tress Home/Office, F80



Tress is a flat woven fabric with a lively appearance that derives from the contrast between its even structure and the natural melange of colours. The combination of yarns with varied hues creates a harmonious and yet vibrant look. Thanks to its high wool content, Tress is a durable, easy-care material with a home-like aesthetic.

Tress is available in 22 colours.

Material	8% polyamide, 73% new wool, 19% polyester
Weight	310 g/m <sup>2</sup> (9.1 oz/y <sup>2</sup> )
Width	142 cm +/- 2 cm (56")
Abrasion resistance	40,000 Martindale
Fastness to light	Type 6
Pilling	Grade 4-5
Fastness to rubbing	Grade 4-5 dry and wet



**01**  
light grey  
melange



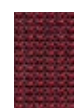
**13**  
teal blue  
melange



**20**  
mid-grey  
melange



**16**  
blackberry  
melange



**14**  
brandy melange



**06**  
ice grey melange



**12**  
steel blue  
melange



**21**  
anthracite  
melange



**08**  
aubergine  
melange



**05**  
pale rose  
melange



**10**  
pebble melange



**19**  
blue melange



**22**  
black melange



**09**  
brown melange



**07**  
emerald  
melange



**02**  
papyrus  
melange



**11**  
blue-grey  
melange



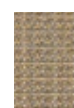
**18**  
royal blue  
melange



**17**  
plum melange



**15**  
chestnut  
melange



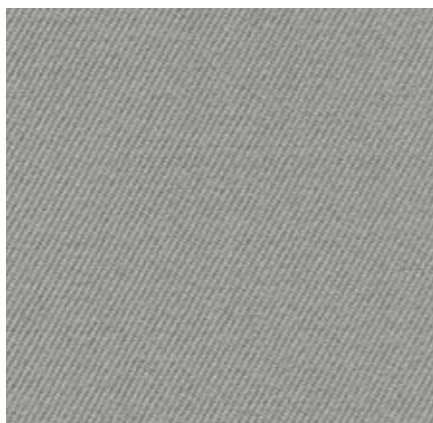
**03**  
camel melange



**04**  
canola melange

# Twill Home/Office, F60

**vitra.**



The high percentage of natural fibres gives Twill very pleasant tactile qualities and an inviting appearance. Extremely durable with excellent abrasion resistance, it combines the qualities typically found in home furnishings with the demanding requirements of the project sector.

Twill is available in 18 colours.

Material	30% polyamide, 70% new wool
Weight	325 g/m <sup>2</sup> (9.6 oz/y <sup>2</sup> )
Width	155 cm +/- 2 cm (61")
Abrasion resistance	100,000 Martindale
Fastness to light	Type 6
Pilling	Grade 4-5
Fastness to rubbing	Grade 4-5 dry and wet



# Volo Home/Office, F60



Volo is a finely structured wool blend with a refined weave that gives it an elegant appearance. This expressive textile shows strong solid colours to full advantage while simultaneously offering pleasant tactile qualities. With its soft look and appealing texture, Volo is a perfect fit for home interiors, but it is also well suited for use in the contract sector.

Volo is available in 17 colours.

Material	15% polyamide, 85% new wool
Weight	435 g/m <sup>2</sup> (12.8 oz/y <sup>2</sup> )
Width	145 cm +/- 3 cm (57")
Abrasion resistance	100,000 Martindale
Fastness to light	Type 6
Pilling	Grade 4-5
Fastness to rubbing	Grade 4-5 dry and wet



# Leather Premium F Home/Office, L50

**vitra.**



The properties of Leather Premium F are equivalent to those of Leather Premium. However, Leather Premium F is processed with a tanning agent extracted from olive tree leaves (a waste product of the olive harvest), and the entire production process is carried out with the least hazardous chemicals in the smallest possible amounts. This sustainably produced semi-aniline leather is available in a selection of 22 colours.

Material	Semi-aniline nappa leather with a very soft and supple feel, vegetable tanned
Fastness to light	Type 5
Thickness	1.1–1.3 mm
Fastness to rubbing	Grade 4 dry and wet

