



Upholstery Programme
2022



Upholstery

MENU Upholstery Programme

The MENU Upholstery Program is an overview of the textile and leathers available for MENU upholstered furniture. All textile and leather options are available in all colors. You'll find over 100 fabric and leather options, with the most popular configurations available with expedited delivery in our Quick Ship program.

Custom upholstery orders from our MENU Upholstery Program (SPEC) are ready to ship with standard delivery lead times. Our Fixed Combinations listed in this Brand Book are suggested upholsteries selected by our design team, and deliver with standard lead times. We are happy to upholster furniture using customer's own materials (COM) with extended delivery lead times, upon fabric approval.

Please note that the color references in this upholstery programme are only intended as a guide. For further information please see manufacturer websites, or contact your local MENU Sales Representative for samples or further information.

kvadrat.dk
sacho.com
nevotex.com
gabriel.dk
jab.de
dedar.com



Upholstery Selection & Furniture

Use table to determine the upholstery options available for fabric-covered items.

	AFTERROOM COLLECTION	BRASILIA COLLECTION	CAIRN POUF	CO CHAIR COLLECTION	EAVE	GODOT	HARBOUR CHAIR	HARBOUR LOUNGE	KNITTING LOUNGE CHAIR	OFFSET	READY DINING CHAIR	TAILOR	TEAROOM CHAIR	TEAROOM SOFA
TEXTILE														
PRICE CATEGORY 0														
MENU Bouclé	•	•	•	•	•	•	•	•	•	•	•	•	•	•
PRICE CATEGORY 1														
Champion, JAB	•	•	•	•	•	•	•	•	•	•	•	•	•	•
City Velvet, JAB	•	•	•	•	•	•		•	•	•		•	•	•
Hot Madison Reboot, JAB	•	•	•	•	•	•	•	•	•	•	•	•	•	•
Maple, Kvadrat	•	•	•	•	•			•	•	•	•	•	•	•
Remix 3, Kvadrat	•	•	•	•	•	•	•	•	•	•	•	•	•	•
Re-Wool, Kvadrat	•		•	•	•		•			•	•	•	•	•
Illusion, Artificial Leather, Nevotex	•	•	•	•	•	•		•	•	•	•	•	•	
PRICE CATEGORY 2														
Canvas, Kvadrat	•	•	•	•	•	•	•	•	•	•	•	•	•	•
Clay, Sacho, Kvadrat	•	•	•	•	•	•	•	•	•	•	•	•	•	•
Colline 2, Kvadrat	•	•	•	•	•	•	•	•	•	•	•	•	•	•
Fiord 2, Kvadrat	•	•	•	•	•	•	•	•	•	•	•	•	•	•
Hallingdal 65, Kvadrat	•	•	•	•	•	•	•	•	•	•	•	•	•	•
Moss, Sacho, Kvadrat	•	•	•	•	•	•	•	•	•	•	•	•	•	•
Reflect, Kvadrat	•	•	•	•	•	•	•		•	•	•	•	•	•
Savanna, Kvadrat	•	•	•	•	•		•	•	•	•	•	•	•	•
Steelcut 2, Kvadrat	•	•	•	•	•	•	•	•	•	•	•	•	•	•
Steelcut Trio 3, Kvadrat	•	•	•	•	•	•	•	•	•	•	•	•	•	•
PRICE CATEGORY 3														
Arctic, JAB	•	•		•	•	•	•	•	•	•	•	•	•	•
Safire, Sacho, Kvadrat	•	•	•	•	•	•	•	•	•	•	•	•	•	•
PRICE CATEGORY 4														
Doppiopanama, Dedar	•	•		•	•	•	•	•	•	•	•	•	•	•
Lupo, Dedar	•	•		•	•	•	•	•	•	•	•	•	•	•

O

Textile Category 0

MENU Bouclé

Textile

Price category 0
Materials 78% Acrylic,
20% Polyester, 2% Viscose
Martindale 60.000
Lightfastness 5-7
Pilling 4



MENU Bouclé

Textile

Price category 0
Materials 78% Acrylic,
20% Polyester, 2% Viscose
Martindale 60.000
Lightfastness 5-7
Pilling 4



02



06



08



16

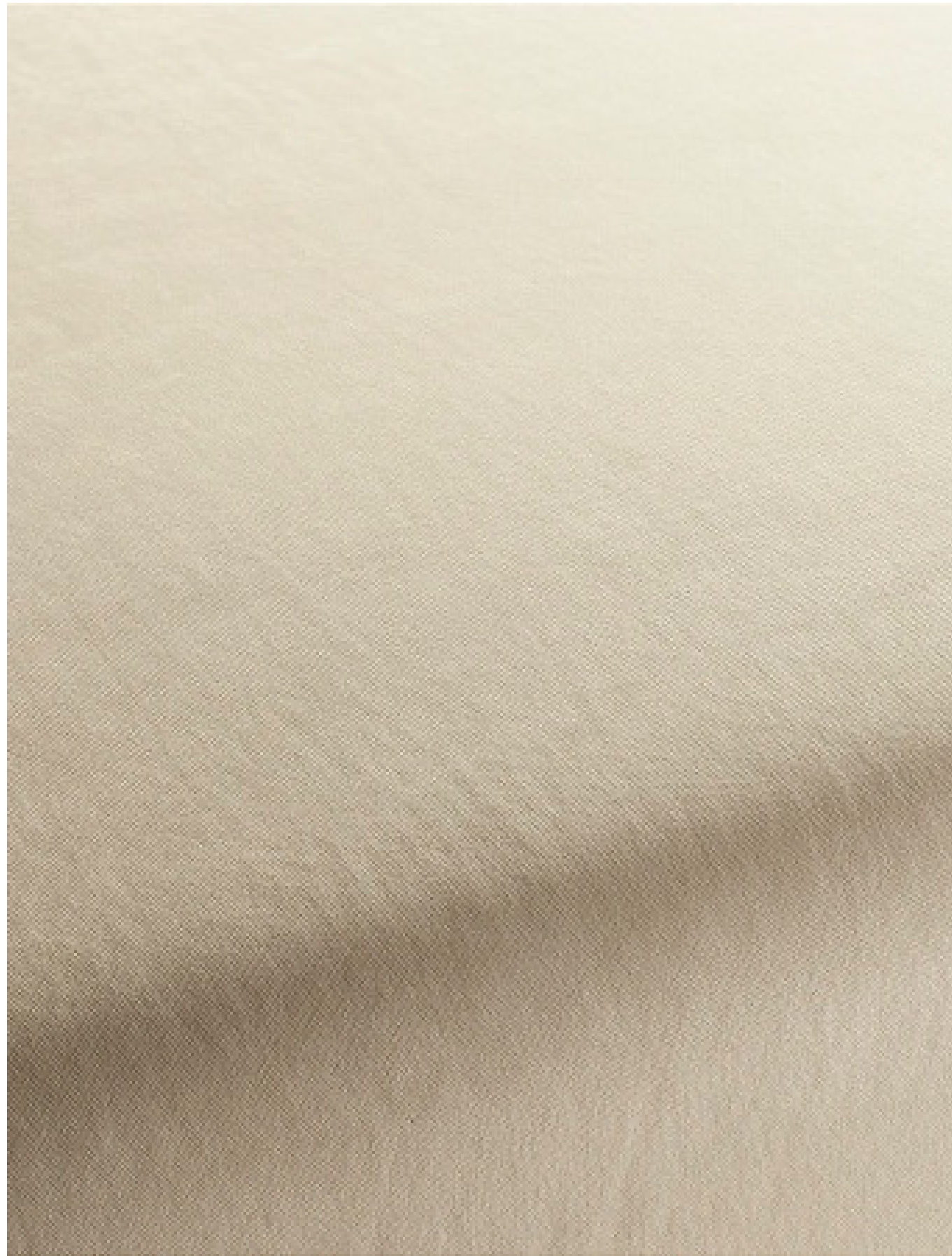
1

Textile Category 1

Champion

Textile

Price category 1
Manufacturer JAB
Materials 100% Polyester
Martindale 70.000
Lightfastness 5



Champion

Textile

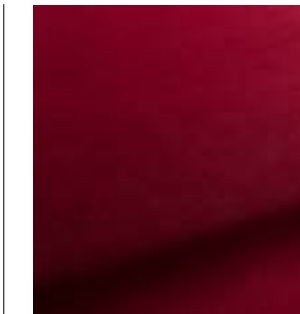
Price category 1
Manufacturer JAB
Materials 100% Polyester
Martindale 70.000
Lightfastness 5



1-3114-010



1-3114-011



1-3114-012



1-3114-020



1-3114-021



1-3114-022



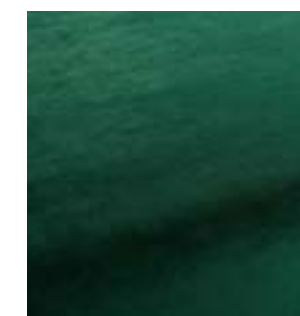
1-3114-030



1-3114-031



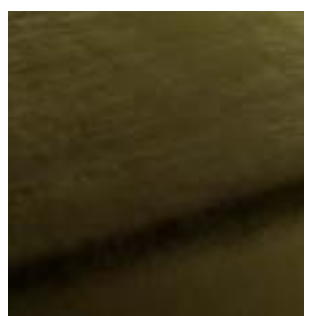
1-3114-032



1-3114-033



1-3114-034



1-3114-035



1-3114-040



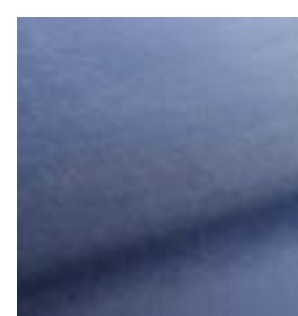
1-3114-041



1-3114-050



1-3114-051



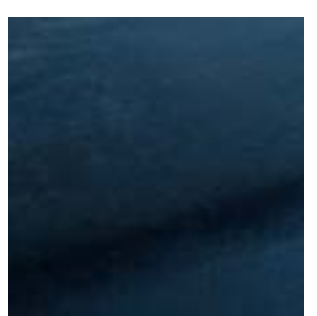
1-3114-052



1-3114-053



1-3114-054



1-3114-055

Champion

Textile

Price category 1
Manufacturer JAB
Materials 100% Polyester
Martindale 70.000
Lightfastness 5



1-3114-060



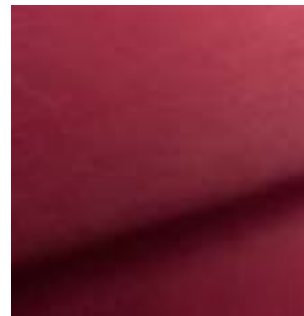
1-3114-061



1-3114-062



1-3114-063



1-3114-064



1-3114-070



1-3114-071



1-3114-072



1-3114-073



1-3114-074



1-3114-075



1-3114-080



1-3114-081



1-3114-082



1-3114-091



1-3114-092



City Velvet

Textile

Price category 1
Manufacturer JAB
Materials 100% Polyester
Martindale 100.000
Lightfastness 3-5
Pilling 4-5



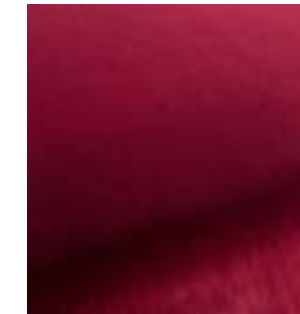
City Velvet

Textile

Price category 1
Manufacturer JAB
Materials 100% Polyester
Martindale 100.000
Lightfastness 3-5
Pilling 4-5



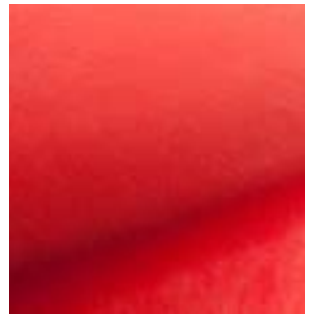
CA7832-010



CA7832-011



CA7832-012



CA7832-013



CA7832-014



CA7832-015



CA7832-020



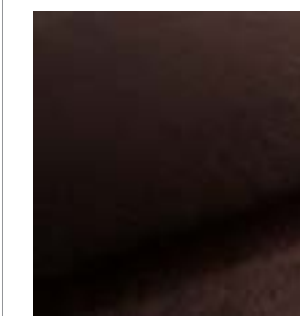
CA7832-021



CA7832-022



CA7832-023



CA7832-024



CA7832-025



CA7832-026



CA7832-027



CA7832-030



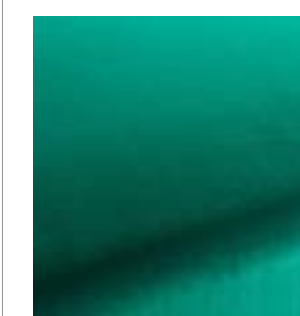
CA7832-031



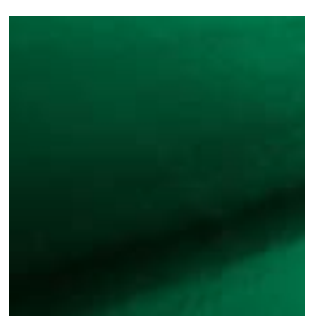
CA7832-032



CA7832-033



CA7832-034



CA7832-035

City Velvet

Textile

Price category 1
Manufacturer JAB
Materials 100% Polyester
Martindale 100.000
Lightfastness 3-5
Pilling 4-5



CA7832-036



CA7832-037



CA7832-038



CA7832-039



CA7832-040



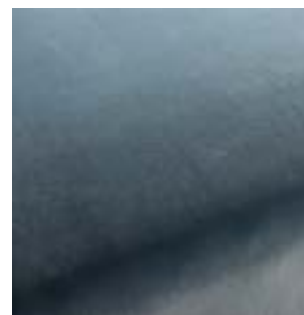
CA7832-041



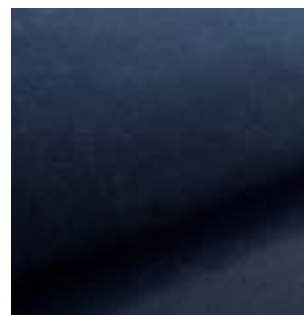
CA7832-042



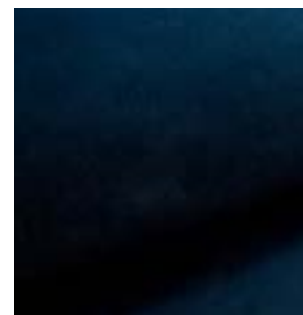
CA7832-043



CA7832-050



CA7832-051



CA7832-052



CA7832-053



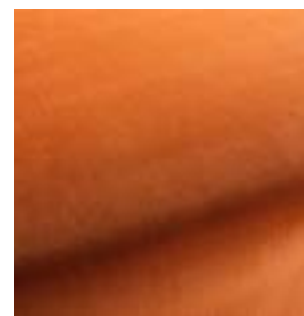
CA7832-055



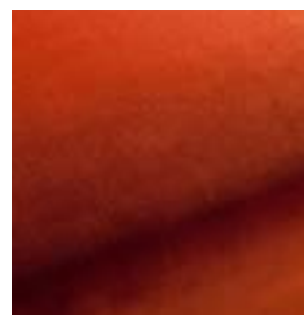
CA7832-056



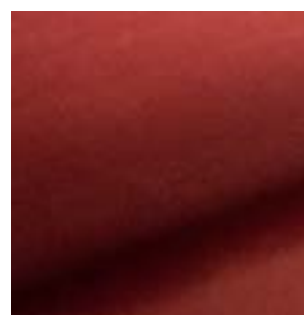
CA7832-060



CA7832-061



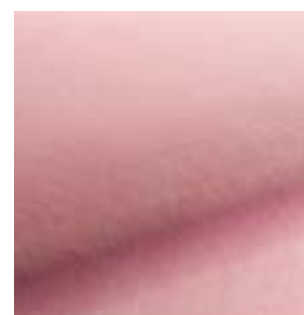
CA7832-062



CA7832-063



CA7832-064

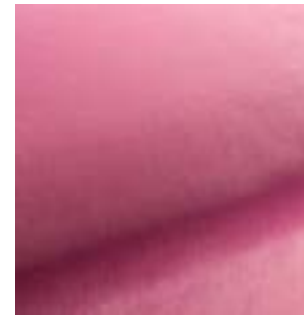


CA7832-065

City Velvet

Textile

Price category 1
Manufacturer JAB
Materials 100% Polyester
Martindale 100.000
Lightfastness 3-5
Pilling 4-5



CA7832-066



CA7832-067



CA7832-068



CA7832-069



CA7832-070



CA7832-071



CA7832-072



CA7832-073



CA7832-074



CA7832-075



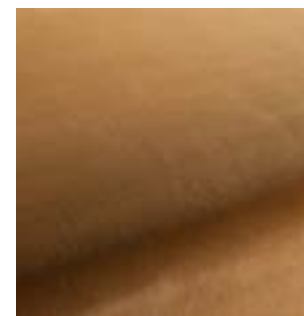
CA7832-076



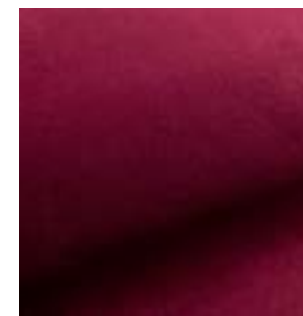
CA7832-077



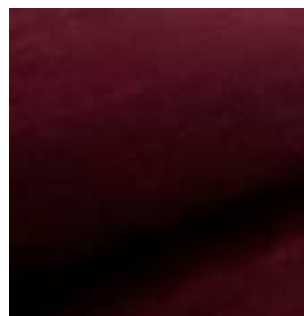
CA7832-078



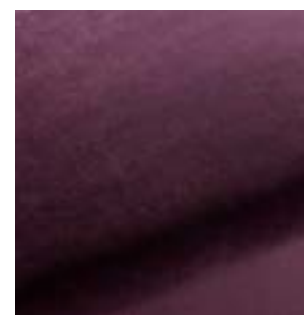
CA7832-079



CA7832-080



CA7832-081



CA7832-082



CA7832-083



CA7832-084



CA7832-085

City Velvet

Textile

Price category 1
Manufacturer JAB
Materials 100% Polyester
Martindale 100.000
Lightfastness 3-5
Pilling 4-5



CA7832-086



CA7832-087



CA7832-088



CA7832-089



CA7832-090



CA7832-091



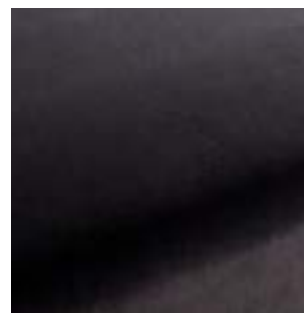
CA7832-092



CA7832-093



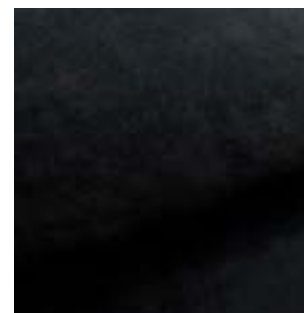
CA7832-094



CA7832-095



CA7832-096



CA7832-099



CA7832-130



CA7832-160



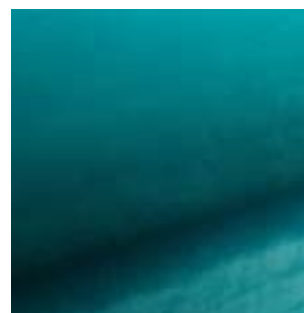
CA7832-161



CA7832-170



CA7832-180

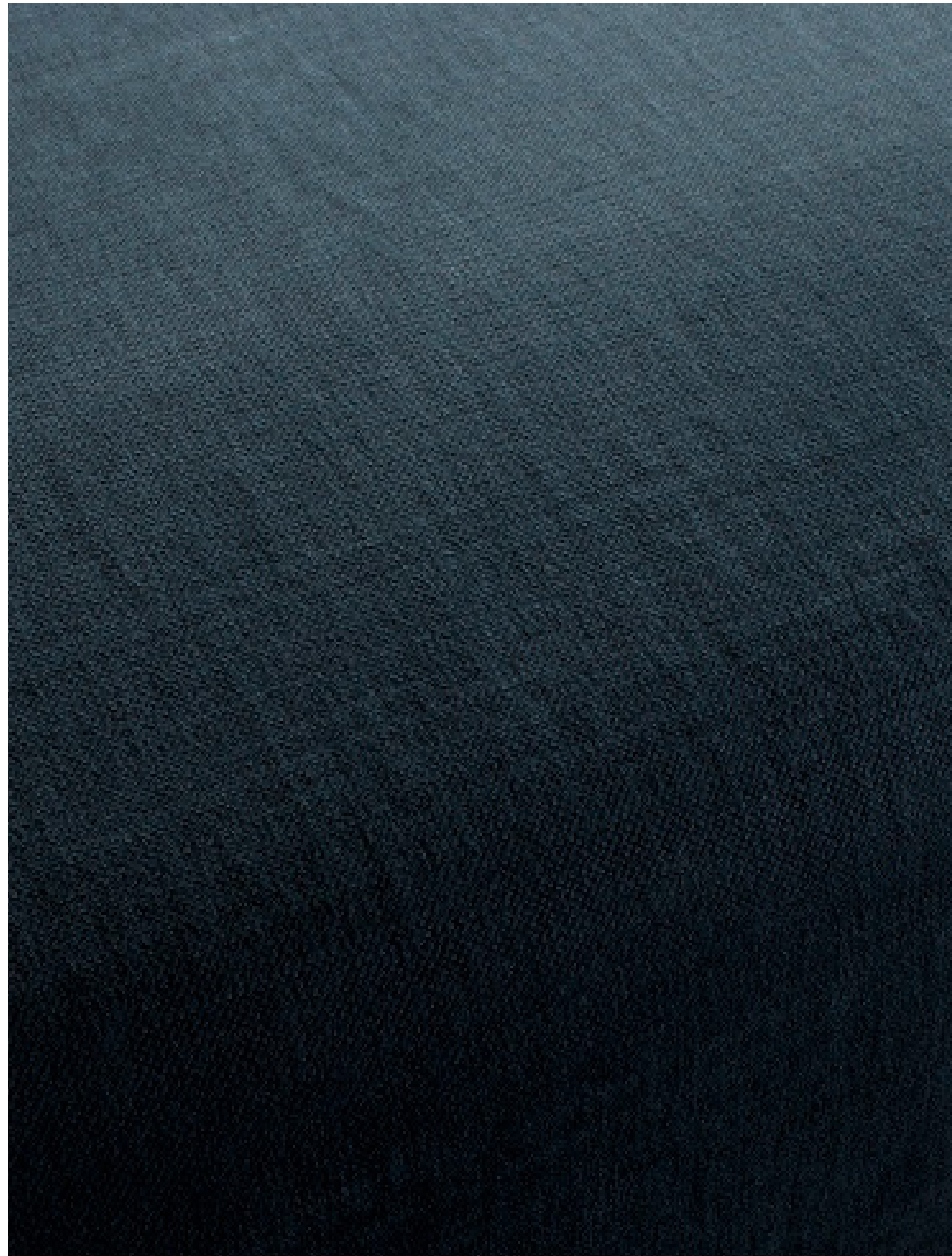


CA7832-181

Hot Madison Reboot

Textile

Price category 1
Manufacturer JAB
Materials 63% Cotton, 37% Linen
Martindale 55.000
Lightfastness 4-5
Pilling 4-5



Hot Madison Reboot

Textile

Price category 1
Manufacturer JAB
Materials 63% Cotton, 37% Linen
Martindale 55.000
Lightfastness 4-5
Pilling 4-5



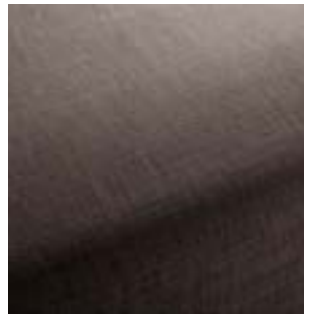
CH1249-011



CH1249-012



CH1249-013



CH1249-020



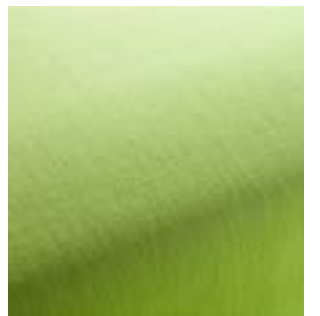
CH1249-021



CH1249-022



CH1249-023



CH1249-037



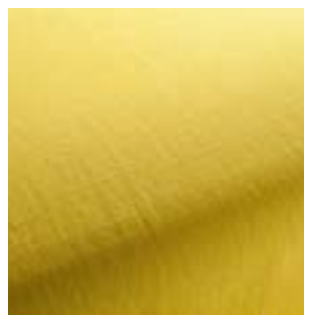
CH1249-038



CH1249-039



CH1249-043



CH1249-045



CH1249-046



CH1249-046



CH1249-050



CH1249-052



CH1249-053



CH1249-055



CH1249-056



CH1249-059

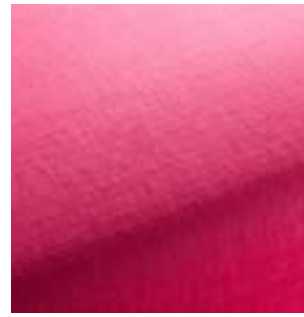
Hot Madison Reboot

Textile

Price category 1
Manufacturer JAB
Materials 63% Cotton, 37% Linen
Martindale 55.000
Lightfastness 4-5
Pilling 4-5



CH1249-062



CH1249-063



CH1249-064



CH1249-070



CH1249-071



CH1249-072



CH1249-073



CH1249-074



CH1249-075



CH1249-076



CH1249-077



CH1249-078



CH1249-079



CH1249-080



CH1249-081



CH1249-082



CH1249-083



CH1249-084



CH1249-085



CH1249-086

Hot Madison Reboot

Textile

Price category 1
Manufacturer JAB
Materials 63% Cotton, 37% Linen
Martindale 55.000
Lightfastness 4-5
Pilling 4-5



CH1249-087



CH1249-088



CH1249-089



CH1249-091



CH1249-092



CH1249-093



CH1249-094



CH1249-095



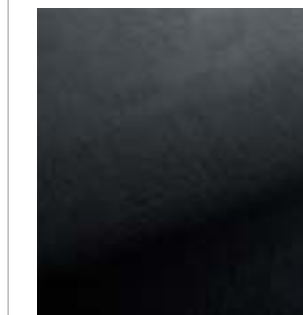
CH1249-096



CH1249-097



CH1249-098



CH1249-099



CH1249-126



CH1249-127



CH1249-130



CH1249-131



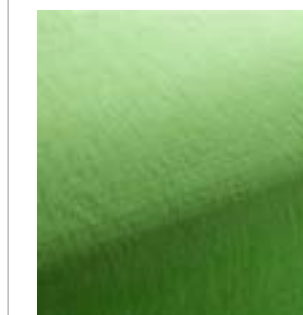
CH1249-133



CH1249-134



CH1249-135



CH1249-139

Hot Madison Reboot

Textile

Price category 1
Manufacturer JAB
Materials 63% Cotton, 37% Linen
Martindale 55.000
Lightfastness 4-5
Pilling 4-5



CH1249-155



CH1249-170



CH1249-171



CH1249-172



CH1249-180



CH1249-181



CH1249-182



CH1249-183



CH1249-184



CH1249-185



CH1249-186



CH1249-191



CH1249-192



CH1249-193



CH1249-194



CH1249-195



CH1249-196



CH1249-197



CH1249-230



CH1249-231

Hot Madison Reboot

Textile

Price category 1
Manufacturer JAB
Materials 63% Cotton, 37% Linen
Martindale 55.000
Lightfastness 4-5
Pilling 4-5



CH1249-232



CH1249-233



CH1249-234



CH1249-245



CH1249-248



CH1249-404



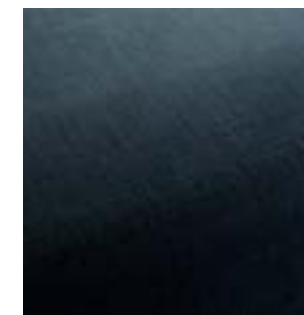
CH1249-410



CH1249-419



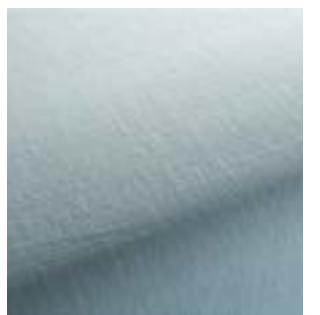
CH1249-420



CH1249-424



CH1249-459



CH1249-469



CH1249-471



CH1249-476



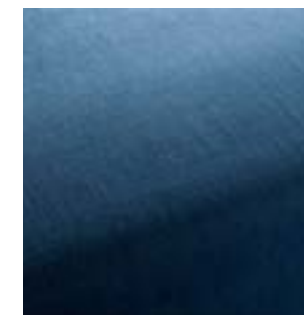
CH1249-490



CH1249-495



CH1249-497



CH1249-499



CH1249-509



CH1249-517

Hot Madison Reboot

Textile

Price category 1
Manufacturer JAB
Materials 63% Cotton, 37% Linen
Martindale 55.000
Lightfastness 4-5
Pilling 4-5



CH1249-521



CH1249-524



CH1249-525



CH1249-528



CH1249-694-



CH1249-695



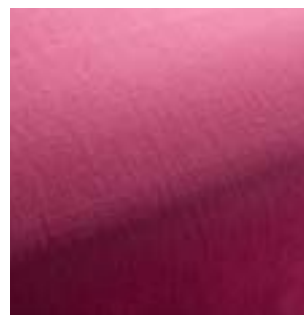
CH1249-696



CH1249-697



CH1249-698



CH1249-707



CH1249-700



CH1249-701



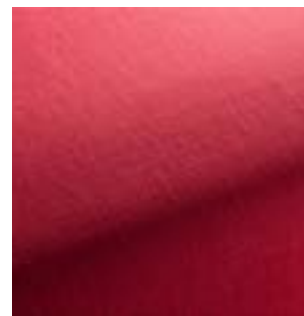
CH1249-702



CH1249-703



CH1249-704



CH1249-705



CH1249-706



CH1249-707



CH1249-708



CH1249-709

Hot Madison Reboot

Textile

Price category 1
Manufacturer JAB
Materials 63% Cotton, 37% Linen
Martindale 55.000
Lightfastness 4-5
Pilling 4-5



CH1249-710



CH1249-711



CH1249-712



CH1249-713



CH1249-714



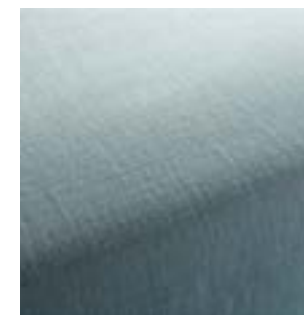
CH1249-715



CH1249-716



CH1249-717



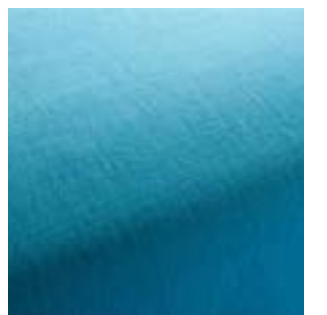
CH1249-718



CH1249-719



CH1249-720



CH1249-721



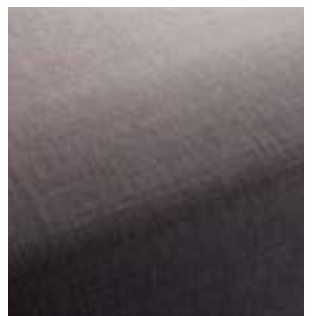
CH1249-722



CH1249-723



CH1249-724



CH1249-725



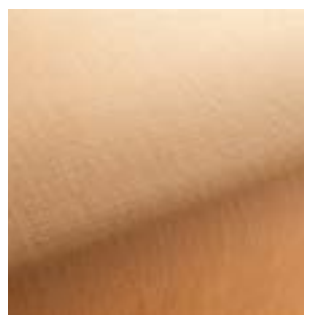
CH1249-884



CH1249-893



CH1249-894



CH1249-896

Hot Madison Reboot

Textile

Price category 1
Manufacturer JAB
Materials 63% Cotton, 37% Linen
Martindale 55.000
Lightfastness 4-5
Pilling 4-5



CH1249-897



CH1249-898



CH1249-934



CH1249-987



CH1249-988



CH1249-989



CH1249-990



CH1249-991



CH1249-992



CH1249-993



CH1249-994

Maple

Textile

Price category 1
Manufacturer Kvadrat
Materials 81% Viscose, 15% Linen,
4% Non-woven Polyester backing
Martindale 30.000
Lightfastness 5-7
Pilling 5



Maple

Textile

Price category 1
Manufacturer Kvadrat
Materials 81% Viscose, 15% Linen,
4% Non-woven Polyester backing
Martindale 30.000
Lightfastness 5-7
Pilling 5



Maple

Textile

Price category 1
Manufacturer Kvadrat
Materials 81% Viscose, 15% Linen,
4% Non-woven Polyester backing
Martindale 30.000
Lightfastness 5-7
Pilling 5



0732



0742



0762



0792



0832



0862

Remix 3

Textile

Price category 1
Manufacturer Kvadrat
Materials 90% New wool, 10% Nylon
Martindale 100.000
Lightfastness 5-7
Pilling 4



Remix 3

Textile

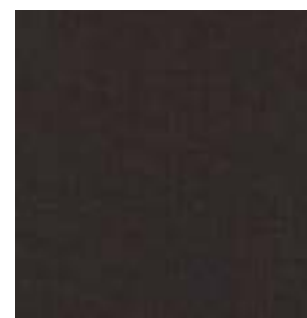
Price category 1
Manufacturer Kvadrat
Materials 90% New wool, 10% Nylon
Martindale 100.000
Lightfastness 5-7
Pilling 4



Remix 3

Textile

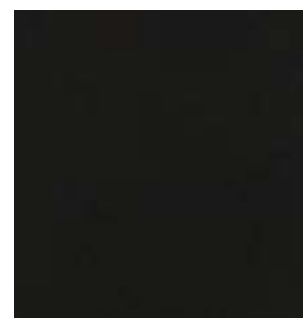
Price category 1
Manufacturer Kvadrat
Materials 90% New wool, 10% Nylon
Martindale 100.000
Lightfastness 5-7
Pilling 4



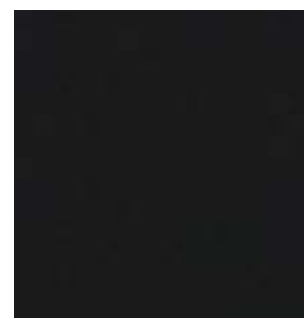
0356



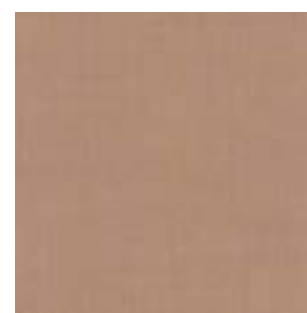
0362



0373



0383



0406



0412



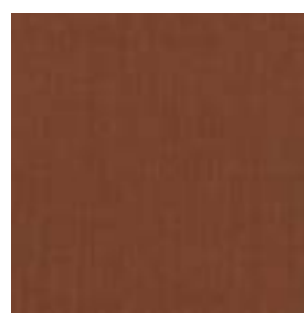
0422



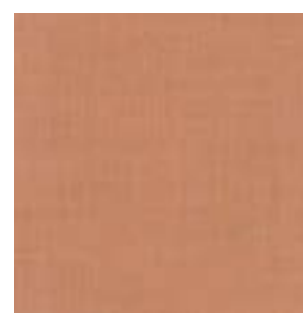
0433



0443



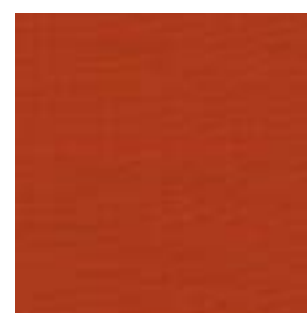
0452



0516



0536



0543



0566



0606



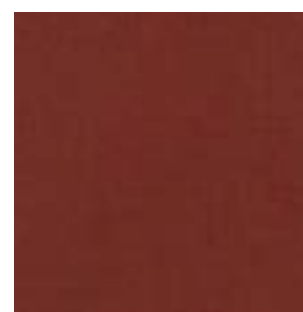
0612



0632



0643



0653

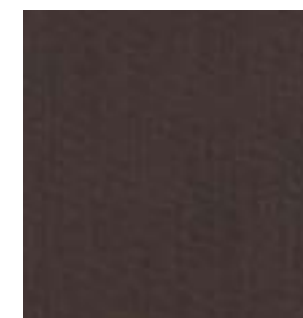


0662

Remix 3

Textile

Price category 1
Manufacturer Kvadrat
Materials 90% New wool, 10% Nylon
Martindale 100.000
Lightfastness 5-7
Pilling 4



0672



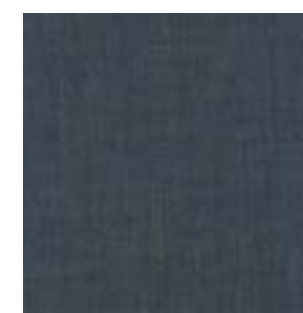
0682



0686



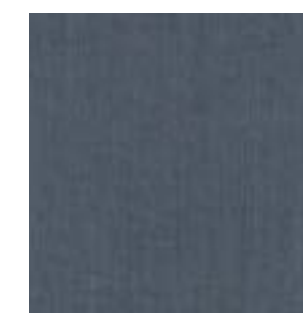
0692



0716



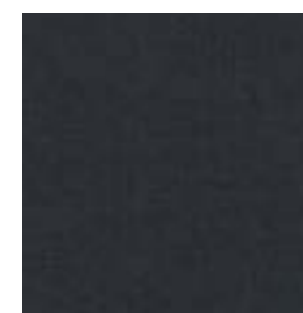
0722



0733



0743



0753



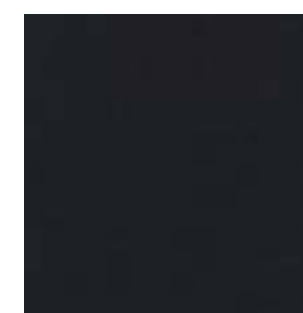
0762



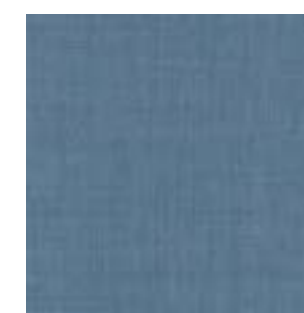
0773



0783



0796



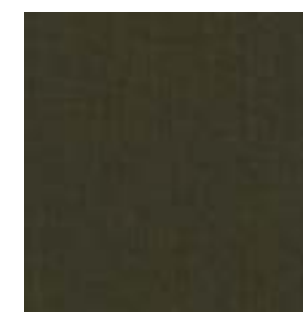
0816



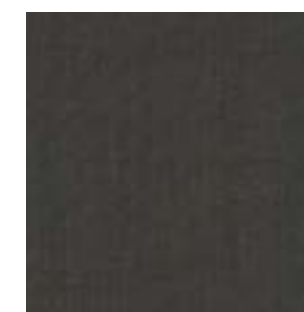
0823



0836



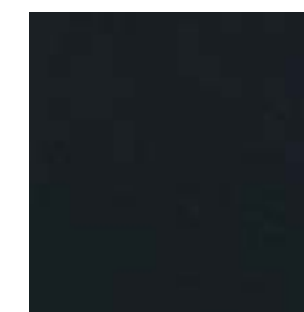
0842



0852



0866



0873

Remix 3

Textile

Price category 1
Manufacturer Kvadrat
Materials 90% New wool, 10% Nylon
Martindale 100.000
Lightfastness 5-7
Pilling 4



0906



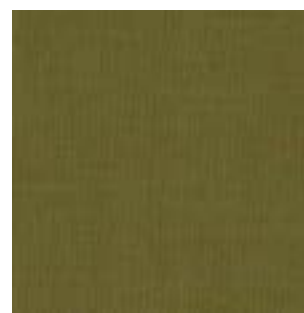
0912



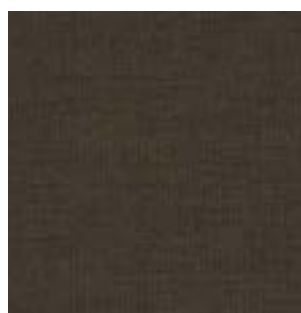
0923



0933



0942



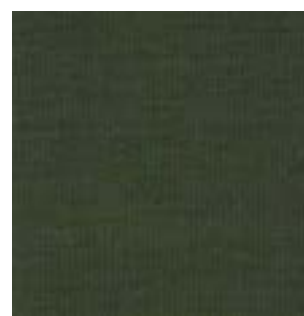
0954



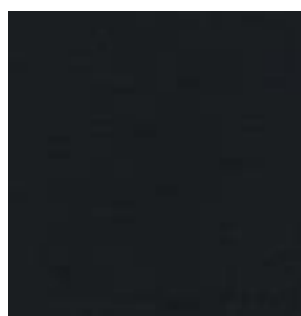
0962



0973



0982



0996

Re-Wool

Textile

Price category 1
Manufacturer Kvadrat
Materials 45% new wool worsted,
45% recycled wool, 10% nylon
Martindale 100.000
Lightfastness 5-7 (ISO 1-8)
Pilling 4 (ISO 1-5)



Re-Wool

Textile

Price category 1
Manufacturer Kvadrat
Materials 45% new wool worsted,
45% recycled wool, 10% nylon
Martindale 100.000
Lightfastness 5-7 (ISO 1-8)
Pilling 4 (ISO 1-5)



Re-Wool

Textile



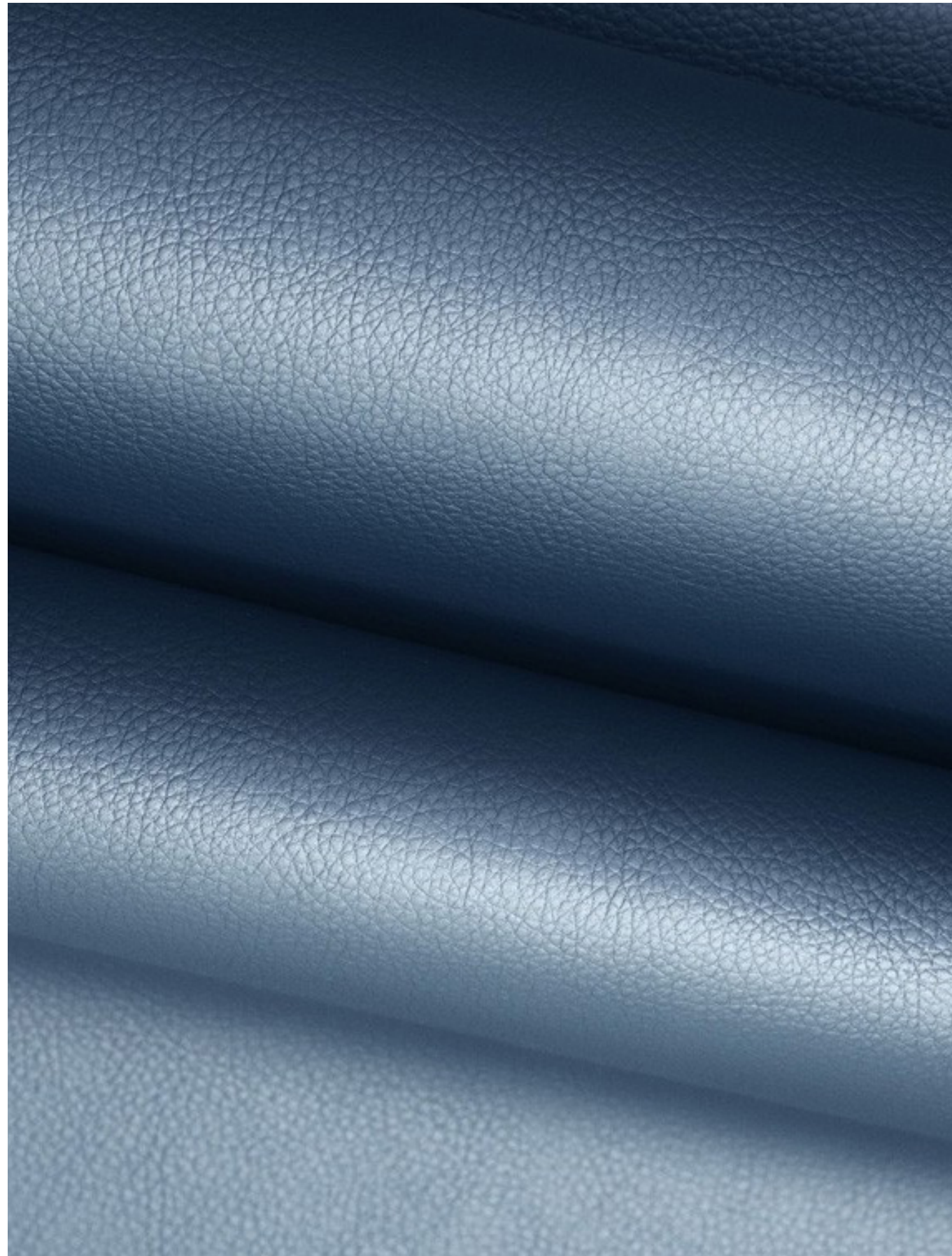
0868

Price category 1
Manufacturer Kvadrat
Materials 45% new wool worsted,
45% recycled wool, 10% nylon
Martindale 100.000
Lighfastness 5-7 (ISO 1-8)
Pilling 4 (ISO 1-5)

Illusion

Artificial leather

Price category 1
Manufacturer Nevotex
Materials Artificial leather
Thickness 1 mm



*Please note Instill is an artificial leather

Illusion

Artificial leather

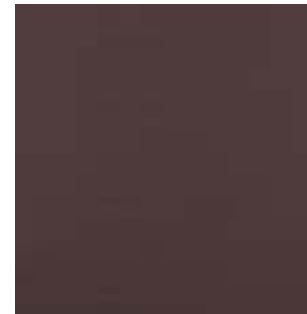
Price category 1
Manufacturer Nevotex
Materials Artificial leather
Thickness 1 mm



Illusion

Artificial leather

Price category 1
Manufacturer Nevotex
Materials Artificial leather
Thickness 1 mm



48013



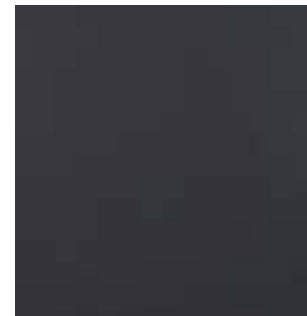
46508



47124



67403



68523



58290



68746



65066



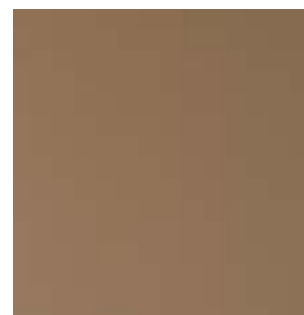
67382



00110



83430



85020



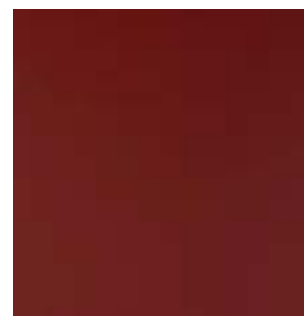
44388



36850



23660



28040



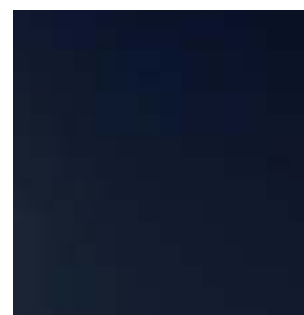
75566



76725



77773



66745

Illusion

Artificial leather

Price category 1
Manufacturer Nevotex
Materials Artificial leather
Thickness 1 mm



47069

2

Textile Category 2

Canvas 2

Textile

Price category 2
Manufacturer Kvadrat
Materials 90% New wool, 10% Nylon
Martindale 100.000
Lightfastness 5-7
Pilling 4-5



Canvas 2

Textile

Price category 2
Manufacturer Kvadrat
Materials 90% New wool, 10% Nylon
Martindale 100.000
Lightfastness 5-7
Pilling 4-5



Canvas 2

Textile

Price category 2
Manufacturer Kvadrat
Materials 90% New wool, 10% Nylon
Martindale 100.000
Lightfastness 5-7
Pilling 4-5



576



614



644



654



666



674



684



694



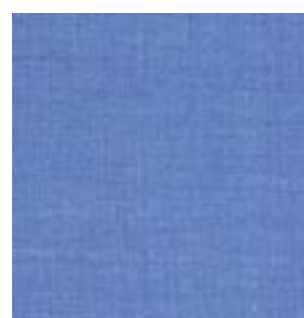
716



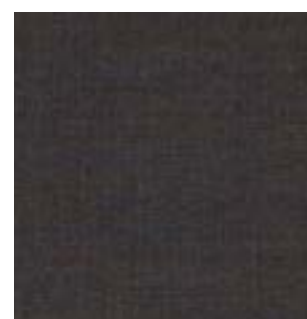
726



734



746



764



786



794



836



854



926



936



946

Canvas 2

Textile

Price category 2
Manufacturer Kvadrat
Materials 90% New wool, 10% Nylon
Martindale 100.000
Lightfastness 5-7
Pilling 4-5



954



964



974



984



996

Clay

Textile

Price category 2
Manufacturer Sahco
Materials 76% Linen, 21% Cotton,
3% Polyester
Martindale 45.000
Lightfastness 4-6
Pilling 4



Clay

Textile

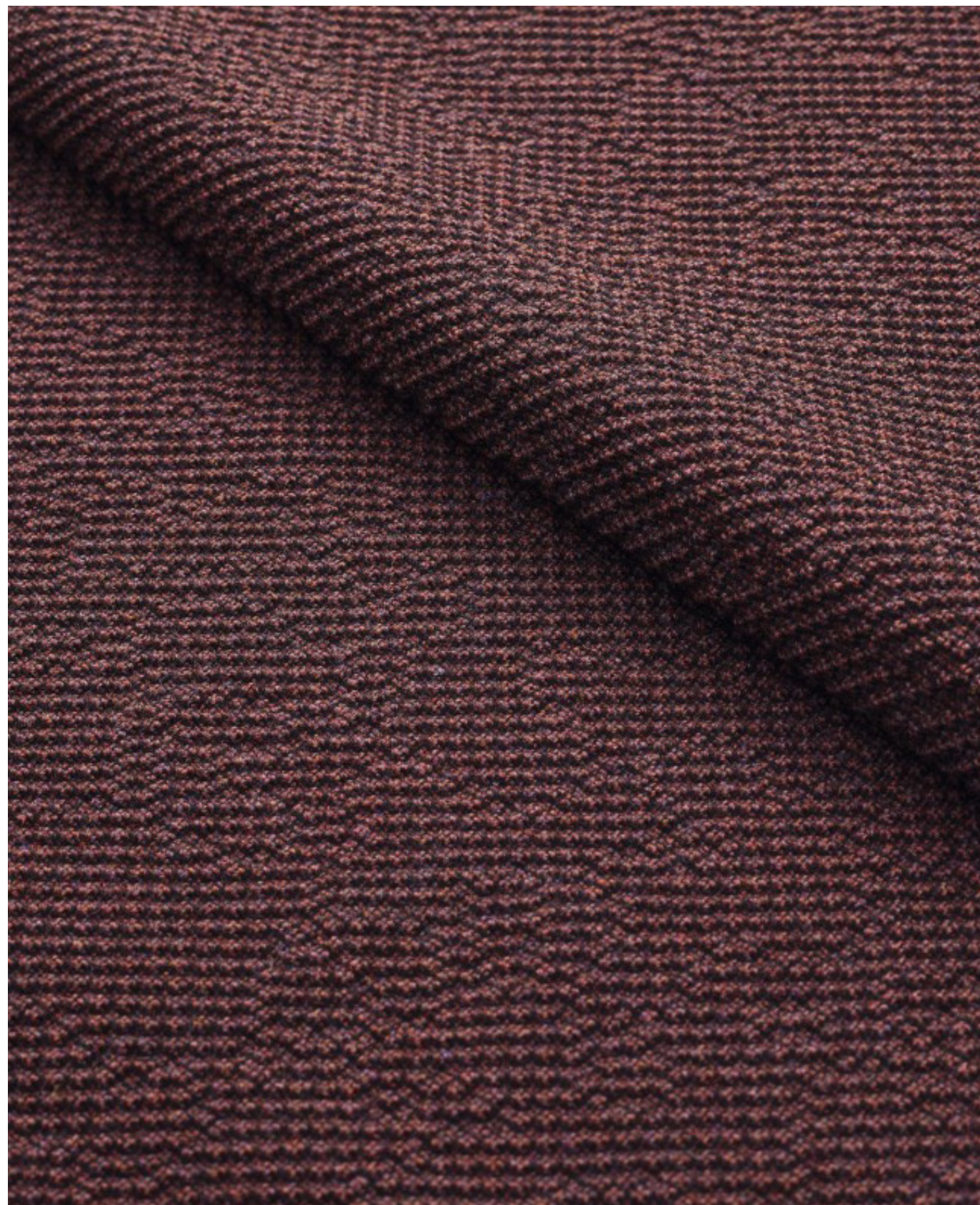
Price category 2
Manufacturer Sahco
Materials 76% Linen, 21% Cotton,
3% Polyester
Martindale 45.000
Lightfastness 4-6
Pilling 4



Colline 2

Textile

Price category 2
Manufacturer Kvadrat
Materials 75% wool, 17% Acrylic,
8% Nylon
Martindale 100.000
Lightfastness 6
Pilling 4-5



Colline 2

Textile

Price category 2
Manufacturer Kvadrat
Materials 75% wool, 17% Acrylic,
8% Nylon
Martindale 100.000
Lightfastness 6
Pilling 4-5



0127



0147



0177



0227



0347



0397



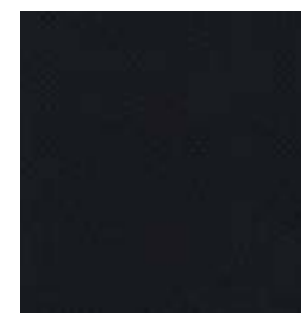
0657



0677



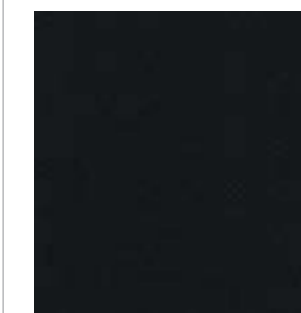
0737



0787



0797



0987

Fiord 2

Textile

Price category 2
Manufacturer Kvadrat
Materials 92% New wool, 8% Nylon
Martindale 60.000
Lightfastness 6
Pilling 4-5



Fiord 2

Textile

Price category 2
Manufacturer Kvadrat
Materials 92% New wool, 8% Nylon
Martindale 60.000
Lightfastness 6
Pilling 4-5



Fiord 2

Textile

Price category 2
Manufacturer Kvadrat
Materials 92% New wool, 8% Nylon
Martindale 60.000
Lighfastness 6
Pilling 4-5



571



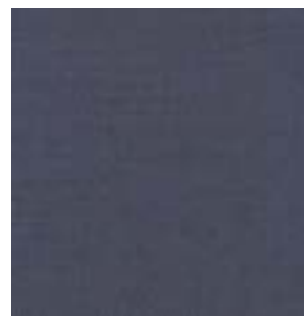
581



591



642



672



721



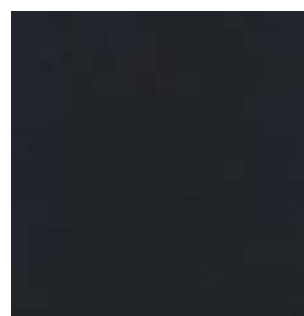
751



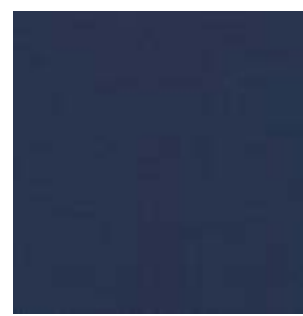
762



771



782



791



821



862



951



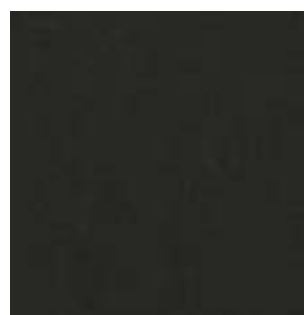
961



971



981



991

Hallingdal 65

Textile

Price category 2
Manufacturer Kvadrat
Materials 70% New wool, 30% Viscose
Martindale 100.000
Lightfastness 5-7
Pilling 3-4



Hallingdal 65

Textile

Price category 2
Manufacturer Kvadrat
Materials 70% New wool, 30% Viscose
Martindale 100.000
Lightfastness 5-7
Pilling 3-4



Hallingdal 65

Textile

Price category 2
Manufacturer Kvadrat
Materials 70% New wool, 30% Viscose
Martindale 100.000
Lightfastness 5-7
Pilling 3-4



0368



0370



0376



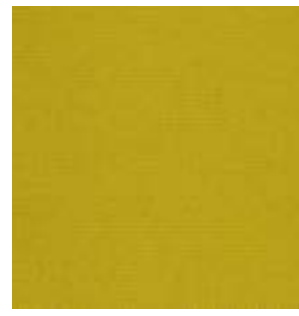
0390



0407



0420



0457



0526



0547



0563



0573



0590



0596



0600



0657



0660



0674



0680



0687



0694

Hallingdal 65

Textile

Price category 2
Manufacturer Kvadrat
Materials 70% New wool, 30% Viscose
Martindale 100.000
Lightfastness 5-7
Pilling 3-4



0702



0723



0733



0750



0753



0754



0763



0764



0773



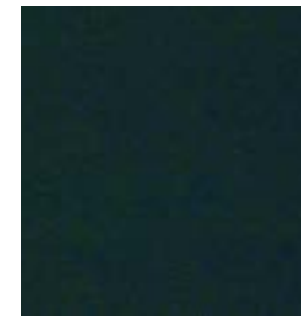
0810



0840



0850



0890



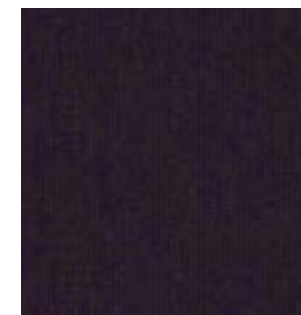
0907



0944



0960



0968

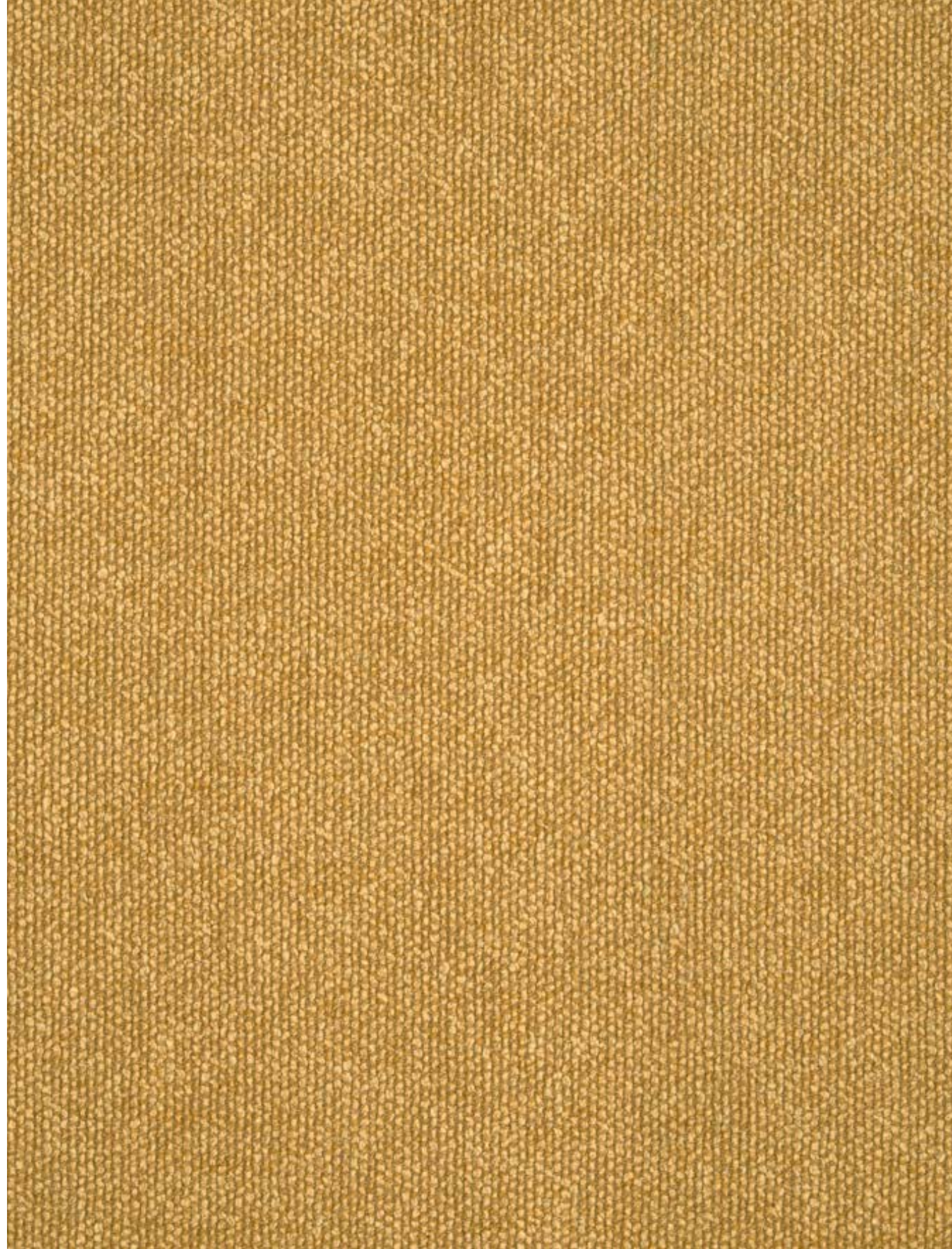


0980

Moss

Textile

Price category 2
Manufacturer Sahco
Materials 52% Cotton, 22% Viscose,
14% Acrylic, 6% Linen, 3% Polyester,
3% Nylon
Martindale 45.000
Lightfastness 6-7
Pilling 4-5



Moss

Textile

Price category 2
Manufacturer Sahco
Materials 52% Cotton, 22% Viscose,
14% Acrylic, 6% Linen, 3% Polyester,
3% Nylon
Martindale 45.000
Lightfastness 6-7
Pilling 4-5



Moss

Textile

Price category 2
Manufacturer Sahco
Materials 52% Cotton, 22% Viscose,
14% Acrylic, 6% Linen, 3% Polyester,
3% Nylon
Martindale 45.000
Lightfastness 6-7
Pilling 4-5



0021



0022

Reflect

Textile

Price category 2
Manufacturer Kvadrat
Materials 100% post-consumer recycled polyester
Martindale 100.000
Lightfastness 6 (ISO 1-8)
Pilling 4 (ISO 1-5)



Reflect

Textile

Price category 2
Manufacturer Kvadrat
Materials 100% post-consumer recycled polyester
Martindale 100.000
Lightfastness 6 (ISO 1-8)
Pilling 4 (ISO 1-5)



Reflect

Textile

Price category 2
Manufacturer Kvadrat
Materials 100% post-consumer recycled polyester
Martindale 100.000
Lightfastness 6 (ISO 1-8)
Pilling 4 (ISO 1-5)



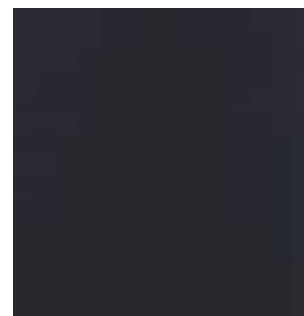
0614



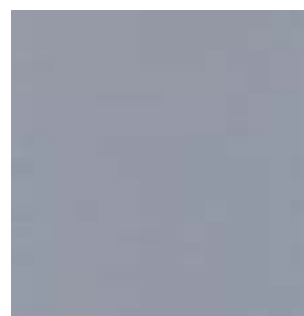
0644



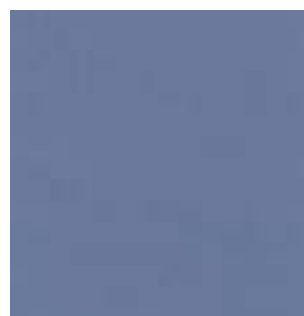
0674



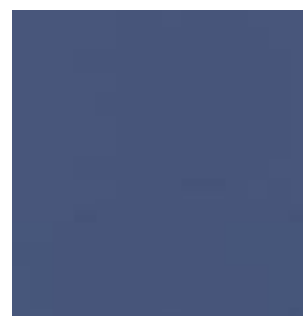
0694



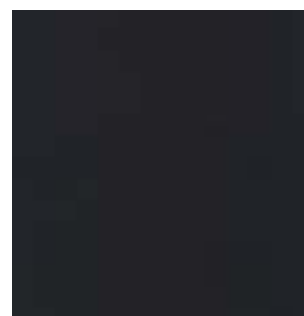
0714



0744



0774



0794



0824



0884



0924



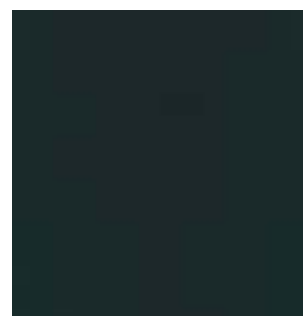
0944



0964



0984



0994

Savanna

Textile

Price category 2
Manufacturer Kvadrat
Materials 34% Polyester, 31% wool,
26% Acrylic, 4% Cotton, 3% Nylon,
2% Linen
Martindale 45.000
Lightfastness 6-7
Pilling 3



Savanna

Textile

Price category 2
Manufacturer Kvadrat
Materials 34% Polyester, 31% wool,
26% Acrylic, 4% Cotton, 3% Nylon,
2% Linen
Martindale 45.000
Lightfastness 6-7
Pilling 3



242



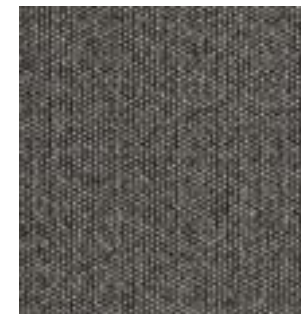
262



622



122



152



222



292



202



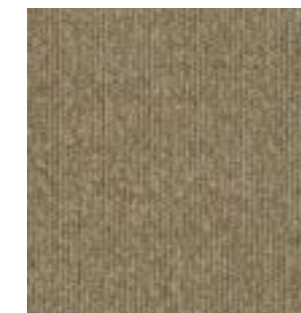
952



192



622

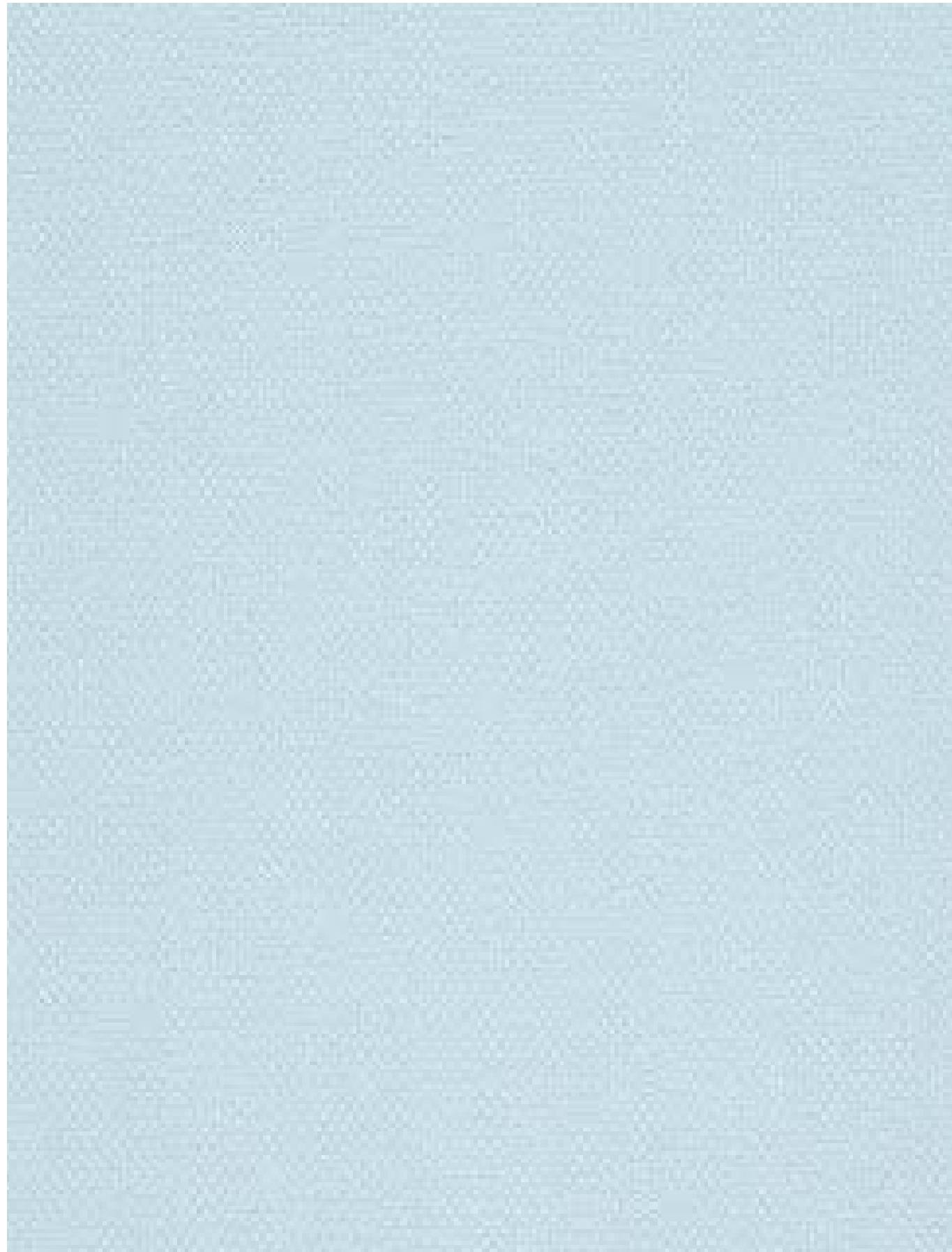


442

Steelcut 2

Textile

Price category 2
Manufacturer Kvadrat
Materials 90% New wool, 10% Nylon
Martindale 100.000
Lightfastness 5-7
Pilling 3-4



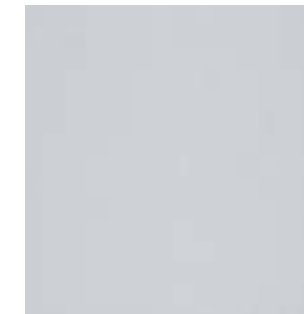
Steelcut 2

Textile

Price category 2
Manufacturer Kvadrat
Materials 90% New wool, 10% Nylon
Martindale 100.000
Lightfastness 5-7
Pilling 3-4



110



120



135



140



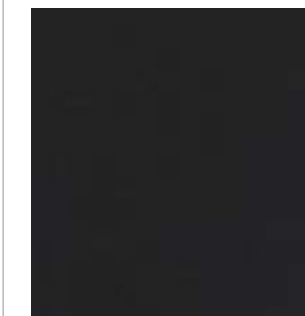
155



160



180



190



220



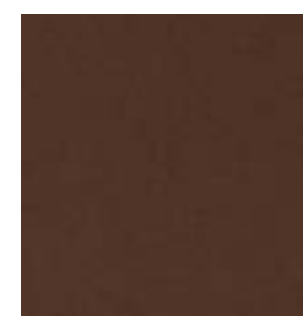
240



255



265



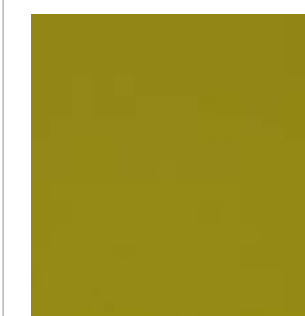
365



370



380



435



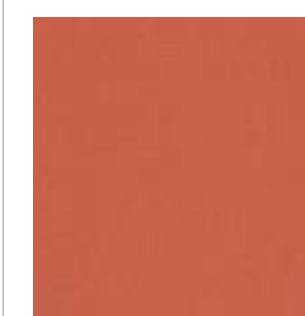
445



535



545



550

Steelcut 2

Textile

Price category 2
Manufacturer Kvadrat
Materials 90% New wool, 10% Nylon
Martindale 100.000
Lightfastness 5-7
Pilling 3-4



605



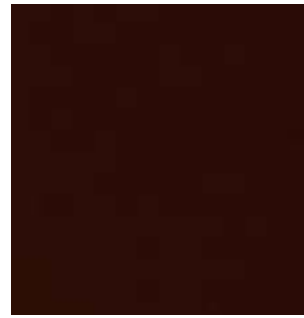
615



625



635



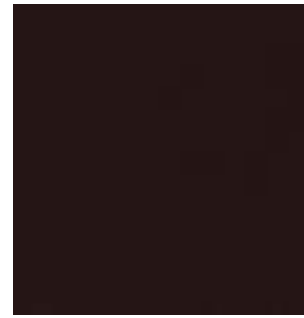
655



660



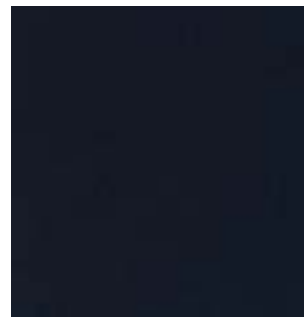
685



695



760



775



780



820



835



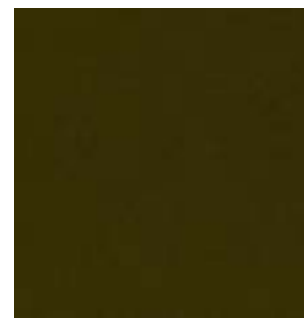
935



950



975



985



1122



0917

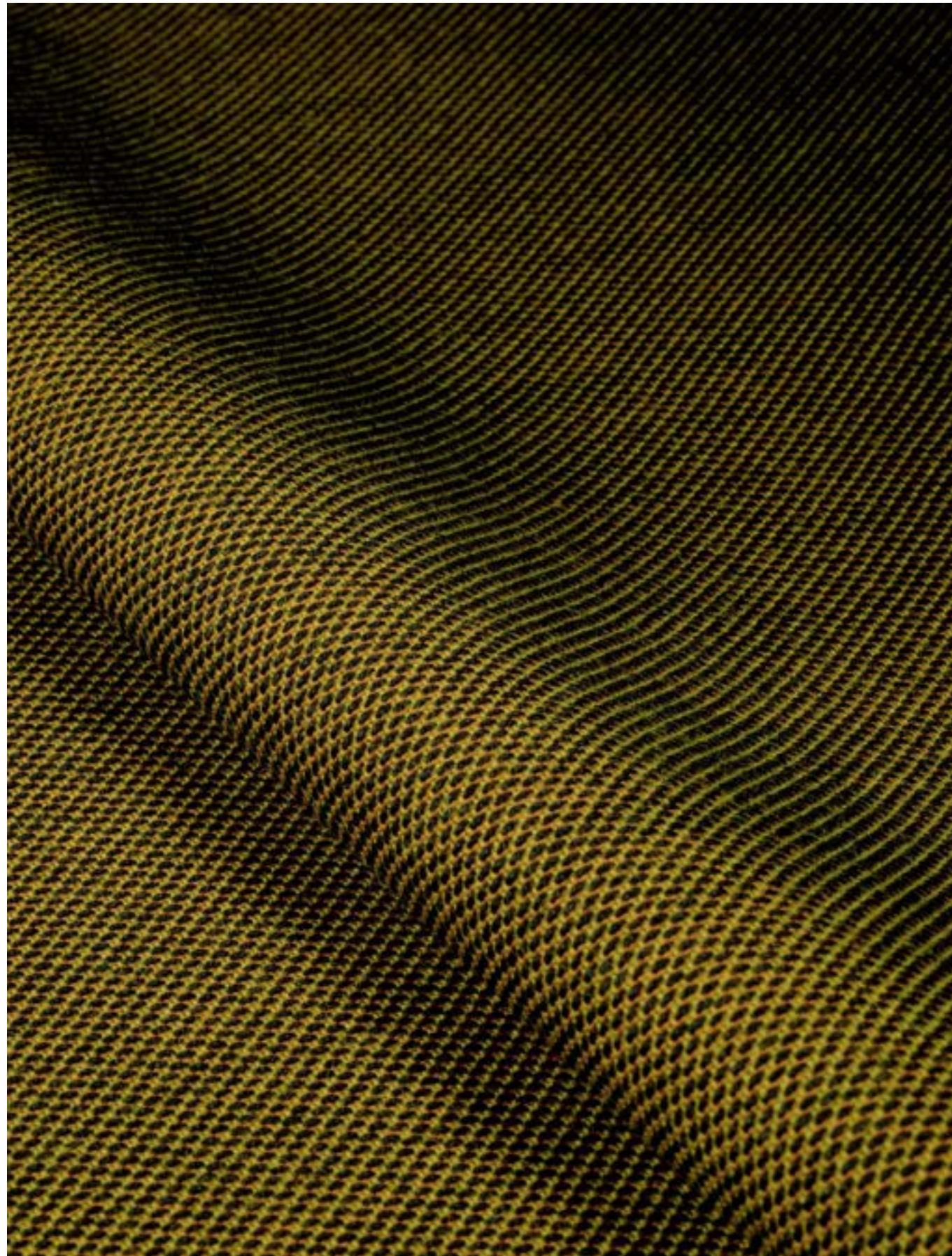


1362

Steelcut Trio 3

Textile

Price category 2
Manufacturer Kvadrat
Materials 90% New wool, 10% Nylon
Martindale 100.000
Lightfastness 5-7
Pilling 4



Steelcut Trio 3

Textile

Price category 2
Manufacturer Kvadrat
Materials 90% New wool, 10% Nylon
Martindale 100.000
Lightfastness 5-7
Pilling 4



105



113



124



133



153



176



195



205



213



226



236



246



253



266



276



283



336



376



383



416

Steelcut Trio 3

Textile

Price category 2
Manufacturer Kvadrat
Materials 90% New wool, 10% Nylon
Martindale 100.000
Lightfastness 5-7
Pilling 4



426



436



446



453



466



476



506



515



526



533



553



576



616



636



645



666



686



713



716

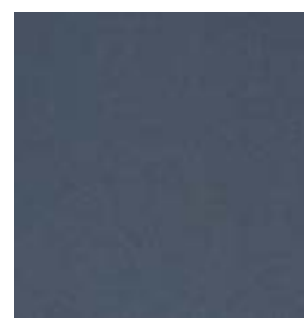


746

Steelcut Trio 3

Textile

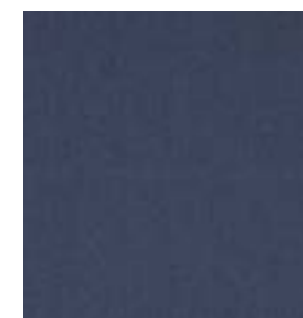
Price category 2
Manufacturer Kvadrat
Materials 90% New wool, 10% Nylon
Martindale 100.000
Lightfastness 5-7
Pilling 4



756



776



796



806



865



883



906



916



946



953



966



976



983



996

3

Textile Category 3

Arctic

Textile

Price category 3
Manufacturer JAB
Materials 51% Polyacrylic,
31% Viscose, 18% Polyester
Martindale 30.000



Arctic

Textile

Price category 3
Manufacturer JAB
Materials 51% Polyacrylic,
31% Viscose, 18% Polyester
Martindale 30.000



1-1365-040



1-1365-070

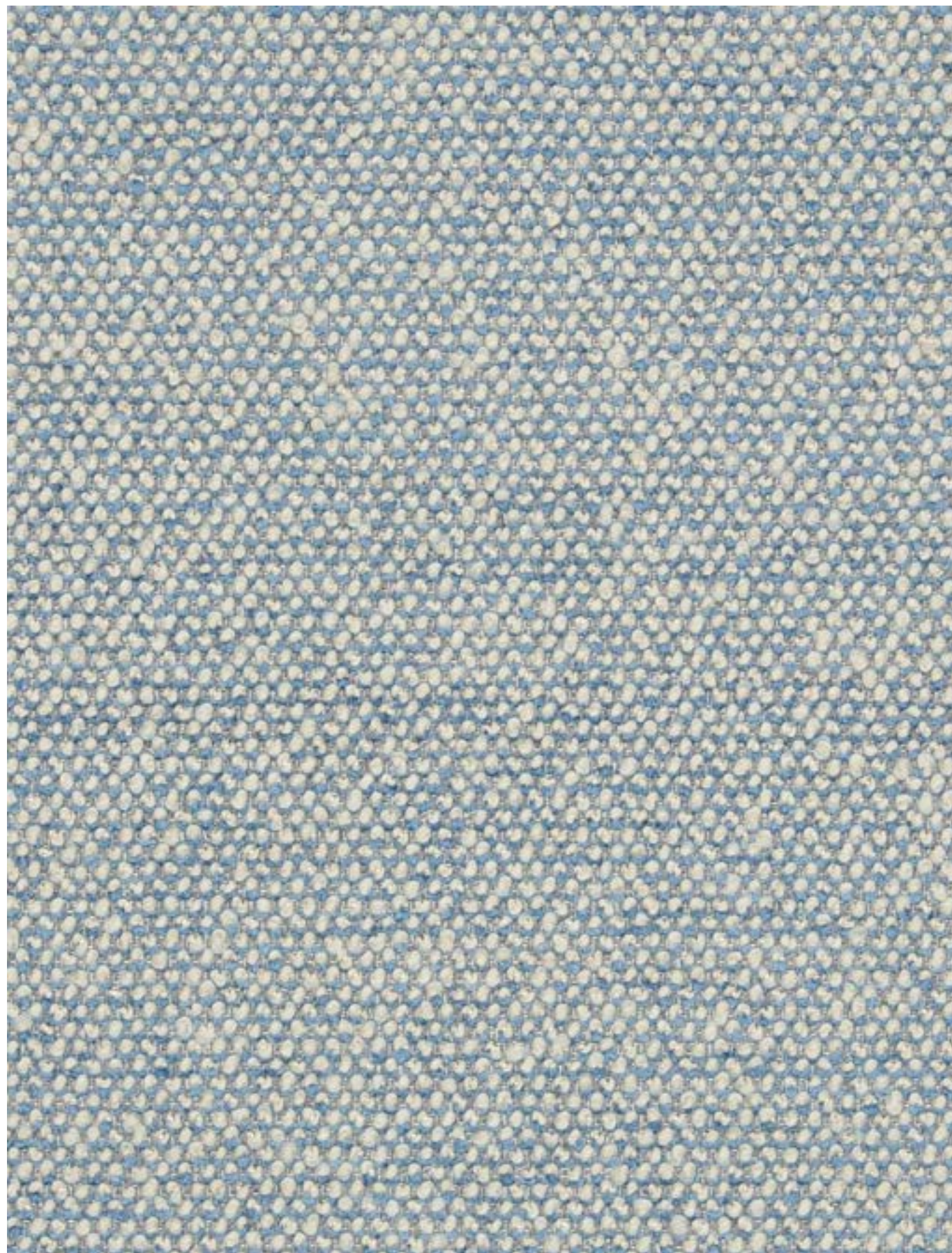


1-1365-091

Safire

Textile

Price category 3
Manufacturer Sacho
Materials 43% Viscose, 17% Polyacrylic,
15% New wool, 9% Cotton, 8% Linen,
8% Polyester
Martindale 40.000
Lightfastness 6
Pilling 3



Safire

Textile

Price category 3
Manufacturer Sacho
Materials 43% Viscose, 17% Polyacrylic,
15% New wool, 9% Cotton, 8% Linen, 8%
Polyester
Martindale 40.000
Lightfastness 6
Pilling 3



001



002



003



004



005



006



007



008



009



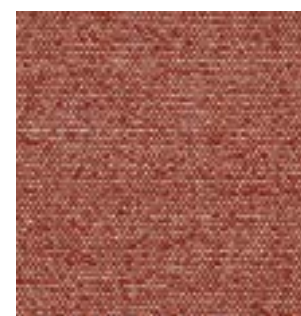
010



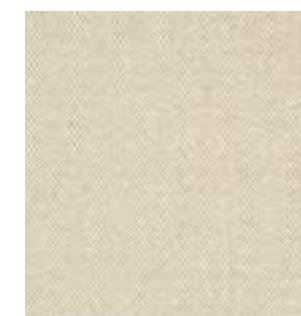
011



012



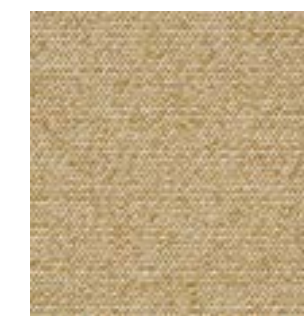
013



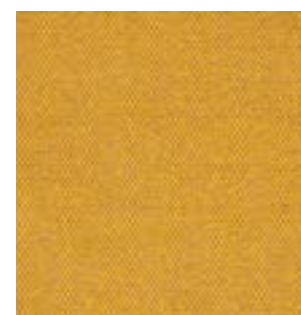
014



015



016



017

4

Textile Category 4

Doppiopanama

Textile

Price category 4
Manufacturer Dedar
Materials 60% Cotton, 35% Polyester
5% Polyamide
Martindale 35.000



Doppiopanama

Textile

Price category 4
Manufacturer Dedar
Materials 60% Cotton, 35% Polyester
5% Polyamide
Martindale 35.000



T14012_001



T14012_002



T14012_003



T14012_004

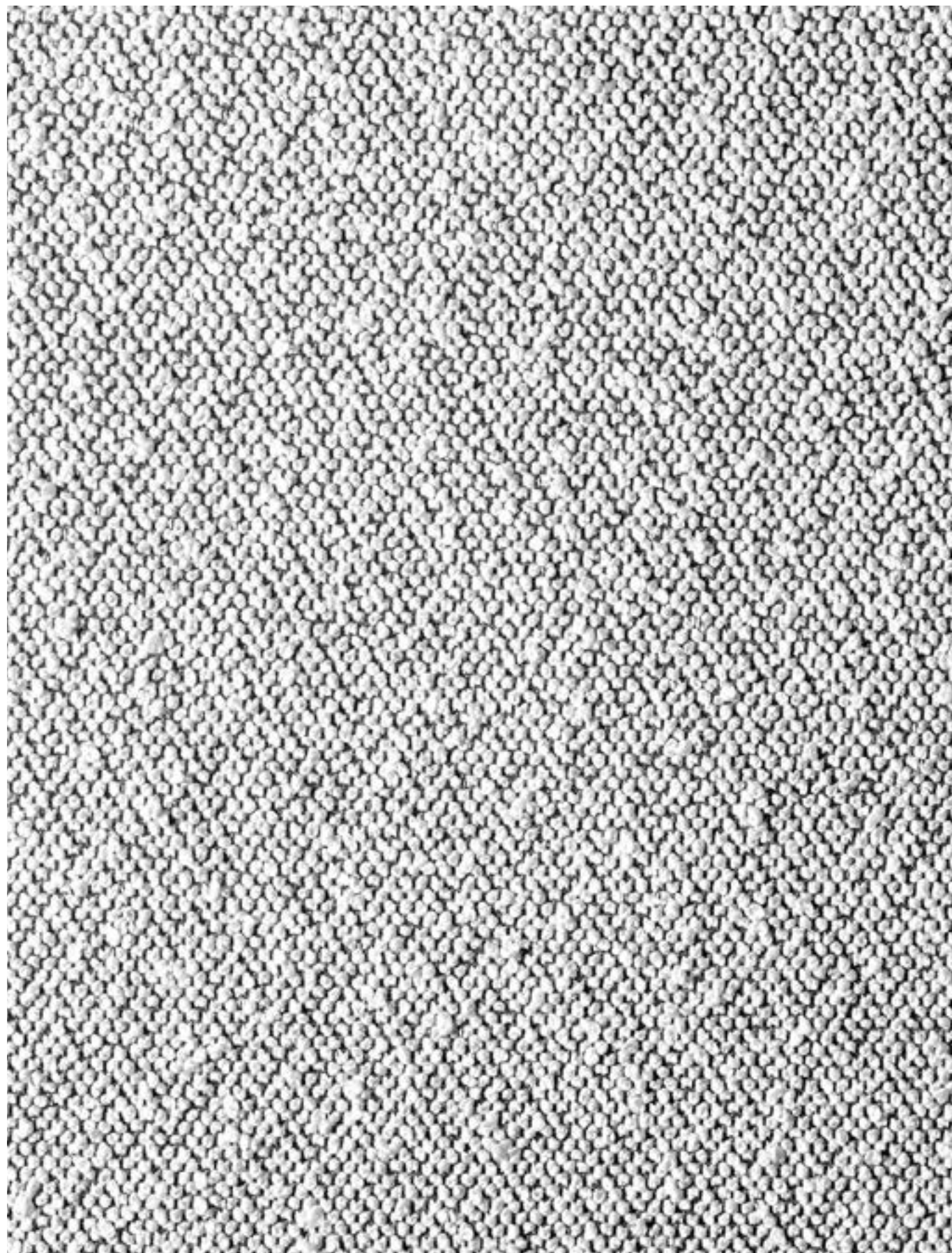


T14012_005

Lupo

Textile

Price category 4
Manufacturer Dedar
Materials 72% Wool, 27% Cotton
1% Polyamide
Martindale 40.000



Lupo

Textile

Price category 4
Manufacturer Dedar
Materials 72% Wool, 27% Cotton
1% Polyamide
Martindale 40.000



T19028_001



T19028_002



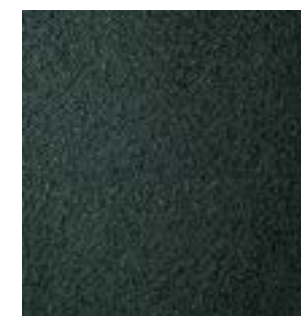
T19028_003



T19028_004



T19028_005



T19028_006



T19028_007



T19028_008



T19028_009

Upholstery Selection & Furniture

The MENU upholstery programme shows an overview of our textile and leather standard programme. All textile and leather collections are available in all colours. Please note that the colour references are only intended as a guide. For further information please see manufacturer websites, or contact your local MENU sales representative.

Selection of textiles or leather outside of our upholstery programme, is subject to final testing and approval. Additional deliverytime may also occur.

sorensenleather.com
kvadrat.com
nevotex.com



Upholstery Selection & Furniture

Use table to determine the upholstery options available for fabric-covered items.

	AFTERROOM COLLECTION	BRASILIA COLLECTION	CAIRN POUF	CO CHAIR CHAIR	EAVE	GODOT	HARBOUR CHAIR	HARBOUR LOUNGE	KNITTING LOUNGE CHAIR	OFFSET	READY DINING CHAIR	TAILOR	TEAROOM
LEATHER													
PRICE CATEGORY 1													
Dakar, Nevotex	•	•		•			•	•	•		•	•	
Ultra, Sørensen Leather	•	•		•			•	•	•		•	•	
PRICE CATEGORY 2													
Dunes, Sørensen Leather	•	•		•			•	•	•		•	•	
Nuance, Sørensen Leather	•	•		•			•	•	•		•	•	
Shade, Sørensen Leather	•	•		•			•	•	•		•	•	
Sheepskin, Nevotex		•							•				
Instill, Artificial Leather, Mahram	•	•		•			•	•	•		•	•	
PRICE CATEGORY 3													
Royal Nubuck, Sørensen Leather	•	•		•			•	•	•		•	•	
PRICE CATEGORY 4													
Elegance, Sørensen Leather	•	•		•				•					

1

Leather Category 1

Dakar

Leather

Price category 1
Manufacturer Nevotex
Materials Aniline leather
Thickness 0.9 - 1.1 mm
Certificate OEKO-TEX®

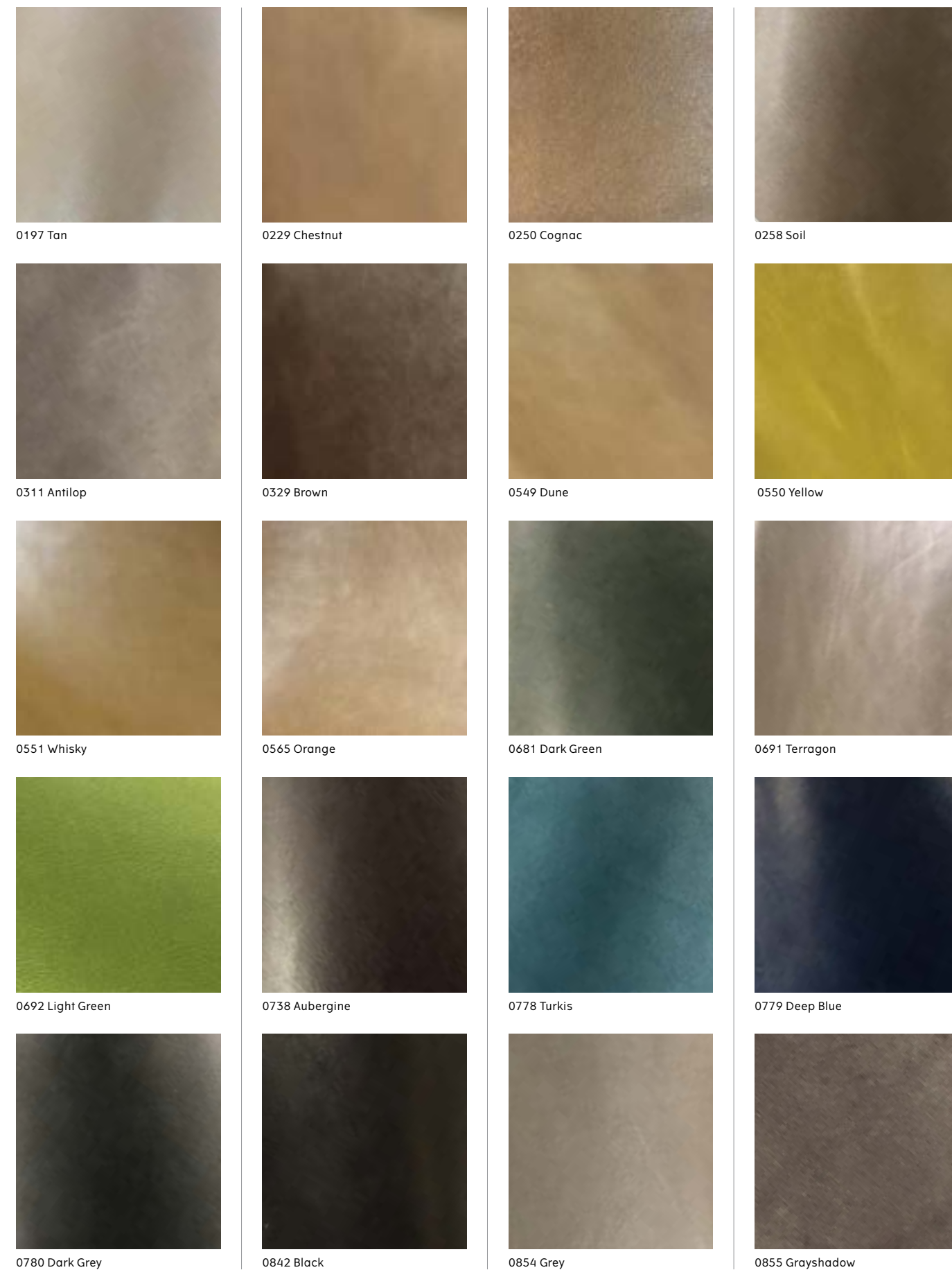


Tailor Sofa, Dark Stained Oak / Dakar 0311, by Rui Alves

Dakar

Leather

Price category 1
Manufacturer Nevotex
Materials Aniline leather
Thickness 0.9 - 1.1 mm
Certificate OEKO-TEX®



Dakar

Leather

Price category 1
Manufacturer Nevotex
Materials Aniline leather
Thickness 0.9 - 1.1 mm
Certificate OEKO-TEX®



01015 White



03009 Ciocco



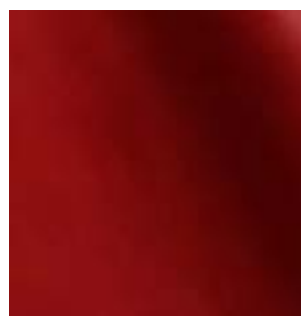
04009 Parrot



04010 Pot-Porry



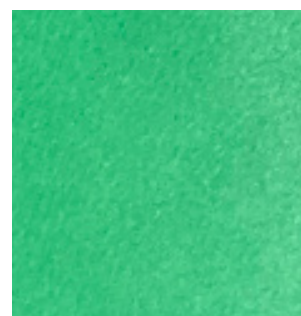
04060 Purple



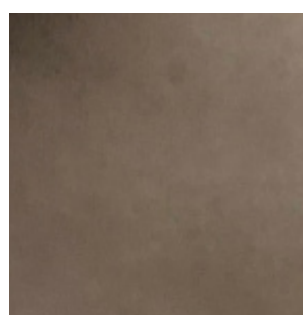
04109 Red



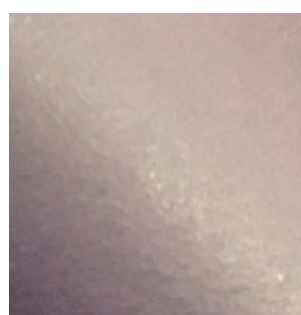
04147 Dark Red



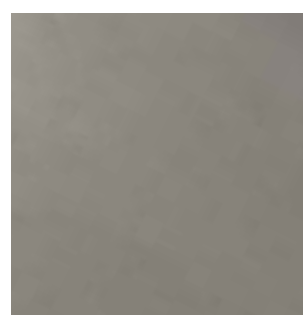
06013 Green



06048 Peatmoos



07008 Dark Purple



08079 Light Grey

Ultra

Leather

Price category 1
Manufacturer Sørensen Leather
Materials Protected leather
Thickness 0.9 - 1.1 mm



Ultra

Leather

Price category 1
Manufacturer Sørensen Leather
Materials Protected leather
Thickness 0.9 - 1.1 mm



Ultra

Leather

Price category 1
Manufacturer Sørensen Leather
Materials Protected leather
Thickness 0.9 - 1.1 mm



Moss - 41569



Oat - 41568



Smoke - 41567

2

Leather Category 2

Dunes

Leather

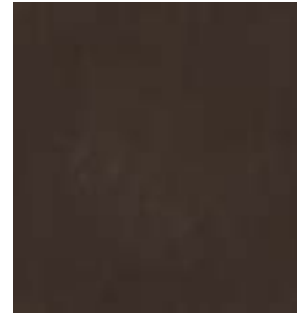
Price category 2
Manufacturer Sørensen Leather
Materials Aniline leather
Thickness 1.1 – 1.3 mm



Dunes

Leather

Price category 2
Manufacturer Sørensen Leather
Materials Aniline leather
Thickness 1.1 – 1.3 mm



Dark Brown



Rust



Camel



Anthrazit



Cognac



Racing Green

Nuance

Leather

Price category 2
Manufacturer Sørensen Leather
Materials Protected leather
Thickness 1.1 - 1.3 mm



Nuance

Leather

Price category 2
Manufacturer Sørensen Leather
Materials Protected leather
Thickness 1.1 - 1.3 mm



Shade

Leather

Price category 2
Manufacturer Sorensen Leather
Materials Protected Aniline leather
Thickness 1.1 - 1.3 mm



Shade

Leather

Price category 2
Manufacturer Sorensen Leather
Materials Protected Aniline leather
Thickness 1.1 - 1.3 mm



Sheepskin

Price category 3
Manufacturer Nevotex
Materials Sheepskin
Thickness 17 - 21mm



Knitting Lounge Chair, Walnut / Sheepskin, Sahara, by Ib Kofod-Larsen

Sheepskin

Price category 3
Manufacturer Nevotex
Materials Sheepskin
Thickness 17 - 21mm



Nature



Sahara

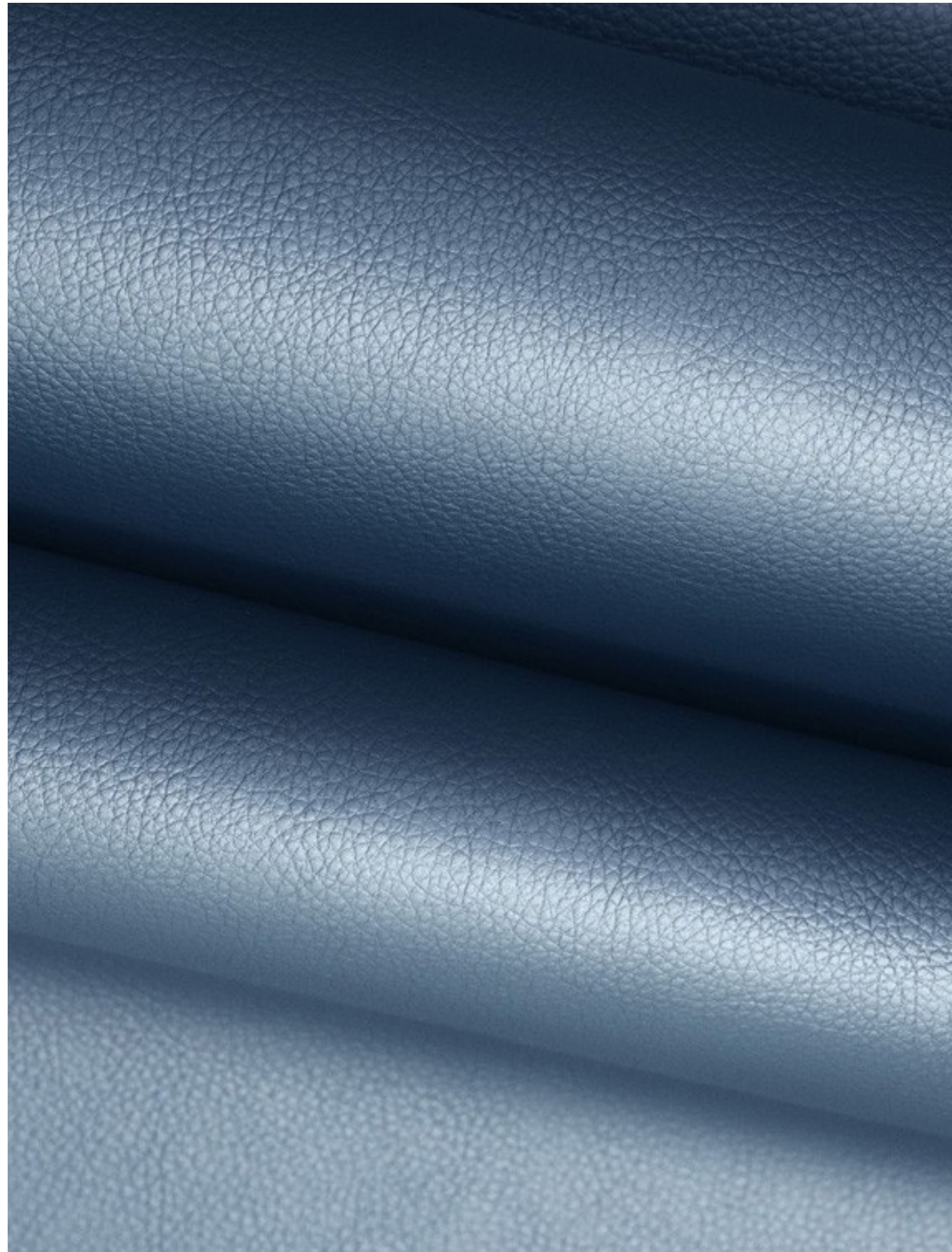


Root

Instill

Artificial leather

Price category 2
Manufacturer Mahram
Materials Artificial leather
Lightfastness 3-6
Pilling 5



*Please note Instill is an artificial leather

Instill

Artificial leather

Price category 2
Manufacturer Mahram
Materials Artificial leather
Lightfastness 3-6
Pilling 5



3

Leather Category 3

Royal Nubuck

Leather

Price category 3
Manufacturer Sørensen Leather
Materials Aniline leather
Thickness 1.2 – 1.6 mm



Harbour Dining Chair, Dark Stained Oak / Royal Nubuck 30253, by Norm Architects

Royal Nubuck

Leather

Price category 3
Manufacturer Sørensen Leather
Materials Aniline leather
Thickness 1.4 – 1.6 mm



4

Leather Category 4

Elegance

Leather

Price category 4
Manufacturer Sørensen Leather
Materials Aniline leather
Thickness 1.2 – 1.4 mm



Elegance

Leather

Price category 4
Manufacturer Sørensen Leather
Materials Aniline leather
Thickness 1.2 – 1.4 mm



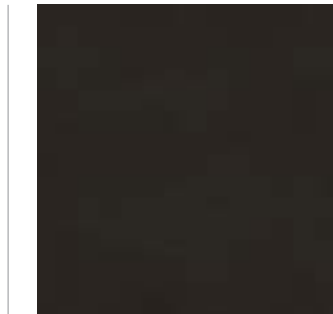
Black - 20198



Indian Red - 20193



Walnut - 20195



Mocca - 20197

Natural Markings On Leather



FAT WRINKLE



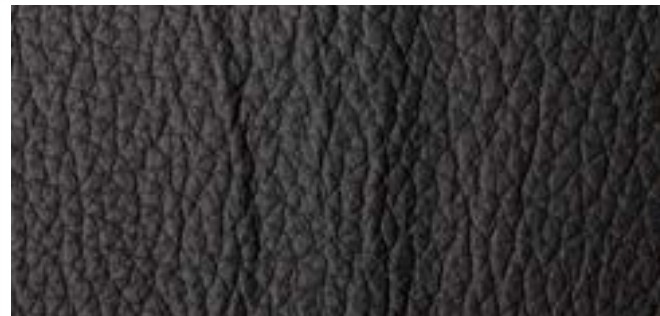
SCAR / INSECT BITES



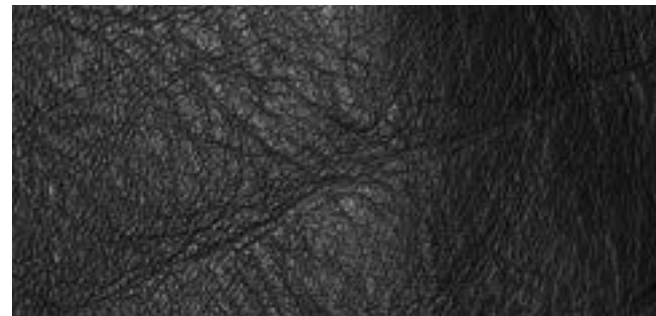
FOLDS



BUTCHING SCAR



HEALED SCARS



FAT WRINKLES

Individual and unique markings may appear on the leather and should not be considered defects.