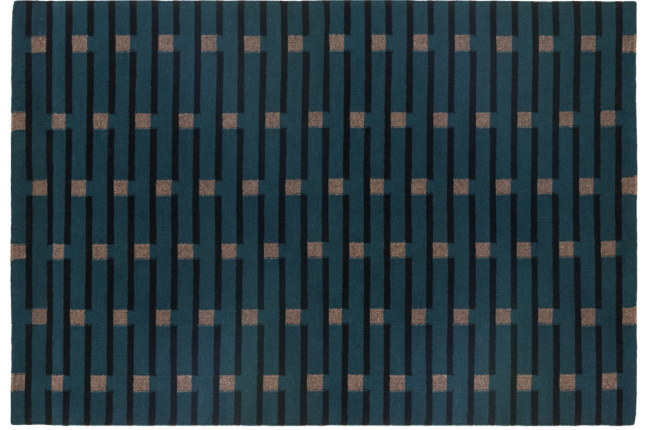
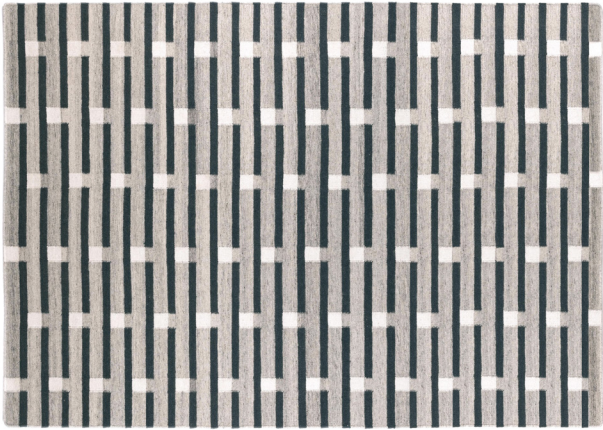


Purlin Rug by Eleanor Pritchard





## Purlin Rug by Eleanor Pritchard

Designed in London and handwoven in India the Purlin Rug features designer Eleanor Pritchard's intricate graphic patterns inspired by London's architectural skyline and draws its name from vernacular architectural roofing structures.

The Purlin design is a pattern of long narrow bars and alternating square blocks arranged in a half-drop repeat pattern resulting in a clean linear design with a pared back feel. With a colour palette based on warm and dark greys, sea greens and petrol blues, the Eleanor Pritchard rug collection beautifully encapsulates the metropolitan aesthetic of London.

Available in three sizes, three colours with a flatweave design.

Made in India.

### Technical / Construction

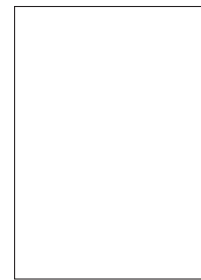
100% rPET

### Dimensions



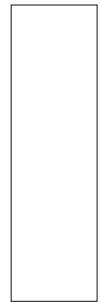
Large Rug

H3000 W2000  
H118" W78.7"



Medium Rug

H2400 W1700  
H94.4" W67"



Runner

H2500 W800  
H98.4" W31.4"

### Available Finishes

#### Flatweave



Flannel  
Grey



Petrol  
Blue



Warm  
Grey