

# Caboche, parete

by Patricia Urquiola , Eliana Gerotto

FOSCARINI



## DESCRIPTION

Rich, bright and sophisticated, the Caboche lamp is a mosaic of refractions, a perfect fusion of different personalities in the one form, coming together to create the body and light effect of the lamp. When it is turned on, the light diffuses from inside the spheres like lots of bright crystals, lighting the surrounding environment. Caboche wall lamp is a jewel of creativity and technology, available in two sizes and two versions: transparent and yellow gold. The lamp is the perfect protagonist for homes or public areas, uniting visual impact with lightness, decorative value and functionality.

## MATERIALS

Polymethylmethacrylate, blown glass and chromed metal

## COLORS

Gold, Trasparent

# Caboche, parete

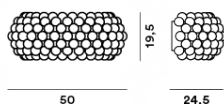
technical details

FOSCARINI

Wall lamp with reflected and diffused light. Acid-etched finish blown glass internal diffuser, external diffuser consisting of polycarbonate arches secured to a chromed metal mount and PMMA spheres. Wall mounting plate and fitting, housing the lighting technology part, made of aluminium color epoxy powder coated die cast zamak.

## Caboche media

### SCHEMATIC & LIGHT EMISSION



### MATERIAL

Polymethylmethacrylate, blown glass  
and chromed metal

### COLORS



### LIGHT SOURCE

120WR7s  
Non dimmerabile

### CERTIFICATIONS



### ENERGY EFFICIENCY

A+, A, C

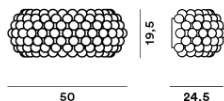
# Caboche, parete

technical details

FOSCARINI

## Caboche media LED

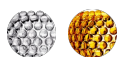
SCHEMATIC & LIGHT EMISSION



MATERIAL

Polymethylmethacrylate, blown glass  
and chromed metal

COLORS



ACCESSORIES

Caboche

LIGHT SOURCE

16W  
2700 K 1360 lm CRI>80

CERTIFICATIONS

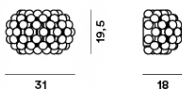


ENERGY EFFICIENCY

A+

## Caboche piccola

SCHEMATIC & LIGHT EMISSION



MATERIAL

Polymethylmethacrylate, blown glass  
and chromed metal

COLORS



LIGHT SOURCE

120WR7s  
Non dimmerabile

CERTIFICATIONS

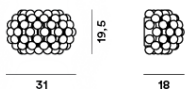


ENERGY EFFICIENCY

A+, A, C

## Caboche piccola LED

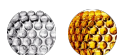
### SCHEMATIC & LIGHT EMISSION



### MATERIAL

Polymethylmethacrylate, blown glass  
and chromed metal

### COLORS



### ACCESSORIES

Caboche

### LIGHT SOURCE

12W  
2700 K 1020 lm CRI>80  
Dimmable with TRIAC technology

### CERTIFICATIONS



### ENERGY EFFICIENCY

A+

# Caboche, parete

Designer

FOSCARINI

## PATRICIA URQUIOLA

An internationally renowned architect and designer, Patricia Urquiola has received multiple major acknowledgements such as the “Designer of the Decade” title from the Home and Häuser magazines, and “Designer of the Year” from Wallpaper, Ad Spain, Elle Decor International and Architektur und Wohnen Magazine.

Some of her projects are exhibited in several museums and collections. Together with Eliana Gerotto, industrial designer, curator of outfits and interior decorator, she has designed Caboche, a precious, luminous emotion that stems from a combination of technology and creativity.



# Caboche, parete

Designer

FOSCARINI

---

ELIANA GEROTTO

A Venetian, she obtained her diploma in Communication Techniques in Milan. She has worked as a graphic designer for the Parisian magazine, Elle, and for the Venice Biennale, while she co-operates with some major Italian brands as image and product consultant.

Her creative entrepreneurship drives her towards ever-differing professional experiences, from interior designs to furnishings and even jewellery. Together with Patricia Urquiola, she has designed Caboche, a precious, luminous emotion that stems from a combination of technology and creativity.

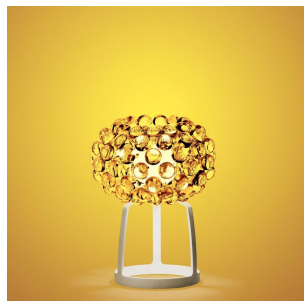


**Caboche, parete**  
family

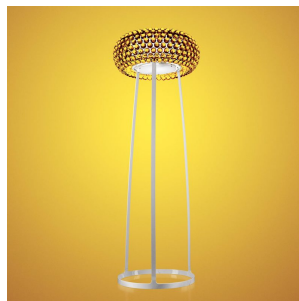
**FOSCARINI**



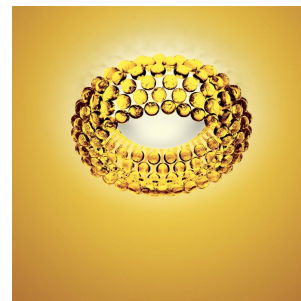
Caboche



Caboche



Caboche



Caboche