

APPLIQUE À VOLET PIVOTANT DOUBLE

Charlotte Perriand

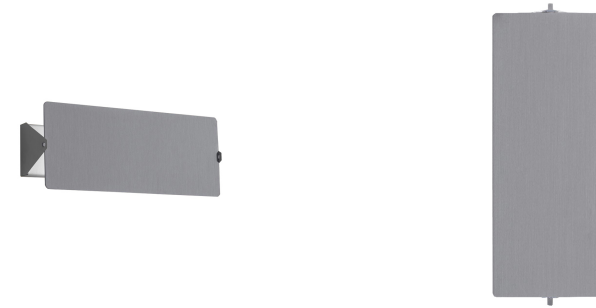
Wall lamps with aluminium adjustable diffuser “volet” and metal structure.

Structure painted in white, diffuser “volet” in natural anodized aluminium, black anodized aluminium or mirror polished stainless steel.

For the small versions E14 and LED versions, the “volet” could be painted in red, yellow or blue.

E14 version is equipped with integrated switch (on board), cable and plug for a simple and free installation.

Indirect light output towards the wall and orientable flood beam.



E14 HALO/FLUO/LED

LAMPING

Source	E14 QT-DE
Total power	2x40W
Emission	indirect orientable
Switching	dimmable according to bulb
Tension	230V
Dimensions	34x13x8
Materials	aluminium
Notes	orientable
Net lamp weight	1,25 kg

Codes

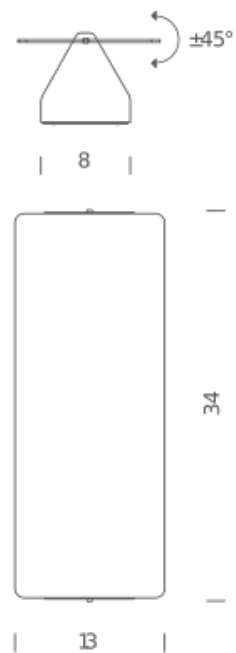
AVP EWD 33
AVP EWN 33
AVP EWH 33

Structure

white/aluminium
white/black
white/inox

PACKAGE

Package 01	Dimension: 16x37x16 cm / Gross weight: 1,75 kg
------------	---



R7S HALO

LAMPING

Source	R7s (75mm)
Total power	2x80W
Emission	indirect orientable
Switching	dimnable
Tension	230V
Materials	aluminium
Notes	orientable
Net lamp weight	1,25 kg

Codes

AVP HWD 33
AVP HWN 33
AVP HWH 33

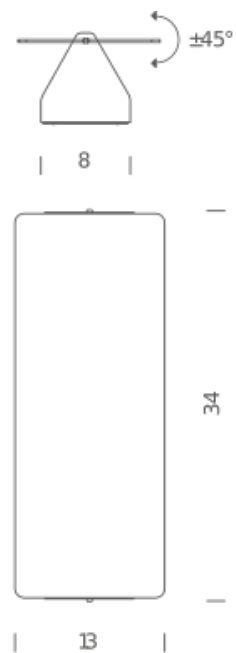
Structure

white/aluminium
white/black
white/inox

PACKAGE

Package 01

Dimension: 16x37x16 cm / Gross weight:
1,75 kg



LED

LAMPING

Source	LED board
Total power	20W
Emission	indirect orientable
Tension	110/230V
Color temperature	3000K
Luminous flux	585lm (luminous output)
Typ cri	83
Energy class	A+
Materials	aluminium
Notes	orientable
Net lamp weight	1,25 kg

Codes

AVP LWD 33	white/aluminium
AVP LWN 33	white/black
AVP LWH 33	white/inox
AVP LWW 33	white/white
AVP LWR 33	white/red
AVP LWG 33	white/yellow
AVP LWB 33	white/blue

PACKAGE

Package 01	Dimension: 16x37x16 cm / Gross weight: 1,75 kg
------------	---

