



POT™

We are pleased to reintroduce the Pot™ lounge chair designed by Arne Jacobsen. The chair was created along with the Egg™ and the Swan™ for the SAS Royal Hotel in Copenhagen in 1959. Today, the lounge chair is relaunched with the purpose of complementing contemporary interiors with yet another 50s design from Arne Jacobsen.



REPUBLIC OF **Fritz Hansen**®

CONTEMPORARY 50s DESIGN FROM ARNE JACOBSEN

In 1959 Arne Jacobsen created Gryden™ - in English meaning the Pot™ - a light take on an embrace lounge chair and originally designed for the SAS Royal Hotel in Copenhagen. With the relaunch of the Pot we aim to revitalise another Arne Jacobsen signature sculpture for the modern interior. One that works as beautifully standing alone in a home lounge setting as it does arranged in pairs in a welcoming cocktail bar or the informal meeting room.

The shape is the same as the original design from 1959 - the seat and materials have been improved to meet today's standards for comfort and durability. The Pot comes in an endless variety of fabrics and leathers. It is small yet embrace, it is modern yet timeless and it is an Arne Jacobsen original.

Originally the Pot decorated both the SAS Royal Hotel's sophisticated Orchid bar and the astonishing winter garden. The chair too was found on every floor in the hotel across from the elevators, greeting guests with a recognisable meeting point. Needless to say, the Pot chair inhabited the hotel as much as its design icon siblings, the Egg™ and the Swan™.

The relaunched Pot chair is suitable for both private and contract use based on its renewed durability and timeless quality, both characteristics of the Fritz Hansen way of manufacturing and the Arne Jacobsen way of designing.

DESIGN

Arne Jacobsen, 1959.



ARNE JACOBSEN 1902-1971

"If I have a philosophy, it must be to sit at my drawing board."

The collaboration between Arne Jacobsen and Fritz Hansen dates back to 1934. It was not until 1952 however, that the team got its breakthrough with the An™. It was succeeded by Series 7™ in 1955, thereby enabling both Jacobsen and Fritz Hansen to write their names into furniture history.

Arne Jacobsen was incredibly productive, both as an architect and a designer. At the end of the 1950s he designed the SAS Royal Hotel in Copenhagen, also designing the Egg™, the Swan™, the Swan Sofa™ and Series 3300™ for the same project.



UPHOLSTERY

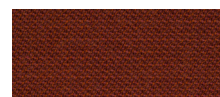
The Pot™ comes in 3 new Fritz Hansen Colours created exclusively by our own design team: serene pale pink, warm and earthy terracotta orange and finally deep ocean blue.

Like the Series 7™, the Pot chair is sewn with a piping. Furthermore, we have improved the foam used for the shell to which the chosen fabric or leather upholstery is glued.

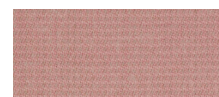
The 3 new Fritz Hansen Colours are:



BLUE
FABRIC: FH 6001



ORANGE
FABRIC: FH 5901



PINK
FABRIC: FH 5801

The Pot is also available in the following fabrics and leather types:

Fabrics: Canvas, Capture, Diablo, Fame, Tonus, Divina, Divina Melange, Divina MD, Fiord, Hallingdal, Steelcut, Steelcut Trio, Sunniva and Comfort.

Leathers: Basic, Classic, Elegance, Sense, White, Optical White, Rustic and Natural.

BASE

The base for the Pot™ comes in chromed steel or in dark brown powder coated steel.



CHROMED STEEL

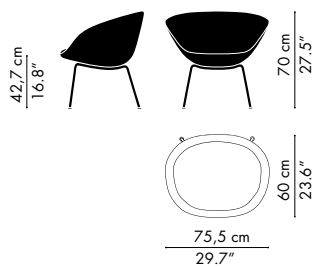


DARK BROWN POWDER COATED STEEL

VARIATIONS & DIMENSIONS

3318

THE MEASUREMENTS CAN VARY +/- 5 %



WARRANTY

A five-year warranty against manufacturing defects in standard products (materials and workmanship). Wear, tear and damage to the product are not covered under this warranty. Claims from end users under the guarantee must be submitted to the vendor from whom the product was purchased. All measurements are indicative.

Standard warranty: 5 years

My Republic Extended Warranty:

5 years: Fabric, Lacquered base, Leather: Basic.

10 years: Chromed base, Shell, Leather: Classic, Elegance, Sense, White, Optical White, Rustic, Natural.



ENVIRONMENTAL PRODUCT INFORMATION

Lounge chair for lounge and waiting areas and private use.

MATERIALS

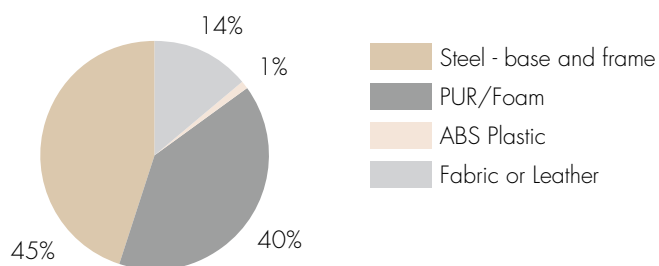
The shell is made of a combination of moulded hard and soft (MDI) polyurethane foam, reinforced with metal frame and with glass fiber enforcement edges.

The base is made of bent steel tubes which are either chromed or powder coated. Glides, cover cap and spacers are made of plastic.

Materials in %

The below figures illustrate the weight allocation between the different materials used. Items with a weight <1% of the total product weight are not included in the figures below. The upholstery percentage may vary depending on the upholstery type.

Model 3318:



PACKAGING MATERIAL

The chair is covered with a plastic bag and shipped in cardboard box, padded with EPS protection pads. All packaging material can be recycled.

REPAIR, DISPOSAL AND REUSE

In the case of disposal the chair can be disassembled into different parts (shell and legs) for recycling, special handling and repair. The shell requires special handling because of the embedded steel frame. PUR foam and steel frame must be manually separated. PUR foam is waste. The legs and all other metal parts can be recycled. Check local regulations for recycling in your area and whether there is potential for reuse.

MANUFACTURING PROCESSES

Suppliers

Before Fritz Hansen enters into a cooperation with a supplier, their environmental stance is examined as part of the company's quality and environmental management systems.

Chromium-plating

Trivalent chrome (Chrome III) is used for the chromium-plating in a closed circuit in order to recycle the process water. The chromium-plating is intended to ensure the metals a long lifetime.

Metals

Production scrap steel is collected for recycling.

Foam

Remnants from foam production are granulated, wherever possible, for recycling.

Plastic

Plastic components are identified with a recycling code whenever possible to facilitate the return of the materials to the recycling stream.

Glue

Glue used for upholstery is water based.

MANAGEMENT SYSTEMS

Environmental Systems

We are aware of our environmental responsibilities. Therefore, in the autumn of 2004 Fritz Hansen obtained the ISO 14001:2015 certification in the environmental management system. The certification is a guarantee to our customers and the authorities that we comply with the requirements of the ISO 14001 standard.

Quality System

Fritz Hansen is also certified according to the quality system ISO 9001:2015.

Employee Health and Safety

Fritz Hansen aims at meeting or exceeding OSHA standards.

LONG LIFETIME

A long lifetime of a piece of furniture is an important environmental factor. Fritz Hansen aims to obtain a long lifetime through timeless design and strict requirements for strength and durability. The chair complies with the requirements for EN 16139 - Test Level L1, general contract use.

MORE INFORMATION

Please visit www.fritzhansen.com for additional environmental information and to download our Perspective on Sustainability & Corporate Environmental Policy.

