

# Fabric & Leather Overview

*Recommended by &Tradition*



**&Tradition®**

# Index

*Please click the fabric name to go to the fabric page directly.*

## Fabric

Brand	Fabric name		
<b>Kvadrat</b>	Balder*	Hallingdal*	Sonar
	Canvas*	Harald*	Steelcut*
	Clay*	Hero*	Steelcut Trio*
	Colline*	Maple	Sunniva*
	Divina*	Moss*	Tonus*
	Divina MD*	Nitto*	Twill Weave*
	Divina Melange*	Planum*	Uniform Melange*
	Duke*	Relate*	Vidar*
	Fiord*	Remix*	Zero*
	Fuse*	Re-Wool*	
	Gentle*	Ria*	
<b>Dedar</b>	Atelier Moderne	Karakorum	Serafino
	Atlas	Karandash	Svevo
	Campus	Nouvelles Vagues	
<b>Romo</b>	Chelsea	Loop*	Ruskin*
	Linara	Orion*	
<b>Nevotex</b>	Ritz*	Ritz Trend*	
<b>&amp;Tradition</b>	Velvet*		
<b>JAB</b>	Hot Madison*		
<b>Scandilock</b>	Sheepskin		

## Leather

Brand	Fabric name		
<b>CA-MO Leathers</b>	Regina	Silk	Sydney
<b>Elmo Leather</b>	Baltique	Rustical	Soft
<b>Peneloppi Oggi</b>	Nabuk		
<b>Sørensen Leather</b>	Sørensen Duet		

\* Contract-friendly fabrics

# *Fabric*

Fabric gr. 3

# Balder

\* Click [here](#) to see all available colours.

\* Due to variations in screen calibration, the fabrics shown here may not be 100% true to colour.

**Brand**

Kvadrat

**Composition**

68% new wool  
26% cotton  
6% nylon

**Durability**

100,000 Martindale

**Pilling**

4 (ISO 1-5)

**Lightfastness**

6

**Warranty**

10 years

**Produced In**

Norway

**Sustainability**

Greenguard Gold,  
HPD, EPD

**Width**

Approx. 140 cm  
(Approx. 55")

**Weight**

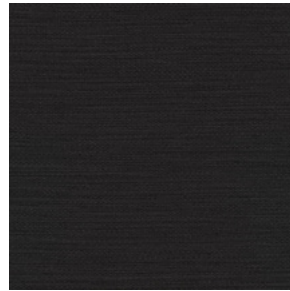
685 g/lin. m  
(22.09 oz/ly)

**Fire Test**

- AS/NZS 1530.3
- BS 5852 crib 5 with treatment
- BS 5852 part 1
- IMO FTP Code 2010 Part 8
- NFPA 260
- UNI 9175 11M
- US Cal. Bull. 117-2013
- EN 1021-1/2
- AS/NZS 3837 class 2
- ÖNORM B1/Q1



0382



0192



0692

**Available on**

**Catch**

JH1, JH2,  
JH15, JH13,  
JH14, JH16,  
JH17

**Elefy**

JH29, JH31,  
JH33, JH35,  
JH37

**In Between**

SK2, SK8,  
SK10

**Pavilion**

AV3, AV4,  
AV12, AV13,  
AV6, AV11,  
AV8, AV14,  
AV10, AV15

**Rely**

HW7-10,  
HW12-15,  
HW17-20,  
HW22-25,  
HW29-32,  
HW35-37,  
HW40-42,  
HW45-47,  
HW50-52,  
HW55-57,  
Seat pad

**Betty**

TK3

**Boomerang**

HM1, HM2

**Loafer**

SC24, SC23,  
SC25, SC26

**Margas**

LC1, LC2,  
LC3

**Mayor**

AJ5, AJ6

**Cloud**

LN1, LN2,  
LN3.2, LN5,  
LN6, LN7

**Develius**

EV1-EV7

**Fly**

SC1, SC2,  
SC3, SC12,  
SC9, SC10

[BACK TO INDEX](#)

Fabric gr. 1

# Canvas

\* Click [here](#) to see all available colours.

\* Due to variations in screen calibration, the fabrics shown here may not be 100% true to colour.

**Brand**

Kvadrat

**Composition**

90% new wool worsted  
10% nylon

**Durability**

100,000 Martindale

**Pilling**

4 (ISO 1-5)

**Lightfastness**

5-6

**Warranty**

10 years

**Produced In**

United Kingdom

**Sustainability**

EU Ecolabel,  
Greenguard Gold,  
HPD, EPD

**Width**

Approx. 140 cm  
(Approx. 55")

**Weight**

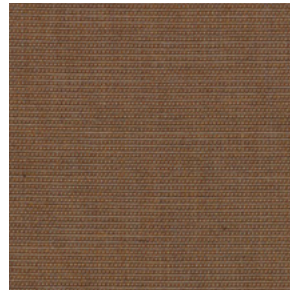
480 g/lin. m  
(15.48 oz/ly)

**Fire Test**

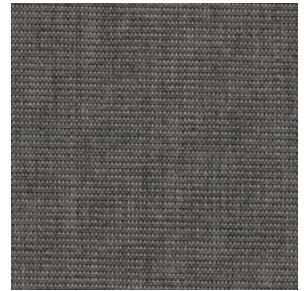
- AS/NZS 1530.3
- BS 5852 crib 5 with treatment
- BS 5852 ignition source 3
- BS 5852 part 1
- IMO FTP code 2010 Part 8
- NF D 60 013
- NFPA 260
- SN 198 898 5.3 with treatment
- UNI 9175 1IM
- US Cal. Bull. 117-2013
- EN 1021-1/2
- ÖNORM B1/Q1



0356



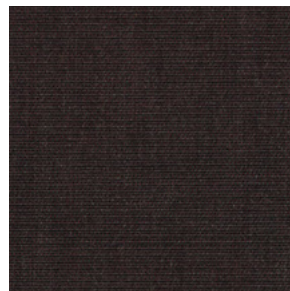
0254



0134



0794



0374



0996

**Available on**

**Catch**

JH1, JH2,  
JH15, JH13,  
JH14, JH16,  
JH17

**Elefy**

JH29, JH31,  
JH33, JH35,  
JH37

**In Between**

SK2, SK8,  
SK10

**Pavilion**

AV3, AV4,  
AV12, AV13,  
AV6, AV11,  
AV8, AV14,  
AV10, AV15

**Rely**

HW7-10,  
HW12-15,  
HW17-20,  
HW22-25,  
HW29-32,  
HW35-37,  
HW40-42,  
HW45-47,  
HW50-52,  
HW55-57,  
Seat pad

**Betty**

TK3

**Boomerang**

HM1, HM2

**Wulff**

ATD2, ATD3

**Margas**

LC1, LC2,  
LC3

**Loafer**

SC24, SC23,  
SC25, SC26

**Mayor**

AJ5, AJ6

**Cloud**

LN1, LN2,  
LN3.2, LN5,  
LN6, LN7

**Develius**

EV1-EV7

**Isole**

NN1A-  
NN1G

**Fly**

SC1, SC2,  
SC3, SC12,  
SC9, SC10

[BACK TO INDEX](#)

Fabric gr. 3

# Clay

\* Click [here](#) to see all available colours.

\* Due to variations in screen calibration, the fabrics shown here may not be 100% true to colour.

**Brand**

Kvadrat

**Composition**

76% linen  
21% cotton  
3% polyester

**Durability**

45,000 Martindale

**Pilling**

4 (ISO 1-5)

**Lightfastness**

5

**Warranty**

2 years

**Produced In**

Turkey

**Sustainability**

Greenguard Gold,  
HPD, EPD

**Width**

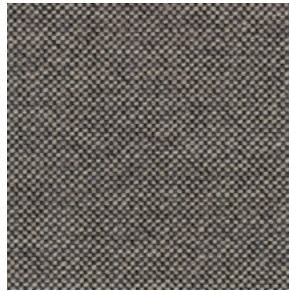
140 cm (55")

**Weight**

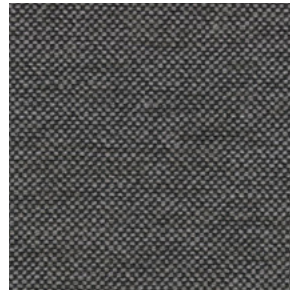
768 g/lin. m  
(24.77 oz/ly)

**Fire Test**

- BS 5852 crib 5 with treatment
- BS 5852 part 1
- EN 1021-1/2



0009



0013



0014

**Available on**

**Catch**

JH1, JH2,  
JH15, JH13,  
JH14, JH16,  
JH17

**Elefy**

JH29, JH31,  
JH33, JH35,  
JH37

**In Between**

SK2, SK8,  
SK10

**Pavilion**

AV3, AV4,  
AV12, AV13,  
AV6, AV11,  
AV8, AV14,  
AV10, AV15

**Rely**

HW7-10,  
HW12-15,  
HW17-20,  
HW22-25,  
HW29-32,  
HW35-37,  
HW40-42,  
HW45-47,  
HW50-52,  
HW55-57,  
Seat pad

**Betty**

TK3

**Margas**

LC1, LC2,  
LC3

**Cloud**

LN1, LN2,  
LN3.2, LN5,  
LN6, LN

**Develius**

EV1-EV7



Fabric gr. 3

# Colline

\* Click [here](#) to see all available colours.

\* Due to variations in screen calibration, the fabrics shown here may not be 100% true to colour.

**Brand**

Kvadrat

**Composition**

75% new wool worsted  
17% polyacrylic  
8% nylon

**Durability**

100,000 Martindale

**Pilling**

4-5 (ISO 1-5)

**Lightfastness**

7

**Warranty**

10 years

**Produced In**

United Kingdom

**Sustainability**

Greenguard Gold,  
HPD, EPD

**Width**

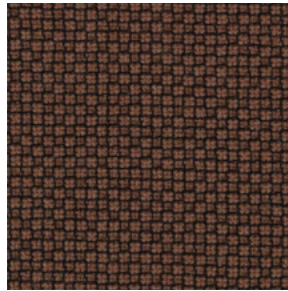
Approx. 140 cm  
(approx. 55")

**Weight**

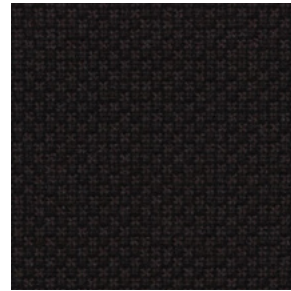
650 g/lin. m  
(20.97 oz/ly)

**Fire Test**

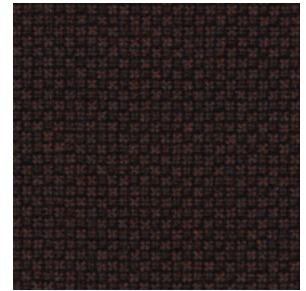
- AS/NZS 1530.3
- IMO FTP Code 2010 Part 8
- US Cal. Bull. 117-2013
- BS 5852 part 1
- UNI 9175 1IM
- EN 1021-1/2
- BS 5852 crib 5 with treatment



0347



0397



0677

**Available on**

**Catch**

JH1, JH2,  
JH15, JH13,  
JH14, JH16,  
JH17

**Elefy**

JH29, JH31,  
JH33, JH35,  
JH37

**In Between**

SK2, SK8,  
SK10

**Pavilion**

AV3, AV4,  
AV12, AV13,  
AV6, AV11,  
AV8, AV14,  
AV10, AV15

**Rely**

HW7-10,  
HW12-15,  
HW17-20,  
HW22-25,  
HW29-32,  
HW35-37,  
HW40-42,  
HW45-47,  
HW50-52,  
HW55-57,  
Seat pad

**Betty**

TK3

**Boomerang**

HM1, HM2

**Loafer**

SC24, SC23,  
SC25, SC26

**Mayor**

AJ5, AJ6

**Cloud**

LN1, LN2,  
LN3.2, LN5,  
LN6, LN7

**Develius**

EV1-EV7

**Fly**

SC1, SC2,  
SC3, SC12,  
SC9, SC10

Fabric gr. 2

# Divina

\* Click [here](#) to see all available colours.

\* Due to variations in screen calibration, the fabrics shown here may not be 100% true to colour.

**Brand**

Kvadrat

**Composition**

100% new wool

**Durability**

45,000 Martindale

**Pilling**

3 (ISO 1-5)

**Lightfastness**

5-6

**Warranty**

10 years

**Produced In**

United Kingdom

**Sustainability**

EU Ecolabel,  
Greenguard Gold,  
HPD, EPD

**Width**

Approx. 150 cm (approx. 59")

**Weight**

840 g/lin. m (27.09 oz/ly)

**Fire Test**

- AS/NZS 1530.3
- BS 5852 Crib 5
- BS 5852 part 1
- BS 5867 part 2 type B
- IMO FTP Code 2010 Part 8
- NF D 60 013
- NFPA 260
- SN 198 898 5.3 with treatment
- UNI 9175 1IM
- US Cal. Bull. 117-2013
- EN 1021-1/2
- EN 13501, C-s1, d0, glued
- NFPA 701 with treatment
- ASTM E84 Class B Unadhered
- ASTM E84 Class A Adhered
- ÖNORM B1/Q1
- GB 50222 B1 with treatment (Chinese)



0671



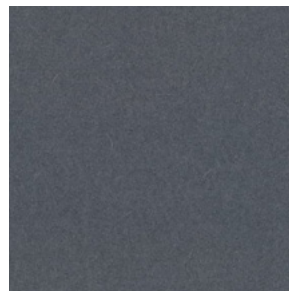
0562



0876



0984



0154

**Available on**

**Catch**

JH1, JH2,  
JH15, JH13,  
JH14, JH16,  
JH17

**Elefy**

JH29, JH31,  
JH33, JH35,  
JH37

**In Between**

SK2, SK8,  
SK10

**Pavilion**

AV3, AV4,  
AV12, AV13,  
AV6, AV11,  
AV8, AV14,  
AV10, AV15

**Rely**

HW7-10,  
HW12-15,  
HW17-20,  
HW22-25,  
HW29-32,  
HW35-37,  
HW40-42,  
HW45-47,  
HW50-52,  
HW55-57,  
Seat pad

**Betty**

TK3

**Boomerang**

HM1, HM2

**Loafer**

SC24, SC23,  
SC25, SC26

**Margas**

LC1, LC2,  
LC3

**Mayor**

AJ5, AJ6

**Cloud**

LN1, LN2,  
LN3.2, LN5,  
LN6, LN7

**Develius**

EV1-EV7

**Fly**

SC1, SC2,  
SC3, SC12,  
SC9, SC10

[BACK TO INDEX](#)



Fabric gr. 2

# Divina MD

\* Click [here](#) to see all available colours.

\* Due to variations in screen calibration, the fabrics shown here may not be 100% true to colour.

**Brand**

Kvadrat

**Composition**

100% new wool

**Durability**

45,000 Martindale

**Pilling**

3 (ISO 1-5)

**Lightfastness**

5-6 (ISO 1-8)

**Warranty**

10 years

**Produced In**

United Kingdom

**Sustainability**

EU Ecolabel,  
Greenguard Gold,  
HPD, EPD

**Width**

Approx. 150 cm (approx. 59")

**Weight**

840 g/lin. m (27.09 oz/ly)

**Fire Test**

- AS/NZS 1530.3
- BS 5852 Crib 5
- BS 5852 part 1
- BS 5867 part 2 type B
- IMO FTP Code 2010 Part 8
- NF D 60 013
- NFPA 260
- SN 198 898 5.3 with treatment
- UNI 9175 11M
- US Cal. Bull. 117-2013
- EN 1021-1/2
- EN 13501, C-s1, d0, glued
- NFPA 701 with treatment
- ASTM E84 Class B Unadhered
- ASTM E84 Class A Adhered
- ÖNORM B1/Q1
- GB 50222 B1 with treatment (Chinese)



0363



0203

**Available on**

**Catch**

JH1, JH2,  
JH15, JH13,  
JH14, JH16,  
JH17

**Elefy**

JH29, JH31,  
JH33, JH35,  
JH37

**In Between**

SK2, SK8,  
SK10

**Pavilion**

AV3, AV4,  
AV12, AV13,  
AV6, AV11,  
AV8, AV14,  
AV10, AV15

**Rely**

HW7-10,  
HW12-15,  
HW17-20,  
HW22-25,  
HW29-32,  
HW35-37,  
HW40-42,  
HW45-47,  
HW50-52,  
HW55-57,  
Seat pad

**Betty**

TK3

**Boomerang**

HM1, HM2

**Loafer**

SC24, SC23,  
SC25, SC26

**Margas**

LC1, LC2,  
LC3

**Mayor**

AJ5, AJ6

**Cloud**

LN1, LN2,  
LN3.2, LN5,  
LN6, LN7

**Develius**

EV1-EV7

**Fly**

SC1, SC2,  
SC3, SC12,  
SC9, SC10

[BACK TO INDEX](#)

Fabric gr. 2

# Divina Melange

\* Click [here](#) to see all available colours.

\* Due to variations in screen calibration, the fabrics shown here may not be 100% true to colour.

**Brand**

Kvadrat

**Composition**

100% new wool

**Durability**

45,000 Martindale

**Pilling**

3 (ISO 1-5)

**Lightfastness**

6-7

**Warranty**

10 years

**Produced In**

United Kingdom

**Sustainability**

EU Ecolabel,  
Greenguard Gold,  
HPD, EPD

**Width**

Approx. 150 cm (approx. 59")

**Weight**

840 g/lin. m (27.09 oz/ly)

**Fire Test**

- AS/NZS 1530.3
- BS 5852 Crib 5
- BS 5852 part 1
- BS 5867 part 2 type B
- IMO FTP Code 2010 Part 8
- NF D 60 013
- NFPA 260
- SN 198 898 5.3 with treatment
- UNI 9175 11M
- US Cal. Bull 117-2012
- EN 1021-1/2
- EN 13501, C-s1,, d0, glued
- Chinese GB 50222 B1 with treatment
- ÖNORM B1/Q1
- NFPA 701 with treatment
- ASTM E84 Class B Unadhered
- ASTM E84 Class A Adhered



0170



0280

**Available on**

**Catch**

JH1, JH2,  
JH15, JH13,  
JH14, JH16,  
JH17

**Elefy**

JH29, JH31,  
JH33, JH35,  
JH37

**In Between**

SK2, SK8,  
SK10

**Pavilion**

AV3, AV4,  
AV12, AV13,  
AV6, AV11,  
AV8, AV14,  
AV10, AV15

**Rely**

HW7-10,  
HW12-15,  
HW17-20,  
HW22-25,  
HW29-32,  
HW35-37,  
HW40-42,  
HW45-47,  
HW50-52,  
HW55-57,  
Seat pad

**Betty**

TK3

**Boomerang**

HM1, HM2

**Loafer**

SC24, SC23,  
SC25, SC26

**Mayor**

AJ5, AJ6

**Margas**

LC1, LC2,  
LC3

**Cloud**

LN1, LN2,  
LN3.2, LN5,  
LN6, LN7

**Develius**

EV1-EV7

**Fly**

SC1, SC2,  
SC3, SC12,  
SC9, SC10

[BACK TO INDEX](#)

Fabric gr. 2

# Duke

\* Click [here](#) to see all available colours.

\* Due to variations in screen calibration, the fabrics shown here may not be 100% true to colour.

**Brand**

Kvadrat

**Composition**

70% viscose  
15% cotton  
8% polyester  
7% polyacrylic

**Durability**

70,000 Martindale

**Pilling**

4-5 (ISO 1-5)

**Lightfastness**

5 (ISO 1-8)

**Warranty**

2 years

**Produced In**

Italy

**Width**

140 cm (55")

**Weight**

640 g/lin. m  
(20.64 oz/ly)

**Fire Test**

• BS 5852 crib 5 with treatment



006



0014



0001

**Available on**

**Catch**

JH1, JH2,  
JH15, JH13,  
JH14, JH16,  
JH17

**Elefy**

JH29, JH31,  
JH33, JH35,  
JH37

**In Between**

SK2, SK8,  
SK10

**Pavilion**

AV3, AV4,  
AV12, AV13,  
AV6, AV11,  
AV8, AV14,  
AV10, AV15

**Rely**

HW7-10,  
HW12-15,  
HW17-20,  
HW22-25,  
HW29-32,  
HW35-37,  
HW40-42,  
HW45-47,  
HW50-52,  
HW55-57,  
Seat pad

**Betty**

TK3

**Boomerang**

HM1, HM2

**Loafer**

SC24, SC23,  
SC25, SC26

**Margas**

LC1, LC2,  
LC3

**Mayor**

AJ5, AJ6

**Cloud**

LN1, LN2,  
LN3.2, LN5,  
LN6, LN7

**Develius**

EV1-EV7

**Fly**

SC1, SC2,  
SC3, SC12,  
SC9, SC10

Fabric gr. 2

# Fiord

\* Click [here](#) to see all available colours.

\* Due to variations in screen calibration, the fabrics shown here may not be 100% true to colour.

**Brand**

Kvadrat

**Composition**

92% new wool worsted

8% nylon

**Durability**

60,000 Martindale

**Pilling**

4-5 (ISO 1-5)

**Lightfastness**

6

**Warranty**

10 years

**Produced In**

Norway

**Sustainability**

EU Ecolabel,

Greenguard Gold,

HPD, EPD

**Width**

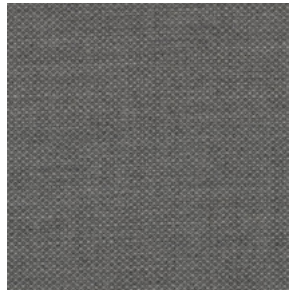
Approx. 140 cm (Approx. 55")

**Weight**

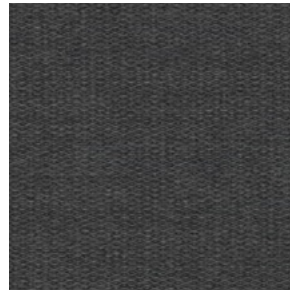
500 g/lin. m (16.13 oz/ly)

**Fire Test**

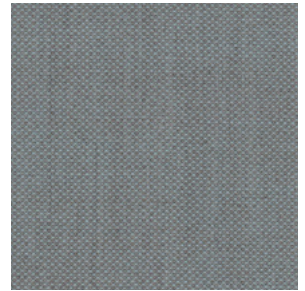
- BS 5852 crib 5 with treatment
- BS 5852 part 1
- IMO FTP Code 2010 Part 8
- NF D 60 013
- NFPA 1260
- SN 198 898 5.3 with treatment
- UNI 9175 1IM
- US Cal. Bull 117-2013
- EN 1021-1/2
- ASTM E84 Class A Adhered
- ASTM E84 Class A Unadhered
- AS/NZS 3837 class 2
- GB 50222 B1 with treatment (Chinese)
- ÖNORM B1/Q1



0151



0171



0821



0382

**Available on**

**Catch**

JH1, JH2,  
JH15, JH13,  
JH14, JH16,  
JH17

**Elefy**

JH29, JH31,  
JH33, JH35,  
JH37

**In Between**

SK2, SK8,  
SK10

**Pavilion**

AV3, AV4,  
AV12, AV13,  
AV6, AV11,  
AV8, AV14,  
AV10, AV15

**Rely**

HW7-10,  
HW12-15,  
HW17-20,  
HW22-25,  
HW29-32,  
HW35-37,  
HW40-42,  
HW45-47,  
HW50-52,  
HW55-57,  
Seat pad

**Betty**

TK3

**Boomerang**

HM1, HM2

**Little Petra**

VB1, VB2

**Pouf**

ATD1

**Wulff**

ATD2, ATD3

**Margas**

LC1, LC2,  
LC3

**Loafer**

SC24, SC23,  
SC25, SC26

**Mayor**

AJ5, AJ6

**Cloud**

LN1, LN2,  
LN3.2, LN5,  
LN6, LN7

**Develius**

EV1-EV7

**Fly**

SC1, SC2,  
SC3, SC12,  
SC9, SC10

[BACK TO INDEX](#)

Fabric gr. 4

# Fuse

\* Click [here](#) to see all available colours.

\* Due to variations in screen calibration, the fabrics shown here may not be 100% true to colour.

**Brand**

Kvadrat

**Composition**

65% new wool worsted

23% cotton

8% viscose

4% nylon

**Durability**

100,000 Martindale

**Pilling**

3-4 (ISO 1-5)

**Lightfastness**

6-7

**Warranty**

10 years

**Produced In**

Norway

**Sustainability**

Greenguard Gold,

HPD, EPD

**Width**

Approx. 143 cm

(Approx. 56.5")

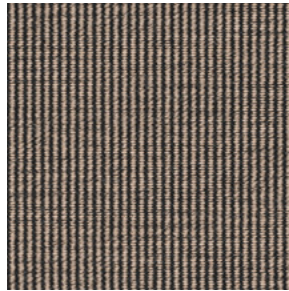
**Weight**

810 g/lin. m

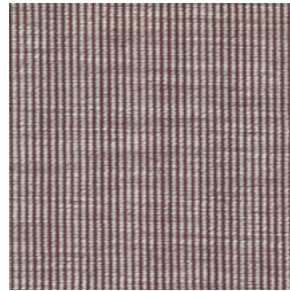
(26.13 oz/ly)

**Fire Test**

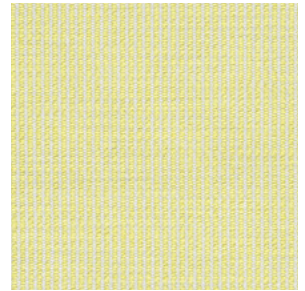
- BS 5852 Crib 5
- BS 5852 part 1
- IMO FTP Code 2010 Part 8
- NF D 60 013
- UNI 9175 1IM
- US Cal. Bull. 117-2013
- EN 1021-1/2
- ÖNORM B1/Q1



0351



0631



0421

**Available on**

**Catch**

JH1, JH2,  
JH15, JH13,  
JH14, JH16,  
JH17

**Elefy**

JH29, JH31,  
JH33, JH35,  
JH37

**In Between**

SK2, SK8,  
SK10

**Pavilion**

AV3, AV4,  
AV12, AV13,  
AV6, AV11,  
AV8, AV14,  
AV10, AV15

**Rely**

HW7-10,  
HW12-15,  
HW17-20,  
HW22-25,  
HW29-32,  
HW35-37,  
HW40-42,  
HW45-47,  
HW50-52,  
HW55-57,  
Seat pad

**Betty**

TK3

**Boomerang**

HM1, HM2

**Loafer**

SC24, SC23,  
SC25, SC26

**Margas**

LC1, LC2,  
LC3

**Mayor**

AJ5, AJ6

**Cloud**

LN1, LN2,  
LN3.2, LN5,  
LN6, LN7

**Develius**

EV1-EV7

**Fly**

SC1, SC2,  
SC3, SC12,  
SC9, SC10

[BACK TO INDEX](#)

Fabric gr. 4

# Gentle

\* Click [here](#) to see all available colours.

\* Due to variations in screen calibration, the fabrics shown here may not be 100% true to colour.

**Brand**

Kvadrat

**Composition**

60% new wool  
20% nylon  
20% polyester

**Durability**

90,000 Martindale

**Pilling**

4-5 (ISO 1-5)

**Lightfastness**

6-7 (ISO 1-8)

**Produced In**

Holland

**Width**

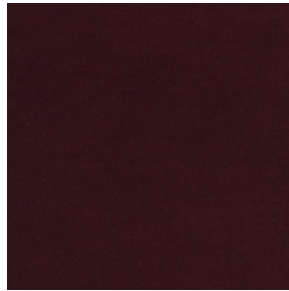
167 cm (65.5")

**Weight**

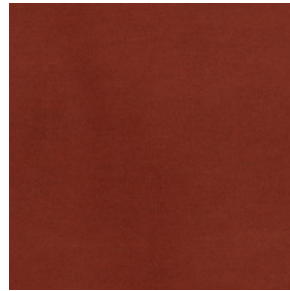
970 g/lin. m  
(31.29 oz/ly)

**Fire Test**

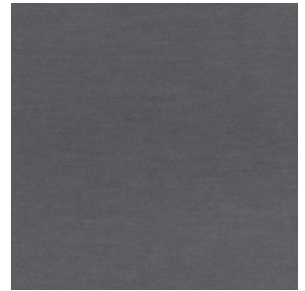
- BS 5852 crib 5 with treatment
- BS 5852 part 1
- IMO FTP Code 2010 Part 8
- UNI 9175 1IM
- US Cal. Bull 117-2013
- DIN 4102 B2
- EN 1021-1/2
- ASTM E84 Class A Unadhered



0683



0373



0133

---

**Available on**

**Catch**

JH1, JH2,  
JH15, JH13,  
JH14, JH16,  
JH17

**Elefy**

JH29, JH31,  
JH33, JH35,  
JH37

**Rely**

HW7-10,  
HW12-15,  
HW17-20,  
HW22-25,  
HW29-32,  
HW35-37,  
HW40-42,  
HW45-47,  
HW50-52,  
HW55-57,  
Seat pad

**Margas**

LC1, LC2,  
LC3

**Isole**

NN1A-NN1G

[BACK TO INDEX](#)



Fabric gr. 2

# Hallingdal

\* Click [here](#) to see all available colours.

\* Due to variations in screen calibration, the fabrics shown here may not be 100% true to colour.

**Brand**

Kvadrat

**Composition**

70% new wool  
30% viscose

**Durability**

100,000 Martindale

**Pilling**

3-4 (ISO 1-5)

**Lightfastness**

7

**Warranty**

10 years

**Produced In**

Norway

**Sustainability**

EU Ecolabel, Greenguard Gold, HPD, EPD

**Width**

Approx. 130 cm (Approx. 51")

**Weight**

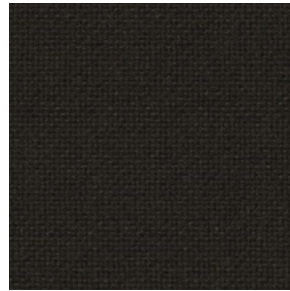
795 g/lin. m (25.64 oz/ly)

**Fire Test**

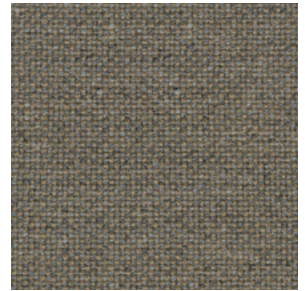
- AS/NZS 1530.3
- BS 5852 Crib 5
- BS 5852 part 1
- IMO FTP Code 2010 Part 8
- NF D 60 013
- NFPA 260
- UNI 9175 1IM
- US Cal. Bull. 117-2013
- EN 1021-1/2
- ASTM E84 Class A Adhered
- SN 198 898 5.3 with treatment
- ÖNORM B1/Q1
- BG 50222 B1 with treatment (Chinese)
- AS/NZS 3837 class 2



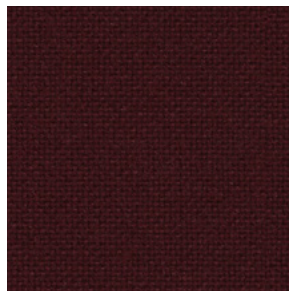
0376



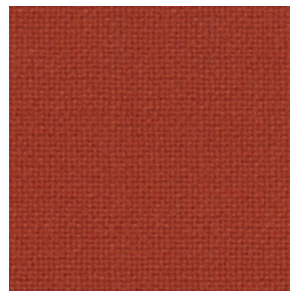
0390



0227



0694



0600



0180



0113



0100



0130

**Available on**

**Catch**

JH1, JH2,  
JH15, JH13,  
JH14, JH16,  
JH17

**Elefy**

JH29, JH31,  
JH33, JH35,  
JH37

**In Between**

SK2, SK8,  
SK10

**Pavilion**

AV3, AV4,  
AV12, AV13,  
AV6, AV11,  
AV8, AV14,  
AV10, AV15

**Rely**

HW7-10,  
HW12-15,  
HW17-20,  
HW22-25,  
HW29-32,  
HW35-37,  
HW40-42,  
HW45-47,  
HW50-52,  
HW55-57,  
Seat pad

**Betty**

TK3

**Boomerang**

HM1, HM2

**Little Petra**

VB1, VB2

**Pouf**

ATD1

**Wulff**

ATD2, ATD3

**Margas**

LC1, LC2,  
LC3

**Loafer**

SC24, SC23,  
SC25, SC26

**Mayor**

AJ5, AJ6

**Cloud**

LN1, LN2,  
LN3.2, LN5,  
LN6, LN7

**Develius**

EV1-EV7

**Isole**

NN1A-  
NN1G

**Fly**

SC1, SC2,  
SC3, SC12,  
SC9, SC10

[BACK TO INDEX](#)

Fabric gr. 3

# Harald

\* Click [here](#) to see all available colours.

\* Due to variations in screen calibration, the fabrics shown here may not be 100% true to colour.

**Brand**

Kvadrat

**Composition**

100% cotton

**Durability**

100,000 Martindale

**Pilling**

4-5 (ISO 1-5)

**Lightfastness**

5-6 (ISO 1-8)

**Warranty**

10 years

**Produced In**

Italy

**Sustainability**

Greenguard Gold,  
HPD, EPD

**Width**

Approx. 140 cm  
(Approx. 55")

**Weight**

520 g/lin. m  
(16.77 oz/ly)

**Fire Test**

- AS/NZS 1530.3
- EN 1021-1
- AS/NZS 3837 class 1



0242



0283



0652



0952



0182

---

**Available on**

**In Between**  
SK2, SK8,  
SK10

**Pavilion**  
AV3, AV4,  
AV12, AV13,  
AV6, AV11,  
AV8, AV14,  
AV10, AV15

**Boomerang**  
HM1, HM2

**Loafer**  
SC24, SC23,  
SC25, SC26

**Mayor**  
AJ5, AJ6

**Develius**  
EV1-EV7

**Fly**  
SC1, SC2,  
SC3, SC12,  
SC9, SC10

Fabric gr. 2

# Hero

\* Click [here](#) to see all available colours.

\* Due to variations in screen calibration, the fabrics shown here may not be 100% true to colour.

**Brand**

Kvadrat

**Composition**

96% new wool

4% nylon

**Durability**

45,000 Martindale

**Pilling**

3-4 (ISO 1-5)

**Lightfastness**

5-6

**Warranty**

10 years

**Produced In**

United Kingdom

**Sustainability**

EU Ecolabel,

Greenguard Gold,

HPD, EPD

**Width**

Approx. 140 cm

(Approx. 55")

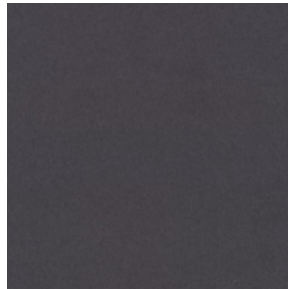
**Weight**

560 g/lin. m

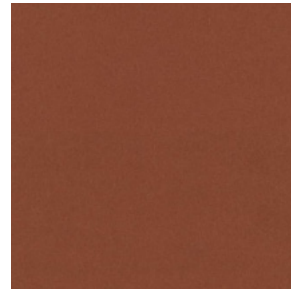
(18.06 oz/ly)

**Fire Test**

- BS 5852 crib 5 with treatment
- BS 5852 part 1
- IMO FTP Code 2010 Part 7 with treatment
- IMO FTP Code 2010 Part 8
- NF D 60 013 · SN 109 909 5.3 with treatment
- NUI 9175 11M
- US Cal. Bull. 117-2013
- EN 1021-1/2
- NFPA 701 with treatment
- AS/NZS 3837 class 2
- ASTM E84 Class B Adhered
- ASTM E84 Class A Unadhered



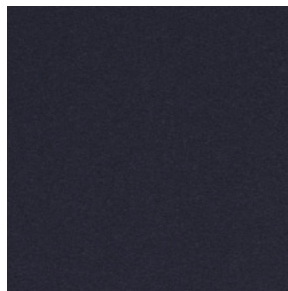
0181



0481



0931



0791

**Available on**

**Catch**

JH1, JH2,  
JH15, JH13,  
JH14, JH16,  
JH17

**Elefy**

JH29, JH31,  
JH33, JH35,  
JH37

**In Between**

SK2, SK8,  
SK10

**Pavilion**

AV3, AV4,  
AV12, AV13,  
AV6, AV11,  
AV8, AV14,  
AV10, AV15

**Rely**

HW7-10,  
HW12-15,  
HW17-20,  
HW22-25,  
HW29-32,  
HW35-37,  
HW40-42,  
HW45-47,  
HW50-52,  
HW55-57,  
Seat pad

**Betty**

TK3

**Boomerang**

HM1, HM2

**Loafer**

SC24, SC23,  
SC25, SC26

**Margas**

LC1, LC2,  
LC3

**Mayor**

AJ5, AJ6

**Cloud**

LN1, LN2,  
LN3.2, LN5,  
LN6, LN7

**Fly**

SC1, SC2,  
SC3, SC12,  
SC9, SC10

[BACK TO INDEX](#)

Fabric gr. 2

# Maple

\* Click [here](#) to see all available colours.

\* Due to variations in screen calibration, the fabrics shown here may not be 100% true to colour.

**Brand**

Kvadrat

**Composition**

81% Viscose  
15% linen  
4% Polyester

**Durability**

30,000 Martindale

**Pilling**

4-5 (ISO 1-5)

**Lightfastness**

5

**Warranty**

10 years

**Produced In**

Turkey

**Sustainability**

Greenguard Gold,  
HPD, EPD

**Width**

Approx. 140 cm  
(Approx. 55")

**Weight**

910 g/lin. m  
(29.35 oz/ly)

**Fire Test**

- AS/NZS 1530.3
- BS 5852 crib 5 with treatment
- BS 5852 part 1
- IMO FTP Code 2010 Part 8
- NFPA 260
- EN 1021-1/2
- US Cal. Bull. 117-2013
- AS/NZS 3837 class 2



0112



0222



0392

**Available on**

**In Between**  
SK2, SK8,  
SK10

**Pavilion**  
AV3, AV4,  
AV12, AV13,  
AV6, AV11,  
AV8, AV14,  
AV10, AV15

**Betty**  
TK3  
  
**Boomerang**  
HM1, HM2

**Loafer**  
SC24, SC23,  
SC25, SC26

**Mayor**  
AJ5, AJ6

**Cloud**  
LN1, LN2,  
LN3.2, LN5,  
LN6, LN7

**Develius**  
EV1-EV7

**Fly**  
SC1, SC2,  
SC3, SC12,  
SC9, SC10

Fabric gr. 3

# Moss

\* Click [here](#) to see all available colours.

\* Due to variations in screen calibration, the fabrics shown here may not be 100% true to colour.

**Brand**

Kvadrat

**Composition**

52% cotton  
22% viscose  
14% polyacrylic  
6% linen  
3% nylon  
3% Polyester

**Durability**

50,000 Martindale

**Pilling**

4-5 (ISO 1-5)

**Lightfastness**

5-7 (ISO 1-8)

**Warranty**

2 years

**Produced In**

Belgium

**Width**

138 cm (54.5")

**Weight**

918 g/lin. m  
(29.61 oz/ly)

**Fire Test**

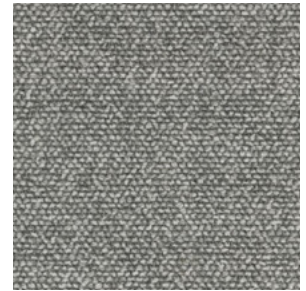
- EN 1021-1/2
- BS 5852 crib 5 with treatment
- BS 5852 part 1



0013



0018



0006



0009

---

**Available on**

**Loafer**

SC24, SC23,  
SC25, SC26



Fabric gr. 2

# Nitto

\* Click [here](#) to see all available colours.

\* Due to variations in screen calibration, the fabrics shown here may not be 100% true to colour.

**Brand**

Kvadrat

**Composition**

46% new wool

45% polyester FR

11% nylon

**Durability**

100,000 Martindale

**Pilling**

3-4 (ISO 1-5)

**Lightfastness**

5-6 (ISO 1-8)

**Warranty**

5 years

**Produced In**

Lithuania

**Sustainability**

Greenguard Gold,  
HPD, EPD

**Width**

175 cm (69")

**Weight**

700 g/lin. m (22.58 oz/ly)

**Fire Test**

- AS/NZS 1530.3
- BS 5852 crib 5 with treatment
- IMO FTP Code 2010 Part 8
- UNI 9175 1IM
- US Cal. Bull. 117-2013
- ASTM E84 Class A Unadhered
- EN 1021-1/2



0207



0797

---

**Available on**

**Isole**

NN1A-NN1G



Fabric gr. 2

# Planum

\* Click [here](#) to see all available colours.

\* Due to variations in screen calibration, the fabrics shown here may not be 100% true to colour.

**Brand**

Kvadrat

**Composition**

44% new wool  
42% polyester FR  
14% nylon

**Durability**

100,000 Martindale

**Pilling**

4 (ISO 1-5)

**Lightfastness**

5-6 (ISO 1-8)

**Warranty**

10 years

**Produced In**

Holland

**Sustainability**

Greenguard Gold,  
HPD, EPD

**Width**

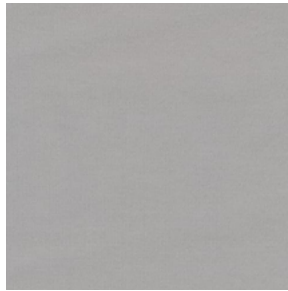
160 cm (63")

**Weight**

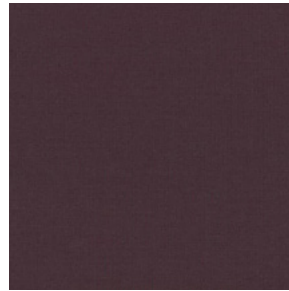
700 g/lin. m  
(22.58 oz/ly)

**Fire Test**

- BS 5852 crib 5 with treatment
- IMO FTP Code 2010 Part 8
- NFPA 260
- UNI 9175 1IM
- US Cal. Bull. 117-2013
- DIN 4102 B2
- EN 1021-1/2
- ASTM E84 Class A Unadhered



011



0681

---

**Available on**

**Isole**

NN1A-NN1G

[BACK TO INDEX](#)

Fabric gr. 1

# Relate

\* Click [here](#) to see all available colours.

\* Due to variations in screen calibration, the fabrics shown here may not be 100% true to colour.

**Brand**

Kvadrat

**Composition**

100% Trevira CS

**Durability**

80,000 Martindale

**Pilling**

4-5 (ISO 1-5)

**Lightfastness**

6-7

**Produced In**

Holland

**Sustainability**

EU Ecolabel

**Width**

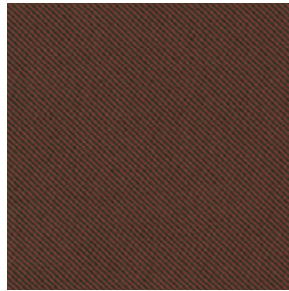
Approx. 140 cm  
(Approx. 55")

**Weight**

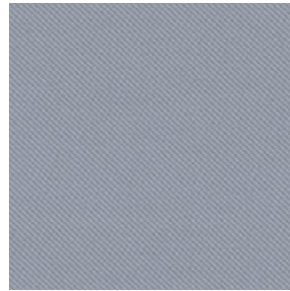
450 g/lin. m  
(14.51 oz/ly)

**Fire Test**

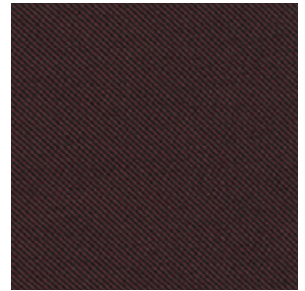
- BS 5852 Crib 5
- IMO FTP Code 2010 Part 8
- NF D 60 013
- NFPA 701
- SN 198 898 5.2
- UNI 9177 Classe 1
- US Cal. Bull 117-2013
- NF P 92 507 M1
- DIN 4102 B1
- EN 1021-1/2
- ÖNORM B1/Q1
- ASTM E84 Class A Unadhered
- ASTM E84 Class B Adhered
- UNI 9175 11M



0271



0711



0381

---

**Available on**

**Rely**

HW7-10,  
HW12-15,  
HW17-20,  
HW22-25,  
HW29-32,  
HW35-37,  
HW40-42,  
HW45-47,  
HW50-52,  
HW55-57,  
Seat pad

**Margas**

LC1, LC2,  
LC3

[BACK TO INDEX](#)

Fabric gr. 1

# Remix

\* Click [here](#) to see all available colours.

\* Due to variations in screen calibration, the fabrics shown here may not be 100% true to colour.

**Brand**

Kvadrat

**Composition**

90% new wool worsted  
10% nylon

**Durability**

100,000 Martindale

**Pilling**

4 (ISO 1-5)

**Lightfastness**

6

**Warranty**

10 years

**Produced In**

United Kingdom

**Sustainability**

EU Ecolabel, Greenguard gold,  
HPD, EPD

**Width**

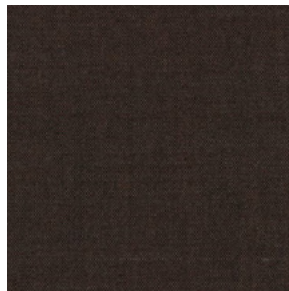
Approx. 140 cm (Approx. 55")

**Weight**

420 g/lin. m (13.55 oz/ly)

**Fire Test**

- AS/NZS 1530.3
- BS 5852 crib 5 with treatment
- BS 5852 ignition source 3
- BS 5852 part 1
- IMO FTP Code 2010 Part 7 with treatment
- IMO FTP Code 2010 Part 8
- NF D 60 013
- NFPA 260
- SN 198 898 5.3 with treatment
- UNI 9175 11M
- US Cal. Bull 117-2013
- EN 1021-1/2
- AS/NZS 3837 class 2
- ÖNORM B1/Q1
- ASTM E84 Class A Unadhered
- ASTM E84 Class A Adhered
- GB 50222 B1 with treatment (Chinese)



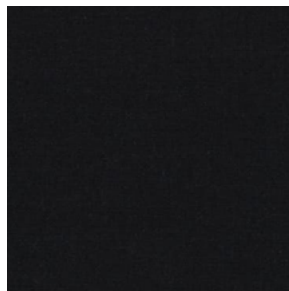
0356



0233



0276



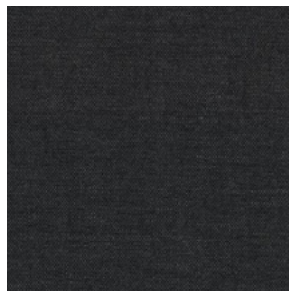
0296



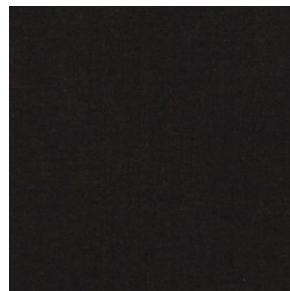
0996



0133



0173



0383

**Available on**

**Catch**

JH1, JH2,  
JH15, JH13,  
JH14, JH16,  
JH17

**Elefy**

JH29, JH31,  
JH33, JH35,  
JH37

**In Between**

SK2, SK8,  
SK10

**Pavilion**

AV3, AV4,  
AV12, AV13,  
AV6, AV11,  
AV8, AV14,  
AV10, AV15

**Rely**

HW7-10,  
HW12-15,  
HW17-20,  
HW22-25,  
HW29-32,  
HW35-37,  
HW40-42,  
HW45-47,  
HW50-52,  
HW55-57,  
Seat pad

**Betty**

TK3

**Boomerang**

HM1, HM2

**Wulff**

ATD2, ATD3

**Margas**

LC1, LC2,  
LC3

**Loafer**

SC24, SC23,  
SC25, SC26

**Mayor**

AJ5, AJ6

**Cloud**

LN1, LN2,  
LN3.2, LN5,  
LN6, LN7

**Develius**

EV1-EV7

**Isole**

NN1A-NN1G

**Fly**

SC1, SC2,  
SC3, SC12,  
SC9, SC10

[BACK TO INDEX](#)

Fabric gr. 1

# Re-Wool

\* Click [here](#) to see all available colours.

\* Due to variations in screen calibration, the fabrics shown here may not be 100% true to colour.

**Brand**

Kvadrat

**Composition**

45% new wool worsted

45% recycled wool

10% nylon

**Durability**

100,000 Martindale

**Pilling**

4 (ISO 1-5)

**Lightfastness**

5-7 (ISO 1-8)

**Warranty**

10 years

**Produced In**

United Kingdom

**Sustainability**

EU Ecolabel,

Greenguard gold,

HPD, EPD

**Width**

Approx. 140 cm

(Approx. 55")

**Weight**

540 g/lin. m (17.42 oz/ly)

**Fire Test**

- AS/NZS 15030.3
- BS 5852 crib 5 with treatment
- BS 5852 ignition source 3
- BS 5852 part 1
- IMO FTP Code 2010 Part 8
- NF D 60 013
- UNI 9175 11M
- US Cal. Bull. 117-2013
- EN 1021-1/2
- SN 198 898 5.3 with treatment
- AS/NZS 3837 class 2
- ÖNORM B1/Q1



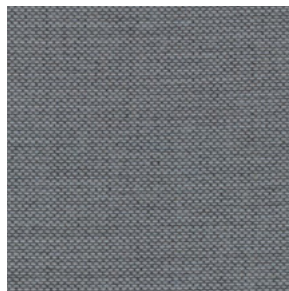
0128



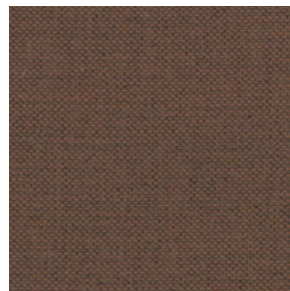
0198



0218



0718



0378

**Available on**

**Catch**

JH1, JH2,  
JH15, JH13,  
JH14, JH16,  
JH17

**Elefy**

JH29, JH31,  
JH33, JH35,  
JH37

**In Between**

SK2, SK8,  
SK10

**Pavilion**

AV3, AV4,  
AV12, AV13,  
AV6, AV11,  
AV8, AV14,  
AV10, AV15

**Rely**

HW7-10,  
HW12-15,  
HW17-20,  
HW22-25,  
HW29-32,  
HW35-37,  
HW40-42,  
HW45-47,  
HW50-52,  
HW55-57,  
Seat pad

**Betty**

TK3

**Boomerang**

HM1, HM2

**Wulff**

ATD2, ATD3

**Margas**

LC1, LC2,  
LC3

**Loafer**

SC24, SC23,  
SC25, SC26

**Mayor**

AJ5, AJ6

**Cloud**

LN1, LN2,  
LN3.2, LN5,  
LN6, LN7

**Develius**

EV1-EV7

**Fly**

SC1, SC2,  
SC3, SC12,  
SC9, SC10

[BACK TO INDEX](#)

**Fabric gr. 4**

# Ria

\* Click [here](#) to see all available colours.

\* Due to variations in screen calibration, the fabrics shown here may not be 100% true to colour.

**Brand**

Kvadrat

**Composition**

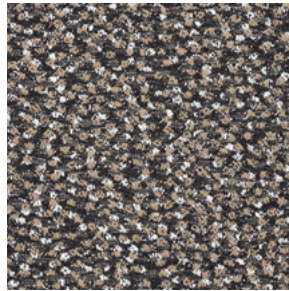
84% new wool worsted

12% viscose

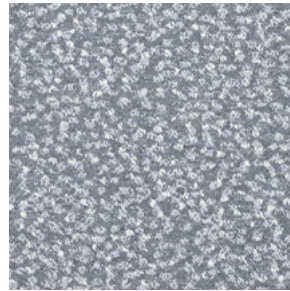
4% nylon

**Durability**

50,000 Martindale



0281



0141

**Pilling**

4 (ISO 1-5)

**Lightfastness**

7

**Warranty**

10 years

**Produced In**

Norway

**Sustainability**

Greenguard gold,  
HPD

**Width**

Approx. 140 cm

(Approx. 55")

**Weight**

840 g/lin. m (27.09 oz/ly)

**Fire Test**

- NF D 60 013
- EN 1021-1/2
- US Cal. Bull. 117-2013
- SN 198 898 5.3 with treatment
- BS 5852 part 1
- BS 5852 crub 5 with treatment
- IMO FTP Code 2010 Part 8
- UNI 9175 11M

**Available on**

**Catch**

JH1, JH2,  
JH15, JH13,  
JH14, JH16,  
JH17

**Elefy**

JH29, JH31,  
JH33, JH35,  
JH37

**In Between**

SK2, SK8,  
SK10

**Pavilion**

AV3, AV4,  
AV12, AV13,  
AV6, AV11,  
AV8, AV14,  
AV10, AV15

**Rely**

HW7-10,  
HW12-15,  
HW17-20,  
HW22-25,  
HW29-32,  
HW35-37,  
HW40-42,  
HW45-47,  
HW50-52,  
HW55-57,  
Seat pad

**Betty**

TK3

**Boomerang**

HM1, HM2

**Loafer**

SC24, SC23,  
SC25, SC26

**Margas**

LC1, LC2,  
LC3

**Mayor**

AJ5, AJ6

**Cloud**

LN1, LN2,  
LN3.2, LN5,  
LN6, LN7

**Develius**

EV1-EV7

**Fly**

SC1, SC2,  
SC3, SC12,  
SC9, SC10



Fabric gr. 4

# Sonar

\* Click [here](#) to see all available colours.

\* Due to variations in screen calibration, the fabrics shown here may not be 100% true to colour.

**Brand**  
Kvadrat

**Composition**  
59% new wool  
25% viscose  
9% linen  
5% nylon  
2% polyester

**Durability**  
20,000 Martindale

**Pilling**  
3-4 (ISO 1-5)

**Lightfastness**  
7

**Warranty**  
10 years

**Produced In**  
Norway

**Sustainability**  
Greenguard gold, HPD

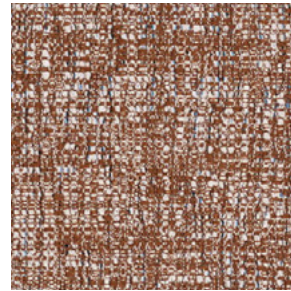
**Width**  
Approx. 150 cm (Approx. 59")

**Weight**  
770 g/lin. m (24.84 oz/ly)

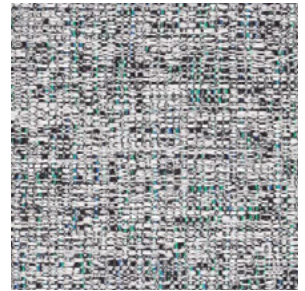
- Fire Test**
- BS 5852 crib 5 with treatment
  - BS 5852 part 1
  - IMO FTP Code 2010 Part 8
  - UNI 9175 1IM
  - US Cal. Bull. 117-2013
  - EN 1021-1/2
  - AS/NZS 3837 class 2



0384



0374



0164

**Available on**

**Catch**

JH1, JH2,  
JH15, JH13,  
JH14, JH16,  
JH17

**Elefy**

JH29, JH31,  
JH33, JH35,  
JH37

**In Between**

SK2, SK8,  
SK10

**Pavilion**

AV3, AV4,  
AV12, AV13,  
AV6, AV11,  
AV8, AV14,  
AV10, AV15

**Rely**

HW7-10,  
HW12-15,  
HW17-20,  
HW22-25,  
HW29-32,  
HW35-37,  
HW40-42,  
HW45-47,  
HW50-52,  
HW55-57,  
Seat pad

**Betty**

TK3

**Boomerang**

HM1, HM2

**Loafer**

SC24, SC23,  
SC25, SC26

**Margas**

LC1, LC2,  
LC3

**Mayor**

AJ5, AJ6

**Cloud**

LN1, LN2,  
LN3.2, LN5,  
LN6, LN7

**Develius**

EV1-EV7

**Fly**

SC1, SC2,  
SC3, SC12,  
SC9, SC10



Fabric gr. 2

# Steelcut

\* Click [here](#) to see all available colours.

\* Due to variations in screen calibration, the fabrics shown here may not be 100% true to colour.

**Brand**

Kvadrat

**Composition**

90% new wool worsted  
10% nylon

**Durability**

100,000 Martindale

**Pilling**

3-4 (ISO 1-5)

**Lightfastness**

5

**Warranty**

10 years

**Produced In**

United Kingdom

**Sustainability**

EU Ecolabel, Greenguard gold,  
HPD, EPD

**Width**

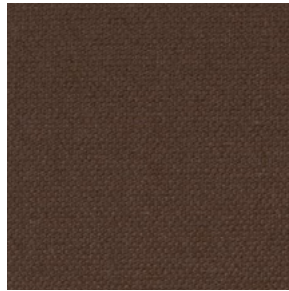
Approx. 140 cm  
(Approx. 55")

**Weight**

825 g/lin. m (26.61 oz/ly)

**Fire Test**

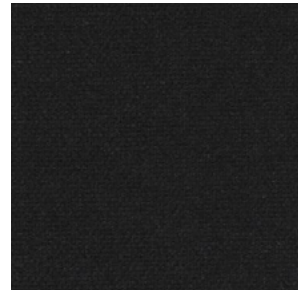
- AS/NZS 1530.3
- BS 5852 crib 5 with treatment
- BS 5852 part 1
- IMO FTP Code 2010 Part 8
- NF D 60 013
- NFPA 260
- SN 198 898 5.3 with treatment
- UNI 9175 11M
- US Cal. Bull. 117-2013
- EN 1021-1/2
- AS/NZS 3837 class 2
- ÖNORM B1/Q1



0365



0370



0190

**Available on**

**Catch**

JH1, JH2,  
JH15, JH13,  
JH14, JH16,  
JH17

**Elefy**

JH29, JH31,  
JH33, JH35,  
JH37

**In Between**

SK2, SK8,  
SK10

**Pavilion**

AV3, AV4,  
AV12, AV13,  
AV6, AV11,  
AV8, AV14,  
AV10, AV15

**Rely**

HW7-10,  
HW12-15,  
HW17-20,  
HW22-25,  
HW29-32,  
HW35-37,  
HW40-42,  
HW45-47,  
HW50-52,  
HW55-57,  
Seat pad

**Betty**

TK3

**Boomerang**

HM1, HM2

**Loafer**

SC24, SC23,  
SC25, SC26

**Margas**

LC1, LC2,  
LC3

**Mayor**

AJ5, AJ6

**Cloud**

LN1, LN2,  
LN3.2, LN5,  
LN6, LN7

**Develius**

EV1-EV7

**Fly**

SC1, SC2,  
SC3, SC12,  
SC9, SC10

[BACK TO INDEX](#)

Fabric gr. 2

# Steelcut Trio

\* Click [here](#) to see all available colours.

\* Due to variations in screen calibration, the fabrics shown here may not be 100% true to colour.

**Brand**

Kvadrat

**Composition**

90% new wool worsted  
10% nylon

**Durability**

100,000 Martindale

**Pilling**

4 (ISO 1-5)

**Lightfastness**

6-7

**Warranty**

10 years

**Produced In**

United Kingdom

**Sustainability**

EU Ecolabel, Greenguard gold,  
HPD, EPD

**Width**

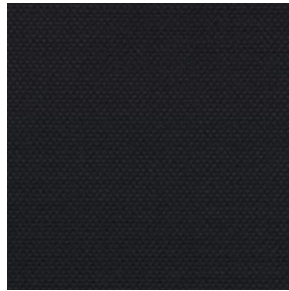
Approx. 140 cm  
(Approx. 55")

**Weight**

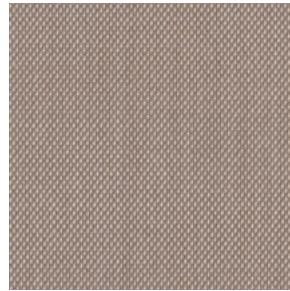
770 g/lin. m (24.84 oz/ly)

**Fire Test**

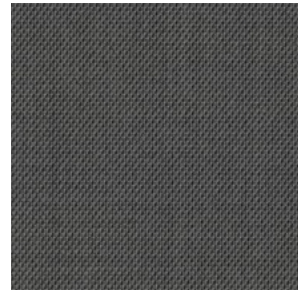
- AS/NZS 1530.3
- BS 5852 crib 5 with treatment
- BS 5852 ignition source 3
- BS 5852 part 1
- IMO FTP Code 2010 Part 8
- NF D 60 013
- NFPA 260
- SN 198 898 5.3 with treatment
- UNI 9175 1IM
- US Cal. Bull. 117-2013
- EN 1021-1/2
- ASTM E84 Class B Unadhered
- ASTM E84 Class B Adhered
- ÖNORM B1/Q1
- AS/NZS 3837 class 2
- GB 50222 B1 with treatment (Chinese)



0195



0213



0153



0253

**Available on**

**Catch**

JH1, JH2,  
JH15, JH13,  
JH14, JH16,  
JH17

**Elefy**

JH29, JH31,  
JH33, JH35,  
JH37

**In Between**

SK2, SK8,  
SK10

**Pavilion**

AV3, AV4,  
AV12, AV13,  
AV6, AV11,  
AV8, AV14,  
AV10, AV15

**Rely**

HW7-10,  
HW12-15,  
HW17-20,  
HW22-25,  
HW29-32,  
HW35-37,  
HW40-42,  
HW45-47,  
HW50-52,  
HW55-57,  
Seat pad

**Betty**

TK3

**Boomerang**

HM1, HM2

**Loafer**

SC24, SC23,  
SC25, SC26

**Margas**

LC1, LC2,  
LC3

**Mayor**

AJ5, AJ6

**Cloud**

LN1, LN2,  
LN3.2, LN5,  
LN6, LN7

**Develius**

EV1-EV7

**Fly**

SC1, SC2,  
SC3, SC12,  
SC9, SC10

[BACK TO INDEX](#)

Fabric gr. 3

# Sunniva

\* Click [here](#) to see all available colours.

\* Due to variations in screen calibration, the fabrics shown here may not be 100% true to colour.

**Brand**

Kvadrat

**Composition**

58% new wool  
25% viscose  
8% linen  
5%nylon  
4% polyester

**Durability**

50,000 Martindale

**Pilling**

3 (ISO 1-5)

**Lightfastness**

5

**Warranty**

10 years

**Produced In**

Norway

**Width**

Approx. 140 cm  
(Approx. 55")

**Weight**

593 g/lin. m  
(19.13 oz/ly)

**Fire Test**

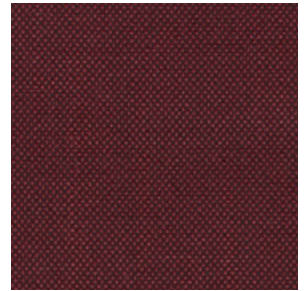
- BS 5852 crib 5 with treatment
- IMO FTP Code 2010:Part 8 with treatment
- NFPA 260
- US Cal. Bull. 117-2013
- EN 1021-1/2
- As/NZS 2827 class 2



0242



1079



0662

**Available on**

**Catch**

JH1, JH2,  
JH15, JH13,  
JH14, JH16,  
JH17

**Elefy**

JH29, JH31,  
JH33, JH35,  
JH37

**In Between**

SK2, SK8,  
SK10

**Pavilion**

AV3, AV4,  
AV12, AV13,  
AV6, AV11,  
AV8, AV14,  
AV10, AV15

**Boomerang**

HM1, HM2

**Little Petra**

VB1, VB2

**Pouf**

ATD1

**Wulff**

ATD2, ATD3

**Loafer**

SC24, SC23,  
SC25, SC26

**Mayor**

AJ5, AJ6

**Cloud**

LN1, LN2,  
LN3.2, LN5,  
LN6, LN7

**Develius**

EV1-EV7

**Fly**

SC1, SC2,  
SC3, SC12,  
SC9, SC10

Fabric gr. 2

# Tonus

\* Click [here](#) to see all available colours.

\* Due to variations in screen calibration, the fabrics shown here may not be 100% true to colour.

**Brand**

Kvadrat

**Composition**

90% new wool  
10% Helanca

**Durability**

100,000 Martindale

**Pilling**

3 (ISO 1-5)

**Lightfastness**

5

**Warranty**

10 years

**Produced In**

United Kingdom

**Sustainability**

EU Ecolabel,  
Greenguard Gold,  
HPD, EPD

**Width**

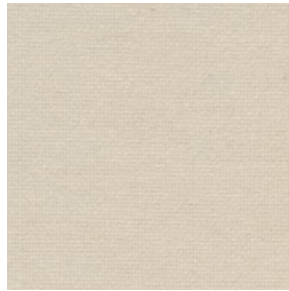
Approx. 140 cm (Approx. 55")

**Weight**

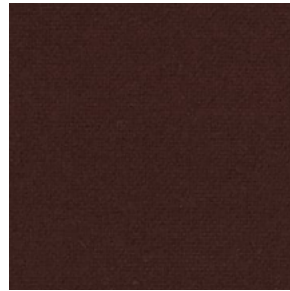
665 g/lin. m (21.45 oz/ly)

**Fire Test**

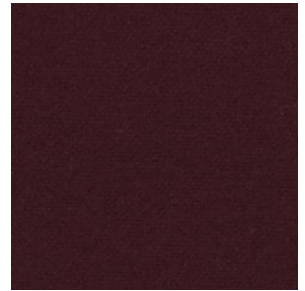
- AS/NZS 1530.3
- BS 5852 crib 5 with treatment
- BS 5852 part 1
- IMO FTP Code 2010 Part 8
- NF D 60 013
- NFPA 260
- SN 198 898 5.3 with treatment
- Uni 9175 11M
- US Cal. Bull. 117-2013
- EN 1021-1/2
- AS/NZS3837 class 3
- ÖNORM B1/Q1



0100



0374



0610



0764

**Available on**

**Catch**

JH1, JH2,  
JH15, JH13,  
JH14, JH16,  
JH17

**Elefy**

JH29, JH31,  
JH33, JH35,  
JH37

**In Between**

SK2, SK8,  
SK10

**Pavilion**

AV3, AV4,  
AV12, AV13,  
AV6, AV11,  
AV8, AV14,  
AV10, AV15

**Rely**

HW7-10,  
HW12-15,  
HW17-20,  
HW22-25,  
HW29-32,  
HW35-37,  
HW40-42,  
HW45-47,  
HW50-52,  
HW55-57,  
Seat pad

**Betty**

TK3

**Boomerang**

HM1, HM2

**Little Petra**

VB1, VB2

**Pouf**

ATD1

**Wulff**

ATD2, ATD3

**Margas**

LC1, LC2,  
LC3

**Loafer**

SC24, SC23,  
SC25, SC26

**Mayor**

AJ5, AJ6

**Cloud**

LN1, LN2,  
LN3.2, LN5,  
LN6, LN7

**Fly**

SC1, SC2,  
SC3, SC12,  
SC9, SC10

[BACK TO INDEX](#)

Fabric gr. 3

# Twill Weave

\* Click [here](#) to see all available colours.

\* Due to variations in screen calibration, the fabrics shown here may not be 100% true to colour.

**Brand**

Kvadrat

**Composition**

90% new wool worsted  
10% nylon

**Durability**

60,000 Martindale

**Pilling**

3-4 (ISO 1-5)

**Lightfastness**

5-7 (ISO 1-8)

**Warranty**

10 years

**Produced In**

United Kingdom

**Sustainability**

EU Ecolabel, Greenguard Gold, HPD

**Width**

Approx. 140 cm (Approx. 55")

**Weight**

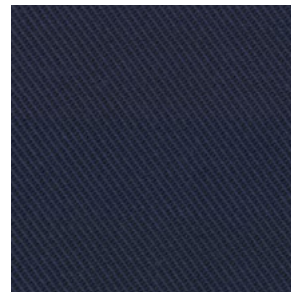
960 g/lin. m (30.96 oz/ly)

**Fire Test**

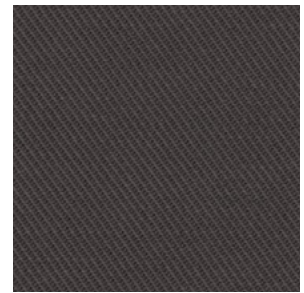
- AS/NZS 1530.3
- BS 5852 crib 5 with treatment
- BS 5852 ignition course 3
- BS 5852 part 1
- IMO FTP Code 2010 Part 8
- NF D 60 013
- SN 198 898 5.3 with treatment
- UNI 9175 1IM
- US Cal. Bull. 117-2013
- EN 1021-1/2
- ÖNORM B1/Q1
- AS/NZS3837 class 3
- ASTM E84 Class A Unadhered
- ASTM E84 Class B Adhered



0570



0780



0160

**Available on**

**Catch**

JH1, JH2,  
JH15, JH13,  
JH14, JH16,  
JH17

**Elefy**

JH29, JH31,  
JH33, JH35,  
JH37

**In Between**

SK2, SK8,  
SK10

**Pavilion**

AV3, AV4,  
AV12, AV13,  
AV6, AV11,  
AV8, AV14,  
AV10, AV15

**Rely**

HW7-10,  
HW12-15,  
HW17-20,  
HW22-25,  
HW29-32,  
HW35-37,  
HW40-42,  
HW45-47,  
HW50-52,  
HW55-57,  
Seat pad

**Betty**

TK3

**Boomerang**

HM1, HM2

**Loafer**

SC24, SC23,  
SC25, SC26

**Mayor**

AJ5, AJ6

**Cloud**

LN1, LN2,  
LN3.2, LN5,  
LN6, LN7

**Develius**

EV1-EV7

**Fly**

SC1, SC2,  
SC3, SC12,  
SC9, SC10

Fabric gr. 2

# Uniform Melange

\* Click [here](#) to see all available colours.

\* Due to variations in screen calibration, the fabrics shown here may not be 100% true to colour.

## Brand

Kvadrat

## Composition

68% new wool

22% nylon

10% polyester

## Durability

100,000 Martindale

## Pilling

4 (ISO 1-5)

## Lightfastness

6 (ISO 1-8)

## Produced In

Holland

## Sustainability

Greenguard Gold,

HPD, EPD

## Width

165 cm (65")

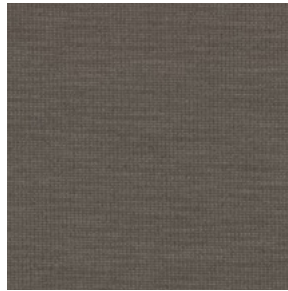
## Weight

870 g/lin. m

(28.06 oz/ly)

## Fire Test

- AS/NZS 1530.3
- AS/NZS 3837
- BS 5852 crib 5 with treatment
- BS 5852 part 1
- IMO FTP Code 2010 Part 8
- NFPA 260
- US Cal. Bull. 117-2013
- DIN 4102 B2
- EN 1021-1/2
- ASTM E84 Class A Unadhered



0263



0293



0553

---

## Available on

### Isole

NN1A-NN1G

[BACK TO INDEX](#)



Fabric gr. 3

# Vidar

\* Click [here](#) to see all available colours.

\* Due to variations in screen calibration, the fabrics shown here may not be 100% true to colour.

**Brand**

Kvadrat

**Composition**

94% new wool

6% nylon

**Durability**

100,000 Martindale

**Pilling**

4 (ISO 1-5)

**Lightfastness**

7

**Warranty**

10 years

**Produced In**

Norway

**Sustainability**

EU Ecolabel, Greenguard Gold,

HPD, EPD

**Width**

Approx. 140 cm (Approx. 55")

**Weight**

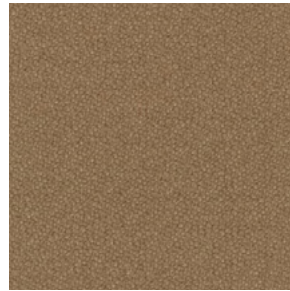
765 g/lin. m (24.67 oz/ly)

**Fire Test**

- BS 5752 crub 5 with treatment
- BS 5852 part 1
- IMO FTP Code 2010 Part 8
- NF D 60 013
- NFPA 260
- UNI 9175 11M
- US Cal. Bull. 117-2013
- EN 1021-1/2
- AS/NZA 3837 class 2
- GB 50222 B1 with treatment (Chinese)
- SN 198 898 5.3 with treatment
- IMO FTP Code 2010 Part 7 with treatment



0323



0333



0723



0693



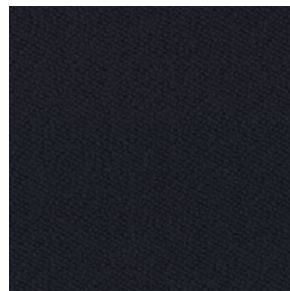
0133



0943



0582



0554

**Available on**

**Catch**

JH1, JH2,  
JH15, JH13,  
JH14, JH16,  
JH17

**Elefy**

JH29, JH31,  
JH33, JH35,  
JH37

**In Between**

SK2, SK8,  
SK10

**Pavilion**

AV3, AV4,  
AV12, AV13,  
AV6, AV11,  
AV8, AV14,  
AV10, AV15

**Rely**

HW7-10,  
HW12-15,  
HW17-20,  
HW22-25,  
HW29-32,  
HW35-37,  
HW40-42,  
HW45-47,  
HW50-52,  
HW55-57,  
Seat pad

**Betty**

TK3

**Boomerang**

HM1, HM2

**Little Petra**

VB1, VB2

**Pouf**

ATD1

**Margas**

LC1, LC2,  
LC3

**Wulff**

ATD2, ATD3

**Loafer**

SC24, SC23,  
SC25, SC26

**Mayor**

AJ5, AJ6

**Cloud**

LN1, LN2,  
LN3.2, LN5,  
LN6, LN7

**Develius**

EV1-EV7

**Fly**

SC1, SC2,  
SC3, SC12,  
SC9, SC10

[BACK TO INDEX](#)

Fabric gr. 3

# Zero

\* Click [here](#) to see all available colours.

\* Due to variations in screen calibration, the fabrics shown here may not be 100% true to colour.

**Brand**

Kvadrat

**Composition**

65% cotton  
20% polyacrylic  
15% polyester

**Durability**

70,000 Martindale

**Pilling**

5 (ISO 1-5)

**Lightfastness**

5-6 (ISO 1-8)

**Warranty**

2 years

**Produced In**

Belgium

**Sustainability**

Greenguard Gold,  
HPD

**Width**

140 cm  
(Approx. 55")

**Weight**

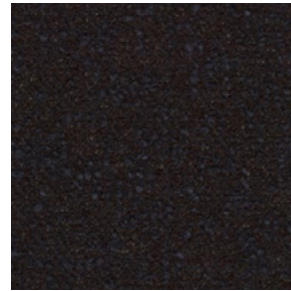
740 g/lin. m  
(23.87 oz/ly)

**Fire Test**

- BS 5852 crib 5 with treatment
- EN 1021-1



0009



0010



0011



0013

**Available on**

**Catch**

JH1, JH2,  
JH15, JH13,  
JH14, JH16,  
JH17

**Elefy**

JH29, JH31,  
JH33, JH35,  
JH37

**In Between**

SK2, SK8,  
SK10

**Pavilion**

AV3, AV4,  
AV12, AV13,  
AV6, AV11,  
AV8, AV14,  
AV10, AV15

**Rely**

HW7-10,  
HW12-15,  
HW17-20,  
HW22-25,  
HW29-32,  
HW35-37,  
HW40-42,  
HW45-47,  
HW50-52,  
HW55-57,  
Seat pad

**Betty**

TK3

**Boomerang**

HM1, HM2

**Little Petra**

VB1, VB2

**Pouf**

ATD1

**Wulff**

ATD2, ATD3

**Margas**

LC1, LC2,  
LC3

**Loafer**

SC24, SC23,  
SC25, SC26

**Mayor**

AJ5, AJ6

**Cloud**

LN1, LN2,  
LN3.2, LN5,  
LN6, LN7

**Develius**

EV1-EV7

**Fly**

SC1, SC2,  
SC3, SC12,  
SC9, SC10

[BACK TO INDEX](#)

Fabric gr. 3

# Atelier Moderne

\* Click [here](#) to see all available colours.

\* Due to variations in screen calibration, the fabrics shown here may not be 100% true to colour.

**Brand**

Dedar

**Composition**

92% linen

8% nylon/polyamid

**Durability**

40,000 Martindale

**Pilling**

3 / ISO 12945

**Lightfastness**

5

**Produced In**

Italy

**Width**

143 cm (56.3")

**Weight**

700 g/ml

**Fire Test**

- EN 1021 (part ½)
- FR-UK BS5852 CIGAR. TEST
- FR-UK BS5852 CIG. MATCH with treatment
- US. Cal. Bull 117-2013 w. treatment



001 Fondente



004 Avorio



010 Celadon



012 Quasinerio

**Available on**

**In Between**  
SK2, SK8,  
SK10

**Pavilion**  
AV3, AV4,  
AV12, AV13,  
AV6, AV11,  
AV8, AV14,  
AV10, AV15

**Rely**  
HW7-10,  
HW12-15,  
HW17-20,  
HW22-25,  
HW29-32,  
HW35-37,  
HW40-42,  
HW45-47,  
HW50-52,  
HW55-57,  
Seat pad

**Betty**  
TK3

**Boomerang**  
HM1, HM2

**Margas**  
LC1, LC2,  
LC3

**Mayor**  
AJ5, AJ6

**Cloud**  
LN1, LN2,  
LN3.2, LN5,  
LN6, LN7

[BACK TO INDEX](#)

Fabric gr. 4

# Atlas

\* Click [here](#) to see all available colours.

\* Due to variations in screen calibration, the fabrics shown here may not be 100% true to colour.

**Brand**

Dedar

**Composition**

72% wool

27% cotton

1% nylon/polyamid

**Durability**

26.000 Martindale

**Pilling**

4/5 / ISO 12945

**Lightfastness**

4/5

**Produced In**

Italy

**Width**

128 cm (50.39")

**Weight**

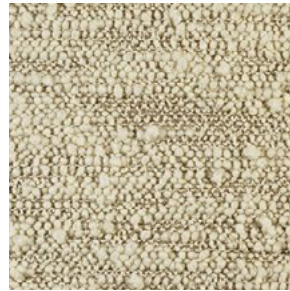
890 g/ml

**Fire Test**

- EN 1021 (part ½)
- FR-UK BS5852 CIGAR. TEST
- FR-UK BS5852 CIG. MATCH
- FR-UK BS5852 CRIB 5
- US. Cal. Bull 117-2013 w. treatment



001 Avorio



002 Naturale

---

**Available on**

**In Between**  
SK2, SK8,  
SK10

**Pavilion**  
AV3, AV4,  
AV12, AV13,  
AV6, AV11,  
AV8, AV14,  
AV10, AV15

**Betty**  
TK3

**Boomerang**  
HM1, HM2

**Wulff**  
ATD2, ATD3

**Mayor**  
AJ5, AJ6

**Little Petra**  
VB1, VB2

**Pouf**  
ATD1

Fabric gr. 4

# Campus

\* Click [here](#) to see all available colours.

\* Due to variations in screen calibration, the fabrics shown here may not be 100% true to colour.

**Brand**

Dedar

**Composition**

72% wool

27% cotton

1% nylon/polyamid

**Durability**

35.700 Martindale

**Pilling**

5 / ISO 12945

**Lightfastness**

6/7

**Produced In**

Italy

**Width**

140 cm (55.12")

**Weight**

800 g/ml

**Fire Test**

- FR-UK BS5852 CIGAR. TEST w. treatment
- FR-UK BS5852 CIG. MATCH w. treatment
- US. Cal. Bull 117-2013 w. treatment



001 Cielo Azzurro



003 Chiaroscuro

---

**Available on**

**Pavilion**

AV3, AV4,  
AV12, AV13,  
AV6, AV11,  
AV8, AV14,  
AV10, AV15

**Rely**

HW7-10,  
HW12-15,  
HW17-20,  
HW22-25,  
HW29-32,  
HW35-37,  
HW40-42,  
HW45-47,  
HW50-52,  
HW55-57,  
Seat pad

**Boomerang**

HM1, HM2

**Margas**

LC1, LC2,  
LC3

[BACK TO INDEX](#)



Fabric gr. 4

# Karakorum

\* Click [here](#) to see all available colours.

\* Due to variations in screen calibration, the fabrics shown here may not be 100% true to colour.

**Brand**

Dedar

**Composition**

42% wool  
33% viscose  
24% cotton  
1% nylon/polyamid

**Durability**

40.000 Martindale

**Pilling**

4/5 / ISO 12945

**Lightfastness**

6

**Produced In**

Italy

**Width**

130 cm (51.18")

**Weight**

1040 g/ml

**Fire Test**

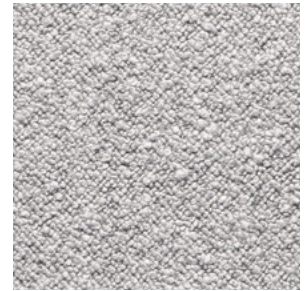
- EN 1021 (part ½)
- FR-UK BS5852 CIGAR. TEST
- FR-UK BS5852 CIG. MATCH
- FR-UK BS5852 CRIB 5
- US. Cal. Bull 117-2013



001 Ivory



003 Duna



004 Perla

**Available on**

**Catch**

JH1, JH2,  
JH15, JH13,  
JH14, JH16,  
JH17

**Elefy**

JH29, JH31,  
JH33, JH35,  
JH37

**In Between**

SK2, SK8,  
SK10

**Pavilion**

AV3, AV4,  
AV12, AV13,  
AV6, AV11,  
AV8, AV14,  
AV10, AV15

**Rely**

HW7-10,  
HW12-15,  
HW17-20,  
HW22-25,  
HW29-32,  
HW35-37,  
HW40-42,  
HW45-47,  
HW50-52,  
HW55-57,  
Seat pad

**Betty**

TK3

**Boomerang**

HM1, HM2

**Little Petra**

VB1, VB2

**Pouf**

ATD1

**Margas**

LC1, LC2,  
LC3

**Wulff**

ATD2, ATD3

**Loafer**

SC24, SC23,  
SC25, SC26

**Mayor**

AJ5, AJ6

**Cloud**

LN1, LN2,  
LN3.2, LN5,  
LN6, LN7

**Develius**

EV1-EV7

**Fly**

SC1, SC2,  
SC3, SC12,  
SC9, SC10

[BACK TO INDEX](#)



Fabric gr. 4

# Karandash

\* Click [here](#) to see all available colours.

\* Due to variations in screen calibration, the fabrics shown here may not be 100% true to colour.

**Brand**

Dedar

**Composition**

70% wool  
30% cotton

**Durability**

40.000 Martindale

**Pilling**

4/5 / ISO 12945

**Lightfastness**

5 / 6

**Produced In**

Italy

**Width**

130 cm (51.18")

**Weight**

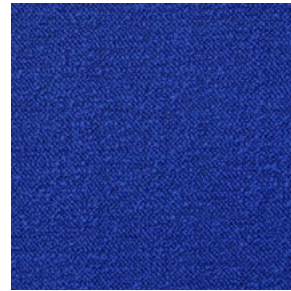
885 g/ml

**Fire Test**

- EN 1021 (part ½)
- FR-UK BS5852 CIGAR. TEST
- FR-UK BS5852 CIG. MATCH
- FR-UK BS5852 CRIB 5
- US. Cal. Bull 117-2013



005 Acier



006 Cobalt

---

**Available on**

**Catch**

JH1, JH2,  
JH15, JH13,  
JH14, JH16,  
JH17

**Elefy**

JH29, JH31,  
JH33, JH35,  
JH37

**In Between**

SK2, SK8,  
SK10

**Pavilion**

AV3, AV4,  
AV12, AV13,  
AV6, AV11,  
AV8, AV14,  
AV10, AV15

**Rely**

HW7-10,  
HW12-15,  
HW17-20,  
HW22-25,  
HW29-32,  
HW35-37,  
HW40-42,  
HW45-47,  
HW50-52,  
HW55-57,  
Seat pad

**Betty**

TK3

**Boomerang**

HM1, HM2

**Little Petra**

VB1, VB2

**Pouf**

ATD1

**Margas**

LC1, LC2,  
LC3

**Wulff**

ATD2, ATD3

**Loafer**

SC24, SC23,  
SC25, SC26

**Mayor**

AJ5, AJ6

**Cloud**

LN1, LN2,  
LN3.2, LN5,  
LN6, LN7

**Fly**

SC1, SC2,  
SC3, SC12,  
SC9, SC10

Fabric gr. 4

# Nouvelles Vagues

\* Click [here](#) to see all available colours.

\* Due to variations in screen calibration, the fabrics shown here may not be 100% true to colour.

**Brand**

Dedar

**Composition**

55% viscose

45% cotton

**Durability**

40.000 Martindale

**Pilling**

4/5 / ISO 12945

**Lightfastness**

5

**Produced In**

Italy

**Width**

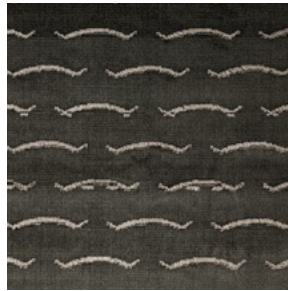
138 cm (54.33")

**Weight**

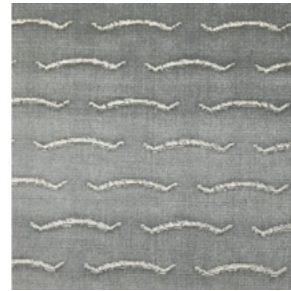
765 g/ml

**Fire Test**

- EN 1021 (part ½)
- FR-UK BS5852 CIGAR. TEST
- FR-UK BS5852 CIG. MATCH w. treatment
- FR-UK BS5852 CRIB 5 w. treatment
- US. Cal. Bull 117-2013



001 Petrified wood



002 Silver rock



006 Rubis

**Available on****Boomerang**

HM1, HM2

[BACK TO INDEX](#)

Fabric gr. 4

# Serafino

\* Click [here](#) to see all available colours.

\* Due to variations in screen calibration, the fabrics shown here may not be 100% true to colour.

**Brand**

Dedar

**Composition**

38% cotton  
33% viscose  
26% linen  
3% nylon/polyamid

**Durability**

29.000 Martindale

**Pilling**

3

**Lightfastness**

Light Colours: 6/7  
Dark Colours: 4

**Produced In**

Italy

**Width**

132 cm (51.97")

**Weight**

870 g/ml

**Fire Test**

- EN 1021 (part ½)
- FR-UK BS5852 CIGAR. TEST w. treatment
- FR-UK BS5852 CIG. MATCH w. treatment
- FR-UK BS5852 CRIB 5 w. treatment
- US. Cal. Bull 117-2013



002 Snow

---

**Available on**

**In Between**  
SK2, SK8,  
SK10

**Pavilion**  
AV3, AV4,  
AV12, AV13,  
AV6, AV11,  
AV8, AV14,  
AV10, AV15

**Rely**  
HW7-10,  
HW12-15,  
HW17-20,  
HW22-25,  
HW29-32,  
HW35-37,  
HW40-42,  
HW45-47,  
HW50-52,  
HW55-57,  
Seat pad

**Betty**  
TK3  
  
**Boomerang**  
HM1, HM2  
  
**Margas**  
LC1, LC2,  
LC3

**Little Petra**  
VB1, VB2  
  
**Pouf**  
ATD1  
  
**Wulff**  
ATD2, ATD3

**Loafer**  
SC24, SC23,  
SC25, SC26  
  
**Mayor**  
AJ5, AJ6

Fabric gr. 3

# Svevo

\* Click [here](#) to see all available colours.

\* Due to variations in screen calibration, the fabrics shown here may not be 100% true to colour.

## Brand

Dedar

## Composition

44% linen

26% wool

18% viscose

12% polyamide

## Durability

40.000 Martindale

## Pilling

3/4 ISO 12945

## Lightfastness

6 / 6

## Width

140 cm

## Weight

761 g/ml

## Fire Test

- BS 5852 (part 0)
- BS 5852 (part 1)
- Us. Cal. Bull 117-2013
- BS 5852 Source 5



002 Linen

---

## Available on

### Cloud

LN1, LN2,  
LN3.2, LN5,  
LN6, LN7

### Margas

LC1, LC2,  
LC3

Fabric gr. 2

# Chelsea

\* Click [here](#) to see all available colours.

\* Due to variations in screen calibration, the fabrics shown here may not be 100% true to colour.

**Brand**

Romo

**Composition**

100% linen

**Durability**

35.000 martindale

**Lightfastness**

6

**Produced In**

Turkey

**Width**

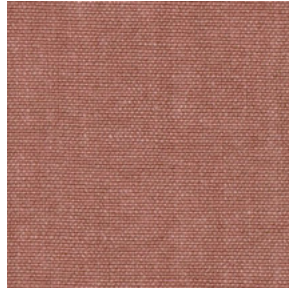
139 cm

**Weight**

500 (g/m<sup>2</sup>)

**Fire Test**

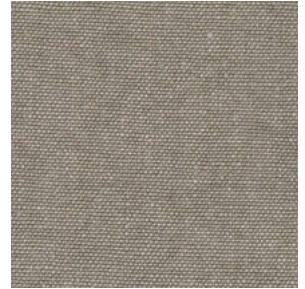
- BS 5852 PART 1 IGN 0 CIGARETTE
- BS 5852 PART 1 EXEMPT (WITH IGN 5 INTERLINER)
- EN1021 PART 1 UPHOLSTERY
- NFPA260
- CAL117



16 Vintage Rose



26 Rouge



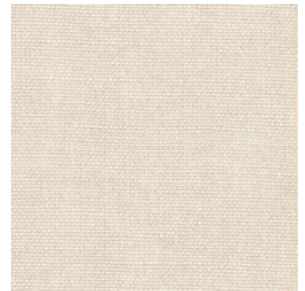
38 Stone



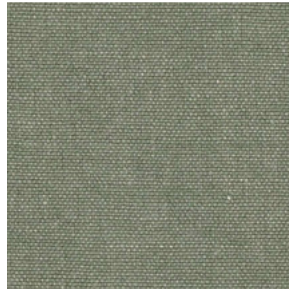
43 Anthracite



58 Linen



31 Cream



15 Sage



01 Denim

**Available on**

**Elefy**

JH29, JH31, JH33, JH35, JH37

**In Between**

SK2, SK8, SK10

**Pavilion**

AV3, AV4, AV12, AV13, AV6, AV11, AV8, AV14, AV10, AV15

**Rely**

HW7-10, HW12-15, HW17-20, HW22-25, HW29-32, HW35-37, HW40-42, HW45-47, HW50-52, HW55-57, Seat pad

**Betty**

TK3

**Boomerang**

HM1, HM2

**Loafer**

SC24, SC23, SC25, SC26

**Margas**

LC1, LC2, LC3

**Mayor**

AJ5, AJ6

**Cloud**

LN1, LN2, LN3.2, LN5, LN6, LN7

**Develius**

EV1-EV7

**Fly**

SC1, SC2, SC3, SC12, SC9, SC10



Fabric gr. 1

# Linara

\* Click [here](#) to see all available colours.

\* Due to variations in screen calibration, the fabrics shown here may not be 100% true to colour.

**Brand**

Romo

**Composition**

63% cotton  
37% linen

**Durability**

36.000 martindale

**Lightfastness**

6

**Produced In**

Italy

**Sustainability**

Oeko-tex

**Width**

140 cm. (55.1")

**Weight**

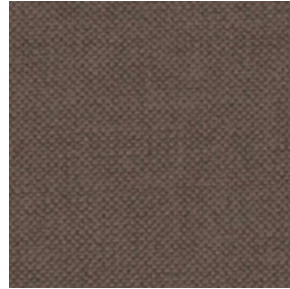
400 (g/m<sup>2</sup>)

**Fire Test**

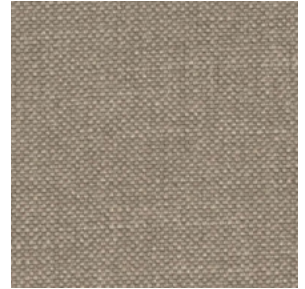
- BS 5852 PART 1 IGN 0 CIGARETTE
- BS 5852 PART 1 IGN 1 MATCH
- UKBS 5852 PART 1 EXEMPT (WITH IGN 5 INTERLINER)
- EN1021 PART 1 UPHOLSTERY
- EN1021 PARTS 1&2 UPHOLSTERY
- NFPA260
- CAL117



266 Stone



263 Coffee Bean



153 Earth



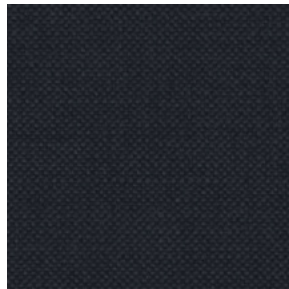
220 Sand



252 China Blue



223 Anthracite



164 Ebony



249 Spinach

**Available on**

**Elefy**

JH29, JH31,  
JH33, JH35,  
JH37

**In Between**

SK2, SK8,  
SK10

**Pavilion**

AV3, AV4,  
AV12, AV13,  
AV6, AV11,  
AV8, AV14,  
AV10, AV15

**Rely**

HW7-10,  
HW12-15,  
HW17-20,  
HW22-25,  
HW29-32,  
HW35-37,  
HW40-42,  
HW45-47,  
HW50-52,  
HW55-57,  
Seat pad

**Betty**

TK3

**Boomerang**

HM1, HM2

**Loafer**

SC24, SC23,  
SC25, SC26

**Margas**

LC1, LC2,  
LC3

**Mayor**

AJ5, AJ6

**Cloud**

LN1, LN2,  
LN3.2, LN5,  
LN6, LN7

**Develius**

EV1-EV7

**Fly**

SC1, SC2,  
SC3, SC12,  
SC9, SC10



Fabric gr. 2

# Loop

\* Click [here](#) to see all available colours.

\* Due to variations in screen calibration, the fabrics shown here may not be 100% true to colour.

**Brand**

Romo

**Composition**

46% acrylic  
23% wool  
15% cotton  
12% nylon/polyamid  
4% polyester

**Durability**

60.000 martindale

**Produced In**

Italy

**Width**

140 cm. (55.1")

**Weight**

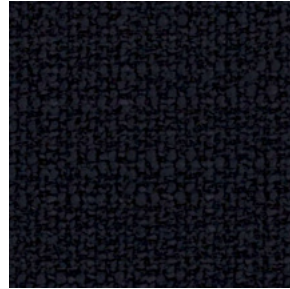
620 (g/m<sup>2</sup>)

**Fire Test**

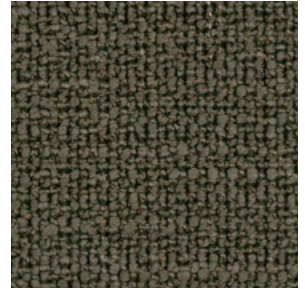
- EN1021 PART 1 UPHOLSTERY
- NFPA260
- CAL117



33 Cream



40 Marine



36 Olive

**Available on**

**Catch**

JH1, JH2,  
JH15, JH13,  
JH14, JH16,  
JH17

**Elefy**

JH29, JH31,  
JH33, JH35,  
JH37

**In Between**

SK2, SK8,  
SK10

**Pavilion**

AV3, AV4,  
AV12, AV13,  
AV6, AV11,  
AV8, AV14,  
AV10, AV15

**Rely**

HW7-10,  
HW12-15,  
HW17-20,  
HW22-25,  
HW29-32,  
HW35-37,  
HW40-42,  
HW45-47,  
HW50-52,  
HW55-57,  
Seat pad

**Betty**

TK3

**Boomerang**

HM1, HM2

**Little Petra**

VB1, VB2

**Pouf**

ATD1

**Wulff**

ATD2, ATD3

**Loafer**

SC24, SC23,  
SC25, SC26

**Mayor**

AJ5, AJ6

**Cloud**

LN1, LN2,  
LN3.2, LN5,  
LN6, LN7

**Develius**

EV1-EV7

**Fly**

SC1, SC2,  
SC3, SC12,  
SC9, SC10

Fabric gr. 1

# Orion

\* Click [here](#) to see all available colours.

\* Due to variations in screen calibration, the fabrics shown here may not be 100% true to colour.

**Brand**

Romo

**Composition**

100% polyester

**Durability**

100.000 martindale

**Produced In**

Belgium

**Width**

140 cm. (55.1")

**Weight**

590 (g/m<sup>2</sup>)

**Fire Test**

- BS 5852 PART 1 IGN 0 CIGARETTE
- BS 5852 PART 1 IGN 1 MATCH
- BS 5852 PART 2 IGN 5 CRIB CONTRACT UPHOLSTERY
- EN1021 PART 1 UPHOLSTERY
- EN1021 PARTS 1&2 UPHOLSTERY
- NFPA260
- CAL117
- IMO8 UPHOLSTERY



36 Nuit



52 Slate



64 Mineral



12 Swedish Grey



70 Elephant

---

**Available on**

**Develius**  
EV1-EV7

**Fly**  
SC1, SC2,  
SC3, SC12,  
SC9, SC10

Fabric gr. 2

# Ruskin

\* Click [here](#) to see all available colours.

\* Due to variations in screen calibration, the fabrics shown here may not be 100% true to colour.

**Brand**

Romo

**Composition**

70% viscose

15% linen

10% wool

5% nylon/polyamid

**Durability**

60.000 martindale

**Produced In**

Italy

**Width**

140 cm. (55.1")

**Weight**

600 (g/m<sup>2</sup>)

**Fire Test**

- BS 5852 PART 1 IGN 0 CIGARETTE
- BS 5852 PART 1 EXEMPT (WITH IGN 5 INTERLINER)
- EN1021 PART 1 UPHOLSTERY
- EN1021 PARTS 1&2 UPHOLSTERY
- NFPA260



07 Silver Birch



14 Zirconium



33 Nori

**Available on**

**Catch**

JH1, JH2,  
JH15, JH13,  
JH14, JH16,  
JH17

**Elefy**

JH29, JH31,  
JH33, JH35,  
JH37

**In Between**

SK2, SK8,  
SK10

**Pavilion**

AV3, AV4,  
AV12, AV13,  
AV6, AV11,  
AV8, AV14,  
AV10, AV15

**Rely**

HW7-10,  
HW12-15,  
HW17-20,  
HW22-25,  
HW29-32,  
HW35-37,  
HW40-42,  
HW45-47,  
HW50-52,  
HW55-57,  
Seat pad

**Betty**

TK3

**Boomerang**

HM1, HM2

**Loafer**

SC24, SC23,  
SC25, SC26

**Margas**

LC1, LC2,  
LC3

**Mayor**

AJ5, AJ6

**Cloud**

LN1, LN2,  
LN3.2, LN5,  
LN6, LN7

**Develius**

EV1-EV7

**Fly**

SC1, SC2,  
SC3, SC12,  
SC9, SC10

Fabric gr. 2

# Ritz

\* Click [here](#) to see all available colours.

\* Due to variations in screen calibration, the fabrics shown here may not be 100% true to colour.

**Brand**

Nevotex

**Composition**

83% cotton  
9% modal  
8% polyester

**Durability**

100.000 martindale

**Pilling**

> 4 (ISO 105-X12)

**Lightfastness**

≥ 5 (ISO 105-B02)

**Produced In**

Estonia

**Sustainability**

ISO 9001, ISO 14001,  
Oeko-tex 2005070

**Width**

140 cm (55")

**Weight**

460 g/m<sup>2</sup>

**Fire Test**

• EN 1021 - 1



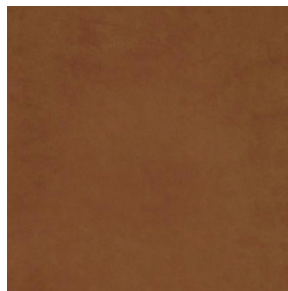
3804 Mörkt vinröd



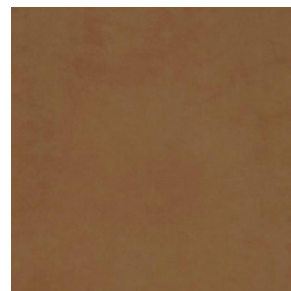
3247 Mörkröd



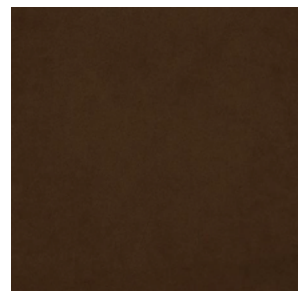
1620 Sand



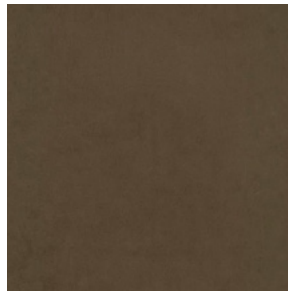
4700 Mörkbeige



4744 Kaki



8469 Brun



0504 Grå-grön



4441 Ljusbeige

**Available on**

**Catch**

JH1, JH2,  
JH15, JH13,  
JH14, JH16,  
JH17

**Elefy**

JH29, JH31,  
JH33, JH35,  
JH37

**In Between**

SK2, SK8,  
SK10

**Pavilion**

AV3, AV4,  
AV12, AV13,  
AV6, AV11,  
AV8, AV14,  
AV10, AV15

**Rely**

HW7-10,  
HW12-15,  
HW17-20,  
HW22-25,  
HW29-32,  
HW35-37,  
HW40-42,  
HW45-47,  
HW50-52,  
HW55-57,  
Seat pad

**Betty**

TK3

**Boomerang**

HM1, HM2

**Loafer**

SC24, SC23,  
SC25, SC26

**Mayor**

AJ5, AJ6

**Margas**

LC1, LC2,  
LC3

**Cloud**

LN1, LN2,  
LN3.2, LN5,  
LN6, LN7

**Develius**

EV1-EV7

**Fly**

SC1, SC2,  
SC3, SC12,  
SC9, SC10

Fabric gr. 2

# Ritz Trend

\* Click [here](#) to see all available colours.

\* Due to variations in screen calibration, the fabrics shown here may not be 100% true to colour.

**Brand**

Nevotex

**Composition**

83% cotton  
9% modal  
8% polyester

**Durability**

100.000 martindale

**Pilling**

> 4 (ISO 105-X12)

**Lightfastness**

≥ 5 (ISO 105-B02)

**Produced In**

Estonia

**Sustainability**

ISO 9001, ISO 14001,  
Oeko-tex 2005070

**Width**

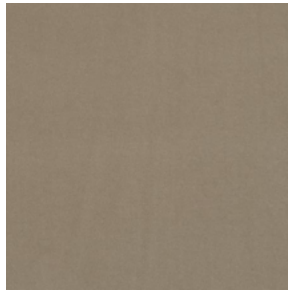
140 cm (55")

**Weight**

460 g/m<sup>2</sup>

**Fire Test**

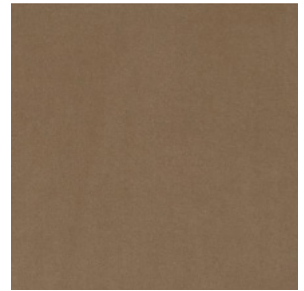
• EN 1021 - 1



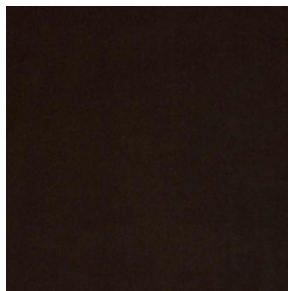
0206 Cream



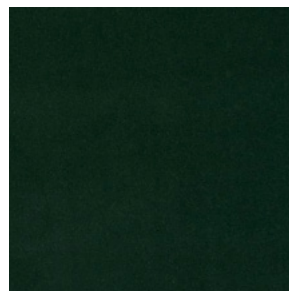
0546 Clay



7703 Latte



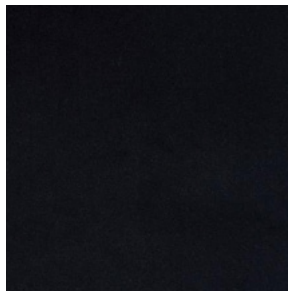
8513 Java



6381 Juniper



0351 Warm grey



0710 Hematite

**Available on**

**Catch**

JH1, JH2,  
JH15, JH13,  
JH14, JH16,  
JH17

**Elefy**

JH29, JH31,  
JH33, JH35,  
JH37

**In Between**

SK2, SK8,  
SK10

**Pavilion**

AV3, AV4,  
AV12, AV13,  
AV6, AV11,  
AV8, AV14,  
AV10, AV15

**Rely**

HW7-10,  
HW12-15,  
HW17-20,  
HW22-25,  
HW29-32,  
HW35-37,  
HW40-42,  
HW45-47,  
HW50-52,  
HW55-57,  
Seat pad

**Betty**

TK3

**Boomerang**

HM1, HM2

**Loafer**

SC24, SC23,  
SC25, SC26

**Mayor**

AJ5, AJ6

**Cloud**

LN1, LN2,  
LN3.2, LN5,  
LN6, LN7

**Develius**

EV1-EV7

**Fly**

SC1, SC2,  
SC3, SC12,  
SC9, SC10

[BACK TO INDEX](#)

Fabric gr. 2

# Velvet

\* Click [here](#) to see all available colours.

\* Due to variations in screen calibration, the fabrics shown here may not be 100% true to colour.

**Brand**

&Tradition

**Composition**

83% cotton  
9% modal  
8% polyester

**Durability**

100.000 martindale

**Pilling**

> 4 (ISO 105-X12)

**Lightfastness**

≥ 5 (ISO 105-B02)

**Produced In**

Estonia

**Sustainability**

ISO 9001, ISO 14001,  
Oeko-tex 2005070

**Width**

140 cm

**Weight**

460 g/m<sup>2</sup>

**Fire Test**

• EN 1021 - 1



01 Forest



07 Cinnamon



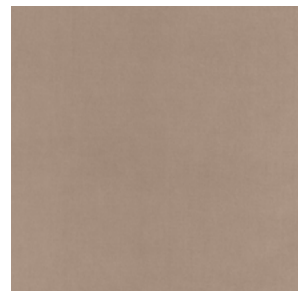
08 Almond



10 Twilight



11 Stone



13 Ivory

**Available on**

**Catch**

JH1, JH2,  
JH15, JH13,  
JH14, JH16,  
JH17

**Elefy**

JH29, JH31,  
JH33, JH35,  
JH37

**In Between**

SK2, SK8,  
SK10

**Pavilion**

AV3, AV4,  
AV12, AV13,  
AV6, AV11,  
AV8, AV14,  
AV10, AV15

**Rely**

HW7-10,  
HW12-15,  
HW17-20,  
HW22-25,  
HW29-32,  
HW35-37,  
HW40-42,  
HW45-47,  
HW50-52,  
HW55-57,  
Seat pad

**Betty**

TK3

**Boomerang**

HM1, HM2

**Loafer**

SC24, SC23,  
SC25, SC26

**Mayor**

AJ5, AJ6

**Margas**

LC1, LC2,  
LC3

**Cloud**

LN1, LN2,  
LN3.2, LN5,  
LN6, LN7

**Develius**

EV1-EV7

**Fly**

SC1, SC2,  
SC3, SC12,  
SC9, SC10



# Hot Madison

\* Click [here](#) to see all available colours.

\* Due to variations in screen calibration, the fabrics shown here may not be 100% true to colour.

**Brand**

JAB

**Composition**

63% cotton

37% linen

**Durability**

55.000 martindale

**Pilling**

4

**Lightfastness**

4-5

**Produced In**

Italy

**Width**

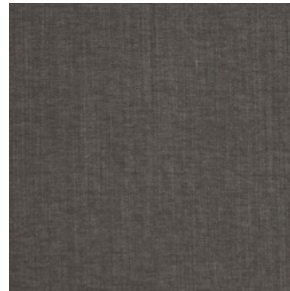
140 cm (55")

**Fire Test**

- EN 1021 (part1)
- Crib 5 treatable
- NFPA 260
- US. Cal. Bull 117-2013



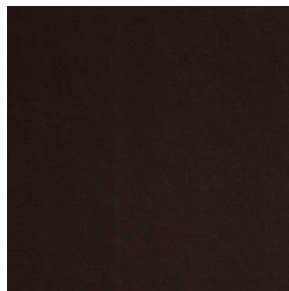
021



093



094



884



133

---

**Available on**

**Fly**

SC1, SC2,  
SC3, SC12,  
SC9, SC10

# Sheepskin

\* Click [here](#) to see all available colours.

\* Due to variations in screen calibration, the fabrics shown here may not be 100% true to colour.

## Brand

Skandilock

## Composition (Raw material)

Australian Crossbred  
Lamb/sheep

## Pilling

Dry: 4-5 / Wet: 3-4

## Lightfastness

ISO 105-B02: 2014  
Classic collection: >5  
Standard collection: >5  
Limited collection: >5  
Off-White (non-dyed): 4-5  
Ruby: 4-5  
Moonlight: 3-4

## Sustainability

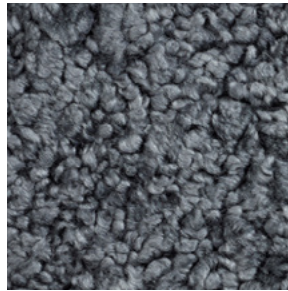
TBC

## Weight (thickness)

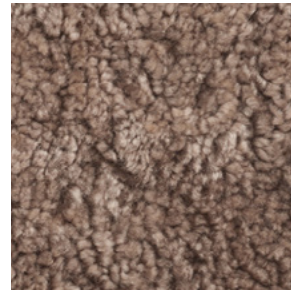
1-3 mm

## Fire Test

- EN1021-1
- EN1021-21
- CAL. TB117 (US)
- FAR §23.853 (AUS)



14 Charcoal



07 Sahara



02 Offwhite



09 Moonlight

---

## Available on

**Little Petra**  
VB1, VB2

**Pouf**  
ATD1

**Wulff**  
ATD2, ATD3

**Loafer**  
SC24, SC23,  
SC25, SC26

**Mayor**  
AJ5, AJ6

# *Leather*

Leather gr. 1

# Regina

\* Click [here](#) to see all available colours.

\* Due to variations in screen calibration, the fabrics shown here may not be 100% true to colour.

## Brand

CA-MO Leathers

## Composition

### (Raw material)

Grain leather from European raw hides

## Durability

30.000 martindale

## Tear strength

UNI EN ISO 3377-1 /  
≥ 20 N

## Lightfastness

≥ 4

## Produced In

Denmark

## Sustainability

All CAMO leather is dyed through and produced without use of PCP and CFC. Our leather does not contain chrome VI.

All articles observe the standards for the REACH declaration.

## Width

4,5-5m<sup>2</sup>

## Weight

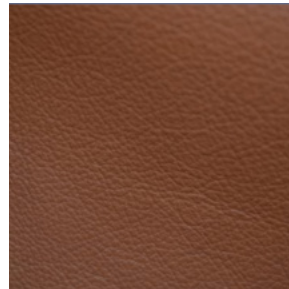
1,2-1,4 mm

## Fire Test

- UNI EN ISO 1021-1/2
- BS5852 part 0 & 1
- 1990 Sec. 4 NI/0-1
- California T.B.117



RE4012S Sand



RE4003S Kelato Cognac



RE4001S Black

---

## Available on

### Cloud

LN1, LN2,  
LN3.2, LN5,  
LN6, LN7

Leather gr. 2

# Silk

\* Click [here](#) to see all available colours.

\* Due to variations in screen calibration, the fabrics shown here may not be 100% true to colour.

**Brand**

CA-MO Leathers

**Composition  
(Raw material)**

European rawhides

**Durability**

30.000 martindale

**Tear strength**

UNI EN ISO 3377-1 /

IUP 40 / ≥ 20 N / mm

**Lightfastness**

3

**Produced In**

Denmark

**Sustainability**

All CAMO leather is dyed through and produced without use of PCP and CFC. Our leather does not contain chrome VI.

All articles observe the standards for the REACH declaration.

**Width**

4,5-5m<sup>2</sup>

**Weight**

1,0-1,2 mm

**Fire Test**

- BS5852:1979 UK Match & Cigarette test
- TB 117 California



SIL0691 Stone



SIL0250 Cognac



SIL0842 Black

**Available on**

**Catch**

JH1, JH2,  
JH15, JH13,  
JH14, JH16,  
JH17

**Elefy**

JH29, JH31,  
JH33, JH35,  
JH37

**In Between**

SK2, SK8,  
SK10

**Pavilion**

AV3, AV4,  
AV12, AV13,  
AV6, AV11,  
AV8, AV14,  
AV10, AV15

**Rely**

HW7-10,  
HW12-15,  
HW17-20,  
HW22-25,  
HW29-32,  
HW35-37,  
HW40-42,  
HW45-47,  
HW50-52,  
HW55-57,  
Seat pad

**Betty**

TK3

**Loafer**

SC24, SC23,  
SC25, SC26

**Mayor**

AJ5, AJ6

**Cloud**

LN1, LN2,  
LN3.2, LN5,  
LN6, LN7

**Develius**

EV1-EV7

Leather gr. 1

# Sydney

\* Click [here](#) to see all available colours.

\* Due to variations in screen calibration, the fabrics shown here may not be 100% true to colour.

**Brand**

CA-MO Leathers

**Composition  
(Raw material)**

Australian and  
North American raw hides

**Durability**

30.000 martindale

**Tear strength**

UNI EN ISO 3377-1 /  
IUP 40 / ≥ 20 N

**Lightfastness**

5

**Produced In**

Denmark

**Sustainability**

All CAMO leather is dyed through and produced without use of PCP and CFC. Our leather does not contain chrome VI. All articles observe the standards for the REACH declaration.

**Width**

4,5-5m<sup>2</sup>

**Weight**

0,9-1,1 mm

**Fire Test**

- UNI EN ISO 1021-1/2
- BS5852 1990 Sec. 4 NI/0-1
- California T.B.117



SY5432 Beige



SY5529 Nougat Brown



SY3394 Nature

**Available on**

**Catch**

JH1, JH2,  
JH15, JH13,  
JH14, JH16,  
JH17

**Elefy**

JH29, JH31,  
JH33, JH35,  
JH37

**In Between**

SK2, SK8,  
SK10

**Pavilion**

AV3, AV4,  
AV12, AV13,  
AV6, AV11,  
AV8, AV14,  
AV10, AV15

**Rely**

HW7-10,  
HW12-15,  
HW17-20,  
HW22-25,  
HW29-32,  
HW35-37,  
HW40-42,  
HW45-47,  
HW50-52,  
HW55-57,  
Seat pad

**Betty**

TK3

**Loafer**

SC24, SC23,  
SC25, SC26

**Mayor**

AJ5, AJ6

[BACK TO INDEX](#)



Leather gr. 2

# Baltique

\* Click [here](#) to see all available colours.

\* Due to variations in screen calibration, the fabrics shown here may not be 100% true to colour.

## Brand

Elmo Leather

## Composition

### (Raw material)

Grain leather from  
Scandinavian cattle

## Durability

### (Tear strength)

DIN 53329-A / 20 N

## Lightfastness

3

## Produced In

Sweden

## Sustainability

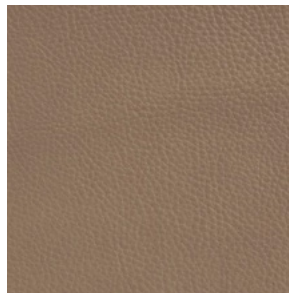
Clean water tanning  
technology

## Width (Thickness)

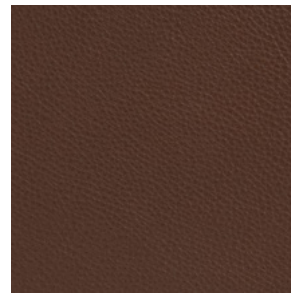
1.3-1.5 mm

## Fire Test

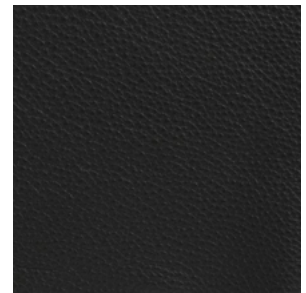
- TB 117-2013 (section 1)
- EN 1021-1:1993
- ISO 8191-1
- ISO 8191-2



12036



33037



99011

---

## Available on

### Cloud

LN1, LN2,  
LN3.2, LN5,  
LN6, LN7

Leather gr. 2

# Rustical

\* Click [here](#) to see all available colours.

\* Due to variations in screen calibration, the fabrics shown here may not be 100% true to colour.

**Brand**

Elmo Leather

**Composition**

**(Raw material)**

Grain leather from  
Scandinavian cattle

**Durability**

**(Tear strength)**

DIN 53329-A / 20 N

**Lightfastness**

3

**Produced In**

Sweden

**Sustainability**

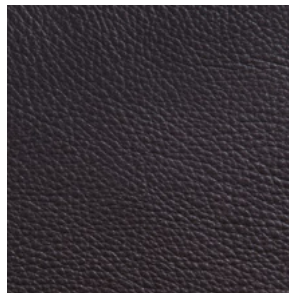
Clean water tanning  
technology

**Width (Thickness)**

1.3-1.5 mm

**Fire Test**

- CA TB 117-2013
- EN 1021 - 1,2
- IMO 2010 FTP Code  
Part 8 (IMO652)
- ISO 8191 - 1,2
- BS5852 part 1
- US. Cal. Bull. 117-2013



93327



33286

---

**Available on**

**Cloud**

LN1, LN2,  
LN3.2, LN5,  
LN6, LN7

Leather gr. 2

# Soft

\* Click [here](#) to see all available colours.

\* Due to variations in screen calibration, the fabrics shown here may not be 100% true to colour.

## Brand

Elmo Leather

## Composition

### (Raw material)

Grain leather from  
Scandinavian cattle

## Durability

### (Tear strength)

DIN 53329-A / 20 N

## Lightfastness

6

## Produced In

Sweden

## Sustainability

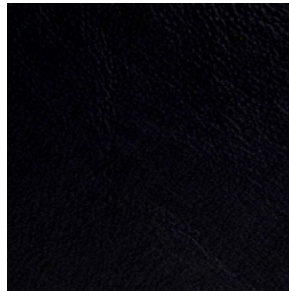
Clean water tanning  
technology

## Width (Thickness)

1.1-1.3 mm

## Fire Test

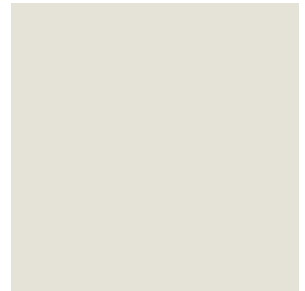
- ASTM E 662 SMP  
800-C
- BS 5852 crib 5
- CA TB 117-2013
- Chines B1
- DIN 4102 - 1 (B1)
- DIN 53438 part 3
- ECE R118
- ECE R118 Annex 7  
(May 2020)
- EN 1021 - 1,2
- IMO 2010 FTP  
Code Part 8 (IMO652)
- ISO 1716
- ISO 3795
- ISO 8191 - 1,2
- NF P 92-503
- Önorm B 3825
- RDWC-CP1-04
- UNI 9175



99999



13072



12080

---

## Available on

### Elefy

JH29, JH31,  
JH33, JH35,  
JH37

Leather gr. 3

# Nabuk

\* Click [here](#) to see all available colours.

\* Due to variations in screen calibration, the fabrics shown here may not be 100% true to colour.

**Brand**

Peneloppi Oggi

**Composition**

Aniline European bovine

**Durability**

>= 10000 cycles

**Lightfastness**

>= 3

**Produced In**

Italy

**Width (Average size)**

>= sqm 5.0

**Weight (Thickness)**

1.1-1.3 mm

**Fire Test**

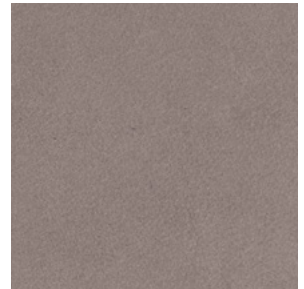
- ISO 1021:1-2
- BS 5852:0-1
- IMO MED FTP8
- TB117



3407 Mogano



3405 Tartufo



3415 Acciaio



3410 Wengè



3424 Bordeaux

**Available on**

**Catch**

JH1, JH2,  
JH15, JH13,  
JH14, JH16,  
JH17

**Elefy**

JH29, JH31,  
JH33, JH35,  
JH37

**In Between**

SK2, SK8,  
SK10

**Pavilion**

AV3, AV4,  
AV12, AV13,  
AV6, AV11,  
AV8, AV14,  
AV10, AV15

**Rely**

HW7-10,  
HW12-15,  
HW17-20,  
HW22-25,  
HW29-32,  
HW35-37,  
HW40-42,  
HW45-47,  
HW50-52,  
HW55-57,  
Seat pad

**Betty**

TK3

**Loafer**

SC24, SC23,  
SC25, SC26

**Mayor**

AJ5, AJ6

**Cloud**

LN1, LN2,  
LN3.2, LN5,  
LN6, LN7

[BACK TO INDEX](#)

Leather gr. 3

# Sørensen Duet

\* Click [here](#) to see all available colours.

\* Due to variations in screen calibration, the fabrics shown here may not be 100% true to colour.

**Brand**

Sørensen Leather

**Composition  
(Raw material)**

Aniline leather

**Durability  
(Tear strength)**

>20N / BS EN ISO 3377

**Pilling**

≥3 / BS EN ISO 11640

**Lightfastness**

≥ BWS 3 /  
BS EN ISO 105-B02

**Produced In**

European rawhide, typically from Italy, Germany, Austria, Switzerland and Scandinavia

**Sustainability & Certificates**

- PCP: According to EU Council Directive 76/769/EEC
- AZO dyes: According to EU Council Directive 76/769/EEC
- Our leather does not contain chrome VI.
- REACH: According to European Community Regulation on chemicals and their safe use (EC 1907/2006)

**Width (Size)**

4.0-5.0 m<sup>2</sup>

**Weight (Thickness)**

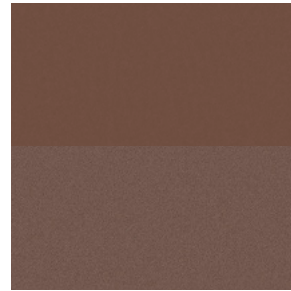
1.1-1.3 mm

**Fire Test**

- BS EN 1021-1 and 2
- TB 117-2013  
(only applies to Nubuck side, not suede side)



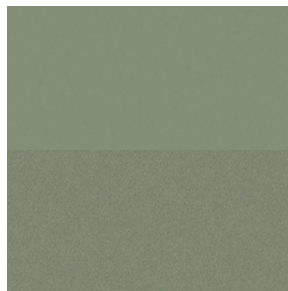
30241 Dark Brown



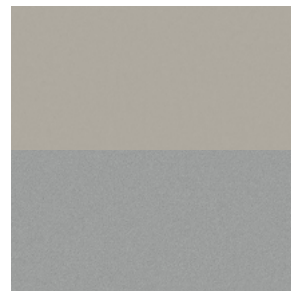
30238 Cedar



30239 Gold



30235 Jade



30232 Moon

**Available on**

**Elefy**

JH29, JH31,  
JH33, JH35,  
JH37

**Pavilion**

AV3, AV4,  
AV12, AV13,  
AV6, AV11,  
AV8, AV14,  
AV10, AV15

**Loafer**

SC24, SC23,  
SC25, SC26

**Mayor**

AJ5, AJ6

**Cloud**

LN1, LN2,  
LN3.2, LN5,  
LN6, LN7

**Develius**

EV1-EV7

**Fly**

SC1, SC2,  
SC3, SC12,  
SC9, SC10

[BACK TO INDEX](#)



**&Tradition**  
Kronprinsessegade 4  
DK - 1306 Copenhagen K  
info@andtradition.com  
andtradition.com

© &Tradition 2022