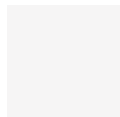


# PIX

**Finiture**  
**Materialien**  
**Finitions**  
**Acabados**  
**仕上げ**

**Pix table**

**MDF**

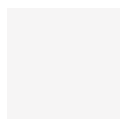


**M02**



**M04**

**Metalli  
Metals  
Metalle  
Métal  
Metal**



**V12 - matt**



**V39 - matt**



CHROME FREE

ELMOSOFT è una pelle semi-anilina, morbida e flessibile. La sua morbidezza associata alla sua robustezza e ad una vasta gamma di colori disponibili rendono la pelle Elmosoft adatta ad un utilizzo nel contract. Punture di insetti e cicatrici visibili contribuiscono a valorizzare le caratteristiche di unicità ed eleganza di questa pelle.

ELMOSOFT is a soft and pliable Semi-Aniline leather. Outstanding comfort combined with excellent durability and an extensive shade card, makes it very suitable for the public environment. Visible insect-bites and scars from healed wounds add to the elegant quality of the leather.

ELMOSOFT. Weiches, geschmeidiges Semi-Anilinleder, Ein sehr strapazierfähiges und im Griff komfortables Leder in reicher Farbauswahl, hervorragend geeignet für Objektausstattungen. Sichtbar erhaltene Insektenstiche und kleine vernarbte Wunden betonen die naturechte Eleganz.

ELMOSOFT est un cuir semi-aniline, souple et doux. Son confort élevé, associé à une grande robustesse et à une vaste gamme de coloris disponibles, le rend particulièrement indiqué pour les collectivités. Les piqûres d'insectes et les cicatrices visibles contribuent à rehausser le caractère élégant du cuir.

ELMOSOFT es una piel semianilina suave y flexible. Su destacable confort combinado con excelente durabilidad y una amplia gama de colores, la hacen muy adecuada para ambientes públicos. Picaduras de insectos visibles y cicatrices de heridas contribuyen a valorar la elegante calidad de la piel.

Arper grade ES



ES00100



ES00109



ES00118



ES01003



ES01021



ES01037



ES01043



ES01061



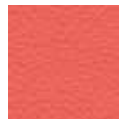
ES01085



ES02092



ES03009



ES05145



ES07070



ES07071



ES08039



ES08055



ES11033



ES11049



ES11060



ES11062



ES11073



ES13048



ES13070



ES13072



ES13075



ES13087



ES16007



ES16018



ES17027



ES22024



ES22030



ES22034



ES33001



ES33004



ES33077



ES35126



ES43054



ES44012



ES44023



ES45035



ES45043



ES45065



ES45021



ES45033



ES45035



ES55002



ES66006



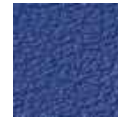
ES71017



ES75013



ES76003



ES77078



ES77127



ES77158



ELMOSOFT è una pelle semi-anilina, morbida e flessibile. La sua morbidezza associata alla sua robustezza e ad una vasta gamma di colori disponibili rendono la pelle Elmosoft adatta ad un utilizzo nel contract. Punture di insetti e cicatrici visibili contribuiscono a valorizzare le caratteristiche di unicità ed eleganza di questa pelle.

ELMOSOFT is a soft and pliable Semi-Aniline leather. Outstanding comfort combined with excellent durability and an extensive shade card, makes it very suitable for the public environment. Visible insect-bites and scars from healed wounds add to the elegant quality of the leather.

ELMOSOFT. Weiches, geschmeidiges Semi-Anilinleder, Ein sehr strapazierfähiges und im Griff komfortables Leder in reicher Farbauswahl, hervorragend geeignet für Objektausstattungen. Sichtbar erhaltene Insektenstiche und kleine vernarbte Wunden betonen die naturechte Eleganz.

ELMOSOFT est un cuir semi-aniline, souple et doux. Son confort élevé, associé à une grande robustesse et à une vaste gamme de coloris disponibles, le rend particulièrement indiqué pour les collectivités. Les piqûres d'insectes et les cicatrices visibles contribuent à rehausser le caractère élégant du cuir.

ELMOSOFT es una piel semianilina suave y flexible. Su destacable confort combinado con excelente durabilidad y una amplia gama de colores, la hacen muy adecuada para ambientes públicos. Picaduras de insectos visibles y cicatrices de heridas contribuyen a valorar la elegante calidad de la piel.

Arper grade  
ES



ES87025



ES87033



ES88058



ES88059



ES91102



ES91118



ES93068



ES93099



ES93109



ES93121



ES93129



ES95006



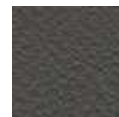
ES97038



ES98015



ES98047



ES98087



ES98087



NEOCOAST  
Soft leather  
Weichleder  
Cuir souple  
Piel  
Arper grade  
H



P400114



P402061



P412097



P418008



P443041



P443084



P444015



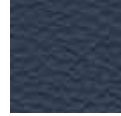
P445024



P455058



P471010



P477022



P477035



P488017



P491097



P491100



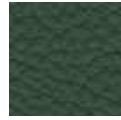
P493090



P495042



P498016



P498043



P499076

Pelle Fiore  
Soft leather  
Weichleder  
Cuir souple  
Piel

Arper grade  
J



PF00001



PF00003



PF00004



PF00007



PF00014



PF00015



PF00016



PF00017



PF00018



PF00019



PF00020



**SPRADLING®**

Valencia

Tessuto spalmato Valencia  
Coated fabric Valencia  
Beschichtete Textilien Valencia  
Tissus enduits Valencia  
Tejido recubierto Valencia

Arper grade  
B



VL02020



VL00001



VL00002



VL00020



VL00033



VL00034



VL00035



VL01001



VL01048



VL01049



VL01050



VL02001



VL02002



VL02008



VL02021



VL02062



VL02074



VL02075



VL02106



VL02107



VL02108



VL02110



VL02111



VL02112



VL02113



VL02114



VL02115



VL02116



VL02117



VL02119



VL02522



VL03001



VL03067



VL03068



VL03069



VL04001



VL04002



VL04003



VL04040



VL04041



VL04042



VL04043



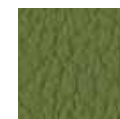
VL04044



VL04045



VL04052



VL05001



VL05002



VL05032



VL05041



VL05056



VL05057



VL05065



VL05069





**SPRADLING®**

Valencia

Tessuto spalmato Valencia  
Coated fabric Valencia  
Beschichtete textilien Valencia  
Tissus enduits Valencia  
Tejido recubierto Valencia

Arper grade

**B**



VL05451



VL06003



VL06012



VL06013



VL06019



VL06438



VL07001



VL08032



VL08415



VL08438



VL09001



VL09035



VL09245



VL09607





**SPRADLING®**

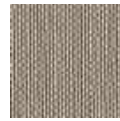
Silvertex

Arper grade

C



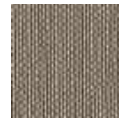
SX00001



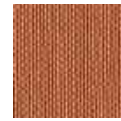
SX00002



SX00005



SX00009



SX00013



SX00073



SX01010



SX01014



SX01051



SX01077



SX01078



SX02003



SX02011



SX02012



SX02016



SX02064



SX02089



SX02090



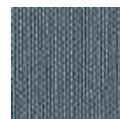
SX02091



SX02092



SX02093



SX02094



SX02095



SX02096



SX02097



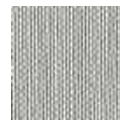
SX02098



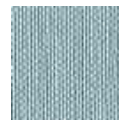
SX02099



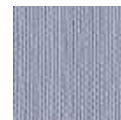
SX02100



SX02101



SX02102



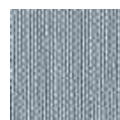
SX02103



SX02104



SX02105



SX02318



SX03001



SX03007



SX03066



SX03067



SX03068



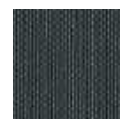
SX03352



SX03375



SX04001



SX04002



SX04003



SX04004



SX04010



SX04011



SX04012



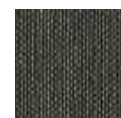
SX04024



SX05008



SX05009



SX05010



SX05019



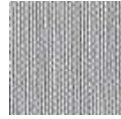
**SPRADLING®**

Silvertext

Arper grade  
C



SX05020



SX05039



SX05063



SX05468



SX06004



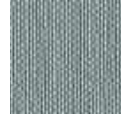
SX06061



SX06062



SX06065



SX06434



SX07001



SX07002



SX07251



SX09001



SX09002



SX09243

## kvadrat

Atom

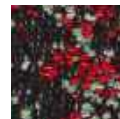
Arper grade  
M



AM00124



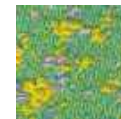
AM00194



AM00574



AM00774



AM00944



AM00964

## kvadrat

Azure Outdoor

Arper grade  
E



AZ00104



AZ00124



AZ00204



AZ00214



AZ00324



AZ00394



AZ00454



AZ00674



AZ00704



AZ00754



AZ00794



AZ00924



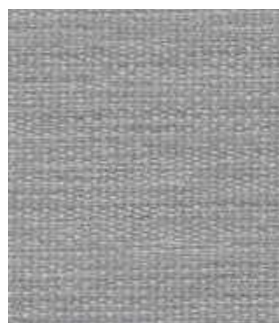
AZ00984

# kvadrat

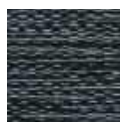
Balder 3

Arper grade

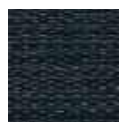
I



B100132



B100152



B100192



B100212



B100382



B100432



B100542



B100562



B100612



B100682



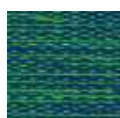
B100692



B100782



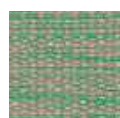
B100792



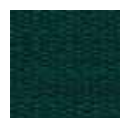
B100862



B100912



B100942



B100982



B101775



B102635

# kvadrat

Canvas 2

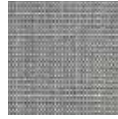


Kvadrat's Canvas 2 has been awarded the EU Ecolabel

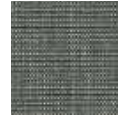
Arper grade  
D



CV00114



CV00124



CV00134



CV00154



CV00174



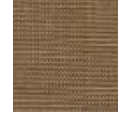
CV00216



CV00224



CV00244



CV00254



CV00264



CV00356



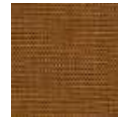
CV00364



CV00374



CV00414



CV00424



CV00446



CV00454



CV00546



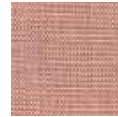
CV00556



CV00566



CV00576



CV00614



CV00644



CV00654



CV00666



CV00674



CV00684



CV00694



CV00716



CV00726



CV00734



CV00746



CV00764



CV00786



CV00794



CV00836



CV00854



CV00926



CV00936



CV00946



CV00954



CV00964



CV00974



CV00984



CV00996

**kvadrat**

Divina 3



Kvadrat's Divina 3 has been awarded the EU Ecolabel

Arper grade  
**G**



DV00171



DV00106



DV00154



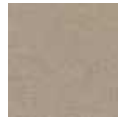
DV00173



DV00181



DV00191



DV00224



DV00236



DV00246



DV00334



DV00346



DV00356



DV00376



DV00384



DV00393



DV00426



DV00444



DV00462



DV00526



DV00536



DV00542



DV00552



DV00562



DV00584



DV00623



DV00626



DV00636



DV00652



DV00662



DV00671



DV00666



DV00676



DV00684



DV00686



DV00691



DV00692



DV00696



DV00712



DV00742



DV00756



DV00782



DV00791



DV00793



DV00826



DV00836



DV00846



DV00856



DV00876



DV00886



DV00893



DV00922



DV00936



DV00944



DV00956



DV00966



DV00984

**arper**

**kvadrat**

Divina MD

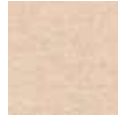


Kvadrat's Divina MD has been awarded the EU Ecolabel

Arper grade  
**G**



DI00193



DI00203



DI00213



DI00293



DI00343



DI00353



DI00363



DI00413



DI00433



DI00453



DI00613



DI00633



DI00653



DI00673



DI00683



DI00713



DI00733



DI00743



DI00753



DI00773



DI00783



DI00813



DI00843



DI00873



DI00913



DI00943



DI00973

**arper**

# kvadrat

Divina Melange 3



Kvadrat's Divina Melange 3 has been awarded the EU Ecolabel

Arper grade  
G



DM00120



DM00147



DM00170



DM00180



DM00227



DM00237



DM00260



DM00277



DM00280



DM00367



DM00427



DM00457



DM00467



DM00471



DM00517



DM00527



DM00547



DM00557



DM00567



DM00571



DM00581



DM00597



DM00617



DM00620



DM00647



DM00677



DM00687



DM00731



DM00747



DM00757



DM00777



DM00787



DM00821



DM00871



DM00917



DM00937



DM00967



DM00977

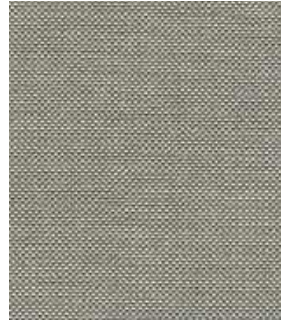
**kvadrat**

Field 2

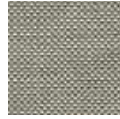


Kvadrat's Field 2  
has been awarded  
the EU Ecolabel

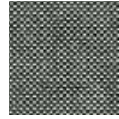
Arper grade  
B



FI00123



FI00132



FI00142



FI00173



FI00182



FI00192



FI00222



FI00233



FI00242



FI00343



FI00373



FI00443



FI00463



FI00623



FI00643



FI00662



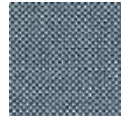
FI00663



FI00673



FI00693



FI00723



FI00733



FI00763



FI00773



FI00782



FI00793



FI00843



FI00933



FI00943



FI00963



FI00983



**kvadrat**

Fiord 2 (EU Ecolabel)



Kvadrat's Fiord 2 has been awarded the EU Ecolabel

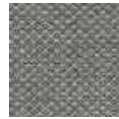
Arper grade F



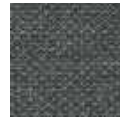
FD00101



FD00121



FD00151



FD00171



FD00191



FD00201



FD00251



FD00262



FD00271



FD00322



FD00351



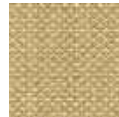
FD00371



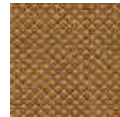
FD00382



FD00391



FD00422



FD00442



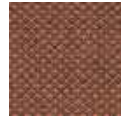
FD00451



FD00521



FD00551



FD00562



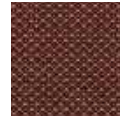
FD00571



FD00581



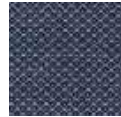
FD00591



FD00642



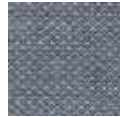
FD00662



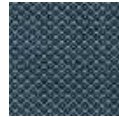
FD00672



FD00721



FD00751



FD00762



FD00771



FD00782



FD00791



FD00821



FD00862



FD00951



FD00961



FD00971



FD00981



FD00991

arper

# kvadrat

Hallingdal 65 (EU Ecolabel)

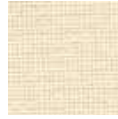


Kvadrat's Hallingdal 65 has been awarded the EU Ecolabel

Arper grade  
G



HA00103



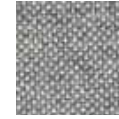
HA00100



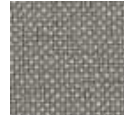
HA00110



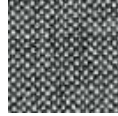
HA00113



HA00116



HA00123



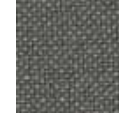
HA00126



HA00130



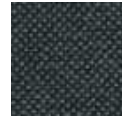
HA00143



HA00153



HA00166



HA00173



HA00180



HA00190



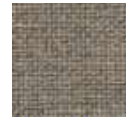
HA00200



HA00220



HA00224



HA00227



HA00270



HA00350



HA00368



HA00370



HA00376



HA00390



HA00407



HA00420



HA00457



HA00526



HA00547



HA00563



HA00573



HA00590



HA00596



HA00600



HA00657



HA00660



HA00674



HA00680



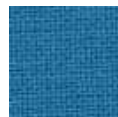
HA00687



HA00694



HA00702



HA00723



HA00733



HA00750



HA00753



HA00754



HA00763



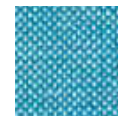
HA00764



HA00773



HA00810



HA00840



HA00850



HA00890



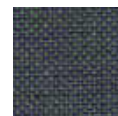
HA00907



HA00944



HA00960



HA00968



HA00980

Not available for Paravan collection

arper

# kvadrat

Jaali

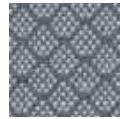


Kvadrat's Jaali has been awarded the EU Ecolabel

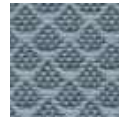
Arper grade  
G



JA00101



JA00121



JA00141



JA00171



JA00201



JA00341



JA00561



JA00571



JA00591



JA00611



JA00651



JA00671



JA00751



JA00761



JA00781



JA00791



JA00871



JA00951



JA00961



JA00991

# kvadrat

Moss

Arper grade  
H



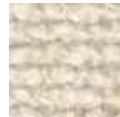
M800001



M800002



M800003



M800004



M800005



M800006



M800007



M800008



M800009



M800010



M800011



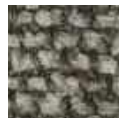
M800012



M800013



M800014



M800015



M800016



M800017



M800018



M800019



M800020



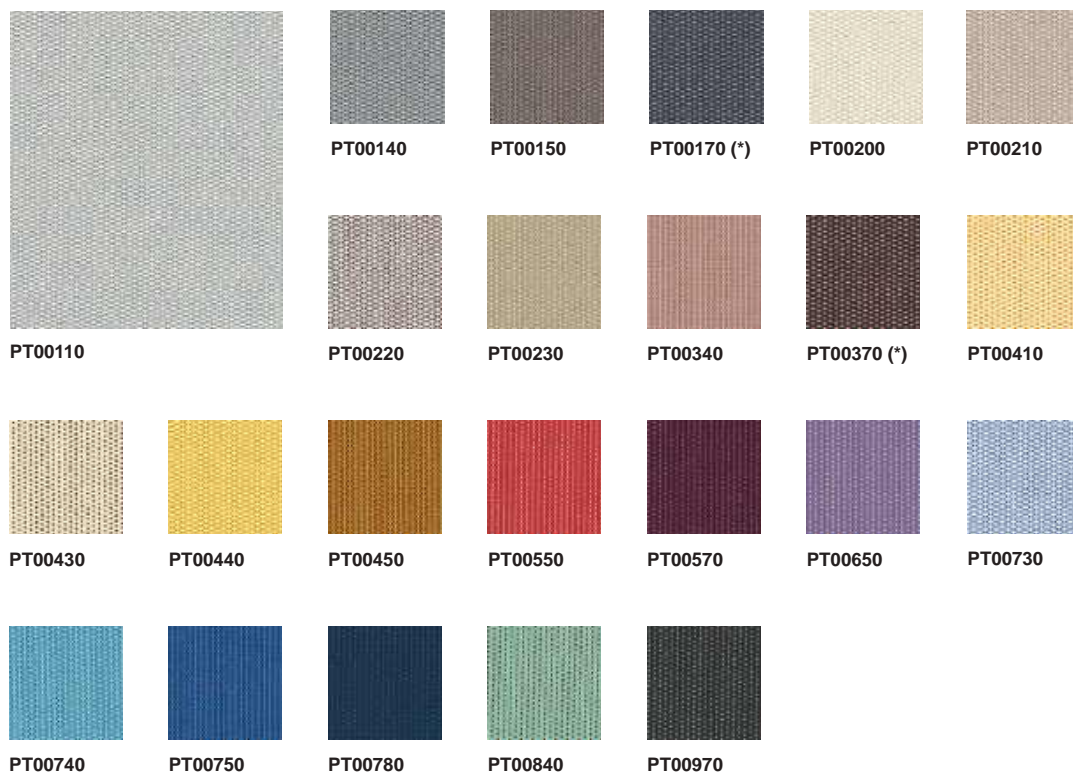
M800021



M800022

**kvadrat**  
Patio Outdoor

Arper grade  
E



(\*) Not available for Pix Outdoor collections.

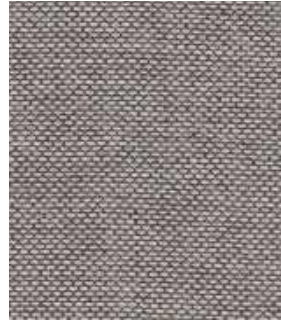
**kvadrat**

Re-wool 2



Kvadrat's Re-wool  
has been awarded  
the EU Ecolabel

Arper grade  
E



RW00108



RW00128



RW00147



RW00158



RW00198



RW00218



RW00347



RW00377



RW00397



RW00447



RW00558



RW00568



RW00577



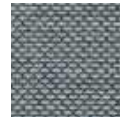
RW00648



RW00657



RW00687



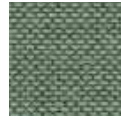
RW00718



RW00787



RW00797



RW00858



RW00868



RW00967



RW00977



RW00987

# kvadrat

Remix 3 (EU Ecolabel)



Kvadrat's Remix 3  
has been awarded  
the EU Ecolabel

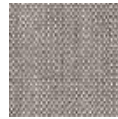
Arper grade  
C



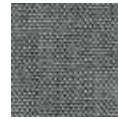
RX00123



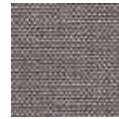
RX00113 (\*)



RX00126



RX00133



RX00136



RX00143



RX00152



RX00163



RX00173



RX00183



RX00196



RX00223 (\*)



RX00233



RX00242



RX00252



RX00266



RX00276



RX00286



RX00296



RX00326



RX00346



RX00356



RX00362



RX00373



RX00383



RX00393



RX00406



RX00412



RX00422



RX00433



RX00443



RX00452



RX00516



RX00536



RX00543



RX00566



RX00606



RX00612



RX00632



RX00643



RX00653



RX00662



RX00672



RX00682



RX00686



RX00692



RX00716



RX00722



RX00733



RX00743



RX00753



RX00762



RX00773



# kvadrat

Remix 3 (EU Ecolabel)



Kvadrat's Remix 3 has been awarded the EU Ecolabel

Arper grade C



(\*) RX00113 - RX00223: only for the cushions Owl, Lines e Pleats.

# kvadrat

Revive 1

Arper grade B



# kvadrat

Ria

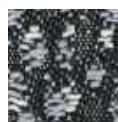
Arper grade  
ES



RA00111



RA00141



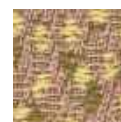
RA00181



RA00241



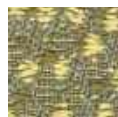
RA00281



RA00431



RA00441



RA00451



RA00541



RA00551



RA00591



RA00741



RA00791



RA00921



RA00981

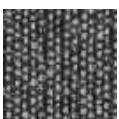
# kvadrat

Savanna

Arper grade  
G



SA00122



SA00152



SA00192



SA00202



SA00222



SA00242



SA00262



SA00292



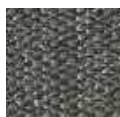
SA00442



SA00622



SA00672



SA00952



# kvadrat

Sonar 3

Arper grade  
M



S700113



S700124



S700134



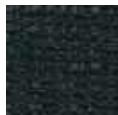
S700153



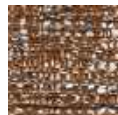
S700164



S700173



S700194



S700374



S700384



S700633



S700673



S700684



S700734



S700773



S700784



S700934



S700974

**kvadrat**

Steelcut 3



Kvadrat's Steelcut 3  
has been awarded the  
EU Ecolabel

Arper grade  
**G**



SE00545



SE00110



SE00120



SE00140



SE00155



SE00160



SE00180



SE00190



SE00220



SE00240



SE00252



SE00265



SE00365



SE00402



SE00445



SE00452



SE00502



SE00512



SE00522



SE00535



SE00552



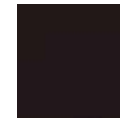
SE00562



SE00605



SE00612



SE00655



SE00662



SE00672



SE00682



SE00695



SE00732



SE00742



SE00775



SE00780



SE00912



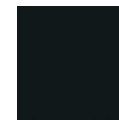
SE00922



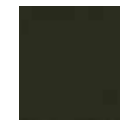
SE00932



SE00962



SE00975



SE00985

**arper**

**kvadrat**  
Steelcut Trio 3

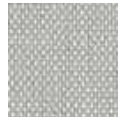


Kvadrat's Steelcut Trio 3 has been awarded the EU Ecolabel

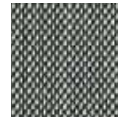
Arper grade  
G



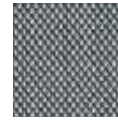
ST00113



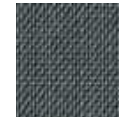
ST00105



ST00124



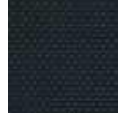
ST00133



ST00153



ST00176



ST00195



ST00205



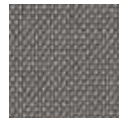
ST00213



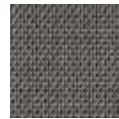
ST00226



ST00236



ST00246



ST00253



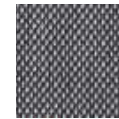
ST00266



ST00276



ST00283



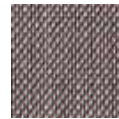
ST00336



ST00376



ST00383



ST00416



ST00426



ST00436



ST00446



ST00453



ST00466



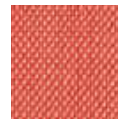
ST00476



ST00506



ST00515



ST00526



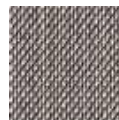
ST00533



ST00553



ST00576



ST00616



ST00636



ST00645



ST00666



ST00686



ST00713



ST00716



ST00746



ST00756



ST00776



ST00796



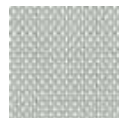
ST00806



ST00865



ST00883



ST00906



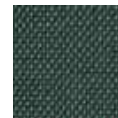
ST00916



ST00946



ST00953



ST00966



ST00976



ST00983



ST00996

# kvadrat

Tonus 4



Kvadrat's Tonus 4 has been awarded the EU Ecolabel

Arper grade F



T300100



T300118



T300125



T300128



T300129



T300130



T300131



T300132



T300135



T300207



T300210



T300216



T300224



T300240



T300244



T300364



T300374



T300394



T300424



T300440



T300454



T300464



T300474



T300508



T300554



T300605



T300608



T300609



T300610



T300613



T300615



T300619



T300631



T300634



T300636



T300654



T300664



T300684



T300690



T300754



T300764



T300854



T300914



T300934



T300954



T300964



T300974

**kvadrat**

Vidar 4



Kvadrat's Vidar 4 has been awarded the EU Ecolabel

Arper grade  
J



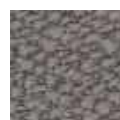
VD00106



VD00123



VD00133



VD00143



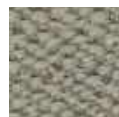
VD00146



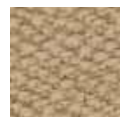
VD00152



VD00182



VD00222



VD00323



VD00333



VD00353



VD00363



VD00386



VD00443



VD00456



VD00472



VD00526



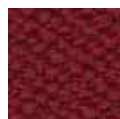
VD00542



VD00554



VD00556



VD00582



VD00622



VD00633



VD00653



VD00656



VD00676



VD00693



VD00723



VD00733



VD00743



VD00772



VD00786



VD00872



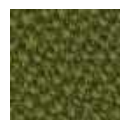
VD00913



VD00932



VD00943



VD00956



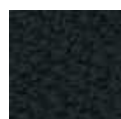
VD00972



VD01062



VD01511



VD01880

**arper**



Jet

Arper grade  
A





Jet



JE09606



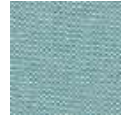
JE09607



JE09608



JE09609



JE09610

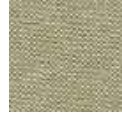


JE09701



JE09702

Arper grade  
A



JE09703



JE09704



JE09803



JE09804



JE09805



JE09806

**camira**  
Main Line Flax

Arper grade  
C



MFMLF01



MFMLF02



MFMLF03



MFMLF05



MFMLF06



MFMLF07



MFMLF08



MFMLF09



MFMLF10



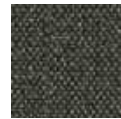
MFMLF12



MFMLF13



MFMLF15



MFMLF16



MFMLF17



MFMLF18



MFMLF19



MFMLF20



MFMLF21



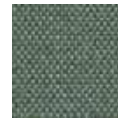
MFMLF22



MFMLF23



MFMLF24



MFMLF25



MFMLF26



MFMLF28



MFMLF29



MFMLF31



MFMLF32



MFMLF34



MFMLF36



MFMLF43



MFMLF44



MFMLF45



MFMLF47



MFMLF49



MFMLF50



MFMLF51



MFMLF52



MFMLF53



MFMLF54



MFMLF55



MFMLF56



MFMLF57



MFMLF59



MFMLF60



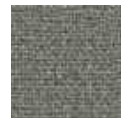
MFMLF61



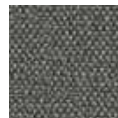
MFMLF62



MFMLF63



MFMLF64



MFMLF65



MFMLF66



MFMLF67



**camira**  
Synergy

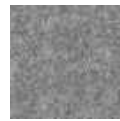
Arper grade  
C



SNLDS07



SNLDS08



SNLDS16



SNLDS17



SNLDS18



SNLDS19



SNLDS20



SNLDS21



SNLDS22



SNLDS23



SNLDS24



SNLDS25



SNLDS26



SNLDS27



SNLDS28



SNLDS29



SNLDS31



SNLDS32



SNLDS33



SNLDS34



SNLDS35



SNLDS36



SNLDS37



SNLDS38



SNLDS39



SNLDS40



SNLDS41



SNLDS43



SNLDS44



SNLDS45



SNLDS47



SNLDS48



SNLDS49



SNLDS50



SNLDS51



SNLDS52



SNLDS53



SNLDS54



SNLDS55



SNLDS56



SNLDS57



SNLDS58



SNLDS59



SNLDS60



SNLDS61



SNLDS62



SNLDS63



SNLDS64



SNLDS66



SNLDS67



SNLDS68



SNLDS69



SNLDS70



**camira**  
Synergy

Arper grade  
C



SNLDS71



SNLDS72



SNLDS73



SNLDS76



SNLDS77



SNLDS78



SNLDS79



SNLDS80



SNLDS81



SNLDS82



SNLDS84



SNLDS85



SNLDS87



SNLDS88

# camira

Xtreme

Arper grade  
B



XPYS004



XPYS005



XPYS009



XPYS024



XPYS026



XPYS030



XPYS035



XPYS045



XPYS046



XPYS047



XPYS071



XPYS072



XPYS073



XPYS074



XPYS076



XPYS077



XPYS079



XPYS081



XPYS082



XPYS084



XPYS091



XPYS094



XPYS095



XPYS096



XPYS097



XPYS100



XPYS101



XPYS102



XPYS105



XPYS108



XPYS136



XPYS141



XPYS145



XPYS156



XPYS159



XPYS160



XPYS165



XPYS168



XPYS171



XPYS172



XPYS173

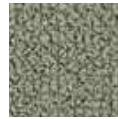
# Gabriel<sup>®</sup>

Grain

Arper grade  
C



GI60300



GI60301



GI60302



GI60303



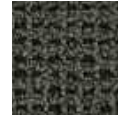
GI60320



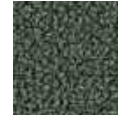
GI60321



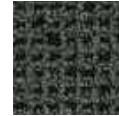
GI60322



GI60323



GI60324



GI60325



GI60328



GI60999



GI61037



GI61146



GI61229



GI61230



GI61247



GI61248



GI61249



GI61250



GI61251



GI61252



GI61253



GI61254



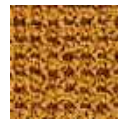
GI61255



GI61256



GI62016



GI62121



GI62122



GI62123



GI63117



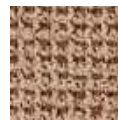
GI63118



GI64041



GI64249



GI64250



GI64251



GI66216



GI66231



GI66232



GI66233



GI66234



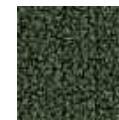
GI66235



GI66236



GI66237



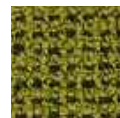
GI68155



GI68243



GI68257



GI68258



GI68259



GI68260

# Gabriel<sup>®</sup>

Step

Arper grade  
B



S160004



S160011



S160021



S160090



S160091



S160092



S160745



S160746



S160999



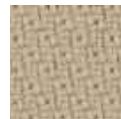
S161103



S161149



S161787



S161788



S161789



S161791



S161793



S162057



S162073



S162744



S162746



S163012



S163075



S163082



S163736



S163738



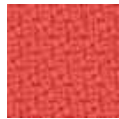
S163739



S164013



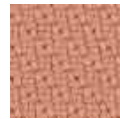
S164159



S164178



S164179



S164767



S164770



S165011



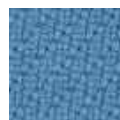
S165018



S165023



S165047



S166018



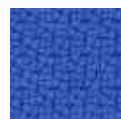
S166019



S166148



S166149



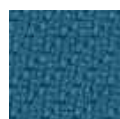
S166150



S166151



S166152



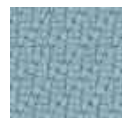
S166763



S166764



S166765



S167004



S167007



S167072



S167073



S167735



S168118



S168119

**Gabriel**  
Step

Arper grade  
B



S168120



S168121



S168158



S168159



S168161



S168162



S168163



S168165



S168700



S168701



S168798

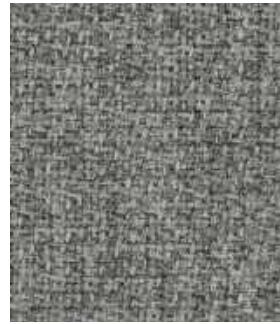


S168799

# Gabriel<sup>®</sup>

Step Melange

Arper grade  
B



SM60004



SM60011



SM60021



SM60090



SM60092



SM60345



SM60345



SM61103



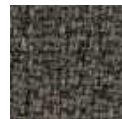
SM61104



SM61149



SM61151



SM61152



SM61286



SM61287



SM61288



SM61289



SM61291



SM61293



SM62057



SM62073



SM62143



SM62144



SM62146



SM63075



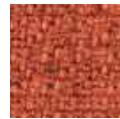
SM63082



SM63136



SM63137



SM63138



SM63139



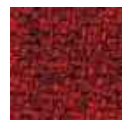
SM64013



SM64159



SM64178



SM64179



SM64267



SM64270



SM65011



SM65018



SM65023



SM65047



SM66018



SM66019



SM66148



SM66150



SM66151



SM66152



SM66263



SM66264



SM66265



SM67004



SM67007



SM67072



SM67135



SM68118

**Gabriel**  
Step Melange

Arper grade  
B



SM68119



SM68120



SM68120



SM68158



SM68159



SM68161



SM68162



SM68163



SM68165



SM68298



SM68299



SM68300



SM68301





C200001



C200002



C200006



C200007



C200017



C200043



C200256



C200259



C200270



C200271



C200272



C200273



C200274



C200275



C200276



C200277



C201000



LK00003



LK00040



LK00041



LK00043



LK00044



LK00047



LK00048



LK00049



LK00205



LK00206



LK00207



LK00211



LK00212



LK00213



LK00215



LK00216



LK00218

# maharam

Messenger 5

Arper grade  
D



MS00001



MS00007



MS00008



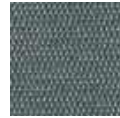
MS00024



MS00025



MS00029



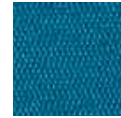
MS00031



MS00038



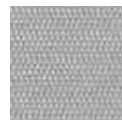
MS00040



MS00041



MS00045



MS00046



MS00048



MS00050



MS00051



MS00053



MS00054



MS00058



MS00060



MS00061



MS00062



MS00063



MS00066



MS00067



MS00069



MS00070



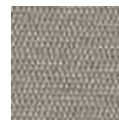
MS00071



MS00072



MS00076



MS00077



MS00078



MS00079



MS00080



MS00081



MS00082



MS00083



MS00084



MS00085



MS00086



MS00087



MS00088



MS00089



MS00090



MS00091



MS00092



MS00093



MS00094



MS00095



MS00096



MS00097

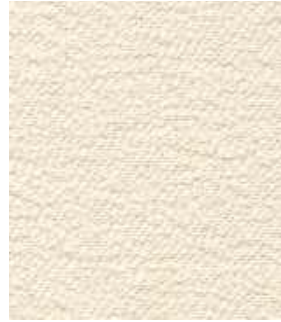


MS00098



Sera

Arper grade  
G



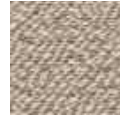
S800001



S800002



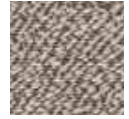
S800003



S800004



S800005



S800006



S800007



S800008



S800009



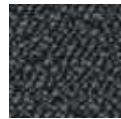
S800010



S800011



S800012



S800013



S800014



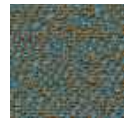
S800015



S800016



S800017



S800018



S800019



S800020



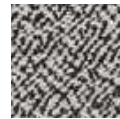
S800021



S800022



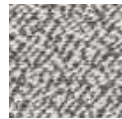
S800023



S800027



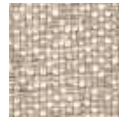
S800028



S800029



FB00001



FB00002



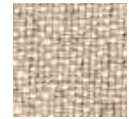
FB00003



FB00004



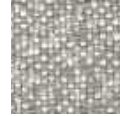
FB00005



FB00006



FB00007



FB00008



FB00009



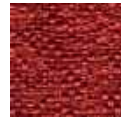
FB00010



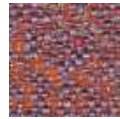
FB00011



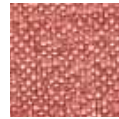
FB00012



FB00013



FB00014



FB00015



FB00016



FB00017



FB00018



FB00019



FB00020



FB00021



FB00022



FB00023



FB00024



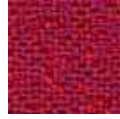
FB00025



FB00026



FB00027



FB00028



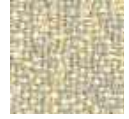
FB00029



FB00030



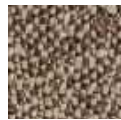
FB00031



FB00032



FB00033



FB00034



FB00035



FB00036



FB00037



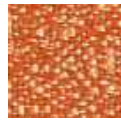
FB00038



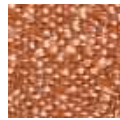
FB00039



FB00040



FB00041



FB00042



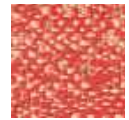
FB00043



FB00044



FB00045



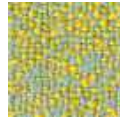
FB00046



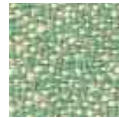
FB00047



FB00048



FB00049



FB00050



FB00051



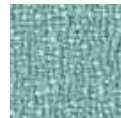
FB00052



FB00053



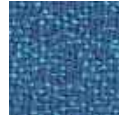
FB00054



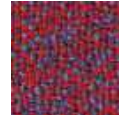
FB00055



FB00056



FB00057



FB00058



FB00059



FB00060

**sunbrella®**  
Heritage

Arper grade  
C



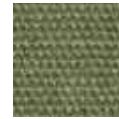
HE00001



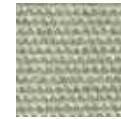
HE00006



HE00009



HE00011



HE00012



HE00015



HE00016



HE00017



HE00018



HE00019



HE00021



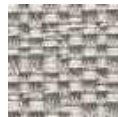
HE00024

**sunbrella®**  
Savane

Arper grade  
C



SV00233



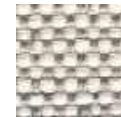
SV00234



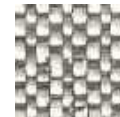
SV00235



SV00236



SV00349



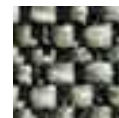
SV00350



SV00351



SV00446



SV00447



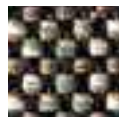
SV00448



SV00449



SV00450



SV00451

**arper**



Istituito nel 1992, il marchio comunitario di qualità ecologica o Ecolabel, il cui logo è rappresentato da un fiore, è uno speciale sistema di certificazione creato per aiutare i consumatori europei a scegliere prodotti e servizi più ecologici e più rispettosi dell'ambiente.

Established in 1992, the EU Eco-label "Flower" is a unique certification scheme aimed to help European consumers distinguish greener, more environmentally friendly, products and services.

Hinter der "Blume", dem 1992 ins Leben gerufenen EU-Umweltzeichen, steckt ein einzigartiges Zertifizierungssystem, das dem europäischen Verbraucher das Erkennen umweltfreundlicherer Produkte und Dienstleistungen erleichtern soll.

Établi en 1992, le label écologique de l'EU symbolisé par la "Fleur" est un système d'homologation unique destiné à aider les consommateurs européens à discerner les produits et services plus verts et plus favorables à l'environnement.

Creada en 1992, la etiqueta ecológica de la UE, también conocida como "la flor", constituye un sistema de certificación único, cuyo objetivo es ayudar a los consumidores europeos a identificar los productos y servicios más ecológicos y respetuosos del medio ambiente.

**Fabrics:**

It is important that fabrics are cleaned regularly in order to keep them looking their best and extend their life. Powder and dirt can cause wear and tear on fabrics and as such we advise that you clean them using a low-pressure vacuum cleaner, preferably once a week.

Non-greasy stains can be removed by delicately dabbing them with a clean cloth that won't leave any lint or a sponge that has been soaked in clean, warm water then thoroughly squeezed out. If necessary, you can then soak with soapy water or water with liquid washing up detergent added (see formulas). Once this is done, soak the surface with clean, tepid water.

For greasy stains, use a dry stain remover. Ensure that you comply with the manufacturer's instructions as closely as possible. If you have any doubts, test the cleaning product on a discreet area in order to check its effect. Wait for at least 24 hours to see if any problems arise.

Formulas: The soapy solution consists of ¼ deciliter soap flakes per liter of hot water, which must then be cooled before use. The solution with dishwashing liquid is made up of max 1 teaspoon of detergent per every liter of water. If you use concentrated products, pour only a few drops into each liter of product.

**Coated fabrics:**

Regularly dust using a microfibre cloth. In the event of stains, clean using a cloth that has been dampened using tepid water or water with some neutral soap in it. Do not use abrasive products, ethyl alcohol and solvent-based detergents. If you have any doubts, test the cleaning product on a discreet area in order to check its effect. Wait for at least 24 hours to see if any problems arise.

**Structural mesh in knitted fabric:**

Made to Arper's technical specifications with post-consumption recycled polyester yarns, the knitted fabric mesh is soft and comfortable. The particular structure makes it self-draining and breathable, this ensures rapid passage of the water and makes it quick drying. It has excellent resistance to weathering, humidity and temperature changes, also thanks to the addition of anti-UV stabilisers that prevent and slow down natural ageing without the addition of substances dangerous to the environment or to health. Maintenance: It is important to regularly clean the fabric in order to maintain its appearance in the best conditions and to extend its life. Dust and dirt wear out the fabric, so it is recommended to clean it with low suction vacuum cleaners, preferably once a week. Non-grease stains are eliminated by gently dabbing them with a clean cloth that leaves no residue or a sponge immersed in clean hot water and then well squeezed. If necessary, wash by dipping the cloth used for cleaning in soapy water or water with the addition of liquid dishwashing detergent (see formulas). Then dab

the surface with clean warm water, letting it dry completely.

For grease stains, it is possible to use dry stain removers, scrupulously following the manufacturer's instructions.

Do not use hot steam, do not dry with electrical appliances with temperatures above 50°C. Do not use abrasive substances or chemical solvents.

In case of doubt, test the cleaning product on a part hidden from view to verify the result, waiting at least 24 hours for any problems to arise.

Formulas: The soapy solution consists of 1/4 dl of soap flakes for each litre of hot water, which then needs to be cooled before use. The solution with liquid dishwashing detergent consists of up to 1 teaspoon of detergent per litre of water. If you use concentrated products, pour only a few drops into each litre of product.

**Leather, hard leather:**

Take care not to place products in direct sunlight as this can alter the colour of these materials. Avoid exposing the materials to heat sources.

Regularly dust using a soft, dry cloth. Any stains need to be removed as quickly as possible to prevent them from soaking in deeply. Use absorbent paper or a cloth to absorb them straight away. For cleaning, use specific, high-quality leather cleaning products and comply with the manufacturer's instructions as closely as possible.

If you have any doubts, test the cleaning product on a discreet area in order to check its effect. Wait for at least 24 hours to see if any problems arise. Alternatively, use a cloth that has been dampened with some water and well-diluted neutral soap. Do not rub. Instead, delicately dab the stain working from the edge into the centre, then dry immediately after treatment.

**Wood:**

Dust and common domestic stains can be removed using a solution made from water and well-diluted neutral soap. Under no circumstances should you use commercial stain removers for cleaning. In order to avoid scratching the products, use a soft cloth and clean using circular movements. Do not use solvents or abrasive products. Always dry surfaces using a dry cloth. If you have any doubts, test the cleaning product on a discreet area in order to check its effect. Wait for at least 24 hours to see if any problems arise.

**Wood for outdoor use:**

Wood is a natural material suitable for outdoor use. For a sustainable approach, Arper selects only essences from Europe within an FSC certified chain of custody. The use of water-based paints, safe for health and the environment, guarantees a high level of protection and durability for outdoor use, with a reduced



environmental impact.

**Maintenance:** Dust and the most common stains can be removed using a well-diluted solution of water and neutral soap. It is absolutely necessary not to use commercial stain removers for cleaning. To avoid scratching, use a soft cloth and clean with gentle, circular movements (especially the opaque finishes, if subjected to action that is too aggressive, may develop shiny halos in spots). Do not use waxes for furniture or floors, solvents or abrasive products. Always dry the surfaces with a dry cloth. Do not use the pressure washer or high-pressure water, which may damage the surface of the wood. In case of doubt, test the cleaning solution on a part hidden from view to verify the result, waiting at least 24 hours for any problems to arise. Immediately remove any liquids spilled on the surface of the wood, avoid the accumulation of water or other liquids that could damage the product.

Wood can have impurities and imperfections, which fall within accepted quality standards, and should be considered as distinctive features that attest to its natural beauty. Periodic and correct maintenance extends the life of the product.

#### **Plastic Materials:**

Regularly plastic surfaces dust using a microfibre cloth. Dust and common domestic stains can be removed using a cloth or sponge that has been dampened in tepid water or water with some well-diluted neutral detergent in it.

Do not use commercial stain removers or aggressive products for cleaning. In order to avoid scratching the products, use a soft cloth and clean using circular movements. Under no circumstances should you use solvent-based detergents or abrasive products. If you have any doubts, test the cleaning product on a discreet area in order to check its effect. Wait for at least 24 hours to see if any problems arise.

#### **Chrome-plated, anodised or painted metal surfaces:**

Clean using specific products such as regular detergents for domestic surfaces diluted in tepid water, provided they are not abrasive and do not contain acid or bleach. Avoid using sponges and scourers made from synthetic fibre or metal as these could permanently mark surfaces. After cleaning, rinse products carefully to prevent traces of detergent from reacting with the surface finish to avoid dulling or oxidisation. After cleaning, dry with a shammy cloth. The use of polish on chrome-plated or painted surfaces is not recommended. These products should always be used with caution and only be experts as their abrasive qualities could irreparably damage surfaces. If you have any doubts, test the cleaning product on a discreet area in order to check its effect. Wait for at least 24 hours to see if any problems arise.

#### **Stainless steel:**

Clean on a regular basis (every 15-20 days) using a soft damp cloth or common products specific for stainless steel.

#### **Table Tops:**

Clean and remove any substance that accidentally comes into contact with the surface as quickly as possible using a damp cloth or microfibre cloth and some neutral detergent diluted in tepid water. Always dry after cleaning. Aggressive detergents containing bleach or abrasive detergents (such as bathroom cream cleaner) must never be used. Take care not to rub too hard in order to avoid scratching the surface. Avoid using sponges or scourers made from synthetic fibres or metal.

If you have any doubts, test the cleaning product on a discreet area in order to check its effect. Wait for at least 24 hours to see if any problems arise.

#### **Glass surfaces**

The tempered glass used by Arper ensures high levels of safety. In the event of a breakage, the glass smashes into tiny, rounded fragments which will not cause a cut. In any case, you should avoid hitting the glass with hard or sharp objects and the glass should not be exposed to extreme shifts in temperature (i.e. do not place very hot or cold items on it). Regularly dust glass using a microfibre cloth. Clean using specific products or neutral soap applied using a soft, clean cloth. Do not use powered detergents or abrasive detergents that could scratch the glass, causing irrevocable damage to the surface. If you have any doubts, test the cleaning product on a discreet area in order to check its effect. Wait for at least 24 hours to see if any problems arise.

#### **Marble and Venetian Terrazzo surfaces:**

Clean and remove any substance that accidentally comes into contact with the surface as quickly as possible using a damp cloth or microfibre cloth and some tepid water or a specialist detergent. Always dry immediately after cleaning. Take care not to rub too hard in order to avoid scratching the marble. If you have any doubts, test the cleaning product on a discreet area in order to check its effect. Wait for at least 24 hours to see if any problems arise.

Marble is a calcareous, porous material that is susceptible to reactions with acidic substances. Marble can absorb fatty or oily substances and colourants. These can soak into the material and stain the surface. During use, you are advised against using objects that can scratch or cause abrasions to the surface, such as acidic products (Coca Cola, vinegar, acidic detergents) and colourants (wine, coffee, fruit, sugary liquid, tomato sauce, very hard water etc.).

# Care instructions

## **Indications for use & maintenance of “outdoor” products:**

Arper guarantees, through laboratory tests, the strength and durability of its products. It should be noted, however, that any material exposed to atmospheric agents and the elements, even if treated specifically for outdoor use, will undergo a gradual deterioration over time, the extent of which is closely related to the geographical position, the evolution of climatic phenomena, the more or less marked presence of humidity, salinity (poolside, marine environments).

Use and maintenance are conditions that determine the actual yield and maintenance in good condition of the product over time. It is therefore recommended to avoid critical external conditions such as prolonged and direct exposure to sunlight, pouring rain and aggressive environments such as proximity to the seaside or where the sea breeze can bring high levels of moisture with marine salinity or abrasive sands. Do not place wooden products on lawns or uneven surfaces, where any stagnation of water may damage the parts in contact. In any case, never let water or other liquids stagnate on the product. In the vicinity of plants or trees, remove any leaves, flowers or organic substances that could rest on the surfaces of the product, to prevent that their deterioration stains the paints or fabrics. In case of exposure to rain, as soon as possible, remove the pillows (if any) from the chair and let them dry separately to facilitate drying and drainage of the water.

Periodic cleaning is recommended, following the recommended indications for the different materials. For short periods when the product is not in use, it is recommended to cover it with the protective cover. In case of prolonged non-use or during the winter period, it is recommended to clean the product, allow it to dry well, and store it in a well-aerated indoor place, protected from the elements. The pillows (if any) must be removed from the chair, cleaned and left to dry well, and finally, stored in a well-aerated indoor place, protected from the elements.

## **Papershell:**

Dust and common stains can be removed using a solution of water and well-diluted neutral soap. Clean and remove any substance or liquid that accidentally falls on the surface as soon as possible, as it could damage the product. The use of commercial stain removers, aggressive cleaners or those containing bleach, furniture or floor waxes, solvents, or abrasive products must be strictly avoided. Use a soft cloth and clean with gentle circular movements (especially for matte finishes, which may develop shiny streaks if subjected to overly aggressive action); avoid synthetic fiber or metal sponges and pads, as they could irreparably scratch the surfaces. Always dry the surfaces with a dry cloth. In case of doubt, test the cleaning solution on a hidden part of the product to check the result, waiting at least 24 hours for any potential issues to arise. Over time, the material will undergo a color shift, particularly if exposed to sunlight; this should be considered a distinctive feature that highlights its natural beauty. Regular and proper maintenance will slow down this process and prolong the product's lifespan.

I colori visualizzati sono puramente indicativi e possono variare rispetto alla realtà. Rivolgersi ad Arper o al proprio rivenditore di fiducia per ricevere un campione colore o per maggiori informazioni.

Arper SPA si riserva di apportare modifiche e/o migliorie di carattere tecnico ed estetico ai propri modelli e prodotti in qualsiasi momento e senza preavviso.

Per maggiori informazioni visitate il sito [arper.com](http://arper.com)

Colours shown are used for reference only and may look different in reality. Please contact Arper or your retailer to receive a colour sample or more information.

Arper SPA reserves the right to make modifications and improvements of a technical or aesthetic nature to the products at any time without notice.

For further information, please visit [arper.com](http://arper.com)

Bei den angezeigten Farben handelt es sich um reine Farbbeispiele, die von der Realität abweichen können.

Für Farbmuster und nähere Informationen wenden Sie sich bitte an Arper oder an den Händler Ihres Vertrauens.

Arper SPA behält sich das Recht vor, jederzeit und ohne Vorankündigung Veränderungen und Verbesserungen technischen und ästhetischen Charakters an seinen Produkten vorzunehmen.

Für weitere Informationen besuchen Sie bitte unsere Webseite [arper.com](http://arper.com)

La reproduction photographique des couleurs n'est que purement indicative et peut être différente de la réalité. S'adresser à Arper ou à votre revendeur de confiance pour recevoir un échantillon de couleur ou pour de plus amples informations.

Arper SPA se réserve le droit d'apporter des modifications et/ou des améliorations d'ordre technique et esthétique à ses produits, et ceci à tout moment et sans préavis.

Pour plus d'informations, rendez-vous sur le site [arper.com](http://arper.com)

Los colores visualizados son meramente indicativos y pueden diferir de la realidad. Para recibir una muestra del color o para más información, contactar a Arper o a su distribuidor de zona. Arper SPA se reserva el derecho de realizar cambios y/o mejoras técnicas y estéticas en sus productos en cualquier momento y sin previo aviso.

Para más información, visite [arper.com](http://arper.com)"

## Italy

Monastier (TV) — Headquarters  
and showroom  
Arper SPA  
Via Lombardia 16  
31050 Monastier di Treviso (TV)  
T +39 0422 7918  
info@arper.com  
www.arper.com

Commerciale Italia  
T +39 0422 791905  
commerciale@arper.com

Export Office  
sales@arper.com

Milan — Showroom  
Via Pantano 30  
20122 Milan  
T +39 02 89093865  
milano@arper.com

## **EUROPE**

### UK

London — Subsidiary and showroom  
Arper UK LTD  
11 Clerkenwell Road  
London EC1M 5PA  
T +44 (0) 20 7253 0009  
london@arper.com

### Germany

Cologne — Showroom  
Design Post Köln  
Deutz-Mülheimer-Str. 22a  
50679 Köln  
T +49 221 690 650  
info@designpost.de

Fruchtof München — Meeting Hub  
2. Innenhof, 2. Etage  
Gotzinger Straße 52b  
D-81371 München  
T +49 171 1080976  
muenchen@arper.com

### Norway

Oslo — Showroom  
Drammensveien 130  
0277 Oslo  
T +47 908 202226  
norway@arper.com

### Sweden

Stockholm — Branch  
T +46 705 101216  
sweden@arper.com

## The Netherlands

Amsterdam — Showroom  
Design Post  
Cruquiusweg 111-L  
1019 AG Amsterdam  
T +31 (0)20 705 1555  
holland@arper.com

## **AMERICA**

### USA

New York — Subsidiary and showroom  
Arper USA Inc.  
476 Broadway, Suite 2F  
NY 10013 New York  
T +1 (212) 647 8900  
infousa@arper.com

Chicago — Showroom  
The Merchandise Mart  
Space#346 - 3rd Floor  
Chicago  
T +1 (336) 434 2366  
infousa@arper.com

High Point, North Carolina — Production  
and logistics site  
660 Southwest St  
High Point, NC 27260  
T +1 (336) 434 2370  
infousa@arper.com

Los Angeles — Showroom  
550 South Hope St., Suite 275  
90071 Los Angeles  
T +1 (336) 434 2382  
infousa@arper.com

### Mexico

Mexico City — Subsidiary and showroom  
Culiacan 123, Piso 9  
Col. Hipodromo Condesa  
Delegation Cuauhtémoc  
06170 – Ciudad de México  
Mexico  
T +52 1 62714417  
infolatam@arper.com

## **ASIA**

### Japan

Arper Japan K.K. — Subsidiary  
and showroom  
HT Jingu Gaien Bldg.8F  
Minato-ku Kita-Aoyama 2-7-22  
Tokyo 107-0061  
T +81 3 5775 0008  
carejpn@arper.com

### Singapore

Singapore — Branch  
c/o 3 Lim Teck Kim Road, #01-01  
Genting Centre  
088934 Singapore  
singapore@arper.com

### UAE

Arper Middle East and India  
— Subsidiary  
and showroom  
U-Bora Towers - Unit 1901  
Business Bay  
Dubai  
T +971 529255633  
infome@arper.com