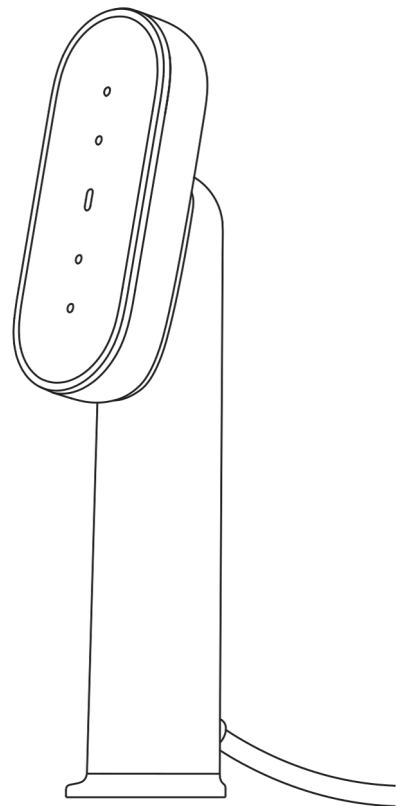


**Cirrus Lite Travel Steamer
Manual**

S T E A M E R Y

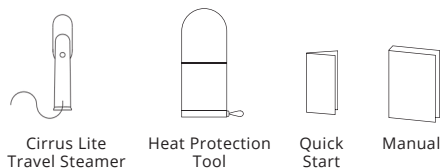
STEAMERY



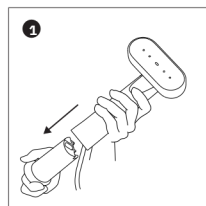
**Cirrus Lite Travel Steamer
Quick Start**

steamerystockholm.com

Box content



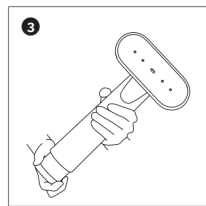
Preparing the steamer



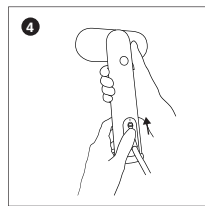
Remove the water tank.



Fill with water.



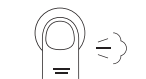
Reinsert the tank.



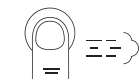
Switch on the power button. Wait for the white light (18s).

Steam modes

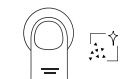
- 1 Press & hold 2 Press 2 times 3 Press 5 times



On demand steam

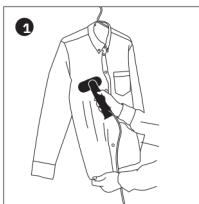


Continuous steam



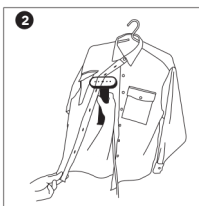
Descaling mode

Using the steamer



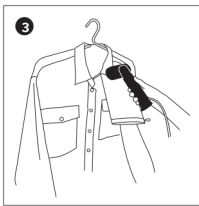
Steaming from the outside

Hold the garment at the bottom. Lightly press the steamer against the fabric and move it slowly to smooth out wrinkles.



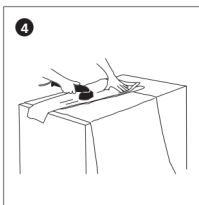
Steaming from the inside

Place the steamer inside the garment. Glide it gently along the inner surface of the fabric.



Use the Heat Protection Tool

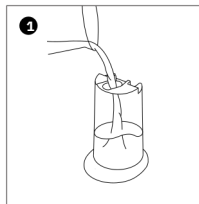
For precise areas like collars, cuffs, and pockets, press the fabric against the Heat Protection Tool and gently steam for a smooth, even finish.



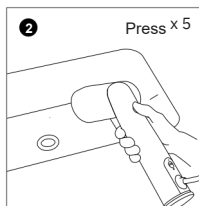
Use as an iron

The steamer can also be used like an iron. Use a towel as a base and press for a pressed effect.

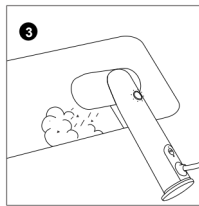
Descaling the steamer



Fill up the water tank. Fill the water tank with water and reattach it to the appliance. Do not use any liquid other than water.



Start descaling mode. Hold the steamer over a sink, turn it on, then press the steam button five times within 5 seconds.



Descaling in progress. During descaling, the LED light flashes red. Steam, hot water, and limescale may be released. The light turns white when the process is complete. Duration: approximately 90 seconds.



Clean and complete. Wipe the front plate with a cloth. Your steamer is now ready to use.