

# 1 INCH FABRIC SELECTION



# CURATED SELECTION by EMECO

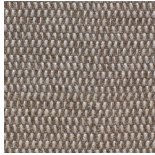
Fabric required: 1 yd / 1m fabric, 18 sq. ft / 5.5 sq. m leather. Full color range of each fabric collection also available, as well as COM/COL. For pricing, please refer to [US Trade Price List](#). Other markets, please [contact](#) your local sales representative.

## MAHARAM MESSENGER

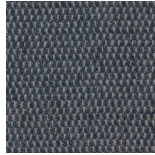
78% Post industrial recycled, 15% Polyester, 7% Nylon



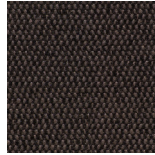
079 - Oyster



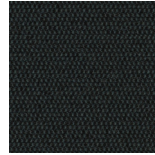
077 - Ash



031 - Cloud



076 - Fossil



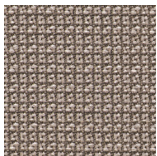
087 - Everglade



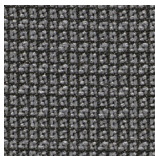
029 - Onyx

## MAHARAM METRIC

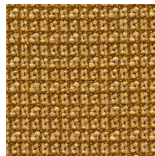
51% Post-Industrial Recycled Polyester, 49% Polyester



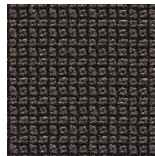
002 - Fog



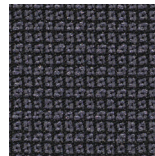
001 - Phantom



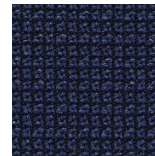
019 - Tupelo



007 - Mineral



024 - Anchor



026 - Admiral

## MAHARAM MODE

80% Post-Consumer Recycled Polyester, 20% Polyester



009 - Clavicle



008 - Sycamore



021 - Blush



024 - Kermes



004 - Machine



033 - Denim

## KVADRAT DIVINA MD

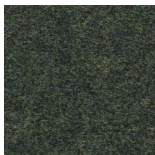
100% Wool



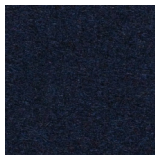
0213



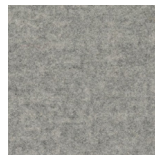
0343



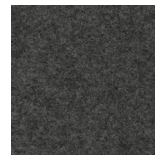
0973



0783



0120



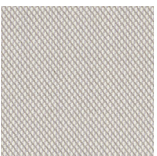
0170

## DIVINA MELANGE 3

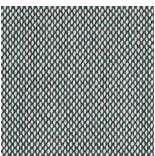
100% Wool

## KVADRAT STEELCUT TRIO 3

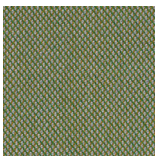
90% Wool 10% Nylon



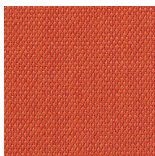
0205



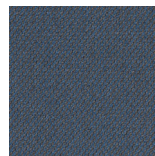
0916



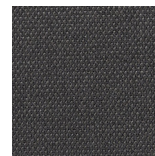
0946



0533



0756



0383

## KVADRAT TONUS 4

90% New wool, 10% Halanca



0135



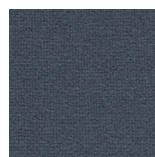
0240



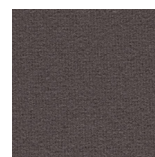
0454



0964



0764



0664

## MAHARAM BASK

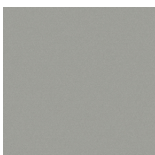
Leather



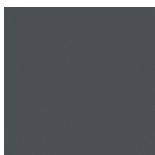
009 - Froth



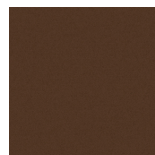
025 - Dew



007 - Tundra



004 - Nebula



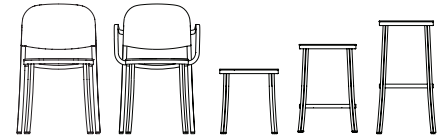
031 - Embark



001 - Apollo

# SPECIFICATIONS

**FABRIC 1:** COM/COL, Maharam Ledger, Maharam Messenger, Maharam Metric or Maharam Mode  
**FABRIC 2:** Kvadrat Divina Melange, Kvadrat Divina MD, Kvadrat Tonus or Kvadrat Steelcut Trio  
**LEATHER:** Maharam Leather Bask, Maharam Leather Steep, Maharam Leather Pace or Spinneybeck Volo



FABRIC 1

## MAHARAM LEDGER

Designed by Maharam  
**Application:** Seating  
**Composition:** 100% Polyurethane  
**Abrasion:** 100.000 Martindale  
**Lightfastness:** 6-7  
**Flame Test:** EN 1021-1, EN 1021-1/2 with treatment, NFPA 260, US Cal. Bull. 117-2013, BS 5852 Crib 5 with treatment  
**Care:** Please check [manufacturers website](#) for full care details.

## MAHARAM METRIC

Designed by Maharam  
**Application:** Seating  
**Composition:** 51% Post-Industrial Recycled Polyester, 49% Polyester  
**Abrasion:** 100.000 double rubs  
**Lightfastness:** 40+ hours  
**Flame Test:** US Cal. Bull. 117-2013  
**Care:** Please check [manufacturers website](#) for full care details.

FABRIC 2

## KVADRAT DIVINA MELANGE

Designed by Fins Sködt  
**Application:** Seating  
**Composition:** 100% New wool  
**Abrasion:** 45.000 Martindale  
**Lightfastness:** 6  
**Flame Test:** AS/NZS 1530.3, BS 5852 Crib 5, BS 5852 part 1, BS 5867 part 2 type B, EN 1021-1/2, EN 13501, C-s1, d0, glued, IMO FTP Code 2010 Part 8, NF D 60 013, NFPA 260, SN 198 898 5.3 with treatment, UNI 9175 11M, US Cal. Bull. 117-2013, ÖNORM B1/ Q1, BS 5852 ignition source 3  
**Care:** Please check [manufacturers website](#) for full care details.

## KVADRAT TONUS

Designed by Nina Keppel  
**Application:** Seating  
**Composition:** 90% New wool, 10% Halanca  
**Abrasion:** 100.000 Martindale  
**Lightfastness:** 6-7  
**Flame Test:** BS 5852 part 1, EN 1021-1/2, IMO FTP Code 2010 Part 8, NF D 60 013, NFPA 260, SN 198 898 5.3 with treatment, UNI 9175 11M, US Cal. Bull. 117-2013, ÖNORM B1/ Q1, BS 5852 Crib 5 with treatment  
**Care:** Please check [manufacturers website](#) for full care details.

LEATHER

## MAHARAM BASK

Designed by Maharam  
**Application:** Seating  
**Composition:** 100% Leather  
**Abrasion:** N/A  
**Lightfastness:** 7  
**Flame Test:** US Cal. Bull. 117-2013  
**Care:** Please check [manufacturers website](#) for full care details.

## MAHARAM PACE

Designed by Maharam  
**Application:** Seating  
**Composition:** 100% Leather  
**Abrasion:** N/A  
**Lightfastness:** 5  
**Flame Test:** US Cal. Bull. 117-2013, NFPA 260  
**Care:** Please check [manufacturers website](#) for full care details.

## MAHARAM MESSENGER

Designed by Maharam  
**Application:** Seating  
**Composition:** 78% Post industrial recycled, 15% Polyester, 7% Nylon  
**Abrasion:** 65.000 Martindale  
**Lightfastness:** 6-7  
**Flame Test:** BS 5852 part 1 with treatment, EN 1021-1/2 with treatment, US Cal. Bull. 117-2013, IMO FTP Code 2010 Part 8 with, NF D 60 013 with treatment, NFPA 260, EN 1021-1, BS 5852 Crib 5 with treatment  
**Care:** Please check [manufacturers website](#) for full care details.

## MAHARAM MODE

Designed by Maharam  
**Application:** Seating  
**Composition:** 80% Post-Consumer Recycled Polyester, 20% Polyester  
**Abrasion:** 100.000 Double Rubs  
**Lightfastness:** 6-7  
**Flame Test:** US Cal. Bull. 117-2013, NFPA 260.  
**Care:** Please check [manufacturers website](#) for full care details.

## KVADRAT DIVINA MD

Designed by Fins Sködt  
**Application:** Seating  
**Composition:** 100% New wool  
**Abrasion:** 45.000 Martindale  
**Lightfastness:** 5-7  
**Flame Test:** AS/NZS 1530.3, BS 5852 Crib 5, BS 5852 part 1, BS 5867 part 2 type B, EN 1021-1/2, EN 13501, C-s1, d0, glued, IMO FTP Code 2010 Part 8, NF D 60 013, NFPA 260, SN 198 898 5.3 with treatment, UNI 9175 11M, US Cal. Bull. 117-2013, ÖNORM B1/ Q1, BS 5852 ignition source 3  
**Care:** Please check [manufacturers website](#) for full care details.

## KVADRAT STEELCUT TRIO 3

Designed by Dijkmeijer & Ridolfo  
**Application:** Seating  
**Composition:** 90% New wool (worsted), 10% Nylon  
**Abrasion:** 100.000 Martindale  
**Lightfastness:** 5  
**Flame Test:** AS/NZS 3837, class 2, BS 5852 part 1, EN 1021-1/2, IMO FTP Code 2010 Part 8, NF D 60 013, NFPA 260, SN 198 898 5.3 with treatment, UNI 9175 11M, US Cal. Bull. 117-2013, ÖNORM B1/ Q1, BS 5852 Crib 5 with treatment, AS/NZS 1530.3, BS 5852 ignition source 3  
**Care:** Please check [manufacturers website](#) for full care details.

## MAHARAM STEEP

Designed by Maharam  
**Application:** Seating  
**Composition:** 100% Leather  
**Abrasion:** N/A  
**Lightfastness:** 4  
**Flame Test:** US Cal. Bull. 117-2013.  
**Care:** Please check [manufacturers website](#) for full care details.

## SPINNEYBECK VOLO

Designed by Spinneybeck  
**Application:** Seating  
**Composition:** 100% Leather  
**Abrasion:** N/A  
**Lightfastness:** 4  
**Flame Test:** ASTM E 84, Boston Fire Dept BFD IX-1, BS EN1021, BS 5852 Crib 5 and Crib 7, CAL 117, CAL 133, Cigarette Ignition Resistance NFPA 260, FAR 25.853(a) 60 sec vertical burn, 12 sec vertical burn, Oil burner-fire block, IMO Resolution A.652(16), IMO Resolution A.653(16) Part 2 and 5, NF P 95 512 1986 (Electric Burner Test).  
**Care:** Please check [manufacturers website](#) for full care details.



[www.emeco.net](http://www.emeco.net)

805 WEST ELM AVENUE, HANOVER PENNSYLVANIA 17331 USA, TELEPHONE + 1 717 637 5951, USA CALL TOLL FREE 800 366 5951, E-MAIL: [INFO@EMECO.NET](mailto:INFO@EMECO.NET)