

Eames Plastic Chair

Charles & Ray Eames, 1950

vitra.



Eames Plastic Chair

The Eames Plastic Chairs are renewed versions of the legendary Fiberglass Chair. As the very first industrially produced plastic chair, it was originally developed by the Eameses in collaboration with Zenith Plastics for the 'Low-Cost Furniture Design' competition organised by the Museum of Modern Art. In the current versions made of polypropylene, these chairs provide even greater comfort.

The wide selection of bases makes it possible to use the chairs in a variety of settings: from the dining room or home office to the garden. Different colours and upholstery versions provide many options for combining individual chairs to meet various needs.

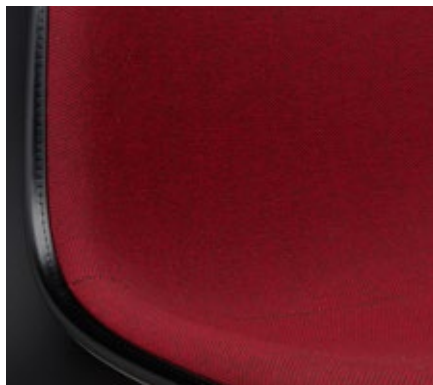
The Eames Plastic Armchair is complemented by the Eames Plastic Side Chair without armrests.



Charles & Ray Eames

Charles and Ray Eames are counted among the most important figures of twentieth-century design. Their work spans the fields of furniture design, filmmaking, photography and exhibition design. Vitra is the sole authorised manufacturer of Eames products for

Europe and the Middle East. When you own an Eames product made by Vitra, you know it is an original.



Hopsak

Hopsak is an expressive, flat plain-weave fabric made of polyamide. The duotone colours offer a multitude of design possibilities in high-contrast, brightly hued or subtle combinations of warp and weft threads. Highly durable and robust, Hopsak can be used in private interiors as well as public areas.

Hopsak is available in 35 colours.



CARE INSTRUCTIONS

Cover fabrics

To care for cover fabrics, vacuum regularly with an upholstery nozzle to remove dust and lint. Fresh spots and spills can usually be removed by blotting immediately with an absorbent, lint-free sponge or cloth. To prevent remaining traces of a ring mark, work from the edge of the spot towards the centre.

To avoid mineral residue from remaining on dark fabrics after drying, we recommend the use of household-grade distilled water for dampening. Stubborn stains can be treated by brushing dry stains lightly with a soft brush (for example, a clothes brush). Depending on the type of stain, the use of solvents may be necessary. In such cases, it is essential to consult a professional cleaner. Under no circumstances should cover fabrics be rubbed vigorously. Please be sure to consult a specialist before using any solvent-based cleaning product.

Plastics

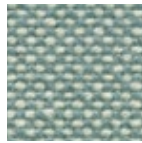
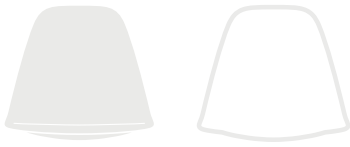
Vitra plastics are very robust, with excellent shape retention and colourfastness, making them resistant to a variety of chemicals and other substances. Furthermore, special additives retard the fading of colours due to UV radiation. However, the exposure of a chair to sunlight for prolonged periods may cause the colour to change over time. For this reason, limited exposure to sunlight is advisable. Please use a soft, damp, non-abrasive cloth to clean plastic surfaces and dry gently. For stain removal, we recommend the use of a mild, commercially available cleaning agent. Always avoid abrasive cleaning agents including powders and pastes as well as aggressive 'all-purpose' cleaners containing alcohol, which will damage the surface.

SEAT SHELLS AND UPHOLSTERY EASILY COORDINATED

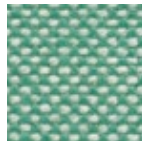
With a total of 14 shell colours, 35 upholstery shades and many different bases, the collection of Plastic Side Chairs and Plastic Armchairs offers around 100,000 possible combinations. This vast array of options makes it possible to colour-coordinate chairs to suit the specific interior.

Each shell colour can be paired with the Hopsak palette to define individual combinations.

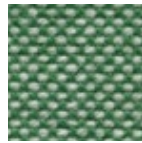
1. Duotones containing a light thread can be attractively paired with light-coloured shells and white welting.



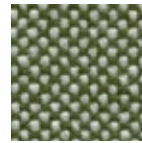
81
ice blue/ivory



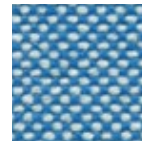
85
mint/ivory



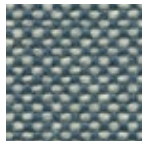
20
green/ivory



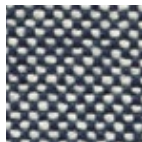
87
ivory/forest



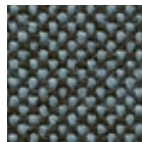
83
blue/ivory



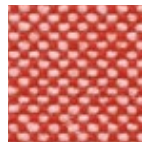
25
sea blue/ivory



74
dark blue/ivory



82
ice blue/moor brown



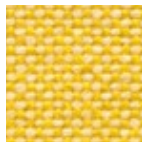
67
poppy red/ivory



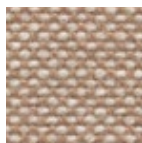
88
cognac/ivory



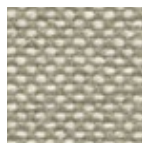
18
mustard/ivory



16
yellow/ivory



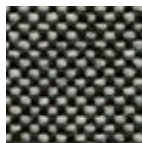
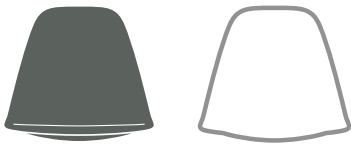
17
nude/ivory



79
warm grey/ivory



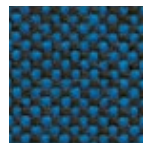
2. Duotones with a dark thread are very striking in combination with a dark shell and black welting.



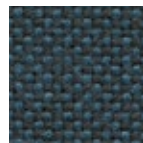
23
nero/ivory



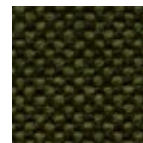
82
ice blue/moor brown



84
blue/moor brown



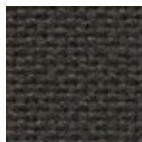
22
sea blue/dark grey



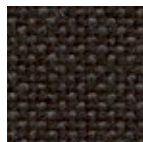
77
nero/forest



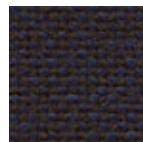
73
petrol/moor brown



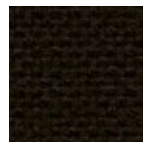
05
dark grey



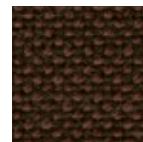
24
dark grey/nero



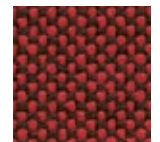
75
dark blue/moor brown



66
nero



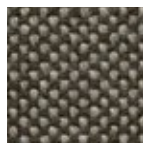
76
marron/moor brown



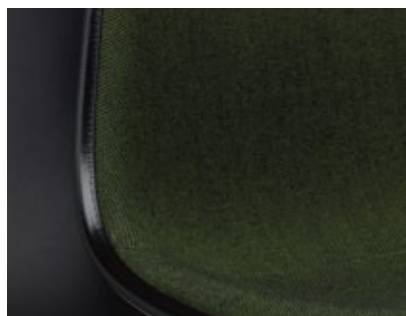
62
red/moor brown



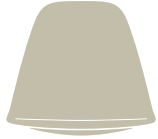
19
mustard/dark grey



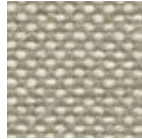
80
warm grey/moor brown



Each shell colour can be paired with the Hopsak palette to define individual combinations. The user can also pick up the colour of the shell in the fabric, or play with duotones and create accents.



11
pebble



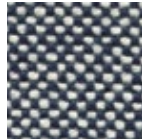
79
warm grey/ivory



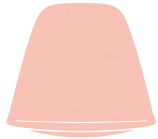
17
nude/ivory



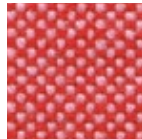
24
light grey



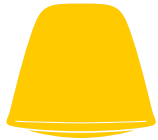
74
dark blue/ivory



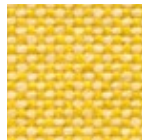
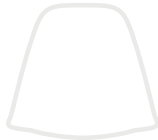
41
pale rose



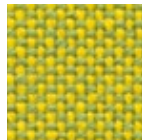
68
pink/poppy red



26
sunlight



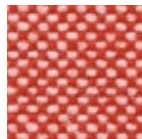
16
yellow/ivory



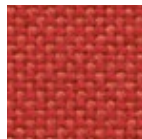
71
yellow/pastel green



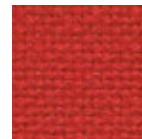
03
poppy red



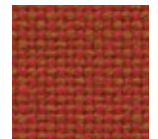
67
poppy red/ivory



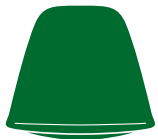
65
coral/poppy red



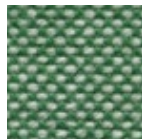
63
red/poppy red



96
red/cognac



42
green

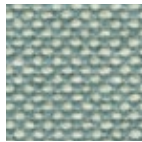
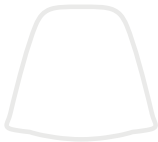


20
green/ivory





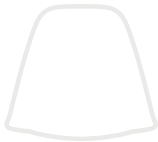
23
ice grey



81
ice blue/ivory



34
mustard



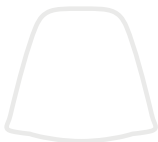
18
mustard/ivory



19
mustard/dark grey



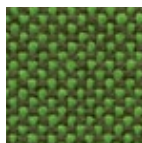
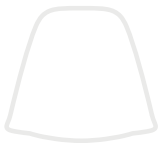
43
rusty orange



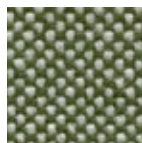
88
cognac/ivory



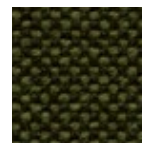
48
forest



70
grass green/forest



87
ivory/forest



77
nero/forest



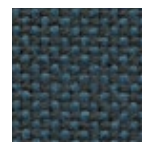
83
sea blue



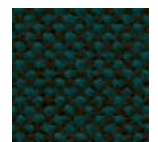
25
sea blue/ivory



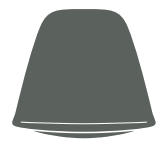
82
ice blue/moor brown



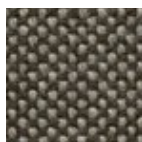
22
sea blue/dark grey



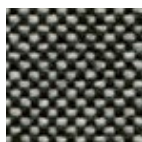
73
petrol/moor brown



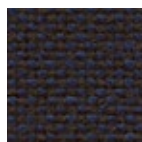
56
granite grey



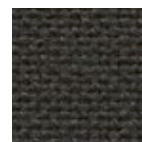
80
warm grey/moor brown



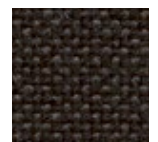
23
nero/ivory



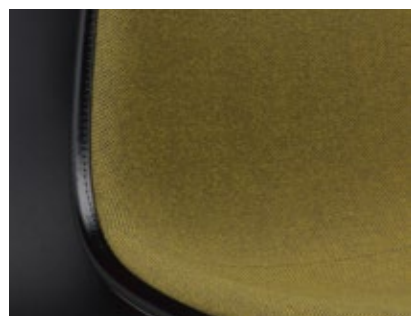
75
dark blue/moor brown



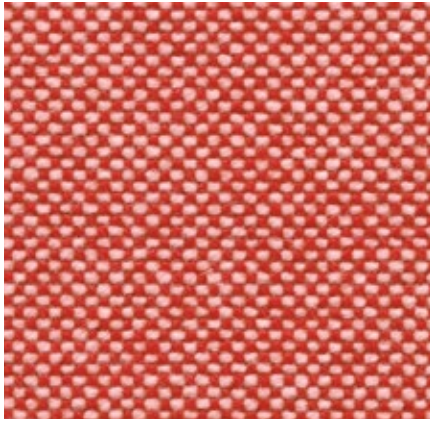
05
dark grey



24
dark grey/nero







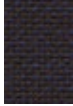











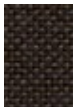







Hopsak Home/Office, F60














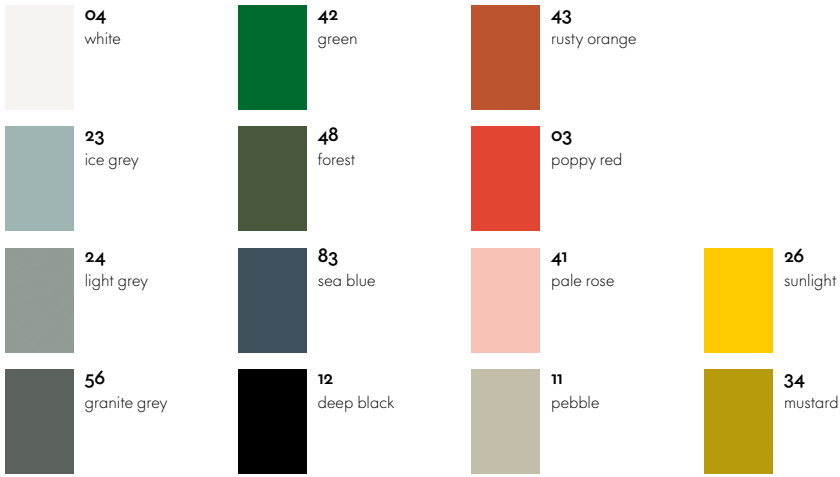
Hopsak is an expressive, flat plain-weave fabric made of polyamide. The duotone colours offer a multitude of design possibilities in high-contrast, brightly hued or subtle combinations of warp and weft threads. Highly durable and robust, Hopsak can be used in private interiors as well as public areas.

Hopsak is available in 35 colours.

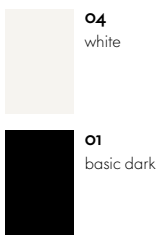
Material	100% polyamide
Weight	550 g/m ² (16.2 oz/y ²)
Width	127 cm +/- 2 cm (50")
Abrasion resistance	200,000 Martindale
Fastness to light	Type 6
Pilling	Grade 4-5
Fastness to rubbing	Grade 4-5 dry and wet

 71 yellow/pastel green	 85 mint/ivory	 73 petrol/moor brown	 84 blue/moor brown	 75 dark blue/moor brown	 23 nero/ivory
 69 grass green/ivory	 20 green/ivory	 81 ice blue/ivory	 83 blue/ivory	 05 dark grey	 80 warm grey/moor brown
 70 grass green/forest	 86 mint/forest	 82 ice blue/moor brown	 25 sea blue/ivory	 24 dark grey/nero	 76 marron/moor brown
 87 ivory/forest	 77 nero/forest	 22 sea blue/dark grey	 74 dark blue/ivory	 66 nero	 62 red/moor brown

 96 red/cognac	 67 poppy red/ivory	
 63 red/poppy red	 88 cognac/ivory	 16 yellow/ivory
 65 coral/poppy red	 17 nude/ivory	 18 mustard/ivory
 68 pink/poppy red	 79 warm grey/ivory	 19 mustard/dark grey



Seat shell



Edge

BASES

