

# Fauteuil Direction Pivotant

Jean Prouvé, 1951

**vitra.**



Although it is immediately evident that Fauteuil Direction Pivotant hails from a different era, it appears in no way outdated or old-fashioned. This is due to the distinctive aesthetic of French designer, architect and engineer Jean Prouvé, who always placed an uncompromising focus on functional requirements.

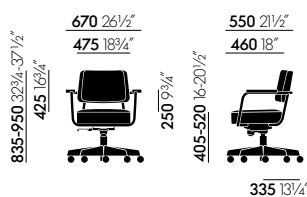
The voluminous seat and backrest cushions rest on a sleek frame made of tubular steel and bent sheet metal, while the wooden armrests lend the office chair a touch of familiar comfort. The swivel seat of Fauteuil Direction Pivotant is height adjustable, and the backward tilt mechanism can be adapted to the individual user's weight. These features are paired with the generous upholstery to ensure optimum comfort. Leather or fabric covers are available in many different colours, making it easy to find the ideal chair for any type of business workplace or home office.

The swivel seat of Fauteuil Direction Pivotant is height adjustable, and the backward tilt mechanism can be adapted to the individual user's weight. These features are paired with the generous upholstery to ensure optimum comfort. Leather or fabric covers are available in many different colours, making it easy to find the ideal chair for any type of business workplace or home office.

## Materials

- **Seat and backrest:** polyurethane filling; cover in fabric or leather.
- **Armrests:** solid wood in natural oak with oiled finish, dark stained oak with protective natural lacquer finish, or American walnut with oiled finish.
- **Base:** five-star base made of bent sheet steel and tubular steel, powder-coated (smooth). Equipped with double castors in basic dark, Ø 60 mm.
- **Seat mechanism:** adjustable backward tilt, lockable in the forward position. Continuous seat height adjustment with gas spring.
- **Origin of wood:** oak (*Quercus robur*) from Western Europe and/or Poland; American walnut (*Juglans nigra*) from the USA.
- **Note:** the steel frame in Métal Brut has a raw irregular surface protected by a transparent powder coating.

## DIMENSIONS



## Fauteuil Direction Pivotant

COLOURS AND MATERIALS



**70**  
natural solid oak, oiled



**75**  
solid American walnut, oiled



**04**  
dark stained solid oak, with protective varnish

Armrests



**88**  
Prouvé Blanc Colombe (Ecrú) powder-coated (smooth)



**06**  
Japanese red powder-coated (smooth)



**12**  
deep black powder-coated (smooth)

Base frame  
Colour group 1



**18**  
Prouvé Blé Vert powder-coated (smooth)



**41**  
Prouvé Bleu Marcoule powder-coated (smooth)



**14**  
Prouvé Bleu Dynastie powder-coated (smooth)

Base frame  
Colour group 2



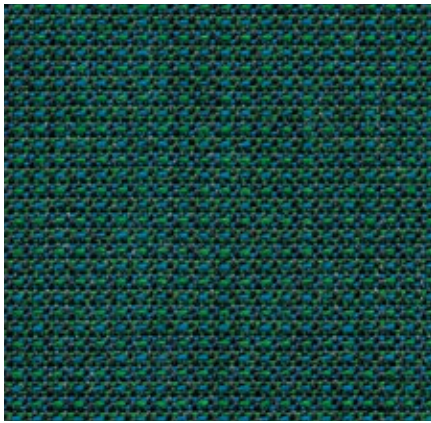
**13**  
Prouvé Gris Vermeer powder-coated (smooth)



**94**  
Prouvé Métal Brut powder-coated (transparent, smooth)

# Tress Home/Office, F80

**vitra.**



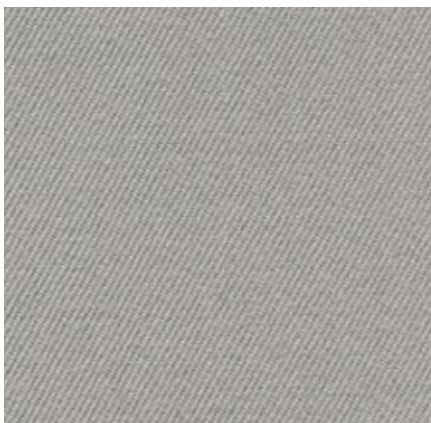
Tress is a flat woven fabric with a lively appearance that derives from the contrast between its even structure and the natural melange of colours. The combination of yarns with varied hues creates a harmonious and yet vibrant look. Thanks to its high wool content, Tress is a durable, easy-care material with a home-like aesthetic.

Material	8% polyamide, 73% new wool, 19% polyester
Weight	310 g/m <sup>2</sup> (9.1 oz/y <sup>2</sup> )
Width	142 cm +/- 2 cm (56")
Abrasion resistance	40,000 Martindale
Fastness to light	Type 6
Pilling	Grade 4-5
Fastness to rubbing	Grade 4-5 dry and wet

Tress is available in 22 colours.



# Twill Home/Office, F60



The high percentage of natural fibres gives Twill very pleasant tactile qualities and an inviting appearance. Extremely durable with excellent abrasion resistance, it combines the qualities typically found in home furnishings with the demanding requirements of the project sector.

Material	30% polyamide, 70% new wool
Weight	325 g/m <sup>2</sup> (9.6 oz/y <sup>2</sup> )
Width	155 cm +/- 2 cm (61")
Abrasion resistance	100,000 Martindale
Fastness to light	Type 6
Pilling	Grade 4-5
Fastness to rubbing	Grade 4-5 dry and wet

Twill is available in 18 colours.



# Volo Home/Office, F6o

**vitra.**



Volo is a finely structured wool blend with a refined weave that gives it an elegant appearance. This expressive textile shows strong solid colours to full advantage while simultaneously offering pleasant tactile qualities. With its soft look and appealing texture, Volo is a perfect fit for home interiors, but it is also well suited for use in the contract sector.

Volo is available in 17 colours.

Material	15% polyamide, 85% new wool
Weight	435 g/m <sup>2</sup> (12.8 oz/y <sup>2</sup> )
Width	145 cm +/- 3 cm (57")
Abrasion resistance	100,000 Martindale
Fastness to light	Type 6
Pilling	Grade 4-5
Fastness to rubbing	Grade 4-5 dry and wet



**04**  
lemon



**56**  
teal blue



**14**  
iron grey



**13**  
moor brown



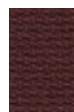
**06**  
summer grass



**51**  
ice blue



**15**  
mid-grey



**69**  
marron



**07**  
fern



**10**  
indigo



**02**  
dark grey



**77**  
brick



**08**  
green-grey



**11**  
night blue



**16**  
black



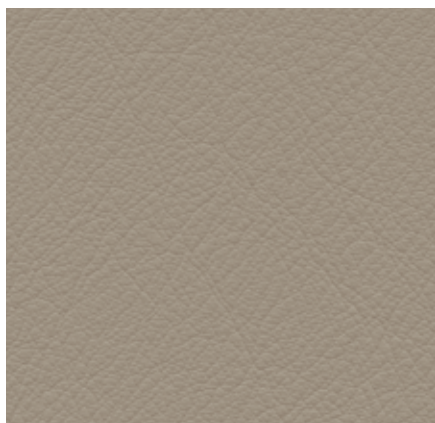
**12**  
red



**05**  
canola

# Leather Premium F Home/Office, L50

**vitra.**



Leather Premium F is a relatively smooth cowhide leather with a flat grain and fine top sheen. It is dyed-through, lightly pigmented and processed with a tanning agent extracted from olive tree leaves (a waste product of the olive harvest). Leather Premium F is available in 22 colours.

Material

Semi-aniline nappa leather with a very soft and supple feel, vegetable tanned

Fastness to light

Type 5

Thickness

1.1–1.3 mm

Fastness to rubbing

Grade 4 dry and wet



72  
snow



59  
jade



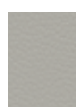
66  
nero



69  
marron



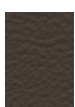
74  
olive



64  
cement



58  
khaki



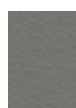
77  
brown



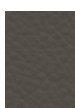
93  
brandy



75  
camel



65  
granite



61  
umbra grey



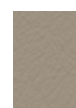
68  
chocolate



22  
red stone



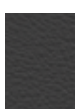
62  
ochre



71  
sand



60  
smoke blue



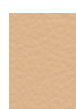
67  
asphalt



87  
plum



97  
cognac



63  
cashew



73  
clay

