



BREGENZ



BREGENZ

SCHEDA TECNICA/ TEST CERTIFICATE

Composizione/Composition:

PLFR 100%

Altezza/Width:

138cm UNI EN 1773

Peso/Weight:

g/m² (± 4 %) 500 UNI 5114

Variazioni dimensionali ai lavaggi/Dimensional stability

DRY-CLEANING

EN ISO 3175 1% weft /warp

MACHINE WASHING

EN ISO 6330 1% weft /warp

HAND WASHING

EN ISO 6330 1% weft /warp

Solidità del Colore/Colour fastness

Solidità colori alla Luce (Xenotest)-Light

4-5 ISO 105 B02

Caratteristiche fisico-meccaniche/Technical characteristics

Resistenza del tessuto al pilling- Brush Test

UNI-EN 12945/2 4

Resistenza del tessuto all'abrasione- Martindale

UNI-EN 12947/2 45.000

Reazione al Fuoco/Reaction on fire

UNI 9175 CL 1.IM

UNI 8456 CL1

UNI EN 1021 PART 1/2

BS5852 B2

B09
001



B09
002



B09
003



B09
004



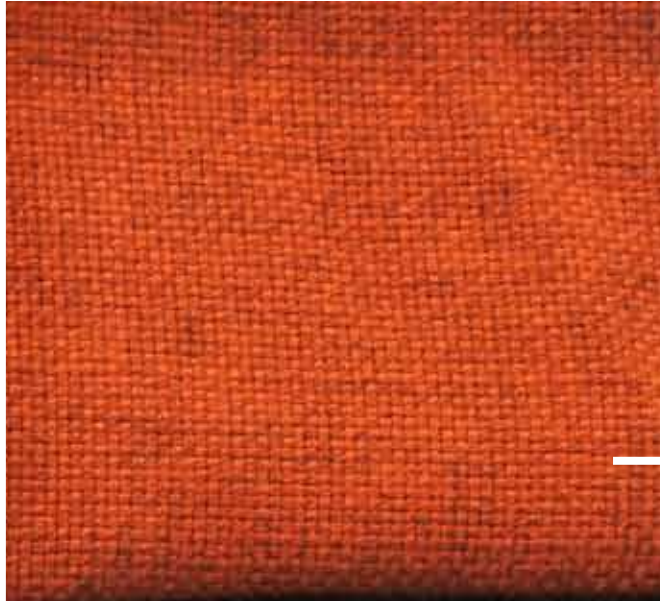
B09
005



B09
006



B09
007



B09
008



B09
009



B09
010



B09
011



B09
012



Gebrüder Thonet Vienna GmbH (GTV)
Prinz Eugen Straße 42
1040 Wien, (Austria)
Offices of the trademarks' licensee
Production Furniture International S.p.A
Via Foggia, 23/H - 10152 Torino Italy

www.gebruederthonetvienna.com



IMST



IMST

SCHEDA TECNICA/ TEST CERTIFICATE

Composizione/Composition:	41%CO, 34%VI, 22%PL, 3%LI
Altezza/Width:	140cm UNI EN 1773
Peso/Weight:	g/m ² (± 4 %) 780 UNI 5114

Variazioni dimensionali ai lavaggi/Dimensional stability

DRY-CLEANING
MACHINE WASHING
HAND WASHING

Solidità del Colore/Colour fastness

Solidità colori alla Luce (Xenotest)-Light 4-5 ISO 105 B02

Caratteristiche fisico-meccaniche/Technical characteristics

Resistenza del tessuto al pilling- Brush Test	UNI-EN 12945/2	4
Resistenza del tessuto all'abrasione- Martindale	UNI-EN 12947/2	25.000

Reazione al Fuoco/Reaction on fire

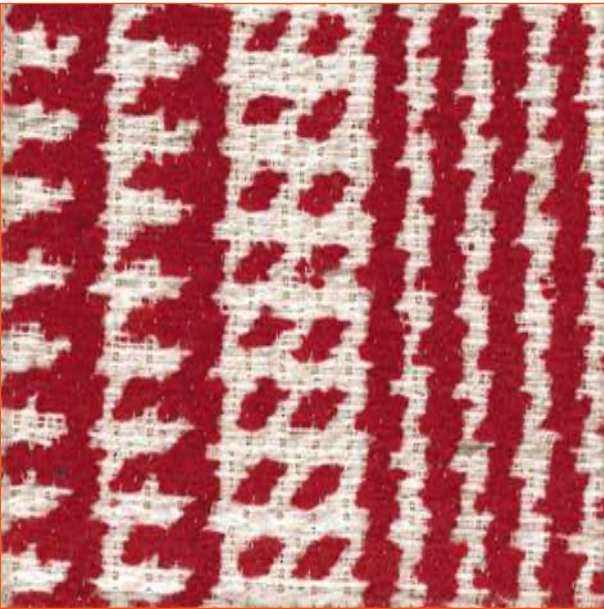
B10
001



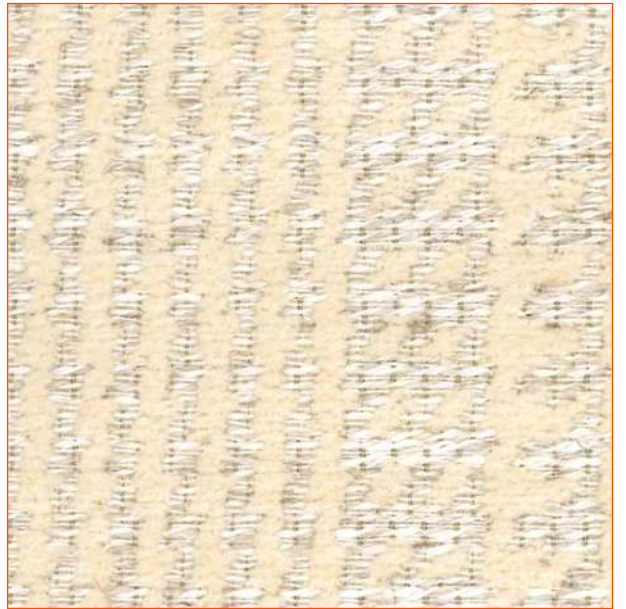
B10
002



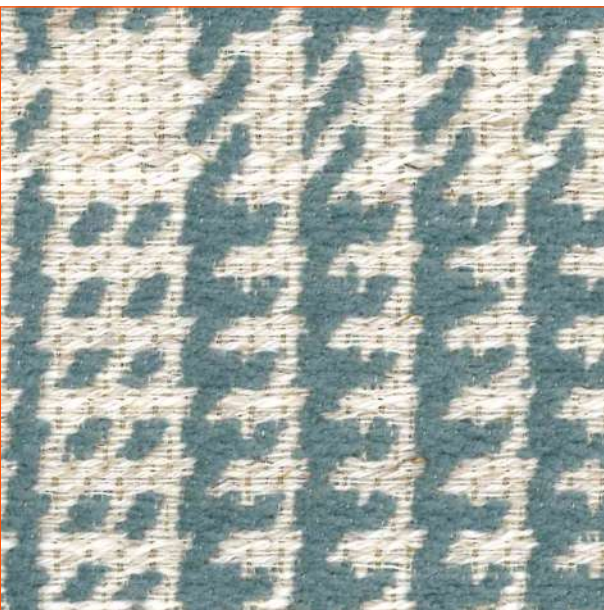
B10
003



B10
004



B10
005



Gebrüder Thonet Vienna GmbH (GTV)
Prinz Eugen Straße 42
1040 Wien, (Austria)
Offices of the trademarks' licensee
Production Furniture International S.p.A
Via Foggia, 23/H - 10152 Torino Italy

www.gebruederthonetvienna.com

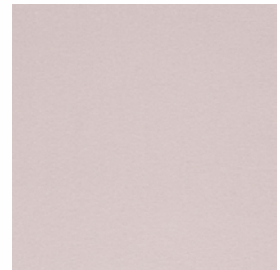
Hero Cat. B
Merit Cat. B
Re-wool Cat. B



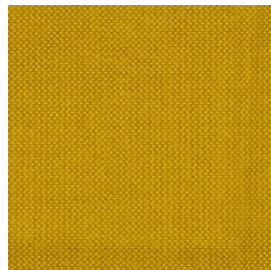
Hero Col. 201



Hero Col. 441



Hero Col. 601



Merit Col. 025



Merit Col. 024



Re-wool Col. 648

Coda 2 Designed by Norway Says & Per Bjørnsen

Application Offices, hotels, institutions, domestic use. Great durability.
Description 90% new wool, 10% nylon. Width app. 55 inches (140 cm). Weight app. 860 g/lin.m. Foreign fibres may occur in light colours. Material dyed. Colour differences may occur.
Abrasion: App. 100,000 rubs acc. to the Martindale method EN ISO 12947.
Lightfastness (ISO) 5-7. Pilling (EN ISO) 4. Fastness to rubbing (ISO) dry 4-5, wet 4. Airflow 200 Pa s/m. Flame resistance: AS/NZS 3837. BS 5852 Crib 5 with treatment. BS 5852 part 1. EN 1021-1/2. IMO FTP Code 2010:Part 8. NF D 60 013. NFPA 260. SN 198 898 5.3 with treatment. UNI 9175 11M. US Cal. Bull. 117-2013. (Copy of test report available).
Care Please see www.kvadrat.dk/care-and-maintenance.

Divina Melange 3 Designed by Finn Sködt

Application Offices, hotels, institutions, domestic use.
Description 100% new wool. Width app. 59 inches (150 cm). Weight app. 840 g/lin.m. Piece dyed. Colour differences may occur.
Abrasion: App. 45,000 rubs acc. to the Martindale method EN ISO 12947.
Lightfastness (ISO) 5-7. Pilling (EN ISO) 3. Fastness to rubbing (ISO) dry 4-5, wet 4. Sound absorption (EN ISO 354) 0.60/Class C (flat), 0.70/Class C (waved). Airflow 678 Pa s/m. Flame resistance: AS/NZS 1530.3. BS 5852 Crib 5. BS 5852 ignition source 3. BS 5852 Part 1. BS 5867 Part 2 Type B. EN 1021-1/2. EN 13501, C-s1, d0. IMO FTP Code 2010:Part 8. NF D 60 013. NFPA 260. SN 198 898 5.3 with treatment. UNI 9175 11M. US Cal. Bull. 117-2013. ÖNORM B1 / Q1. (Copy of test report available).
Care Please see www.kvadrat.dk/care-and-maintenance.

Noise Designed by Raf Simons

Application Offices, hotels, institutions, domestic use. Great durability.
Description 96% new wool, worsted. 4% nylon. Width app. 55 inches (140 cm). Weight app. 715 g/lin.m. Yarn dyed. Colour differences may occur.
Abrasion: App. 30,000 rubs acc. to the Martindale method EN ISO 12947.
Lightfastness (ISO) 6-7. Pilling (EN ISO) 4. Fastness to rubbing (ISO) dry 4-5, wet 4-5. Flame resistance: BS 5852 Crib 5 with treatment. BS 5852 part 1. DIN 4102 B2. EN 1021-1/2. IMO FTP Code 2010:Part 8. NF D 60 013. UNI 9175 11M. US Cal. Bull. 117-2013. (Copy of test report available).
Care Please see www.kvadrat.dk/care-and-maintenance.

Ria Designed by Raf Simons

Application Offices, hotels, institutions, domestic use. Great durability.
Description 84% new wool, worsted. 12% viscose. 4% nylon. Width app. 55 inches (140 cm). Weight app. 980 g/lin.m. Yarn dyed. Colour differences may occur.
Abrasion: App. 50,000 rubs acc. to the Martindale method EN ISO 12947.
Lightfastness (ISO) 7. Pilling (EN ISO) 4. Fastness to rubbing (ISO) dry 3-5, wet 3-5. Flame resistance: BS 5852 Crib 5 with treatment. BS 5852 part 1. EN 1021-1/2. IMO FTP Code 2010:Part 8. NF D 60 013. UNI 9175 11M. US Cal. Bull. 117-2013. (Copy of test report available).
Care Please see www.kvadrat.dk/care-and-maintenance.

Canvas 2 Designed by Giulio Ridolfo

Please see description on Black/White Card

Harald 3 Designed by Raf Simons and Fanny Aronsen

Please see description on Black/White Card

Raas Designed by Doshi Levien

Please see description on Black/White Card

Safire Designed by Sahco

Please see description on Black/White Card

Steelcut 2 Designed by Frans Dijkmeijer and Giulio Ridolfo

Please see description on Black/White Card

Twill Weave Designed by Jonathan Olivares

Please see description on Black/White Card

Divina 3 Designed by Finn Sködt

Application Offices, hotels, institutions, domestic use.
Description 100% new wool. Width app. 59 inches (150 cm). Weight app. 840 g/lin.m. Piece dyed. Foreign fibres may occur in light colours. Colour differences may occur.
Abrasion: App. 45,000 rubs acc. to the Martindale method EN ISO 12947.
Lightfastness (ISO) 5-7. Pilling (EN ISO) 3. Fastness to rubbing (ISO) dry 4-5, wet 4. Sound absorption (EN ISO 354) 0.60/Class C (flat), 0.70/Class C (waved). Airflow 678 Pa s/m. Flame resistance: AS/NZS 1530.3. BS 5852 Crib 5. BS 5852 Part 1. BS 5867 Part 2 Type B. EN 1021-1/2. EN 13501, C-s1, d0. IMO FTP Code 2010:Part 8. NF D 60 013. NFPA 260. UNI 9175 11M. US Cal. Bull. 117-2013. ÖNORM B1 / Q1. (Copy of test report available).
Care Please see www.kvadrat.dk/care-and-maintenance.

Merit by Maharam Designed by Maharam Design Studio

Application Offices, hotels, institutions, domestic use. Great durability.
Description 76% post-consumer recycled polyester, 24% polyester. Stain resistant (PFOA free). Width app. 54 inches (137 cm). Weight app. 500 g/lin.m. Yarn dyed. Colour differences may occur.
Abrasion: App. 85,000 rubs acc. to the Martindale method EN ISO 12947. App. 100,000 double rubs acc. to Wyzenbeek method. **Lightfastness (ISO) 6-7. Pilling (EN ISO) 4. Fastness to rubbing (ISO) dry 4-5, wet 4-5. Flame resistance:** BS 476 part 7 + 6 with treatment. BS 5852 Crib 5 with treatment. BS 5852 part 1 with treatment. EN 1021-1/2. US Cal. Bull. 117-2013. (Copy of test report available).
Care Please see www.kvadrat.dk/care-and-maintenance.

Pilot Designed by Raf Simons

Application Offices, hotels, institutions, domestic use. Great durability.
Description 82% new wool, worsted. 10% polyester. 8% nylon. Width 55 inches (140 cm). Weight app. 770 g/lin.m. Yarn dyed. Colour differences may occur.
Abrasion: App. 70,000 rubs acc. to the Martindale method EN ISO 12947.
Lightfastness (ISO) 7. Pilling (EN ISO) 4. Fastness to rubbing (ISO) dry 4-5, wet 3-5. Flame resistance: BS 5852 Crib 5 with treatment. BS 5852 part 1. DIN 4102 B2. EN 1021-1/2. IMO FTP Code 2010:Part 8. UNI 9175 11M. US Cal. Bull. 117-2013. ÖNORM B1 / Q1. (Copy of test report available).
Care Please see www.kvadrat.dk/care-and-maintenance.

Skye Designed by Georgina Wright

Application Offices, hotels, institutions, domestic use. Great durability.
Description 90% new wool, worsted, 10% nylon. Width app. 55 inches (140 cm). Weight app. 580 g/lin.m. Yarn dyed. Colour differences may occur.
Abrasion: App. 100,000 rubs acc. to the Martindale method EN ISO 12947.
Lightfastness (ISO) 6. Pilling (EN ISO) 4. Fastness to rubbing (ISO) dry 4-5, wet 4-5. Flame resistance: AS/NZS 3837 Class 2. BS 5852 Crib 5 with treatment. BS 5852 part 1. EN 1021-1/2. IMO FTP Code 2010:Part 8. NF D 60 013. SN 198 898 5.3 with treatment. UNI 9175 11M. US Cal. Bull. 117-2013. (Copy of test report available).
Care Please see www.kvadrat.dk/care-and-maintenance.

Fuse Designed by Raf Simons

Please see description on Black/White Card

Hero Designed by Patricia Urquiola

Please see description on Black/White Card

Re-wool Designed by Margrethe Odgaard

Please see description on Black/White Card

San Designed by Louise Sigvardt

Please see description on Black/White Card

Steelcut Trio 3 Designed by Frans Dijkmeijer and Giulio Ridolfo

Please see description on Black/White Card

Vidar 3 Designed by Raf Simons and Fanny Aronsen

Please see description on Black/White Card

Molly 2 Cat. B
Revive Cat.B
Re-Wool Cat. B
Patio Outdoor Cat. B



Molly 2 Col. 194



Molly 2 Col. 170



Molly 2 Col. 152



Molly 2 Col. 164



Molly 2 Col. 112



Molly 2 Col. 116



Molly 2 Col. 122



Molly 2 Col. 154



Molly 2 Col. 114



Molly 2 Col. 166



Molly 2 Col. 196



Re-wool Col. 558



Re-wool Col. 378



Re-wool Col. 218



Re-wool Col. 458



Re-wool Col. 128



Re-wool Col. 408



Re-wool Col. 868



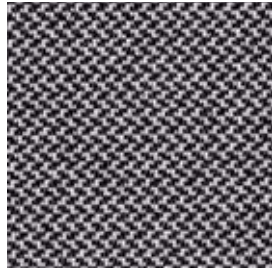
Re-wool Col. 828



Re-wool Col. 158



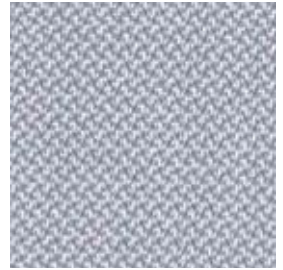
Revive 1 Col. 284



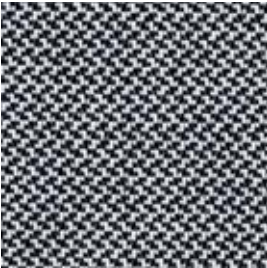
Revive 1 Col. 164



Revive 1 Col. 454



Revive 1 Col. 144



Revive 1 Col. 154



Revive 1 Col. 194



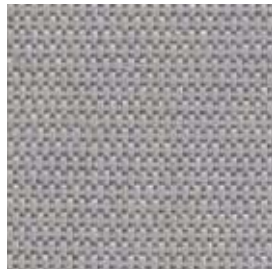
Revive 1 Col. 974



Revive 1 Col. 944



Revive 1 Col. 184



Patio Col. 150



Patio Col. 210



Patio Col. 340



Patio Col. 370



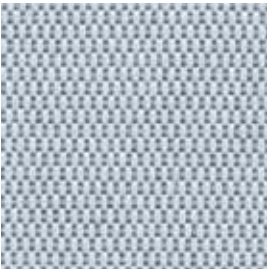
Patio Col. 230



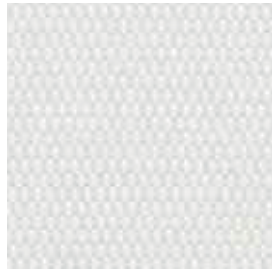
Patio Col. 110



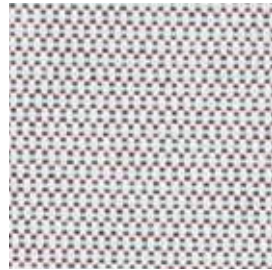
Patio Col. 170



Patio Col. 140



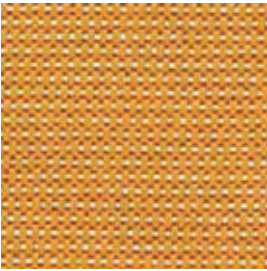
Patio Col. 200



Patio Col. 220



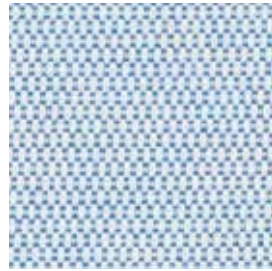
Patio Col. 970



Patio Col. 450



Patio Col. 780



Patio Col. 730



Patio Col. 570

Molly 2 Designed by Åsa Pärson

Application Offices, hotels, institutions, domestic use. Great durability.

Description 100% new wool, worsted. Width app. 55 inches (140 cm). Weight app. 690 g/lin.m, 22.1 oz/ly. The fabric is made of undyed wool fibres; hence colour differences will occur.

Abrasion: App. 75-100,000 rubs, depending on colour, acc. to the Martindale method EN ISO 12947. **Lightfastness** (ISO) 6-7, colour 110 4-5. **Pilling** (EN ISO) 3-4. **Fastness to rubbing** (ISO) dry 4-5, wet 4-5. **Flame resistance:** BS 5852 Crib 5 with treatment. BS 5852 part 1. EN 1021-1/2. IMO FTP Code 2010:Part 8. NF D 60 013. NFPA 260. UNI 9175 1IM. US Cal. Bull. 117-2013. ÖNORM B1 / Q1. (Copy of test report available).

Care Please see www.kvadrat.dk/care-and-maintenance.

Re-wool Designed by Margrethe Odgaard

Application Offices, hotels, institutions, domestic use. Great durability.

Description 45% recycled wool, 45% new wool, worsted, 10% nylon. Width app. 55 inches (140 cm). Weight app. 540 g/lin.m, 17.3 oz/ly. Yarn dyed. Colour differences will occur.

Abrasion: App. 100,000 rubs acc. to the Martindale method EN ISO 12947. **Lightfastness** (ISO) 5-7. **Pilling** (EN ISO) 4. **Fastness to rubbing** (ISO) dry 4-5, wet 4-5. **Sound absorption** (EN ISO 354) 0.50/Class D (flat), 0.75/Class C (waved).

Airflow 258 Pa s/m. **Flame resistance:** AS/NZS 1530.3. AS/NZS 3837 Class 2. BS 5852 Crib 5 with treatment. BS 5852 ignition source 3. BS 5852 part 1. EN 1021-1/2. IMO FTP Code 2010:Part 8. NF D 60 013. SN 198 898 5.3 with treatment. UNI 9175 1IM. US Cal. Bull. 117-2013. ÖNORM B1 / Q1. (Copy of test report available).

Care Please see www.kvadrat.dk/care-and-maintenance.

Revive 1 Designed by Georgina Wright

Application Offices, hotels, institutions, domestic use. Great durability. In accordance with California AB2998 or similar regulation in other states of North America, this product should not be used for residential upholstery in USA.

Description 100% recycled polyester FR. Width app. 55 inches (140 cm). Weight app. 13.5 oz/ly (420 g/lin.m). Yarn dyed. Colour differences may occur.

Abrasion: App. 60,000 rubs acc. to the Martindale method EN ISO 12947.

Lightfastness (ISO) 5-7. **Pilling** (EN ISO) 4-5. **Fastness to rubbing** (ISO) dry 5, wet 4-5. **Sound absorption** (EN ISO 354) 0.55/Class D (flat), 0.80/Class B (waved).

Airflow 597 Pa s/m. **Flame resistance:** AS/NZS 3837 Class 1. BS 5852 Crib 5 with treatment. BS 5852 ignition source 3. BS 5852 Part 1 with treatment. DIN 4102 B1. EN 1021-1/2. GB 50222 B1 with treatment. IMO FTP Code 2010:Part 8. NF D 60 013 with treatment. NFPA 701. SN 198 898 5.3 with treatment. UNI 9175 1IM. UNI 9177 Classe 1. US Cal. Bull. 117-2013. ÖNORM B1 / Q1. (Copy of test report available).

Care Please see www.kvadrat.dk/care-and-maintenance.

Patio Outdoor Designed by Karina Nielsen Rios

Application Out- and indoor upholstery for both domestic and public decoration. Mildew, chlorine, seawater and UV resistant. In accordance with California AB2998 or similar regulation in other states of North America, this product should not be used for residential upholstery in USA.

Description 100% Trevira CS. Fluorocarbon-free water repellent finish. Width app. 55 inches (140 cm). Weight app. 18 oz/ly (560 g/lin.m). Yarn dyed. Colour differences may occur.

Abrasion: App. 50,000 rubs acc. to the Martindale method EN ISO 12947.

Lightfastness (ISO) 7. Fastness to weathering (ISO) 6-7. **Pilling** (EN ISO) 4-5.

Fastness to rubbing (ISO) dry 4-5, wet 4-5. Spray test (EN) 3. Resistant to visible soiling (BS) min. 4. **Sound absorption** (EN ISO 354) 0.50/Class D (flat),

0.85/Class B (waved). **Airflow** 3086 Pa s/m. **Flame resistance:** AS/NZS 3837 Class 1. ASTM E84 class A. BS 5852 Crib 5. BS 5852 ignition source 3. BS 5852 part 1 with treatment. DIN 4102 B1. EN 1021-1/2. IMO FTP Code 2010:Part 8. NF D 60 013. NF P 92 507 M1. NFPA 701. UNI 9175 1IM. UNI 9177 classe 1. US Cal. Bull. 117-2013. ÖNORM B1 / Q1. (Copy of test report available).

Care Please see www.kvadrat.dk/care-and-maintenance.



The mark of responsible forestry

Hero Cat. B
Merit Cat. B
Remix 2 Cat. B
Re-wool Cat. B

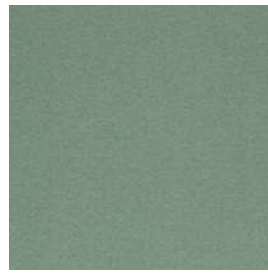




Hero Col. 991



Hero Col. 791



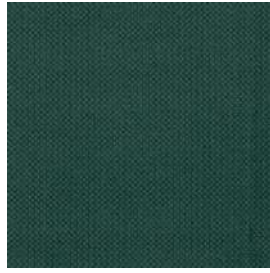
Hero Col. 931



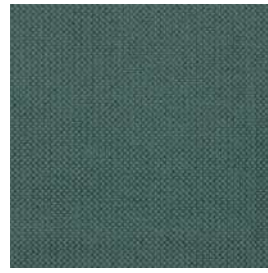
Hero Col. 711



Merit Col. 007



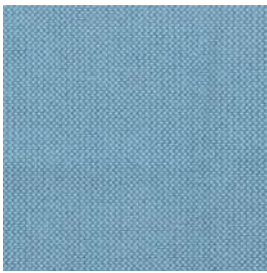
Merit Col. 019



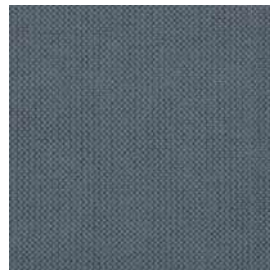
Merit Col. 017



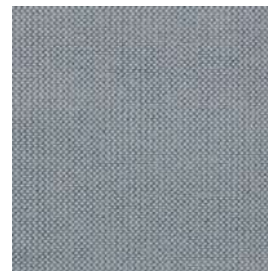
Merit Col. 006



Merit Col. 011



Merit Col. 012



Merit Col. 009



Merit Col. 005



Re-wool Col. 718



Remix 2 Col. 762



Remix 2 Col. 733



Re-wool Col. 758

Divina MD Designed by Finn Sködt

Application Offices, hotels, institutions, domestic use.

Description 100% new wool. Width app. 59 inches (150 cm). Weight app. 840 g/lin.m. Material dyed. Colour differences will occur.

Abrasion: App. 45,000 rubs acc. to the Martindale method EN ISO 12947.

Lightfastness (ISO) 5-6. Pilling (EN ISO) 3. Fastness to rubbing (ISO) dry 4-5, wet 4. Sound absorption (EN ISO 354) 0.60/Class C (flat), 0.70/Class C (waved).

Airflow 678 Pa s/m. **Flame resistance:** AS/NZS 1530.3. BS 5852 Crib 5. BS 5852 Part 1. EN 1021-1/2. EN 13501, C-s1, d0. IMO FTP Code 2010:Part 8. NF D 60 013. NFPA 260. SN 198 898 5.3 with treatment. UNI 9175 11M. US Cal. Bull. 117-2013. ÖNORM B1 / Q1. (Copy of test report available).

Care Please see www.kvadrat.dk/care-and-maintenance.

Hallingdal 65 Designed by Nanna Ditzel

Application Offices, hotels, institutions, domestic use. Great durability.

Description 70% new wool, 30% viscose. Width 51 inches (130 cm). Weight app. 795 g/lin.m. Material dyed. Foreign fibre may occur in light colours. Colour differences may occur.

Abrasion: App. 100,000 rubs acc. to the Martindale method EN ISO 12947.

Lightfastness (ISO) 5-7. Pilling (EN ISO) 3-4. Fastness to rubbing (ISO) dry 4-5, wet 3-5. Sound absorption (EN ISO 354) 0.45/Class D (flat), 0.70/Class C (waved). Airflow 210 Pa s/m. **Flame resistance:** AS/NZS 1530.3. AS/NZS 3837. BS 5852 Crib 5. BS 5852 part 1. EN 1021-1/2. GB 50222 B1 with treatment. IMO FTP Code 2010:Part 8. NF D 60 013. NFPA 260. SN 198 898 5.3 with treatment. UNI 9175 11M. US Cal. Bull. 117-2013. ÖNORM B1 / Q1. (Copy of test report available).

Care Please see www.kvadrat.dk/care-and-maintenance.

Pilot Designed by Raf Simons

Application Offices, hotels, institutions, domestic use. Great wearability.

Description 82% new wool, worsted. 10% polyester. 8% nylon. Width 55 inches (140 cm). Weight app. 770 g/lin.m. Yarn dyed. Colour differences may occur.

Abrasion: App. 70,000 rubs acc. to the Martindale method EN ISO 12947.

Lightfastness (ISO) 7. Pilling (EN ISO) 4. Fastness to rubbing (ISO) dry 4-5, wet 3-5. Flame resistance: BS 5852 Crib 5 with treatment. BS 5852 part 1. DIN 4102 B2. EN 1021-1/2. IMO FTP Code 2010:Part 8. UNI 9175 11M. US Cal. Bull. 117-2013. ÖNORM B1 / Q1. (Copy of test report available).

Care Please see www.kvadrat.dk/care-and-maintenance.

Canvas 2 Designed by Giulio Ridolfo

Please see description on [Black/White Card](#)

Harald 3 Designed by Raf Simons and Fanny Aronsen

Please see description on [Black/White Card](#)

Raas Designed by Doshi Levien

Please see description on [Black/White Card](#)

Re-wool Designed by Margrethe Odgaard

Please see description on [Black/White Card](#)

San Designed by Louise Sigvardt

Please see description on [Black/White Card](#)

Twill Weave Designed by Jonathan Olivares

Please see description on [Black/White Card](#)

Divina Melange 3 Designed by Finn Sködt

Application Offices, hotels, institutions, domestic use.

Description 100% new wool. Width app. 59 inches (150 cm). Weight app. 840 g/lin.m. Piece dyed. Colour differences may occur.

Abrasion: App. 45,000 rubs acc. to the Martindale method EN ISO 12947.

Lightfastness (ISO) 5-7. Pilling (EN ISO) 3. Fastness to rubbing (ISO) dry 4-5, wet 4. Sound absorption (EN ISO 354) 0.60/Class C (flat), 0.70/Class C (waved).

Airflow 678 Pa s/m. **Flame resistance:** AS/NZS 1530.3. BS 5852 Crib 5. BS 5852 ignition source 3. BS 5852 Part 1. BS 5867 Part 2 Type B. EN 1021-1/2. EN 13501, C-s1, d0. IMO FTP Code 2010:Part 8. NF D 60 013. NFPA 260. SN 198 898 5.3 with treatment. UNI 9175 11M. US Cal. Bull. 117-2013. ÖNORM B1 / Q1. (Copy of test report available).

Care Please see www.kvadrat.dk/care-and-maintenance.

Merit by Maharam Designed by Maharam Design Studio

Application Offices, hotels, institutions, domestic use. Great durability.

Description 76% post-consumer recycled polyester, 24% polyester. Stain resistant (PFOA free). Width app. 54 inches (137 cm). Weight app. 500 g/lin.m. Yarn dyed. Colour differences may occur.

Abrasion: App. 85,000 rubs acc. to the Martindale method EN ISO 12947. App. 100,000 double rubs acc. to Wyzenbeek method. **Lightfastness (ISO) 6-7. Pilling (EN ISO) 4. Fastness to rubbing (ISO) dry 4-5, wet 4-5. Flame resistance:** BS 476 part 7 + 6 with treatment. BS 5852 Crib 5 with treatment. BS 5852 part 1 with treatment. EN 1021-1/2. US Cal. Bull. 117-2013. (Copy of test report available).

Care Please see www.kvadrat.dk/care-and-maintenance.

Skye Designed by Georgina Wright

Application Offices, hotels, institutions, domestic use. Great durability.

Description 90% new wool, worsted, 10% nylon. Width app. 55 inches (140 cm). Weight app. 580 g/lin.m. Yarn dyed. Colour differences may occur.

Abrasion: App. 100,000 rubs acc. to the Martindale method EN ISO 12947.

Lightfastness (ISO) 6. Pilling (EN ISO) 4. Fastness to rubbing (ISO) dry 4-5, wet 4-5. Flame resistance: AS/NZS 3837 Class 2. BS 5852 Crib 5 with treatment. BS 5852 part 1. EN 1021-1/2. IMO FTP Code 2010:Part 8. NF D 60 013. SN 198 898 5.3 with treatment. UNI 9175 11M. US Cal. Bull. 117-2013. (Copy of test report available).

Care Please see www.kvadrat.dk/care-and-maintenance.

Fuse Designed by Raf Simons

Please see description on [Black/White Card](#)

Hero Designed by Patricia Urquiola

Please see description on [Black/White Card](#)

Remix 2 Designed by Giulio Ridolfo

Please see description on [Black/White Card](#)

Safire Designed by Sahco

Please see description on [Black/White Card](#)

Steelcut Trio 3 Designed by Frans Dijkmeijer and Giulio Ridolfo

Please see description on [Black/White Card](#)

Vidar 3 Designed by Raf Simons and Fanny Aronsen

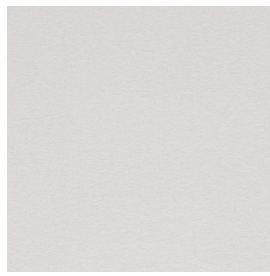
Please see description on [Black/White Card](#)

Hero Cat. B
Remix 2 Cat. B
Re-wool Cat. B





Hero Col. 191



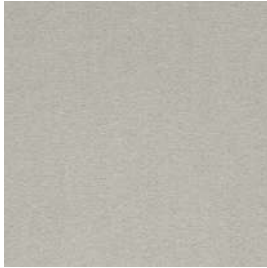
Hero Col. 101



Hero Col. 181



Hero Col. 151



Hero Col. 211



Hero Col. 991



Remix 2 Col. 173



Remix 2 Col. 163



Remix 2 Col. 143



Re-wool Col. 628



Re-wool Col. 108



Re-wool Col. 218



Re-wool Col. 128

Canvas 2 Designed by Giulio Ridolfo

Application Offices, hotels, institutions, domestic use. Great durability.
Description 90% new wool, worsted, 10% nylon. Width app. 55 inches (140 cm). Weight app. 480 g/lin.m. Material dyed. Colour differences may occur.
Abrasion: App. 100,000 rubs acc. to the Martindale method EN ISO 12947.
Lightfastness (ISO) 5-7. Pilling (EN ISO) 4. Fastness to rubbing (ISO) dry 4-5, wet 4. Sound absorption (EN ISO 354) 0.60/Class C (flat), 0.80/Class B (waved).
Airflow 849 Pa s/m. **Flame resistance:** AS/NZS 1530.3. BS 5852 Crib 5 with treatment. BS 5852 ignition source 3. BS 5852 Part 1. EN 1021-1/2. IMO FTP Code 2010:Part 8. NF D 60 013. NFPA 260. SN 198 898 5.3 with treatment. UNI 9175 11M. US Cal. Bull. 117-2013. ÖNORM B1 / Q1. (Copy of test report available).
Care Please see www.kvadrat.dk/care-and-maintenance.

Harald 3 Designed by Raf Simons and Fanny Aronsen

Application Upholstery for both domestic and contract use.
Description 100% cotton. Width app. 55 inches (140 cm). Weight app. 520 g/lin.m. Piece dyed. Colour differences may occur.
Abrasion: App. 100,000 rubs acc. to the Martindale method EN ISO 12947.
Lightfastness (ISO) 5-6. Pilling (EN ISO) 4-5. Fastness to rubbing (ISO) dry 4-5, wet 3-5. Sound absorption (EN ISO 354) 0.50/Class D (flat), 0.65/Class C (waved). **Airflow** 2809 Pa s/m. **Flame resistance:** AS/NZS 1530.3. AS/NZS 3837 Class 1. EN 1021-1. (Copy of test report available).
Care Please see www.kvadrat.dk/care-and-maintenance.

Raas Designed by Doshi Levien

Application Offices, hotels, institutions, domestic use. Great durability.
Description 92% new wool, worsted, 8% nylon. Width app. 56 inches (142 cm). Weight app. 770 g/lin.m. Yarn dyed. Colour differences may occur.
Abrasion: App. 100,000 rubs acc. to the Martindale method EN ISO 12947.
Lightfastness (ISO) 6-7. Pilling (EN ISO) 4-5. Fastness to rubbing (ISO) dry 4-5, wet 4-5. Flame resistance: BS 5852 Crib 5 with treatment. BS 5852 ignition source 3. BS 5852 part 1. EN 1021-1/2. IMO FTP Code 2010:Part 8. NF D 60 013. UNI 9175 11M. US Cal. Bull. 117-2013. (Copy of test report available).
Care Please see www.kvadrat.dk/care-and-maintenance.

Re-wool Designed by Margrethe Odgaard

Application Offices, hotels, institutions, domestic use. Great durability.
Description 45% recycled wool, 45% new wool, worsted, 10% nylon. Width app. 55 inches (140 cm). Weight app. 540 g/lin.m. Yarn dyed. Colour differences will occur.
Abrasion: App. 50,000 rubs acc. to the Martindale method EN ISO 12947.
Lightfastness (ISO) 5-7. Pilling (EN ISO) 4. Fastness to rubbing (ISO) dry 4-5, wet 4-5. Sound absorption (EN ISO 354) 0.50/Class D (flat), 0.75/Class C (waved). **Airflow** 258 Pa s/m. **Flame resistance:** AS/NZS 1530.3. BS 5852 Crib 5 with treatment. BS 5852 ignition source 3. BS 5852 part 1. EN 1021-1/2. IMO FTP Code 2010:Part 8. NF D 60 013. SN 198 898 5.3 with treatment. UNI 9175 11M. US Cal. Bull. 117-2013. ÖNORM B1 / Q1. (Copy of test report available).
Care Please see www.kvadrat.dk/care-and-maintenance.

San Designed by Louise Sigvardt

Application Offices, hotels, institutions, domestic use. Great durability.
Description 92% new wool, worsted, 8% nylon. Width app. 55 inches (140 cm). Weight app. 370 g/lin.m. Yarn dyed. Foreign fibres may occur in light colours. Colour differences may occur.
Abrasion: App. 60,000 rubs acc. to the Martindale method EN ISO 12947.
Lightfastness (ISO) 5-7. Pilling (EN ISO) 3-4. Fastness to rubbing (ISO) dry 4-5, wet 3-5. Flame resistance: BS 5852 Crib 5 with treatment. BS 5852 part 1. EN 1021-1/2. IMO FTP Code 2010:Part 8. NF D 60 013. UNI 9175 11M. US Cal. Bull. 117-2013. (Copy of test report available).
Care Please see www.kvadrat.dk/care-and-maintenance.

Steelcut Trio 3 Designed by Frans Dijkmeijer and Giulio Ridolfo

Application Offices, hotels, institutions, domestic use. Great durability.
Description 90% new wool, worsted, 10% nylon. Width app. 55 inches (140 cm). Weight app. 770 g/lin.m. Yarn dyed. Colour differences may occur.
Abrasion: App. 100,000 rubs acc. to the Martindale method EN ISO 12947.
Lightfastness (ISO) 5-7. Pilling (EN ISO) 4. Fastness to rubbing (ISO) dry 4-5, wet 3-5. Sound absorption (EN ISO 354) 0.70/Class C (flat), 0.95/Class A (waved). **Airflow** 910 Pa s/m. **Flame resistance:** AS/NZS 1530.3. AS/NZS 3837 Class 2. BS 5852 Crib 5 with treatment. BS 5852 ignition source 3. BS 5852 part 1. EN 1021-1/2. IMO FTP Code 2010:Part 8. NF D 60 013. NFPA 260. SN 198 898 5.3 with treatment. UNI 9175 11M. US Cal. Bull. 117-2013. ÖNORM B1 / Q1. (Copy of test report available).
Care Please see www.kvadrat.dk/care-and-maintenance.

Vidar 3 Designed by Raf Simons and Fanny Aronsen

Application Offices, hotels, institutions, domestic use. Great durability.
Description 94% new wool. 6% nylon. Width app. 55 inches (140 cm). Weight app. 765 g/lin.m. Yarn dyed. Foreign fibres may occur in light colours. Colour differences may occur.
Abrasion: App. 100,000 rubs acc. to the Martindale method EN ISO 12947.
Lightfastness (ISO) 5-7. Pilling (EN ISO) 4. Fastness to rubbing (ISO) dry 4-5, wet 3-5. Flame resistance: AS/NZS 3837 Class 2. BS 5852 Crib 5 with treatment. BS 5852 Part 1. DIN 4102 B2. EN 1021-1/2. GB 50222 B1 with treatment. IMO FTP Code 2010:Part 8. NF D 60 013. NFPA 260. UNI 9175 11M. US Cal. Bull. 117-2013. (Copy of test report available).
Care Please see www.kvadrat.dk/care-and-maintenance.

Fuse Designed by Raf Simons

Application Offices, hotels, institutions, domestic use. Great durability.
Description 65% new wool, worsted, 23% cotton, 8% viscose, 4% nylon. Width app. 56 inches (143 cm). Weight app. 810 g/lin.m. Length striped. Foreign fibres may occur in light colours. Yarn dyed. Colour differences may occur.
Abrasion: App. 100,000 rubs acc. to the Martindale method EN ISO 12947.
Lightfastness (ISO) 5-7. Pilling (EN ISO) 3-4. Fastness to rubbing (ISO) dry 4-5, wet 3-5. Flame resistance: BS 5852 Crib 5. BS 5852 Part 1. DIN 4102 B2. EN 1021-1/2. IMO FTP Code 2010:Part 8. NF D 60 013. UNI 9175 11M. US Cal. Bull. 117-2013. ÖNORM B1 / Q1. (Copy of test report available).
Care Please see www.kvadrat.dk/care-and-maintenance.

Hero Designed by Patricia Urquiola

Application Offices, hotels, institutions, domestic use.
Description 96% new wool, 4% nylon. Width app. 55 inches (140 cm). Weight app. 580 g/lin.m. Foreign fibres may occur in light colours. Piece dyed. Colour differences may occur.
Abrasion: App. 45,000 rubs acc. to the Martindale method EN ISO 12947.
Lightfastness (ISO) 5-7. Pilling (EN ISO) 3-4. Fastness to rubbing (ISO) dry 4-5, wet 4-5. Sound absorption (EN ISO 354) 0.55/Class D (flat), 0.75/Class C (waved). **Airflow** 410 Pa s/m. **Flame resistance:** AS/NZS 3837 Class 2. BS 5852 Crib 5 with treatment. BS 5852 part 1. DIN 4102 B2. EN 1021-1/2. IMO FTP Code 2010:Part 8. NF D 60 013. NFPA 260. SN 198 898 5.3 with treatment. UNI 9175 11M. US Cal. Bull. 117-2013. (Copy of test report available).
Care Please see www.kvadrat.dk/care-and-maintenance.

Remix 2 Designed by Giulio Ridolfo

Application Offices, hotels, institutions, domestic use. Great durability.
Description 90% new wool, worsted, 10% nylon. Width app. 54 inches (138 cm). Weight app. 415 g/lin.m. Material dyed. Colour differences may occur.
Abrasion: App. 100,000 rubs acc. to the Martindale method EN ISO 12947.
Lightfastness (ISO) 5-7. Pilling (EN ISO) 4. Fastness to rubbing (ISO) dry 4-5, wet 4. Sound absorption (EN ISO 354) 0.55/Class D (flat), 0.80/Class B (waved). **Airflow** 465 Pa s/m. **Flame resistance:** AS/NZS 1530.3. AS/NZS 3837 Class 2. BS 5852 Crib 5 with treatment. BS 5852 ignition source 3. BS 5852 part 1. EN 1021-1/2. IMO FTP Code 2010:Part 8. NF D 60 013. NFPA 260. SN 198 898 5.3 with treatment. UNI 9175 11M. US Cal. Bull. 117-2013. ÖNORM B1 / Q1. (Copy of test report available).
Care Please see www.kvadrat.dk/care-and-maintenance.

Safire Designed by Sahco

Application Offices, hotels, institutions, domestic use.
Description 43% viscose, 17% polyacrylic, 15% new wool, 9% cotton, 8% linen, 8% polyester. Width app. 55 inches (140 cm). Weight app. 1010 g/lin.m. Yarn dyed. Colour differences may occur.
Abrasion: App. 40,000 rubs acc. to the Martindale method EN ISO 12947.
Lightfastness (ISO) 5-6. Pilling (EN ISO) 3. Fastness to rubbing (ISO) dry 4, wet 3-4. Flame resistance: BS 5852 Crib 5 with treatment. BS 5852 ignition source 3. BS 5852 part 1. EN 1021-1/2. (Copy of test report available).
Care Please see www.kvadrat.dk/care-and-maintenance.

Steelcut 2 Designed by Frans Dijkmeijer and Giulio Ridolfo

Application Offices, hotels, institutions, domestic use. Great durability.
Description 90% new wool, worsted, 10% nylon. Width app. 55 inches (140 cm). Weight app. 825 g/lin.m. Piece dyed. Foreign fibres may occur in light colours. Colour differences may occur.
Abrasion: App. 80,000 rubs acc. to the Martindale method EN ISO 12947.
Lightfastness (ISO) 5-7. Pilling (EN ISO) 3-4. Fastness to rubbing (ISO) dry 4-5, wet 4. Sound absorption (EN ISO 354) 0.65/Class C (flat), 0.80/Class B (waved). **Airflow** 1014 Pa s/m. **Flame resistance:** AS/NZS 1530.3. AS/NZS 3837 Class 2. BS 5852 Crib 5 with treatment. BS 5852 part 1. EN 1021-1/2. IMO FTP Code 2010:Part 8. NF D 60 013. NFPA 260. SN 198 898 5.3 with treatment. UNI 9175 11M. US Cal. Bull. 117-2013. ÖNORM B1 / Q1. (Copy of test report available).
Care Please see www.kvadrat.dk/care-and-maintenance.

Twill Weave Designed by Jonathan Olivares

Application Offices, hotels, institutions, domestic use. Great durability.
Description 90% new wool, worsted, 10% nylon. Width app. 55 inches (140 cm). Weight app. 960 g/lin.m. Yarn dyed. Colour differences may occur.
Abrasion: App. 60,000 rubs acc. to the Martindale method EN ISO 12947.
Lightfastness (ISO) 5-7. Pilling (EN ISO) 3-4. Fastness to rubbing (ISO) dry 4-5, wet 4-5. Sound absorption (EN ISO 354) 0.70/Class C (flat), 1.00/Class A (waved). **Airflow** 1430 Pa s/m. **Flame resistance:** AS/NZS 1530.3. AS/NZS 3837 Class 3. BS 5852 Crib 5 with treatment. BS 5852 ignition source 3. BS 5852 Part 1. EN 1021-1/2. IMO FTP Code 2010:Part 8. NF D 60 013. SN 198 898 5.3 with treatment. UNI 9175 11M. US Cal. Bull. 117-2013. (Copy of test report available).
Care Please see www.kvadrat.dk/care-and-maintenance.



STEYR



STEYR

SCHEDA TECNICA/ TEST CERTIFICATE

Composizione/Composition:	100% PL TREVIRA CS
Altezza/Width:	140cm UNI EN 1773
Peso/Weight:	g/m ² (± 4 %) 320 UNI 5114

Variazioni dimensionali ai lavaggi/Dimensional stability

DRY-CLEANING	EN ISO 3175	1% weft /warp
MACHINE WASHING	EN ISO 6330	1% weft /warp
SHRINKAGE IN WARP AND WEFT		

Solidità del Colore/Colour fastness

Solidità colori alla Luce (Xenotest)-Light	5	ISO 105 B02
--------------------------------------------	---	-------------

Caratteristiche fisico-meccaniche/Technical characteristics

Resistenza del tessuto al pilling- Brush Test	UNI-EN 12945/2	4
Resistenza del tessuto all'abrasione- Martindale	EN ISO 5470-2	45.000

Reazione al Fuoco/Reaction on fire

CLASS 1 IM
BS5852 PART 1/2N
UNI EN 1021 PART 1/2 - B2

B08
001

B08
002

B08
003

B08
004

B08
005

B08
006

B08
007

B08
008

B08
009



B08
010

B08
011

B08
012

B08
013

B08
014

B08
015

B08
016

B08
017

B08
018



Gebrüder Thonet Vienna GmbH (GTV)
Prinz Eugen Straße 42
1040 Wien, (Austria)
Offices of the trademarks' licensee
Production Furniture International S.p.A
Via Foggia, 23/H - 10152 Torino Italy

www.gebruederthonetvienna.com