

TABULARASA - C
ARTEMIS - C
FR SPARKS - C
ADAMO & EVA - C



DEDAR
MILANO



TABULARASA - 134 MAGNOLIA



TABULARASA - 172 FANGO



ARTEMIS - 012 IVORY



FR - SPARKS - 002 TAUPE



TABULARASA - 153 PERLA



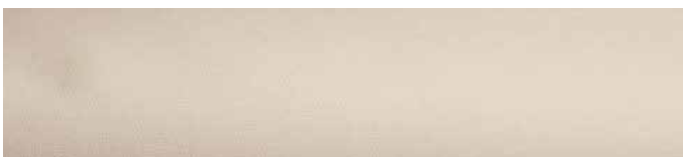
FR - SPARKS - 003 PERLA



ADAMO & EVA - 104 INDIGO



TABULARASA - 139 NOIR







TABULARASA - 173 ROSE



ARTEMIS - 026 BLACK



ADAMO & EVA - 138 NERO

Article code	Name	Width	Repeat	Composition	Martindale	Tecnical characteristics and cleanability
ADAMO	Adamo & Eva	140 cm 55.12"	-	100%CO	50000	
TABULA	Tabularasa	140 cm 55.12"	-	100%CO	30000	
T15013	Artemis	135 cm 53.15"	-	42%PES 29%PA 12%CV 11%CO 6%PAN	40000	
T17054	Fr Sparcks	140 CM 55.12"	-	100%PES TREVIRA CS	40000	

ADAMO & EVA - C
TABULARASA - C
ARTEMIS - C



DEDAR
MILANO



ADAMO & EVA - 130 SABBIA



TABULARASA - 143 BRONZE



TABULARASA - 127 ROC



ARTEMIS - 030 BRONZO



TABULARASA - 138 SOURIS



TABULARASA - 174 DORATO

Article code	Name	Width	Repeat	Composition	Martindale	Tecnical characteristics and cleanability
ADAMO	Adamo & Eva	140 cm 55.12"	-	100%CO	50000	
TABULA	Tabularasa	140 cm 55.12"	-	100%CO	30000	
T15013	Artemis	135 cm 53.15"	-	42%PES 29%PA 12%CV 11%CO 6%PAN	40000	

ADAMO & EVA - C
TABULARASA - C
PROUST - C
ARTEMIS - C
FR SPARKS - C



DEDAR
MILANO



ADAMO & EVA - 159 MERINGA



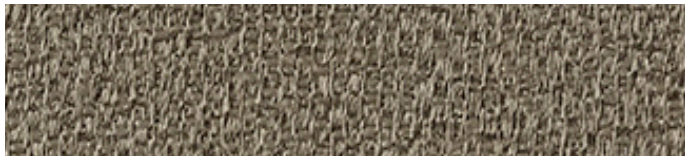
ADAMO & EVA - 109 ANICE



TABULARASA - 135 NACRE



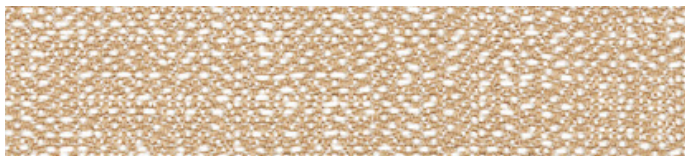
PROUST - 010 ACQUA



ARTEMIS - 024 DUNA



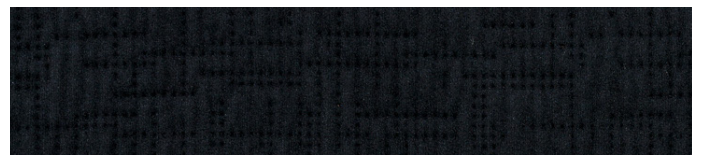
ADAMO & EVA - 140 LAGO



FK SPARKS - 006 DUNA



ATREMIS - 029 RAFIA

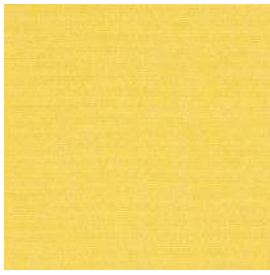


PROUST - 003 BLACK

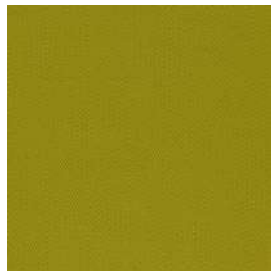
Article code	Name	Width	Repeat	Composition	Martindale	Tecnical characteristics and cleanability
ADAMO	Adamo & Eva	140 cm 55.12"	-	100%CO	50000	
TABULA	Tabularasa	140 cm 55.12"	-	100%CO	30000	
T15013	Artemis	135 cm 53.15"	-	42%PES 29%PA 12%CV 11%CO 6%PAN	40000	
T17054	Fr Sparks	140 cm 55.12"	-	100% PES TREVIRA CS	40000	
T17018	Proust	140 cm 55.12"	↓ 14,5 cm - 5.7" ↔ 15.5 cm - 6.1"	100%PES	40000	

Canvas 2 Cat. C
Divina 3 Cat. C
Divina Melange 3 Cat. C
Harald 3 Cat. C
Raas Cat. C
Safire Cat. C
San Cat. C
Skye Cat. C
Steelcut 2 Cat. C
Steelcut Trio 3 Cat. C
Twill Weave Cat. C
Vidar 3 Cat. C

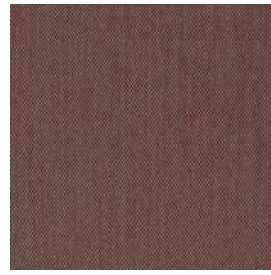




San Col. 430



Steelcut 2 Col. 435



Steelcut Trio 3 Col. 645



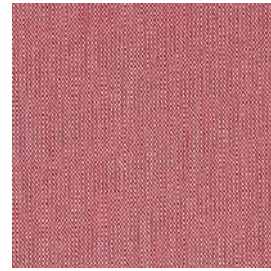
Steelcut Trio 3 Col. 686



Divina Melange 3 Col. 427



Harald 3 Col. 443



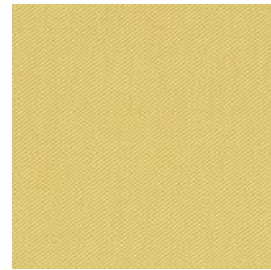
Steelcut Trio 3 Col. 636



San Col. 580



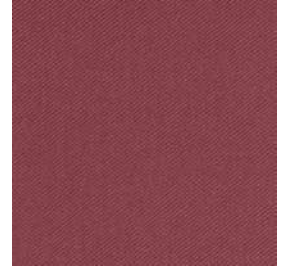
Safire Col. 016



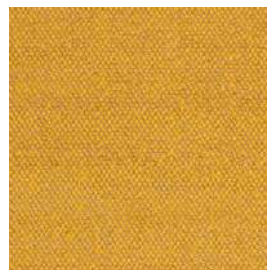
Twill Weave Col. 430



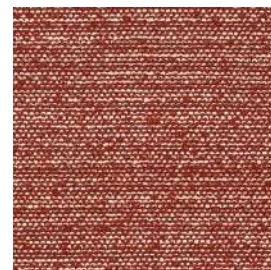
Skye Col. 581



Twill Weave Col. 570



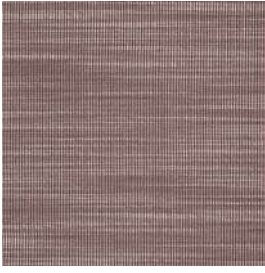
Safire Col. 017



Safire Col. 013



Vidar 3 Col. 582



Raas Col. 642



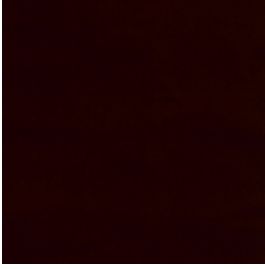
Canvas 2 Col. 614



San Col. 350



San Col. 540



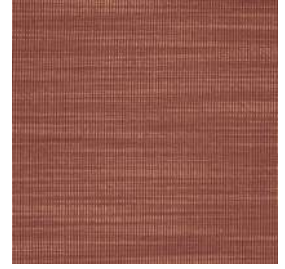
Harald 3 Col. 582



Twill Weave Col. 530



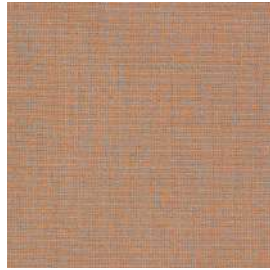
Divina 3 Col. 552



Raas Col. 552



Vidar 3 Col. 693



Skye Col. 551



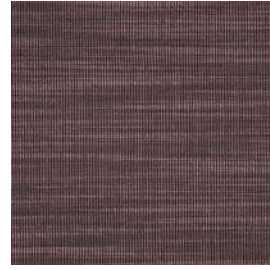
Twill Weave Col. 550



Harald 3 Col. 512



San Col. 630



Raas Col. 662



Twill Weave Col. 280

Coda 2 Designed by Norway Says & Per Bjørnsen

Application Offices, hotels, institutions, domestic use. Great durability.
Description 90% new wool, 10% nylon. Width app. 55 inches (140 cm). Weight app. 860 g/lin.m. Foreign fibres may occur in light colours. Material dyed. Colour differences may occur.

Abrasion: App. 100,000 rubs acc. to the Martindale method EN ISO 12947.
Lightfastness (ISO) 5-7. Pilling (EN ISO) 4. Fastness to rubbing (ISO) dry 4-5, wet 4. Airflow 200 Pa s/m. Flame resistance: AS/NZS 3837. BS 5852 Crib 5 with treatment. BS 5852 part 1. EN 1021-1/2. IMO FTP Code 2010:Part 8. NF D 60 013. NFPA 260. SN 198 898 5.3 with treatment. UNI 9175 11M. US Cal. Bull. 117-2013. (Copy of test report available).

Care Please see www.kvadrat.dk/care-and-maintenance.

Divina Melange 3 Designed by Finn Sködt

Application Offices, hotels, institutions, domestic use.
Description 100% new wool. Width app. 59 inches (150 cm). Weight app. 840 g/lin.m. Piece dyed. Colour differences may occur.

Abrasion: App. 45,000 rubs acc. to the Martindale method EN ISO 12947.
Lightfastness (ISO) 5-7. Pilling (EN ISO) 3. Fastness to rubbing (ISO) dry 4-5, wet 4. Sound absorption (EN ISO 354) 0.60/Class C (flat), 0.70/Class C (waved). Airflow 678 Pa s/m. Flame resistance: AS/NZS 1530.3. BS 5852 Crib 5. BS 5852 ignition source 3. BS 5852 Part 1. BS 5867 Part 2 Type B. EN 1021-1/2. EN 13501, C-s1, d0. IMO FTP Code 2010:Part 8. NF D 60 013. NFPA 260. SN 198 898 5.3 with treatment. UNI 9175 11M. US Cal. Bull. 117-2013. ÖNORM B1 / Q1. (Copy of test report available).

Care Please see www.kvadrat.dk/care-and-maintenance.

Noise Designed by Raf Simons

Application Offices, hotels, institutions, domestic use. Great durability.
Description 96% new wool, worsted. 4% nylon. Width app. 55 inches (140 cm). Weight app. 715 g/lin.m. Yarn dyed. Colour differences may occur.
Abrasion: App. 30,000 rubs acc. to the Martindale method EN ISO 12947.
Lightfastness (ISO) 6-7. Pilling (EN ISO) 4. Fastness to rubbing (ISO) dry 4-5, wet 4-5. Flame resistance: BS 5852 Crib 5 with treatment. BS 5852 part 1. DIN 4102 B2. EN 1021-1/2. IMO FTP Code 2010:Part 8. NF D 60 013. UNI 9175 11M. US Cal. Bull. 117-2013. (Copy of test report available).

Care Please see www.kvadrat.dk/care-and-maintenance.

Ria Designed by Raf Simons

Application Offices, hotels, institutions, domestic use. Great durability.
Description 84% new wool, worsted. 12% viscose. 4% nylon. Width app. 55 inches (140 cm). Weight app. 980 g/lin.m. Yarn dyed. Colour differences may occur.
Abrasion: App. 50,000 rubs acc. to the Martindale method EN ISO 12947.
Lightfastness (ISO) 7. Pilling (EN ISO) 4. Fastness to rubbing (ISO) dry 3-5, wet 3-5. Flame resistance: BS 5852 Crib 5 with treatment. BS 5852 part 1. EN 1021-1/2. IMO FTP Code 2010:Part 8. NF D 60 013. UNI 9175 11M. US Cal. Bull. 117-2013. (Copy of test report available).

Care Please see www.kvadrat.dk/care-and-maintenance.

Canvas 2 Designed by Giulio Ridolfo

Please see description on [Black/White Card](#)

Harald 3 Designed by Raf Simons and Fanny Aronsen

Please see description on [Black/White Card](#)

Raas Designed by Doshi Levien

Please see description on [Black/White Card](#)

Safire Designed by Sahco

Please see description on [Black/White Card](#)

Steelcut 2 Designed by Frans Dijkmeijer and Giulio Ridolfo

Please see description on [Black/White Card](#)

Twill Weave Designed by Jonathan Olivares

Please see description on [Black/White Card](#)

Divina 3 Designed by Finn Sködt

Application Offices, hotels, institutions, domestic use.
Description 100% new wool. Width app. 59 inches (150 cm). Weight app. 840 g/lin.m. Piece dyed. Foreign fibres may occur in light colours. Colour differences may occur.

Abrasion: App. 45,000 rubs acc. to the Martindale method EN ISO 12947.
Lightfastness (ISO) 5-7. Pilling (EN ISO) 3. Fastness to rubbing (ISO) dry 4-5, wet 4. Sound absorption (EN ISO 354) 0.60/Class C (flat), 0.70/Class C (waved). Airflow 678 Pa s/m. Flame resistance: AS/NZS 1530.3. BS 5852 Crib 5. BS 5852 Part 1. BS 5867 Part 2 Type B. EN 1021-1/2. EN 13501, C-s1, d0. IMO FTP Code 2010:Part 8. NF D 60 013. NFPA 260. UNI 9175 11M. US Cal. Bull. 117-2013. ÖNORM B1 / Q1. (Copy of test report available).

Care Please see www.kvadrat.dk/care-and-maintenance.

Merit by Maharam Designed by Maharam Design Studio

Application Offices, hotels, institutions, domestic use. Great durability.
Description 76% post-consumer recycled polyester, 24% polyester. Stain resistant (PFOA free). Width app. 54 inches (137 cm). Weight app. 500 g/lin.m. Yarn dyed. Colour differences may occur.
Abrasion: App. 85,000 rubs acc. to the Martindale method EN ISO 12947. App. 100,000 double rubs acc. to Wyzenbeek method. **Lightfastness (ISO) 6-7. Pilling (EN ISO) 4. Fastness to rubbing (ISO) dry 4-5, wet 4-5. Flame resistance:** BS 476 part 7 + 6 with treatment. BS 5852 Crib 5 with treatment. BS 5852 part 1 with treatment. EN 1021-1/2. US Cal. Bull. 117-2013. (Copy of test report available).

Care Please see www.kvadrat.dk/care-and-maintenance.

Pilot Designed by Raf Simons

Application Offices, hotels, institutions, domestic use. Great durability.
Description 82% new wool, worsted. 10% polyester. 8% nylon. Width 55 inches (140 cm). Weight app. 770 g/lin.m. Yarn dyed. Colour differences may occur.
Abrasion: App. 70,000 rubs acc. to the Martindale method EN ISO 12947.
Lightfastness (ISO) 7. Pilling (EN ISO) 4. Fastness to rubbing (ISO) dry 4-5, wet 3-5. Flame resistance: BS 5852 Crib 5 with treatment. BS 5852 part 1. DIN 4102 B2. EN 1021-1/2. IMO FTP Code 2010:Part 8. UNI 9175 11M. US Cal. Bull. 117-2013. ÖNORM B1 / Q1. (Copy of test report available).

Care Please see www.kvadrat.dk/care-and-maintenance.

Skye Designed by Georgina Wright

Application Offices, hotels, institutions, domestic use. Great durability.
Description 90% new wool, worsted, 10% nylon. Width app. 55 inches (140 cm). Weight app. 580 g/lin.m. Yarn dyed. Colour differences may occur.
Abrasion: App. 100,000 rubs acc. to the Martindale method EN ISO 12947.
Lightfastness (ISO) 6. Pilling (EN ISO) 4. Fastness to rubbing (ISO) dry 4-5, wet 4-5. Flame resistance: AS/NZS 3837 Class 2. BS 5852 Crib 5 with treatment. BS 5852 part 1. EN 1021-1/2. IMO FTP Code 2010:Part 8. NF D 60 013. SN 198 898 5.3 with treatment. UNI 9175 11M. US Cal. Bull. 117-2013. (Copy of test report available).

Care Please see www.kvadrat.dk/care-and-maintenance.

Fuse Designed by Raf Simons

Please see description on [Black/White Card](#)

Hero Designed by Patricia Urquiola

Please see description on [Black/White Card](#)

Re-wool Designed by Margrethe Odgaard

Please see description on [Black/White Card](#)

San Designed by Louise Sigvardt

Please see description on [Black/White Card](#)

Steelcut Trio 3 Designed by Frans Dijkmeijer and Giulio Ridolfo

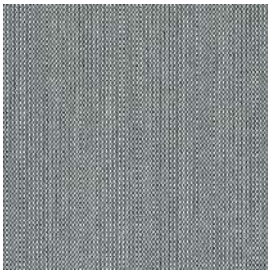
Please see description on [Black/White Card](#)

Vidar 3 Designed by Raf Simons and Fanny Aronsen

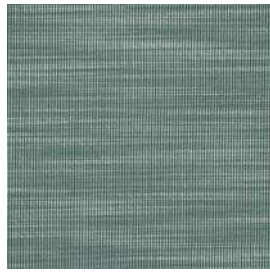
Please see description on [Black/White Card](#)

Canvas 2 Cat. C
Divina MD Cat. C
Divina Melange 3 Cat. C
Hallingdal 65 Cat. C
Harald 3 Cat. C
Raas Cat. C
Safire Cat. C
San Cat. C
Skye Cat. C
Steelcut Trio 3 Cat. C
Twill Weave Cat. C
Vidar 3 Cat. C





Steelcut Trio 3 Col. 916



Raas Col. 942



Twill Weave Col. 960



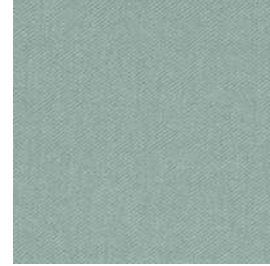
Safire Col. 006



Divina Melange 3 Col. 977



Raas Col. 982



Twill Weave Col. 940



Safire Col. 011



Divina Melange 3 Col. 967



Twill Weave Col. 990



Harald 3 Col. 823



Twill Weave Col. 780



Skye Col. 941



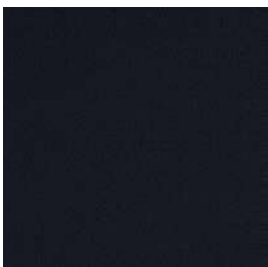
Harald 3 Col. 982



San Col. 790



Remix 2 Col. 762



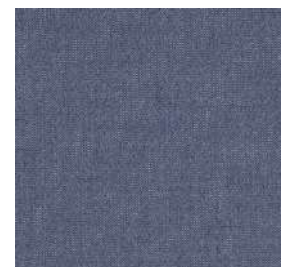
Vidar 3 Col. 554



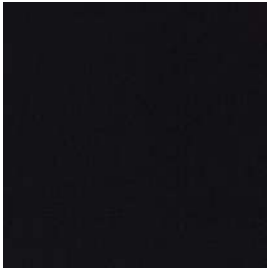
Steelcut Trio 3 Col. 113



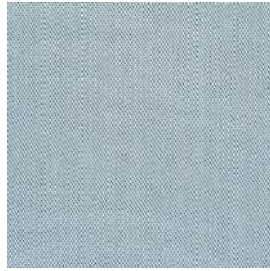
Hallingdal 65 Col. 723



San Col. 780



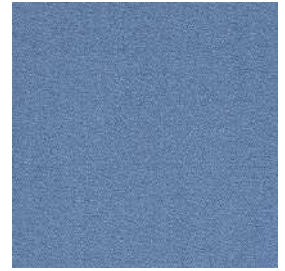
Steelcut Trio 3 Col. 195



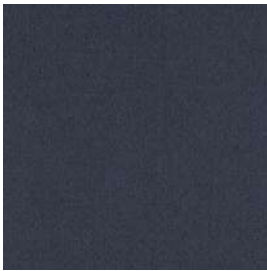
Steelcut Trio 3 Col. 713



Canvas 2 Col. 734



Vidar 3 Col. 733



San Col. 190



Remix 2 Col. 733



Re-wool Col. 758



Divina MD Col. 873



Safire Col. 012



San Col. 750

Divina MD Designed by Finn Sködt

Application Offices, hotels, institutions, domestic use.

Description 100% new wool. Width app. 59 inches (150 cm). Weight app. 840 g/lin.m. Material dyed. Colour differences will occur.

Abrasion: App. 45,000 rubs acc. to the Martindale method EN ISO 12947.

Lightfastness (ISO) 5-6. Pilling (EN ISO) 3. Fastness to rubbing (ISO) dry 4-5, wet 4. Sound absorption (EN ISO 354) 0.60/Class C (flat), 0.70/Class C (waved).

Airflow 678 Pa s/m. **Flame resistance:** AS/NZS 1530.3. BS 5852 Crib 5. BS 5852 Part 1. EN 1021-1/2. EN 13501, C-s1, d0. IMO FTP Code 2010:Part 8. NF D 60 013. NFPA 260. SN 198 898 5.3 with treatment. UNI 9175 11M. US Cal. Bull. 117-2013. ÖNORM B1 / Q1. (Copy of test report available).

Care Please see www.kvadrat.dk/care-and-maintenance.

Hallingdal 65 Designed by Nanna Ditzel

Application Offices, hotels, institutions, domestic use. Great durability.

Description 70% new wool, 30% viscose. Width 51 inches (130 cm). Weight app. 795 g/lin.m. Material dyed. Foreign fibre may occur in light colours. Colour differences may occur.

Abrasion: App. 100,000 rubs acc. to the Martindale method EN ISO 12947.

Lightfastness (ISO) 5-7. Pilling (EN ISO) 3-4. Fastness to rubbing (ISO) dry 4-5, wet 3-5. Sound absorption (EN ISO 354) 0.45/Class D (flat), 0.70/Class C (waved). Airflow 210 Pa s/m. **Flame resistance:** AS/NZS 1530.3. AS/NZS 3837. BS 5852 Crib 5. BS 5852 part 1. EN 1021-1/2. GB 50222 B1 with treatment. IMO FTP Code 2010:Part 8. NF D 60 013. NFPA 260. SN 198 898 5.3 with treatment. UNI 9175 11M. US Cal. Bull. 117-2013. ÖNORM B1 / Q1. (Copy of test report available).

Care Please see www.kvadrat.dk/care-and-maintenance.

Pilot Designed by Raf Simons

Application Offices, hotels, institutions, domestic use. Great wearability.

Description 82% new wool, worsted. 10% polyester. 8% nylon. Width 55 inches (140 cm). Weight app. 770 g/lin.m. Yarn dyed. Colour differences may occur.

Abrasion: App. 70,000 rubs acc. to the Martindale method EN ISO 12947.

Lightfastness (ISO) 7. Pilling (EN ISO) 4. Fastness to rubbing (ISO) dry 4-5, wet 3-5. Flame resistance: BS 5852 Crib 5 with treatment. BS 5852 part 1. DIN 4102 B2. EN 1021-1/2. IMO FTP Code 2010:Part 8. UNI 9175 11M. US Cal. Bull. 117-2013. ÖNORM B1 / Q1. (Copy of test report available).

Care Please see www.kvadrat.dk/care-and-maintenance.

Canvas 2 Designed by Giulio Ridolfo

Please see description on [Black/White Card](#)

Harald 3 Designed by Raf Simons and Fanny Aronsen

Please see description on [Black/White Card](#)

Raas Designed by Doshi Levien

Please see description on [Black/White Card](#)

Re-wool Designed by Margrethe Odgaard

Please see description on [Black/White Card](#)

San Designed by Louise Sigvardt

Please see description on [Black/White Card](#)

Twill Weave Designed by Jonathan Olivares

Please see description on [Black/White Card](#)

Divina Melange 3 Designed by Finn Sködt

Application Offices, hotels, institutions, domestic use.

Description 100% new wool. Width app. 59 inches (150 cm). Weight app. 840 g/lin.m. Piece dyed. Colour differences may occur.

Abrasion: App. 45,000 rubs acc. to the Martindale method EN ISO 12947.

Lightfastness (ISO) 5-7. Pilling (EN ISO) 3. Fastness to rubbing (ISO) dry 4-5, wet 4. Sound absorption (EN ISO 354) 0.60/Class C (flat), 0.70/Class C (waved).

Airflow 678 Pa s/m. **Flame resistance:** AS/NZS 1530.3. BS 5852 Crib 5. BS 5852 ignition source 3. BS 5852 Part 1. BS 5867 Part 2 Type B. EN 1021-1/2. EN 13501, C-s1, d0. IMO FTP Code 2010:Part 8. NF D 60 013. NFPA 260. SN 198 898 5.3 with treatment. UNI 9175 11M. US Cal. Bull. 117-2013. ÖNORM B1 / Q1. (Copy of test report available).

Care Please see www.kvadrat.dk/care-and-maintenance.

Merit by Maharam Designed by Maharam Design Studio

Application Offices, hotels, institutions, domestic use. Great durability.

Description 76% post-consumer recycled polyester, 24% polyester. Stain resistant (PFOA free). Width app. 54 inches (137 cm). Weight app. 500 g/lin.m. Yarn dyed. Colour differences may occur.

Abrasion: App. 85,000 rubs acc. to the Martindale method EN ISO 12947. App. 100,000 double rubs acc. to Wyzenbeek method. **Lightfastness (ISO) 6-7. Pilling (EN ISO) 4. Fastness to rubbing (ISO) dry 4-5, wet 4-5. Flame resistance:** BS 476 part 7 + 6 with treatment. BS 5852 Crib 5 with treatment. BS 5852 part 1 with treatment. EN 1021-1/2. US Cal. Bull. 117-2013. (Copy of test report available).

Care Please see www.kvadrat.dk/care-and-maintenance.

Skye Designed by Georgina Wright

Application Offices, hotels, institutions, domestic use. Great durability.

Description 90% new wool, worsted, 10% nylon. Width app. 55 inches (140 cm). Weight app. 580 g/lin.m. Yarn dyed. Colour differences may occur.

Abrasion: App. 100,000 rubs acc. to the Martindale method EN ISO 12947.

Lightfastness (ISO) 6. Pilling (EN ISO) 4. Fastness to rubbing (ISO) dry 4-5, wet 4-5. Flame resistance: AS/NZS 3837 Class 2. BS 5852 Crib 5 with treatment. BS 5852 part 1. EN 1021-1/2. IMO FTP Code 2010:Part 8. NF D 60 013. SN 198 898 5.3 with treatment. UNI 9175 11M. US Cal. Bull. 117-2013. (Copy of test report available).

Care Please see www.kvadrat.dk/care-and-maintenance.

Fuse Designed by Raf Simons

Please see description on [Black/White Card](#)

Hero Designed by Patricia Urquiola

Please see description on [Black/White Card](#)

Remix 2 Designed by Giulio Ridolfo

Please see description on [Black/White Card](#)

Safire Designed by Sahco

Please see description on [Black/White Card](#)

Steelcut Trio 3 Designed by Frans Dijkmeijer and Giulio Ridolfo

Please see description on [Black/White Card](#)

Vidar 3 Designed by Raf Simons and Fanny Aronsen

Please see description on [Black/White Card](#)

Canvas 2 Cat. C
Harald 3 Cat. C
Raas Cat. C
Safire Cat. C
San Cat. C
Steelcut 2 Cat. C
Steelcut Trio 3 Cat. C
Twill Weave Cat. C
Vidar 3 Cat. C



kvadrat





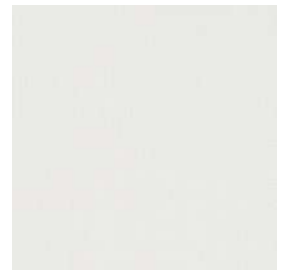
Hero Col. 191



Steelcut 2 Col. 120



Twill Weave Col. 190



Twill Weave Col. 110



Harald 3 Col. 283



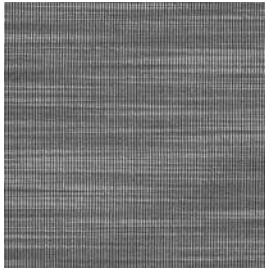
Harald 3 Col. 133



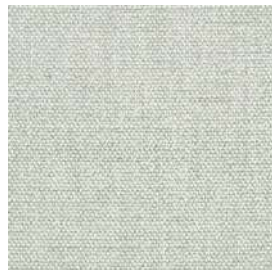
Raas Col. 182



San Col. 150



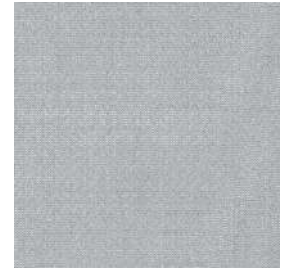
Raas Col. 142



Safire Col. 008



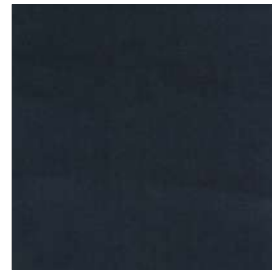
Vidar 3 Col. 182



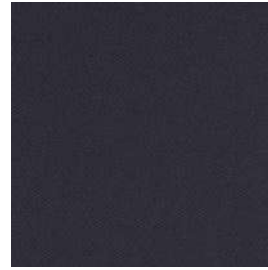
San Col. 130



Steelcut 2 Col. 180



Harald 3 Col. 182



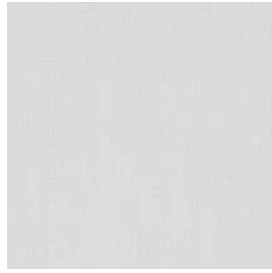
Twill Weave Col. 790



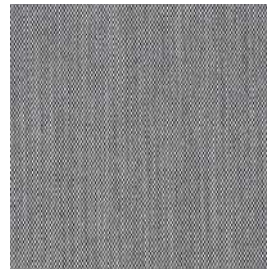
Vidar 3 Col. 1880



Canvas 2 Col. 114



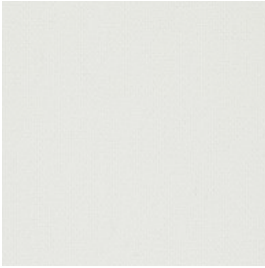
Twill Weave Col. 120



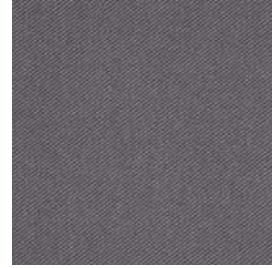
Steelcut Trio 3 Col. 124



Raas Col. 462



Steelcut 2 Col. 110



Twill Weave Col. 160



Harald 3 Col. 242



Twill Weave Col. 230



Raas Col. 112



Canvas 2 Col. 124



San Col. 230



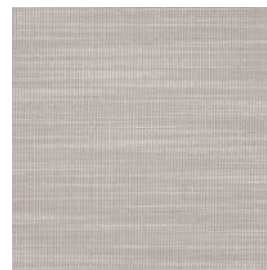
Vidar 3 Col. 323



Steelcut 2 Col. 220



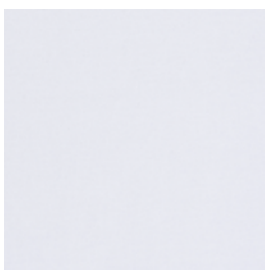
Vidar 3 Col. 222



Raas Col. 122



Vidar 3 Col. 333



Harald 3 Col. 123

Canvas 2 Designed by Giulio Ridolfo

Application Offices, hotels, institutions, domestic use. Great durability.
Description 90% new wool, worsted, 10% nylon. Width app. 55 inches (140 cm). Weight app. 480 g/lin.m. Material dyed. Colour differences may occur.
Abrasion: App. 100,000 rubs acc. to the Martindale method EN ISO 12947.
Lightfastness (ISO) 5-7. Pilling (EN ISO) 4. Fastness to rubbing (ISO) dry 4-5, wet 4. Sound absorption (EN ISO 354) 0.60/Class C (flat), 0.80/Class B (waved).
Airflow 849 Pa s/m. **Flame resistance:** AS/NZS 1530.3. BS 5852 Crib 5 with treatment. BS 5852 ignition source 3. BS 5852 Part 1. EN 1021-1/2. IMO FTP Code 2010:Part 8. NF D 60 013. NFPA 260. SN 198 898 5.3 with treatment. UNI 9175 11M. US Cal. Bull. 117-2013. ÖNORM B1 / Q1. (Copy of test report available).
Care Please see www.kvadrat.dk/care-and-maintenance.

Harald 3 Designed by Raf Simons and Fanny Aronsen

Application Upholstery for both domestic and contract use.
Description 100% cotton. Width app. 55 inches (140 cm). Weight app. 520 g/lin.m. Piece dyed. Colour differences may occur.
Abrasion: App. 100,000 rubs acc. to the Martindale method EN ISO 12947.
Lightfastness (ISO) 5-6. Pilling (EN ISO) 4-5. Fastness to rubbing (ISO) dry 4-5, wet 3-5. Sound absorption (EN ISO 354) 0.50/Class D (flat), 0.65/Class C (waved). **Airflow** 2809 Pa s/m. **Flame resistance:** AS/NZS 1530.3. AS/NZS 3837 Class 1. EN 1021-1. (Copy of test report available).
Care Please see www.kvadrat.dk/care-and-maintenance.

Raas Designed by Doshi Levien

Application Offices, hotels, institutions, domestic use. Great durability.
Description 92% new wool, worsted, 8% nylon. Width app. 56 inches (142 cm). Weight app. 770 g/lin.m. Yarn dyed. Colour differences may occur.
Abrasion: App. 100,000 rubs acc. to the Martindale method EN ISO 12947.
Lightfastness (ISO) 6-7. Pilling (EN ISO) 4-5. Fastness to rubbing (ISO) dry 4-5, wet 4-5. Flame resistance: BS 5852 Crib 5 with treatment. BS 5852 ignition source 3. BS 5852 part 1. EN 1021-1/2. IMO FTP Code 2010:Part 8. NF D 60 013. UNI 9175 11M. US Cal. Bull. 117-2013. (Copy of test report available).
Care Please see www.kvadrat.dk/care-and-maintenance.

Re-wool Designed by Margrethe Odgaard

Application Offices, hotels, institutions, domestic use. Great durability.
Description 45% recycled wool, 45% new wool, worsted, 10% nylon. Width app. 55 inches (140 cm). Weight app. 540 g/lin.m. Yarn dyed. Colour differences will occur.
Abrasion: App. 50,000 rubs acc. to the Martindale method EN ISO 12947.
Lightfastness (ISO) 5-7. Pilling (EN ISO) 4. Fastness to rubbing (ISO) dry 4-5, wet 4-5. Sound absorption (EN ISO 354) 0.50/Class D (flat), 0.75/Class C (waved). **Airflow** 258 Pa s/m. **Flame resistance:** AS/NZS 1530.3. BS 5852 Crib 5 with treatment. BS 5852 ignition source 3. BS 5852 part 1. EN 1021-1/2. IMO FTP Code 2010:Part 8. NF D 60 013. SN 198 898 5.3 with treatment. UNI 9175 11M. US Cal. Bull. 117-2013. ÖNORM B1 / Q1. (Copy of test report available).
Care Please see www.kvadrat.dk/care-and-maintenance.

San Designed by Louise Sigvardt

Application Offices, hotels, institutions, domestic use. Great durability.
Description 92% new wool, worsted, 8% nylon. Width app. 55 inches (140 cm). Weight app. 370 g/lin.m. Yarn dyed. Foreign fibres may occur in light colours. Colour differences may occur.
Abrasion: App. 60,000 rubs acc. to the Martindale method EN ISO 12947.
Lightfastness (ISO) 5-7. Pilling (EN ISO) 3-4. Fastness to rubbing (ISO) dry 4-5, wet 3-5. Flame resistance: BS 5852 Crib 5 with treatment. BS 5852 part 1. EN 1021-1/2. IMO FTP Code 2010:Part 8. NF D 60 013. UNI 9175 11M. US Cal. Bull. 117-2013. (Copy of test report available).
Care Please see www.kvadrat.dk/care-and-maintenance.

Steelcut Trio 3 Designed by Frans Dijkmeijer and Giulio Ridolfo

Application Offices, hotels, institutions, domestic use. Great durability.
Description 90% new wool, worsted, 10% nylon. Width app. 55 inches (140 cm). Weight app. 770 g/lin.m. Yarn dyed. Colour differences may occur.
Abrasion: App. 100,000 rubs acc. to the Martindale method EN ISO 12947.
Lightfastness (ISO) 5-7. Pilling (EN ISO) 4. Fastness to rubbing (ISO) dry 4-5, wet 3-5. Sound absorption (EN ISO 354) 0.70/Class C (flat), 0.95/Class A (waved). **Airflow** 910 Pa s/m. **Flame resistance:** AS/NZS 1530.3. AS/NZS 3837 Class 2. BS 5852 Crib 5 with treatment. BS 5852 ignition source 3. BS 5852 part 1. EN 1021-1/2. IMO FTP Code 2010:Part 8. NF D 60 013. NFPA 260. SN 198 898 5.3 with treatment. UNI 9175 11M. US Cal. Bull. 117-2013. ÖNORM B1 / Q1. (Copy of test report available).
Care Please see www.kvadrat.dk/care-and-maintenance.

Vidar 3 Designed by Raf Simons and Fanny Aronsen

Application Offices, hotels, institutions, domestic use. Great durability.
Description 94% new wool. 6% nylon. Width app. 55 inches (140 cm). Weight app. 765 g/lin.m. Yarn dyed. Foreign fibres may occur in light colours. Colour differences may occur.
Abrasion: App. 100,000 rubs acc. to the Martindale method EN ISO 12947.
Lightfastness (ISO) 5-7. Pilling (EN ISO) 4. Fastness to rubbing (ISO) dry 4-5, wet 3-5. Flame resistance: AS/NZS 3837 Class 2. BS 5852 Crib 5 with treatment. BS 5852 Part 1. DIN 4102 B2. EN 1021-1/2. GB 50222 B1 with treatment. IMO FTP Code 2010:Part 8. NF D 60 013. NFPA 260. UNI 9175 11M. US Cal. Bull. 117-2013. (Copy of test report available).
Care Please see www.kvadrat.dk/care-and-maintenance.

Fuse Designed by Raf Simons

Application Offices, hotels, institutions, domestic use. Great durability.
Description 65% new wool, worsted, 23% cotton, 8% viscose, 4% nylon. Width app. 56 inches (143 cm). Weight app. 810 g/lin.m. Length striped. Foreign fibres may occur in light colours. Yarn dyed. Colour differences may occur.
Abrasion: App. 100,000 rubs acc. to the Martindale method EN ISO 12947.
Lightfastness (ISO) 5-7. Pilling (EN ISO) 3-4. Fastness to rubbing (ISO) dry 4-5, wet 3-5. Flame resistance: BS 5852 Crib 5. BS 5852 Part 1. DIN 4102 B2. EN 1021-1/2. IMO FTP Code 2010:Part 8. NF D 60 013. UNI 9175 11M. US Cal. Bull. 117-2013. ÖNORM B1 / Q1. (Copy of test report available).
Care Please see www.kvadrat.dk/care-and-maintenance.

Hero Designed by Patricia Urquiola

Application Offices, hotels, institutions, domestic use.
Description 96% new wool, 4% nylon. Width app. 55 inches (140 cm). Weight app. 580 g/lin.m. Foreign fibres may occur in light colours. Piece dyed. Colour differences may occur.
Abrasion: App. 45,000 rubs acc. to the Martindale method EN ISO 12947.
Lightfastness (ISO) 5-7. Pilling (EN ISO) 3-4. Fastness to rubbing (ISO) dry 4-5, wet 4-5. Sound absorption (EN ISO 354) 0.55/Class D (flat), 0.75/Class C (waved). **Airflow** 410 Pa s/m. **Flame resistance:** AS/NZS 3837 Class 2. BS 5852 Crib 5 with treatment. BS 5852 part 1. DIN 4102 B2. EN 1021-1/2. IMO FTP Code 2010:Part 8. NF D 60 013. NFPA 260. SN 198 898 5.3 with treatment. UNI 9175 11M. US Cal. Bull. 117-2013. (Copy of test report available).
Care Please see www.kvadrat.dk/care-and-maintenance.

Remix 2 Designed by Giulio Ridolfo

Application Offices, hotels, institutions, domestic use. Great durability.
Description 90% new wool, worsted, 10% nylon. Width app. 54 inches (138 cm). Weight app. 415 g/lin.m. Material dyed. Colour differences may occur.
Abrasion: App. 100,000 rubs acc. to the Martindale method EN ISO 12947.
Lightfastness (ISO) 5-7. Pilling (EN ISO) 4. Fastness to rubbing (ISO) dry 4-5, wet 4. Sound absorption (EN ISO 354) 0.55/Class D (flat), 0.80/Class B (waved). **Airflow** 465 Pa s/m. **Flame resistance:** AS/NZS 1530.3. AS/NZS 3837 Class 2. BS 5852 Crib 5 with treatment. BS 5852 ignition source 3. BS 5852 part 1. EN 1021-1/2. IMO FTP Code 2010:Part 8. NF D 60 013. NFPA 260. SN 198 898 5.3 with treatment. UNI 9175 11M. US Cal. Bull. 117-2013. ÖNORM B1 / Q1. (Copy of test report available).
Care Please see www.kvadrat.dk/care-and-maintenance.

Safire Designed by Sahco

Application Offices, hotels, institutions, domestic use.
Description 43% viscose, 17% polyacrylic, 15% new wool, 9% cotton, 8% linen, 8% polyester. Width app. 55 inches (140 cm). Weight app. 1010 g/lin.m. Yarn dyed. Colour differences may occur.
Abrasion: App. 40,000 rubs acc. to the Martindale method EN ISO 12947.
Lightfastness (ISO) 5-6. Pilling (EN ISO) 3. Fastness to rubbing (ISO) dry 4, wet 3-4. Flame resistance: BS 5852 Crib 5 with treatment. BS 5852 ignition source 3. BS 5852 part 1. EN 1021-1/2. (Copy of test report available).
Care Please see www.kvadrat.dk/care-and-maintenance.

Steelcut 2 Designed by Frans Dijkmeijer and Giulio Ridolfo

Application Offices, hotels, institutions, domestic use. Great durability.
Description 90% new wool, worsted, 10% nylon. Width app. 55 inches (140 cm). Weight app. 825 g/lin.m. Piece dyed. Foreign fibres may occur in light colours. Colour differences may occur.
Abrasion: App. 80,000 rubs acc. to the Martindale method EN ISO 12947.
Lightfastness (ISO) 5-7. Pilling (EN ISO) 3-4. Fastness to rubbing (ISO) dry 4-5, wet 4. Sound absorption (EN ISO 354) 0.65/Class C (flat), 0.80/Class B (waved). **Airflow** 1014 Pa s/m. **Flame resistance:** AS/NZS 1530.3. AS/NZS 3837 Class 2. BS 5852 Crib 5 with treatment. BS 5852 part 1. EN 1021-1/2. IMO FTP Code 2010:Part 8. NF D 60 013. NFPA 260. SN 198 898 5.3 with treatment. UNI 9175 11M. US Cal. Bull. 117-2013. ÖNORM B1 / Q1. (Copy of test report available).
Care Please see www.kvadrat.dk/care-and-maintenance.

Twill Weave Designed by Jonathan Olivares

Application Offices, hotels, institutions, domestic use. Great durability.
Description 90% new wool, worsted, 10% nylon. Width app. 55 inches (140 cm). Weight app. 960 g/lin.m. Yarn dyed. Colour differences may occur.
Abrasion: App. 60,000 rubs acc. to the Martindale method EN ISO 12947.
Lightfastness (ISO) 5-7. Pilling (EN ISO) 3-4. Fastness to rubbing (ISO) dry 4-5, wet 4-5. Sound absorption (EN ISO 354) 0.70/Class C (flat), 1.00/Class A (waved). **Airflow** 1430 Pa s/m. **Flame resistance:** AS/NZS 1530.3. AS/NZS 3837 Class 3. BS 5852 Crib 5 with treatment. BS 5852 ignition source 3. BS 5852 Part 1. EN 1021-1/2. IMO FTP Code 2010:Part 8. NF D 60 013. SN 198 898 5.3 with treatment. UNI 9175 11M. US Cal. Bull. 117-2013. (Copy of test report available).
Care Please see www.kvadrat.dk/care-and-maintenance.



L. P.



FOSCARI COL 4 AIRONE

CONNEMARA COL 9 ICE



CONNEMARA COL 1 DARK INDIGO



CONNEMARA COL 8 DARK ZEN



CONNEMARA COL 10 MALACHITE























CONNEMARA COL 16 CAMARGUE



CLIFDEN COL 14 MALACHITE



Codice articolo	Nome	Altezza	Peso	Composizione	Martindale	Caratteristiche tecniche e lavabilità
AL2006	CLIFFDEN	140 CM	602 GR/MTL	100%LI	19.000	    
AL2008	CONNEMARA	140 CM	1050 GR/MTL	100%LI	25.000	    
AL2009	DINGLE	140 CM	973 GR/MTL	100%LI	30.000	    
AC3019	FOSCARI	148 CM	365 GR/MTL	100%CO	20.000	    

Fabric

CLIFDEN
CONNEMARA
DINGLE
FOSCARI

Cat.

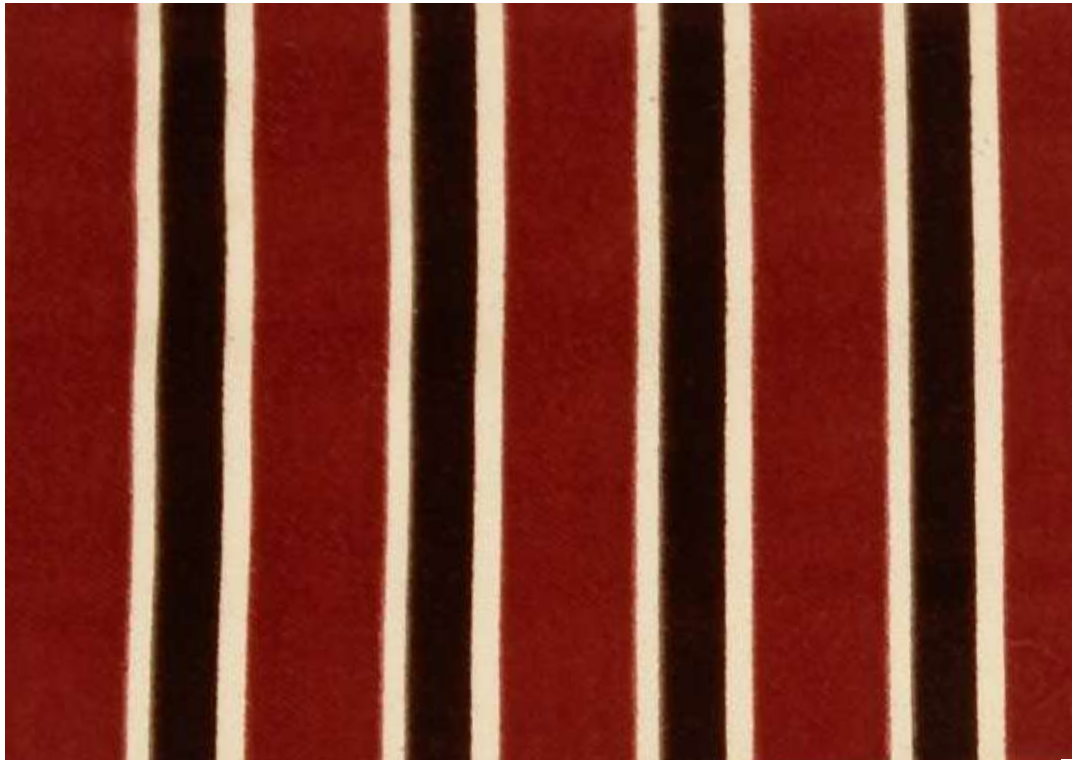
C
C
C
C

Gebrüder Thonet Vienna GmbH (GTV)
Prinz Eugen Straße 42
1040 Wien, (Austria)
Offices of the trademarks' licensee
Production Furniture International S.p.A
Via Foggia, 23/H - 10152 Torino Italy

www.gebruederthonetvienna.com



L. P.

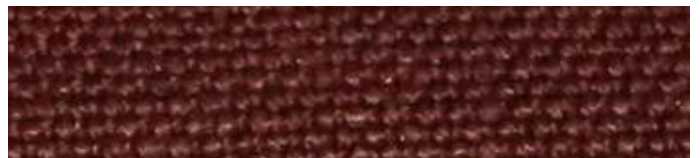


FOSCARI COL 1 PIMENT DOUX

DINGLE COL 2 ECRU



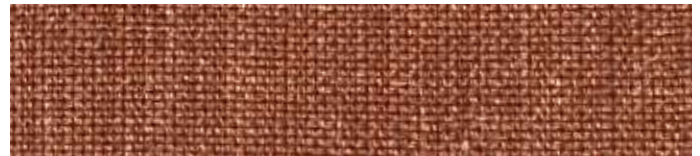
CONNEMARA COL 12 SASSICAIA























CONNEMARA COL 14 COWES



CLIFFDEN COL 8 COPPER



Codice articolo	Nome	Altezza	Peso	Composizione	Martindale	Caratteristiche tecniche e lavabilità
AL2006	CLIFFDEN	140 CM	602 GR/MTL	100%LI	19.000	    
AL2008	CONNEMARA	140 CM	1050 GR/MTL	100%LI	25.000	    
AL2009	DINGLE	140 CM	973 GR/MTL	100%LI	30.000	    
AC3019	FOSCARI	148 CM	365 GR/MTL	100%CO	20.000	    

Fabric	Cat.
CLIFDEN	C
CONNEMARA	C
DINGLE	C
FOSCARI	C

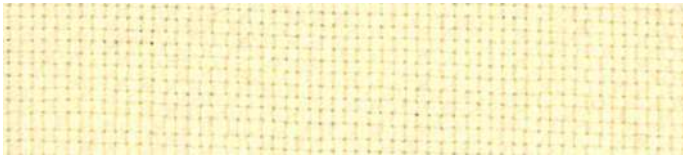
Gebrüder Thonet Vienna GmbH (GTV)
Prinz Eugen Straße 42
1040 Wien, (Austria)
Offices of the trademarks' licensee
Production Furniture International S.p.A
Via Foggia, 23/H - 10152 Torino Italy

www.gebruederthonetvienna.com



L. P.
Ignifughi / Fire retardant

D'ESTE COL 2 BIANCORE



D'ESTE COL 24 GREY DUNE



HALKIN PLAIN COL 1 KASHA



D'ESTE COL 17 ICE



D'ESTE COL 3 JUTA



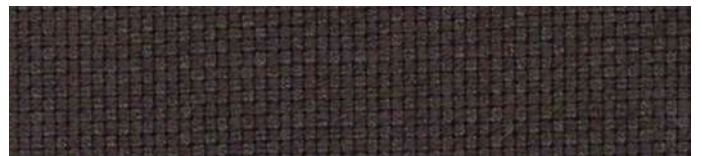
HALKIN PLAIN COL 3 GRAPHITE



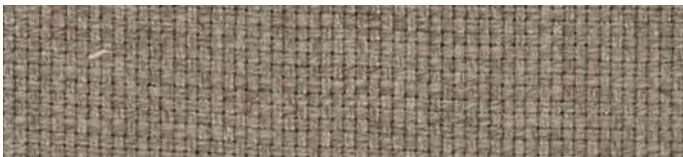
PENINSULA COL 2 ZEN



D'ESTE COL 22 GRAPHITE



D'ESTE COL 5 KASHA



PENINSULA COL 10 DARK GRAPHITE



HALKIN PLAIN COL 2 SITATUNGA



D'ESTE COL 23 EBANO



PENINSULA COL 6 CURRY



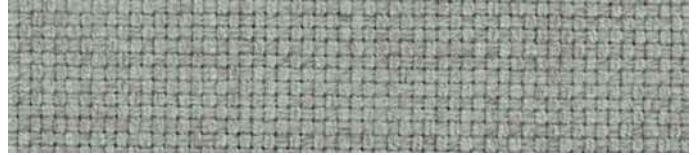
AMANKILA COL 9 POLVERE



D'ESTE COL 25 PIMENT DOUX



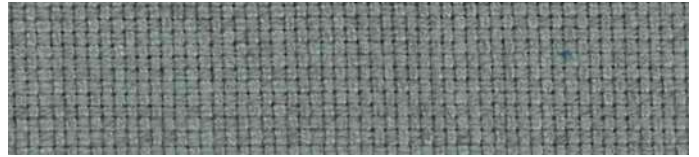
D'ESTE COL 18 MALACHITE



PENINSULA COL 5 PAPRIKA



D'ESTE COL 26 LOVAT



PENINSULA COL 4 CORALLO



D'ESTE COL 19 EUCALYPTUS



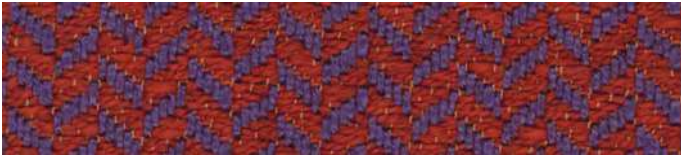
D'ESTE COL 12 COWES



D'ESTE COL 21 MIDNIGHT



AMANKILA COL 6 TANGERINE-MAUVE



PENINSULA COL 9 SERENATA



D'ESTE COL 15 AUBERGINE



D'ESTE COL 28 INDIGO



Categoria	Nome	Altezza	Peso	Composizione	Martindale	Caratteristiche tecniche e lavabilità				
C	AMANKILA	140 CM	880 GR/MTL	100% TREVIRA	40.000					
C	D'ESTE	145 CM	764 GR/MTL	100% PL TREVIRA	40.000					
C	HALKIN PLAIN	140 CM	540 GR/MTL	100% PL TREVIRA	30.000					
C	PENINSULA	140 CM	900 GR/MTL	100% PL TREVIRA	37.000					

Gebrüder Thonet Vienna GmbH (GTV)

Prinz Eugen Straße 42

1040 Wien, (Austria)

Offices of the trademarks' licensee

Production Furniture International S.p.A

Via Foggia, 23/H - 10152 Torino Italy

www.gebruederthonetvienna.com