

FUNKY STRIPES - D  
SPLENDIDO SPLENDEnte - D  
SPLENDIDO - D  
ABACUS - D  
FORGET ME NOT - D



**DEDAR**  
MILANO



FUNKY STRIPES - 001 OTTANIO



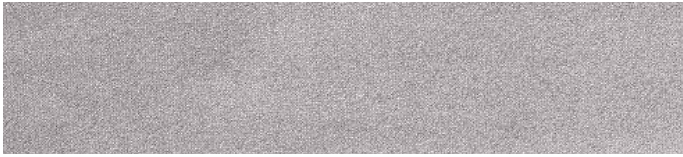
FUNKY STRIPES - 007 TAUPE



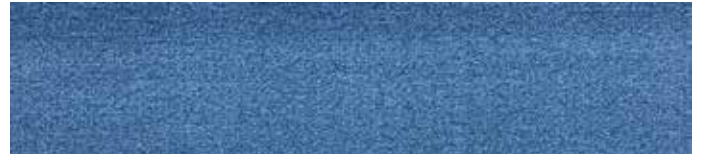
SPLENDIDO SPLENDETE - 002 PERLA MANINA ARGENTO



SPLENDIDO - 009 FANGO



SPLENDIDO - 014 SILVER



SPLENDIDO - 023 STORM BLUE



FORGER ME NOT - 005 BLANC D'IVOIRE



SPLENDIDO - 012 ROSE

Article code	Name	Width	Repeat	Composition	Martindale	Tecnical characteristics and cleanability
T14028	Funky Stripes	136 cm 53.54"	↓ 32 cm - 12.6" ↔ 23 cm - 9.06"	69%PES 20%SE 11%PAN	-	
T17017	Splendido Splendente	138 cm 54.33"	-	63%CV 26%CO 11%SE ( PILE 85%CV 15%SE )	50000	
T15029	Abacus	138 cm 54.33"	-	100% PES FR	32000	
T15016	Splendido	140 CM 55.12"	-	63%CV 26%CO 11%SE ( PILE 85%CV 15%SE )	50000	
T17012	Forget Me Not	130 51.18"	-	39%PES 26%CV 22%SE 13%PAN	-	

SPLENDIDO SPLENDEnte - D

ABACUS - D

SPLENDIDO - D

PATCHWORK - D

FORGET ME NOT - D

HIGHLIGHTS - D



**DEDAR**

MILANO



SPLENDIDO - 031 MALACHITE



ABACUS - 003 GOLD



SPLENDIDO - 014 SILVER



SPLENDIDO - 018 SAND



HIGHLIGHTS - 002 MADREPERLA



SPLENDIDO SPLENDEnte - 027 ALABASTRO LAMINA ARGENTO



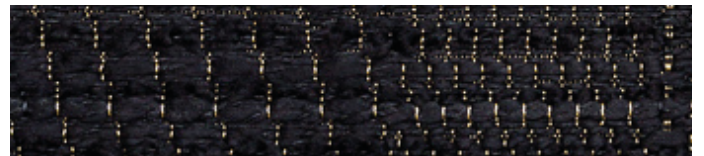
SPLENDIDO SPLENDEnte - 009 FANGO LAMINA ORO



SPLENDIDO - 015 SMOKE



SPLENDIDO - 005 BLACK



PATCHWORK - 006 BLACK



FORGET ME NOT - 001 NOIR LAQUE



SPLENDIDO SPLENDEnte - 030 SALVIA LAMINA ORO

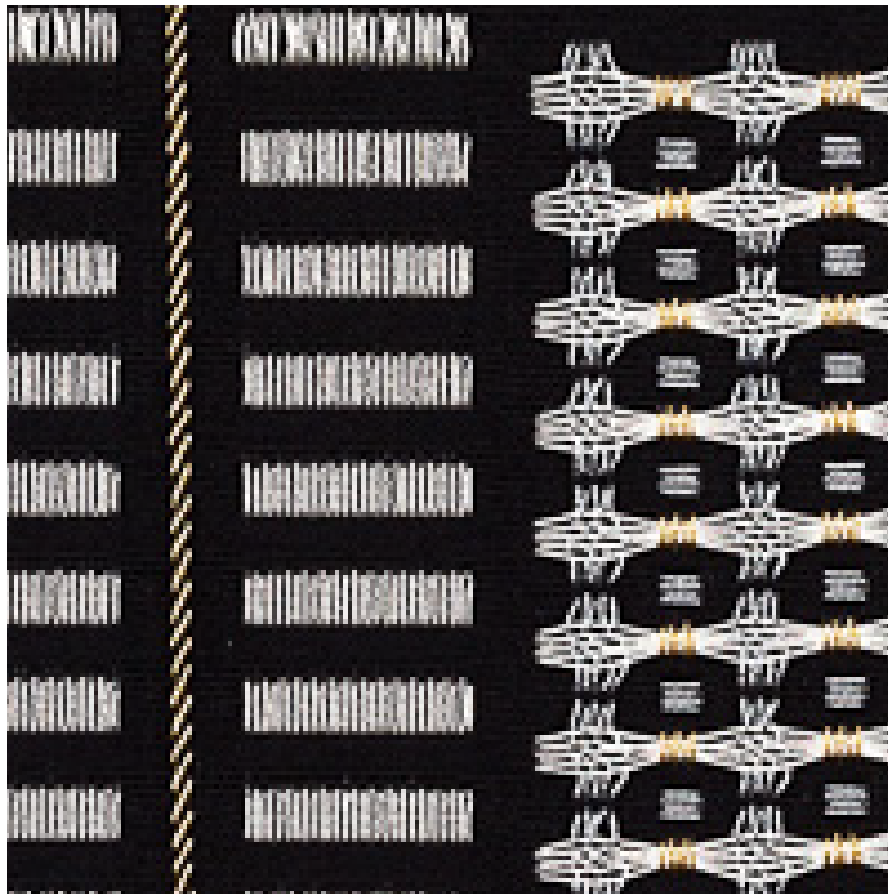
Codice articolo Article code	Nome Name	Altezza Width	Rapporto Repeat	Composizione Composition	Martindale Martindale	Caratteristiche tecniche e lavabilità Technical characteristics and cleanability
T17030	Manifesto Futurista	148 cm 58.26"	↓ 186 cm - 73.23 ↔ 147 cm - 57.87"	80%PES 20%CO	-	
T17017	Splendido Splendente	138 cm 54.33"	-	63%CV 26%CO 11%SE ( PILE 85%CV 15%SE )	50000	
T15029	Abacus	138 cm 54.33"	-	100% PES FR	32000	
T15016	Splendido	138 cm 55.12"	-	63%CV 26%CO 11%SE ( PILE 85%CV 15%SE )	50000	
T17013	Patchwork	140 cm 55.12"	-	60%PES FR TREVIRA 40%PES FR	-	
T17012	Forget Me Not	130 cm 51.18"	-	39%PES 26%CV 22%SE 13%PAN	-	
T14023	Highlights	140 cm 55.12"	-	70%PES FR 29%PES FR TREVIRA 1%MTF	20000	

TESSERE - D  
TESSERE METALLICO - D  
SPLENDIDO SPLENDEnte - D  
SPLENDIDO - D  
ABACUS - D

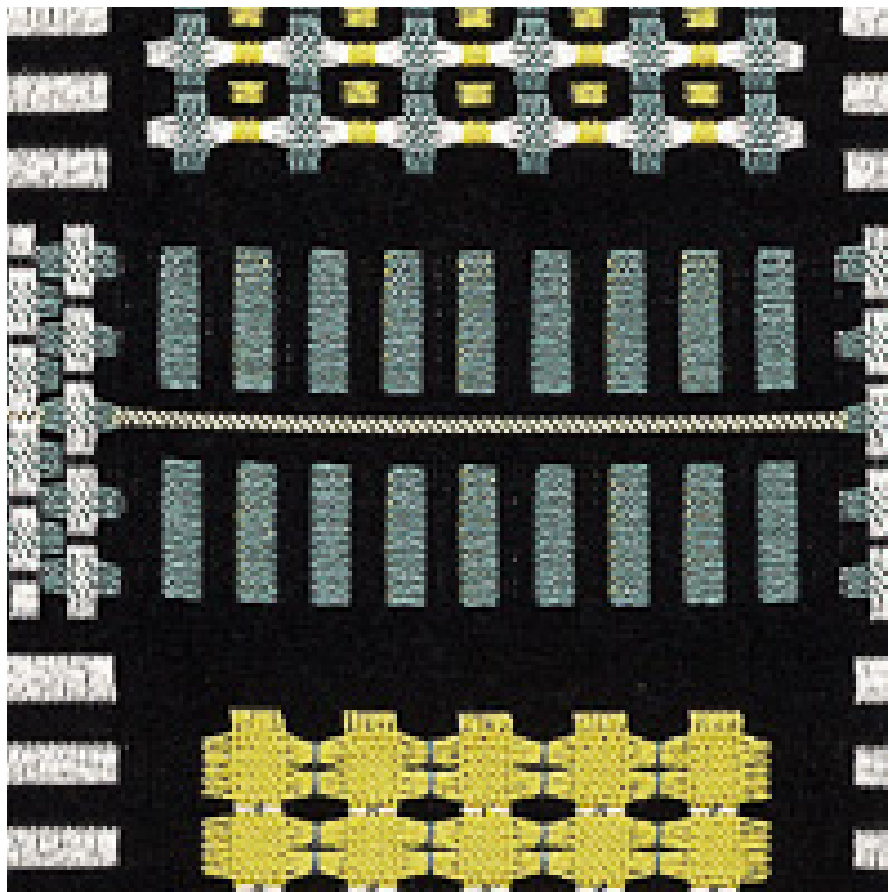


**DEDAR**  
MILANO

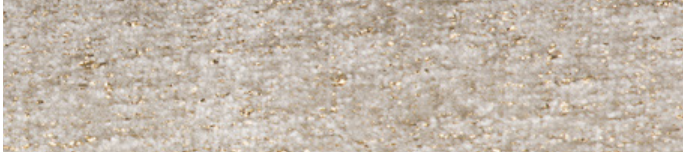




TESSERE METALLICO, COL. 004 BLACK GOLD



TESSERE, COL. 002 LEMON GREY



SPLENDIDO SPLENDETE - 007 WHITE LAMINA ORO



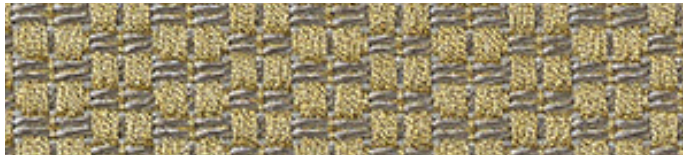
SPLENDIDO - 021 LAGO



SPLENDIDO - 002 PERLA



ABACUS - 002 BLACK



ABACUS - 003 GOLD



SPLENDIDO - 016 BEIGE

Article code	Name	Width	Repeat	Composition	Martindale	Tecnical characteristics and cleanability
T17017	Splendido Splendente	138 cm 54.33"	-	63%CV 26%CO 11%SE ( PILE 85%CV 15%SE )	50000	
T15029	Abacus	138 cm 54.33"	-	100% PES FR	32000	
T15016	Splendido	138 cm 55.12"	-	63%CV 26%CO 11%SE ( PILE 85%CV 15%SE )	50000	
T17025	Tessere	136 cm 53.54"	↓ 34 cm - 13.39" ↔ 34 cm - 13.39"	100%CO	-	
T14023	Tessere Metallico	146 cm 57.48"	↓ 34 cm - 13.39" ↔ 34 cm - 13.39"	60%PES 40%CO	-	

Coda 2 Cat. D  
Fuse Cat. D  
Noise Cat. D

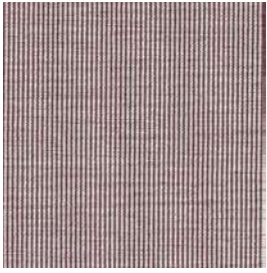




Coda 2 Col. 610



Noise Col. 662



Fuse Col. 631

### **Coda 2** Designed by Norway Says & Per Bjørnsen

**Application** Offices, hotels, institutions, domestic use. Great durability.  
**Description** 90% new wool, 10% nylon. Width app. 55 inches (140 cm). Weight app. 860 g/lin.m. Foreign fibres may occur in light colours. Material dyed. Colour differences may occur.  
**Abrasion:** App. 100,000 rubs acc. to the Martindale method EN ISO 12947.  
**Lightfastness (ISO) 5-7. Pilling (EN ISO) 4. Fastness to rubbing (ISO) dry 4-5, wet 4. Airflow 200 Pa s/m. Flame resistance:** AS/NZS 3837. BS 5852 Crib 5 with treatment. BS 5852 part 1. EN 1021-1/2. IMO FTP Code 2010:Part 8. NF D 60 013. NFPA 260. SN 198 898 5.3 with treatment. UNI 9175 11M. US Cal. Bull. 117-2013. (Copy of test report available).  
**Care** Please see [www.kvadrat.dk/care-and-maintenance](http://www.kvadrat.dk/care-and-maintenance).

### **Divina Melange 3** Designed by Finn Sködt

**Application** Offices, hotels, institutions, domestic use.  
**Description** 100% new wool. Width app. 59 inches (150 cm). Weight app. 840 g/lin.m. Piece dyed. Colour differences may occur.  
**Abrasion:** App. 45,000 rubs acc. to the Martindale method EN ISO 12947.  
**Lightfastness (ISO) 5-7. Pilling (EN ISO) 3. Fastness to rubbing (ISO) dry 4-5, wet 4. Sound absorption (EN ISO 354) 0.60/Class C (flat), 0.70/Class C (waved). Airflow 678 Pa s/m. Flame resistance:** AS/NZS 1530.3. BS 5852 Crib 5. BS 5852 ignition source 3. BS 5852 Part 1. BS 5867 Part 2 Type B. EN 1021-1/2. EN 13501, C-s1, d0. IMO FTP Code 2010:Part 8. NF D 60 013. NFPA 260. SN 198 898 5.3 with treatment. UNI 9175 11M. US Cal. Bull. 117-2013. ÖNORM B1 / Q1. (Copy of test report available).  
**Care** Please see [www.kvadrat.dk/care-and-maintenance](http://www.kvadrat.dk/care-and-maintenance).

### **Noise** Designed by Raf Simons

**Application** Offices, hotels, institutions, domestic use. Great durability.  
**Description** 96% new wool, worsted. 4% nylon. Width app. 55 inches (140 cm). Weight app. 715 g/lin.m. Yarn dyed. Colour differences may occur.  
**Abrasion:** App. 30,000 rubs acc. to the Martindale method EN ISO 12947.  
**Lightfastness (ISO) 6-7. Pilling (EN ISO) 4. Fastness to rubbing (ISO) dry 4-5, wet 4-5. Flame resistance:** BS 5852 Crib 5 with treatment. BS 5852 part 1. DIN 4102 B2. EN 1021-1/2. IMO FTP Code 2010:Part 8. NF D 60 013. UNI 9175 11M. US Cal. Bull. 117-2013. (Copy of test report available).  
**Care** Please see [www.kvadrat.dk/care-and-maintenance](http://www.kvadrat.dk/care-and-maintenance).

### **Ria** Designed by Raf Simons

**Application** Offices, hotels, institutions, domestic use. Great durability.  
**Description** 84% new wool, worsted. 12% viscose. 4% nylon. Width app. 55 inches (140 cm). Weight app. 980 g/lin.m. Yarn dyed. Colour differences may occur.  
**Abrasion:** App. 50,000 rubs acc. to the Martindale method EN ISO 12947.  
**Lightfastness (ISO) 7. Pilling (EN ISO) 4. Fastness to rubbing (ISO) dry 3-5, wet 3-5. Flame resistance:** BS 5852 Crib 5 with treatment. BS 5852 part 1. EN 1021-1/2. IMO FTP Code 2010:Part 8. NF D 60 013. UNI 9175 11M. US Cal. Bull. 117-2013. (Copy of test report available).  
**Care** Please see [www.kvadrat.dk/care-and-maintenance](http://www.kvadrat.dk/care-and-maintenance).

### **Canvas 2** Designed by Giulio Ridolfo

Please see description on Black/White Card

### **Harald 3** Designed by Raf Simons and Fanny Aronsen

Please see description on Black/White Card

### **Raas** Designed by Doshi Levien

Please see description on Black/White Card

### **Safire** Designed by Sahco

Please see description on Black/White Card

### **Steelcut 2** Designed by Frans Dijkmeijer and Giulio Ridolfo

Please see description on Black/White Card

### **Twill Weave** Designed by Jonathan Olivares

Please see description on Black/White Card

### **Divina 3** Designed by Finn Sködt

**Application** Offices, hotels, institutions, domestic use.  
**Description** 100% new wool. Width app. 59 inches (150 cm). Weight app. 840 g/lin.m. Piece dyed. Foreign fibres may occur in light colours. Colour differences may occur.  
**Abrasion:** App. 45,000 rubs acc. to the Martindale method EN ISO 12947.  
**Lightfastness (ISO) 5-7. Pilling (EN ISO) 3. Fastness to rubbing (ISO) dry 4-5, wet 4. Sound absorption (EN ISO 354) 0.60/Class C (flat), 0.70/Class C (waved). Airflow 678 Pa s/m. Flame resistance:** AS/NZS 1530.3. BS 5852 Crib 5. BS 5852 Part 1. BS 5867 Part 2 Type B. EN 1021-1/2. EN 13501, C-s1, d0. IMO FTP Code 2010:Part 8. NF D 60 013. NFPA 260. UNI 9175 11M. US Cal. Bull. 117-2013. ÖNORM B1 / Q1. (Copy of test report available).  
**Care** Please see [www.kvadrat.dk/care-and-maintenance](http://www.kvadrat.dk/care-and-maintenance).

### **Merit** by Maharam Designed by Maharam Design Studio

**Application** Offices, hotels, institutions, domestic use. Great durability.  
**Description** 76% post-consumer recycled polyester, 24% polyester. Stain resistant (PFOA free). Width app. 54 inches (137 cm). Weight app. 500 g/lin.m. Yarn dyed. Colour differences may occur.  
**Abrasion:** App. 85,000 rubs acc. to the Martindale method EN ISO 12947. App. 100,000 double rubs acc. to Wyzenbeek method. **Lightfastness (ISO) 6-7. Pilling (EN ISO) 4. Fastness to rubbing (ISO) dry 4-5, wet 4-5. Flame resistance:** BS 476 part 7 + 6 with treatment. BS 5852 Crib 5 with treatment. BS 5852 part 1 with treatment. EN 1021-1/2. US Cal. Bull. 117-2013. (Copy of test report available).  
**Care** Please see [www.kvadrat.dk/care-and-maintenance](http://www.kvadrat.dk/care-and-maintenance).

### **Pilot** Designed by Raf Simons

**Application** Offices, hotels, institutions, domestic use. Great durability.  
**Description** 82% new wool, worsted. 10% polyester. 8% nylon. Width 55 inches (140 cm). Weight app. 770 g/lin.m. Yarn dyed. Colour differences may occur.  
**Abrasion:** App. 70,000 rubs acc. to the Martindale method EN ISO 12947.  
**Lightfastness (ISO) 7. Pilling (EN ISO) 4. Fastness to rubbing (ISO) dry 4-5, wet 3-5. Flame resistance:** BS 5852 Crib 5 with treatment. BS 5852 part 1. DIN 4102 B2. EN 1021-1/2. IMO FTP Code 2010:Part 8. UNI 9175 11M. US Cal. Bull. 117-2013. ÖNORM B1 / Q1. (Copy of test report available).  
**Care** Please see [www.kvadrat.dk/care-and-maintenance](http://www.kvadrat.dk/care-and-maintenance).

### **Skye** Designed by Georgina Wright

**Application** Offices, hotels, institutions, domestic use. Great durability.  
**Description** 90% new wool, worsted, 10% nylon. Width app. 55 inches (140 cm). Weight app. 580 g/lin.m. Yarn dyed. Colour differences may occur.  
**Abrasion:** App. 100,000 rubs acc. to the Martindale method EN ISO 12947.  
**Lightfastness (ISO) 6. Pilling (EN ISO) 4. Fastness to rubbing (ISO) dry 4-5, wet 4-5. Flame resistance:** AS/NZS 3837 Class 2. BS 5852 Crib 5 with treatment. BS 5852 part 1. EN 1021-1/2. IMO FTP Code 2010:Part 8. NF D 60 013. SN 198 898 5.3 with treatment. UNI 9175 11M. US Cal. Bull. 117-2013. (Copy of test report available).  
**Care** Please see [www.kvadrat.dk/care-and-maintenance](http://www.kvadrat.dk/care-and-maintenance).

### **Fuse** Designed by Raf Simons

Please see description on Black/White Card

### **Hero** Designed by Patricia Urquiola

Please see description on Black/White Card

### **Re-wool** Designed by Margrethe Odgaard

Please see description on Black/White Card

### **San** Designed by Louise Sigvardt

Please see description on Black/White Card

### **Steelcut Trio 3** Designed by Frans Dijkmeijer and Giulio Ridolfo

Please see description on Black/White Card

### **Vidar 3** Designed by Raf Simons and Fanny Aronsen

Please see description on Black/White Card

Fuse Cat. D





Fuse Col. 981



Fuse Col. 191



### **Divina MD** Designed by Finn Sködt

**Application** Offices, hotels, institutions, domestic use.

**Description** 100% new wool. Width app. 59 inches (150 cm). Weight app. 840 g/lin.m. Material dyed. Colour differences will occur.

**Abrasion:** App. 45,000 rubs acc. to the Martindale method EN ISO 12947.

**Lightfastness (ISO) 5-6. Pilling (EN ISO) 3. Fastness to rubbing (ISO) dry 4-5, wet 4. Sound absorption (EN ISO 354) 0.60/Class C (flat), 0.70/Class C (waved).**

**Airflow** 678 Pa s/m. **Flame resistance:** AS/NZS 1530.3. BS 5852 Crib 5. BS 5852 Part 1. EN 1021-1/2. EN 13501, C-s1, d0. IMO FTP Code 2010:Part 8. NF D 60 013. NFPA 260. SN 198 898 5.3 with treatment. UNI 9175 11M. US Cal. Bull. 117-2013. ÖNORM B1 / Q1. (Copy of test report available).

**Care** Please see [www.kvadrat.dk/care-and-maintenance](http://www.kvadrat.dk/care-and-maintenance).

### **Hallingdal 65** Designed by Nanna Ditzel

**Application** Offices, hotels, institutions, domestic use. Great durability.

**Description** 70% new wool, 30% viscose. Width 51 inches (130 cm). Weight app. 795 g/lin.m. Material dyed. Foreign fibre may occur in light colours. Colour differences may occur.

**Abrasion:** App. 100,000 rubs acc. to the Martindale method EN ISO 12947.

**Lightfastness (ISO) 5-7. Pilling (EN ISO) 3-4. Fastness to rubbing (ISO) dry 4-5, wet 3-5. Sound absorption (EN ISO 354) 0.45/Class D (flat), 0.70/Class C (waved). Airflow** 210 Pa s/m. **Flame resistance:** AS/NZS 1530.3. AS/NZS 3837. BS 5852 Crib 5. BS 5852 part 1. EN 1021-1/2. GB 50222 B1 with treatment. IMO FTP Code 2010:Part 8. NF D 60 013. NFPA 260. SN 198 898 5.3 with treatment. UNI 9175 11M. US Cal. Bull. 117-2013. ÖNORM B1 / Q1. (Copy of test report available).

**Care** Please see [www.kvadrat.dk/care-and-maintenance](http://www.kvadrat.dk/care-and-maintenance).

### **Pilot** Designed by Raf Simons

**Application** Offices, hotels, institutions, domestic use. Great wearability.

**Description** 82% new wool, worsted. 10% polyester. 8% nylon. Width 55 inches (140 cm). Weight app. 770 g/lin.m. Yarn dyed. Colour differences may occur.

**Abrasion:** App. 70,000 rubs acc. to the Martindale method EN ISO 12947.

**Lightfastness (ISO) 7. Pilling (EN ISO) 4. Fastness to rubbing (ISO) dry 4-5, wet 3-5. Flame resistance:** BS 5852 Crib 5 with treatment. BS 5852 part 1. DIN 4102 B2. EN 1021-1/2. IMO FTP Code 2010:Part 8. UNI 9175 11M. US Cal. Bull. 117-2013. ÖNORM B1 / Q1. (Copy of test report available).

**Care** Please see [www.kvadrat.dk/care-and-maintenance](http://www.kvadrat.dk/care-and-maintenance).

### **Canvas 2** Designed by Giulio Ridolfo

Please see description on [Black/White Card](#)

### **Harald 3** Designed by Raf Simons and Fanny Aronsen

Please see description on [Black/White Card](#)

### **Raas** Designed by Doshi Levien

Please see description on [Black/White Card](#)

### **Re-wool** Designed by Margrethe Odgaard

Please see description on [Black/White Card](#)

### **San** Designed by Louise Sigvardt

Please see description on [Black/White Card](#)

### **Twill Weave** Designed by Jonathan Olivares

Please see description on [Black/White Card](#)

### **Divina Melange 3** Designed by Finn Sködt

**Application** Offices, hotels, institutions, domestic use.

**Description** 100% new wool. Width app. 59 inches (150 cm). Weight app. 840 g/lin.m. Piece dyed. Colour differences may occur.

**Abrasion:** App. 45,000 rubs acc. to the Martindale method EN ISO 12947.

**Lightfastness (ISO) 5-7. Pilling (EN ISO) 3. Fastness to rubbing (ISO) dry 4-5, wet 4. Sound absorption (EN ISO 354) 0.60/Class C (flat), 0.70/Class C (waved).**

**Airflow** 678 Pa s/m. **Flame resistance:** AS/NZS 1530.3. BS 5852 Crib 5. BS 5852 ignition source 3. BS 5852 Part 1. BS 5867 Part 2 Type B. EN 1021-1/2. EN 13501, C-s1, d0. IMO FTP Code 2010:Part 8. NF D 60 013. NFPA 260. SN 198 898 5.3 with treatment. UNI 9175 11M. US Cal. Bull. 117-2013. ÖNORM B1 / Q1. (Copy of test report available).

**Care** Please see [www.kvadrat.dk/care-and-maintenance](http://www.kvadrat.dk/care-and-maintenance).

### **Merit** by Maharam Designed by Maharam Design Studio

**Application** Offices, hotels, institutions, domestic use. Great durability.

**Description** 76% post-consumer recycled polyester, 24% polyester. Stain resistant (PFOA free). Width app. 54 inches (137 cm). Weight app. 500 g/lin.m. Yarn dyed. Colour differences may occur.

**Abrasion:** App. 85,000 rubs acc. to the Martindale method EN ISO 12947. App. 100,000 double rubs acc. to Wyzenbeek method. **Lightfastness (ISO) 6-7. Pilling (EN ISO) 4. Fastness to rubbing (ISO) dry 4-5, wet 4-5. Flame resistance:** BS 476 part 7 + 6 with treatment. BS 5852 Crib 5 with treatment. BS 5852 part 1 with treatment. EN 1021-1/2. US Cal. Bull. 117-2013. (Copy of test report available).

**Care** Please see [www.kvadrat.dk/care-and-maintenance](http://www.kvadrat.dk/care-and-maintenance).

### **Skye** Designed by Georgina Wright

**Application** Offices, hotels, institutions, domestic use. Great durability.

**Description** 90% new wool, worsted, 10% nylon. Width app. 55 inches (140 cm). Weight app. 580 g/lin.m. Yarn dyed. Colour differences may occur.

**Abrasion:** App. 100,000 rubs acc. to the Martindale method EN ISO 12947.

**Lightfastness (ISO) 6. Pilling (EN ISO) 4. Fastness to rubbing (ISO) dry 4-5, wet 4-5. Flame resistance:** AS/NZS 3837 Class 2. BS 5852 Crib 5 with treatment. BS 5852 part 1. EN 1021-1/2. IMO FTP Code 2010:Part 8. NF D 60 013. SN 198 898 5.3 with treatment. UNI 9175 11M. US Cal. Bull. 117-2013. (Copy of test report available).

**Care** Please see [www.kvadrat.dk/care-and-maintenance](http://www.kvadrat.dk/care-and-maintenance).

### **Fuse** Designed by Raf Simons

Please see description on [Black/White Card](#)

### **Hero** Designed by Patricia Urquiola

Please see description on [Black/White Card](#)

### **Remix 2** Designed by Giulio Ridolfo

Please see description on [Black/White Card](#)

### **Safire** Designed by Sahco

Please see description on [Black/White Card](#)

### **Steelcut Trio 3** Designed by Frans Dijkmeijer and Giulio Ridolfo

Please see description on [Black/White Card](#)

### **Vidar 3** Designed by Raf Simons and Fanny Aronsen

Please see description on [Black/White Card](#)



---

L. P.

---



ZELANDER CHECK COL 207 MIDNIGHT

LANCELOT COL 12 BIANCORE



LANCELOT COL 14 KASHA



ALTAI MELANGE COL 7 LIGHT MARENGO



Codice articolo	Nome	Altezza	Peso	Composizione	Martindale	Caratteristiche tecniche e lavabilità
A3668RS	ALTAI MELANGE	150 CM	570 GR/MTL	90%WV 10%WS	25.000	    
A9442RS	LANCELOT	150 CM	530 GR/MTL	100%WV	10.000	    
A6448RS	PECORA NERA	150 CM	755 GR/MTL	100%WV	18.600	    
A5824BRS	ZELANDER CHECK	150 CM	480 GR/MTL	100%WV	14.300	    

**Fabric**

ALTAI UNITO e MELANGE  
LANCELOT  
PECORA NERA  
ZELANDER TWILL e CHECK

**Cat.**

D  
D  
D  
D

Gebrüder Thonet Vienna GmbH (GTV)  
Prinz Eugen Straße 42  
1040 Wien, (Austria)  
Offices of the trademarks' licensee  
Production Furniture International S.p.A  
Via Foggia, 23/H - 10152 Torino Italy

[www.gebruederthonetvienna.com](http://www.gebruederthonetvienna.com)



---

L. P.

---



ZELANDER CHECK COL 205 ENGLISH RED

ALTAI UNITO COL 14 SHADED BROWN



LANCELOT COL 13 NATURAL BROWN



ALTAI MELANGE COL 2 NATURAL BROWN



ALTAI UNITO COL 38 HENNE



PECORA NERA COL 1 NATURAL BROWN



ALTAI UNITO COL 27 VICUNA CHEST



LANCELOT COL 16 AMARANTO



ZELANDER TWILL COL 102 SITATUNGA



Codice articolo	Nome	Altezza	Peso	Composizione	Martindale	Caratteristiche tecniche e lavabilità
A3668RS	ALTAI MELANGE	150 CM	570 GR/MTL	90%WV 10%WS	25.000	    
A4668RS	ALTAI UNITO	150 CM	610 GR/MTL	90%WV 10%WS	25.000	    
A9442RS	LANCELOT	150 CM	530 GR/MTL	100%WV	10.000	    
A6448RS	PECORA NERA	150 CM	755 GR/MTL	100%WV	18.600	    
A5824RS	ZELANDER TWILL	150 CM	480 GR/MTL	100%WV	14.300	    
A5824BRS	ZELANDER CHECK	150 CM	480 GR/MTL	100%WV	14.300	    

### Fabric

ALTAI UNITO e MELANGE  
LANCELOT  
PECORA NERA  
ZELANDER TWILL e CHECK

### Cat.

D  
D  
D  
D

Gebrüder Thonet Vienna GmbH (GTV)  
Prinz Eugen Straße 42  
1040 Wien, (Austria)  
Offices of the trademarks' licensee  
Production Furniture International S.p.A  
Via Foggia, 23/H - 10152 Torino Italy

[www.gebruederthonetvienna.com](http://www.gebruederthonetvienna.com)





Pelle di Poltrona Frau



---

## Pelle di Poltrona Frau

---

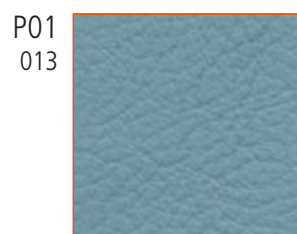
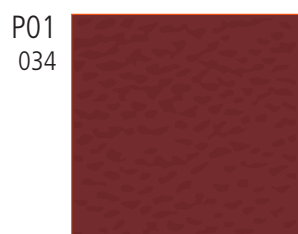
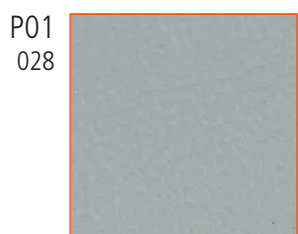
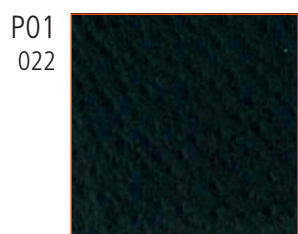
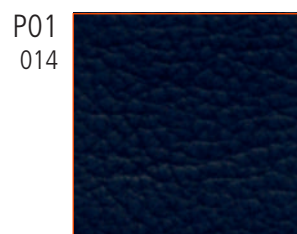
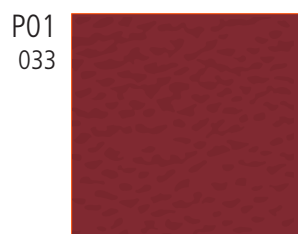
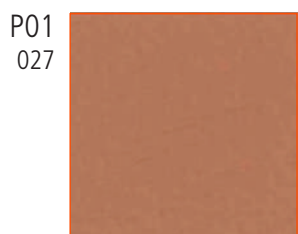
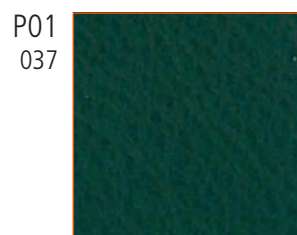
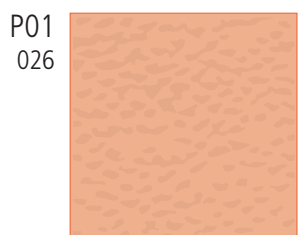
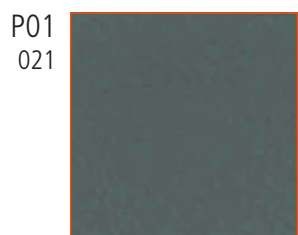
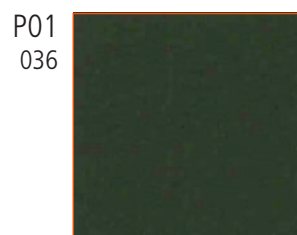
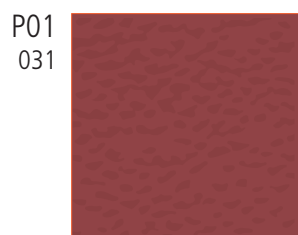
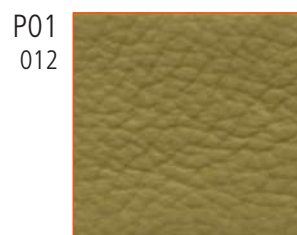
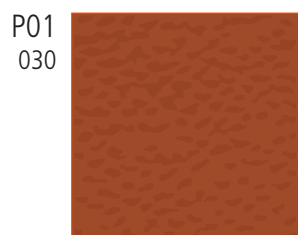
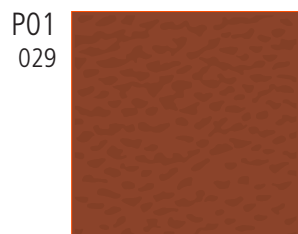
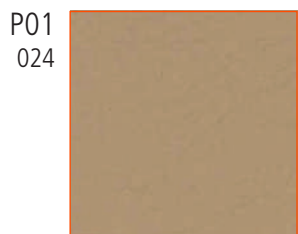
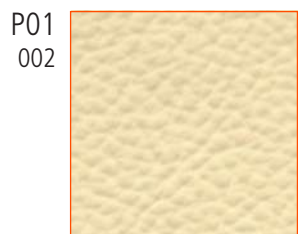
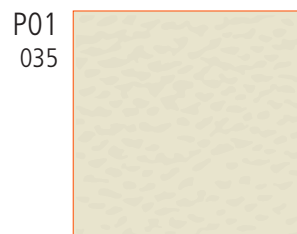
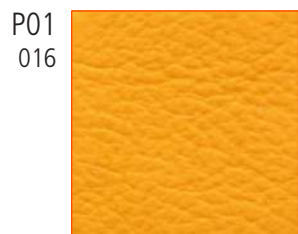
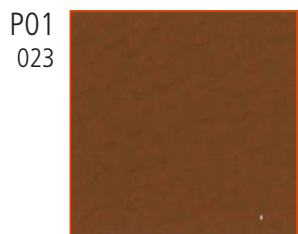
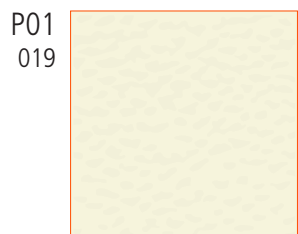
Origine/Origin:	Tori Europei/European Bulls
Concia/Tanning:	Cromo/Chromium
Aspetto/Aspect:	Grana naturale/Natural grain
Mano e tatto/Hand and touch:	Morbido e setoso/Soft and silky
Spessore/Thickness:	1,2-1,4 mm
Tipologia/Typology:	Pelle pigmentata/Pigmented skin

---

### **Resistenza al Fuoco/Resistance to Fire**

S.I. 1324 e succ.  
mod. – Sch. 5 Part 1 e Sch. 4  
Part 1 (sorgenti 1 e 0)  
TB117: 2013, sezione 1

---



Gebrüder Thonet Vienna GmbH (GTV)  
Prinz Eugen Straße 42  
1040 Wien, (Austria)  
Offices of the trademarks' licensee  
Production Furniture International S.p.A  
Via Foggia, 23/H - 10152 Torino Italy

**[www.gebruederthonetvienna.com](http://www.gebruederthonetvienna.com)**