


## MANIFESTO FUTURISTA - E

Codice articolo Article code	Nome Name	Altezza Width	Rapporto Repeat	Composizione Composition	Martindale Martindale	Caratteristiche tecniche e lavabilità Technical characteristics and cleanability
T17030	Manifesto Futurista	148 cm 58.26"	↓ 186 cm - 73.23 ↔ 147 cm - 57.87"	80%PES 20%CO	-	



**DEDAR**  
MILANO



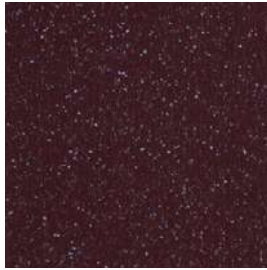
MANIFESTO FUTURISTA - 002 SMERALDO



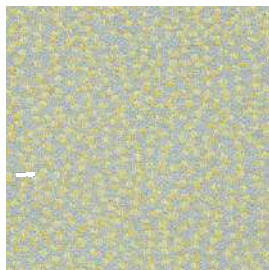
MANIFESTO FUTURISTA - 001 CUIVRE

# Pilot Cat. E

## Ria Cat. E



Pilot Col. 582



Ria Col. 441



Ria Col. 551

### Ria Designed by Raf Simons

**Application** Offices, hotels, institutions, domestic use. Great durability.

**Description** 84% new wool, worsted. 12% viscose. 4% nylon. Width app. 55 inches (140 cm). Weight app. 980 g/lin.m. Yarn dyed. Colour differences may occur.

**Abrasion:** App. 50,000 rubs acc. to the Martindale method EN ISO 12947.

**Lightfastness (ISO) 7. Pilling (EN ISO) 4. Fastness to rubbing (ISO) dry 3-5, wet 3-5. Flame resistance:** BS 5852 Crib 5 with treatment. BS 5852 part 1. EN 1021-1/2. IMO FTP Code 2010:Part 8. NF D 60 013. UNI 9175 1IM. US Cal. Bull. 117-2013. (Copy of test report available).

**Care** Please see [www.kvadrat.dk/care-and-maintenance](http://www.kvadrat.dk/care-and-maintenance).

### Pilot Designed by Raf Simons

**Application** Offices, hotels, institutions, domestic use. Great wearability.

**Description** 82% new wooll, worsted. 10% polyester. 8% nylon. Width 55 inches (140 cm). Weight app. 770 g/lin.m. Yarn dyed. Colour differences may occur.

**Abrasion:** App. 70,000 rubs acc. to the Martindale method EN ISO 12947.

**Lightfastness (ISO) 7. Pilling (EN ISO) 4. Fastness to rubbing (ISO) dry 4-5, wet 3-5. Flame resistance:** BS 5852 Crib 5 with treatment. BS 5852 part 1. DIN 4102 B2. EN 1021-1/2. IMO FTP Code 2010:Part 8. UNI 9175 1IM. US Cal. Bull. 117-2013. ÖNORM B1/ Q1. (Copy of test report available).

**Care** Please see [www.kvadrat.dk/care-and-maintenance](http://www.kvadrat.dk/care-and-maintenance).

Quality and environmental system accreditation according to ISO 9001 and ISO 14001. Encouraging the use of sustainable fibres. Durable and high quality. Hazardous substances restricted. Contact and further information [www.kvadrat.dk](http://www.kvadrat.dk)



## Pilot Cat. E



Pilot Col. 772

### Pilot Designed by Raf Simons

**Application** Offices, hotels, institutions, domestic use. Great wearability.

**Description** 82% new wooll, worsted. 10% polyester. 8% nylon. Width 55 inches (140 cm). Weight app. 770 g/lin.m. Yarn dyed. Colour differences may occur.

**Abrasion:** App. 70.000 rubs acc. to the Martindale method EN ISO 12947.






**Lightfastness** (ISO) 7. **Pilling** (EN ISO) 4. **Fastness to rubbing** (ISO) dry 4-5, wet 3-5. **Flame resistance:** BS 5852 Crib 5 with treatment. BS 5852 part 1. DIN 4102 B2. EN 1021-1/2. IMO FTP Code 2010:Part 8. UNI 9175 1IM. US Cal. Bull. 117-2013. ÖNORM B1 / Q1. (Copy of test report available).

**Care** Please see [www.kvadrat.dk/care-and-maintenance](http://www.kvadrat.dk/care-and-maintenance).



## SHERPAS MELANGE COL 18 DARK MARENGO



Codice articolo	Nome	Altezza	Peso	Composizione	Martindale	Caratteristiche tecniche e lavabilità
A4699RS	SHERPAS MELANGE	150 CM	480 GR/MTL	100%WS	8.000	    
A3699RS	SHERPAS UNITO	150 CM	480 GR/MTL	100%WS	8.000	    

## SHERPAS UNITO COL 18 CORALLO



## SHERPAS UNITO COL 21 AUBERGINE



Codice articolo	Nome	Altezza	Peso	Composizione	Martindale	Caratteristiche tecniche e lavabilità
A4699RS	SHERPAS MELANGE	150 CM	480 GR/MTL	100%WS	8.000	    
A3699RS	SHERPAS UNITO	150 CM	480 GR/MTL	100%WS	8.000	    