

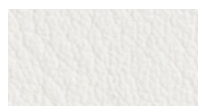
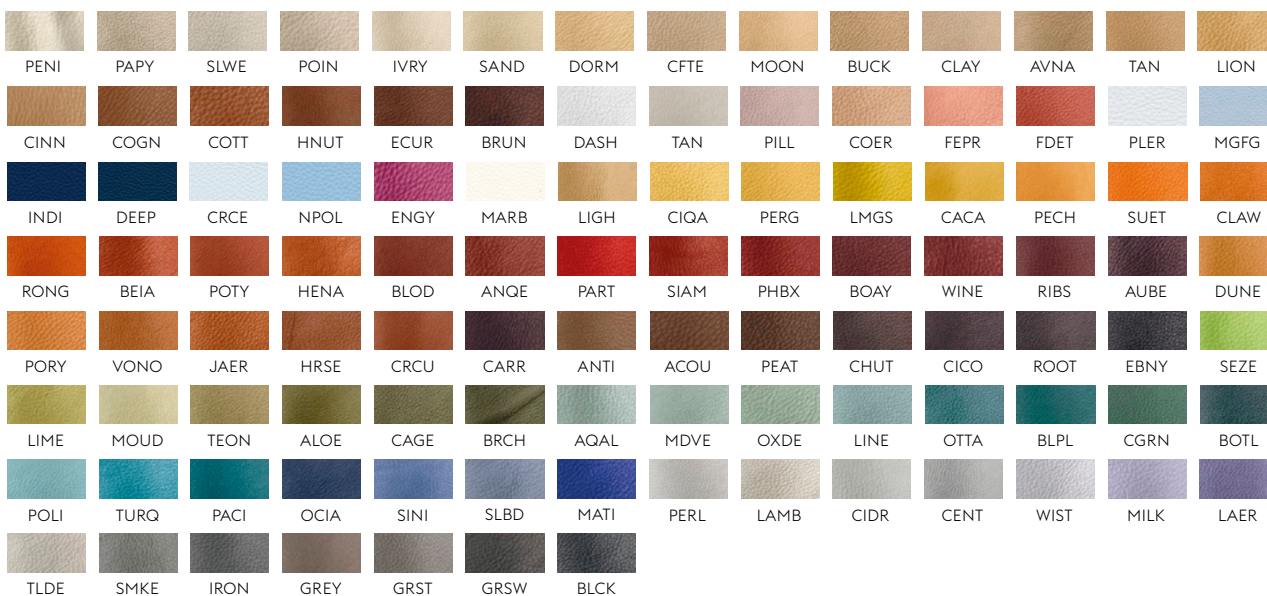
# LEATHER OPTIONS



## EASY LEATHER

Lightly Buffed Natural Grain Leather  
Raw material: Designed and processed in Italy. The leather is dyed through, chrome tanned and finishing is with resins and pigments.

ZINC



## ENDURE LEATHER

Semi-aniline leather with high durability, making it ideal for contract environments.  
Raw material: Leather from Scandinavian raw hides.  
The leather is dyed through a chrome free tanning process. Also available in custom colors in a minimum of 1 hide.

CWIT





**FAUX LEATHER**

Imitation leather.

Composition: 85% PVC, 15% cotton. Durability: 75.000 Martindale.

Resistant to disinfectant which makes it suitable for Healthcare and Education environments. IMO certified.

Note that this product contains O,I - O,2 % C,C'-azodi (formamide), CAS no. 123-77-3.

AMST



**REFINE LEATHER**

Aniline Leather.

Raw material: Grain leather from European raw hides. The leather is dyed through, chrome tanned and produced without the use of PCP and CFC which can be damaging to the environment.

CREM

