

POIAT

Fabric Collection

The Poiat fabric collection is a carefully curated assortment of high-quality textiles. We created a collection where various textures and moods come to life. The color tones in the collection are natural and harmonious. If you are looking for more colorful version, you are welcome to choose a more vibrant option within the same fabric quality.

We have compiled soft materials to serve all our collections, including the Aqueduct and Unio sofa collections, along with the Lavitta and Eetos chair collection's upholstered seats. When choosing the right fabric for your furniture, please refer to our recommendations for each collection.

For the Aqueduct sofa base, we recommend a specific shade of Alcantara for each fabric. Taking the interior into consideration, you can also choose another tone for the base, or one option is to upholster the base with the same fabric as the entire sofa.

We also offer a COM (Customer's Own Material) option. Furthermore, we can provide a sofa upholstered with custom fabric of your choice and handle the entire process. Feel free to request a quote from us for this. Please ensure the suitability of the fabric for each product by contacting us at furniture@poiat.com.



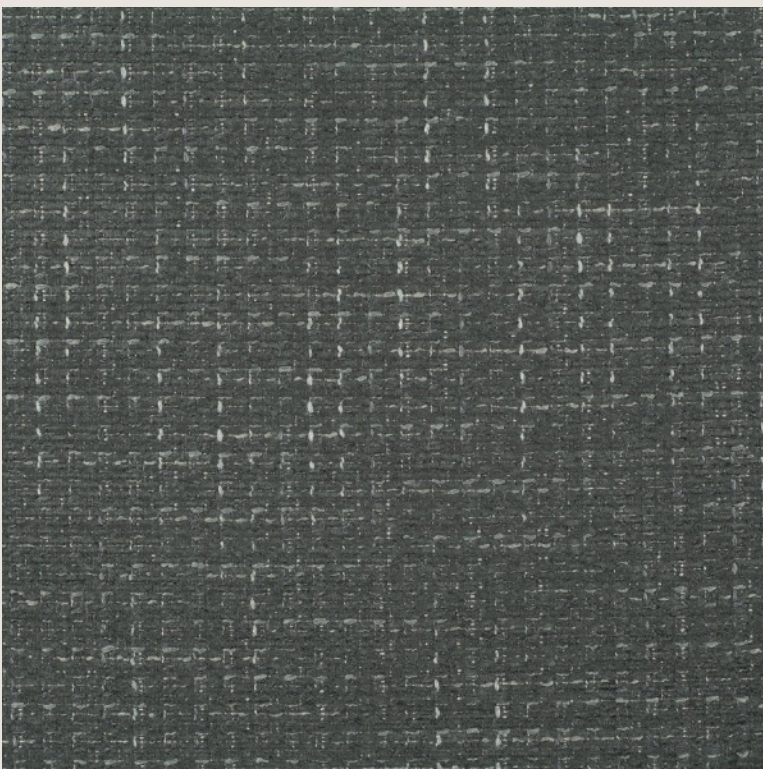
The flame icon in the fabric's details indicates that the fabric has some fire safety certification. However, please verify the adequacy of the certification for your own area and the other technical details of the fabric from the manufacturer's website.



Fabric group 1.



072
Matching color for Aqueduct plinth base: Alcantara 3003



095
Matching color for Aqueduct plinth base: Alcantara 3003

YANG by CHIVASSO

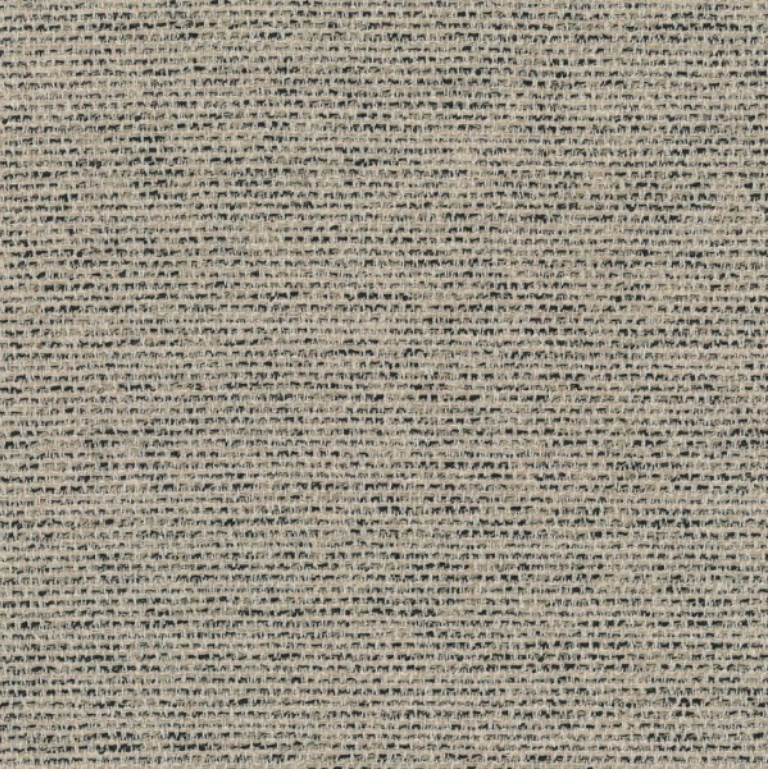
COMPOSITION
75% polyacrylic, 25% polyester

MARTINDALE 30 000
For domestic use

Link to more information about this fabric:
[Chivasso | Yang](#)

Recommended for collections:
Aqueduct / Unio / Eetos

Fabric group 1.



122

Matching color for Aqueduct plinth base: Alcantara 3003



952

Matching color for Aqueduct plinth base:
Alcantara 3003 / 6422

SAVANNA by KVADRAT

COMPOSITION

34% Polyester, 31% New Wool, 26% Acrylic, 4% Cotton,
3% Nylon, 2% Linen

MARTINDALE 45000



Please verify the correct fire safety certificates on the
manufacturer's website

Recommended for collections:

Aqueduct / Unio / Eetos / Lavitta

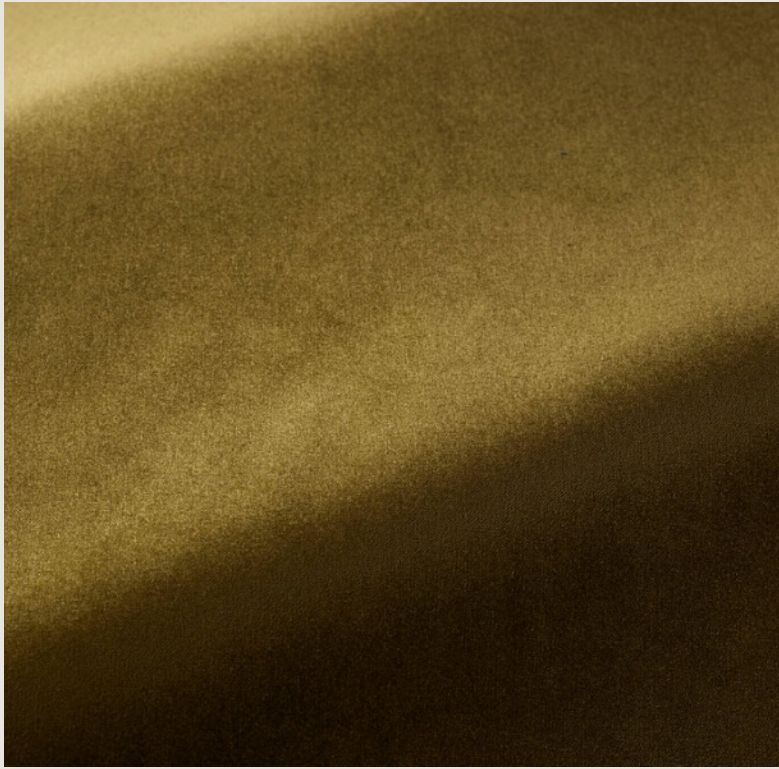
Link to more information about this fabric:

[Kvadrat | Savanna](#)

Fabric group 2.



F3370002 Gingembre
Matching color for Aqueduct plinth base: Alcantara 3003



F3370007 Kaki
Matching color for Aqueduct plinth base: Alcantara 3003

BALTAZAR by PIERRE FREY

COMPOSITION
100 % Polyester

MARTINDALE 100000

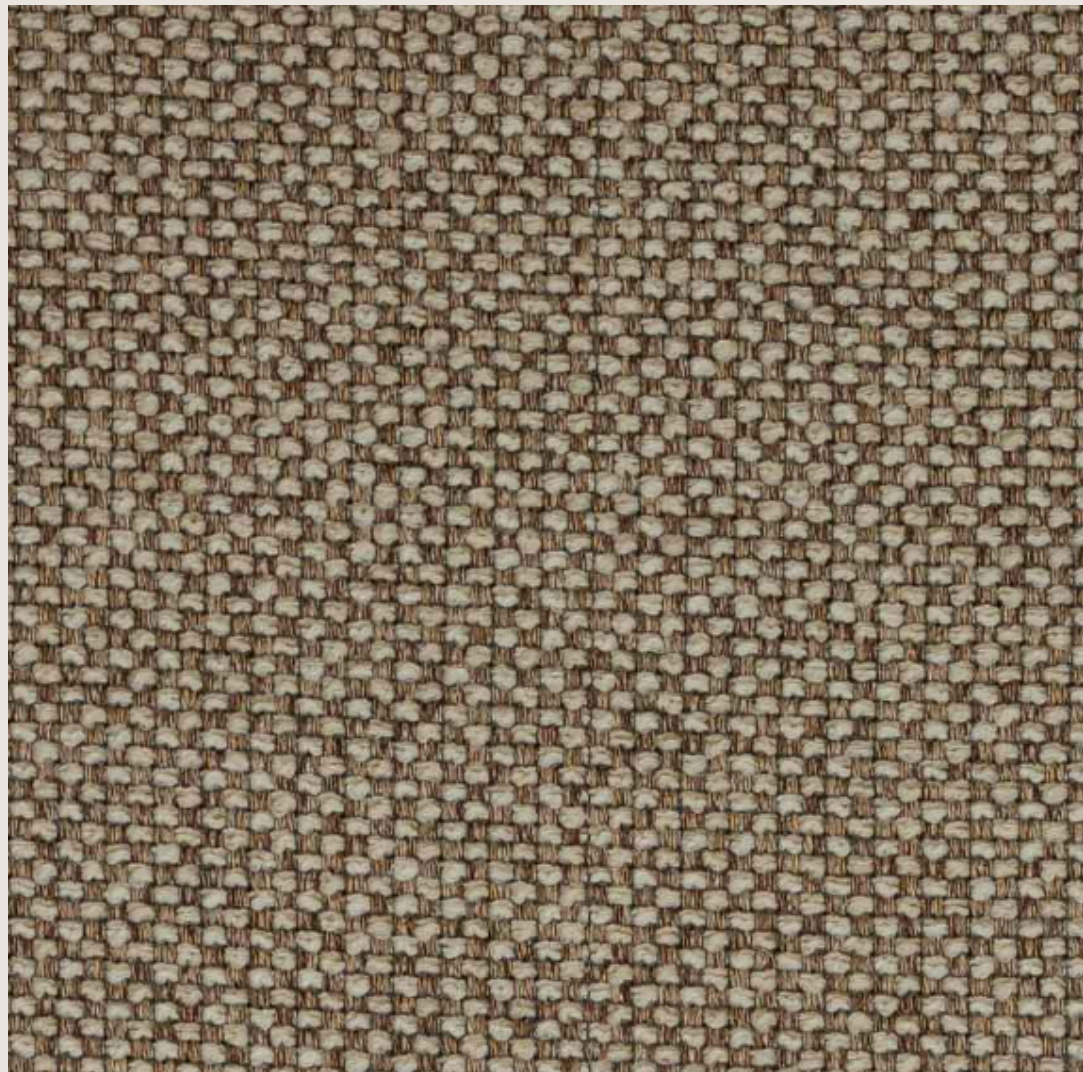


Please verify the correct fire safety certificates on the
manufacturer's website

Link to more information about this fabric:
[Pierre Frey | Baltazar](#)

Recommended for collections:
Aqueduct / Unio

Fabric group 2.



003 sand

Matching color for Aqueduct plinth base: Alcantara 3003

WILLIS by LARSEN

COMPOSITION

34 % Cotton, 20 polyester, 18 % Acrylic, 17 % Wool, 12 %
Linen

MARTINDALE 50000

Link to more information about this fabric:

[Larsen | Willis](#)

Recommended for collections:
Aqueduct / Unio / Eetos

Fabric group 2.



002 Noir de café
Matching color for Aqueduct plinth base: Alcantara 3003



001 Noix de Coco
Matching color for Aqueduct plinth base:
Alcantara 3003 / 6422

ATHERINI by DEDAR

COMPOSITION
59% polyester 41% cotton

MARTINDALE 40 000

Link to more information about this fabric:
[Dedar | Atherini](#)

Recommended for collections:
Aqueduct / Unio / Eetos

Fabric group 3.



001 Écru

Matching color for Aqueduct plinth base: Alcantara 3003

ENEIDE by DEDAR

COMPOSITION

36% Polyester, 34% Cotton, 31 % Acrylic

MARTINDALE 40 000

Link to more information about this fabric:

[Dedar | Eneide](#)

Recommended for collections:
Aqueduct / Unio / Eetos

Fabric group 3.



F3167002 Raphia
Matching color for Aqueduct plinth base: Alcantara 3003



F3167003 - Ficelle
Matching color for Aqueduct plinth base: Alcantara 3003



FF3167004 Racine
Matching color for Aqueduct plinth base: Alcantara 3003

HANOI by PIERRE FREY

COMPOSITION

61% Viscose, 18% Linen, 14% Cotton, 3% Silk, 3%
Acrylic, 1% Polyamid

MARTINDALE 40 000



Please verify the correct fire safety certificates on the
manufacturer's website

Link to more information about this fabric:

[Pierre Frey | Hanoi](#)

Recommended for collections:
Aqueduct / Unio / Eetos

Fabric group 3.



007
Matching color for Aqueduct plinth base: Alcantara 3003



005
Matching color for Aqueduct plinth base: Alcantara 3003

THELONIUS by DEDAR

COMPOSITION

35% Viscose, 34% Linen, 14% Cotton, 20% Cotton, 7% Polyester, 4% Acrylic

MARTINDALE 40 000

Link to more information about this fabric:

[Dedar | Thelonus](#)

Recommended for collections:
Aqueduct / Unio / Eetos / Lavitta

Fabric group 3.



001 Dune
Matching color for Aqueduct plinth base: Alcantara 3003



014 antracite
Matching color for Aqueduct plinth base: Alcantara 6422

MARABOU by DEDAR

COMPOSITION
100%PES Trevira CS

MARTINDALE 80 000



Please verify the correct fire safety certificates on the
manufacturer's website

Link to more information about this fabric:
[Dedar | Marabou](#)

Recommended for collections:
Aqueduct / Unio / Eetos / Lavitta

Fabric group 3.



F3371002 Coquillage

Matching color for Aqueduct plinth base: Alcantara 3003



F3371010 - Cachou

Matching color for Aqueduct plinth base: Alcantara 6422

Recommended for collections:
Aqueduct / Unio / Eetos

ARSENE by PIERRE FREY

COMPOSITION

42 % Viscose, 34 % Linen, 20 % Acrylic, 2 %
Polyester, 2 % Polyamide

MARTINDALE 90 000



Please verify the correct fire safety certificates on the
manufacturer's website

Link to more information about this fabric:

[Pierre Frey | Arsene](#)

Fabric group 4.



007 Ecume

Matching color for Aqueduct plinth base: Alcantara 3003

Recommended for collections:
Aqueduct / Unio / Eetos

KARAKORUM by DEDAR

COMPOSITION

42% Wool, 33% Viscose, 24% Cotton, 1% Polyamid

MARTINDALE 40 000

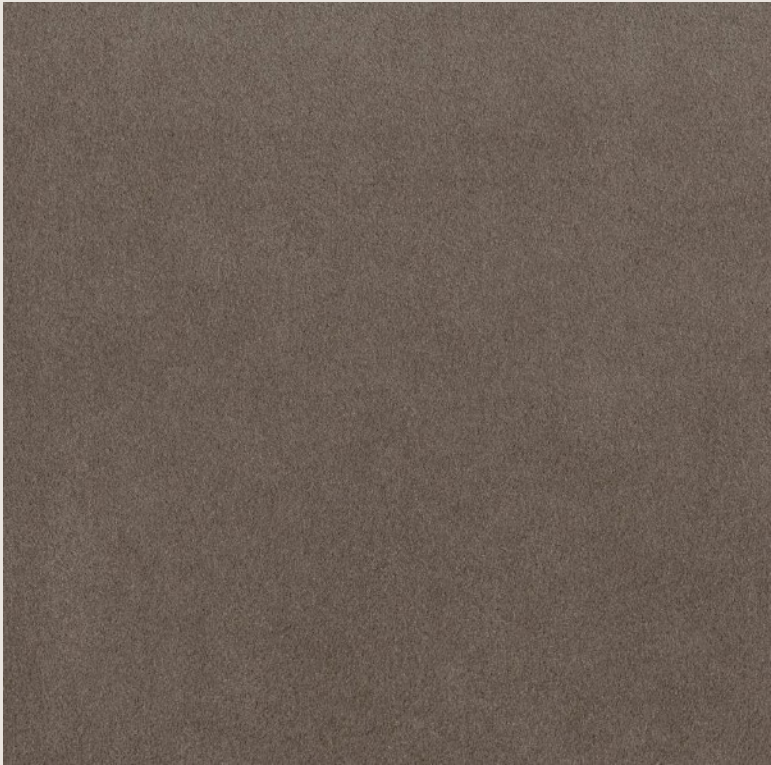


Please verify the correct fire safety certificates on the
manufacturer's website

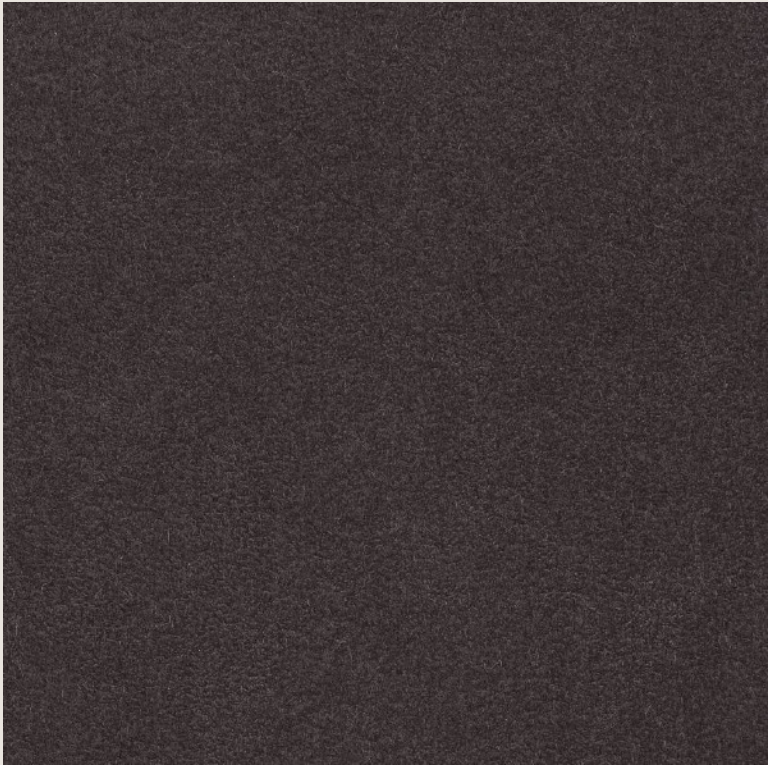
Link to more information about this fabric:

[Dedar | Karakorum](#)

Base material for Aqueduct sofa



3003 Koala



6422 Anthracite

AVANT by ALCANTARA

COMPOSITION
68% Polyester, 32% Polyurethane

MARTINDALE 150 000

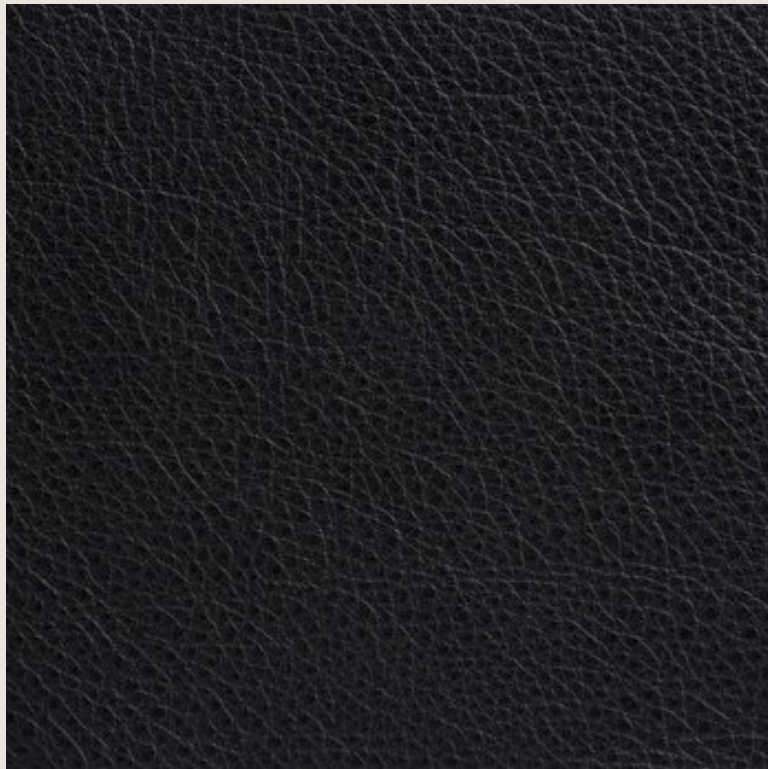


Please verify the correct fire safety certificates on the manufacturer's website

Link to more information about this fabric:
[Alcantara | Avant](#)

Recommended for collections:
Aqueduct

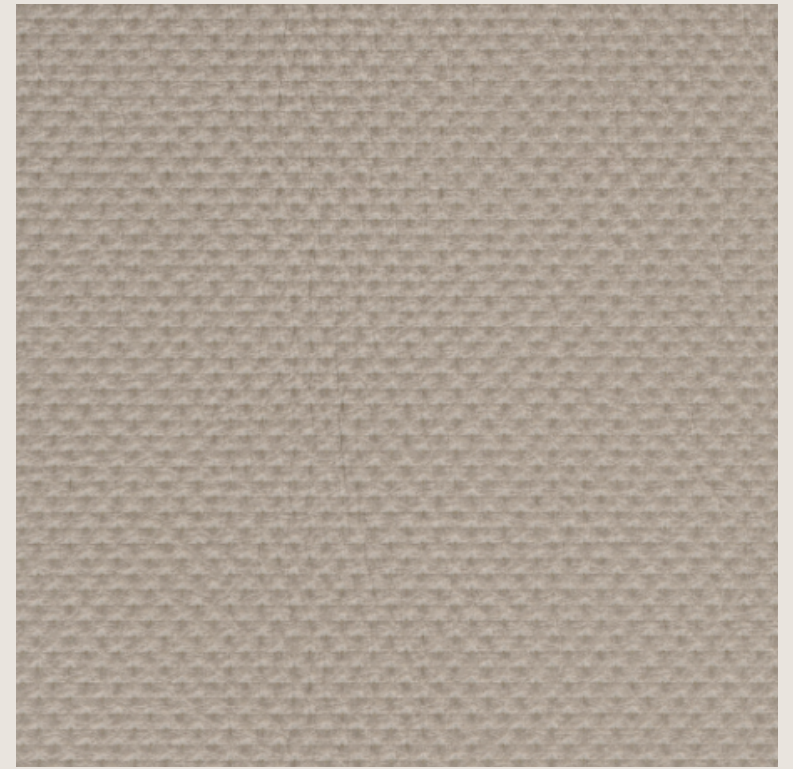
Leathers for Eetos and Lavitta chairs



Elmosoft 99999



Elmosoft 99999 Pique



Elmosoft 13072 Pique

ELMO

COMPOSITION
100% Leather



Please verify the correct fire safety certificates on the
manufacturer's website

Link to more information about this fabric:

[Elmosoft | Elmo](#)

Recommended for collections:
Eetos / Lavitta

Leathers for Eetos and Lavitta chairs



30145 Safari



30112 Coffee



21004 Camel

SØRENSEN

COMPOSITION

100% leather



Please verify the correct fire safety certificates
on the manufacturer's website

Link to more information about this fabric:

[Sørensen Spectrum & Dunes](#)

Recommended for collections:
Eetos / Lavitta



Please note that the colours can slightly vary,
depending on the indoor lighting and
computer screen.

We also offer customized fabric options that
Poiat must approve to ensure suitability for
upholstery.

For more info:
furniture@poiat.com