

punt

FINISHES

ACABADOS

WOOD MADERA



A
SUPER MATT OAK
 ROBLE SÚPER MATE
 CHÊNE SUPER MATE
 SUPERMATT EICHE
 ROVERE OPACO



C
WHITENED OAK
 ROBLE BLANQUEADO
 CHÊNE BLANCHI
 EICHE WEISS
 ROVERE SBIANCATO



C
WALNUT STAINED OAK
 ROBLE TEÑIDO NOGAL
 CHÊNE TEINTÉ NOYER
 EICHE NUSSBAUM GEBEIZT
 ROYERE TINTO NOLE



C
DARK GREY STAINED OAK
 ROBLE TEÑIDO GRIS
 CHÊNE TEINTE GRIS
 EICHE GEBEIZT DUNKELGRAU
 ROVERE TINTO GRIGIO SCURO



C
EBONY STAINED OAK
 ROBLE TEÑIDO ÉBANO
 CHÊNE TEINTÉ ÉBÈNE
 EICHE GEBEIZT EBENHOLZ
 ROVERE TINTO ÉBANO



B
SUPER MATT WALNUT
 NOGAL SÚPER MATE
 NOYER SUPER MATE
 SUPERMATT WALNUS
 NOCE OPACO



D
WALNUT STAINED WALNUT
 NOGAL TEÑIDO NOGAL
 NOYER TEINTÉ NOYER
 WALNUS GEBEIZT WALNUS
 NOCE TINTO NOCE

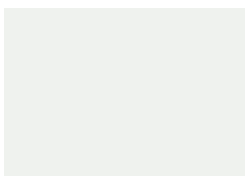


D
DARK STAINED WALNUT
 NOGAL TEÑIDO OSCURO
 NOYER TEINTÉ FONCÉ
 WALNUS DUNKEL GEBEIZT
 NOCE TINTO SCURO



D
BLACK STAINED WALNUT
 NOGAL TEÑIDO NEGRO
 NOYER TEINTÉ NOIR
 WALNUS SCHWARZ GEBEIZT
 NOCE TINTO NERO

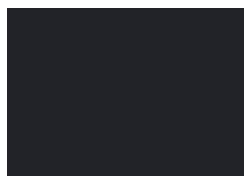
TEXTURIZED LACQUER LACADOS TEXTURIZADOS



WHITE
 BLANCO
 BLANC
 WEISS
 BIANCO



BRONZE
 BRONCE
 BRONZE
 BRONZE
 BRONZE



BLACK
 NEGRO
 NOIR
 SCHWARZ
 NERO

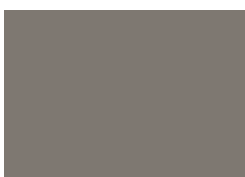


GREEN FOREST RAL 6005
 VERDE BOSQUE
 FOREST VERT
 WALDGRÜN
 VERDE FORESTA



COPPER NCS S3050-Y50R
 COBRIZO
 CUIVRE
 KUPFER
 RAME

HIGH GLOSS LACQUER LACADOS ALTO BRILLO



WARM GREY
 GRIS CÁLIDO
 GRIS CHAUD
 WARMES GRAU
 GRIGIO CALDO



OCHE RAL 8001
 OCRE
 OCRE
 OCKER
 OCRE



OLIVE GREEN RAL 6003
 VERDE OLIVA
 VERT OLIVE
 OLIVEGRÜN
 VERDE OLIVA

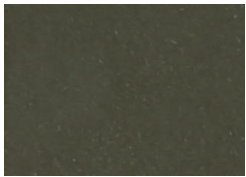


RED OXIDE RAL 3009
 ROJO ÓXIDO
 OXYDE ROUGE
 OXID ROT
 ROSSO OSSIDO



GRAYISH BLUE RAL 5008
 AZUL GRISÁCEO
 BLEU GRIS
 BLAU GRAU
 BLU GRIGIO

EPOXY LACQUERED LACADO EPOXY



BRONZE
BRONCE
BRONZE
BRONZE
BRONZO



BLACK NICKEL
NÍQUEL NEGRO
NICKEL NOIR
SCHWARZNICKEL
NICHEL NERO



BLACK
NEGRO
NOIR
SCHWARZ
NERO

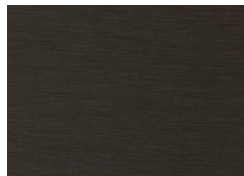
ANODISED ALUMINIUM ALUMINIO ANODIZADO



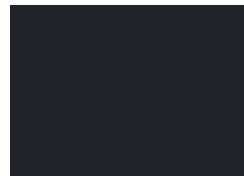
GOLD
ORO
OR
GOLD
ORO



BRONZE
BRONCE
BRONZE
BRONZE
BRONZO



CHOCOLATE
CHOCOLATE
CHOCOLAT
SCHOKOLADE
CIOCCOLATO



BLACK
NEGRO
NOIR
SCHWARZ
NERO

GLASS VIDRIO

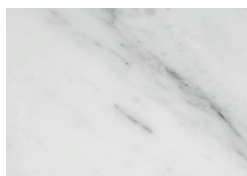


GLASS
VIDRIO
VERRE
GLAS
VETRO

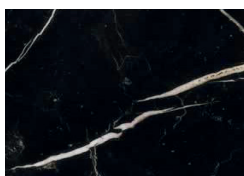


BRONZE FUME GLASS
VIDRIO FUMÉ BRONCE
VERRE FUME BRONZE
BRONZE FUME GLAS
VETRO FUMÉ BRONZO

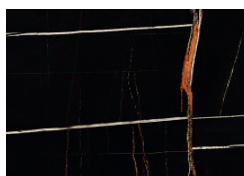
MARBLE MÁRMOL



CARRARA MARBLE
MÁRMOL CARRARA
MARBRE CARRARA
CARRARA-MARMOR
MARMO CARRARA



MARQUINA MARBLE
MÁRMOL MARQUINA
MARBRE MARQUINA
MARQUINA-MARMOR
MARMO MARQUINA



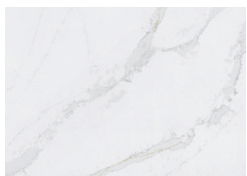
SAHARA MARBLE
MÁRMOL SAHARA
MARBRE SAHARA
SAHARA-MARMOR
MARMO SAHARA



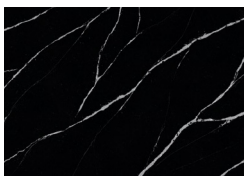
Marble pieces, because of their natural origin, present different and non-homogeneous patterns and tones.

Los mármoles, por su origen natural, presentan mallas y tonos no homogéneos de una pieza a otra.

SILESTONE

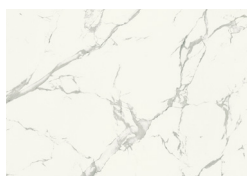


CALACATTA GOLD



MARQUINA

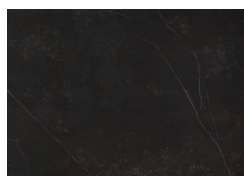
PORCELAIN PORCELÁNICO



DEKTON NATURA

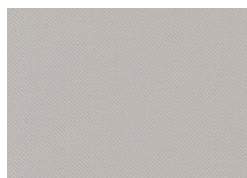


DEKTON ARGA

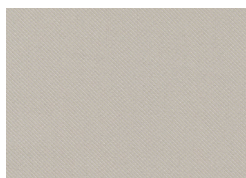


DEKTON KELYA

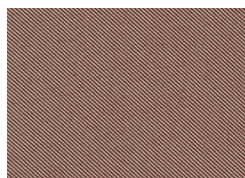
G2



KVADRAT RELATE 101



KVADRAT RELATE 201



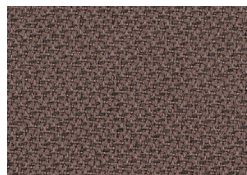
KVADRAT RELATE 341



GABRIEL TONAL 60122



GABRIEL TONAL 61179



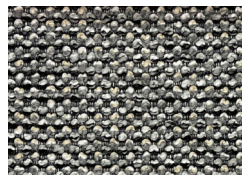
GABRIEL TONAL 64211



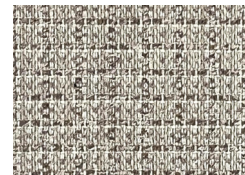
MANUEL REVERT CASERTA 04



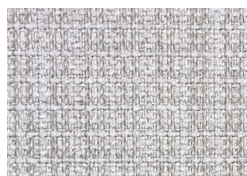
MANUEL REVERT CASERTA 15



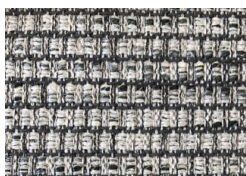
MANUEL REVERT CASERTA 19



MANUEL REVERT BACOLI 04



MANUEL REVERT BACOLI 15



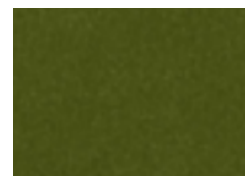
MANUEL REVERT ODDI 09



CREVIN MATIS 05



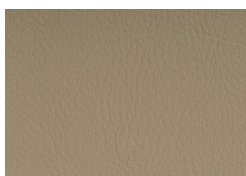
CREVIN MATIS 07



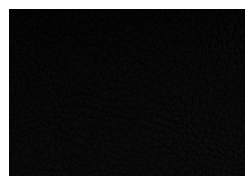
TEXTAAFOAM SEVEN 59



TEXTAAFOAM SEVEN 05



SPRADLING VALENCIA
LEINEN 1049



SPRADLING VALENCIA
SCHWARZ 9035

G3



GABRIEL TEMPT 61169



GABRIEL TEMPT 61172



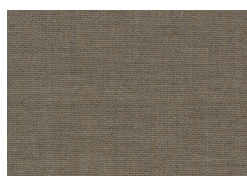
KVADRAT FIELD 232



KVADRAT FIELD 242



KVADRAT REMIX 223



KVADRAT REMIX 233



KVADRAT REMIX 123

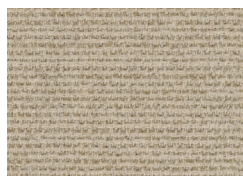
G4



GABRIEL FOCUS 60309



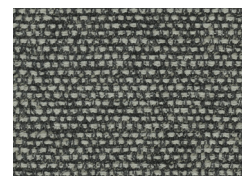
GABRIEL FOCUS 61242



KVADRAT SAVANNA 202

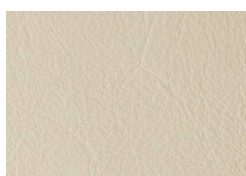


KVADRAT SAVANNA 122

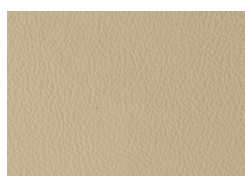


KVADRAT SAVANNA 152

G5



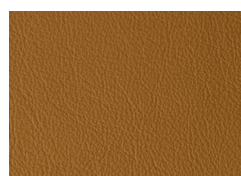
LEATHER LAGUNA IVORY



LEATHER LAGUNA SAND



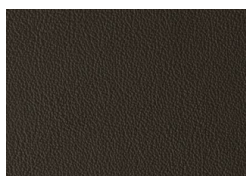
LEATHER LAGUNA STONE



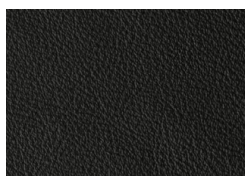
LEATHER LAGUNA CAMEL



LEATHER LAGUNA COGNAC



LEATHER LAGUNA BROWN



LEATHER LAGUNA BLACK

	COMPOSITION	DURABILITY	FIRE TEST	MAINTENANCE
CREVIN				
Matis	50% PES, 20% CV, 15% CO, 10% LI	35.000 Martindale	EN ISO 12947/4:1998 - EN 14465:2003 BS5852 Source 0 EN 1021 Part 1 NFPA 260 CAL TB-117 EN ISO 12945/2:2000 EN ISO 105-B02:1998 EN ISO105-B02 /A01:2002	    P
GABRIEL				
Focus Melagne	100% New Zealand wool	100.000 Martindale	BS EN 1021 1&2 Cigarette and Match BS 5852 Part 1,0,1 Cigarette & match CA TB 117-2013 Class Uno UNI 9175 Class 11 EMME AM 18 - NF D 60-013-(only for fabric) ONORM A3800-B1-B3825-Q1 UK	     P
Tonal	99% post-consumer recycled polyester, 1% polyester	100.000 Martindale	CA TB 117-2013 ASTM E 84 Class I BS EN 1021 1&2 Cigarette and Match BS EN 1021-1 Cigarette BS 476 Part 7 class I DIN EN 13501-1 B-s1,d0(glued)	     P
KVADRAT				
Field	100% Trevira CS	80.000 Martindale	BS 5852 Crib 5 FAR 25.853 IMO FTP Code 2010 Part 8 NF D 60 013 NF P 92 507 M1 SN 198 898 5.2 1 UNI 9175 11M UNI 9177 Classe 1 US Cal. Bull. 117-2013 DIN 4102 B1 EN 1021-1/2 NFPA 701 ASTM E84 Class A Unadhered AS/NZS 3837 class 1 ONORM B1/Q1 EN 13501-1, B-s1, d0	     P
Moss	52% cotton 22% viscose 14% polyacrylic 6% linen 3% nylon 3% polyester	50.000 Martindale	BS 5852 crib 5 with treatment BS 5852 part 1 EN 1021-1/2 US Cal. 117-2013 with Cal. 117 compliant interliner	     P
Relate	100% Trevira CS	80.000 Martindale	BS 5852 Crib 5 IMO FTP Code 2010 Part 8 NF D 60 013 NFPA 701 SN 198 898 5.2 UNI 9177 Classe 1 US Cal. Bull. 117-2013 NF P 92 507 M1 DIN 4102 B1 EN 1021-1/2 ONORM B1/Q1 ASTM E84 Class A Unadhered ASTM E84 Class B Adhered UNI 9175 11M AS/NZS 3837 class 2 EN 13501-1, B-s1, d0 BS 5867 part 2 type B BS 5852 part 1 with treatment	     P
Remix	90% new wool, 10% nylon	100.000 Martindale	AS/NZS 1530.3 BS 5852 crib 5 with treatment BS 5852 part 1 IMO FTP Code 2010 Part 7 with treatment IMO FTP Code 2010 Part 8 NF D 60 013 NFPA 260 SN 198 898 5.3 with treatment UNI 9175 11M US Cal. Bull. 117-2013 EN 1021-1/2 AS/NZS 3837 class 2 ONORM B1/Q1 ASTM E84 Class A Unadhered ASTM E84 Class A Adhered GB 50222 B1 with treatment (Chinese)	     P
Savanna	34% polyester 31% new wool 26% polyacrylic 4% cotton 3% nylon 2% linen	45.000 Martindale	BS 5852 crib 5 with treatment NF D 60 013 with treatment SN 198 898 5.3 with treatment UNI 9175 11M with treatment US Cal. Bull. 117-2013 EN 1021-1/2 AS/NZS 3837 class 2 BS 5852 part 1 with treatment	     P
LEATHER				
Babel	Leather bovine European 0.8 - 1mm	50.000 Martindale	EN ISO 4045 EN ISO 3377-1 EN ISO 11640/11641 EN ISO 105-B02 EN ISO 11644 EN ISO 5402-1 BS 5852-1: 79	     P
L'INTERNO				
Apollo	42%CO 25%VI 20%PL 13%LI	42.000 Martindale		    P  
Aquatonic	48%AC 41%PL 11%CO	80.000 Martindale	BS 5852:0 1979 Ing Cigarette TB 117-2013	     P
Rubens	65%AC 35%PL	27.000 Martindale		     P

COMPOSITION

DURABILITY

FIRE TEST

MAINTENANCE

MAHARAM

Messenger

78% Recycled polyester,
15% polyester, 7% nylon

30.000 Martindale

AS/NZS 1530.3 | AS/NZS 3837 Unadhered | ASTM E
84 Unadhered | BS 5852 Crib 5* | CAL 117-2013 | CAN
ULC S102 Unadhered | EN 1021-1* | EN 1021-2* | EN
13501 Unadhered* GB/T 17591* | ISO 5660 Unadhered
NFPA 260 | UNI 9175*
*passes with additional treatment

MANUEL REVERT

Oddi

45% PES 43% CO
11% PAC 1% PA

25.000 Martindale

UNE-EN ISO 12945-2

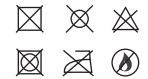


SPRADLING

Valencia

100% Vinyl

300.000 Martindale

AT: ONORM A 3800 Teil 1, Qualmbildungsklasse Q1
- schwachqualmend | AT: ONORM B 3825, Gruppe
1 - Schwerbrennbares Verhalten | DE: DIN 4102 B2 | ES:
UNE 23.727-90 1R/M.2 | EU: ECE Regulation No.118:03
(R118.02 Annexes 6, 7 & 8) | EU: EN 1021 Parte 1 y 2 |
EU: EN 71-2:2006+A1:2007 - Seguridad del juguete -
Parte 2: Inflamabilidad | FR: NF P 92-503/M2 | IMO FTP
2010 Código MSC.307 (88) Parte 8 3.1 & 3.2 | IT: UNI
9175 (1987) | UNI 9175/FA1 (1994) Classe 1.1M (UNO
IEMME)
(MED) Marine Equipment Directive (en su versión en
vigor) | US: CAL TB 117-2013, Section E | US: ASTM E 84
Adhered - Class I | US: FAR 25/853 | US: FMVSS 302 |
US: NFPA 260 - Class 1

TEXTAAFOAM

Seven

100% PES

100.000 Martindale

EN ISO 12947 1 & 2 | EN ISO 12945-2 class 4-5 | EN ISO
B02 | EN ISO 13934-1 | EN ISO 13937-3 | EN ISO 13936
2 | EN ISO 105 X12

punt

Punt Mobles XXI, S. L. , B-98387327
C/ Islas Baleares, 48, Apdo. correos 14
46988 Fuente del Jarro, Valencia, Spain

T. +34 961 343 270/ 72
F. +34 961 476 190
info@puntmobles.com

www.puntmobles.com

