

# Arflex upholstery groups

2022

## T2 - Cabas

Category: T2

Material typology: Synthetic

Fabric composition: 48% Acrylic | 7% Cotton | 23% Wool | 10% Nylon | 12% Polyester

Performance: No outdoor use

Martindale: 24.000

Pilling: 4

Height: 140

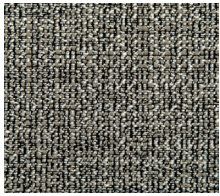
Weight: 800 gr/mtl

Lightfastness: 4/5

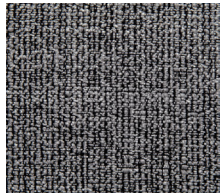
Dimensional variation to dry cleaning: -1,20%

Washing: Do not wash with water | Do not bleach | DELICATE maximum temperature 110C

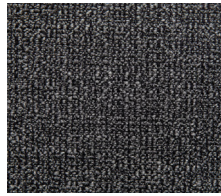
With perchloroethylene no trichloroethylene | Not tumble drying | Do not centrifuge



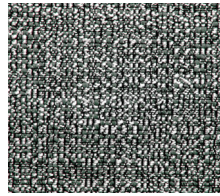
Cabas 3



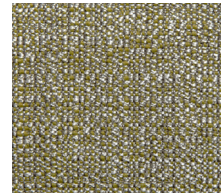
Cabas 9



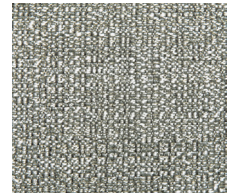
Cabas 11



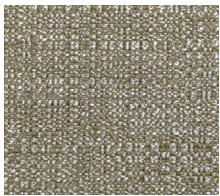
Cabas 44



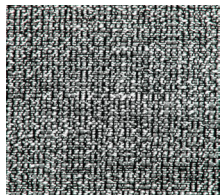
Cabas 48



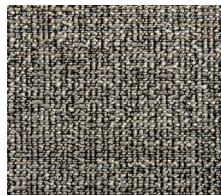
Cabas 49



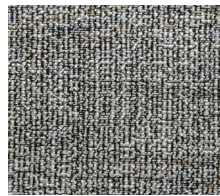
Cabas 50



Cabas 65



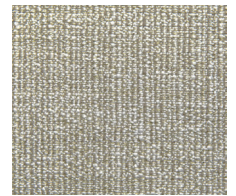
Cabas 96



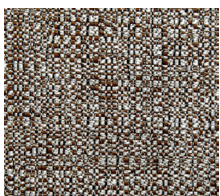
Cabas 99



Cabas 109



Cabas 154



Cabas 166



Cabas 170



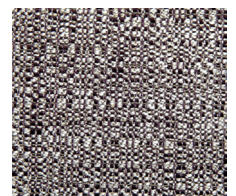
Cabas 171



Cabas 178



Cabas 179



Cabas 180

twentytwentyone

Shop: 274-275 Upper Street London N1 2UA

0207 288 1996

Showroom: 18c River Street London EC1R 1XN

0207 837 1900

## T2 - Etoile

Category: T2

Material typology: Viscose

Fabric composition: 31% Cotton | 11% Linen | 58% Viscose

Performance: No outdoor use

Martindale: 35.000

Pilling: 3/4

Height: 138

Weight: 798 gr/mtl

Lightfastness: 3/4

Dimensional variation to water washings: trama - 3,5% ordito - 3,5%

Washing: Machine cycle DELICATE maximum temperature 30C | Do not bleach | DELICATE maximum temperature 110C | With perchloroethylene no trichloroethylene | Not tumble drying



Etoile 02



Etoile 699



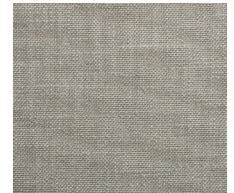
Etoile 01



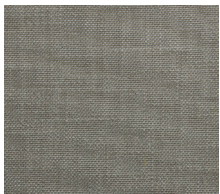
Etoile 06



Etoile 09



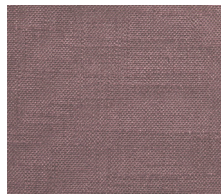
Etoile 1626



Etoile 1628



Etoile 11



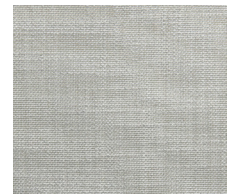
Etoile 16



Etoile 145



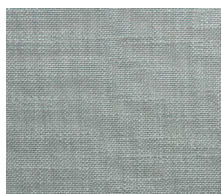
Etoile 07



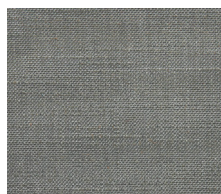
Etoile 26



Etoile 25



Etoile 150



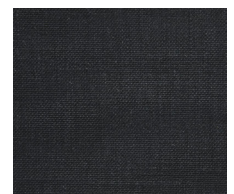
Etoile 24



Etoile 151



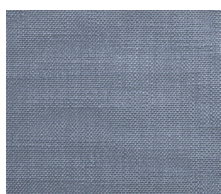
Etoile 149



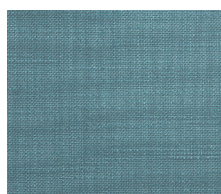
Etoile 2026



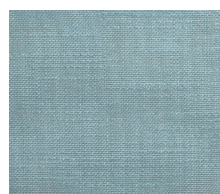
Etoile 1006



Etoile 136



Etoile 20



Etoile 1633



Etoile 19



Etoile 18

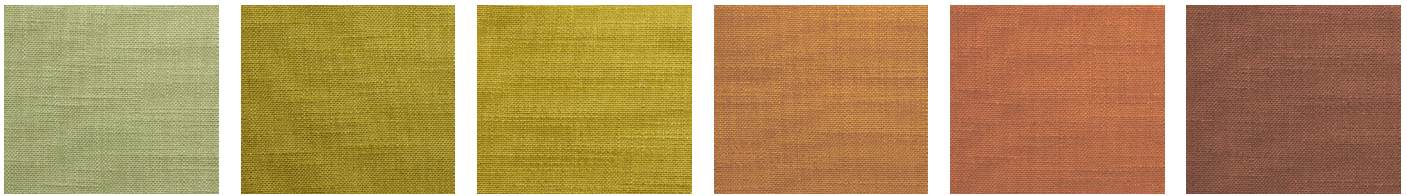
twentytwentyone

Shop: 274-275 Upper Street London N1 2UA

0207 288 1996

Showroom: 18c River Street London EC1R 1XN

0207 837 1900



Etoile M816

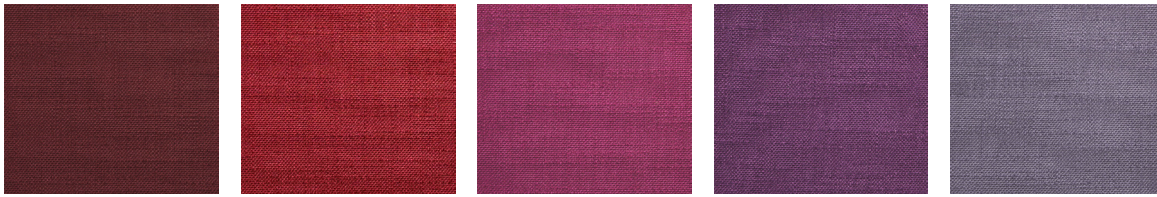
Etoile 144

Etoile 1413

Etoile 142

Etoile 141

Etoile 140



Etoile 139

Etoile 112

Etoile 147

Etoile 14

Etoile 138

### T3 - Cherie

Category: T3

Material tipology: Synthetic

Fabric composition: 32% Acrylic | 24% Cotton | 10% Linen | 3% Polyester | 26% Viscose

Performance: No outdoor use

Martindale: 30.000

Pilling: 4

Height: 140

Weight: 920 gr/mtl

Lightfastness: 4/5

Dimensional variation to dry cleaning: -1,20%

Washing: Do not wash with water | Do not bleach | DELICATE maximum temperature 110C

With perchloroethylene no trichloroethylene | Not tumble drying | Do not centrifuge



Cherie 07

Cherie 30

Cherie 18

Cherie 16

Cherie 17

Cherie 21



Cherie 25

Cherie 27

Cherie 28

Cherie 32

### T3 - Lama

Category: T3

Material typology: Wool

Fabric composition: 15% Alpaca | 65% Wool | 20% Polyamide

Performance: No outdoor use

Martindale: 100.000

Pilling: 3/4

Height: 140

Weight: 420 gr/mtl

Lightfastness: 4/5

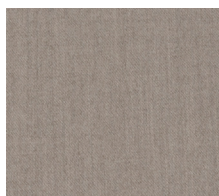
Dimensional variation to dry cleaning: -2,50%

Washing: Do not wash with water | Do not bleach | DELICATE maximum temperature 110C

With perchloroethylene no trichloroethylene | Not tumble drying



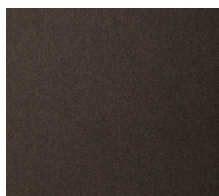
Lama 01



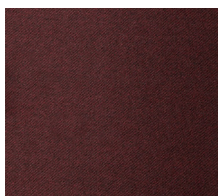
Lama 02



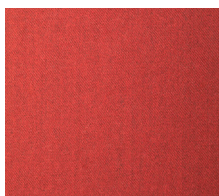
Lama 06



Lama 07



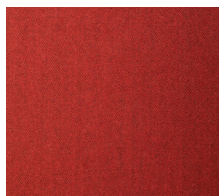
Lama 11



Lama 804



Lama 809



Lama 12



Lama 802



Lama 808



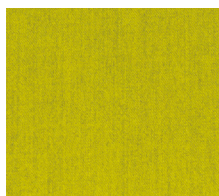
Lama 807



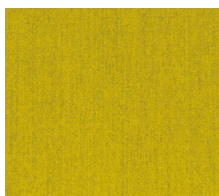
Lama 805



Lama 803



Lama 810



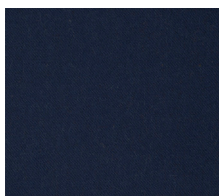
Lama 806



Lama 811



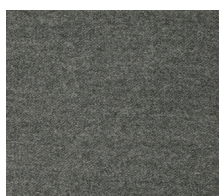
Lama 812



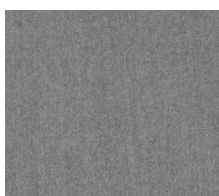
Lama 10



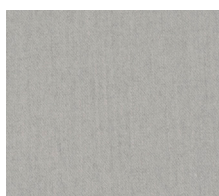
Lama 05



Lama 09



Lama 08



Lama 801

twentytwentyone

Shop: 274-275 Upper Street London N1 2UA

0207 288 1996

Showroom: 18c River Street London EC1R 1XN

0207 837 1900

## T4 - Mistral

Category: T4

Material tipology: Cotton

Fabric composition: 100% cotton

Performance: No outdoor use

Martindale: 80.000

Pilling: 4

Height: 140

Weight: 728 gr/mtl

Dimensional variation to dry cleaning: -1,50%

Washing: Do not wash with water | Do not bleach | DELICATE maximum temperature 110C

With perchloroethylene no trichloroethylene | Not tumble drying



Mistral 40



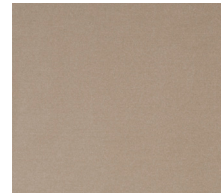
Mistral 01



Mistral 02



Mistral 03



Mistral 04



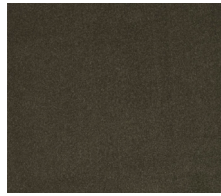
Mistral 23



Mistral 05



Mistral 06



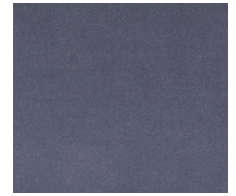
Mistral 2012



Mistral 07



Mistral 2002



Mistral 20



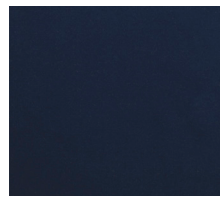
Mistral 21



Mistral 1406



Mistral 58



Mistral 54



Mistral 1402



Mistral 1401



Mistral 09



Mistral 1403



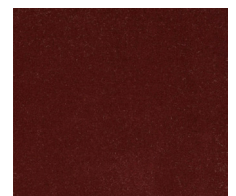
Mistral 13



Mistral 14



Mistral 2008



Mistral 1405

twentytwentyone

Shop: 274-275 Upper Street London N1 2UA

0207 288 1996

Showroom: 18c River Street London EC1R 1XN

0207 837 1900



Mistral 2007

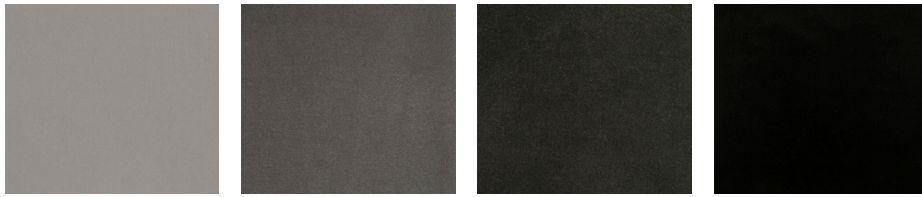
Mistral 2006

Mistral 17

Mistral 19

Mistral 2004

Mistral 29



Mistral 28

Mistral 2003

Mistral 1404

Mistral 26

## T4 - Hero

Category: T4

Material tipology: Wool

Fabric composition: 96% Wool | 4% Nylon

Performance: No outdoor use

Martindale: 45.000

Pilling: 3/4

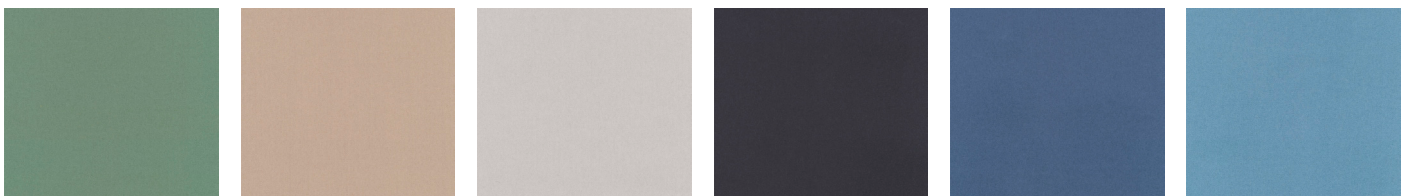
Height: 140

Weight: 580 gr/mtl

Lightfastness: 5/6

Washing: Do not wash with water | Do not bleach | Max temperature 150C

With perchloroethylene no trichloroethylene | Not tumble drying



Hero 931

Hero 311

Hero 211

Hero 791

Hero 751

Hero 711



Hero 101

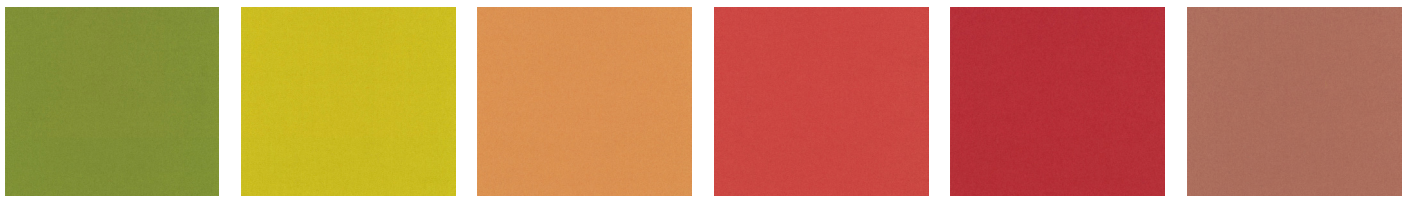
Hero 141

Hero 181

Hero 991

Hero 151

Hero 701



Hero 941

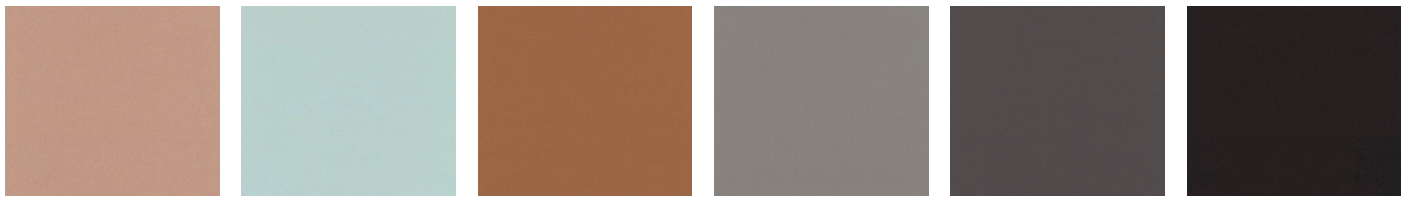
Hero 441

Hero 451

Hero 551

Hero 681

Hero 541



Hero 511

Hero 901

Hero 481

Hero 231

Hero 381

Hero 191

## T4 - Steelcut 2

Category: T4

Material tipology: Wool

Fabric composition: 90% Wool | 10% Nylon

Performance: No outdoor use

Martindale: 80.000

Pilling: 3/4

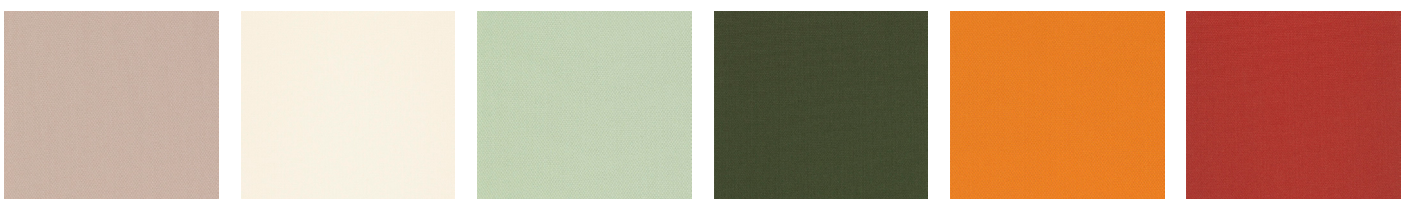
Height: 140

Weight: 825 gr/mtl

Lightfastness: 6/7

Washing: Do not wash with water | Do not bleach | Max temperature 150C

With perchloroethylene no trichloroethylene | Not tumble drying



Steelcut 2 605

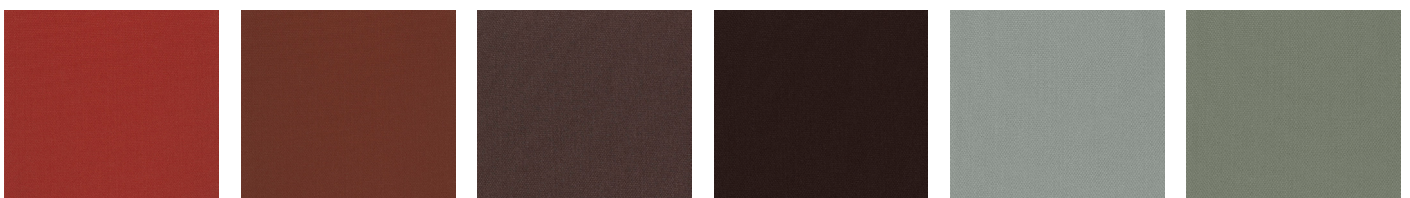
Steelcut 2 110

Steelcut 2 935

Steelcut 2 975

Steelcut 2 535

Steelcut 2 660



Steelcut 2 615

Steelcut 2 655

Steelcut 2 695

Steelcut 2 380

Steelcut 2 155

Steelcut 2 160

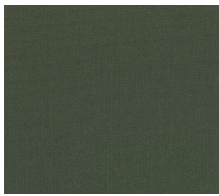
twentytwentyone

Shop: 274-275 Upper Street London N1 2UA

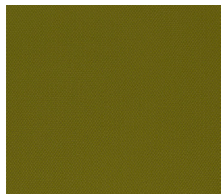
0207 288 1996

Showroom: 18c River Street London EC1R 1XN

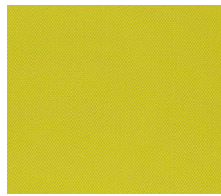
0207 837 1900



Steelcut 2 180



Steelcut 2 985



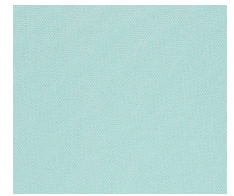
Steelcut 2 435



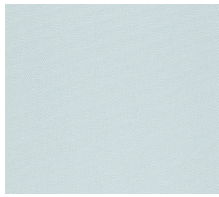
Steelcut 2 775



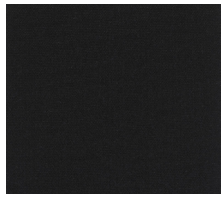
Steelcut 2 780



Steelcut 2 820



Steelcut 2 120



Steelcut 2 190

## T4 - Swing

Category: T4

Material tipology: Synthetic

Fabric composition: 100% PL Trevira CS

Performance: No outdoor use

Martindale: 100.000

Pilling: 5

Lightfastness: 5/6

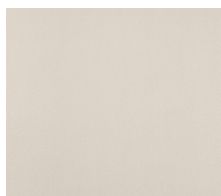
Dimensional variation to dry cleaning: -2,00%

Washing: Machine cycle DELICATE maximum temperature 30C | Do not bleach

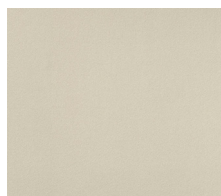
Reverse ironing | Not tumble drying | Do not centrifuge



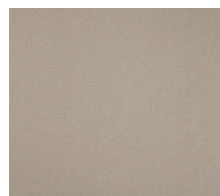
Swing 21



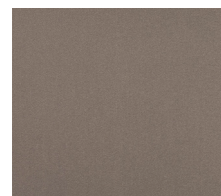
Swing 36



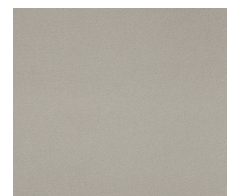
Swing 35



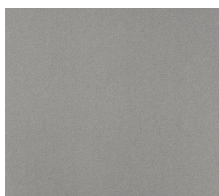
Swing 34



Swing 30



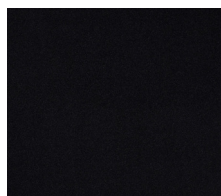
Swing 38



Swing 25



Swing 26



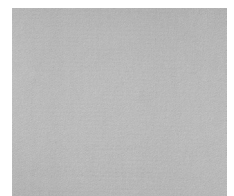
Swing 27



Swing 22

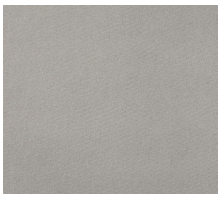


Swing 32

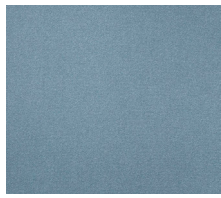


Swing 23

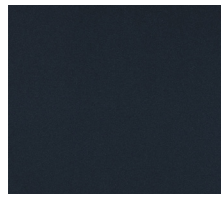




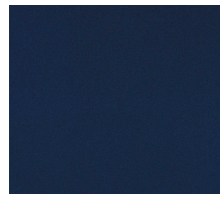
Swing 24



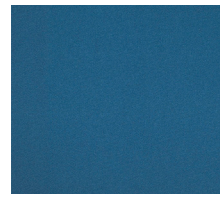
Swing 02



Swing 04



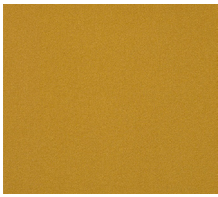
Swing 03



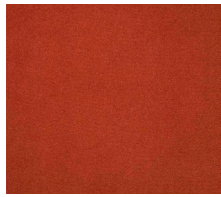
Swing 28



Swing 15



Swing 14



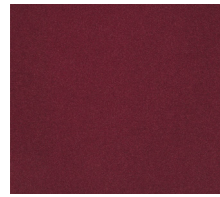
Swing 06



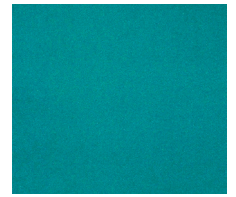
Swing 11



Swing 20



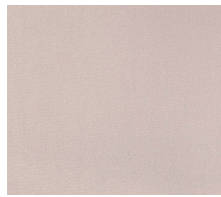
Swing 12



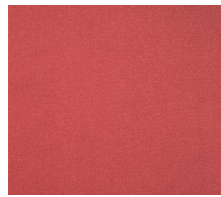
Swing 05



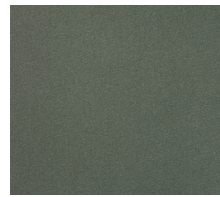
Swing 33



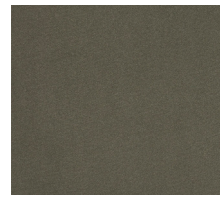
Swing 16



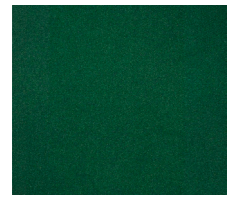
Swing 13



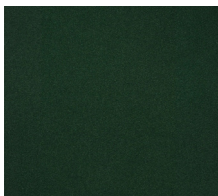
Swing 18



Swing 19



Swing 08



Swing 07



Swing 31

## T4 - Lucky

Category: T4

Material tipology: Synthetic

Fabric composition: 100% PL Trevira CS

Performance: No outdoor use

Martindale: 50.000

Pilling: 4/5

Height: 135

Weight: 621 gr/mtl

Lightfastness: 4/5

Dimensional variations to water washings: -1,3%

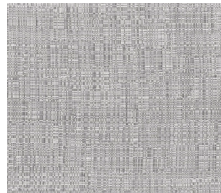
Washing: Machine cycle DELICATE maximum temperature 30C | DELICATE maximum temperature 110C | With perchloroethylene no trichloroethylene



Lucky 13



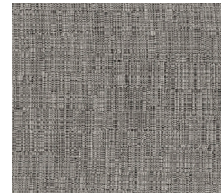
Lucky 01



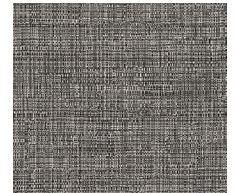
Lucky 02



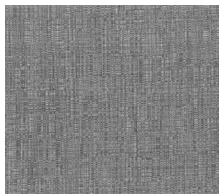
Lucky 06



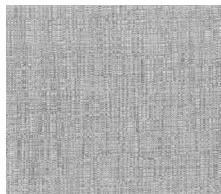
Lucky 07



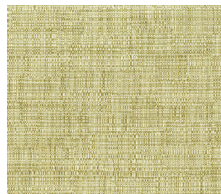
Lucky 05



Lucky 04



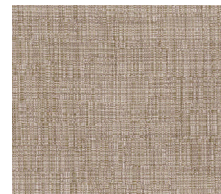
Lucky 03



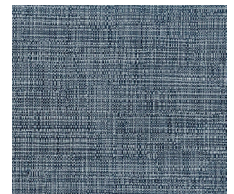
Lucky 12



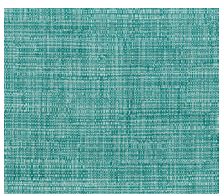
Lucky 08



Lucky 09



Lucky 14



Lucky 11



Lucky 10

## T4 - Orbaco

Category: T4

Material typology: Viscose

Fabric composition: 33% Acrylic | 4% Cotton | 17% Wool | 4% Linen | 8% Polyester | 34% Viscose

Performance: No outdoor use

Martindale: 50.000

Pilling: 4

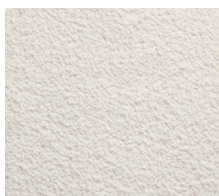
Height: 140

Weight: 1316 gr/mtl

Lightfastness: 5

Washing: Do not wash with water | Do not bleach | DELICATE maximum temperature 110C

With perchloroethylene no trichloroethylene | Not tumble drying | Do not centrifuge



Orbaco 1



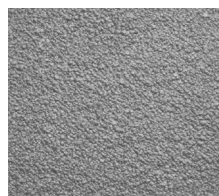
Orbaco 2



Orbaco 10



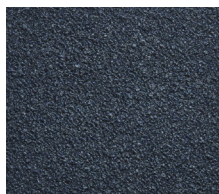
Orbaco 12



Orbaco 22



Orbaco 21



Orbaco 20

## T5 - Divina MD

Category: T5

Material tipology: Wool

Fabric composition: 100% Wool

Performance: No outdoor use

Martindale: 45.000

Pilling: 3

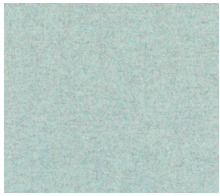
Height: 150

Weight: 840 gr/mtl

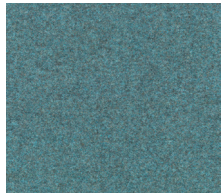
Lightfastness: 6

Washing: Do not wash with water | Do not bleach | Max temperature 150C

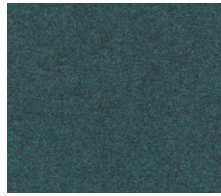
With perchloroethylene no trichloroethylene | Not tumble drying



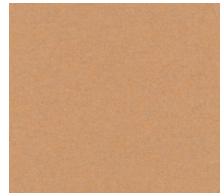
Divina MD 813



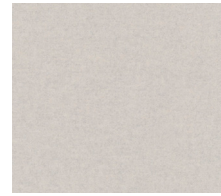
Divina MD 843



Divina MD 873



Divina MD 433



Divina MD 213



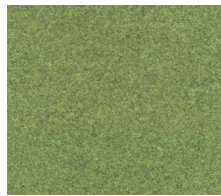
Divina MD 203



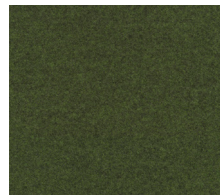
Divina MD 363



Divina MD 913



Divina MD 943



Divina MD 973



Divina MD 343



Divina MD 353



Divina MD 613



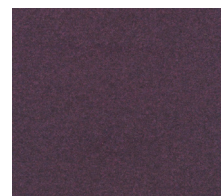
Divina MD 653



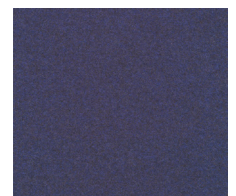
Divina MD 633



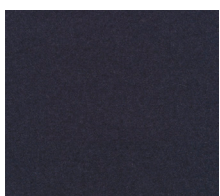
Divina MD 673



Divina MD 683



Divina MD 773



Divina MD 783



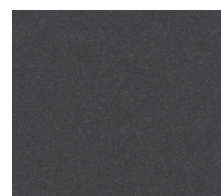
Divina MD 743



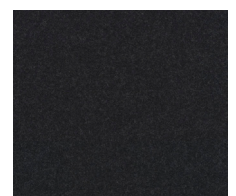
Divina MD 733



Divina MD 713



Divina MD 293



Divina MD 193

twentytwentyone

Shop: 274-275 Upper Street London N1 2UA

0207 288 1996

Showroom: 18c River Street London EC1R 1XN

0207 837 1900

## T5 - Bridge

Category: T5

Material typology: Viscose

Fabric composition: 4% Acrylic | 20% Cotton | 34% Linen | 7% Polyester | 35% Viscose

Performance: No outdoor use

Martindale: 40.000

Pilling: 3

Height: 140

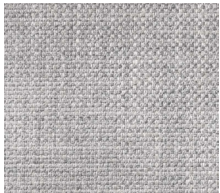
Weight: 965 gr/mtl

Lightfastness: 6

Dimensional variation to dry cleaning: -2,00%

Washing: Do not wash with water | Do not bleach | DELICATE maximum temperature 110C

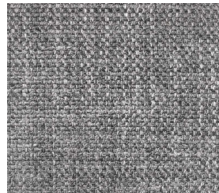
With perchloroethylene no trichloroethylene | Not tumble drying | Do not centrifuge



Bridge 03



Bridge 08



Bridge 02



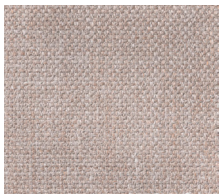
Bridge 01



Bridge 04



Bridge 05



Bridge 06



Bridge 07

## Category N leather - Ambra

Category: N

Material tipology: Full grain leather

Dyeing: Aniline

Tanning: Chrome

Performance: No outdoor use



Ambra 13



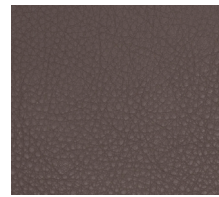
Ambra 1



Ambra 7



Ambra 8



Ambra 10



Ambra 11



Ambra 17



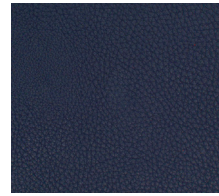
Ambra 3



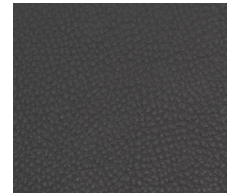
Ambra 5



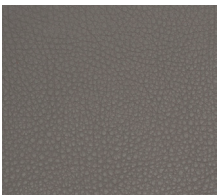
Ambra 4



Ambra 16



Ambra 12



Ambra 9

## Category Super leather - Ametista

Category: Super

Material tipology: Nubuck

Dyeing: Aniline

Tanning: Chrome

Performance: No outdoor use



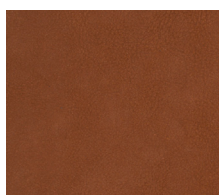
Ametista 2



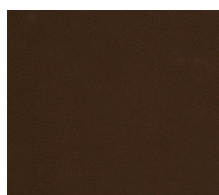
Ametista 1



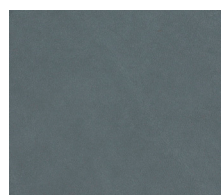
Ametista 5



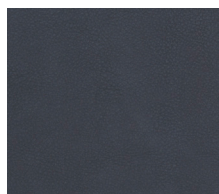
Ametista 4



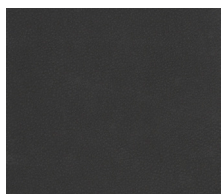
Ametista 3



Ametista 6



Ametista 7



Ametista 8



Ametista 9

## Category Super leather - Perla

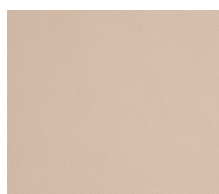
Category: Super

Material tipology: Full grain leather

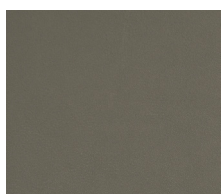
Dyeing: Aniline

Tanning: Chrome

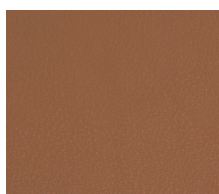
Performance: No outdoor use



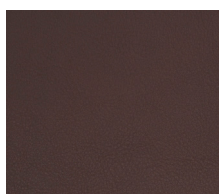
Perla 5



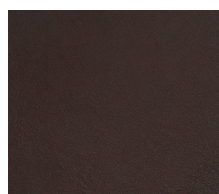
Perla 4



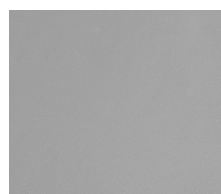
Perla 1



Perla 2



Perla 3



Perla 9

twentytwentyone

Shop: 274-275 Upper Street London N1 2UA

0207 288 1996

Showroom: 18c River Street London EC1R 1XN

0207 837 1900



Perla 10



Perla 7