

TOM KIRK LIGHTING



Cintola Maxi Pendant

Deco inspired and hand-finished, the Cintola Maxi is a stand-out feature luminaire. Just like the Cintola Pendant, the Maxi Pendant comes in seven different colours to complement your interior scheme. The complex body is CNC machined and available in polished aluminium, satin gold or satin bronze. Alternative finishes can be supplied on request.

Lamp Specifications UK
220-240v 50Hz 18 x 3w G9 LED

Lamp Specifications USA
120v 60Hz 18 x 4.5w G9
Type T LED

Product Weight
10KG / 22lb

Dimmable
Yes

Level of Protection
IP20

Luminous flux / CCT
UK – 4500 Lumens 2700K
US – 7200 Lumens 3000K

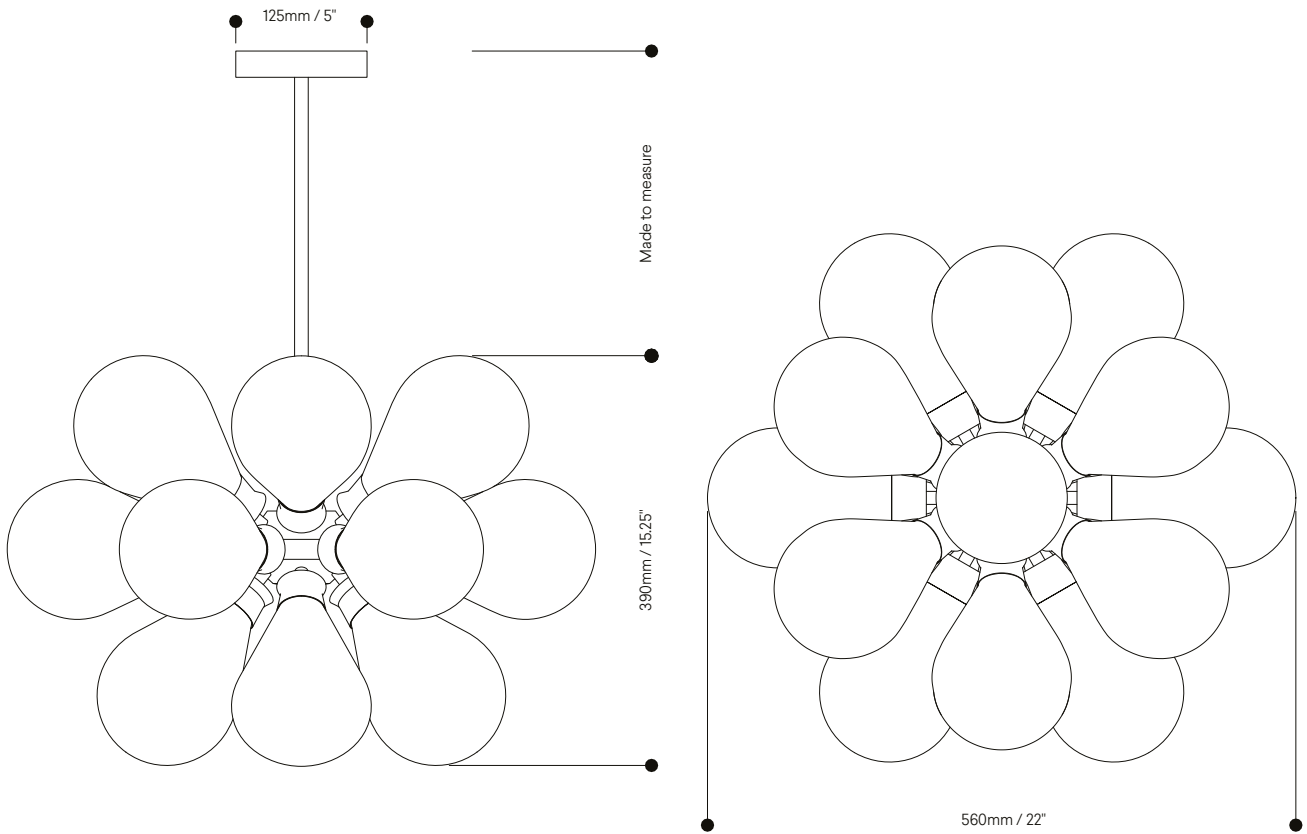
Materials
Hand-blown glass and anodised
or polished aluminium

Standards



Cintola Maxi Pendant

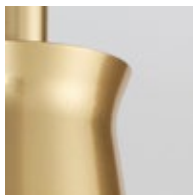
TOM — KIRK LIGHTING



Metal Finishes



Polished aluminium



Satin gold



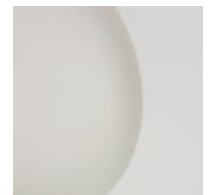
Amber



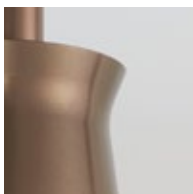
Turquoise



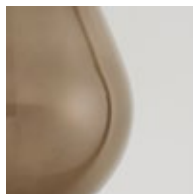
Olive



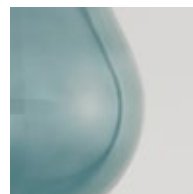
Frosted



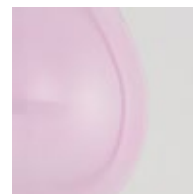
Satin bronze



Bronze



Smoke grey



Rose

Glass Colours