

Slender Wool Fabrics

The group of slender wool fabrics are perfect for sleek shapes and relatively easy to clean. The natural properties of wool intrinsic to this group boast an amazing array of features. Wool is naturally flame retardant and soil resistant. It is very comfortable because it absorbs humidity without causing it to feel moist. It also tempers the body.

CANVAS, FAME, FIORD, REMIX, CAPTURE, RE-WOOL

Calmo 1-Seater by Hugo Passos.
Fabric: Fiord, 391.



CANVAS

Fabric Group 2

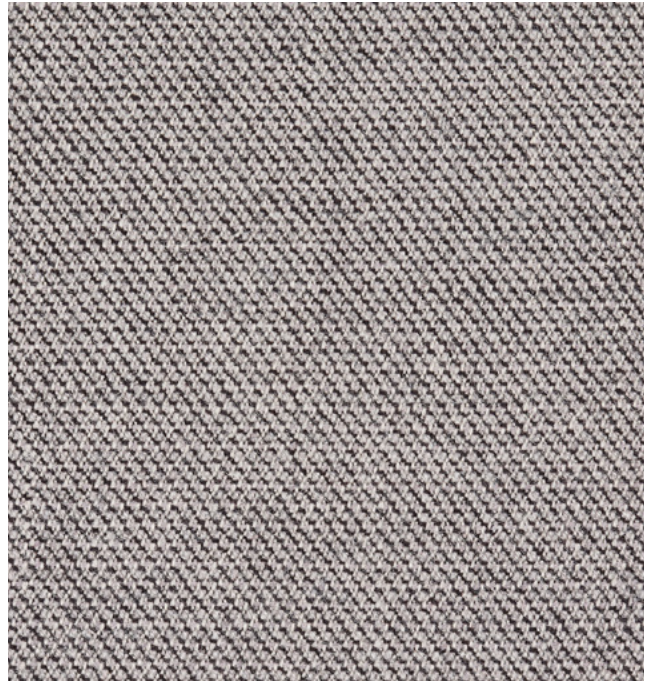


About	Flat wool textile with subtle striped texture. Large scale of colour blends.
Composition	90% wool, 10% polyamide
Martindale	100.000
Environment	EU Ecolabel
Flame resistance	AS/NZS 1530.3, BS 5852 part 1, EN 1021-1/2, IMO FTP Code 2010 Part 8, NF D 60 013, NFPA 260, SN 198 898 5.3 with treatment, UNI 9175 1IM, US Cal. Bull. 117-2013, ÖNORM B1/ Q1, BS 5852 ignition source 3, BS 5852 Crib 5
Pilling	4
Lightfastness	6
More info	kvadrat.dk
Total no of colours	46



CAPTURE

Fabric Group 1

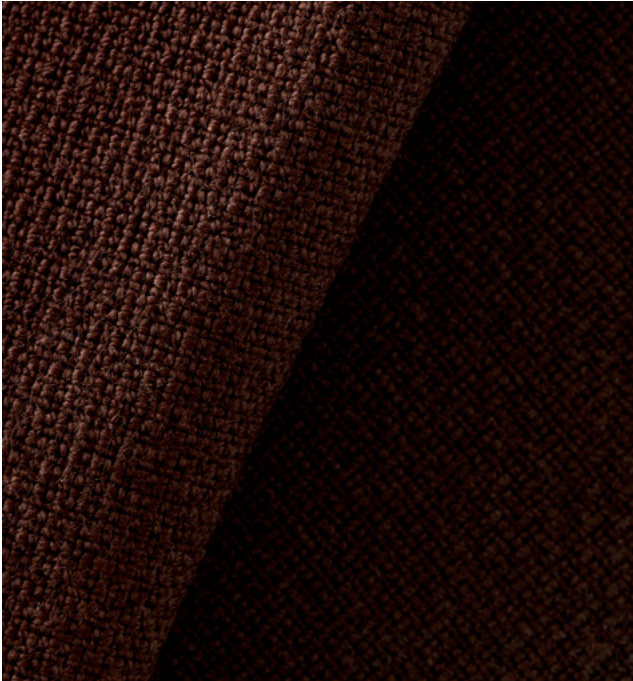


About	Capture is a lightly felted and multi-coloured wool fabric in a casual yet sophisticated tweed look..
Composition	85% New Zealand wool, 15% polyamide
Martindale	100.000
Environment	STANDARD 100 by OEKO-TEX®, EU Ecolabel
Flame resistance	BS EN 1021 1&2 Cigarette and Match, BS 5852 Part 1 0,1 Cigarette & match, Class Uno UNI 9175 Class 1 I EMME CA TB 117-2013
Pilling	4-5
Lightfastness	5-7
More info	gabriel.dk
Total no of colours	25



FAME

Fabric Group 1



About	Classic flat woven wool fabric in monochrome colours Suitable for flat upholstery.
Composition	95% wool, 5% polyamide
Martindale	100.000
Environment	EU Ecolabel
Flame resistance	BS EN 1021-1 Cigarette, BS EN 1021-2 Match, BS 5852 Crib 5, CA TB 117-2013, Class Uno UNI 9175 Class 1 EMME, AM 18 - NF D 60-013, BS 5852 Part 1 0,1 Cigarette & match, ÖNORM B 3825-B1-3800-Q1 UK, IMO MSC 307(88) Annex 1 part 8, MED Certificate IMO, BS 476 Part 7, class 1
Pilling	4
Lightfastness	5-7
More info	gabriel.dk
Total no of colours	60



FIORD

Fabric Group 2



About	A soft, nubby surface and subtle colour blends wool fabric. Suitable for all upholstery.
Composition	92% wool, 8% polyamide
Martindale	60.000
Environment	EU Ecolabel
Flame resistance	BS 5852 Crib 5 with treatment, BS 5852 part 1, DIN 4102 B2, EN 1021-1/2, IMO FTP Code 2010 Part 8, NF D 60 013 UNI 9175 11M, US Cal. Bull. 117-2013, AS/NZS 3837, class 2 SN 198 898 5.3 with treatment
Pilling	4-5
Lightfastness	6
More info	kvadrat.dk
Total no of colours	27



REMIX

Fabric Group 1

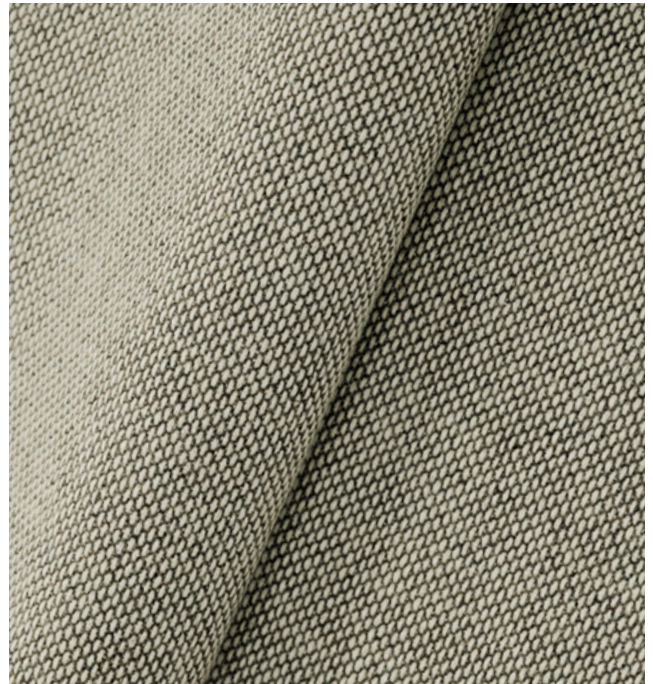


About	Flat wool textile with a large scale of colour blends.
Composition	90% wool, 10% polyamide
Martindale	100.000
Environment	EU Ecolabel
Flame resistance	AS/NZS 1530.3, AS/NZS 3837, class 2, BS 5852 part 1, EN 1021-1/2, IMO FTP Code 2010 Part 8, NF D 60 013, NFPA 260, UNI 9175 1IM, US Cal. Bull. 117-2013, ÖNORM B1/ Q1, BS 5852 Crib 5
Pilling	5
Lightfastness	5
More info	kvadrat.dk
Total no of colours	49



RE-WOOL

Fabric Group 2



About	Upholstery textile with a subtle yet visible woven structure and soft colourways enriched by sparks. Produced using 45% recycled wool from Kvadrat's English mills.
Composition	45% wool, 45% recycled wool, 10% polyamide
Martindale	50.000
Environment	EU Ecolabel
Flame resistance	AS/NZS 1530.3, BS 5852 Crib 5 with treatment, BS 5852 ignition source 3, BS 5852 part 1, EN 1021-1/2, IMO FTP Code 2010 Part 8, NF D 60 013, UNI 9175 1IM, US Cal. Bull. 117-2013, ÖNORM B1/ Q1
Pilling	4
Lightfastness	7
More info	kvadrat.dk
Total no of colours	21





Pato Office Chair by Welling/Ludvik.
Fabric: Rime 471 .

Full-bodied Wool Fabrics

You'll find that full-bodied wool fabrics are suitable for almost every upholstery purpose due to their mass and character. The natural properties of wool intrinsic to this group have a range of impressive features. Naturally flame retardant and soil resistant. It is very comfortable because it absorbs humidity without causing it to feel moist. It also tempers the body. When you combine the numerous natural properties of wool with the soft touch and delicate shine of vegetal-derived fibres, full-bodied wool fabrics are as practical to use as they are sophisticated.

DIVINA MELANGE, FUSE, HALLINGDAL, MOOD,
NOISE, STEELCUT TRIO, TONUS, VIDAR

Ditzel Lounge Chair by Nanna Ditzel.
Fabric: Hallingdal 103. Wood: Smoked Oak

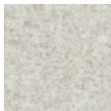


DIVINA MELANGE 3

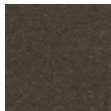
Fabric Group 3



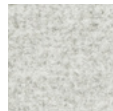
About	Classic wool felt used for furniture as well as clothing. Divina Melange 2 (melange yarns) are suitable for all upholstery. Domestic to moderate public use.
Composition	100% wool
Martindale	45.000
Environment	EU Ecolabel
Flame resistance	AS/NZS 1530.3, BS 5852 Crib 5, BS 5852 part 1, BS 5867 part 2 type B, EN 1021-1/2, EN 13501, C-s1, d0, glued, IMO FTP Code 2010 Part 8, NF D 60 013, NFPA 260, SN 198 898 5.3 with treatment, UNI 9175 1IM, US Cal. Bull. 117-2013, ÖNORM B1/ Q1, BS 5852 ignition source 3
Pilling	3
Lightfastness	6-7
More info	kvadrat.dk
Total no of colours	24



220
Light sand



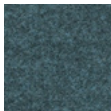
280
Dark brown



120
Cold grey



180
Charcoal



771
Dusty blue

FUSE

Fabric Group 5



About	Densely woven wool and cotton blend with a close pattern of ribbed stripes in which the weave creates rows of stitch-like patterning.
Composition	65% wool, 23% wool, 8% viscose, 4% polyamide
Martindale	100.000
Environment	Sustainable resource
Flame resistance	BS 5852 Crib 5, BS 5852 part 1, DIN 4102 B2, EN 1021-1/2, IMO FTP Code 2010 Part 8, NF D 60 013, UNI 9175 1IM, US Cal. Bull. 117-2013, ÖNORM B1/ Q1
Pilling	3-4
Lightfastness	7
More info	kvadrat.sims.com
Total no of colours	10



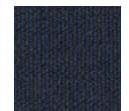
351
Clay



981
Ancient green



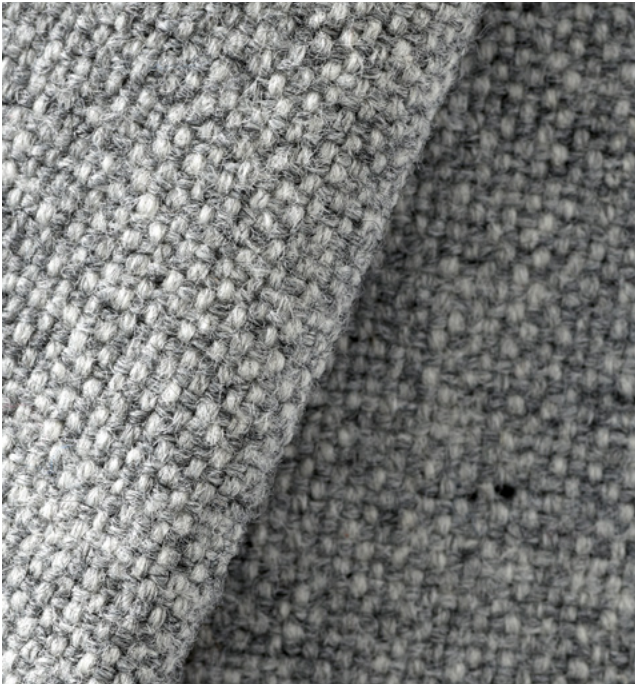
131
Cold grey



191
Navy blue

HALLINGDAL 65

Fabric Group 2



About	Classic wool-viscose blend with voluminous grip and a large scale of colour blends. Suitable for all upholstery. Designed by Nanna Ditzel in 1965.
Composition	70% wool, 30% viscose
Martindale	100.000
Environment	EU Ecolabel
Flame resistance	AS/NZS 1530.3, AS/NZS 3837, BS 5852 Crib 5, BS 5852 part 1, EN 1021-1/2, IMO FTP Code 2010 Part 8, NF D 60 013, NFPA 260, SN 198 898 5.3 with treatment, UNI 9175 1IM, US Cal. Bull. 117-2013, ÖNORM B1/ Q1, BS 5852 ignition source 3
Pilling	3
Lightfastness	7
More info	kvadrat.dk
Total no of colours	56



MOOD

Fabric Group 1

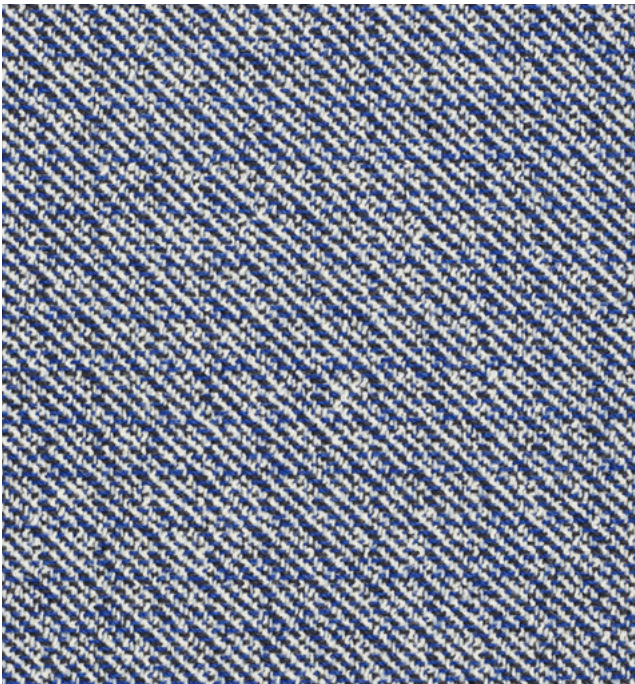


About	Wool fabric with a fluted surface structure. Natural and burnt colour shades.
Composition	92% wool, 8% polyamide
Martindale	90.000
Environment	EU Ecolabel
Flame resistance	BS EN 1021-2 Match, BS EN 1021-1 Cigarette, BS 5852 Part 1 0,1 Cigarette & match, BS 476 Part 7, class 1, Class Uno UNI 9175 Class 1 EMME, CA TB 117-2013
Pilling	4
Lightfastness	5-7
More info	gabriel.dk
Total no of colours	31

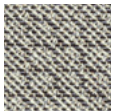


NOISE

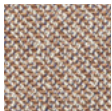
Fabric Group 5



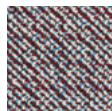
About	Wool blend in which strong diagonal stripes are broken up by flecks of sharp or neutral colours.
Composition	96% wool, 4% polyamide
Martindale	30.000
Environment	EU Ecolabel
Flame resistance	BS 5852 part 1, DIN 4102 B2, EN 1021-1/2, IMO FTP Code, 2010 Part 8, NF D 60 013, UNI 9175 1IM, US Cal. Bull. 117-2013, BS 5852 Crib 5 with treatment
Pilling	4
Lightfastness	6-7
More info	kvadratraftsimons.com
Total no of colours	10



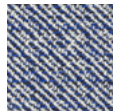
132
Clay



222
Camel



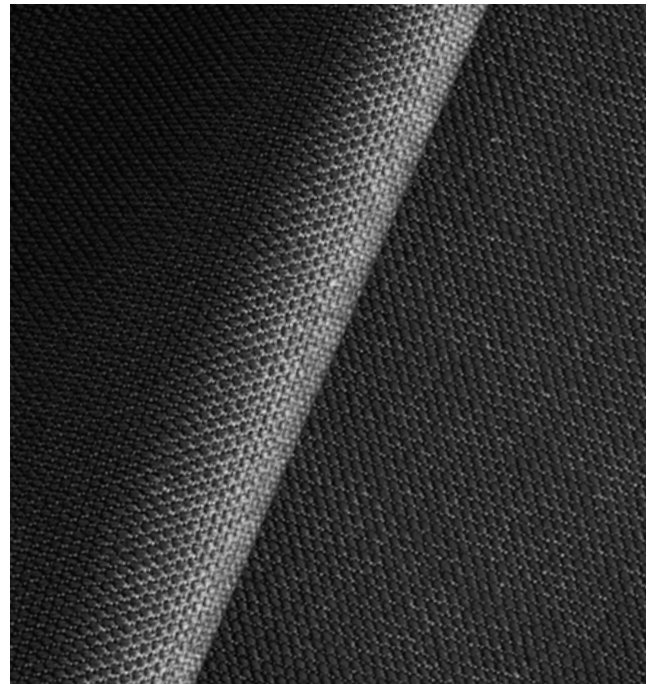
852
Deep red



742
Navy blue

STEELCUT TRIO 3

Fabric Group 2



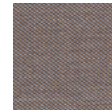
About	Tightly woven wool textile in three-colour mix.
Composition	90% wool, 10% polyamide
Martindale	100.000
Environment	EU Ecolabel
Flame resistance	AS/NZS 3837, class 2, BS 5852 part 1, EN 1021-1/2, IMO FTP Code 2010 Part 8, NF D 60 013, NFPA 260, SN 198 898 5.3 with treatment, UNI 9175 1IM, US Cal. Bull. 117-2013 ÖNORM B1/ Q1, BS 5852 Crib 5 with treatment, AS/NZS 1530.3, BS 5852 ignition source 3
Pilling	4
Lightfastness	5
More info	kvadrat.dk
Total no of colours	54



213
Light sand



235
Camel



376
Clay



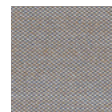
383
Dark brown



113
Cold grey



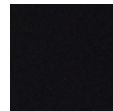
466
Cognac



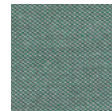
266
Clay



756
Dusty blue



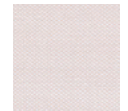
195
Navy blue



996
Ancient green



916
Ancient green



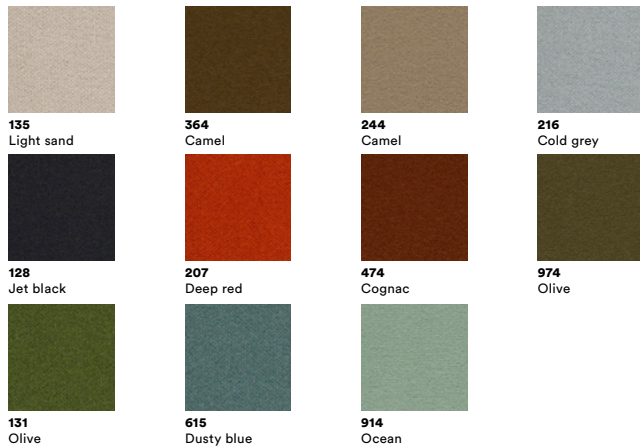
226
Powder nude

TONUS 4

Fabric Group 2

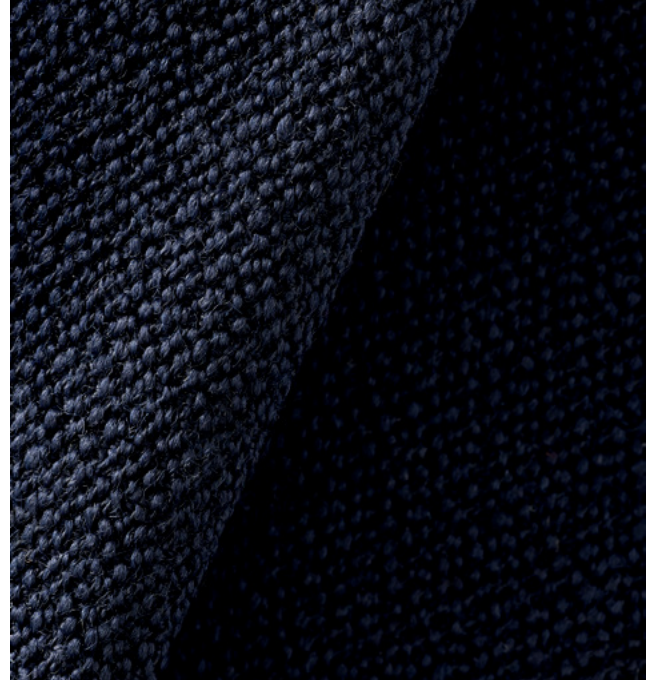


About	Classic plain-weave wool fabric with a comfortable soft touch and luxurious density.
Composition	90% wool, 10% helanca
Martindale	100.000
Environment	EU Ecolabel
Flame resistance	AS/NZS 1530.3, BS 5852 part 1, EN 1021-1/2, IMO FTP Code 2010 Part 8, NF D 60 013, NFPA 260, SN 198 898 5.3 with treatment, UNI 9175 1IM, US Cal. Bull. 117-2013, ÖNORM B1/ Q1, BS 5852 Crib
Pilling	3
Lightfastness	6-7
More info	kvadrat.dk
Total no of colours	47



VIDAR 3

Fabric Group 3



About	Elegant tightly woven wool textile with a matt, harmonious surface and a beautiful crepe texture.
Composition	94% wool, 6% polyamide
Martindale	100.000
Environment	EU Ecolabel
Flame resistance	DIN 4102 B2, EN 1021-1/2, IMO FTP Code 2010 Part 8, NF D 60 013, UNI 9175 1IM, US Cal. Bull. 117-2013, BS 5852 part 1, NFPA 260, BS 5852 Crib 5
Pilling	4
Lightfastness	5-6
More info	kvadrat.dk
Total no of colours	31



Linen and Soft Unions

Cotton and linen fibres make exceptionally soft and skin-friendly fabrics. Whilst some of the fabrics in this group are combined with a percentage of wool, the result is a more durable fabric that's easier to maintain. As opposed to most soft union fabrics that must be kept well in order to keep their appearance. The vegetal fibres are especially suitable for damp climates, since they tend to have a cooling effect due to their breathability and ability to absorb humidity.

AGUILIA, CLAY, LINARA, RUSKIN,
SUNNIVA, SINEQUANON

Calmo Sofa by Hugo Passo.
Fabric: Ruskin 10.



AGUILA

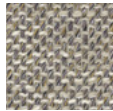
Fabric Group 2



About	Viscose- and cotton union with an outspoken woven structure that creates an Italian flair. Made in Italy and supplied directly to Fredericia.
Composition	60% viskose, 20% bomuld, 17% polyester, 3% linen
Martindale	90.000
Environment	Oeko-Tex
Flame resistance	BS 5852 : 2006 - Source 0, BS 5852 : 2006 - Source 1
Pilling	4
Lightfastness	5
More info	fredericia.com
Total no of colours	2



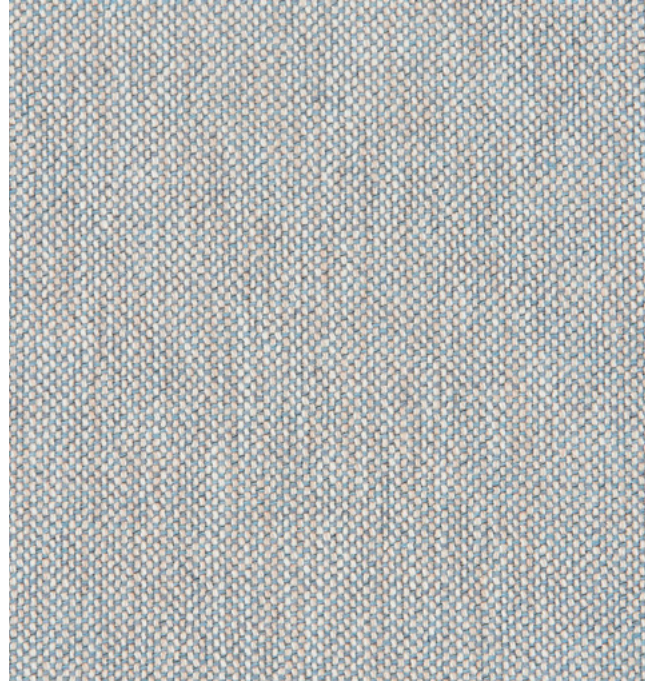
201
Light sand



210
Light sand

CLAY

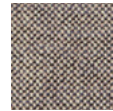
Fabric Group 1



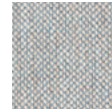
About	An elegant yet casual linen / cotton fabric with a structured two-toned surface. With a back cloth that gives extra stability, Clay is perfect for upholstering sofas.
Composition	76% Linen, 21% Cotton, 3% Polyester
Martindale	45.000
Environment	Complies with REACH regulation
Flame resistance	BS 5852 source 0/1 EN 1021-1/2
Pilling	4
Lightfastness	5
More info	sahco.com
Total no of colours	17



0011
Light sand



0009
Clay



0003
Cold grey



0017
Olive

LINARA

Fabric Group 1



About	Cotton-linen blend with a brushed finish and a soft, peach-skin feel. Very versatile plain for soft upholstery.
Composition	63% Cotton, 37% Linen
Martindale	36,000
Flame resistance	BS 5852 PART 1 IGN 0 CIGARETTE, BS 5852 Part 1 Exempt (With IGN 5 Interliner), EN1021 Part 1 Upholstery, NFPA260, CAL117
Lightfastness	5
More info	romo.com
Total no of colours	40



RUSKIN

Fabric Group 1



About	Soft and elegant textile combining viscose and linen creating motion and depth in the colourways. Discrete yet visible surface structure.
Composition	70% viscose, 15% linen, 10% wool, 5% polyamide
Martindale	60.000
Environment	EU Ecolabel
Flame resistance	Bs 5852 Part 1 Ign 0, Bs 5852 Part 1 Ign 1 With Treatment, Bs 5852 Part 1 Exempt, Bs 5852 Part 2 Ign 5 Crib Contract Upholstery With Treatment
Lightfastness	5
More info	romo.com
Total no of colours	40



SUNNIVA 2

Fabric Group 2



About	Wool/viscose/linen mix with a classic look and natural shine. Natural and subtle colourways.
Composition	58% wool, 25% viscose, 8% linen, 5% polyamide, 4% polyester
Martindale	50.000
Environment	Greenguard
Flame resistance	BS 5852 part 1, ig. s. 0, EN 1021-1/2, US Cal. Bull. 117-2013 NFPA 260, IMO FTP Code 2010 Part 8, AS/NZS 3837, class 2, BS 5852 Crib 5 with treatment
Pilling	3
Lightfastness	5-6
More info	kvadrat.dk
Total no of colours	24



SINEQUANON

Fabric Group 3



About	Linen-viskose union with yarns in two-tone, creating a sophisticated colour range with a subtle shine. Comes with waterrepellent treatment which offers specific protection from liquids and oils. Not suitable for hard public use.
Application	A B C D E
Composition	60% viscose, 16% linen, 13% cotton, 6% polyacrylic, 5% polyester
Martindale	35.000
Flame resistance	BS 5852 PART 1 IGN 0 CIGARETTE, BS 5852 PART 1 IGN 1 MATCH
More info	dedar.com
Total no of colours	36



Calmo Sofa by Hugo Passo.
Fabric: Ruskin 10.



Bouclé

Given the three-dimensional surface texture, bouclé adds depth and a lush sense of luxury to any furniture or design. Primarily composed of wool, the fabrics in this group are naturally flame retardant and soil resistant. The bouclés vary from heavy and plush to more slender bouclé, where the binding adds vibrancy to tight upholsteries.

CARLOTTO, PILOT

Swoon Chair by Space Copenhagen
Fabric: Carlotto 200.

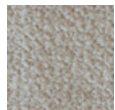


CARLOTTO

Fabric Group 2



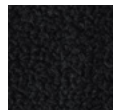
About	Voluminous wool bouclé with a very soft surface and structure. High wear resistance and suitable for both private and public use. Made in Italy and supplied directly to Fredericia.
Composition	38% wool, 37% polyacrylic, 18% polyester, 7% cotton
Martindale	100.000
Environment	Oeko-Tex
Flame resistance	BS 5852 : 2006 - Source 0, BS 5852 : 2006 - Source 1
Pilling	4
Lightfastness	4-5
More info	fredericia.com
Total no of colours	6



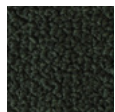
200
Light sand



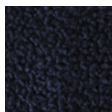
400
Dark brown



110
Jet black



900
Olive



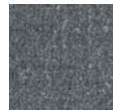
800
Navy blue

PILOT

Fabric Group 5



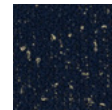
About	This bouclé fabric marries the softness and intense colour of merino wool to the lustre of contrasting yarns. Suitable for all upholstery.
Composition	82% wool, 10% polyester, 8% polyamide
Martindale	70.000
Environment	Greenguard
Flame resistance	BS 5852 part 1, DIN 4102 B2, EN 1021-1/2, IMO FTP Code 2010 Part 8, UNI 9175 1IM, US Cal. Bull. 117-2013, ÖNORM B1/ Q1, AS/NZS 3837, class 2, BS 5852 Crib 5
Pilling	4
Lightfastness	7
More info	kvadrat.dk
Total no of colours	10



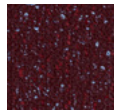
132
Cold grey



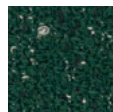
162
Charcoal



792
Navy blue



582
Dark red



972
Ancient green



Swoon Lounge Chair by Space Copenhagen.
Fabric: Carlotta 900

Velvets

Whether made of cotton or mohair wool, what all our velvets share is a soft touch and sense of sophistication. Not to mention their ability to exude depth and character in terms of colours.

The open pile characteristic of velvet makes it sensitive to dirt and vulnerable to showing indentations from transportation or usage. All velvets must be vacuumed and occasionally brushed or steamed to maintain their appearance over time.

BYRAM, GENTLE, GRAND MOHAIR, HARALD, SAVOY

Swoon Lounge Chair by Space Copenhagen.
Fabric: Harald, 242. Wood: Black lacquered



BYRAM

Fabric Group 5

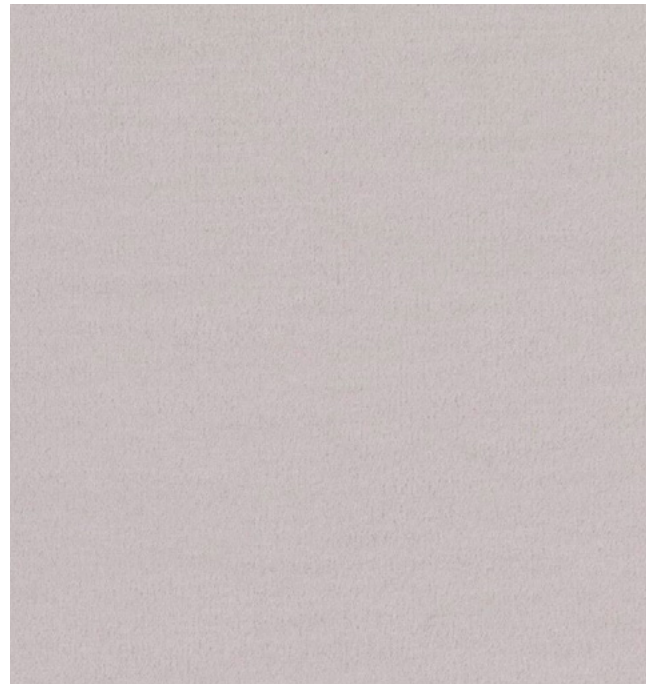


About	Mohair velor with a very close pile that gives a great color depth. Suitable for all upholstery, but not on prominent pipings.
Composition	65% wool, 23% cotton, 8% viscose, 4% polyamide
Martindale	70.000
Environment	Greenguard
Flame resistance	AS/NZS 1530.3, BS 5852 Crib 5, BS 5852 part 1, BS 5867 part 2 type B, EN 1021-1/2, IMO FTP Code 2010 Part 8, NF D 60 013, UNI 9175 1IM, US Cal. Bull. 117-2013, SN 198 898 5.3 with treatment
Pilling	4-5
Lightfastness	4
More info	kvadrat.dk
Total no of colours	19



GENTLE 2

Fabric Group 4



About	Innovative velvet on a knitted base, which makes it exceptionally suitable for certain curved upholstery. The surface and colour scale of this wool and polyamide union has a dry look, while keeping the vibrant colour options known from traditional velvets.
Composition	60% New wool, 20% Polyester, 20% Nylon
Martindale	90.000
Flame resistance	BS 5852 Part 1, DIN 4102 B2, EN 1021-1/2 IMO FTP Code 2010:Part 8 US Cal. Bull. 117-2013
Pilling	4-5
Lightfastness	6-7 (ISO 1-8)
More info	kvadrat.dk
Total no of colours	21

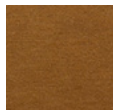


GRAND MOHAIR

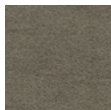
Fabric Group 4



About	Mohair velvet with a tight and elegant pile. Suitable for all upholstery except for dominant pipings.
Composition	100% mohair (pile), 100% cotton (base)
Martindale	+100.000 (Wyzenbeek)
Environment	Oeko-tex
Flame resistance	Cal 117-2013, NFPA 260, Class 1, BS 5852: 2006, clause 11, Crib 5, EN 1021, 1 & 2, IMO A. 652
Lightfastness	4-5
More info	daw.dk
Total no of colours	36



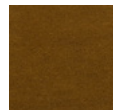
2001
Camel



9103
Olive



2103
Cognac



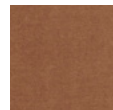
2600
Cognac

HARALD

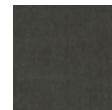
Fabric Group 2



About	Cotton velour with a tight pile. Velour can acquire press marks either from transport or in use. Suitable for domestic to moderate public use.
Composition	100% Cotton
Martindale	100.000
Environment	Greenguard
Flame resistance	EN 1021-1, AS/NZS 1530.3, AS/NZS 3837, class 1
Pilling	4-5
Lightfastness	5
More info	kvadrat.dk
Total no of colours	30



343
Camel



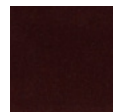
242
Clay



283
Dark brown



192
Jet black



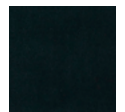
382
Deep red



182
Dusty blue



792
Royal blue



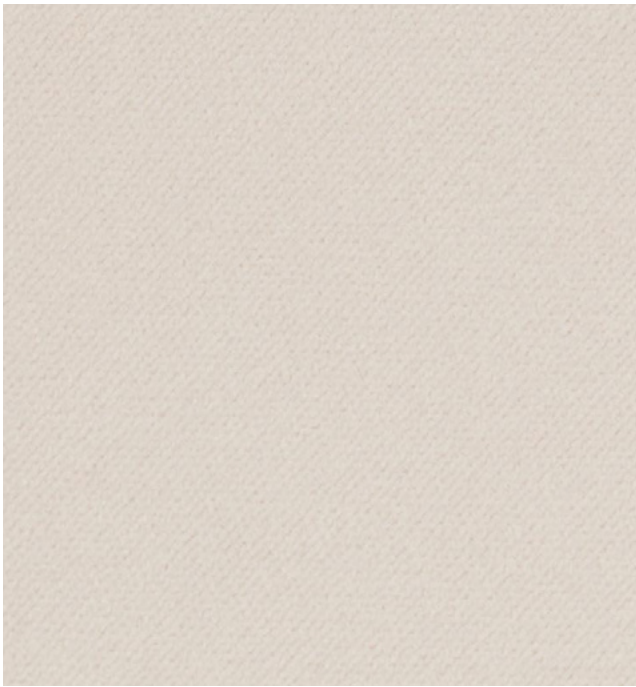
982
Ancient green



823
Ocean

SAVOY

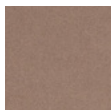
Fabric Group 2



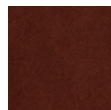
About	Savoy is a short pile velvet upholstery fabric made from high-performing, wear-resistant and flame-retardant Trevira CS polyester. It is suitable for residential as well as commercial interiors alike.
Composition	100% Trevira CS
Martindale	100.000
Environment	OEKO-TEX®
Flame resistance	BS EN 1021-1 Cigarette, BS EN 1021-2 Match, BS 5852 Part 1 0,1 Cigarette & match, BS 5852 Crib 5, DIN 4102 - B1, NFP 92-503/504/505 M1, AM 18 - NF D 60-013-(only for fabric), Class Uno UNI 9175 Class 1 I EMME, CA TB 117-2013
Pilling	5
Lightfastness	5-8
More info	gabriel.dk
Total no of colours	35



61222
Cognac



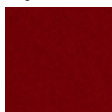
61217
Clay



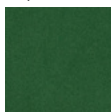
61223
Dark brown



60200
Jet black



64143
Deep red



68151
Ancient green

Swoon Lounge by Space Copenhagen.
Fabric: Grand Mohair 2001



Technical Fabrics

Light and versatile fabrics based on synthetic fibres, such as polyester, make these fabrics very durable. Easy to clean, a clever engineering of the different structures makes them both breathable and comfortable when used in furniture.

COMFORT, MERIT

COMFORT +

Fabric Group 3



About	Microfibre textile with a gentle surface and large colour scale. Anti-static and flame retardant backing.
Composition	88% polyester, 12% polyethane
Martindale	100.000
Environment	Oeko-Tex
Flame resistance	BS 5852 Part 1 0,1 Cigarette & match, BS EN 1021 1&2 Cigarette and Match, BS EN 1021-1 Cigarette, ÖNORM B 3825-B2-3800-Q1 UK, NF P 92-503 M3, CA TB 117-2013
Pilling	5
Lightfastness	5-7
More info	gabriel.dk
Total no of colours	77



MERIT

Fabric Group 2



About	Innovative textile made of 76% recycled polyester. Out-spoken yet harmonious surface structure in dual colours.
Composition	76% recycled polyester, 24% new polyester
Martindale	100.000
Environment	Greenguard Certification
Flame resistance	BS 476 part 7 + 6 with treatm, BS 5852 Crib 5 with treatment, BS 5852 part 1 with treatment, EN 1021-1/2, US Cal. Bull. 117-2013
Pilling	4
Lightfastness	7
More info	kvadrat.dk / maharam.com
Total no of colours	43





Calmo Sofa by Hugo Passos. Fabric: Ruskin 10.
Tableau Coffee Table by Space Copenhagen
Magazine Table by Jens Risom
The Spanish Chair by Børge Mogensen

