

Content

Flax 63%
Wool 29%
Nylon 5%
Cotton 3%

Lightfastness

ISO 5

Abrasion

100,000 rubs
Martindale method

Maintenance

Clean with solvent-based
cleaning agent



02TOS Beech



16TOS Moss



17TOS Atlantic



18TOS Denim



14TOS Ice



24TOS Chestnut



22TOS Carnelian



09TOS Anthracite

Content

Flax 44%
Cotton 22%
Acrylic 20%
Viscose 8%
Nylon 6%

Lightfastness

ISO 5

Abrasion

45,000 rubs
Martindale method

Maintenance

Clean with solvent-based
cleaning agent



991TES Beige



584TES Lagoon

Designed by Dorothy Cosonas

Content

Wool 38%
Cotton 28%
Acrylic 28%
Polyester 6%

Flame Resistance

California Technical
Bulletin 117
NFPA 260 (UFAC Class 1)
EN1021 1/2
British Standard 5852:
1990 Source 5 (crib 5)

Lightfastness

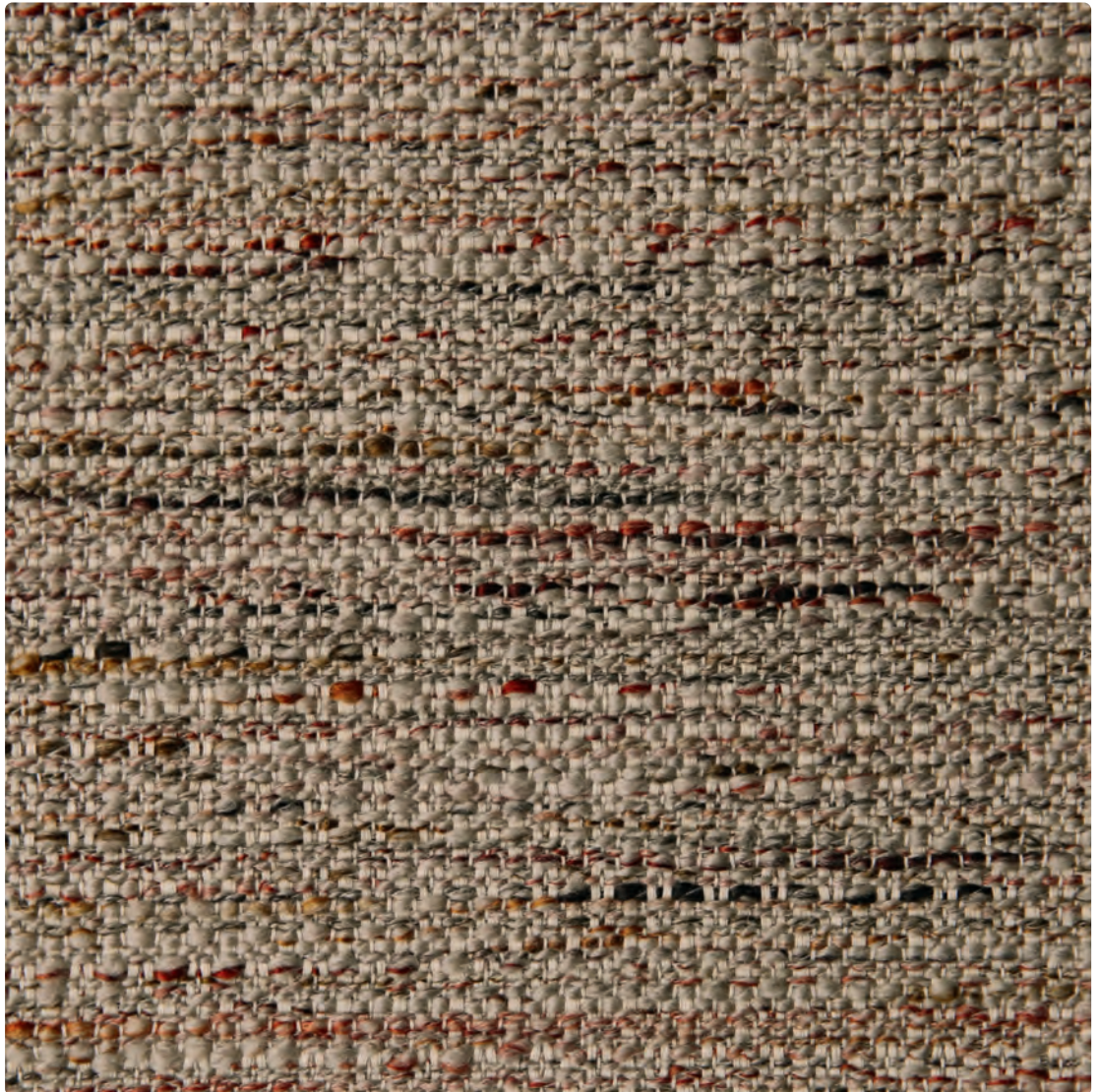
ISO 5

Abrasion

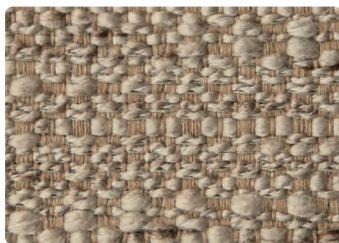
70,000 rubs
Martindale method

Maintenance

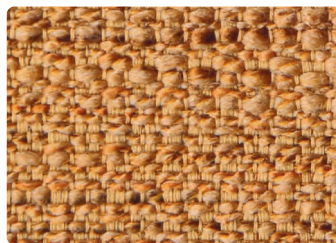
Clean with solvent-based
cleaning agent



K108010 Orchard



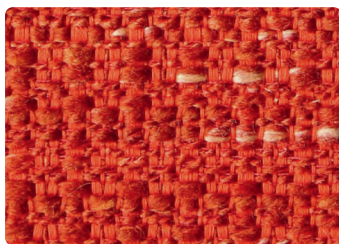
K10808 Parchment



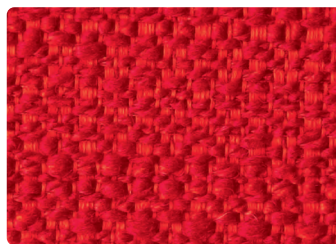
K10801 Sunflower



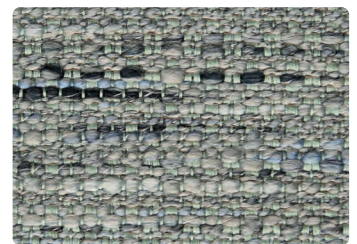
K108011 Lion



K10804 Paprika



K10805 Scarlet



K108013 Dragon

Content

Trevira CS 100%

Flame Resistance

UNI 9177 - Classe 1
 California TB 117:2013
 EN 1021-1&2
 BS 5852-Part 0-1 (C&M)
 IMO MSC 307(88)
 Annex 1 Part 7+8
 NF P 92-503-507 M1
 DIN 4102 B1
 UNI 9175 - 1.IM
 NFPA 260:2019

Lightfastness

ISO 5

Abrasion

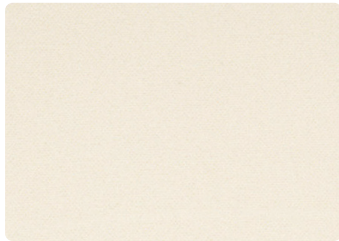
190,000 rubs
 Martindale method

Maintenance

Wet cleaning warp
 Shrinkage app. 2%



12MO Beige



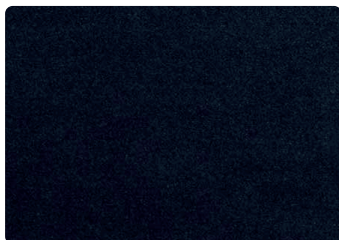
13MO Ivory



10MO Mustard



11MO Mink



04MO Dark Blue



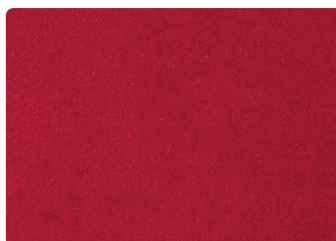
05MO Navy Blue



03MO Light Grey



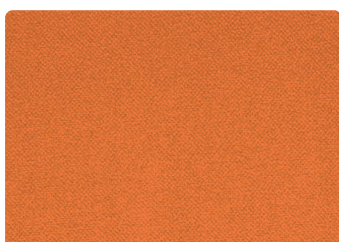
09MO Moss



08MO Dark Red



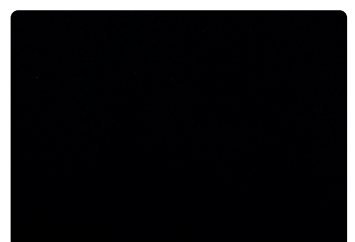
07MO Burgundy



06MO Orange



02MO Dark Grey



01MO Black

Please use this sample card as indicative, only. It is provided as a guide. There may be variations between this sample card and the real samples.

Designed by Dorothy Cosonas

Content

Wool 38%
Cotton 28%
Acrylic 28%
Polyester 6%

Flame Resistance

California Technical
Bulletin 117
NFPA 260 (UFAC Class 1)
EN1021 1/2
British Standard 5852:
1990 Source 5 (crib 5)

Lightfastness

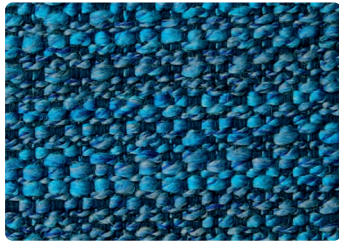
ISO 5

Abrasion

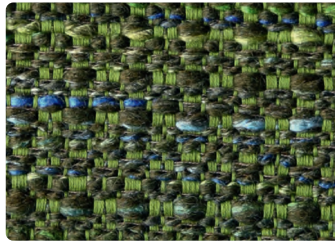
70,000 rubs
Martindale method

Maintenance

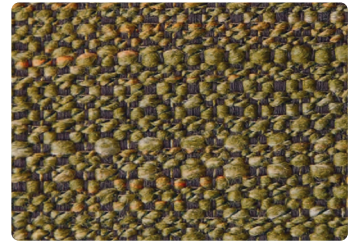
Clean with solvent-based
cleaning agent



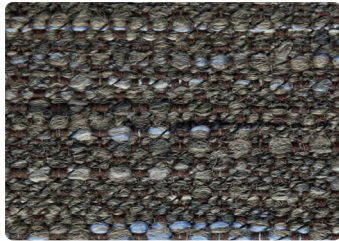
K10802 Sapphire



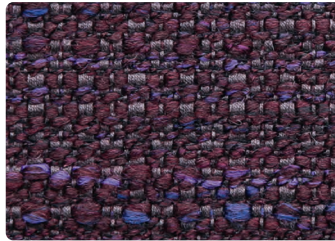
K108012 Palm



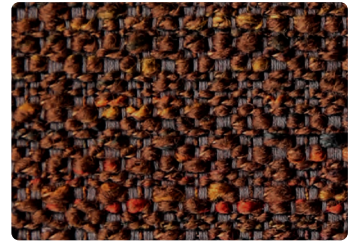
K10803 Spruce



K10809 Ash Gray



K10806 Aubergine



K10807 Bittersweet



K108014 Eclipse

Content

Fleece wool 96%
Nylon 4%

Lightfastness

ISO 5/8

Abrasion

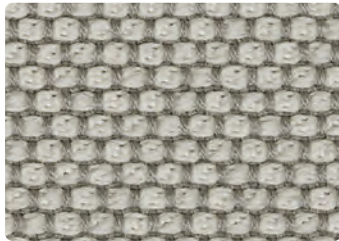
90,000 rubs
DIN EN ISO 12947-2

Maintenance

Clean with solvent-based
cleaning agent



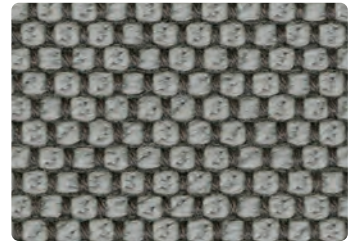
OP24 Calla



OP58 Macadamia



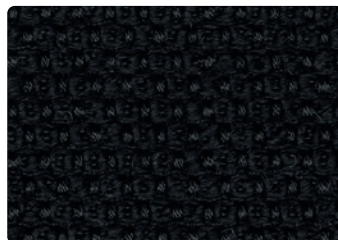
OP57 Flanell



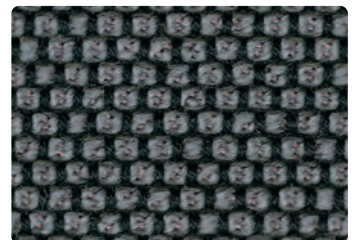
OP60 Fango



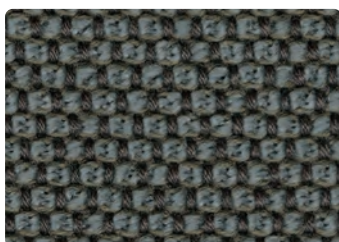
OP37 Pepper



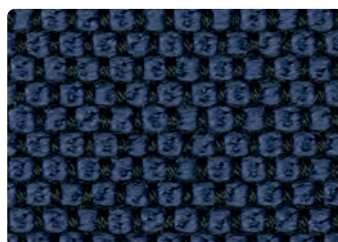
OP18 Ebony



OP54 Carbon



OP64 Prime



OP69 Delft



OP70 Navy



OP71 Indio

Content

Acetate 57%
Polyester 37%
Viscose 6%

Lightfastness

ISO 4/5

Abrasion

32,000 rubs
Martindale method

Maintenance

Clean with solvent-based
cleaning agent



001HER Ivory



003HER Light Taupe



021HER Powder



020HER Copper



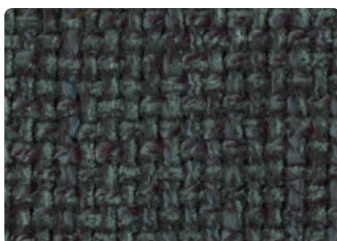
029HER Moss



031HER Gold



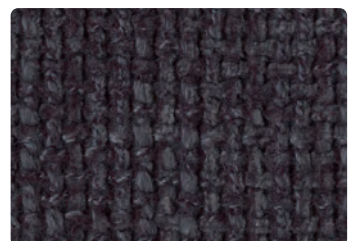
018HER Olive Green



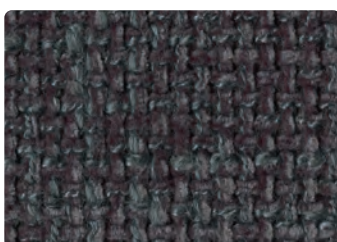
016HER Emerald Green



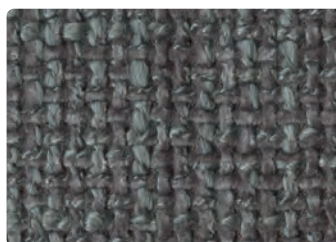
024HER Sky/Blue



023HER Night Blue



011HER Dark Grey



012HER Grey

Please use this sample card as indicative, only. It is provided as a guide. There may be variations between this sample card and the real samples.

Content

Cotton 52%
Viscose 22%
Acrylic 14%
Flax 6%
Nylon 3%
Polyester 3%

Lightfastness

ISO 4/5

Abrasion

50,000 rubs
Martindale method

Maintenance

Clean with solvent-based
cleaning agent



04HL Ivory



05HL Silver



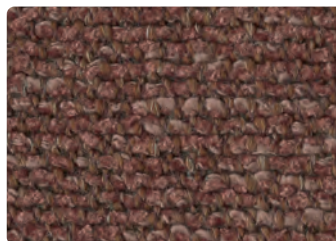
15HL Grey



07HL Dark Grey



13HL Brown/White



12HL Red Brick



03HL Green/White



01HL Olive



100



200



227



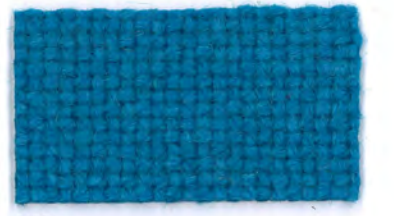
224



890



810



850



220



153



116



126



840



723



733



750



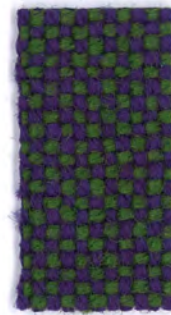
376



368



130



968



702



764



754



270



350



370



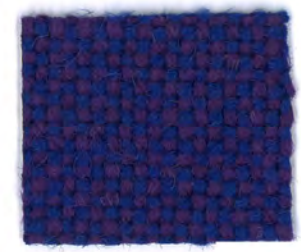
390



773



753



763



573



563



660



944



960



980



907



694



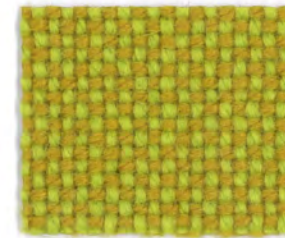
687



674



590



420



457



407



110



547



526



657



680



103



113



123



190



600



596



166



180



173



143



980



907



944



960



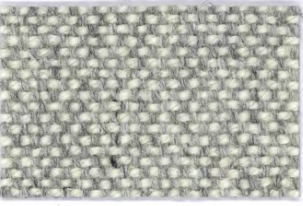
660



563



573



110



407



457



420



590



674



687



694



190



123



113



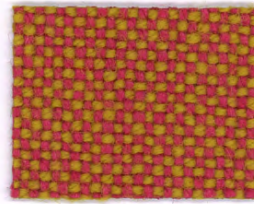
103



680



657



526



547



143



173



180



166

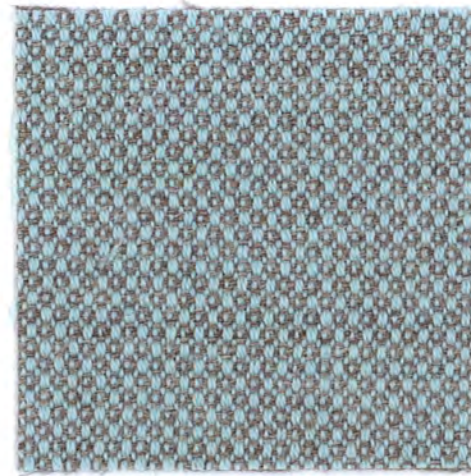


596



600

Fiord



821



251



451



121



551



521



721



101



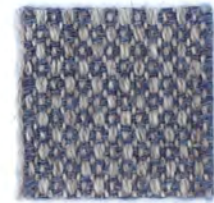
571



151



351



751



771



581



591



791



981



961



201



171



271



971



951



191



391



371



991

Content

Cotton 100%

Lightfastness

ISO 4/5

Abrasion

50,000 rubs
Martindale method

Maintenance

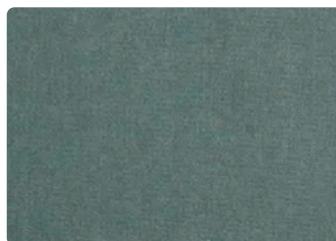
Clean with solvent-based
cleaning agent



171EVA Avio



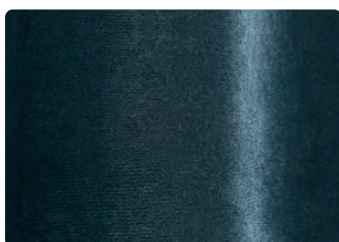
172EVA Steel



140EVA Sea Green



149EVA Ocean



170EVA Night Blue



125EVA Rose



177EVA Beige

Please use this sample card as indicative, only. It is provided as a guide. There may be variations between this sample card and the real samples.

Content

Cotton 100%

Lightfastness

ISO 4/5

Abrasion

50,000 rubs
Martindale method

Maintenance

Clean with solvent-based
cleaning agent



131EVA Dune



135EVA Clay



134EVA Ebony



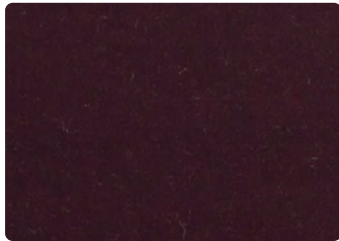
115EVA Saffron



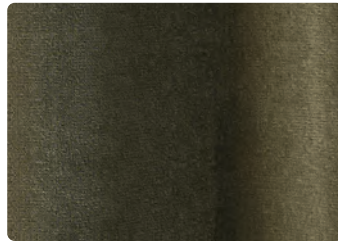
116EVA Cayenne



120EVA Wine



119EVA Plum



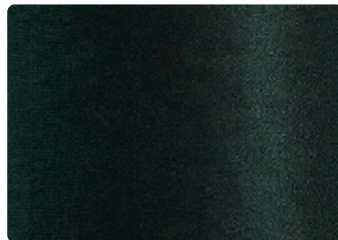
168EVA Mousse



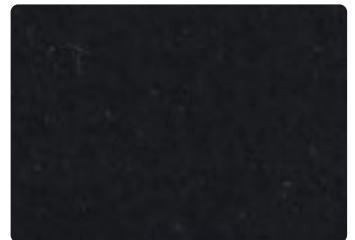
145EVA Olive



144EVA Bottle Green



169EVA Cactus



138EVA Black



756



742



712



686



782



944



984



791



846



856



793



886



876



893



936



922



826



836



956



966

Divina 3



684



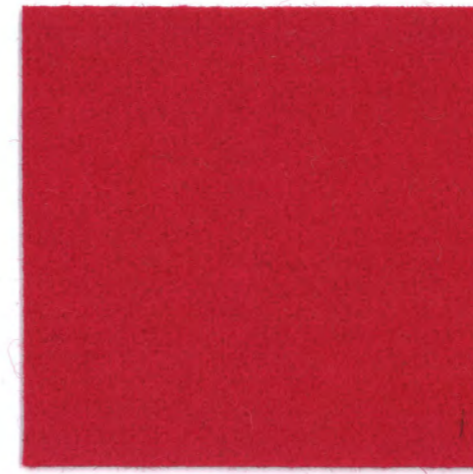
691



171



173



636



376



676



191



154



696



692



384



181



426



623



626



356



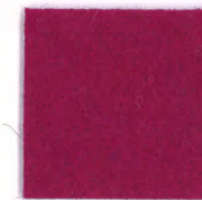
393



236



562



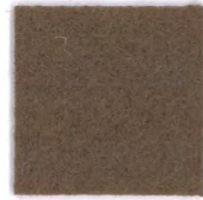
662



666



224



334



246



462



542



652



671



106



346



444



526



536



584



552

Content

New wool 95%
Polyamide 5%

Flame Resistance

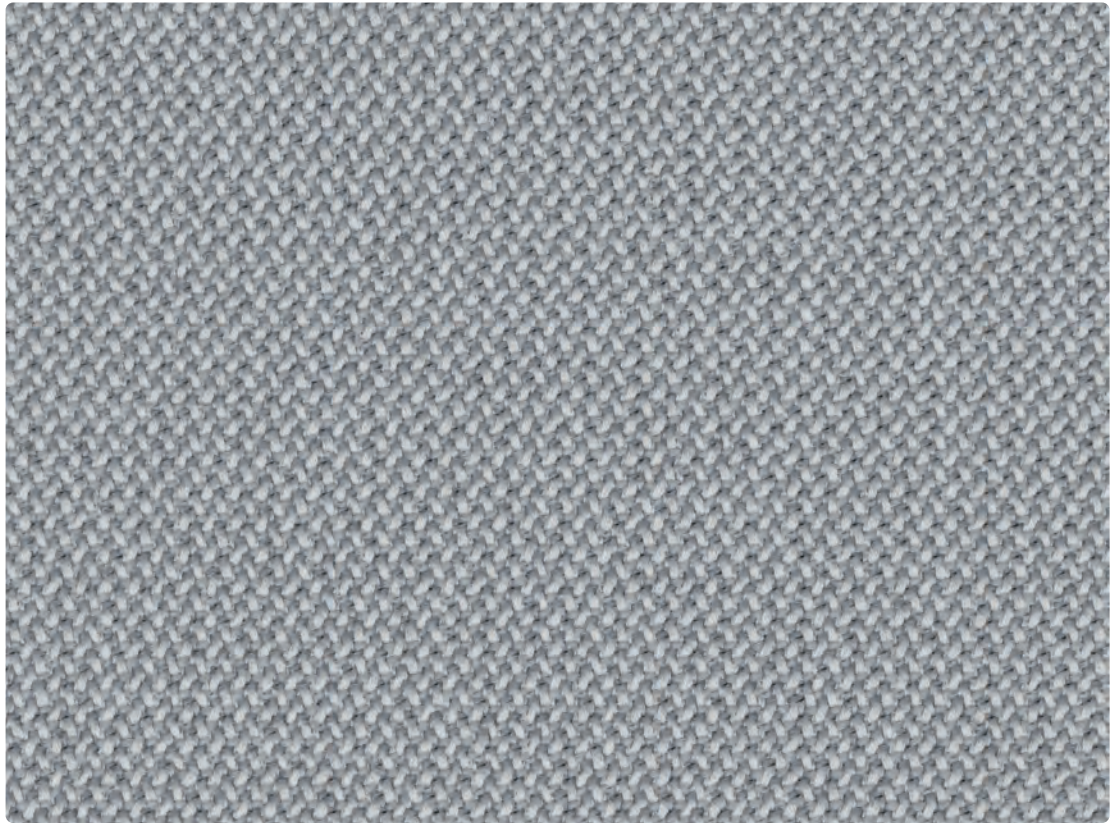
FAR 25.853 (12 sec. vertical)
CAL TB 117-2013
DIN 4102-1 B2
EN 13501-1
EN 1021-1 and -2
BS 5852:2006 (part 1)
BS 5852:2006 (part 2) Crib 5
BKZ: 5.3 SN 198898
UNI 9175 (1 IM)
IMO: 2014/90/EU/Marine
Equipment Directive

Lightfastness

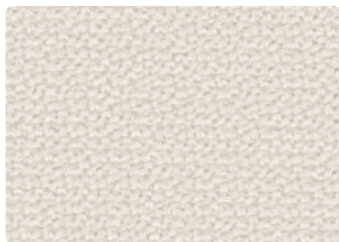
Min 5-8 EN ISO 105-B02

Maintenance

Dry clean



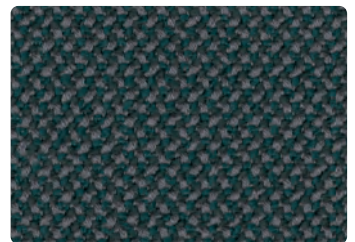
RCR95 Chalk



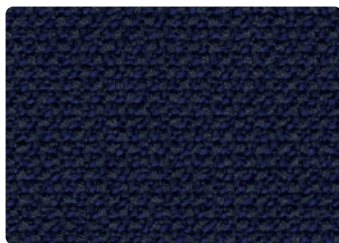
RCR02 Snow



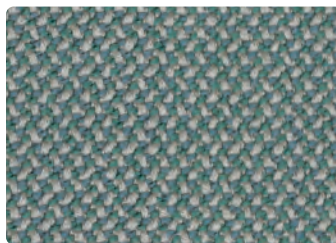
RCR34 Calla



RCR82 Jaspis



RCR90 Navy



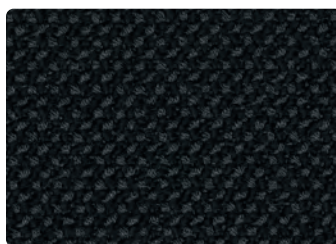
RCR86 Lake



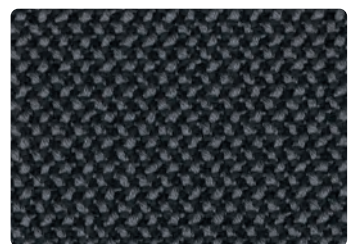
RCR97 Zinn



RCR16 Pepper



RCR08 Black



RCR25 Asphalt

Please use this sample card as indicative, only. It is provided as a guide. There may be variations between this sample card and the real samples.

Content

Cotton 100%

Lightfastness

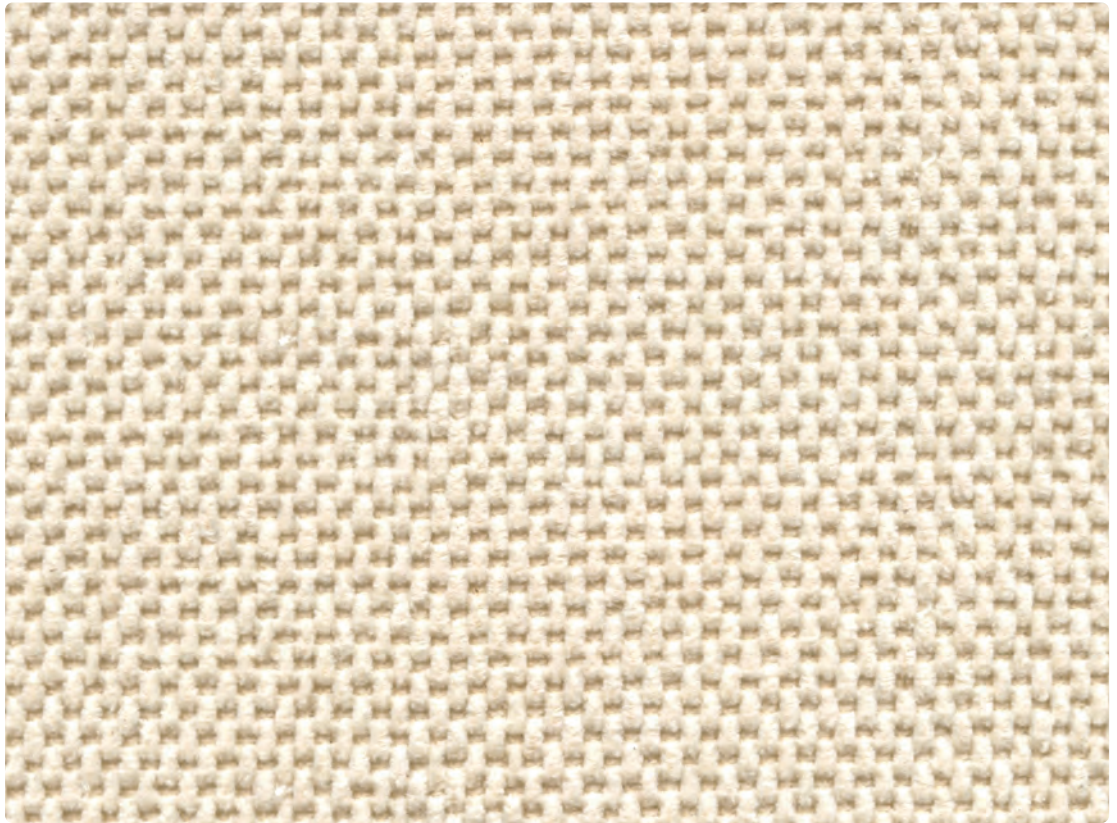
ISO 4/5

Abrasion

20,000 rubs
Martindale method

Maintenance

Clean with solvent-based
cleaning agent



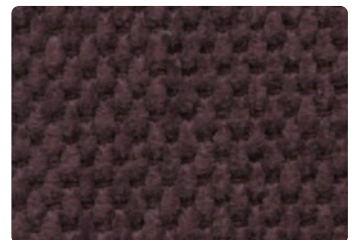
01CP Ivory



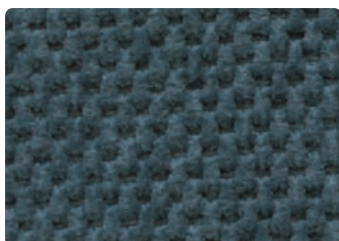
13CP Moss



38CP Cashmere



14CP Wine



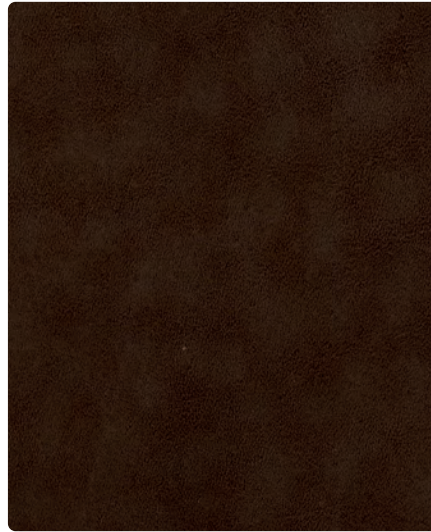
68CP Teal



70CP Sage



06 Cognac



05 Dark Brown



03 Ivory



02 Natural



04 Brown



01 Black



BEL04 Cognac



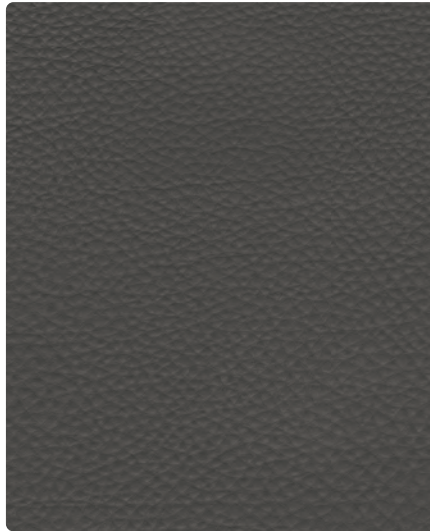
BEL02 Dark Brown



BEL12 Natural



BEL05 Taupe



BEL07 Milk Grey



BEL06 Charcoal



BEL01 Black

Content

Cotton 38%
Acrylic 24%
Viscose 18%
Wool 12%
Nylon 2%

Flame Resistance

BS 5852:2006

Lightfastness

ISO 4/5

Abrasion

62,000 rubs
Martindale method

Maintenance

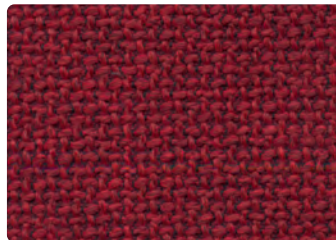
Clean with solvent-based
cleaning agent



01WE White



19WE Light Brown



18WE Red



14WE Blue



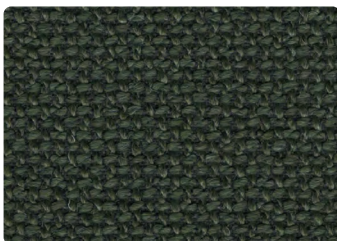
13WE Dark Grey



10WE Grey



03WE Light Grey



12WE Green



04WE Sand

Content

Cotton 48%
Viscose 35%
Flax 17%

Lightfastness

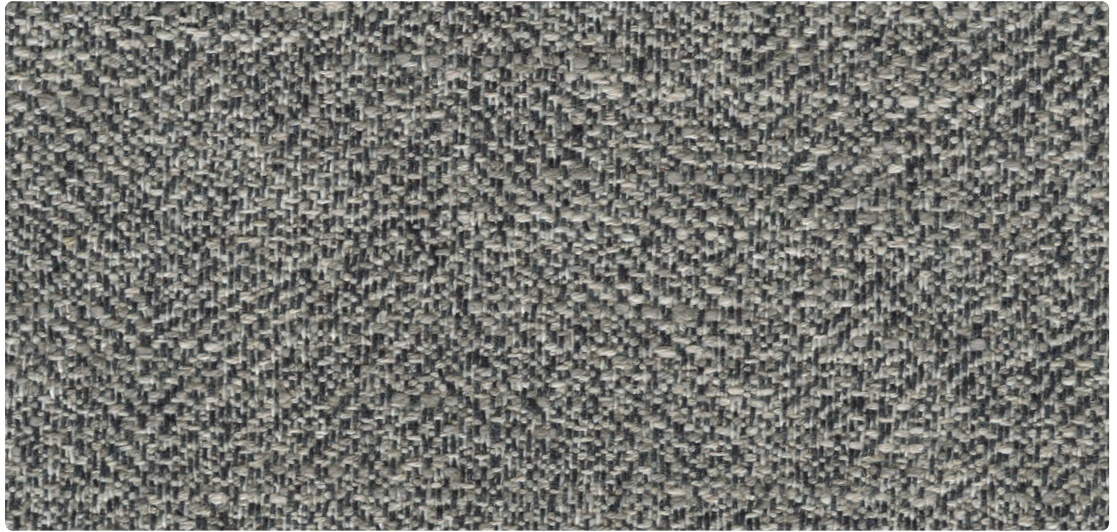
ISO 5

Abrasion

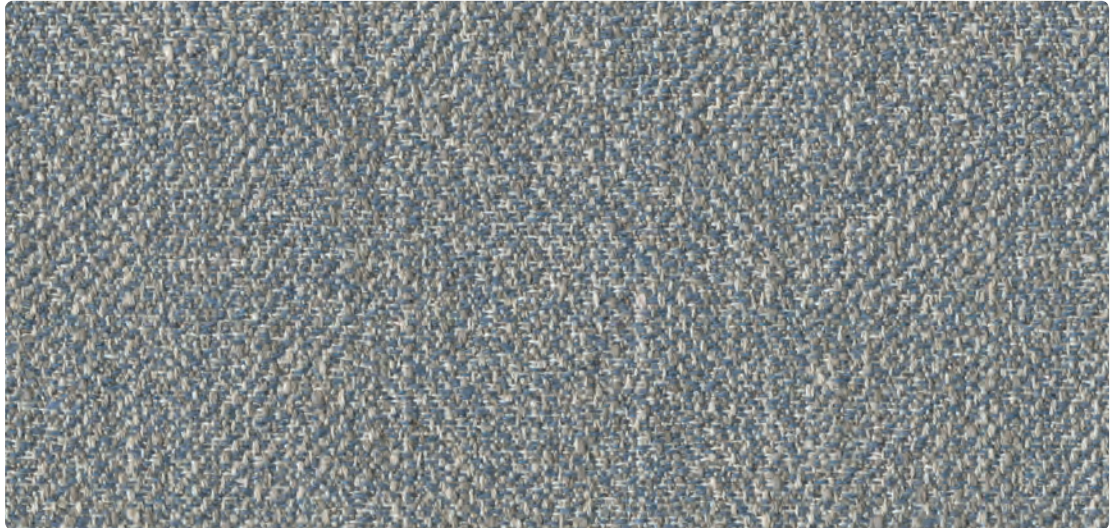
25,000 rubs
Martindale method

Maintenance

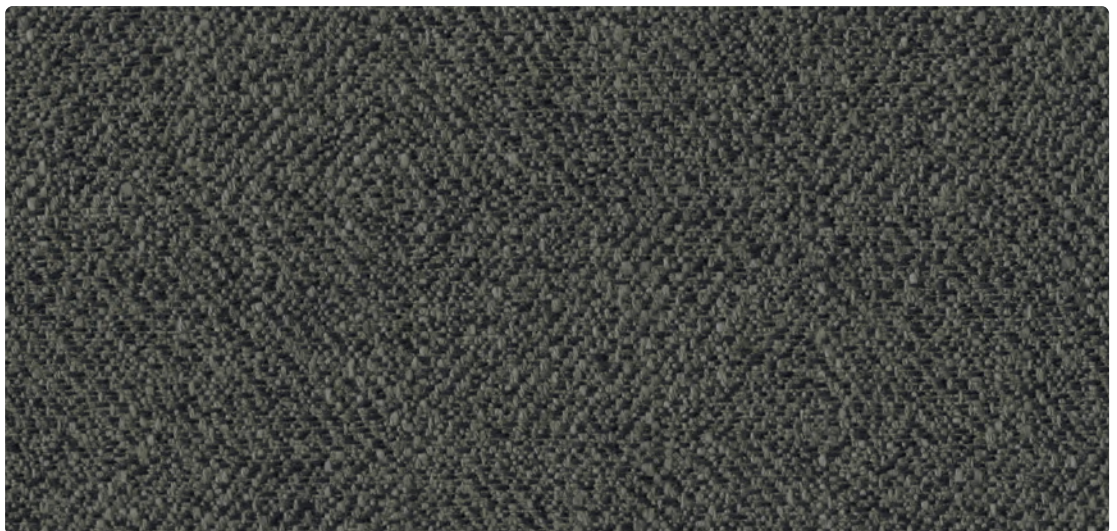
Clean with solvent-based
cleaning agent



02TEX Beige



08TEX Diamond Blue



09TEX Dark Brown

Content

Acrylic 43%
Cotton 25%
Polyester 15%
Viscose 14%
Wool 3%

Flame Resistance

California Technical
Bulletin 117-2013
British Standard 5852: 1979
Part1 (cigarette & match)

Lightfastness

ISO 3/5

Abrasion

25,000 rubs
Martindale method

Maintenance

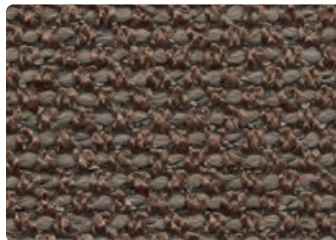
Dry clean, only



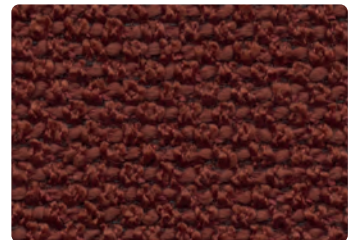
06PE Ivory



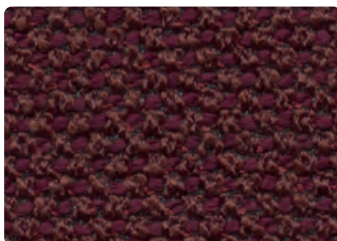
05PE Sand



04PE Taupe



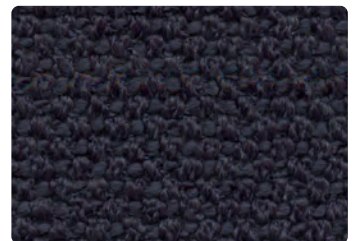
02PE Brick



01PE Burgundy



03PE Lagoon



08PE Blue



09PE Dark Grey



07PE Light Grey

Please use this sample card as indicative, only. It is provided as a guide. There may be variations between this sample card and the real samples.

Content

Cotton 20%
Polyester 80%

Lightfastness

ISO 5

Abrasion

100,000 rubs
Martindale method

Maintenance

Clean with solvent-based
cleaning agent



07H Ice



05H Olive



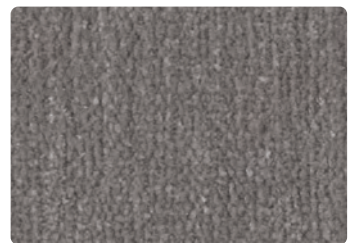
02H Grey



04H Moss



03H Dark Blue



06H Light Grey



01H Black

Please use this sample card as indicative, only. It is provided as a guide. There may be variations between this sample card and the real samples.

Content

Acrylic 45%
Cotton 19%
Flax 12%
Polyester 12%
Viscose 12%

Lightfastness

ISO 4/5

Abrasion

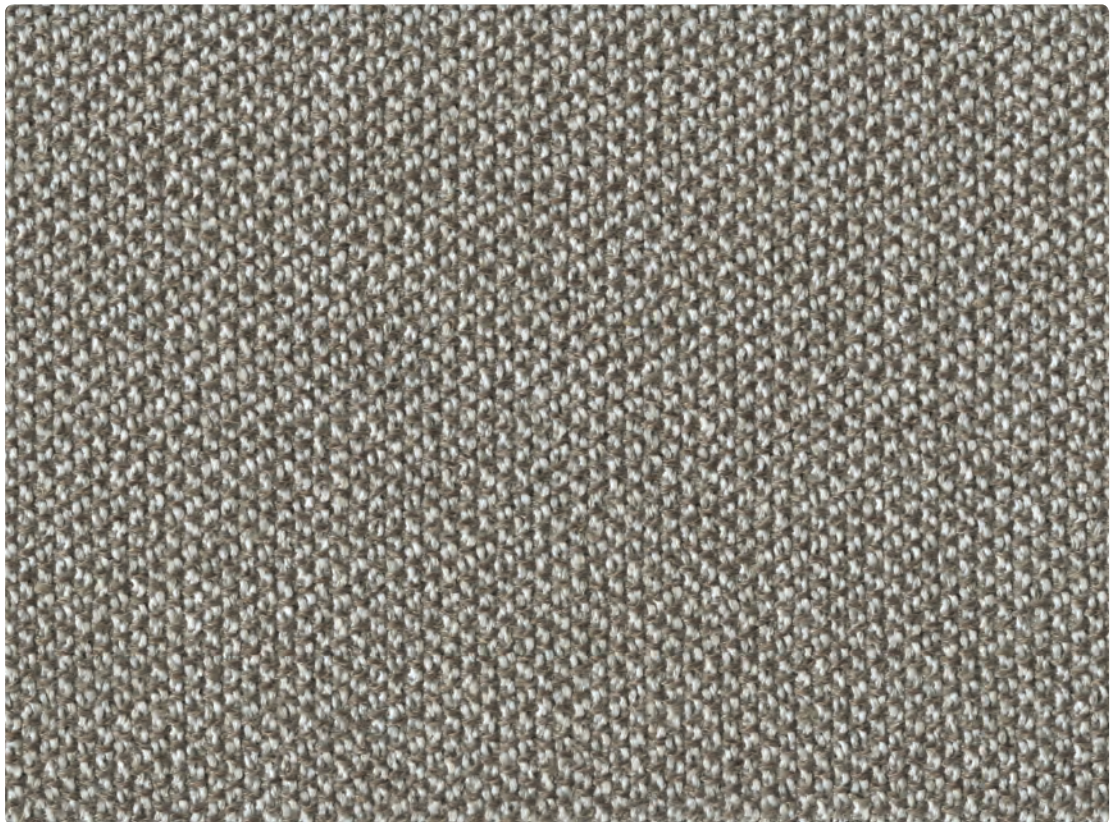
30,000 rubs
Martindale method

Maintenance

Clean with solvent-based
cleaning agent



01FED White



03FED Sand

Content

Acrylic 47%
Cotton 26%
Flax 9%
Polyester 9%
Viscose 9%

Lightfastness

ISO 4/5

Abrasion

30,000 rubs
Martindale method

Maintenance

Clean with solvent-based
cleaning agent



65CRO Ivory



35CRO Brown



52CRO Bluish Green



14CRO Blue

Content

Polyester 100%

Lightfastness

ISO 5

Abrasion

30,000 rubs
Martindale method

Maintenance

Clean with solvent-based
cleaning agent



201DR Ivory



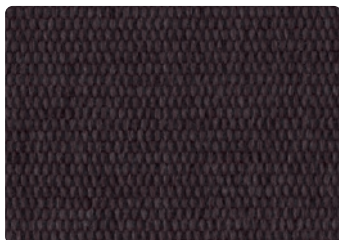
204DR Beige



103DR Light Brown



820DR Avio



100DR Grey-Brown



101DR Dark Grey



110DR Medium Grey



502DR Brick



300DR Red

Tonus 4



424



440



125



454



605



554



224



244



464



130



608



100



135



654



207



474



610



609



374



664



684



634



636



129



631



754



508



210



132



764



216



690



854



613



240



128



615



364



964



131



934



974



914



619



954



118



394

Content

Viscose 40%
Cotton 25%
Acrylic 23%
Polyester 7%
Other fibres 5%

Lightfastness

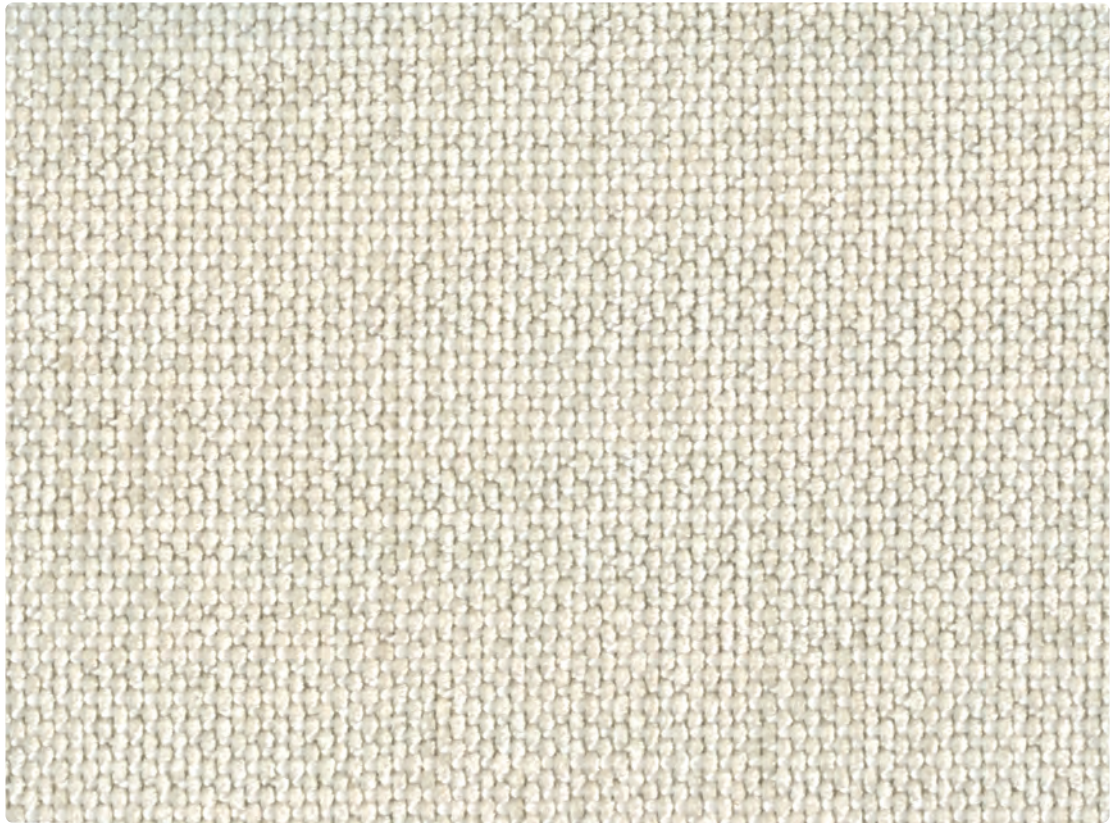
ISO 4/5

Abrasion

35,000 rubs
DIN EN ISO 12947-2

Maintenance

Clean with solvent-based
cleaning agent



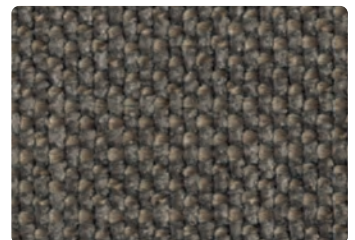
01MH Ivory



02MH Sand



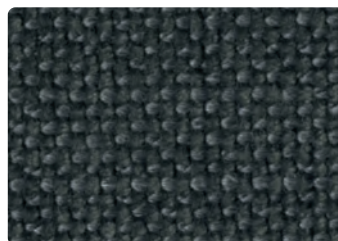
03MH Taupe



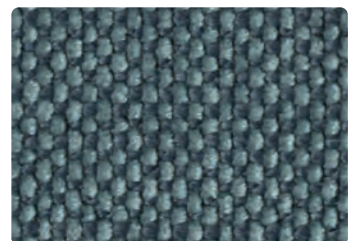
04MH Brown



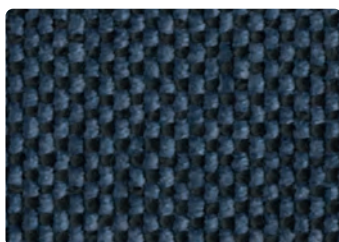
06MH Pearl



07MH Charcoal



05MH Teal



08MH Deep sea

Content

Wool 100%

Flame Resistance

NFPA 260 (UFAC Class 1)

EN1021 1/2

British Standard 5852:

1990 Source 5 (crib 5)

Lightfastness

ISO 4

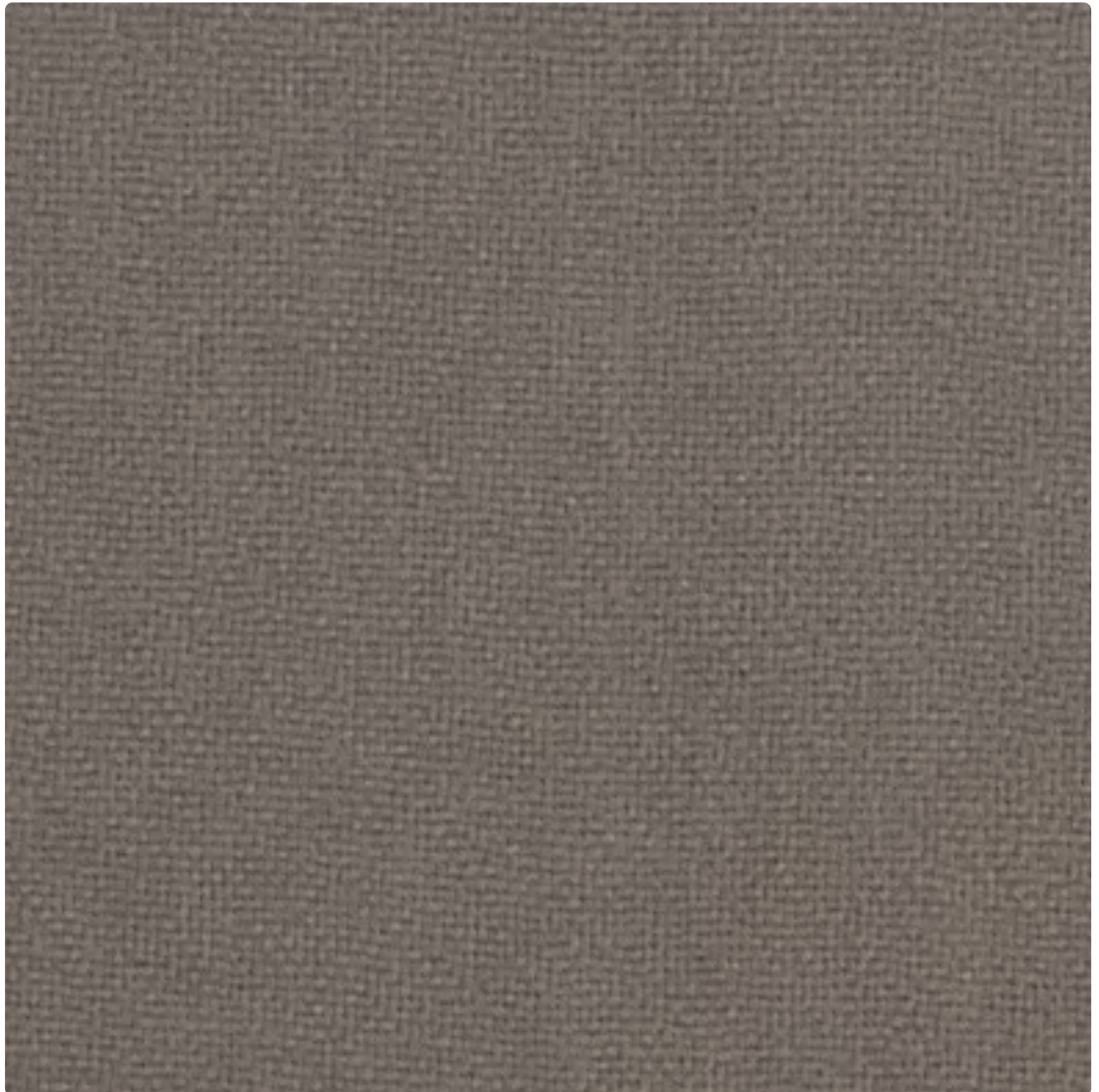
Abrasion

40,000 rubs

Martindale method

Maintenance

Clean with solvent-based
cleaning agent



K120613 Putty



K12061 Buff



K12062 Stucco



K12063 Celery



K12064 Lime



K12065 Olive



K12066 Gold

Content

Wool 100%

Flame Resistance

NFPA 260 (UFAC Class 1)

EN1021 1/2

British Standard 5852:

1990 Source 5 (crib 5)

Lightfastness

ISO 4

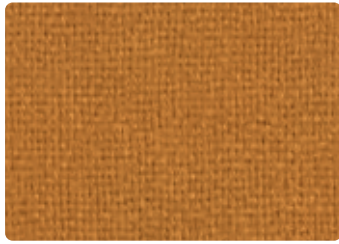
Abrasion

40,000 rubs

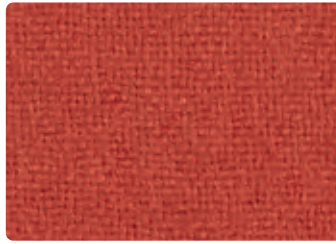
Martindale method

Maintenance

Clean with solvent-based
cleaning agent



K12067 Orange



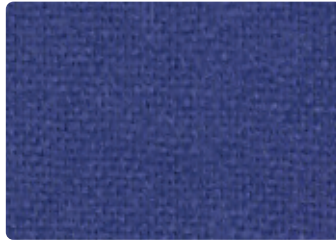
K12068 Melon



K12069 Magenta



K120610 Red



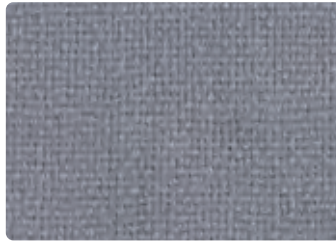
K120611 Admiral



K120612 Navy



K120616 Black



K120614 Silver



K120615 Charcoal

Content

Wool 100%

Flame Resistance

NFPA 260 (UFAC Class 1)

EN1021 1/2

British Standard 5852:

1990 Source 5 (crib 5)

Lightfastness

ISO 4

Abrasion

40,000 rubs

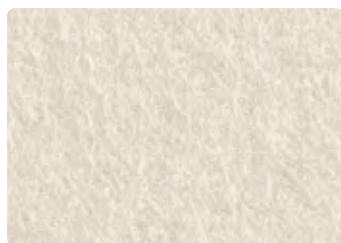
Martindale method

Maintenance

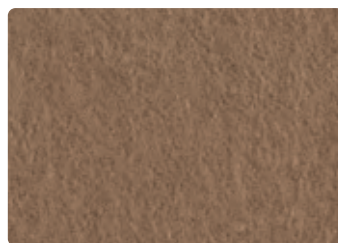
Clean with solvent-based
cleaning agent



K120710 Grape



K12071 Ivory



K12072 Tan



K12073 Apple



K12074 Green



K12075 Canary



K12076 Tangerine

Content

Wool 100%

Flame Resistance

NFPA 260 (UFAC Class 1)

EN1021 1/2

British Standard 5852:

1990 Source 5 (crib 5)

Lightfastness

ISO 4

Abrasion

40,000 rubs

Martindale method

Maintenance

Clean with solvent-based
cleaning agent



K12077 Poppy



K12078 Pink



K12079 Rouge



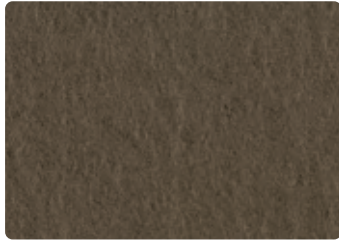
K120711 Cadet



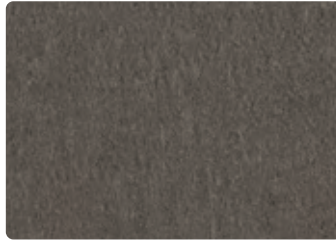
K120712 Baltic



K120713 Blue



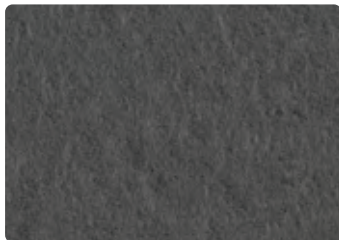
K120714 Toast



K120715 Mocha



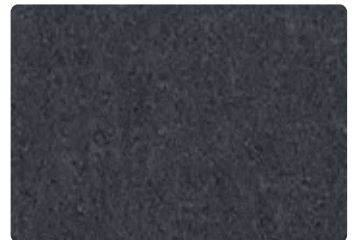
K120716 Carob



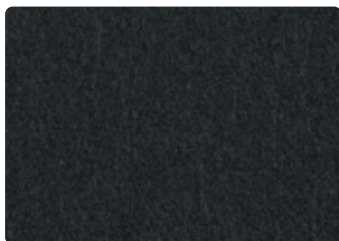
K120717 Pewter



K120718 Grey



K120719 Smoke



K120720 Tar

Content

Wool 90%
Polyimide 10%

Flame Resistance

California Technical
Bulletin 117
EN1021 1/2
British Standard 5852:
1990 Source 5 (crib 5)

Lightfastness

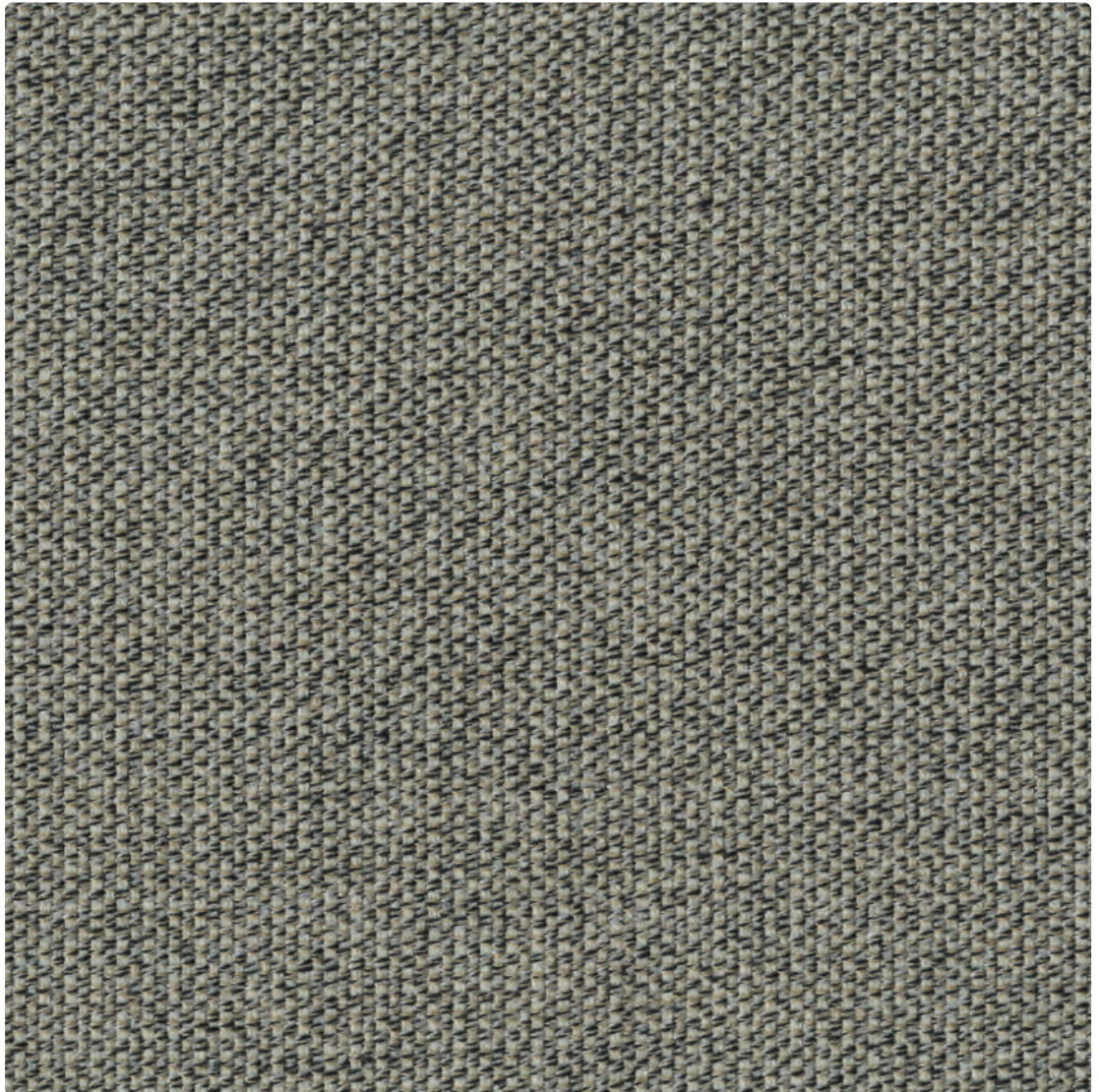
ISO 4/5

Abrasion

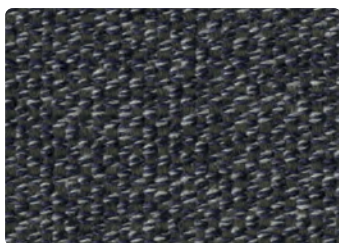
50,000 rubs
Martindale method

Maintenance

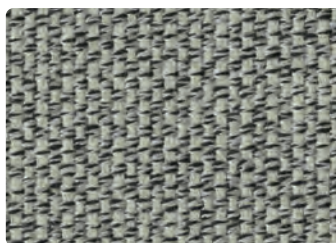
Clean with solvent-based
cleaning agent



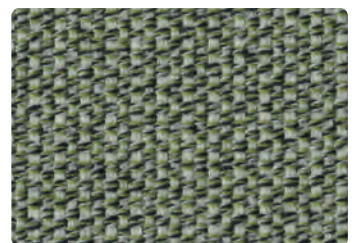
24GN Beige



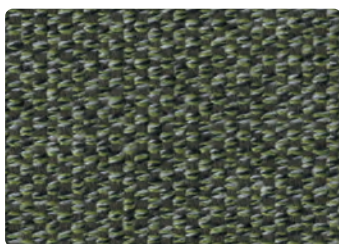
47GN Blue



26GN Grey



25GN Light Green



42GN Green

Content

Viscose 56%
Flax 18%
Acrylic 18%
Jute 8%

Lightfastness

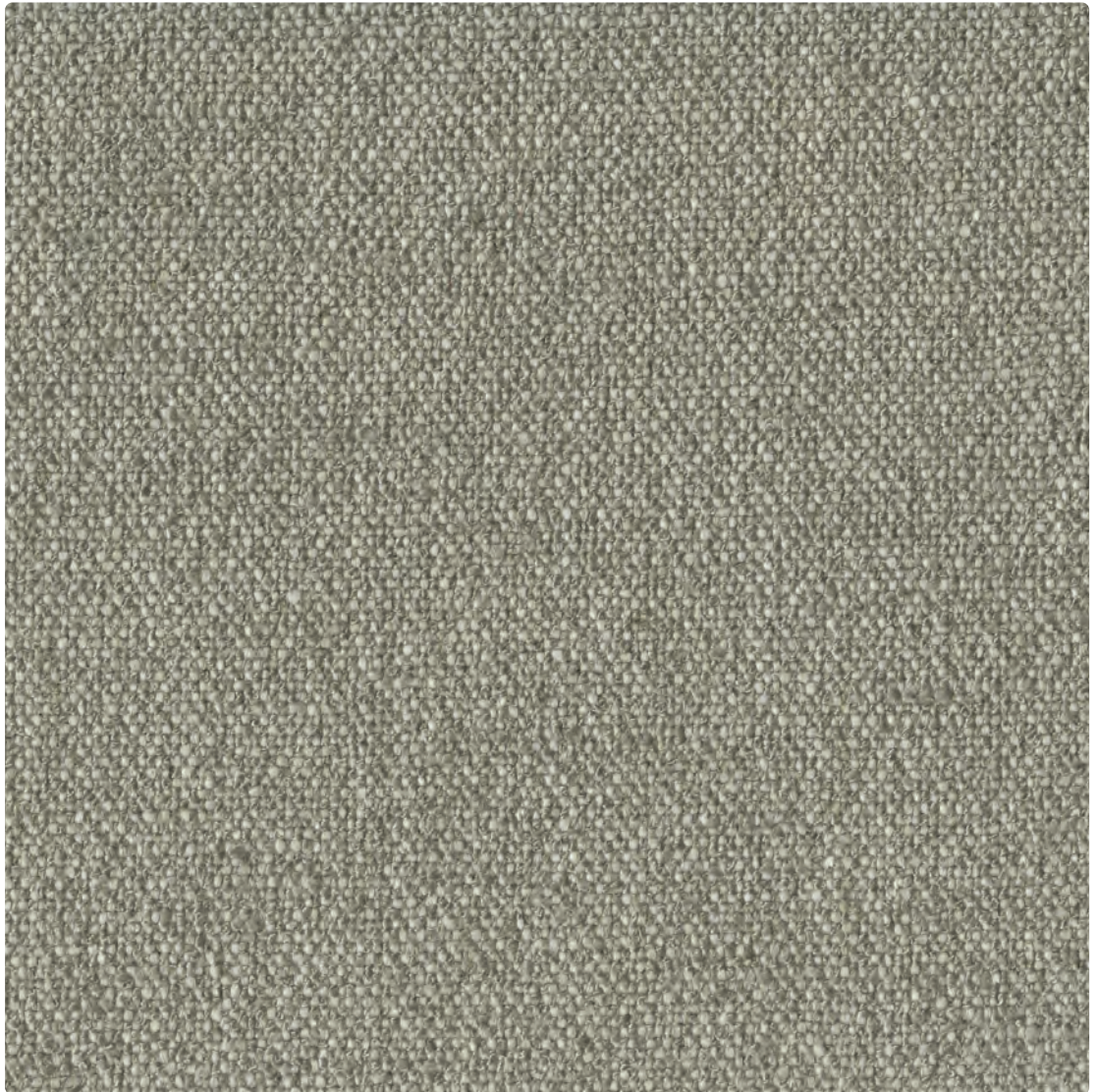
ISO 4/5

Abrasion

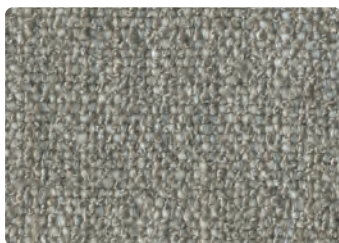
30,000 rubs
Martindale method

Maintenance

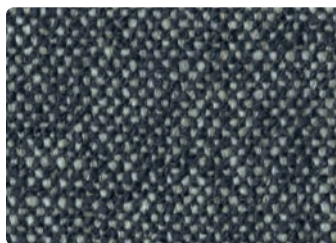
Clean with solvent-based
cleaning agent



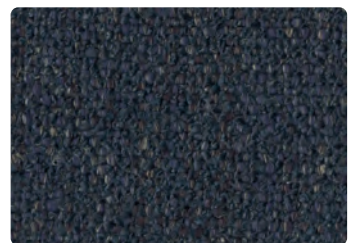
06EX Light Beige



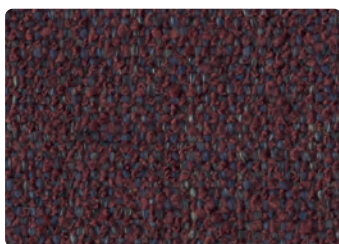
26EX Sand



21EX Blue



17EX Navy



10EX Aubergine

Content

Acrylic 33%
Viscose 25%
Wool 17%
Polyester 14%
Cotton 11%

Lightfastness

ISO 3/4

Abrasion

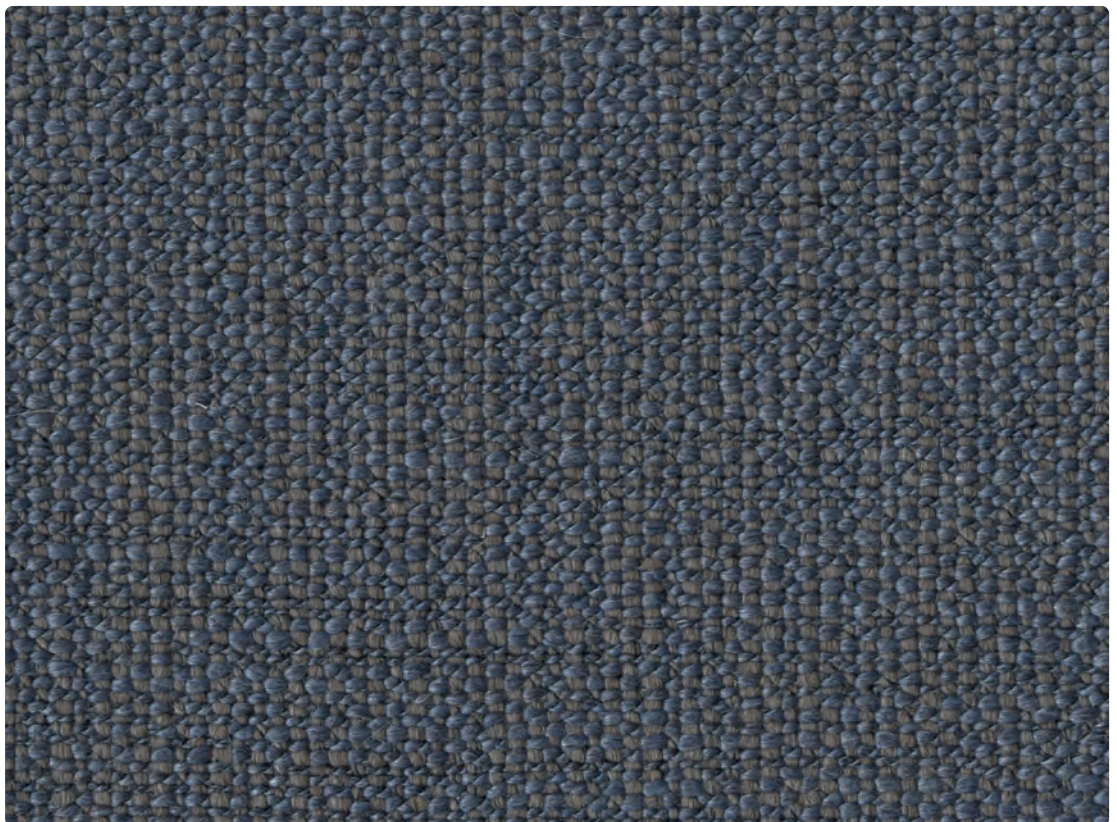
30,000 rubs
DIN EN ISO 12947-2

Maintenance

Clean with solvent-based
cleaning agent



01ESO White



81ESO Avio

Content

Wool 75%
Nylon 20%
Acrylic 5%

Flame Resistance

California Technical
Bulletin 117
EN1021 1/2
British Standard 5852:
1990 Source 5 (crib 5)

Lightfastness

ISO 5/6

Abrasion

40,000 rubs
DIN EN ISO 12947-2

Maintenance

Clean with solvent-based
cleaning agent



52DAP Blue



99DAP Black

Content

Acrylic 33%
Viscose 32%
Wool 16%
Polyester 8%
Cotton 7%
Flax 4%

Flame Resistance

California Technical
Bulletin 117-2013
British Standard 5852: 1979
Part 1 (cigarette & match)

Abrasion

50,000 rubs
Martindale method

Maintenance

Dry clean, only



01CU White



02CU Ivory



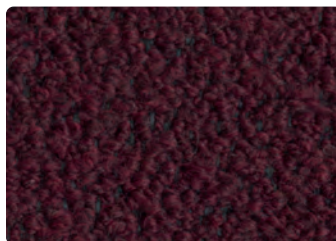
05CU Mustard



04CU Brown



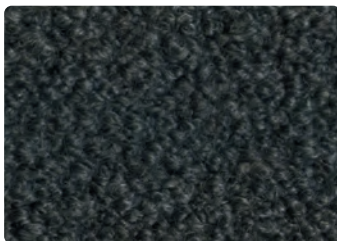
06CU Green



08CU Burgundy



07CU Blue



03CU Dark Grey

Content

Viscose 76%
Cotton 13%
Flax 8%
Nylon 3%

Lightfastness

ISO 4/5

Abrasion

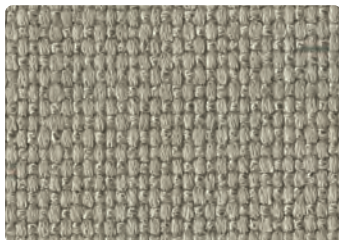
100,000 rubs
Martindale method

Maintenance

Clean with solvent-based
cleaning agent



02CI Ivory



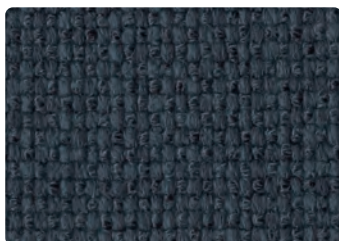
03CI Sand



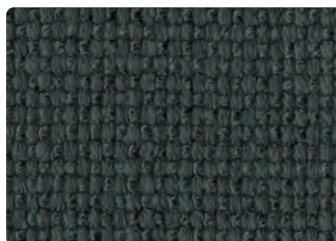
04CI Dark Brown



01CI Steel



06CI Teal



05CI Alp Green



09CI Bordeaux



08CI Ginger



07CI Lemon Curry

Please use this sample card as indicative, only. It is provided as a guide. There may be variations between this sample card and the real samples.

Content

Rayon 48%
 Polyester 36%
 Cotton 16%

Flame Resistance

California Technical
 Bulletin 117
 NFPA260 (UFAC class 1)
 EN1021 1/2
 British Standard 5852:
 1990 Source 5 (crib 5)

Lightfastness

ISO 4

Abrasion

40,000 rubs
 Martindale method

Maintenance

Clean with solvent-based
 cleaning agent



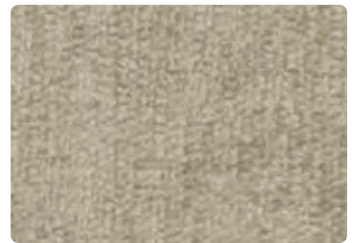
K10546 Brick



K10541 Ivory



K10542 Camel



K10543 Silver



K10544 Blue



K10545 Leaf



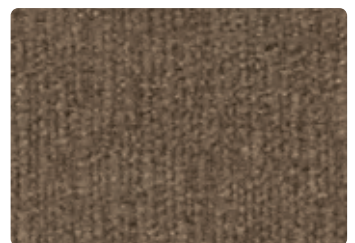
K10547 Olive



K10548 Bordeaux



K10549 Red



K105410 Taupe



K105411 Brown



K105412 Charcoal



K105413 Black

Content

Pile:
Alpaca 60%
New Wool 27%
Nylon 13%
Ground:
Cotton 70%
Polyester 19%
Viscose 11%

Flame Resistance

BS 5852:2006

Lightfastness

ISO 4

Abrasion

40,000 rubs
Martindale method

Maintenance

Clean with solvent-based
cleaning agent



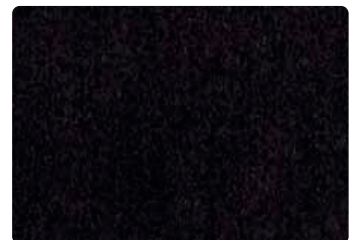
01AL Ivory



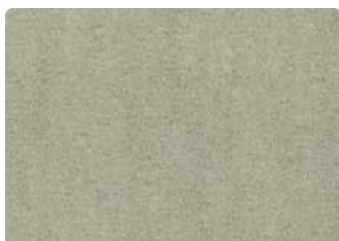
02AL Beige



1103AL Red



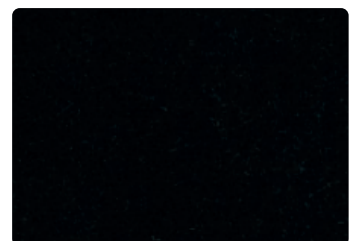
601AL Purple



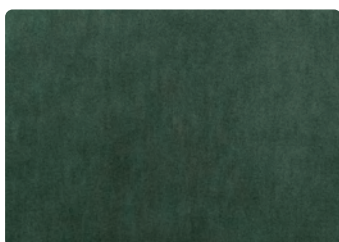
1107AL Ice



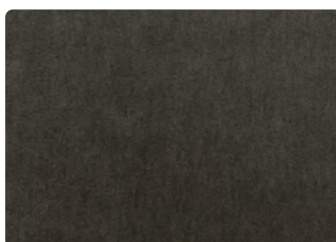
11AL Dark Grey



12AL Black



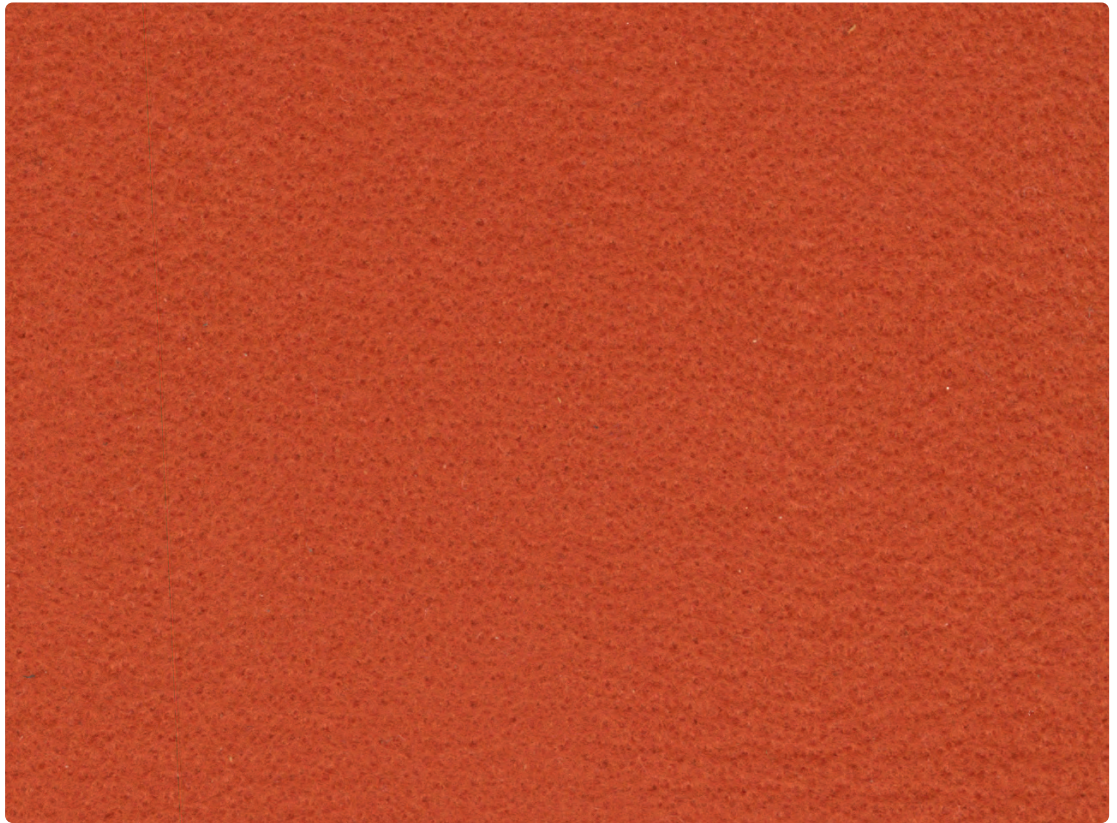
09AL Green



1114AL Taupe

Please use this sample card as indicative, only. It is provided as a guide. There may be variations between this sample card and the real samples.

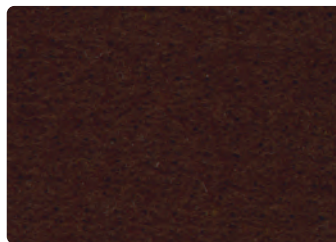
Content
Polyester 100%



636 Brick



1530 Acid Green



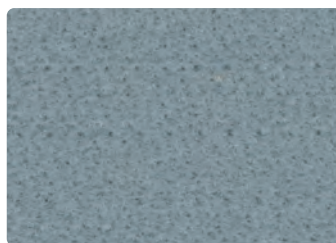
1721 Brown



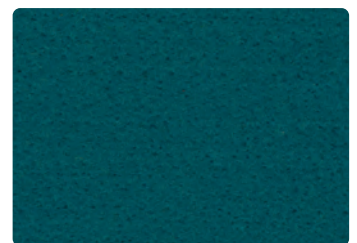
1718 Green



1716 Dark Blue



553 Light Grey



1615 Petrol



1726 Burgundy



2415 Anthracite

Please use this sample card as indicative, only. It is provided as a guide.
There may be variations between this sample card and the real samples.

KnollTextiles Archival Collection, 1970

Content

Ground: cotton 54%
Pile: mohair 46%

Flame Resistance

California Technical
Bulletin 117
NFPA 701 Test 1 (1996)
with topical treatment
EN1021 1/2
British Standard 5852:
1990 Source 5 (crib 5)

Lightfastness

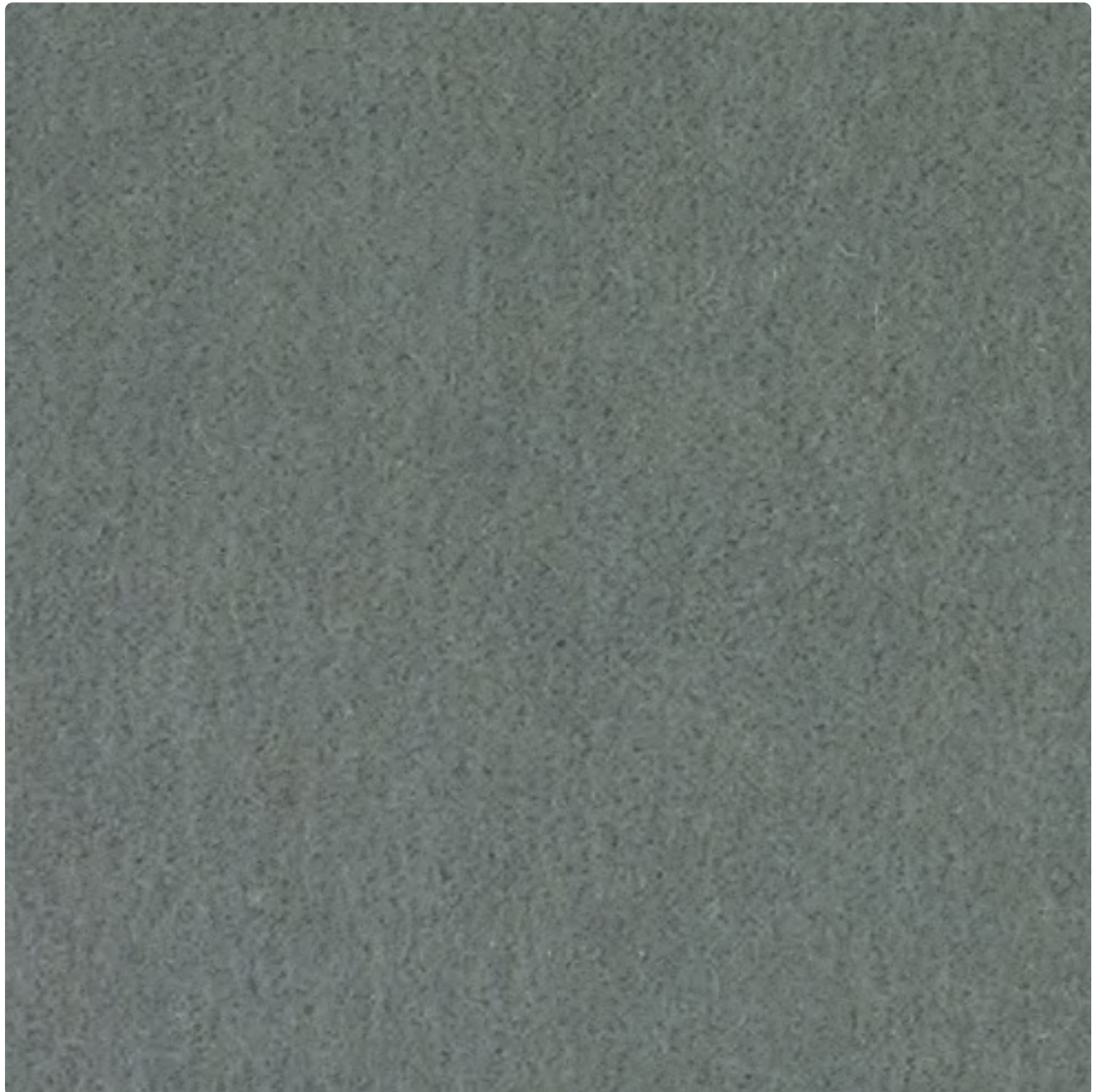
ISO 5

Abrasion

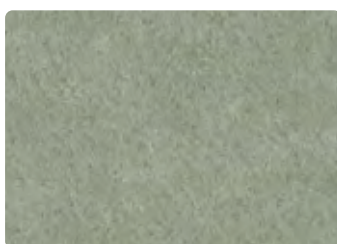
20,000 rubs
Martindale method

Maintenance

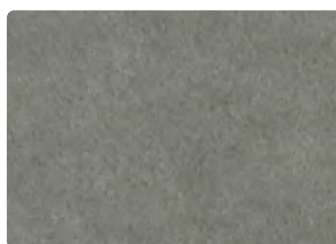
Clean with solvent-based
cleaning agent



K78487 Swan



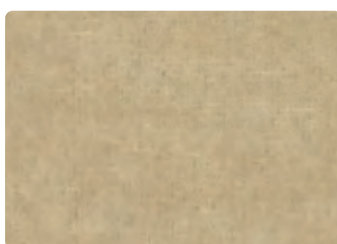
K78472 Celadon



K78471 Silver



K78449 Sage



K78470 Palomino



K78460 Sandstone



K78485 Penny

KnollTextiles Archival Collection, 1970

Content

Ground: cotton 54%
Pile: mohair 46%

Flame Resistance

California Technical
Bulletin 117
NFPA 701 Test 1 (1996)
with topical treatment
EN1021 1/2
British Standard 5852:
1990 Source 5 (crib 5)

Lightfastness

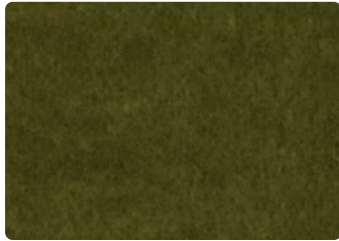
ISO 5

Abrasion

20,000 rubs
Martindale method

Maintenance

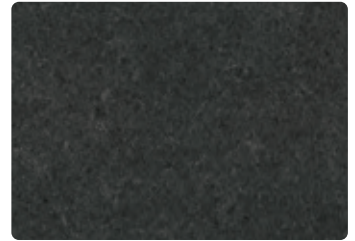
Clean with solvent-based
cleaning agent



K78474 Moss



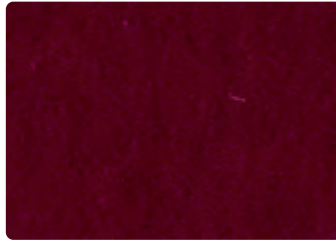
K78463 Marina



K78448 Graphite



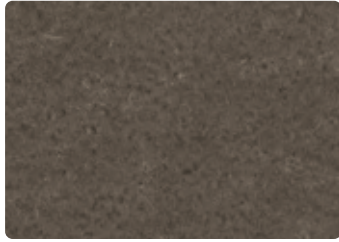
K78476 Tomato



K78483 Bayberry



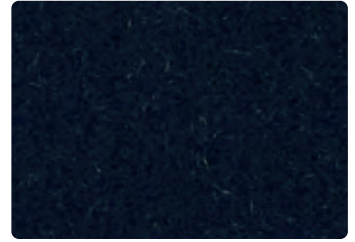
K78482 Currant



K78462 Clove



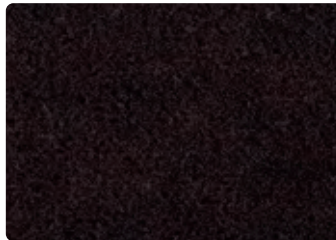
K78481 Teal



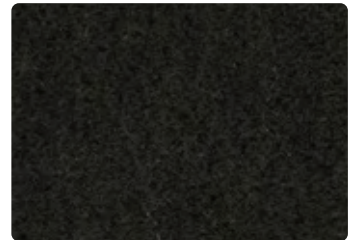
K78484 Aviator



K78434 Wine



K78479 Espresso



K78486 Truffle



K78466 Ebony

Content

Wool 86%
Rayon 14%

Flame Resistance

California Technical
Bulletin 117
EN1021 1/2
British Standard 5852:
1990 Source 5 (crib 5)

Lightfastness

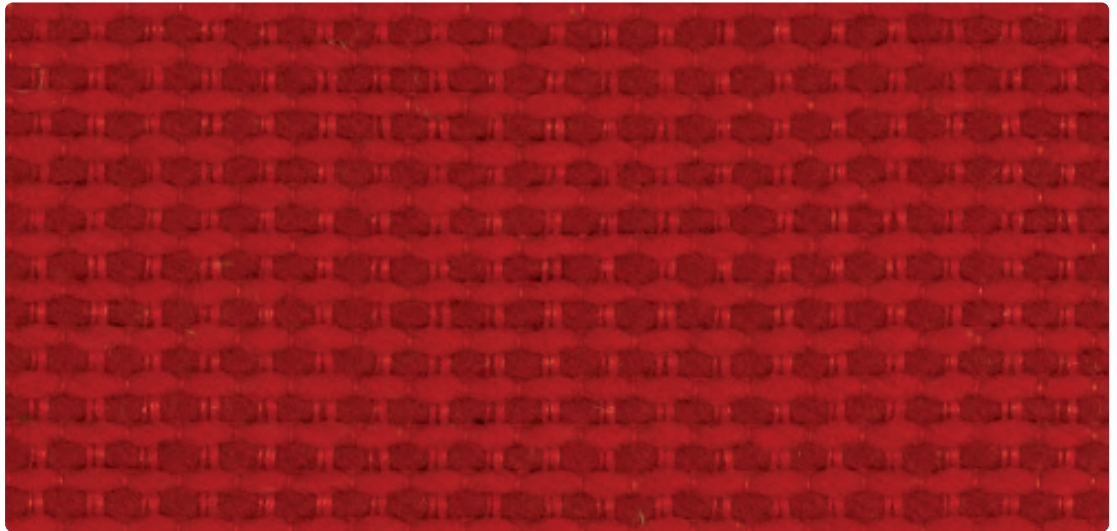
ISO 5

Abrasion

80,000 rubs
Martindale method

Maintenance

Clean with solvent-based
cleaning agent



H80019 Fire Red



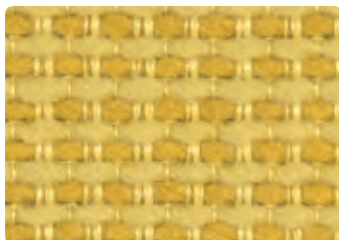
H80040 Orange



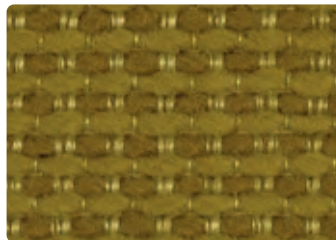
H80050 Natural



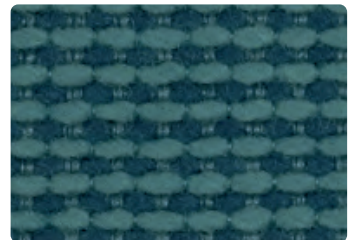
H80012 Ivory



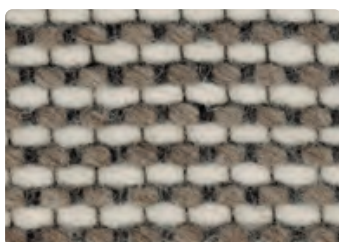
H80051 Yellow



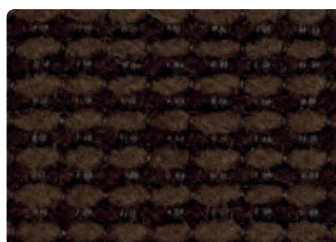
H80041 Green



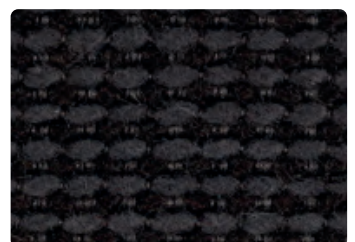
H80042 Blue



H8002 Sand



H80043 Brown



H80044 Grey



H80052 Hot Pink

Content

Polyester microfiber 49%
(30% plant based)
Polyester 31%
Polyurethane 20%

Flame Resistance

NFPA 260 (UFAC Class 1)
ASTM E-84 (Adhered) Class A
ASTM E-84 (Unadhered)
Class A
EN 1021 1/2
British Standard 5852:
1990 Source 5 (crib 5)

Lightfastness

AATCC 16E, 40 hours, Class 5

Abrasion

200.000 double rubs
Wyzenbeek method

Maintenance

Clean with water solvent based
cleaning agent



K102115 Alpine



K102124 Tapioca



K102126 Cement



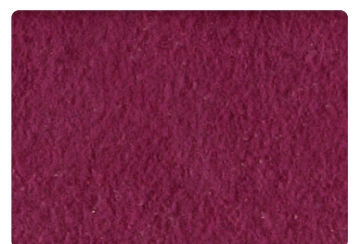
K102125 Pebble



K10218 Poppy



K102139 Ruby Red



K102131 Petal

Content

Polyester microfiber 49%
(30% plant based)
Polyester 31%
Polyurethane 20%

Flame Resistance

NFPA 260 (UFAC Class 1)
ASTM E-84 (Adhered) Class A
ASTM E-84 (Unadhered)
Class A
EN 1021 1/2
British Standard 5852:
1990 Source 5 (crib 5)

Lightfastness

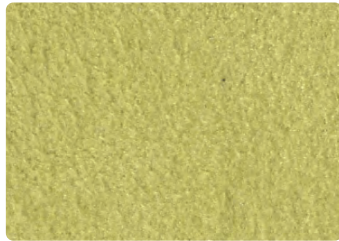
AATCC 16E, 40 hours, Class 5

Abrasion

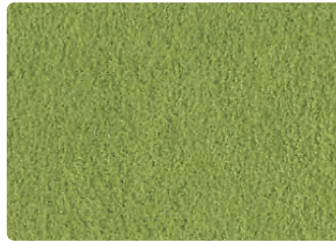
200.000 double rubs
Wyzenbeek method

Maintenance

Clean with water solvent based
cleaning agent



K102128 Ray



K102118 Kiwi



K102136 Avocado



K102134 Tinted Gold



K102141 Tamarind



K102140 Plum



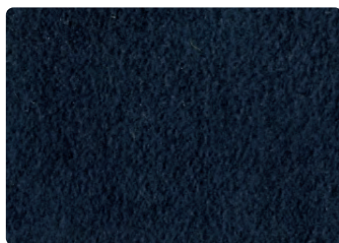
K102132 Vermillion



K102137 Cerulean



K102113 Placid



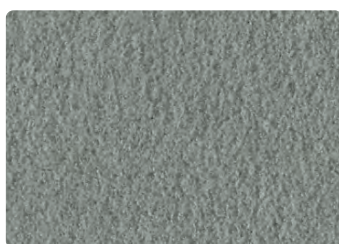
K102114 Midnight



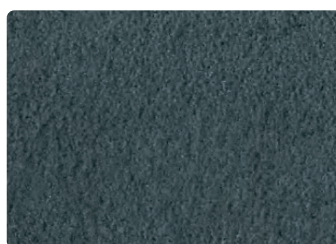
K102129 Mink



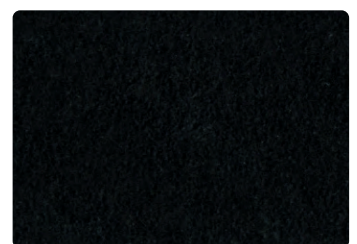
K102133 Chinchilla



K102120 Silver



K102121 Flannel



K102122 Black Onyx

Content

Wool 45%
Mohair 40%
Polyimide 15%

Lightfastness

ISO 4/5

Abrasion

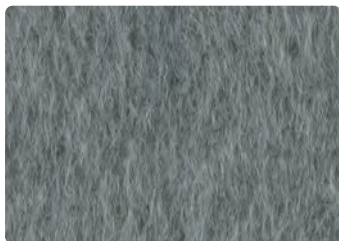
45,000 rubs
Martindale method

Maintenance

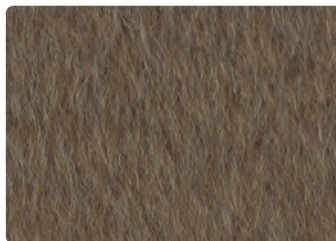
Clean with solvent-based
cleaning agent



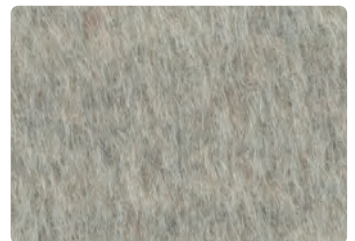
27COL Marmot



14COL Grey



12COL Chamois



28COL Sand

Content

Viscose 42%
 Flax 34%
 Acetate 20%
 Nylon 2%
 Polyester 2%

Lightfastness

ISO 4/5

Abrasion

90,000 rubs
 Martindale method

Maintenance

Clean with solvent-based
 cleaning agent



02AN Natural



03AN Ivory



05AN Sand



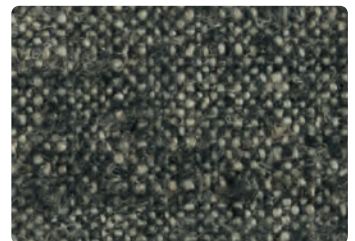
07AN Plume



08AN Pearl



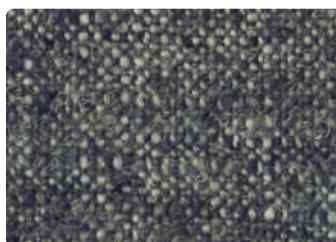
09AN Sea Water



10AN Graphite



12AN Terracotta



20AN Marine

Please use this sample card as indicative, only. It is provided as a guide. There may be variations between this sample card and the real samples.

Knoll

ATLANTIC
Onyx
ON99



Knoll

ATLANTIC
Sea Green
AT30



Knoll

ATLANTIC
Dark Beige
AT11



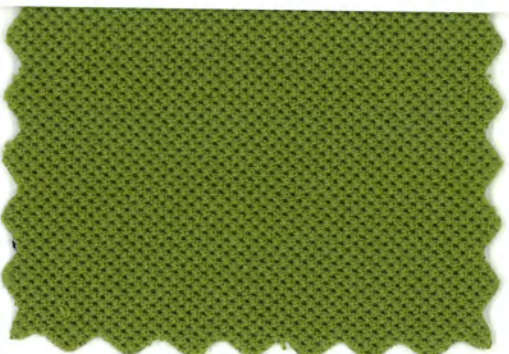
Knoll

ATLANTIC
Blue Green
AT70



Knoll

ATLANTIC
Lemongrass
LE75



Knoll

ATLANTIC
Rusty Red
AT92

