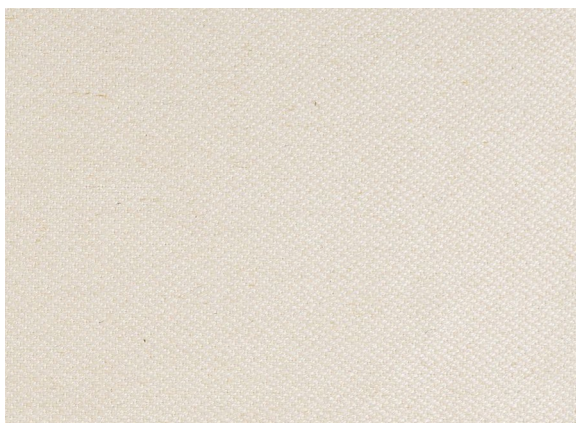



→ Alabama 12



Caratteristiche Tecniche / Technical features:

Categoria Category	Basic Basic
Altezza Height	cm 140 inch 55,1181
Peso gr/mtl Weight gr/mtl	550 g/mt2 550 g/mt2
Composizione Composition	45% viscosa, 22% lino, 20% cotone, 10% acrilico, 3% altre fibre 45% viscose, 22% linen, 20% cotton, 10% acrylic, 3% other fibers
Martindale	25.000 25.000
Resistenza alla luce Light resistance	4/5 4/5
Simboli di lavaggio Wash Care Symbols	

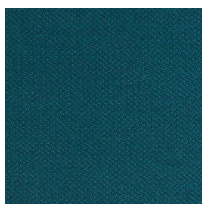
→ Altri tessuti Alabama - Other Alabama fabrics



Alabama 18*



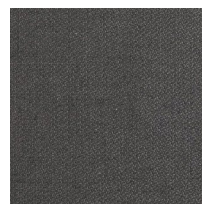
Alabama 1



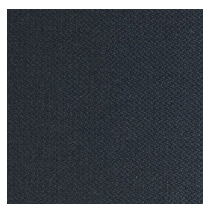
Alabama 30*



Alabama 7



Alabama 10



Alabama 17



Alabama 9*



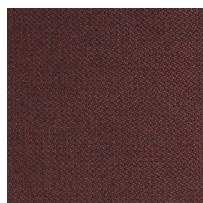
Alabama 3*



Alabama 2



Alabama 15*



Alabama 16



Alabama 4



Alabama 5



Alabama 22*

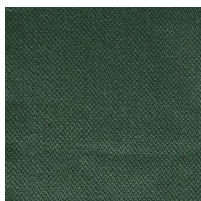


Alabama 14*

* Variante in eliminazione. Disponibile fino ad esaurimento scorte, entro Dicembre 2022.
Discontinued color variants. Available only until stocks are exhausted, by December 2022.

→ **Nuove varianti colore aggiunte - New added color variants**

Disponibili a partire da Gennaio 2023 - Available from January 2023

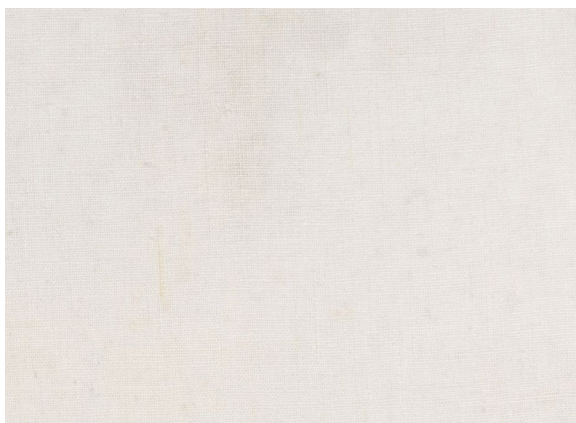


Alabama 146



Alabama 155

→ **Brenda 01**



Caratteristiche Tecniche / Technical features:

Categoria Category	Top Top
Altezza Height	cm 140 inch 55,1181
Peso gr/mtl Weight gr/mtl	580 g/mt2 580 g/mt2
Composizione Composition	100% lino 100% linen
Martindale	18.000 18.000
Resistenza alla luce Light resistance	>4 >4
Simboli di lavaggio Wash Care Symbols	

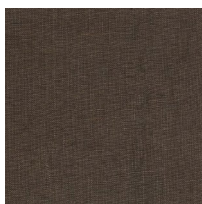
→ **Altri tessuti Brenda - Other Brenda fabrics**



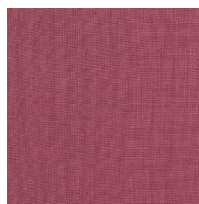
Brenda 13



Brenda 14



Brenda 05



Brenda 19*



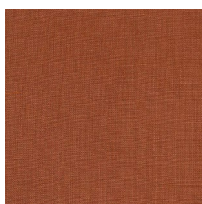
Brenda 15



Brenda 03



Brenda 17*



Brenda 18*



Brenda 16

* Variante in eliminazione. Disponibile fino ad esaurimento scorte, entro Dicembre 2022.
Discontinued color variants. Available only until stocks are exhausted, by December 2022.

→ Fashion 23/15



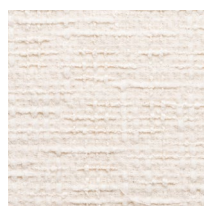
Caratteristiche Tecniche / Technical features:

Categoria Category	Special Special
Altezza Height	cm 140 inch 55,1181
Peso gr/mtl Weight gr/mtl	500 g/mt2 500 g/mt2
Composizione Composition	87% cotone, 9% viscosa, 4% lino 87% cotton, 9% viscose, 4% linen
Martindale Martindale	30.000 30.000
Resistenza alla luce Light resistance	4/5 4/5
Simboli di lavaggio Wash Care Symbols	

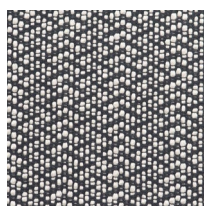
→ Altri tessuti Fashion - Other Fashion fabrics



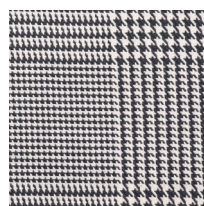
Fashion Flos



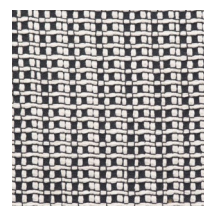
Fashion Brembo*



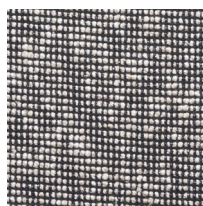
Fashion 29/15*



Fashion 12/15*



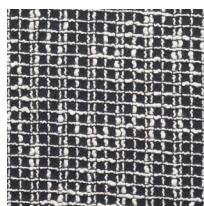
Fashion 34/15*



Fashion 29/10



Fashion Principe



Fashion 50/15



Fashion Wizard Rigato*



Fashion Estonia 17

→ Nuove varianti colore aggiunte - New added color variants

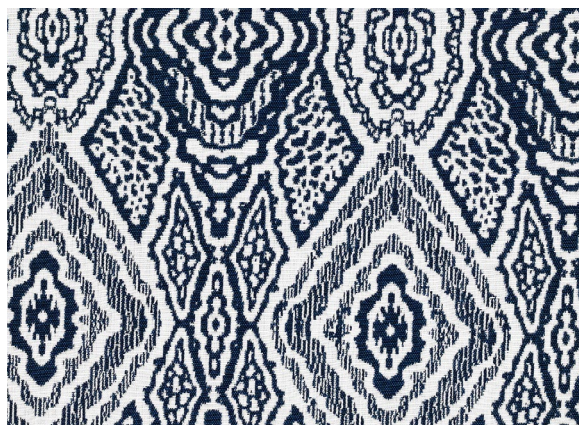
Disponibili a partire da Gennaio 2023 - Available from January 2023



Fashion 17/19

* Variante in eliminazione. Disponibile fino ad esaurimento scorte, entro Dicembre 2022.
Discontinued color variants. Available only until stocks are exhausted, by December 2022.

→ Fes 75



Caratteristiche Tecniche / Technical features:

Categoria Category	Special Special
Altezza Height	cm 140 inch 55,1181
Peso gr/mtl Weight gr/mtl	600 g/mt2 600 g/mt2
Composizione Composition	100% acrilico tinto in massa 100% solution dyed acrylic
Martindale	25.000 25.000
Resistenza alla luce Light resistance	>7/8 >7/8
Simboli di lavaggio Wash Care Symbols	

→ Altri tessuti Fes - Other Fes fabrics



Fes 22*



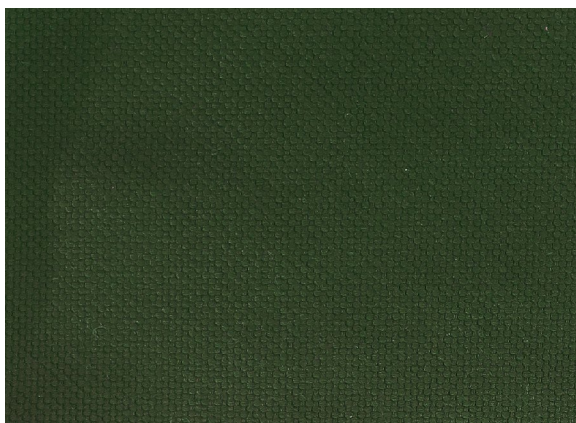
Fes 79



Fes 926

* Variante in eliminazione. Disponibile fino ad esaurimento scorte, entro Dicembre 2022.
Discontinued color variants. Available only until stocks are exhausted, by December 2022.

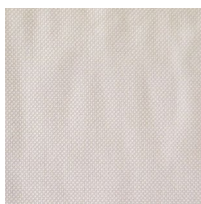
→ **Ginostra 7**



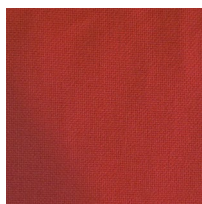
Caratteristiche Tecniche / Technical features:

Categoria Category	Media / Extra Media / Extra
Altezza Height	cm 140 inch 55,1181
Peso gr/mtl Weight gr/mtl	300 g/mt2 300 g/mt2
Composizione Composition	100% acrilico tinto in massa 100% solution dyed acrylic
Martindale Martindale	40.000 40.000
Resistenza alla luce Light resistance	7/8 7/8
Simboli di lavaggio Wash Care Symbols	

→ **Altri tessuti Ginostra - Other Ginostra fabrics**



Ginostra 15929



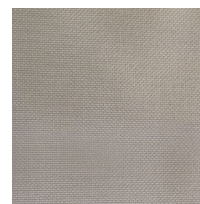
Ginostra 84*



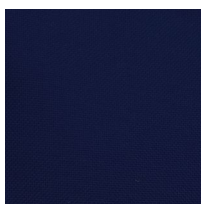
Ginostra 79



Ginostra 97



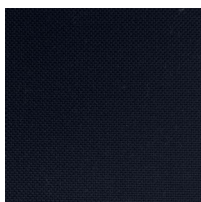
Ginostra 94



Ginostra 75*

→ **Nuove varianti colore aggiunte - New added color variants**

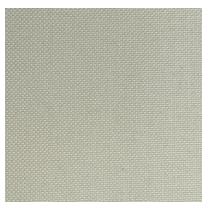
Disponibili a partire da Gennaio 2023 - Available from January 2023



Ginostra 92



Ginostra 98



Ginostra 929

* Variante in eliminazione. Disponibile fino ad esaurimento scorte, entro Dicembre 2022.
Discontinued color variants. Available only until stocks are exhausted, by December 2022.

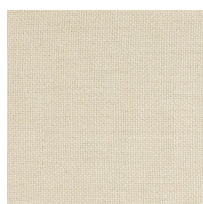
→ **Kahli 1**



Caratteristiche Tecniche / Technical features:

Categoria Category	Top Top
Altezza Height	cm 140 inch 55,1181
Peso gr/mtl Weight gr/mtl	750 g/mt2 750 g/mt2
Composizione Composition	100% lino 100% linen
Martindale Martindale	25.000 25.000
Resistenza alla luce Light resistance	4/5 4/5
Simboli di lavaggio Wash Care Symbols	

→ **Altri tessuti Kahli - Other Kahli fabrics**



Kahli 2



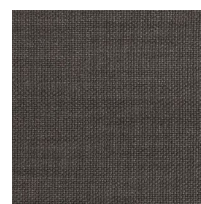
Kahli 3



Kahli 5*



Kahli 6



Kahli 7



Kahli 14*



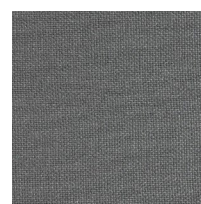
Kahli 4*



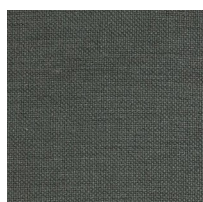
Kahli 8



Kahli 9*



Kahli 10*



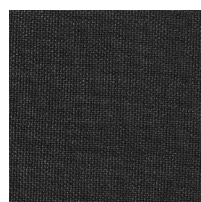
Kahli 11



Kahli 12*



Kahli 13*



Kahli Nero*

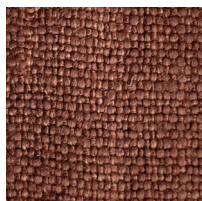
* Variante in eliminazione. Disponibile fino ad esaurimento scorte, entro Dicembre 2022.
Discontinued color variants. Available only until stocks are exhausted, by December 2022.

→ **Nuove varianti colore aggiunte - New added color variants**

Disponibili a partire da Gennaio 2023 - Available from January 2023



Kahli 31



Kahli 29



Kahli 26



Kahli 27

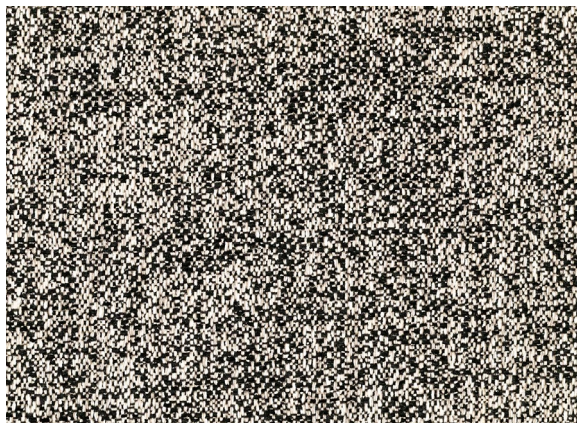


Kahli 30




Kahli 28

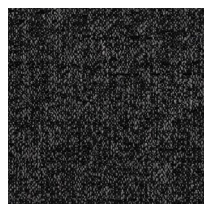
→ **Lampedusa 5**



Caratteristiche Tecniche / Technical features:

Categoria Category	Media / Extra Media / Extra
Altezza Height	cm 140 inch 55,1181
Peso gr/mtl Weight gr/mtl	890/900 g/mt2 890/900 g/mt2
Composizione Composition	45% cotone, 28% acrilico, 19% viscosa, 8% lino 45% cotton, 28% acrylic, 19% viscose, 8% lino
Martindale	25.000 25.000
Resistenza alla luce Light resistance	4/5 4/5
Simboli di lavaggio Wash Care Symbols	

→ **Altri tessuti Lampedusa - Other Lampedusa fabrics**



Lampedusa 3



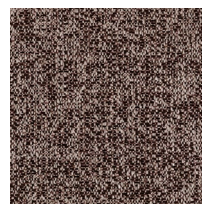
Lampedusa 14



Lampedusa 26



Lampedusa 27



Lampedusa 32

→ **Nuove varianti colore aggiunte - New added color variants**

Disponibili a partire da Gennaio 2023 - Available from January 2023



Lampedusa 24

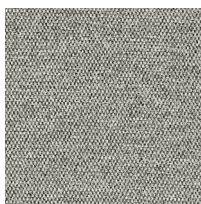
→ **Magnolia Bianco**



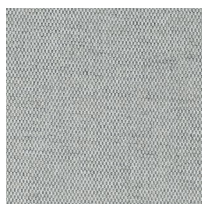
Caratteristiche Tecniche / Technical features:

Categoria Category	Top Top
Altezza Height	cm 140 inch 55,1181
Peso gr/mtl Weight gr/mtl	550 g/mt2 550 g/mt2
Composizione Composition	80% cotone, 20% viscosa 80% cotton, 20% viscose
Martindale Martindale	59.000 59.000
Resistenza alla luce Light resistance	6 6
Simboli di lavaggio Wash Care Symbols	

→ **Altri tessuti Magnolia - Other Magnolia fabrics**



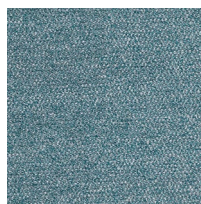
Magnolia
Bianco/Nero



Magnolia 05
Cenere



Magnolia
Antracite/Nero*



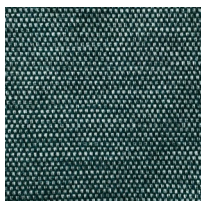
Magnolia 06
Azzurro*



Magnolia
Taupe/Nero*

→ **Nuove varianti colore aggiunte - New added color variants**

Disponibili a partire da Gennaio 2023 - Available from January 2023



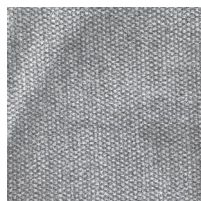
Magnolia 22
Ottanio



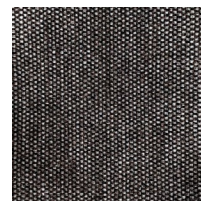
Magnolia 21
Blu



Magnolia 23
Verde



Magnolia 08
Grigio



Magnolia 25
Maron

* Variante in eliminazione. Disponibile fino ad esaurimento scorte, entro Dicembre 2022.
Discontinued color variants. Available only until stocks are exhausted, by December 2022.

→ **Mirage 01 Beige/Bianco**



Caratteristiche Tecniche / Technical features:

Categoria Category	Special Special
Altezza Height	cm 140 inch 55,1181
Peso gr/mtl Weight gr/mtl	550 g/mt2 550 g/mt2
Composizione Composition	72% cotone, 28% lino 72% cotton, 28% linen
Martindale Martindale	20.000 20.000
Resistenza alla luce Light resistance	4/5 4/5
Simboli di lavaggio Wash Care Symbols	

→ **Altri tessuti Mirage - Other Mirage fabrics**



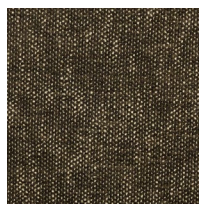
Mirage 02
Bianco/Beige



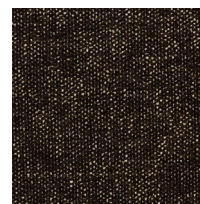
Mirage 03
Moka*



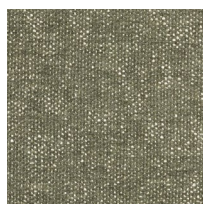
Mirage 10
Beige/ Grigio



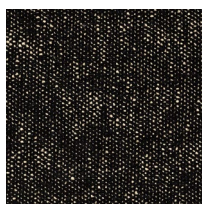
Mirage 04
Beige/Verde



Mirage 05
Beige/Marrone



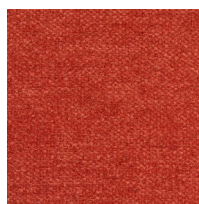
Mirage 08
Beige/Salvia



Mirage 07
Pesca/Nero



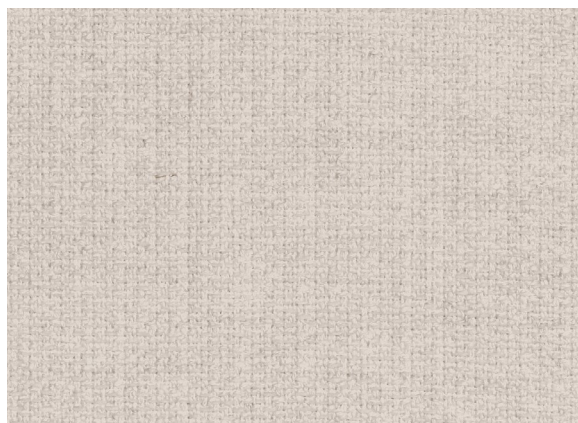
Mirage 06
Nero*




Mirage
Mattone*

* Variante in eliminazione. Disponibile fino ad esaurimento scorte, entro Dicembre 2022.
Discontinued color variants. Available only until stocks are exhausted, by December 2022.

→ **Morris 10 Avorio**



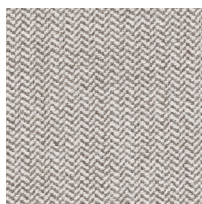
Caratteristiche Tecniche / Technical features:

Categoria Category	Media / Extra Media / Extra
Altezza Height	cm 140 inch 55,1181
Peso gr/mtl Weight gr/mtl	635 g/mt2 635 g/mt2
Composizione Composition	62% acrilico, 13% lino, 13% viscosa, 12% poliestere 62% acrylic, 13% linen, 13% viscose, 12% polyester
Martindale	40.000 40.000
Resistenza alla luce Light resistance	4/5 4/5
Simboli di lavaggio Wash Care Symbols	

→ **Altri tessuti Morris - Other Morris fabrics**



Morris 12
Corda



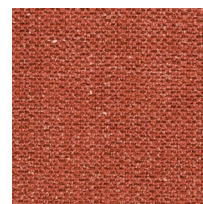
Morris 107



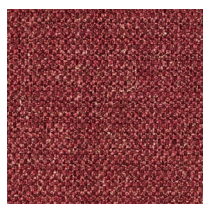
Morris 18
Tortora



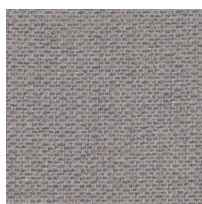
Morris 11
Ocra*



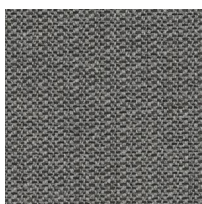
Morris 22
Rosso*



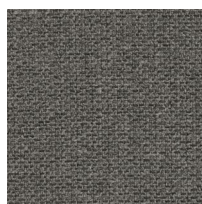
Morris 20
Lampono*



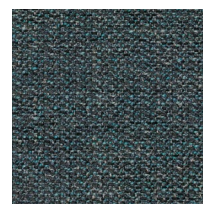
Morris 7
Ghiaccio



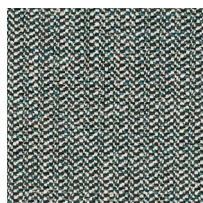
Morris 111*



Morris 4
Grigio



Morris 14
Ottanio



Morris 105*



Morris 6
Verde Acido*

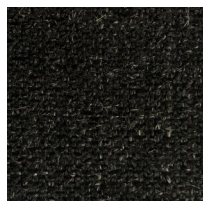


Morris 104*

* Variante in eliminazione. Disponibile fino ad esaurimento scorte, entro Dicembre 2022.
Discontinued color variants. Available only until stocks are exhausted, by December 2022.

→ **Nuove varianti colore aggiunte - New added color variants**

Disponibili a partire da Gennaio 2023 - Available from January 2023



Morris 13



Morris 24

→ **Panama 60**



Caratteristiche Tecniche / Technical features:

Categoria Category	Top Top
Altezza Height	cm 140 inch 55,1181
Peso gr/mtl Weight gr/mtl	785 g/mt2 785 g/mt2
Composizione Composition	93% lino, 7% nylon 93% linen, 7% nylon
Martindale Martindale	18.000 18.000
Resistenza alla luce Light resistance	4/5 4/5
Simboli di lavaggio Wash Care Symbols	

→ **Altri tessuti Panama - Other Panama fabrics**



Panama 17



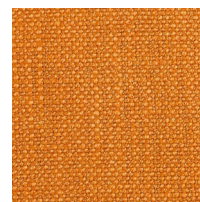
Panama 80



Panama 72



Panama 64*



Panama 67*



Panama 31



Panama 68



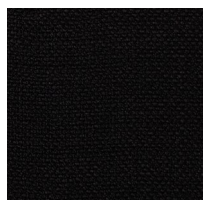
Panama 90



Panama 35



Panama 6



Panama 121

* Variante in eliminazione. Disponibile fino ad esaurimento scorte, entro Dicembre 2022.
Discontinued color variants. Available only until stocks are exhausted, by December 2022.

→ **Nuove varianti colore aggiunte - New added color variants**

Disponibili a partire da Gennaio 2023 - Available from January 2023



Panama 122

→ **River 15**



Caratteristiche Tecniche / Technical features:

Categoria Category	Media / Extra Media / Extra
Altezza Height	cm 140 inch 55,1181
Peso gr/mtl Weight gr/mtl	580 g/mt2 580 g/mt2
Composizione Composition	51% acrilico, 11% lino, 11% poliestere, 11% viscosa, 16% cotone 51% acrylic, 11% linen, 11% polyester, 11% viscose, 16% cotton
Martindale	25.000 25.000
Resistenza alla luce Light resistance	4/5 4/5
Simboli di lavaggio Wash Care Symbols	

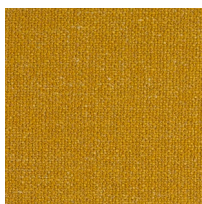
→ **Altri tessuti River - Other River fabrics**



River 2*



River 37



River 36*



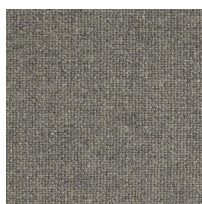
River 24*



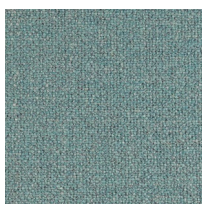
River 21*



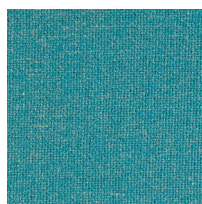
River 25



River 3*



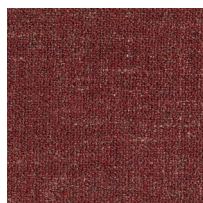
River 22*



River 38*



River 23*



River 31*

* Variante in eliminazione. Disponibile fino ad esaurimento scorte, entro Dicembre 2022.
Discontinued color variants. Available only until stocks are exhausted, by December 2022.

→ **Nuove varianti colore aggiunte - New added color variants**

Disponibili a partire da Gennaio 2023 - Available from January 2023



River 137



River 17



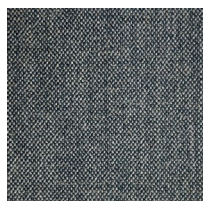
River 92



River 98



River 76



River 93

→ Stone 2



Caratteristiche Tecniche / Technical features:

Categoria Category	Special Special
Altezza Height	cm 140 inch 55,1181
Peso gr/mtl Weight gr/mtl	800 g/mt2 800 g/mt2
Composizione Composition	16% cotone, 47% lino, 11% nylon, 21% viscosa, 5% acrilico 16% cotton, 47% linen, 11% nylon, 21% viscose, 5% acrylic
Martindale Martindale	20.000 20.000
Resistenza alla luce Light resistance	4/5 4/5
Simboli di lavaggio Wash Care Symbols	

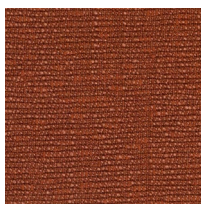
→ Altri tessuti Stone - Other Stone fabrics



Stone 3



Stone 1



Stone 9



Stone 4



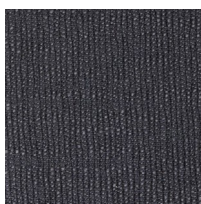
Stone 6



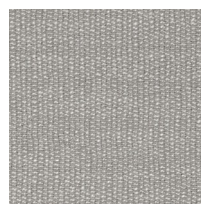
Stone 7



Stone 10*



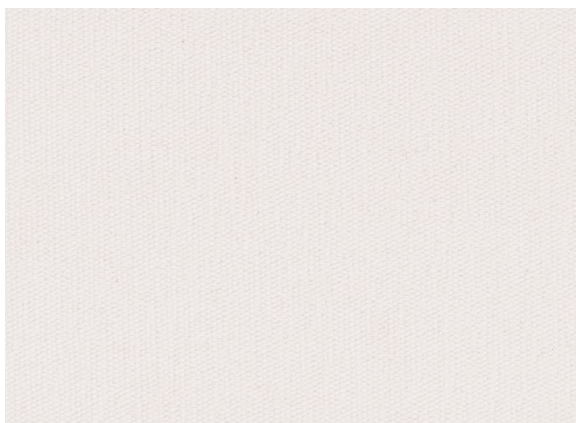
Stone 8



Stone 5

* Variante in eliminazione. Disponibile fino ad esaurimento scorte, entro Dicembre 2022.
Discontinued color variants. Available only until stocks are exhausted, by December 2022.

→ Tindari 1



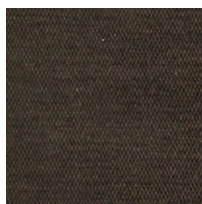
Caratteristiche Tecniche / Technical features:

Categoria Category	Basic Basic
Altezza Height	cm 140 inch 55,1181
Peso gr/mtl Weight gr/mtl	860 g/mt2 860 g/mt2
Composizione Composition	52% cotone, 47% acrilico, 1% poliestere 52% cotton, 47% acrylic, 1% polyester
Martindale	40.000 40.000
Resistenza alla luce Light resistance	4/5 4/5
Simboli di lavaggio Wash Care Symbols	

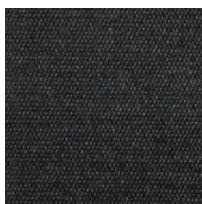
→ Altri tessuti Tindari - Other Tindari fabrics



Tindari 14



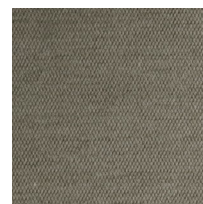
Tindari 21



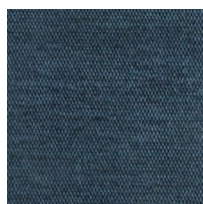
Tindari 27



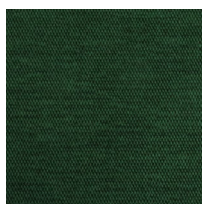
Tindari 29



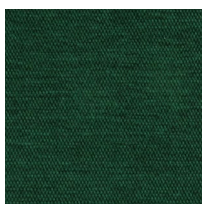
Tindari 32



Tindari 50*



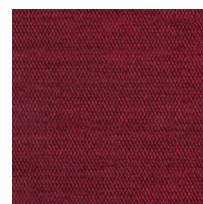
Tindari 61*



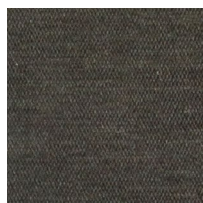
Tindari 62



Tindari 64*



Tindari 65*



Tindari 67*



Tindari 68



Tindari 69

* Variante in eliminazione. Disponibile fino ad esaurimento scorte, entro Dicembre 2022.
Discontinued color variants. Available only until stocks are exhausted, by December 2022.

→ **Nuove varianti colore aggiunte - New added color variants**

Disponibili a partire da Gennaio 2023 - Available from January 2023



Tindari 73

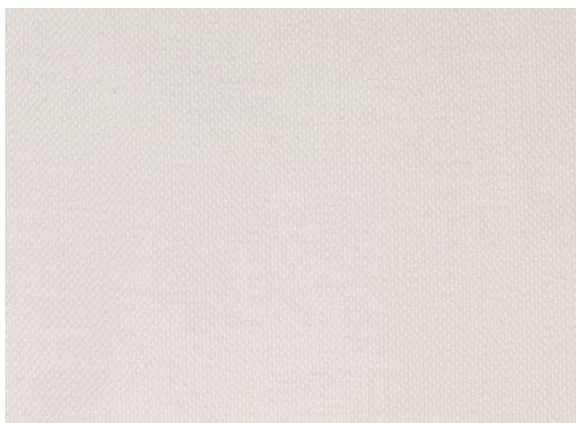


Tindari 34



Tindari 70

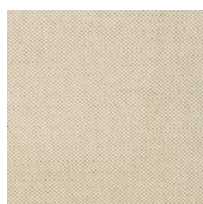
→ **Tosca 01 Bianco**



Caratteristiche Tecniche / Technical features:

Categoria Category	Media / Extra Media / Extra
Altezza Height	cm 140 inch 55,1181
Peso gr/mtl Weight gr/mtl	380 g/mt2 380 g/mt2
Composizione Composition	63% cotone, 37% lino 63% cotton, 37% linen
Martindale Martindale	32.500 32.500
Resistenza alla luce Light resistance	4/5 4/5
Simboli di lavaggio Wash Care Symbols	

→ **Altri tessuti Tosca - Other Tosca fabrics**



Tosca 10
Ecrù



Tosca 22
Ghiaccio



Tosca 53
Ottanio



Tosca 05
Blu Nero



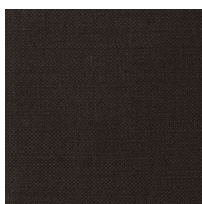
Tosca 48
Verde Oliva



Tosca 04
Grigio



Tosca 45
Verde Acido



Tosca 19
Moro*



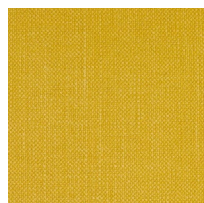
Tosca 15
Caffelatte*



Tosca 36
Ruggine



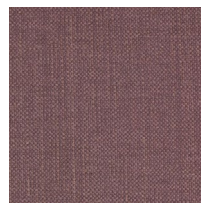
Tosca 35
Rosso*



Tosca 44
Giallo*



Tosca 20
Malva



Tosca 25
Uva*



Tosca 28
Viola*

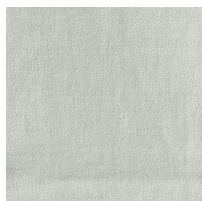
* Variante in eliminazione. Disponibile fino ad esaurimento scorte, entro Dicembre 2022.
Discontinued color variants. Available only until stocks are exhausted, by December 2022.

→ **Nuove varianti colore aggiunte - New added color variants**

Disponibili a partire da Gennaio 2023 - Available from January 2023



Tosca 61

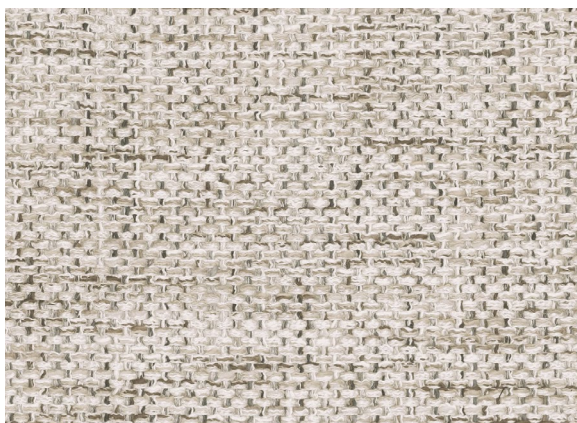


Tosca 59



Tosca 54

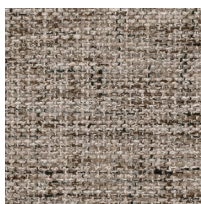
→ **Trimix 214 Naturale**



Caratteristiche Tecniche / Technical features:

Categoria Category	Top Top
Altezza Height	cm 140 inch 55,1181
Peso gr/mtl Weight gr/mtl	875 g/mt2 875 g/mt2
Composizione Composition	56% cotone, 15% poliestere, 18% acrilico, 11% lino 56% cotton, 15% polyester, 18% acrylic, 11% linen
Martindale	30.000 30.000
Resistenza alla luce Light resistance	4/5 4/5
Simboli di lavaggio Wash Care Symbols	

→ **Altri tessuti Trimix - Other Trimix fabrics**



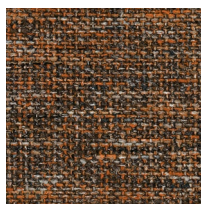
Trimix 215
Sabbia



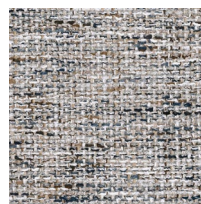
Trimix 209
Arancio



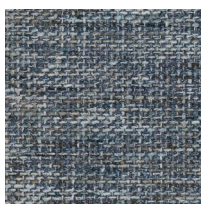
Trimix 206
Bruciato*



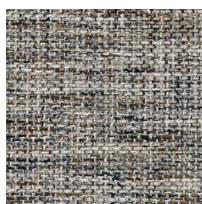
Trimix 210
Marrone*



Trimix 213
Grigio



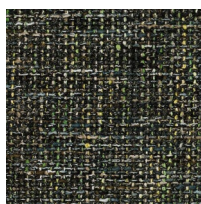
Trimix 202
Azzurro



Trimix 204
Perla



Trimix 205
Antracite

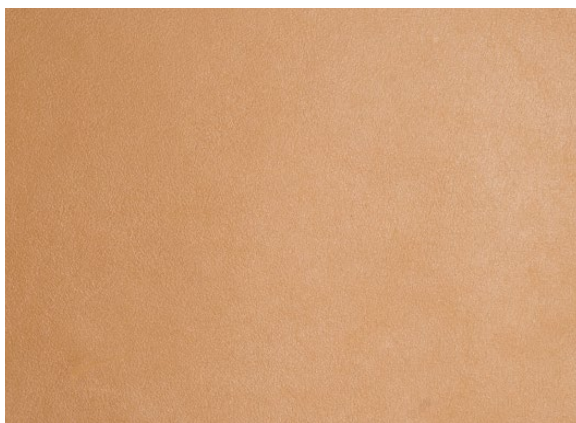


Trimix 207
Verde/Nero



Trimix 208
Ottanio*

* Variante in eliminazione. Disponibile fino ad esaurimento scorte, entro Dicembre 2022.
Discontinued color variants. Available only until stocks are exhausted, by December 2022.

→ **Caresse 802**

Caratteristiche Tecniche / Technical features:

Spessore Thickness	1,0/1,2 mm 1,0/1,2 mm
Tipologia Leather type	Pieno Fiore Full Grain
Origine e provenienza Raw Material	Pelli Bovine Europee European Raw Hides
Concia Tannage	Sali di Cromo Chromium Salt
Tintura Dyeing	Anilina Passante in Botte Through-Dyeing Aniline
Rifinitura Finishing	Anilina Aniline
Categoria Category	C C

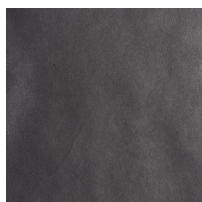
Pulizia e Manutenzione / Cleaning and Maintenance:

Evitare la luce diretta del sole e l'esposizione a fonti di calore. Spolverare regolarmente la pelle con un panno morbido e asciutto.

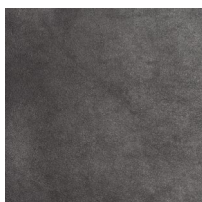
Avoid placing leather near direct sun and keep the leather away from heat sources. Dust regularly with a soft and dry cloth.

→ **Altre pelli Caresse - Other Caresse leathers**

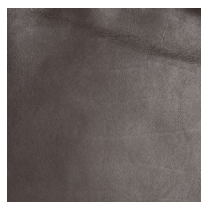
Caresse 800



Caresse 806



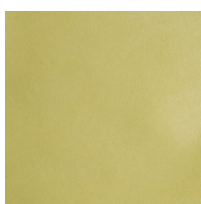
Caresse 807



Caresse 808



Caresse 801



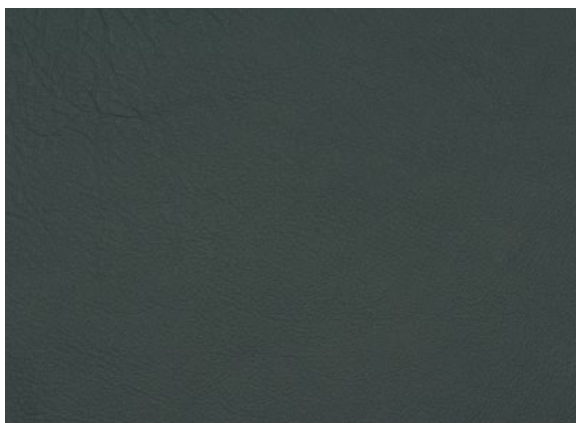
Caresse 804*



Caresse 805*

* Variante in eliminazione. Disponibile fino ad esaurimento scorte, entro Dicembre 2022.
Discontinued color variants. Available only until stocks are exhausted, by December 2022.

→ **Florence 71/1**



Caratteristiche Tecniche / Technical features:

Spessore Thickness	1,1/1,3 mm 1,1/1,3 mm
Tipologia Leather type	Grana Corretta, Pelle Liscia Corrected Grain, Smooth Leather
Origine e provenienza Raw Material	Tori Europei European Bulls
Concia Tannage	Sali di Cromo Chromium Salt
Tintura Dyeing	Anilina Passante in Botte Through-Dyeing Aniline
Rifinitura Finishing	Poliuretano con Pigmenti, Tatto Cerato Pigmented Polyurethane Finishing, Waxy Touch
Categoria Category	A A

* Variante in eliminazione.
Disponibile fino ad esaurimento scorte, entro Dicembre 2022.
Discontinued color variants.
Available only until stocks are exhausted, by December 2022.

Pulizia e Manutenzione / Cleaning and Maintenance:

Evitare la luce diretta del sole e l'esposizione a fonti di calore. Spolverare regolarmente la pelle con un panno morbido e asciutto.
Avoid placing leather near direct sun and keep the leather away from heat sources. Dust regularly with a soft and dry cloth.

→ **Altre pelli Florence - Other Florence leathers**



Florence 61/6



Florence 22*



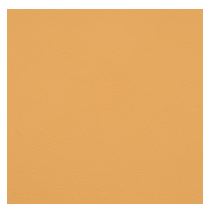
Florence 60/2*



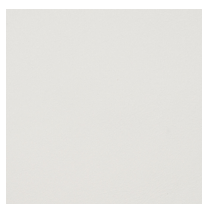
Florence 70



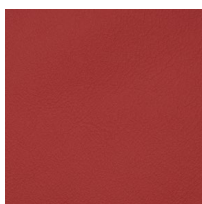
Florence 60



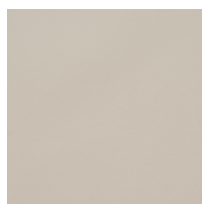
Florence 50/1*



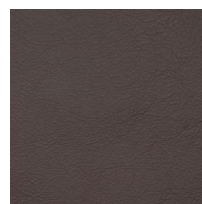
Florence 00



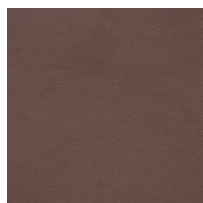
Florence 21/3*



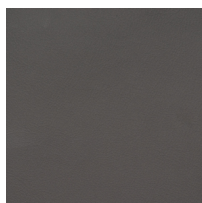
Florence 00/8



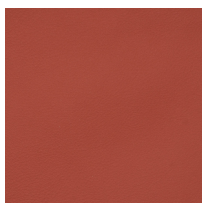
Florence 90



Florence 90/7



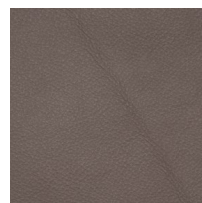
Florence 61/4



Florence 21



Florence 00/1



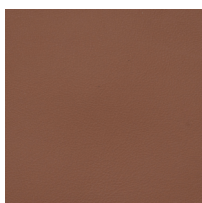
Florence 60/5



Florence 10/6



Florence 80

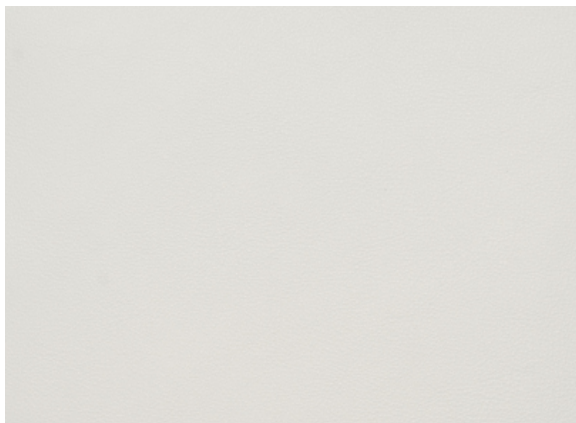


Florence 90/6*



Florence 62*

→ **New Scotland 300**



Caratteristiche Tecniche / Technical features:

Spessore Thickness	1,2/1,4 mm 1,2/1,4 mm
Tipologia Leather type	Mano Morbida, Pelle Liscia Soft Touch, Smooth Leather
Origine e provenienza Raw Material	Tori Europei European Bulls
Concia Tannage	Sali di Cromo Chromium Salt
Tintura Dyeing	Anilina Passante in Botte Through-Dyeing Aniline
Rifinitura Finishing	Pigmenti Dispersi Fini, Tatto Cerato Pigmented, Waxy Touch
Categoria Category	B B

Pulizia e Manutenzione / Cleaning and Maintenance:

Evitare la luce diretta del sole e l'esposizione a fonti di calore. Spolverare regolarmente la pelle con un panno morbido e asciutto.

Avoid placing leather near direct sun and keep the leather away from heat sources. Dust regularly with a soft and dry cloth.

→ **Altre pelli New Scotland - Other New Scotland leathers**



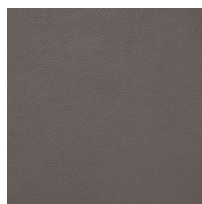
New Scotland 320*



New Scotland 301



New Scotland 302



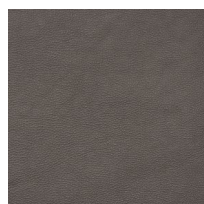
New Scotland 305



New Scotland 304



New Scotland 303



New Scotland 361



New Scotland 380



New Scotland 321*



New Scotland 390

* Variante in eliminazione. Disponibile fino ad esaurimento scorte, entro Dicembre 2022.
Discontinued color variants. Available only until stocks are exhausted, by December 2022.