

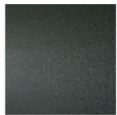
ROD SYSTEM

design Piero Lissoni

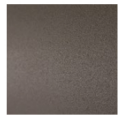
Supporting structure in lacquered drawn tubular steel, seat sprung with coated rubber elastic straps and padding in polyurethane foam. Backrest and armrest structure in layered HPL panel. Covering in 100% polyether, thermally bonded onto a polyamide velveteen backing. Backrest and seat cushions, joined together by zipper, in prewashed and sterilized goose down stitched into separate compartments, with differentiated density polyurethane foam insert. The seat cushions are quilted with buttons at sight. On request, seat cushions available quilted without buttons. Armrest cushions in polyurethane foam covered with prewashed

and sterilized goose down stitched into separate compartments, with a poplar plywood supporting panel, fixed to the frame by plug-in hinges. Stainless Steel feet, polished or matt satin-finish or lacquered with epoxy powder coating burnished colour or gunmetal grey colour, screwed to the base with a bushing and with adjustable black PVC tips. Fabric or leather upholstery, both fully removable by zippers and Velcro fastenings. Seat depth: 60cm. Table to be used in composition with MDF structure, veneered with Stone Oak® plates, with acrylic paint finish.

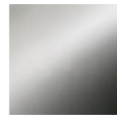
Feet



Steel with
Gunmetal Grey
Coating



Burnished
Painted Steel



Stainless Steel
with Polished
Finish



Stainless Steel
with Matt
Satin Finish

Table Top

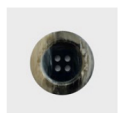


Stone Oak®

Buttons



col. Light



col. Dark