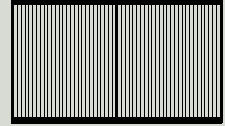


Instructions

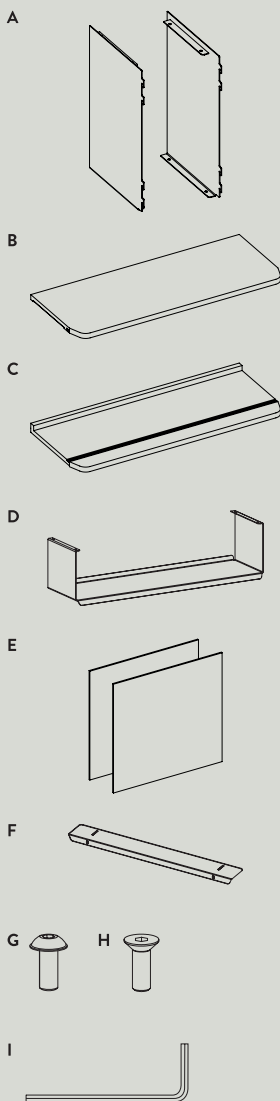
Rombe Cabinet Industrial Facility 2025



Please read these instructions carefully and retain them for future reference to ensure the product is used correctly. For your own safety, please study each step of this instruction manual first. &Tradition is not responsible for any faults or damage caused by not following these instructions correctly. Do not modify this product in any way. If you have any questions or comments, please do not hesitate to contact us by mail on: info@andtradition.com

&Tradition®

Rombe Cabinet Industrial Facility 2025



Safety precautions

- Please refer to the primary Rombe instruction manual for additional guidance.
- Keep the packaging out of reach of children.
- **WARNING!** Furniture tipping over can lead to serious or fatal crushing injuries. The product must be mounted to the wall using the mounts provided.
- Screws and plugs are not included to attach the wall mounts to the wall. Use suitable screws and plugs for your walls. Consult professional advice if in doubt.
- Ensure all components are securely attached.
- This product is intended for indoor use only.
- Do not put a TV on this product.
- Maximum weight capacity is 15kg / 33lbs for the cabinet top and cabinet shelf, and 10kg / 22lbs for the cabinet bottom.
- Handle with care as damaged edges or scratches can cause glass shelves to crack or break.

Contents

- A Side panels
- B Cabinet top
- C Cabinet bottom
- D Cabinet shelf*
- E Glass doors
- F Wall bracket
- G Pan head screw (M5 x 12mm)
- H Countersunk head screw* (M5 x 14mm)
- I Allen key (3.0mm)

***Delivered content depends on chosen configuration.**

Tools needed

- Screwdriver
- Cordless drill
- Spirit level
- Drill bits**
- Wall plugs**
- Wall screws**

****Select appropriate fixings for your wall type i.e. plaster, concrete, brick, or wood.**

Cleaning instructions

Lacquered wood

For daily care, it is recommended to dust the surface with a soft, dry cloth. Regular cleaning can be done using a soft cloth wrung in lukewarm water. Dry immediately afterwards with a soft, dry cloth following the wood grain. For more severe cleaning, use a soap specifically developed for lacquered wood.

Avoid abrasive cleaning detergents and aggressive cleaning agents as they may damage the surface of the wood. To prolong the look and lifespan of lacquered wood, avoid placing in direct sunlight, excessive heat or humidity.

Powder-coated aluminium and steel

For daily care, it is recommended to dust the surface with a soft, dry cloth. Powder-coated surfaces can also be cleaned with a soft cloth wrung in a mild solution of lukewarm water and a universal cleaning detergent. Avoid abrasive cleaning agents or aggressive cleaning detergents as this may permanently damage the surface. Always dry immediately afterwards with a clean, dry cloth.

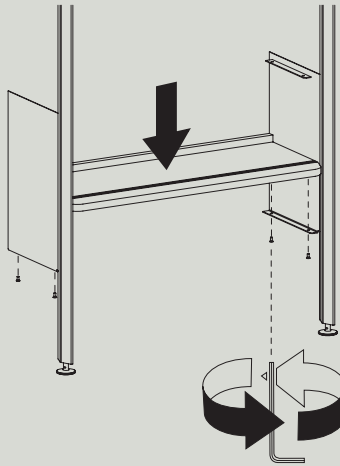
Glass

For daily care, it is recommended to dust the surface with a soft, dry cloth. Regular cleaning can be done using a soft cloth wrung in a mild solution of lukewarm water and a standard glass cleaning detergent. Dry immediately with a soft, dry lint-free cloth to avoid streaks or watermarks. Avoid abrasive cleaning agents as they can damage the surface of the glass.

Step 1 / 7

Hook the side panels (A) into holes 5 to 12 of the uprights. Then, place the cabinet bottom (C) carefully on top of the lids at the bottom of each side panel.

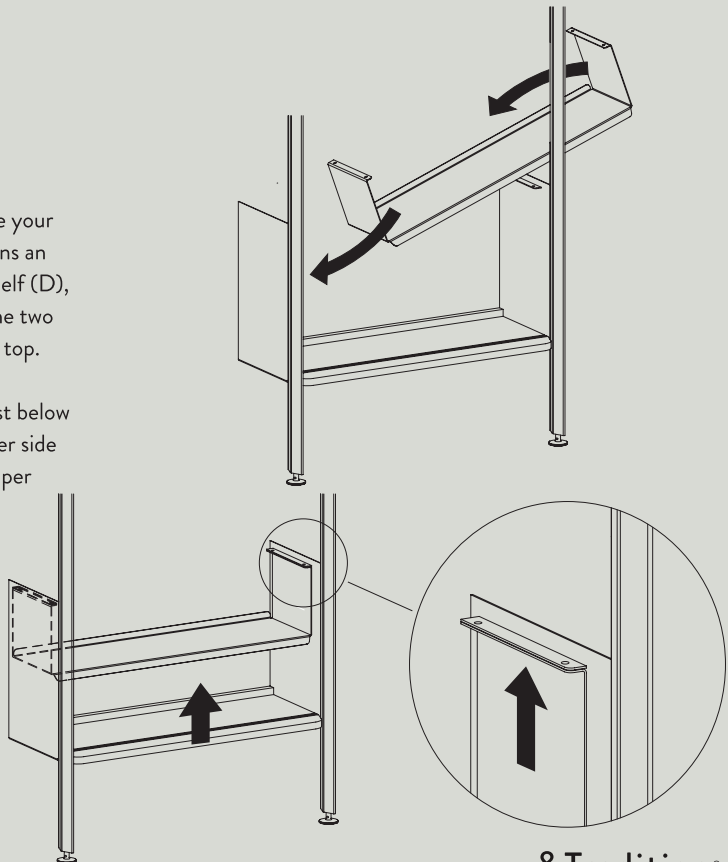
Secure into place with the countersunk head screws (H) provided from below as pictured.



Step 2 / 7

OPTIONAL: In case your configuration contains an additional cabinet shelf (D), slide it in between the two side panels from the top.

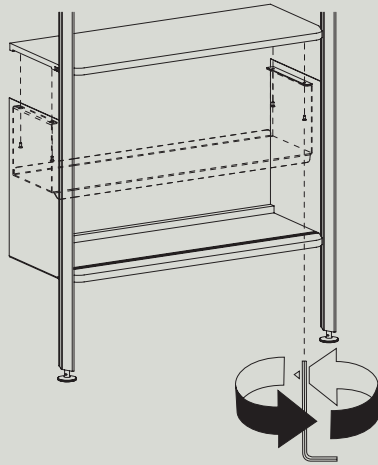
Position the shelf just below the brackets on either side of the side panels as per the illustration.



Step 3 / 7

Continue to attach the cabinet top (B) by resting it on top of the side panels (A).

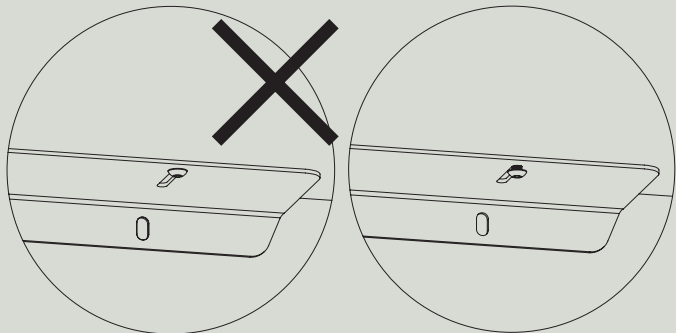
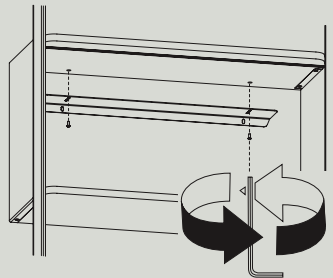
Secure in place with the countersunk head screws (H) from below as pictured to secure both the cabinet shelf and cabinet top in place.



Step 4 / 7

To add the wall bracket (F), use the attachment point underneath the cabinet top using the pan head screws (G).

Do not fully tighten the screws just yet.

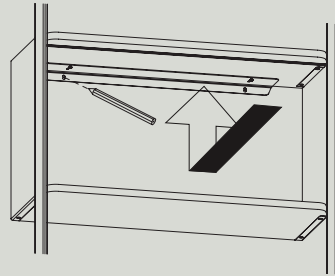


Step 5 / 7

Push the wall bracket all the way back to meet the wall behind the unit and up against the underside of the cabinet top.

Mark the position of the additional wall fixtures.

Remove the bracket and, if necessary, the cabinet top to create enough space to install the wall attachments.

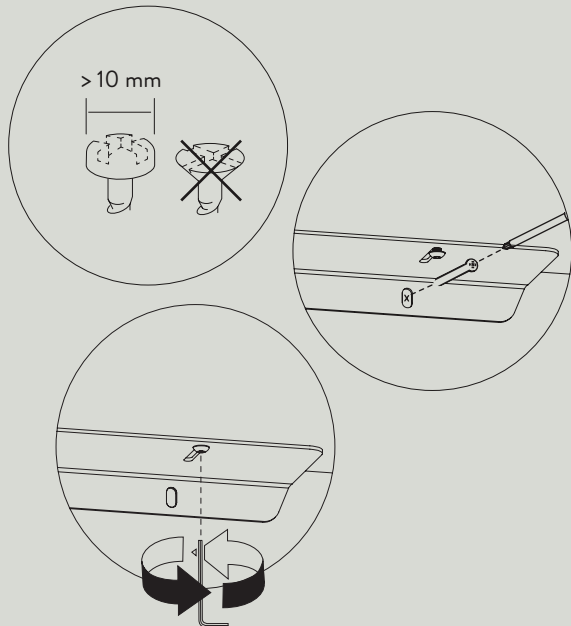


Step 6 / 7

Finally, fasten the connection between the cabinet and the wall.

For the wall connection, use a pan head screw with a diameter of at least 10mm for the attachment.

IMPORTANT: Make sure that you use plugs suitable for your wall type. If in doubt, consult a professional to ensure the shelving system is securely attached to the wall.



Step 7 / 7

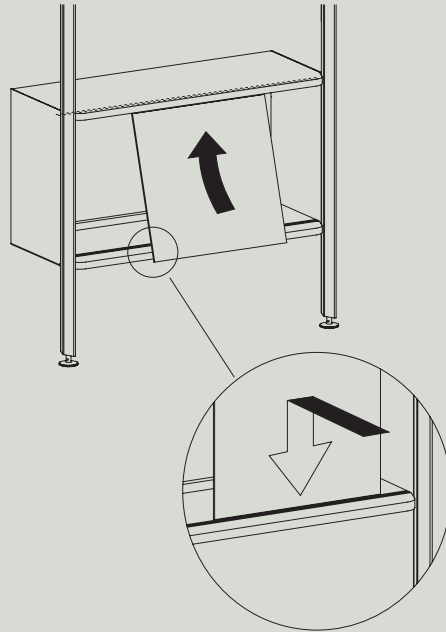
Finally, add the glass doors (E) to the cabinet.

Start by inserting the first glass door into the top rail and gently push it all the way up. Then, place the bottom edge above the bottom rail and carefully lower the glass door into place.

Repeat this step for the second door using the other rail.

IMPORTANT: Handle with care as damaged edges or scratches can cause glass shelves to crack or break.

IMPORTANT: Make sure all screws of the cabinet are tightened firmly.





Instructions

Rombe Cabinet Shelf Industrial Facility 2025



Please read these instructions carefully and retain them for future reference to ensure the product is used correctly. For your own safety, please study each step of this instruction manual first. &Tradition is not responsible for any faults or damage caused by not following these instructions correctly. Do not modify this product in any way. If you have any questions or comments, please do not hesitate to contact us by mail on: info@andtradition.com

&Tradition®

Rombe Cabinet Shelf Industrial Facility 2025

A



Safety precautions

- Please refer to the primary Rombe instruction manual for additional guidance.
- Keep the packaging out of reach of children.
- Ensure all components are securely attached.
- This product is intended for indoor use only.
- Do not put a TV on this product.
- Place heavier items on the lowest shelves.
- Maximum weight capacity is 15kg / 33lbs
- Handle with care as damaged edges or scratches can cause glass shelves to crack or break.

Contents

A Cabinet Shelf

Tools needed

- Allen Key (3.0mm)

Cleaning instructions

Powder-coated aluminium and steel

For daily care, it is recommended to dust the surface with a soft, dry cloth. Powder-coated surfaces can also be cleaned with a soft cloth wrung in a mild solution of lukewarm water and a universal cleaning detergent. Avoid abrasive cleaning agents or aggressive cleaning detergents as this may permanently damage the surface. Always dry immediately afterwards with a clean, dry cloth.

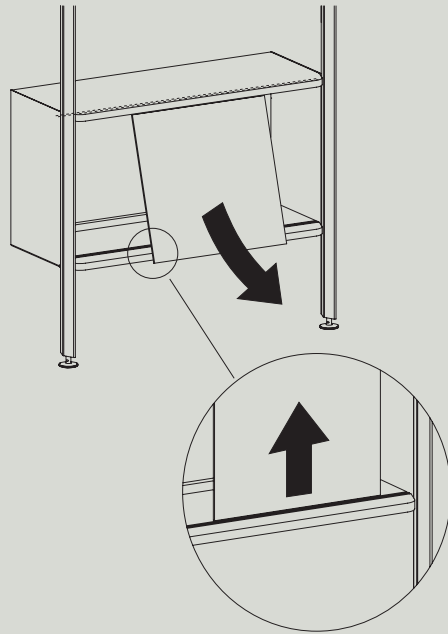
Step 1 / 5

To install the cabinet shelf, first remove the glass doors from the cabinet carefully.

Start by lifting the glass up from the lower rail. Rotate it slightly and remove it from the cabinet. Place it on a soft, flat surface.

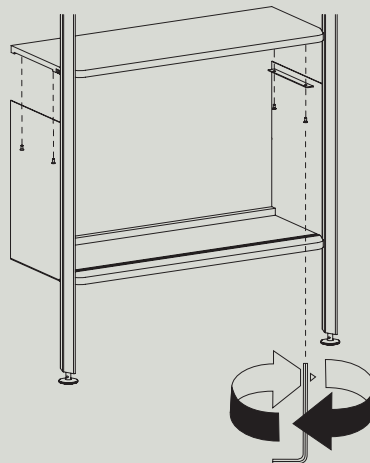
Repeat this step for the second door.

IMPORTANT: Handle with care as damaged edges or scratches can cause glass shelves to crack or break.



Step 2 / 5

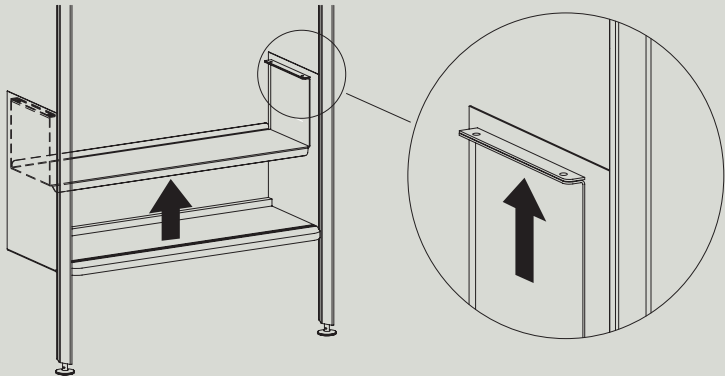
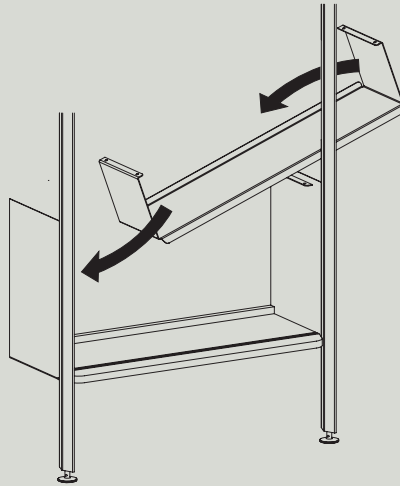
Next, remove the cabinet top by unscrewing the countersunk head screws from underneath, turning them counterclockwise.



Step 3 / 5

Slide in the cabinet shelf (A) in between the two side panels from the top.

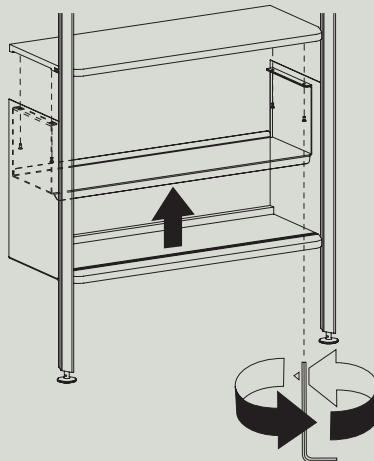
Position the shelf just below the brackets on either side of the side panels as per the illustration.



Step 4 / 5

Attach the cabinet top by resting it on top of the side panels again.

Secure in place with short flat head screws from below as pictured to secure both the cabinet shelf and cabinet top in place.



&Tradition®

Step 5 / 5

Finally, add the glass doors to the cabinet.

Start by inserting the first glass door into the top rail and gently push it all the way up. Then, place the bottom edge above the bottom rail and carefully lower the glass panel into place.

Repeat this step for the second door using the other rail.

IMPORTANT: Handle with care as damaged edges or scratches can cause glass shelves to crack or break.

IMPORTANT: Make sure all screws of the cabinet are tightened firmly.

